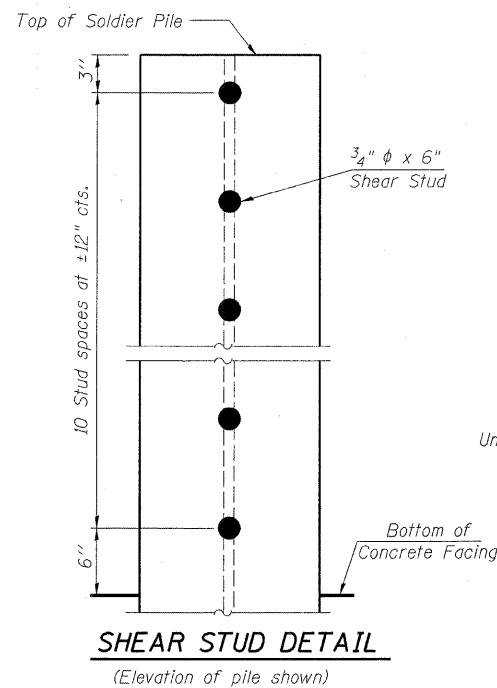
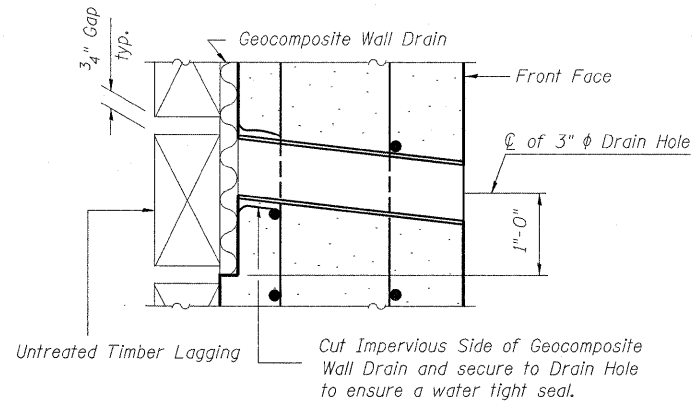


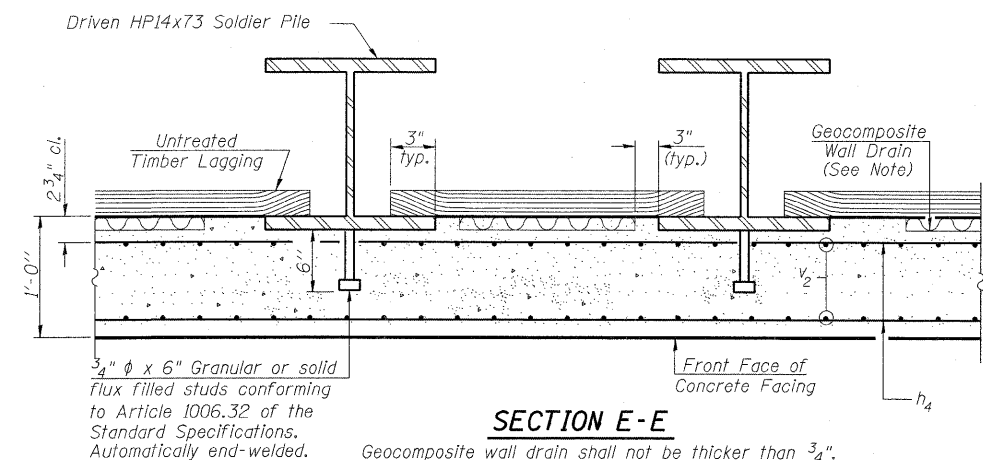
SECTION THRU WALL



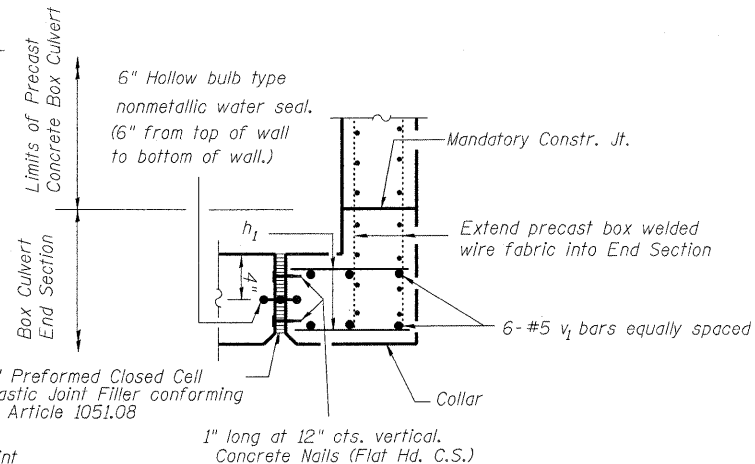
SHEAR STUD DETAIL
(Elevation of pile shown)



WINGWALL DRAIN HOLE DRAIN DETAIL

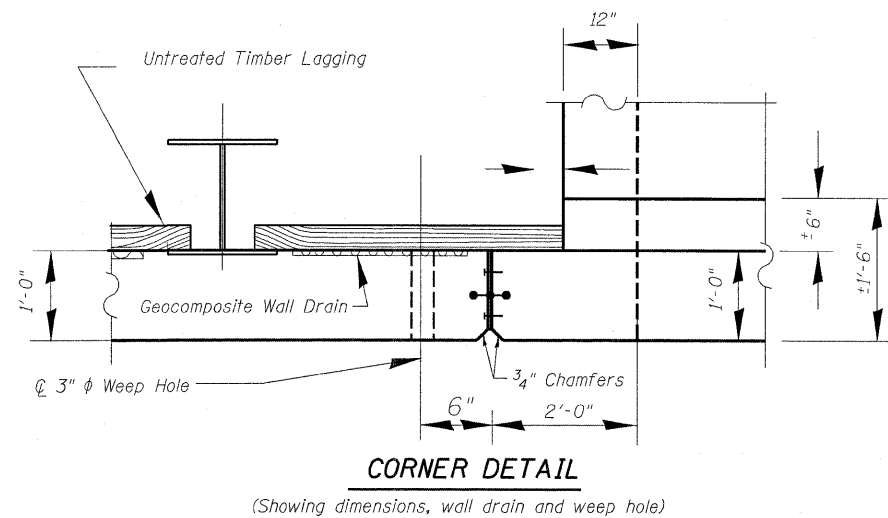


SECTION E-E
Geocomposite wall drain shall not be thicker than 3/4 inch.



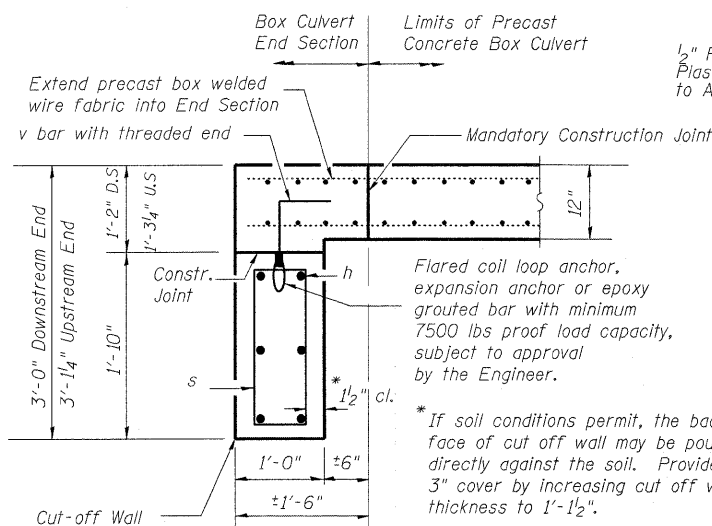
SECTION B-B

(Showing reinforcement and seal)



CORNER DETAIL

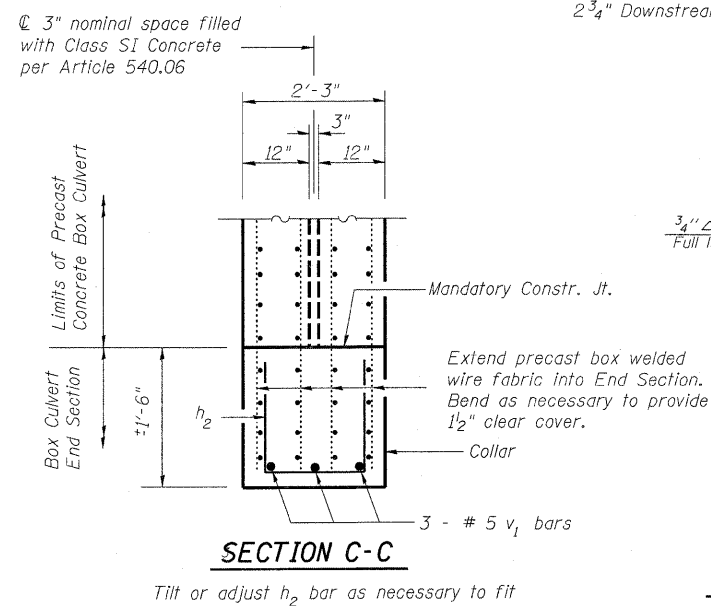
(Showing dimensions, wall drain and weep hole)



SECTION A-A

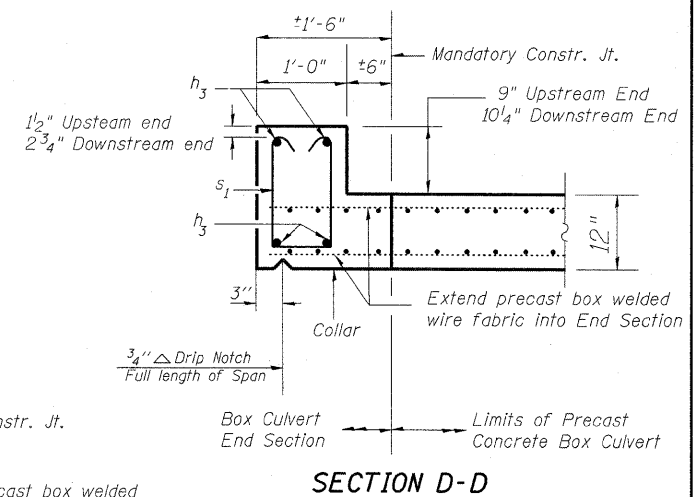
SEQUENCE OF WALL CONSTRUCTION

1. Build the cut-off wall
2. Place precast boxes
3. Drive soldier piles (may be driven prior to placing the boxes)
4. Build collar around the precast boxes
5. Install Untreated Timber Lagging
6. Place Geocomposite Wall Drain
7. Place and compact backfill behind wall
8. Install Stud Shear Connectors
9. Form concrete face and place rebar
10. Cast concrete face
11. Remove temporary soldier pile and associated timber lagging.
12. Place remainder of backfill to proposed finished ground surface in front and back of wall.



SECTION C-C

Tilt or adjust h₂ bar as necessary to fit



SECTION D-D

BOX CULVERT END SECTION DETAILS
STRUCTURE NO. 080-2005

FILE NAME =	USER NAME = teasleyck	DESIGNED - D. Greifzu	REVISED -	STATE OF ILLINOIS DEPARTMENT OF TRANSPORTATION	BOX CULVERT END SECTION DETAILS	F.A. RTE. 327	SECTION 5B-1	COUNTY RICHLAND	TOTAL SHEETS 14	SHEET NO. 12	
ca:\pw_work\pww\dots\teasleyck\dms60138\Richland 0802005 20090723 Final.dgn	DRAWN - D. Greifzu	REVISED -	SCALE:			SHEET NO. 4 OF 6 SHEETS	STA. TO STA.	FED. ROAD DIST. NO.	ILLINOIS FED. AID PROJECT	CONTRACT NO.	
PLOT SCALE = 1:8538 in / IN.	CHECKED - M. Christensen	REVISED -									
PLOT DATE = 1/13/2010	DATE - 07/08/09	REVISED -									