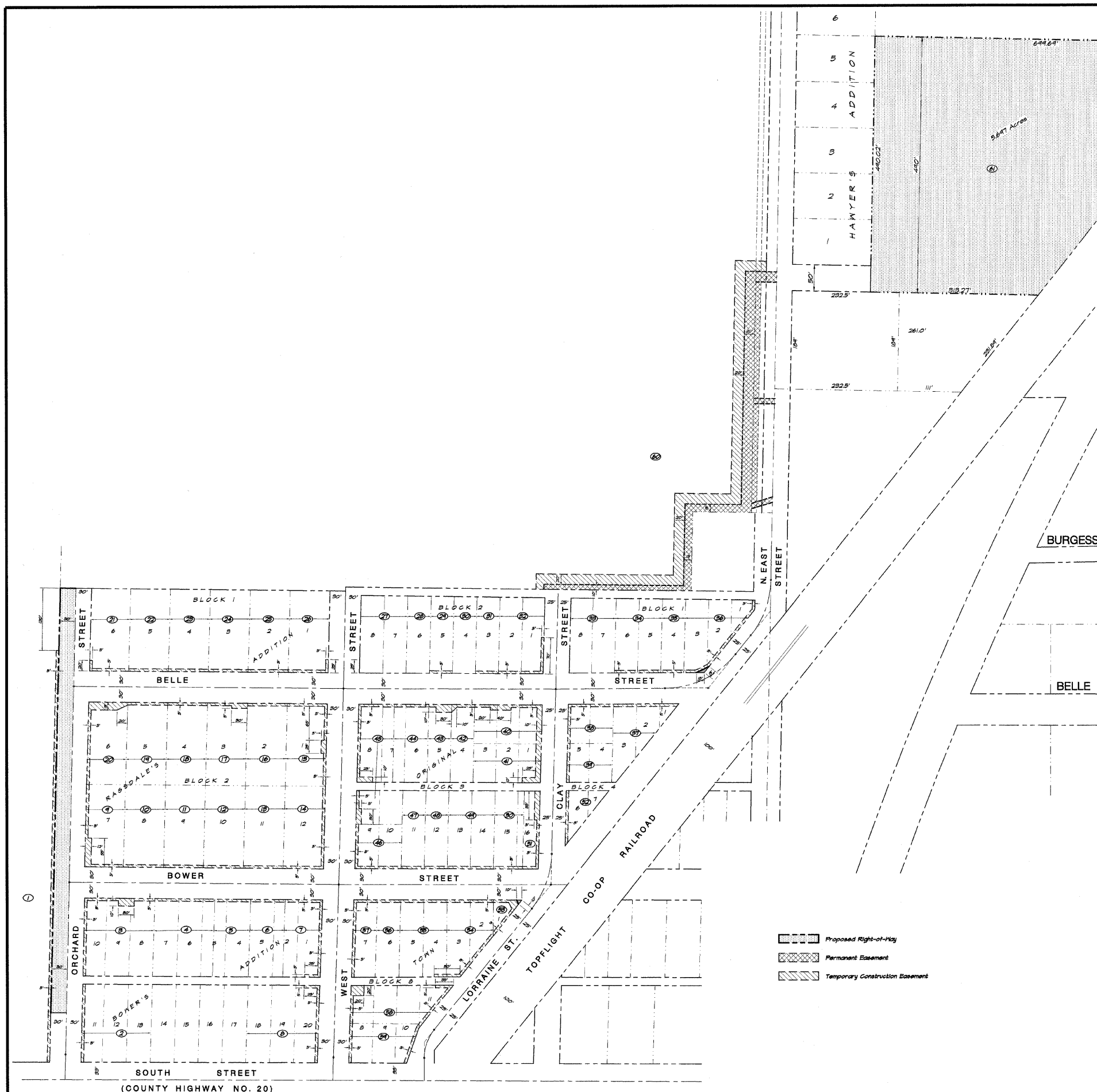
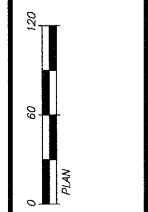


DESIGNED	SCALE	DATE	REVISIONS	
			NO.	DATE
MHP	1" = 100'	1/30/09	1	1/30/09
Les Jenkins		7/1/2006	2	7/1/2006
XXX		06-04-04	3	11-08-04

**PATNBRIDGE & ASSOCIATES, INC.**  
 Consulting Engineers  
 1670 SOUTH TAYLORVILLE ROAD  
 DECATUR ILLINOIS  
 Illinois License 184-001255

**VILLAGE OF OREANA, ILLINOIS**  
 SAFE TALK PROJECT  
**STRIP MAP**



Parcel No.	Owner	R.O.W. Taking	Permanent Easement	Temporary Easement
1	Jeffery R. Jackson	24550 s.f. = 0.563 ac		3468 s.f. = 0.079 ac
2	Misty Loope			150 s.f. = 0.011 ac
3	Helen E. Magins			1720 s.f. = 0.039 ac
4	Caroline A. O'Brien & Bob Burtachi			115 s.f. = 0.003 ac
5	James R. Fear			345 s.f. = 0.008 ac
6	Harold L. Ballard			350 s.f. = 0.008 ac
7	Martha Dalton			1210 s.f. = 0.028 ac
8	Eric Edgescombe			875 s.f. = 0.020 ac
9	Robert E. & Edna Ryan			651 s.f. = 0.015 ac
10	Michael F. Sleeth			301 s.f. = 0.007 ac
11	Eileen Francis Sleeth			301 s.f. = 0.007 ac
12	Lori Glade			353 s.f. = 0.009 ac
13	Barry Karakachos c/o Kathy Charron			353 s.f. = 0.009 ac
14	Walter O. Connou			1148 s.f. = 0.026 ac
15	Mark A. Daley			1275 s.f. = 0.029 ac
16	Martha Ellen Dalton			353 s.f. = 0.009 ac
17	Cheryl Lavim Karner			533 s.f. = 0.012 ac
18	Harold L. Fairweather			353 s.f. = 0.009 ac
19	Trent Oras			353 s.f. = 0.009 ac
20	James A. & Dorothy L. Trypan			1740 s.f. = 0.040 ac
21	Jim Jones & Louise Parsons			450 s.f. = 0.010 ac
22	Louise L. Parsons			353 s.f. = 0.009 ac
23	F. Charles & Rosemary Kolesar			353 s.f. = 0.009 ac
24	Fred D. & Virginia L. Shaffer			353 s.f. = 0.009 ac
25	James S. Clark			353 s.f. = 0.009 ac
26	Michael D. & Crystal Sunderland			453 s.f. = 0.011 ac
27	Marsha Park			
28	Robert A. & Audrey Williams			
29	Rickey L. Honell			200 s.f. = 0.005 ac
30	Catherine Keller			
31	Ronald D. & June A. Ferguson			220 s.f. = 0.005 ac
32	Wayne M. & Kathy Charron			325 s.f. = 0.007 ac
33	Jackie L. Fair			
34	David Jacobson			440 s.f. = 0.010 ac
35	Paul A. Parenti			301 s.f. = 0.007 ac
36	Maurice E. & Doris L. Kopper	875 s.f. = 0.020 ac		1064 s.f. = 0.024 ac
37	Joe Greener			612 s.f. = 0.014 ac
38	James E. Casey			740 s.f. = 0.017 ac
39	Ward & Hazel Before			975 s.f. = 0.022 ac
40	Jackie A. & Alice L. Woodruff			1550 s.f. = 0.035 ac
41	Rachael Almond			1000 s.f. = 0.023 ac
42	David L. Ward			270 s.f. = 0.006 ac
43	Herbert D. Porter, Sr.			520 s.f. = 0.012 ac
44	Terry & Jerry Collins			350 s.f. = 0.008 ac
45	Dorinda A. & Tracy Subletfield			1780 s.f. = 0.041 ac
46	William O. & IlaDean Ratliff			840 s.f. = 0.019 ac
47	Dick & Debra Morebatter			220 s.f. = 0.005 ac
48	Chester A. Crane			220 s.f. = 0.005 ac
49	Wayne M. & Kathy Charron			440 s.f. = 0.010 ac
50	Town of Whitmore			280 s.f. = 0.006 ac
51	Logan Properties, LLC			1150 s.f. = 0.026 ac
52	Carol Klepszig			519 s.f. = 0.012 ac
53	Village of Oreana	392 s.f. = 0.009 ac		644 s.f. = 0.015 ac
54	Douglas & Valentina Logan			1084 s.f. = 0.025 ac
55	Jeff Tussing			440 s.f. = 0.010 ac
56	Mindy Griffith			220 s.f. = 0.005 ac
57	Tammy L. Stephens			445 s.f. = 0.010 ac
58	Aryn Kestley			1416 s.f. = 0.032 ac
59	John M. & Hedwina Fornear		17244 s.f. = 0.397 ac	154 s.f. = 0.004 ac
60	John M. & Paula S. Hill			28141 s.f. = 0.647 ac
61	Jane H. McEvoy	248175 s.f. = 5.691 ac		
TOTAL		272251 s.f. = 6.263 ac	17244 s.f. = 0.397 ac	67044 s.f. = 1.539 ac

\* Fee Simple Taking