

CONSTRUCTION PLANS FOR JACKSONVILLE MUNICIPAL AIRPORT

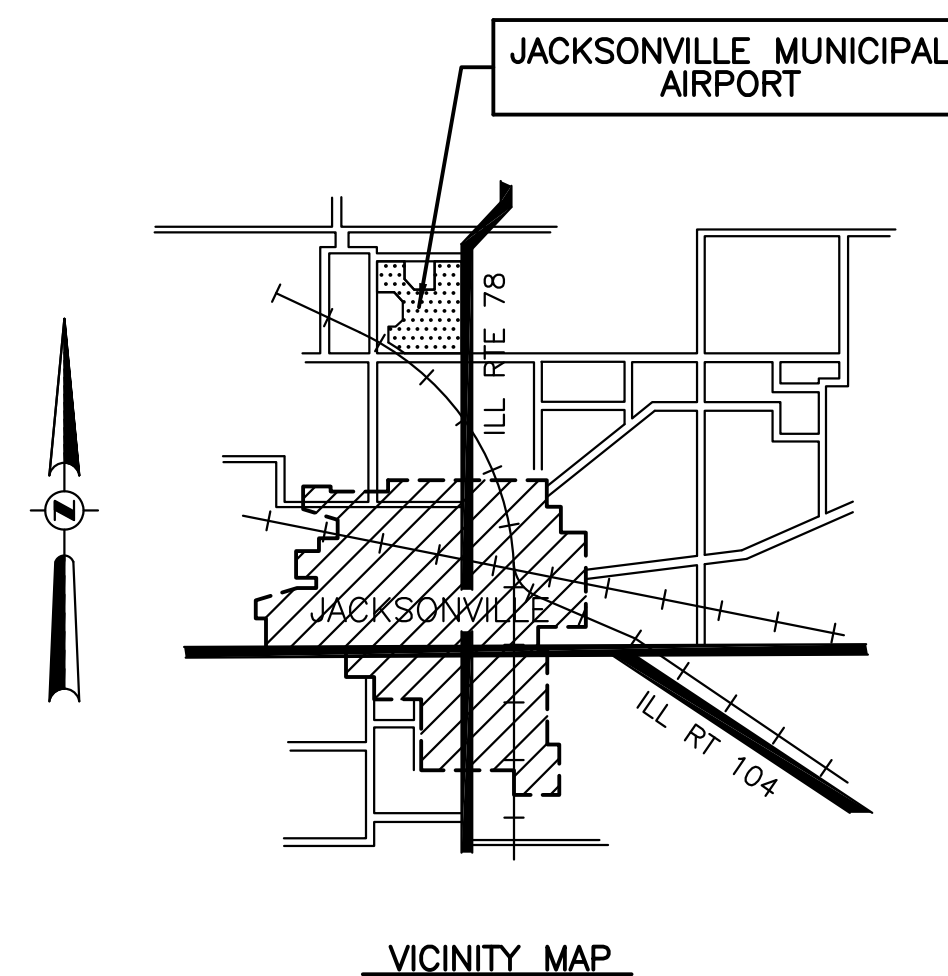
JACKSONVILLE, MORGAN COUNTY, ILLINOIS

REHABILITATE ENTRANCE ROAD

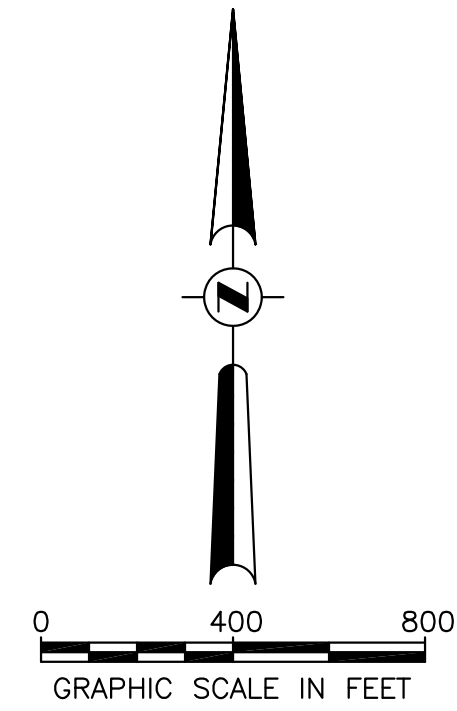
ILLINOIS PROJECT NO. IJX-3998
AIP PROJECT NO. 3-17-0054-B16
JUNE 25, 2010

SUMMARY OF QUANTITIES				
ITEM NO.	DESCRIPTION	UNIT	AS BID QUANTITY	AS BUILT QUANTITY
AR152480	SHOULDER ADJUSTMENT	SQ. YD.	1,256	
AR201660	BITUMINOUS CRACK REPAIR	LIN. FT.	2,585	
AR201666	BASE COURSE CRACK REPAIR	SQ. YD.	64	
AR401110	PAVEMENT PREPARATION	L. SUM	1	
AR401610	BITUMINOUS SURFACE COURSE	TON	928	
AR401655	BUTT JOINT CONSTRUCTION	SQ. YD.	319	
AR603510	BITUMINOUS TACK COAT	GAL.	746	
AR620520	PAVEMENT MARKING - WATERBORNE	SQ. FT.	220	
AR910430	TRAFFIC MAINTENANCE (ROADWAY)	L. SUM	1	

INDEX OF SHEETS	
NO.	DESCRIPTION
1	COVER SHEET
2	IMPROVEMENT AND SAFETY PLAN
3	TYPICAL SECTIONS AND SPECIAL DETAILS
4	PLAN AND PROFILE
5	INTERSECTION ELEVATIONS AND LAYOUT
6	PAVEMENT MARKING PLAN AND DRIVEWAY DETAILS
7-8	STANDARD DRAWINGS



	PLANS PREPARED BY : HUTCHISON ENGINEERING, INC. JACKSONVILLE, ILLINOIS	JACKSONVILLE AIRPORT AUTHORITY
	SUBMITTED <i>[Signature]</i> DATE <u>June 2, 2010</u>	APPROVED <i>[Signature]</i> CHAIRMAN DATE <u>6-8-10</u>



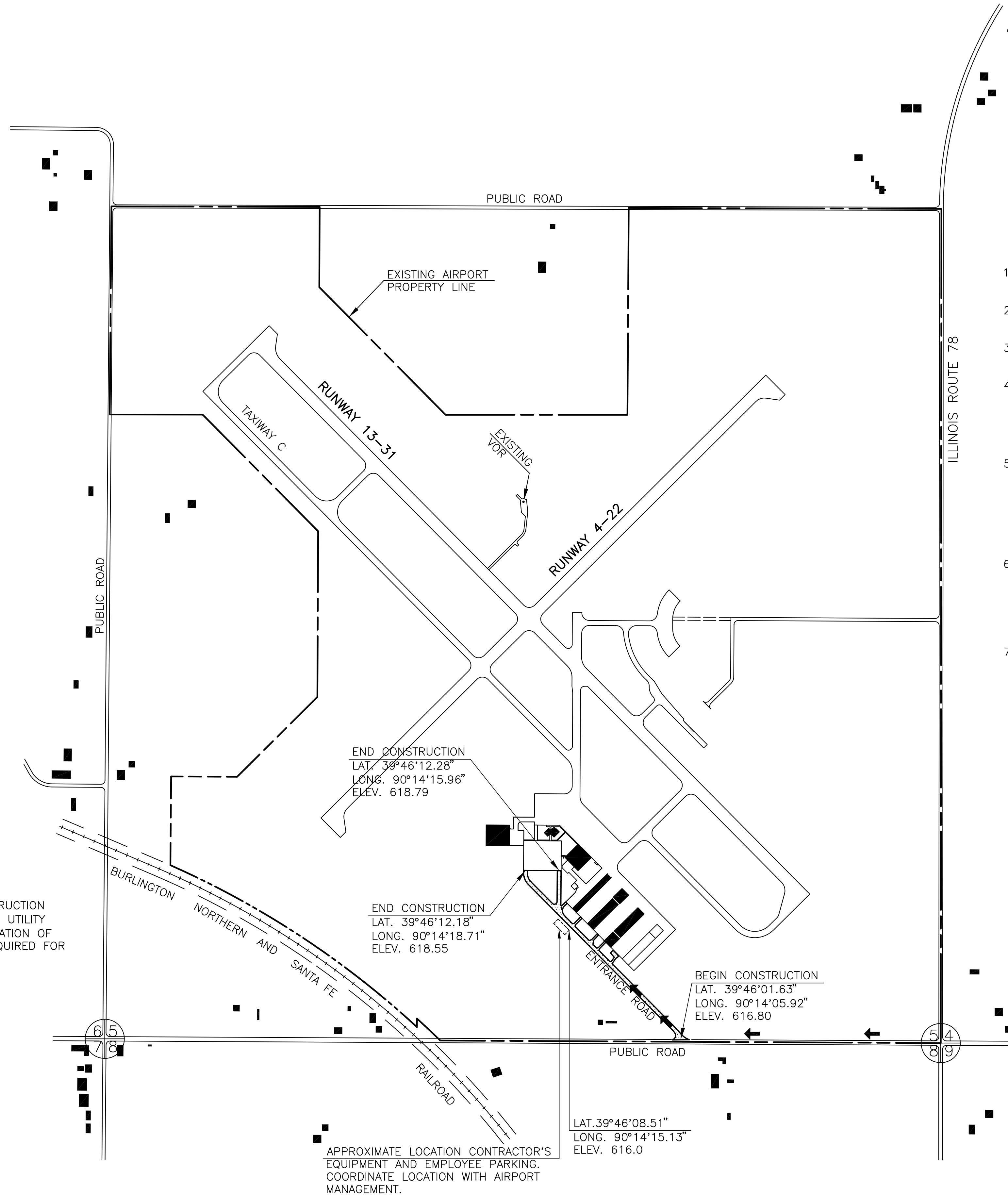
LEGEND

- EXISTING BUILDING
- AIRPORT PROPERTY LINE
- CONTRACTOR'S ACCESS/HAUL ROUTE
- REHABILITATE ENTRANCE ROAD

GENERAL NOTE

1. THE CONTRACTOR SHALL BE RESPONSIBLE FOR PROTECTING UTILITY PROPERTY FROM CONSTRUCTION OPERATIONS. PRIOR TO STARTING WORK, THE CONTRACTOR SHALL CONTACT J.U.L.I.E. (JOINT UTILITY LOCATING INFORMATION FOR EXCAVATORS) PHONE: 1-800-892-0123 TO ARRANGE FOR LOCATION OF UTILITIES IN THE WORK AREA. A MINIMUM OF FORTY-EIGHT HOURS ADVANCE NOTICE IS REQUIRED FOR NON-EMERGENCY WORK.

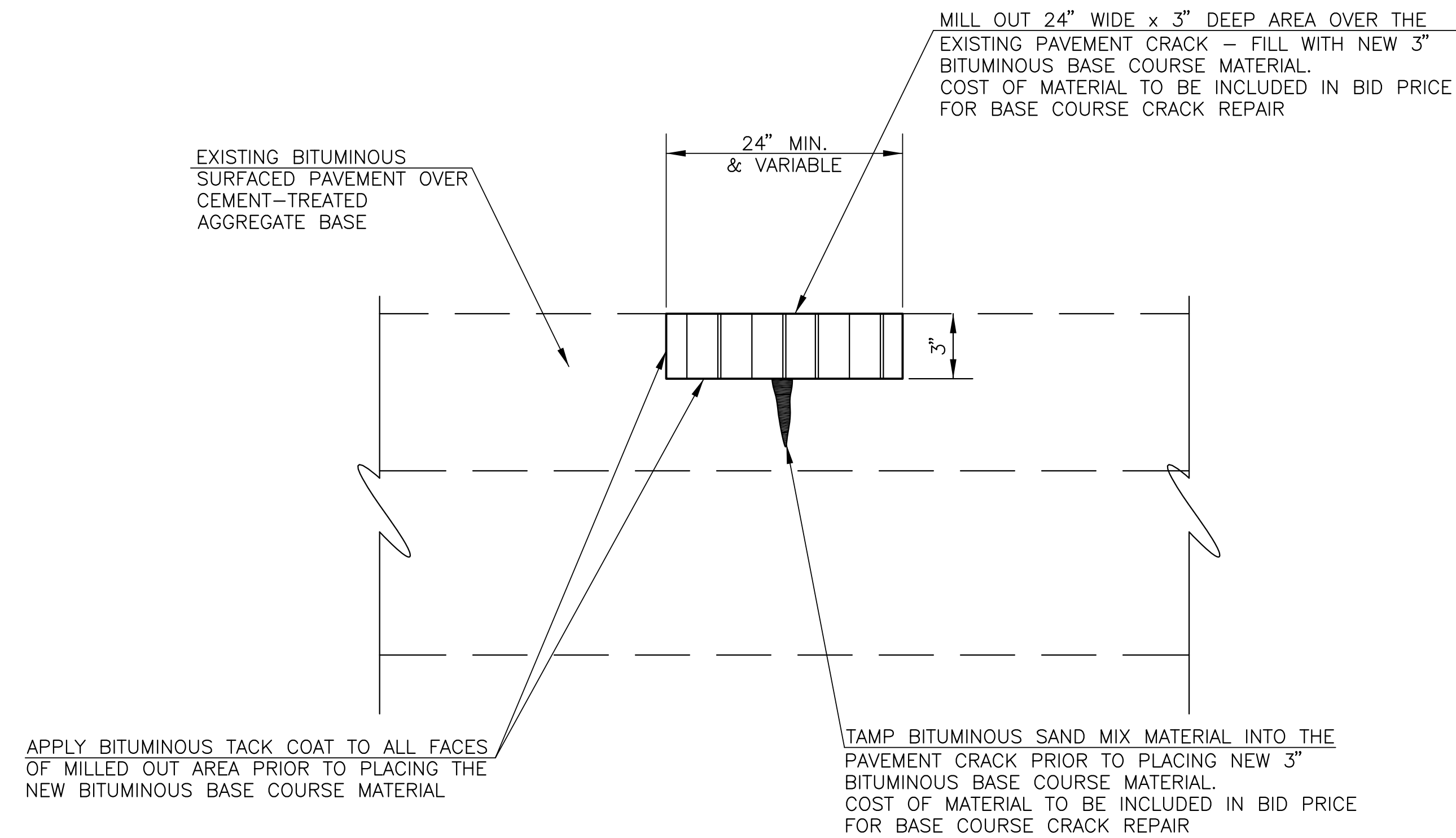
COUNTY - MORGAN
 CITY - JACKSONVILLE
 TOWNSHIP - T. 15 N., R. 10 W.
 SECTION NO. - 5
 ADDRESS - JACKSONVILLE MUNICIPAL AIRPORT
 1956 BALDWIN ROAD
 JACKSONVILLE, ILLINOIS 62650



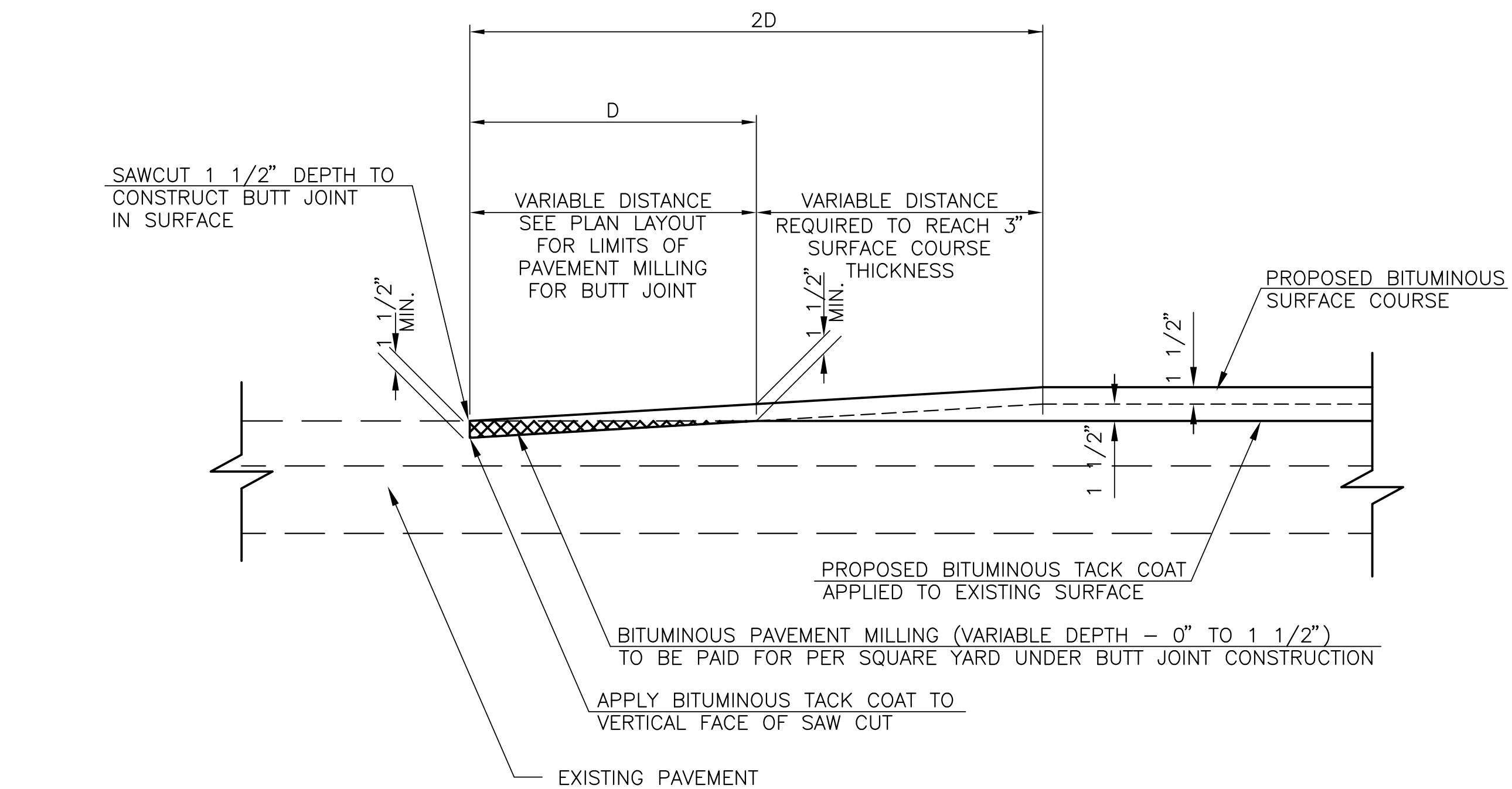
CONSTRUCTION PROCEDURE NOTES

1. THIS PROJECT CONSISTS OF WORK TO REHABILITATE THE ENTRANCE ROAD AT THE JACKSONVILLE MUNICIPAL AIRPORT.
2. THIS PROJECT WILL DISTURB LESS THAN 1 ACRE OF TURFED LAND OUTSIDE THE ENTRANCE ROAD PAVEMENT.
3. THE TALLEST CONSTRUCTION EQUIPMENT UTILIZED ON THE AIRPORT ENTRANCE ROAD SHALL NOT EXCEED 25 FEET.
4. AN AREA IS SHOWN ON THIS PLAN LAYOUT THAT CAN BE USED AS A CONTRACTOR'S EQUIPMENT AND EMPLOYEE PARKING AREA. THE CONTRACTOR IS ENCOURAGED TO PARK HIS EQUIPMENT AT THIS LOCATION AT NIGHT DURING THE CONSTRUCTION PERIOD. DO NOT LEAVE EQUIPMENT ON THE ENTRANCE ROAD DURING NON-WORKING HOURS.
5. THE CONTRACTOR'S WORKMEN AND/OR EQUIPMENT SHALL NOT ENCR OACH INTO THE AIRPORT OPERATIONS AREA DURING THIS CONSTRUCTION EXCEPT WHEN NECESSARY TO PERFORM PAVING THAT ABUTS TO THE WEST SIDE OF THE T-HANGAR AREA. THE CONTRACTOR SHALL CONFINE HIS OPERATIONS TO THE PAVEMENT AND SHOULDERS OF THE AIRPORT ENTRANCE ROAD AND TO THE ACCESS DRIVEWAYS TO THE T-HANGAR AREA THAT ARE ON THE LAND SIDE OF THE AIRPORT.
6. WORK SHALL BE PERFORMED ON THE AIRPORT ENTRANCE ROAD UNDER TRAFFIC BY CLOSING ONE LANE AT A TIME TO PERFORM THE WORK. VEHICULAR TRAFFIC SHALL BE DIRECTED TO THE OPEN LANE DURING THE CONSTRUCTION WORK USING THE TRAFFIC CONTROL DEVICES AND MEASURES SHOWN IN THE TRAFFIC CONTROL STANDARDS INCLUDED IN THE CONSTRUCTION PLANS.
7. THE AREAS OF WORK ON THE ENTRANCE ROAD WILL BE BARRICADED OFF FROM VEHICULAR TRAFFIC AND THE TRAFFIC SHALL BE DIRECTED AROUND THE WORK AREA USING THE OPEN LANE FOR TWO-WAY TRAFFIC UNDER THE CONTROL OF FLAGMEN PROVIDED BY THE CONTRACTOR.

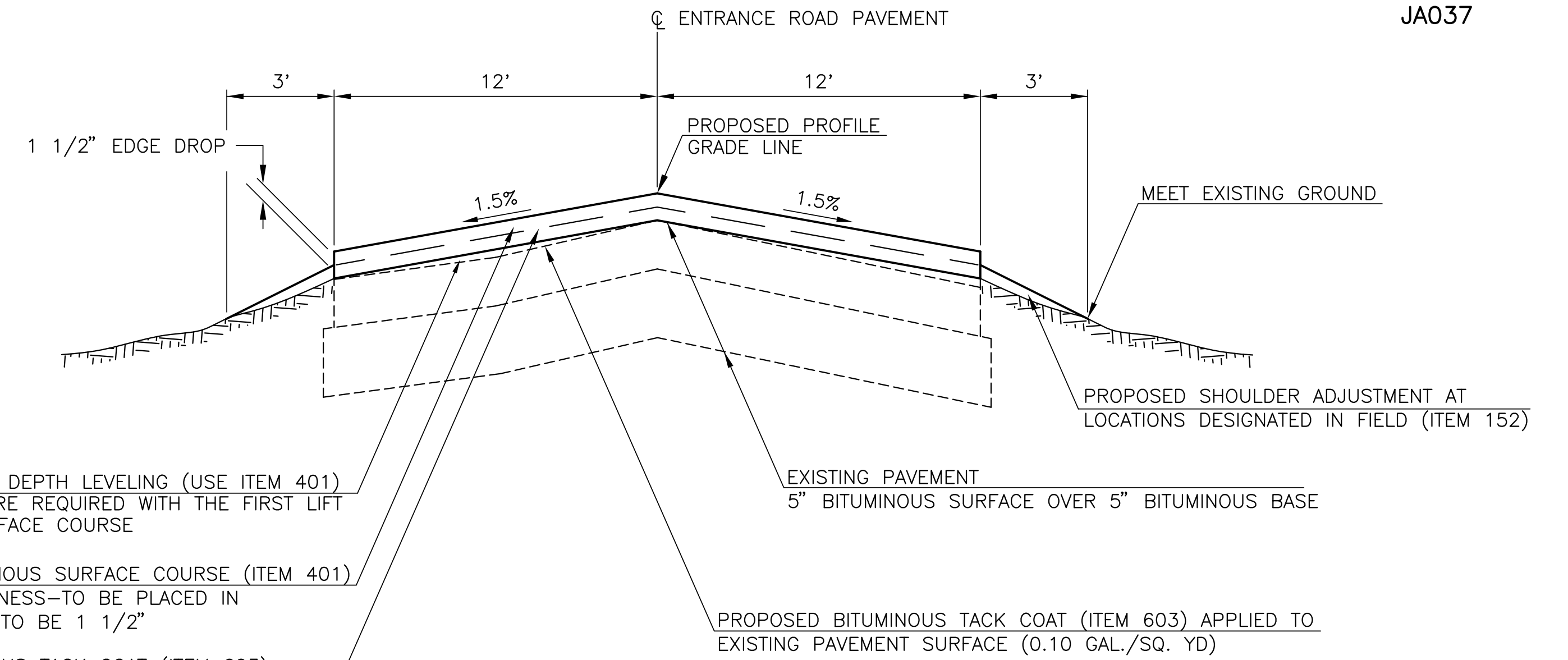
JACKSONVILLE MUNICIPAL AIRPORT JACKSONVILLE, ILLINOIS	
IMPROVEMENT AND SAFETY PLAN	
HUTCHISON ENGINEERING, INC. JACKSONVILLE, ILLINOIS	
DRAWN BY: R.L.R. DATE: JUNE, 2010	ILL. PROJ. NO. IJX-3998 AIP PROJ. NO. 3-17-0054-B16



BASE COURSE CRACK REPAIR DETAIL
NOT TO SCALE



BITUMINOUS BUTT JOINT CONSTRUCTION DETAIL
NOT TO SCALE



RESURFACING TYPICAL SECTION
NOT TO SCALE

GENERAL NOTES

1. OPEN PAVING JOINTS AND/OR CRACKS IN THE EXISTING SURFACE OF THE PAVEMENT SHALL BE DESIGNATED BY THE PROJECT ENGINEER IN THE FIELD TO BE REPAIRED PRIOR TO PLACING THE BITUMINOUS SURFACE COURSE. THIS WORK SHALL BE PERFORMED IN ACCORDANCE WITH THE SPECIAL PROVISIONS FOR THE DESIGNATED TYPE OF CRACK REPAIR.
2. THE QUANTITIES FOR BITUMINOUS CRACK REPAIR HAVE BEEN ESTIMATED BY MEASURING CRACK REPAIR IN SELECTED REPRESENTATIVE LOCATIONS ON THE PAVEMENT. THESE QUANTITIES MAY BE INCREASED OR REDUCED AT THE TIME OF CONSTRUCTION BASED UPON THE CRACK WORK THAT IS MARKED OUT BY THE RESIDENT ENGINEER AFTER FIELD INSPECTION OF THE PAVEMENT CRACKS.
3. ANY SOD WHICH HAS ENCRONCHED UPON THE PAVEMENT EDGE SHALL BE BLADED BACK PRIOR TO THE PROPOSED BITUMINOUS SURFACE COURSE APPLICATION. THE ENTIRE PAVEMENT SURFACE SHALL BE SWEEPED TO REMOVE ALL LOOSE MATERIALS BEFORE THE APPLICATION OF BITUMINOUS TACK COAT. THE COST OF THIS WORK SHALL BE INCLUDED IN THE PRICE BID FOR PAVEMENT PREPARATION.
4. A BITUMINOUS TACK COAT SHALL BE APPLIED TO THE EXISTING PAVEMENT PRIOR TO PLACING THE BITUMINOUS SURFACE COURSE. THE APPLICATION RATE SHOWN ON THE TYPICAL SECTION IS THE TOTAL RATE OF DILUTED TACK COAT. THE EXACT AMOUNT OF DILUTED BITUMINOUS TACK COAT TO BE USED SHALL BE DETERMINED BY THE PROJECT ENGINEER AT THE TIME OF CONSTRUCTION. THE QUANTITY OF BITUMINOUS TACK COAT TO BE PAID FOR SHALL BE THE NUMBER OF GALLONS OF DILUTED EMULSION USED AND ACCEPTED.
5. THE BITUMINOUS SURFACE COURSE SHALL BE ABUTTED TO THE EXISTING PAVEMENT AT BALDWIN ROAD AS SHOWN ON THE BITUMINOUS BUTT JOINT CONSTRUCTION DETAIL. THE EXISTING PAVEMENT CONFINED WITHIN THE BITUMINOUS PAVEMENT MILLING AREA WILL BE REMOVED IN ACCORDANCE WITH THE DETAIL FROM 0 TO 1.5" DEPTH AT THE BUTT JOINT LOCATION. FILLING OF THE MILLED AREA WILL BE MADE USING BITUMINOUS SURFACE COURSE MIX AND WILL BE PAID FOR PER TON FOR BITUMINOUS SURFACE COURSE.
6. AT LOCATIONS WHERE THE EDGE DROP FROM THE FINISHED SURFACE TO THE EXISTING TURF SHOULDER EXCEEDS 1 1/2", THE SHOULDER SHALL BE ADJUSTED AS SHOWN IN THE TYPICAL SECTION USING SOIL OBTAINED OFF SITE THAT IS FREE OF HEAVY SOD, DECAYED VEGETATIVE MATTER, RUBBISH, AGGREGATE AND OTHER UNSUITABLE MATERIAL. THE SHOULDER ADJUSTMENT AREAS SHALL BE FERTILIZED AND SEEDING AND THE COST OF THIS WORK SHALL BE INCLUDED IN THE PRICE BID FOR SHOULDER ADJUSTMENT.
7. ALL AREAS DISTURBED BY THE CONTRACTOR OUTSIDE THE WORK AREA, INCLUDING THE CONTRACTOR'S PARKING AREA SHALL BE REGRADED AND RESEEDING AND/OR RESTORED TO THEIR ORIGINAL CONDITION. THIS RESTORATION SHALL BE ACCOMPLISHED BY THE CONTRACTOR AT HIS OWN EXPENSE UPON COMPLETION OF THIS IMPROVEMENT PROJECT.

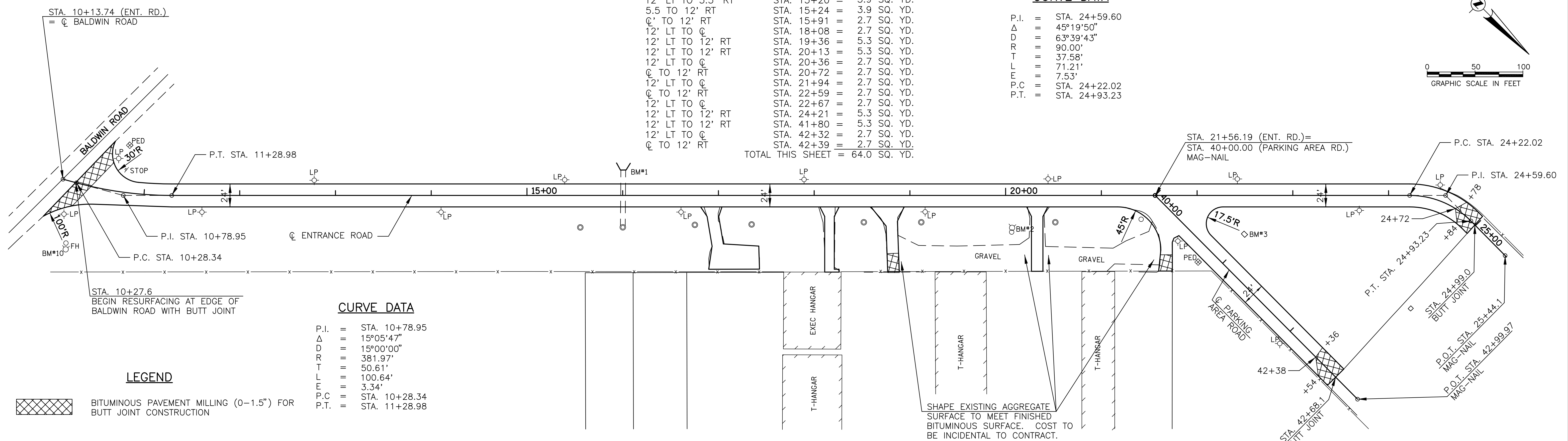
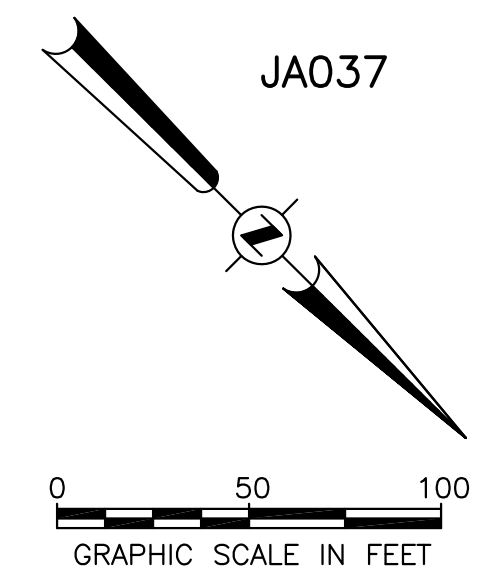
JACKSONVILLE MUNICIPAL AIRPORT JACKSONVILLE, ILLINOIS	
TYPICAL SECTION AND SPECIAL DETAILS	
HUTCHISON ENGINEERING, INC. JACKSONVILLE, ILLINOIS	
DRAWN BY: R.L.R. DATE: JUNE, 2010	ILL. PROJ. NO. IJX-3998 AIP PROJ. NO. 3-17-0054-B16

BASE COURSE CRACK REPAIR

☉ TO 12' RT	STA. 11+49	=	2.7	SQ. YD.
12' LT TO 12' RT	STA. 12+58	=	5.3	SQ. YD.
12' LT TO ☉	STA. 13+28	=	2.7	SQ. YD.
12' LT TO 5.5' RT	STA. 15+20	=	3.9	SQ. YD.
5.5 TO 12' RT	STA. 15+24	=	3.9	SQ. YD.
☉ TO 12' RT	STA. 15+91	=	2.7	SQ. YD.
12' LT TO ☉	STA. 18+08	=	2.7	SQ. YD.
12' LT TO 12' RT	STA. 19+36	=	5.3	SQ. YD.
12' LT TO 12' RT	STA. 20+13	=	5.3	SQ. YD.
12' LT TO ☉	STA. 20+36	=	2.7	SQ. YD.
☉ TO 12' RT	STA. 20+72	=	2.7	SQ. YD.
12' LT TO ☉	STA. 21+94	=	2.7	SQ. YD.
☉ TO 12' RT	STA. 22+59	=	2.7	SQ. YD.
12' LT TO ☉	STA. 22+67	=	2.7	SQ. YD.
12' LT TO 12' RT	STA. 24+21	=	5.3	SQ. YD.
12' LT TO 12' RT	STA. 41+80	=	5.3	SQ. YD.
12' LT TO ☉	STA. 42+32	=	2.7	SQ. YD.
☉ TO 12' RT	STA. 42+39	=	2.7	SQ. YD.
TOTAL THIS SHEET				= 64.0 SQ. YD.

CURVE DATA

P.I.	=	STA. 24+59.60
Δ	=	45°19'50"
D	=	63°39'43"
R	=	90.00'
L	=	37.58'
T	=	71.21'
E	=	7.53'
P.C.	=	STA. 24+22.02
P.T.	=	STA. 24+93.23



CURVE DATA

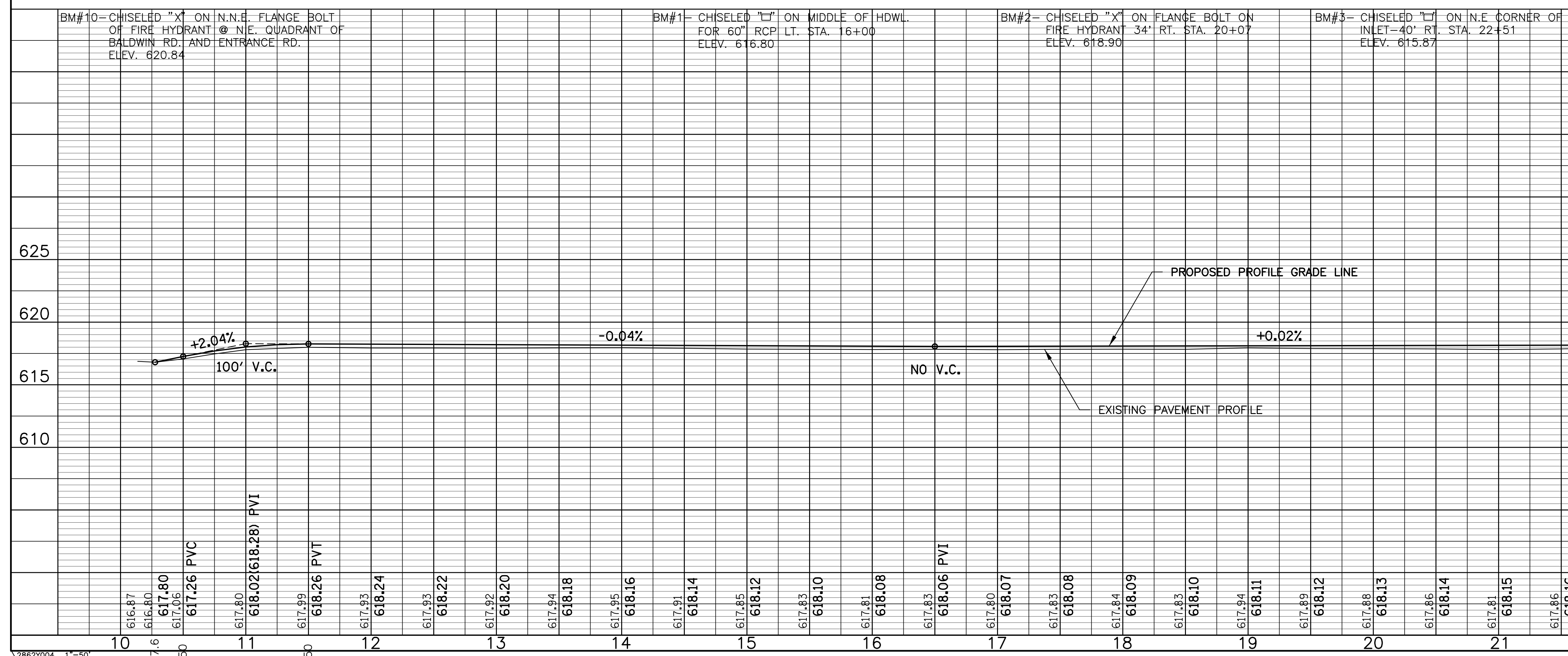
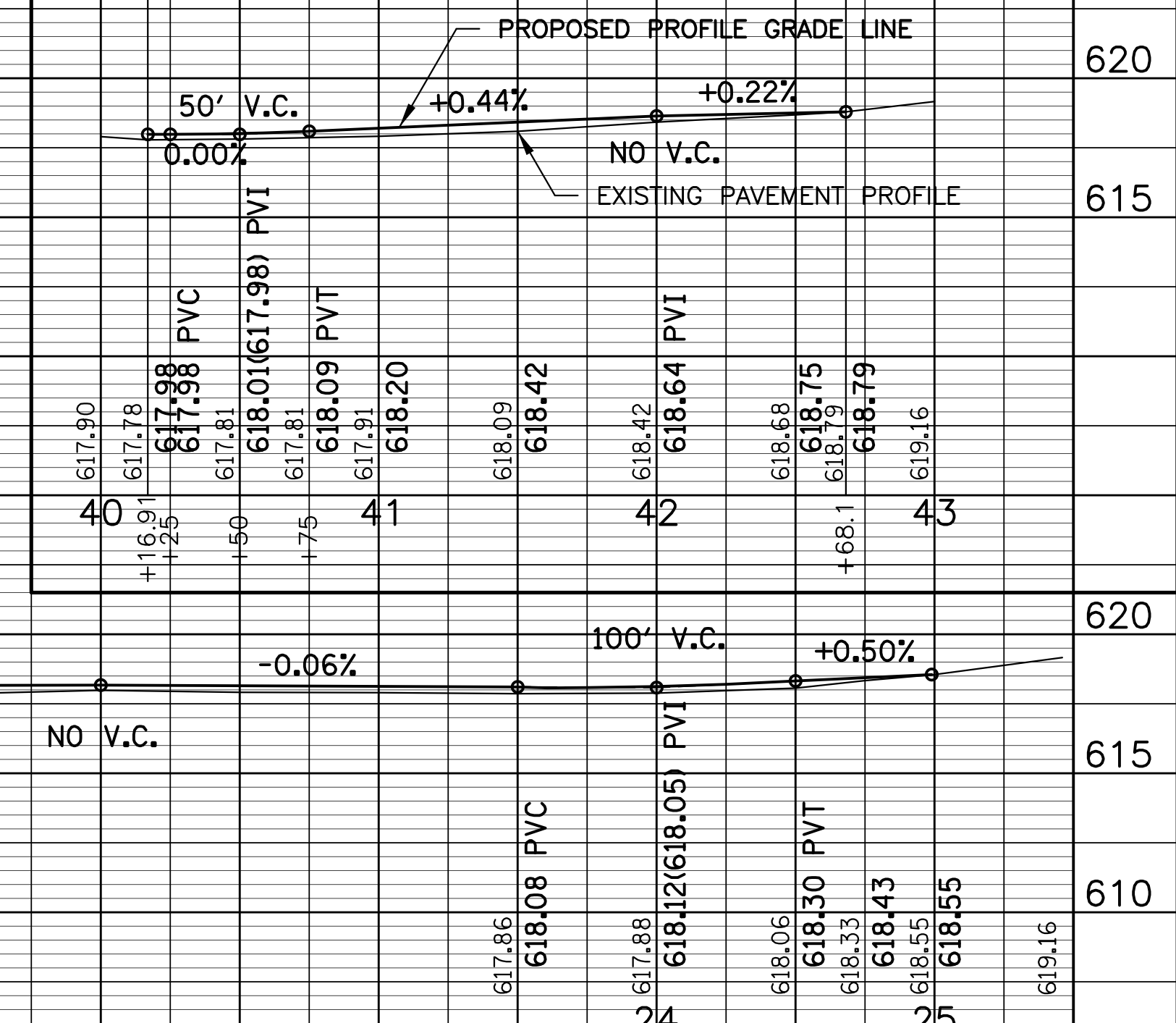
P.I.	=	STA. 10+78.95
Δ	=	15°05'47"
D	=	15°00'00"
R	=	381.97'
T	=	50.61'
L	=	100.64'
E	=	3.34'
P.C.	=	STA. 10+28.34
P.T.	=	STA. 11+28.98

LEGEND

BITUMINOUS PAVEMENT MILLING (0-1.5") FOR BUTT JOINT CONSTRUCTION

BM#10- CHISELED "X" ON N.N.E. FLANGE BOLT OF FIRE HYDRANT @ N.E. QUADRANT OF BALDWIN RD. AND ENTRANCE RD. ELEV. 620.84
 BM#1- CHISELED "L" ON MIDDLE OF HDWL. FOR 60" RCP LT. STA. 16+00 ELEV. 616.80
 BM#2- CHISELED "X" ON FLANGE BOLT ON FIRE HYDRANT 34' RT. STA. 20+07 ELEV. 618.90
 BM#3- CHISELED "L" ON N.E. CORNER OF INLET-40' RT. STA. 22+51 ELEV. 615.87

PARKING AREA ROAD PROFILE

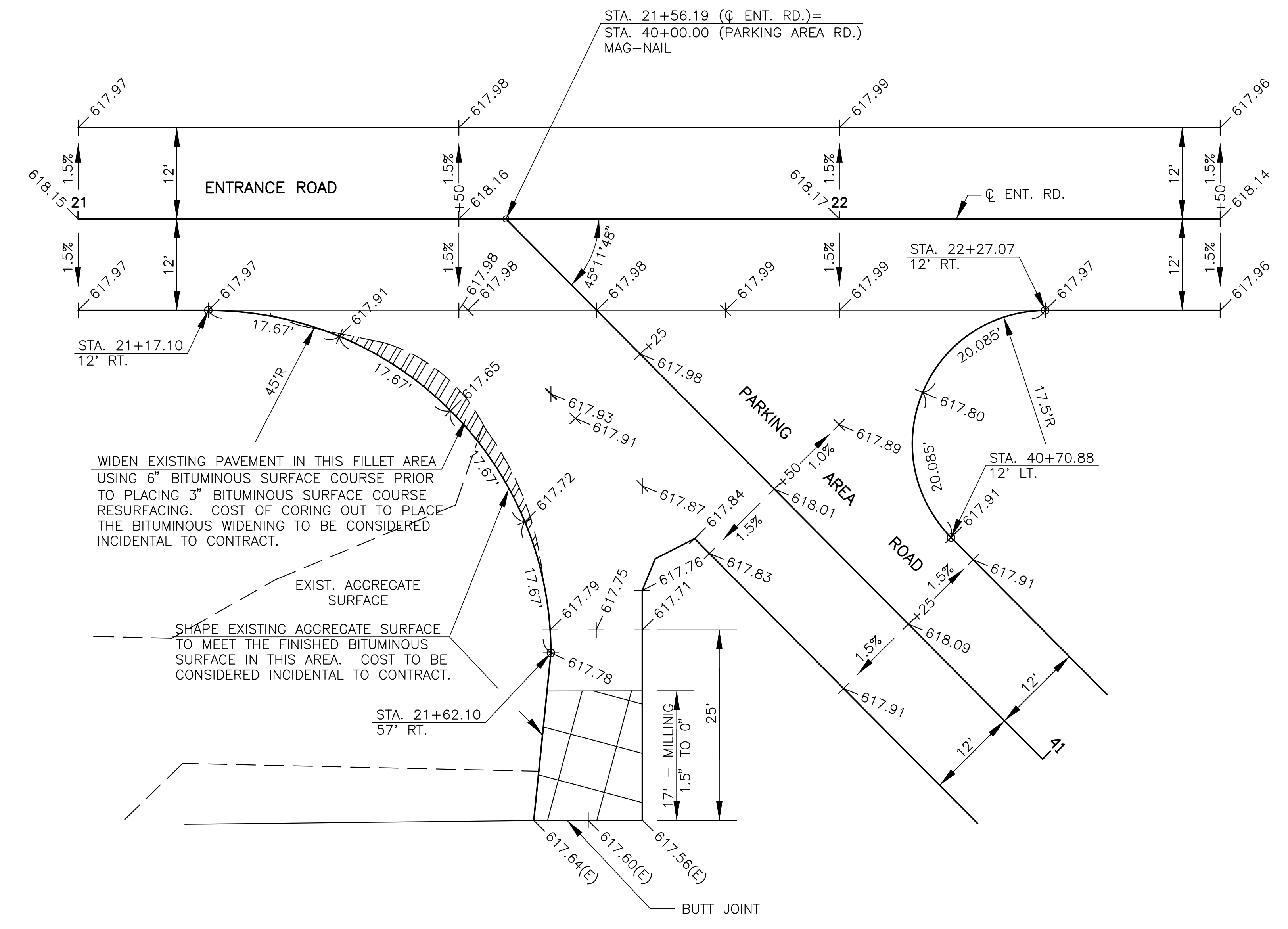
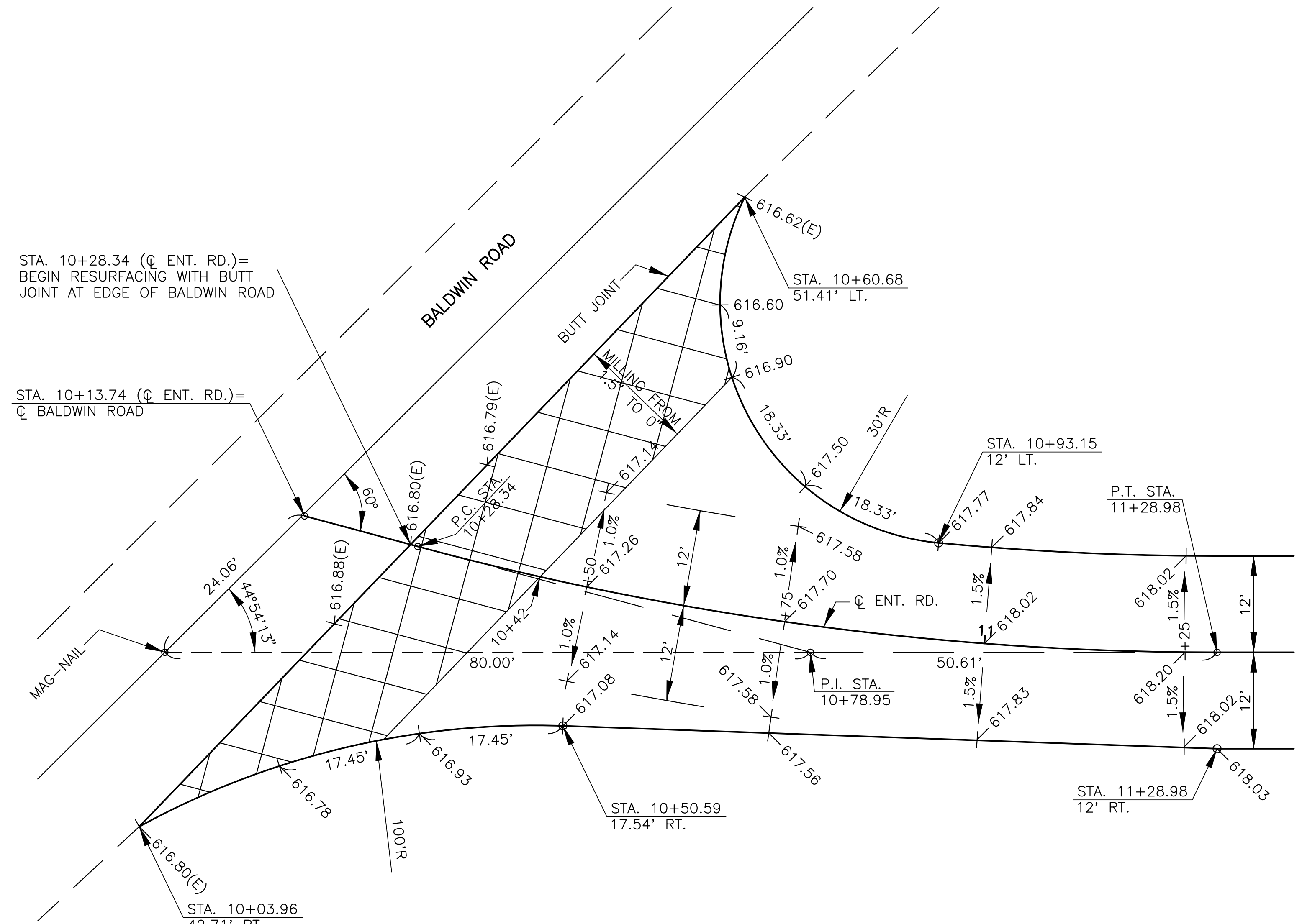
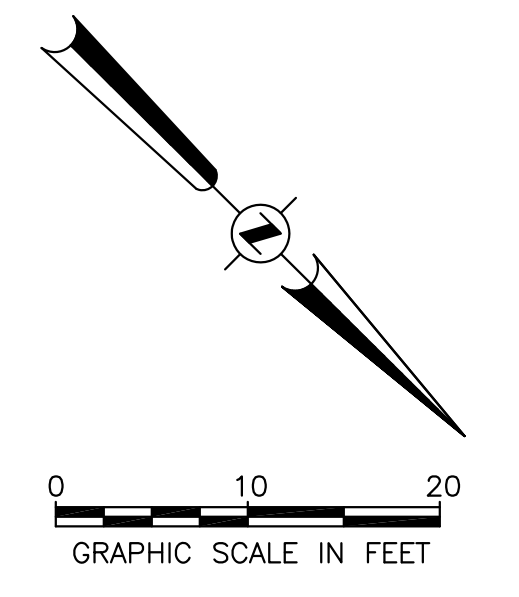


JACKSONVILLE MUNICIPAL AIRPORT
 JACKSONVILLE, ILLINOIS

**ENTRANCE ROAD
 PLAN AND PROFILE**

HUTCHISON ENGINEERING, INC.
 JACKSONVILLE, ILLINOIS

DRAWN BY: R.L.R. ILL. PROJ. NO. IJX-3998
 DATE : JUNE, 2010 AIP PROJ. NO. 3-17-0054-B16



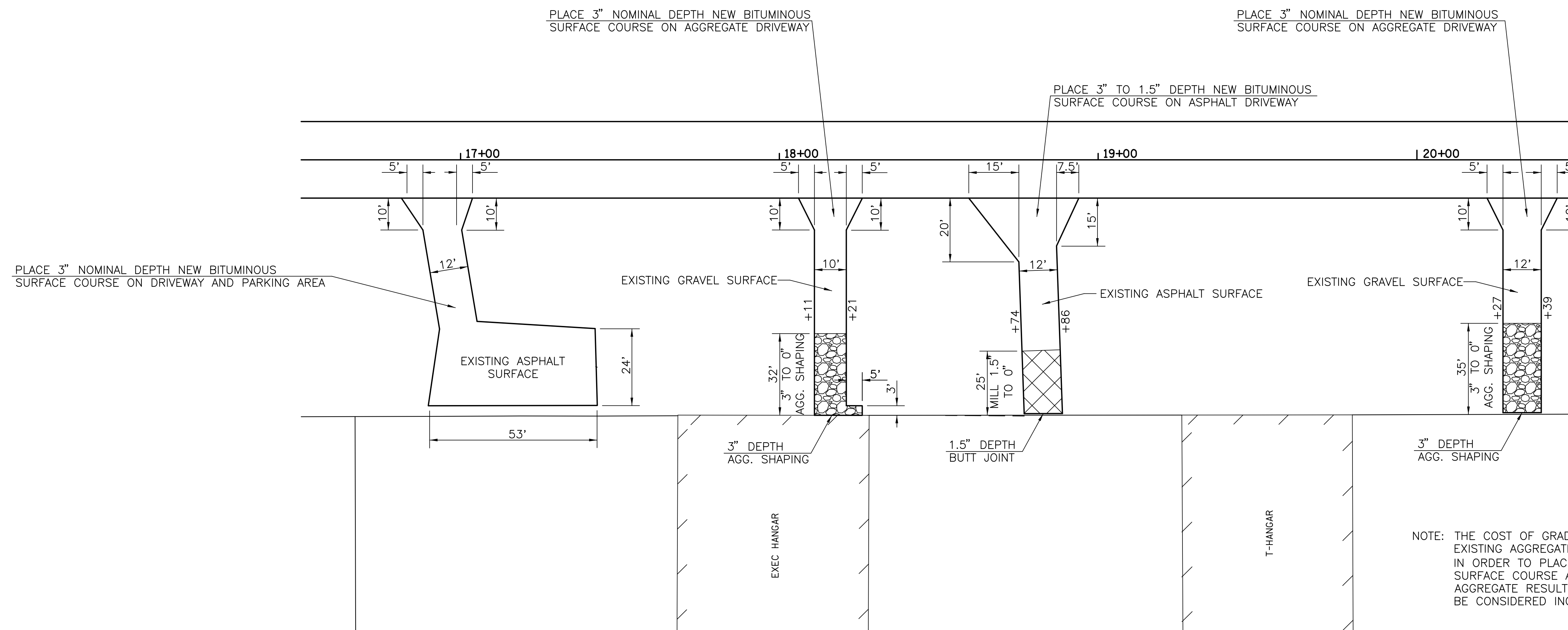
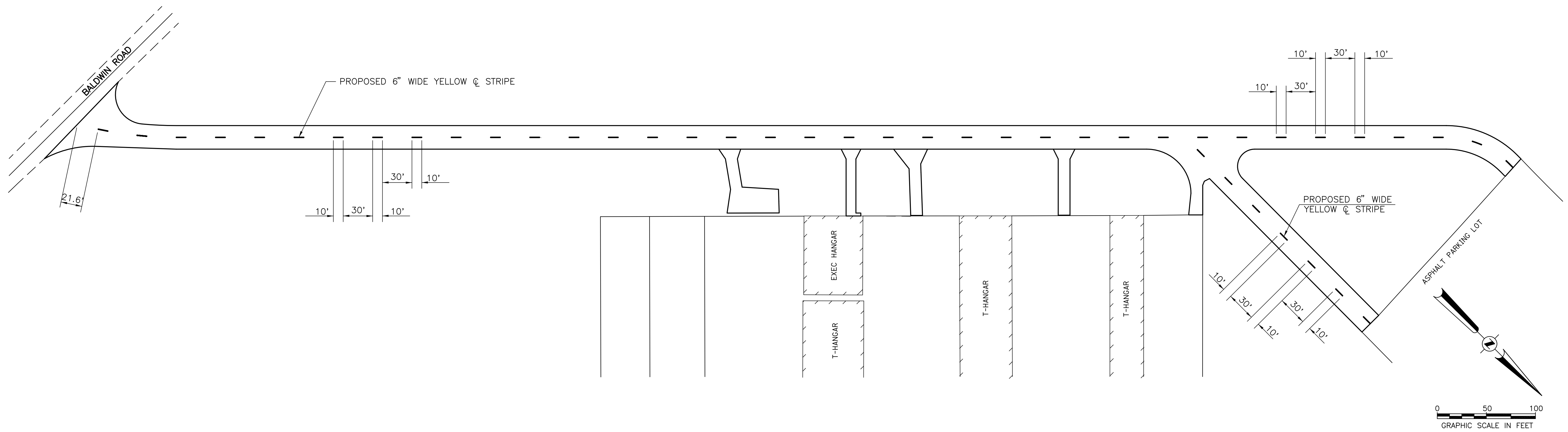
GENERAL NOTES

1. ELEVATIONS SHOWN ARE TOP OF FINISHED ELEVATIONS. (E) SHOWN AFTER AN ELEVATION DENOTES AN EXISTING ELEVATION.
2. WHERE PROPOSED BITUMINOUS SURFACE ABUTS EXISTING PAVEMENT, THE EXISTING PAVEMENT SHALL BE CUT TO PRODUCE A STRAIGHT VERTICAL FACE TO ABUT THE PROPOSED SURFACE TO. PRIOR TO SURFACING, THE VERTICAL FACES OF ALL ABUTTING EXISTING PAVEMENT SHALL BE PAINTED WITH LIQUID ASPHALT. COST OF THIS WORK SHALL BE CONSIDERED INCIDENTAL TO THE CONTRACT.

LEGEND

- BITUMINOUS PAVEMENT MILLING (0-1.5") FOR BUTT JOINT CONSTRUCTION
- BITUMINOUS PAVEMENT WIDENING

JACKSONVILLE MUNICIPAL AIRPORT JACKSONVILLE, ILLINOIS	
INTERSECTION ELEVATIONS AND LAYOUT	
HUTCHISON ENGINEERING, INC. JACKSONVILLE, ILLINOIS	
DRAWN BY: R.L.R. DATE : JUNE, 2010	ILL. PROJ. NO. IJX-3998 AIP PROJ. NO. 3-17-0054-B16



LEGEND

- SHAPE AND GRADE EXISTING AGGREGATE TO PROVIDE FOR 3" BITUMINOUS SURFACE COURSE PLACEMENT. COST OF SHAPING AND GRADING TO BE INCIDENTAL TO CONTRACT.
- BITUMINOUS PAVEMENT MILLING (0" - 1.5") FOR BUTT JOINT CONSTRUCTION

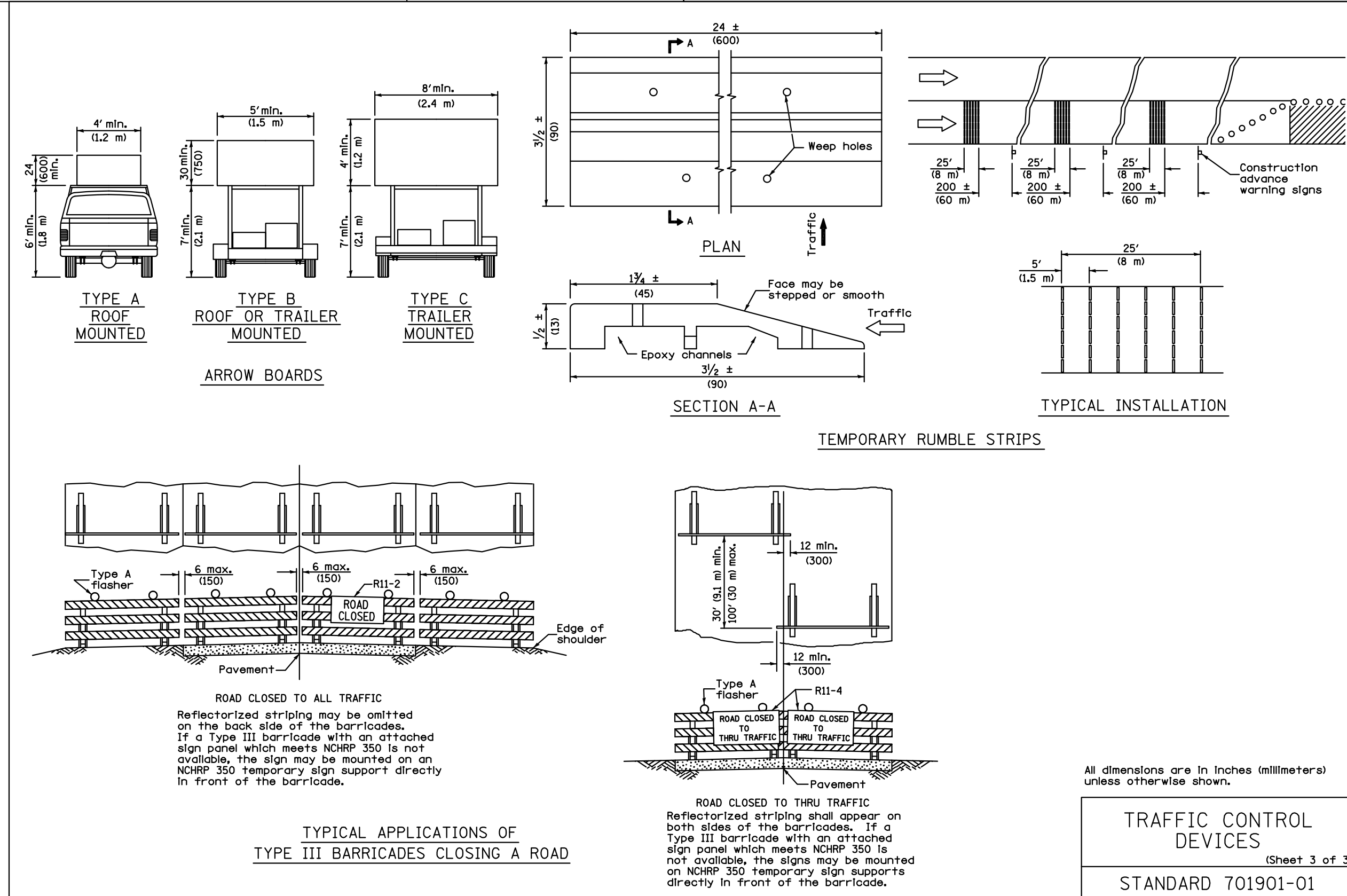
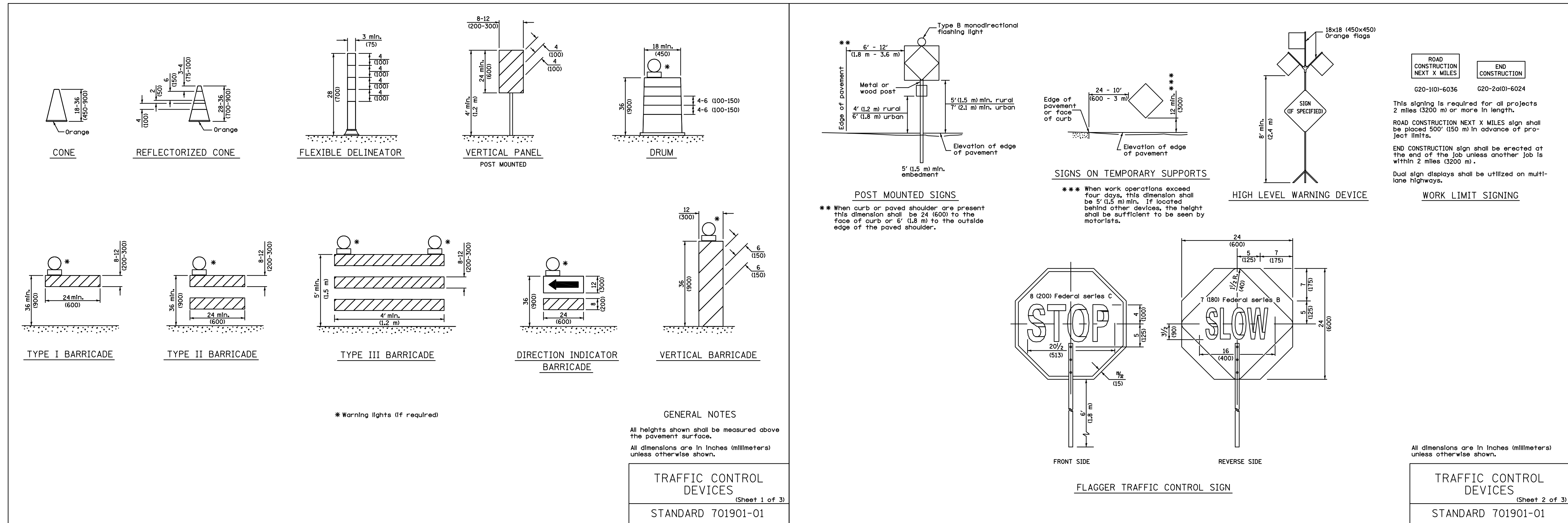
NOTE: THE COST OF GRADING AND SHAPING THE EXISTING AGGREGATE SURFACE OF THE DRIVEWAYS IN ORDER TO PLACE THE NEW 3" BITUMINOUS SURFACE COURSE AND THE DISPOSAL OF AGGREGATE RESULTING FROM THE SHAPING SHALL BE CONSIDERED INCIDENTAL TO THE CONTRACT.

JACKSONVILLE MUNICIPAL AIRPORT
JACKSONVILLE, ILLINOIS

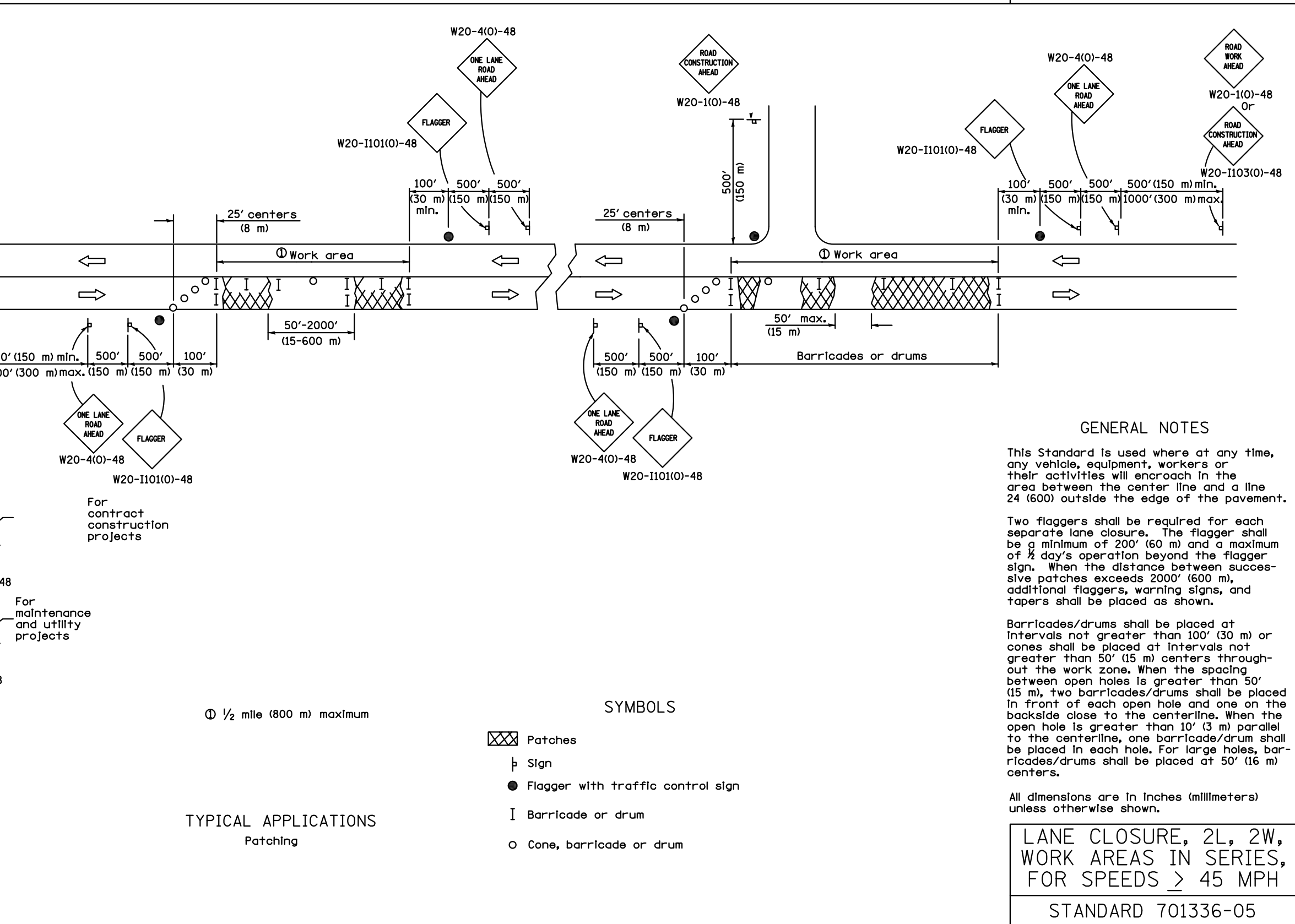
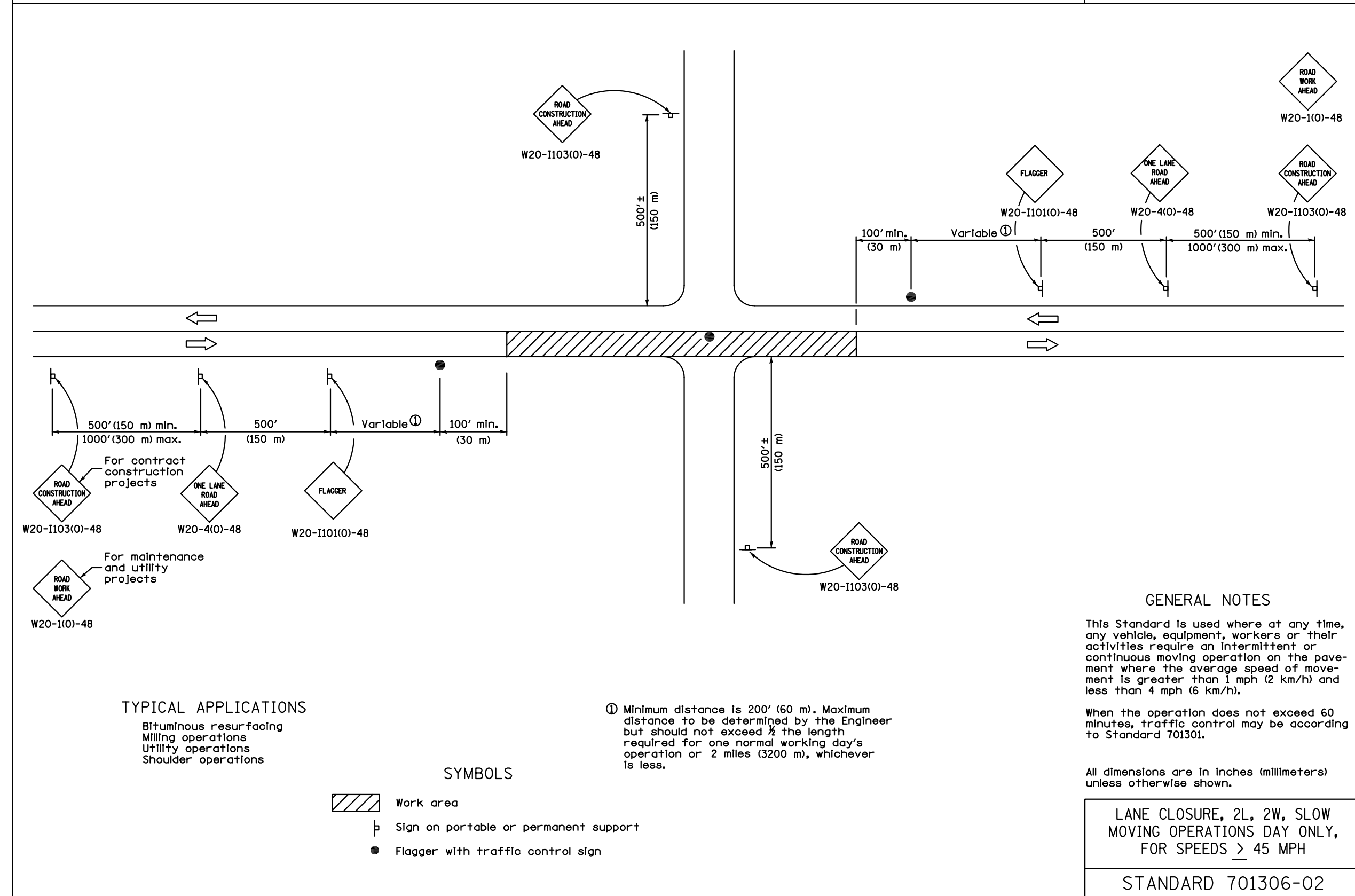
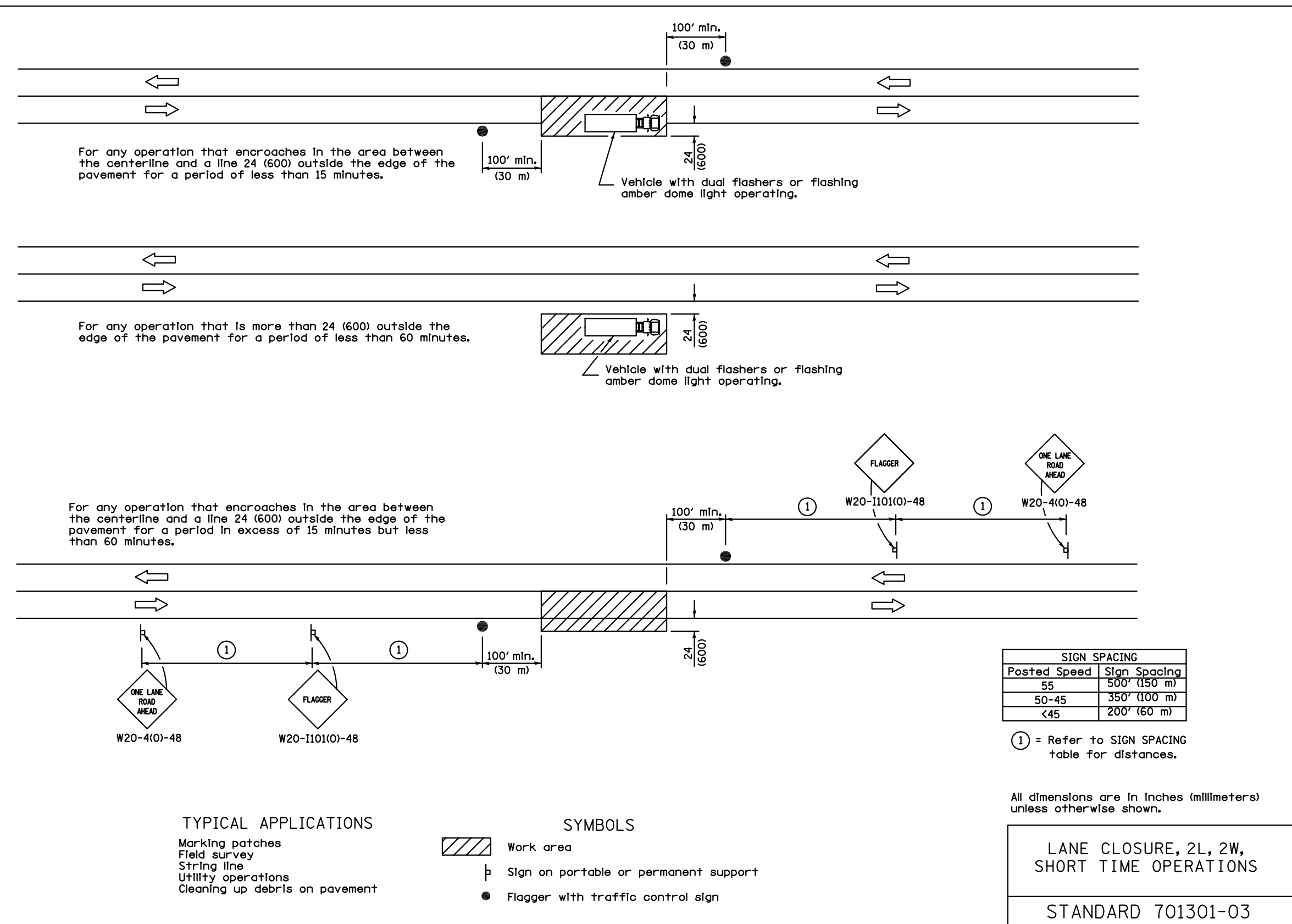
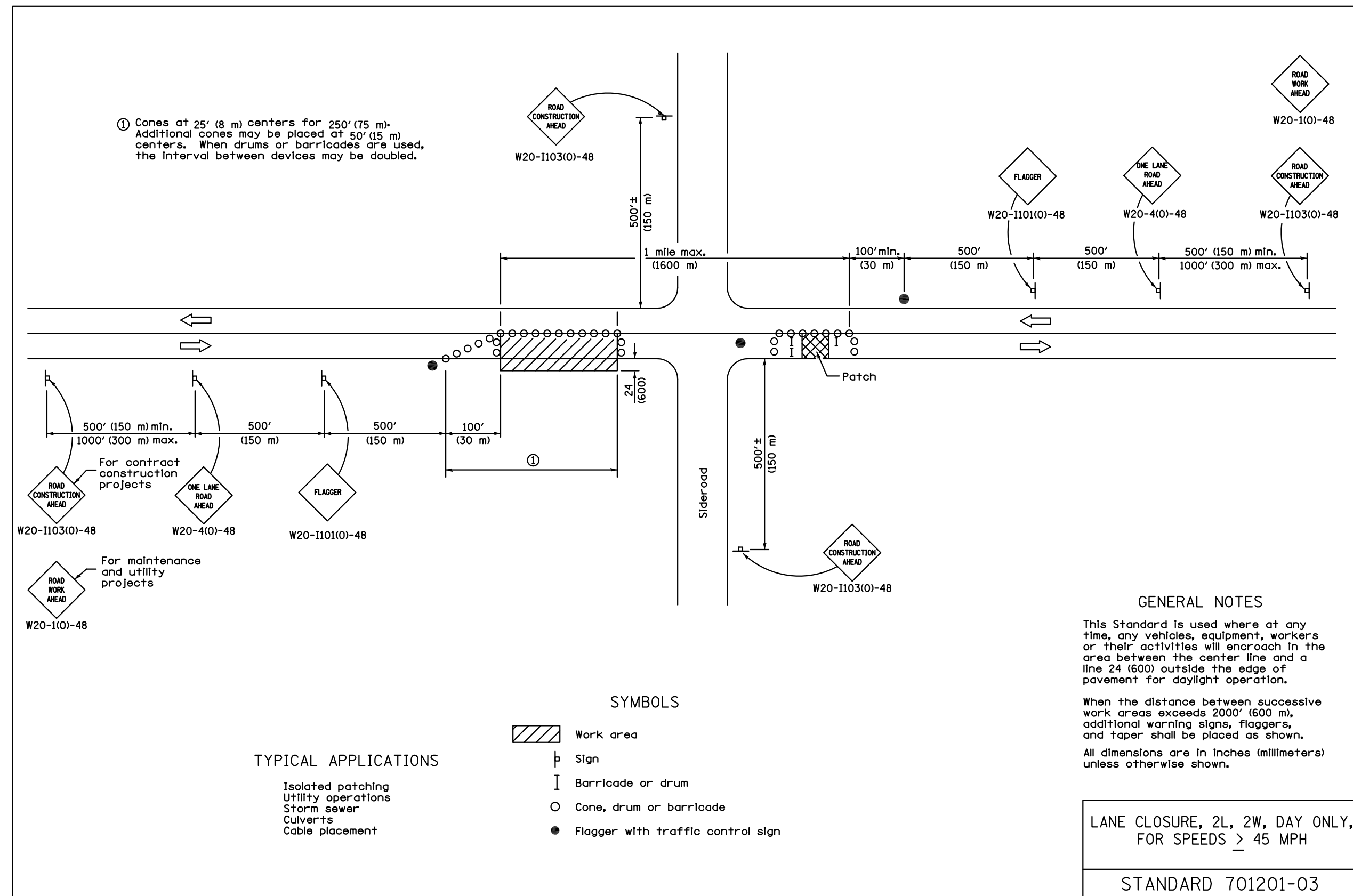
**PAVEMENT MARKING PLAN
AND DRIVEWAY DETAILS**

HUTCHISON ENGINEERING, INC.
JACKSONVILLE, ILLINOIS

DRAWN BY: R.L.R. ILL. PROJ. NO. IJX-3998
DATE: JUNE, 2010 AIP PROJ. NO. 3-17-0054-B16



JACKSONVILLE MUNICIPAL AIRPORT JACKSONVILLE, ILLINOIS	
STANDARDS	
HUTCHISON ENGINEERING, INC. JACKSONVILLE, ILLINOIS	
DRAWN BY: R.L.R. DATE: JUNE, 2010	ILL. PROJ. NO. IJX-3998 AIP PROJ. NO. 3-17-0054-B16



JACKSONVILLE MUNICIPAL AIRPORT
 JACKSONVILLE, ILLINOIS

STANDARDS

HUTCHISON ENGINEERING, INC.
 JACKSONVILLE, ILLINOIS

DRAWN BY: R.L.R. ILL. PROJ. NO. IJX-3998
 DATE: JUNE, 2010 AIP PROJ. NO. 3-17-0054-B16