

INDEX OF SHEETS

- 1 . COVER SHEET
- 2 . GENERAL NOTES
- 3 - 5 . SUMMARY OF QUANTITIES
- 6 . TYPICAL SECTIONS
- 7 . SCHEDULES
- 8 . TRAFFIC CONTROL STAGING DETAILS
- 9 . STEEL PLATE BEAM GUARDRAIL
- 10 . GENERAL PLAN AND ELEVATION FOR STRUCTURE NO. 047-2510
- 11 . REMOVAL DETAILS FOR STRUCTURE NO. 047-2510
- 12 . CONSTRUCTION DETAILS FOR STRUCTURE NO. 047-2511
- 13 . TEMPORARY INFORMATION SIGNING
- 14 . MISCELLANEOUS DETAILS
- 15 . SOIL BORING
- 16 . CROSS SECTION

STANDARDS

- 000001-08 STANDARD SYMBOLS, ABBREVIATIONS AND PATTERNS
- 001001-02 AREAS OF REINFORCEMENT BARS
- 001006 DECIMAL OF AN INCH AND OF A FOOT
- 442201-03 CLASS C AND D PATCHES
- 482006-03 HMA SHOULDER ADJACENT TO FLEXIBLE PAVEMENT
- 630001-12 STEEL PLATE BEAM GUARDRAIL
- 630106-02 LONG-SPAN GUARDRAIL OVER CULVERT
- 701001-02 OFF-ROAD OPERATIONS 2L, 2W, MORE THAN 15' (4.5 m) AWAY
- 701006-05 OFF-ROAD OPERATIONS 2L, 2W, 15' (4.5 m) TO 24" (600 mm) FROM PAVEMENT EDGE
- 701201-05 LANE CLOSURE, 2L, 2W, DAY ONLY, FOR SPEEDS ≥ 45 MPH
- 701206-05 LANE CLOSURE, 2L, 2W, NIGHT ONLY, FOR SPEEDS ≥ 45 MPH
- 701301-04 LANE CLOSURE, 2L, 2W, SHORT TIME OPERATIONS
- 701311-03 LANE CLOSURE, 2L, 2W, MOVING OPERATIONS - DAY ONLY
- 701316-13 LANE CLOSURE, 2L, 2W, BRIDGE REPAIR, FOR SPEEDS ≥ 45 MPH
- 701326-04 LANE CLOSURE, 2L, 2W, PAVEMENT WIDENING, FOR SPEEDS ≥ 45 MPH
- 701901-08 TRAFFIC CONTROL DEVICES
- 782006-01 GUARDRAIL AND BARRIER WALL REFLECTOR MOUNTING DETAILS

**STATE OF ILLINOIS
DEPARTMENT OF TRANSPORTATION**

**PROPOSED
HIGHWAY PLANS**

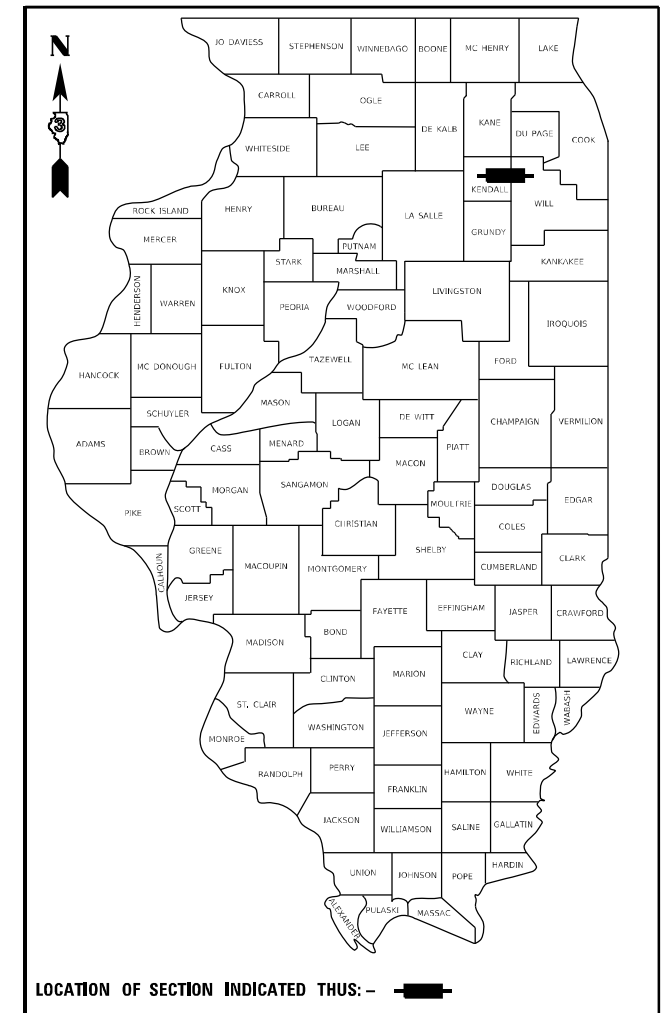
**F.A.P. ROUTE 607 (US 52)
SECTION (130)CLV
BOX CULVERT REPAIRS
KENDALL COUNTY**

C-93-107-20

F.A.P. RTE.	SECTION	COUNTY	TOTAL SHEETS	SHEET NO.
607	(130)CLV	KENDALL	15*	1
		ILLINOIS	CONTRACT NO. 66L21	

* 15 + 1 = 16 TOTAL SHEETS

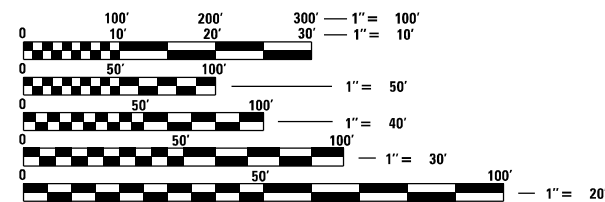
D-93-073-20



FUNCTIONAL CLASSIFICATION

**RURAL
MINOR ARTERIAL
F.A.P. ROUTE 607 (US 52)
2019 ADT = 4500
P.V. 81.2% S.U. 4.4% M.U. 14.4%**

PROJECT LOCATION
STRUCTURE NO. 047-2510
STA. 398+51
10' x 4' CONCRETE BOX CULVERT
APPROXIMATELY 7.5 MILES EAST OF IL ROUTE 47



FULL SIZE PLANS HAVE BEEN PREPARED USING STANDARD ENGINEERING SCALES. REDUCED SIZED PLANS WILL NOT CONFORM TO STANDARD SCALES. IN MAKING MEASUREMENTS ON REDUCED PLANS, THE ABOVE SCALES MAY BE USED.

J.U.L.I.E.
JOINT UTILITY LOCATION INFORMATION FOR EXCAVATORS
1-800-892-0123
OR 811

**PROJECT ENGINEER JOE KANNEL P.E.
UNIT CHIEF RON WOODSHANK
PHONE (815)434-6131
CONTRACT NO. 66L21**



POINT LOCATION

STATE OF ILLINOIS
DEPARTMENT OF TRANSPORTATION

SUBMITTED June 21, 2021

[Signature]
REGIONAL ENGINEER

June 25, 2021

[Signature]
ENGINEER OF DESIGN AND ENVIRONMENT

June 25, 2021

[Signature]
DIRECTOR OF HIGHWAYS PROJECT IMPLEMENTATION

**PRINTED BY THE AUTHORITY
OF THE STATE OF ILLINOIS**

GENERAL NOTES

THE ENGINEER WILL BE THE SOLE JUDGE CONCERNING CURING TIME FOR THE VARIOUS HMA LIFTS.

THE FINISHED EARTHWORK SHALL HAVE A VEGETATION SUSTAINING SOIL COVERING THE TOP FOUR INCHES IN AREAS TO BE SEEDED OR SODDED. THE VEGETATION SUSTAINING SOIL REQUIRED WILL NOT BE PAID FOR SEPARATELY BUT WILL BE INCLUDED IN THE COST OF FURISHED EXCAVATION.

THE FOLLOWING RATES OF APPLICATION HAVE BEEN USED IN CALCULATING PLAN QUANTITIES:

GRANULAR MATERIALS	2.05	TONS / CU YD
HMA RESURFACING	112	LBS / SQ YD / IN
SHORT TERM PAVEMENT MARKING	10	FT /100 FT OF APPLICATION

COMMITMENTS

STATE OF ILLINOIS
DEPARTMENT OF TRANSPORTATION
DISTRICT THREE
AS BUILT INFORMATION

SUPERVISING CONSTRUCTION FIELD ENGINEER

RESIDENT ENGINEER / TECHNICIAN

START & END DATES
OF CONSTRUCTION:

INSPECTORS:

DATE: _____

PREPARED BY: _____
DISTRICT STUDIES & PLANS ENGINEER

EXAMINED BY: _____
DISTRICT CONSTRUCTION ENGINEER

DISTRICT MATERIALS ENGINEER

DISTRICT OPERATIONS ENGINEER

HMA MIXTURE REQUIREMENT TABLE

LOCATION(S) :	HOT-MIX ASPHALT SHOULDERS		CLASS D PATCH	
	HMA BINDER	HMA SURFACE	HMA BINDER	HMA SURFACE
MIXTURE USE(S) :	BOTTOM LIFTS	TOP LIFT	BOTTOM LIFTS	TOP LIFT
BINDER GRADE (PG):	PG 64-22	PG 64-22	PG 64-22	PG 64-22
DESIGN AIR VOIDS:	4.0% @ N50	4.0% @ N50	4.0% @ N50	4.0% @ N50
MIXTURE COMPOSITION: (MIXTURE GRADATION)	IL 19.0	IL 9.5	IL 19.0	IL 9.5
FRICTION AGGREGATE:		MIXTURE C		MIXTURE C
MIXTURE WEIGHT:	112.0 LB/SY/IN	112.0 LB/SY/IN	112.0 LB/SY/IN	112.0 LB/SY/IN
QUALITY MANAGEMENT PROGRAM:	QC/QA	QC/QA	QC/QA	QC/QA
SUBLOT SIZE:	N/A	N/A	N/A	N/A
DENSITY TEST METHOD:	CORES	CORES	CORES	CORES

MODEL: Default
 FILE NAME: \\paulhanrahan.com\dca\illinois\dot\Documents\DOT_Offices\District 3\Projects\0366L21\CADD\0366L21-cover.dgn

USER NAME = woodshank1	DESIGNED -	REVISED -
	DRAWN -	REVISED -
PLOT SCALE = 40,0000 */ in.	CHECKED -	REVISED -
PLOT DATE = 5/3/2021	DATE -	REVISED -

**STATE OF ILLINOIS
DEPARTMENT OF TRANSPORTATION**

GENERAL NOTES

SCALE: SHEET 1 OF 1 SHEETS STA. TO STA.

F.A.P. RTE.	SECTION	COUNTY	TOTAL SHEETS	SHEET NO.
607	(130)CLV	KENDALL	16	2
CONTRACT NO. 66L21			ILLINOIS FED. AID PROJECT	

CONSTRUCTION CODE
CONTRACT MAINTENANCE
100% STATE
BOX CULVERT
0004
S.N. 047-2510

CODE NO.	ITEM	UNIT	TOTAL QUANTITY	
20200500	EARTH EXCAVATION (WIDENING)	CU YD	28	28
20400800	FURNISHED EXCAVATION	CU YD	6	6
48101200	AGGREGATE SHOULDERS, TYPE B	TON	6	6
48203029	HOT-MIX ASPHALT SHOULDERS, 8"	SQ YD	126	126
50102400	CONCRETE REMOVAL	CU YD	15	15
50800205	REINFORCEMENT BARS, EPOXY COATED	POUND	3200	3200
52200020	TEMPORARY SOIL RETENTION SYSTEM	SQ FT	826	826
54002080	EXPANSION BOLTS 3/4 INCH X 18 INCH	EACH	48	48
54003000	CONCRETE BOX CULVERTS	CU YD	17.4	17.4
* 63000001	STEEL PLATE BEAM GUARDRAIL, TYPE A, 6 FOOT POSTS	FOOT	100	100
* 63000350	LONG-SPAN GUARDRAIL OVER CULVERT, 12 FT 6 IN SPAN	FOOT	75	75
* 63100167	TRAFFIC BARRIER TERMINAL, TYPE 1 (SPECIAL) TANGENT	EACH	4	4
63200310	GUARDRAIL REMOVAL	FOOT	254	254
67100100	MOBILIZATION	L SUM	1	1

*= SPECIALTY ITEM

Model: Default
File Name: P:\gis\com\dot\illinois.gov\PIV\DOT\Documents\DOT_Offices\District_3\project\03366121\030000\0366121-cover.dwg

USER NAME = woodshankri	DESIGNED -	REVISED -
	DRAWN -	REVISED -
PLOT SCALE = 40.0000' / in.	CHECKED -	REVISED +
PLOT DATE = 5/3/2021	DATE -	REVISED +

**STATE OF ILLINOIS
DEPARTMENT OF TRANSPORTATION**

SUMMARY OF QUANTITIES

SCALE: SHEET 1 OF 3 SHEETS STA. TO STA.

F.A.P. RTE.	SECTION	COUNTY	TOTAL SHEETS	SHEET NO.
607	(130)CLV	KENDALL	16	3
			CONTRACT NO. 66L21	
ILLINOIS FED. AID PROJECT				

CONSTRUCTION CODE
CONTRACT MAINTENANCE
100% STATE
BOX CULVERT
0004
S.N. 047-2510

CODE NO.	ITEM	UNIT	TOTAL QUANTITY	
70100100	TRAFFIC CONTROL AND PROTECTION, STANDARD 701316	EACH	1	1
70100450	TRAFFIC CONTROL AND PROTECTION, STANDARD 701201	L SUM	1	1
70100455	TRAFFIC CONTROL AND PROTECTION, STANDARD 701206	L SUM	1	1
70100500	TRAFFIC CONTROL AND PROTECTION, STANDARD 701326	L SUM	1	1
70103815	TRAFFIC CONTROL SURVEILLANCE	CAL DA	45	45
70106500	TEMPORARY BRIDGE TRAFFIC SIGNALS	EACH	1	1
70300100	SHORT TERM PAVEMENT MARKING	FOOT	64	64
70300150	SHORT TERM PAVEMENT MARKING REMOVAL	SQ FT	5	5
* 78008210	POLYUREA PAVEMENT MARKING TYPE 1 - LINE 4"	FOOT	480	480
* 78008230	POLYUREA PAVEMENT MARKING TYPE 1 - LINE 6"	FOOT	170	170
* 78200005	GUARDRAIL REFLECTORS, TYPE A	EACH	4	4
78300202	PAVEMENT MARKING REMOVAL - WATER BLASTING	SQ FT	239	239
X0327809	LINEAR DELINEATOR PANELS, 4 INCH	EACH	4	4
X0900064	MEMBRANE WATERPROOFING SYSTEM FOR BURIED STRUCTURES	SQ YD	28	28

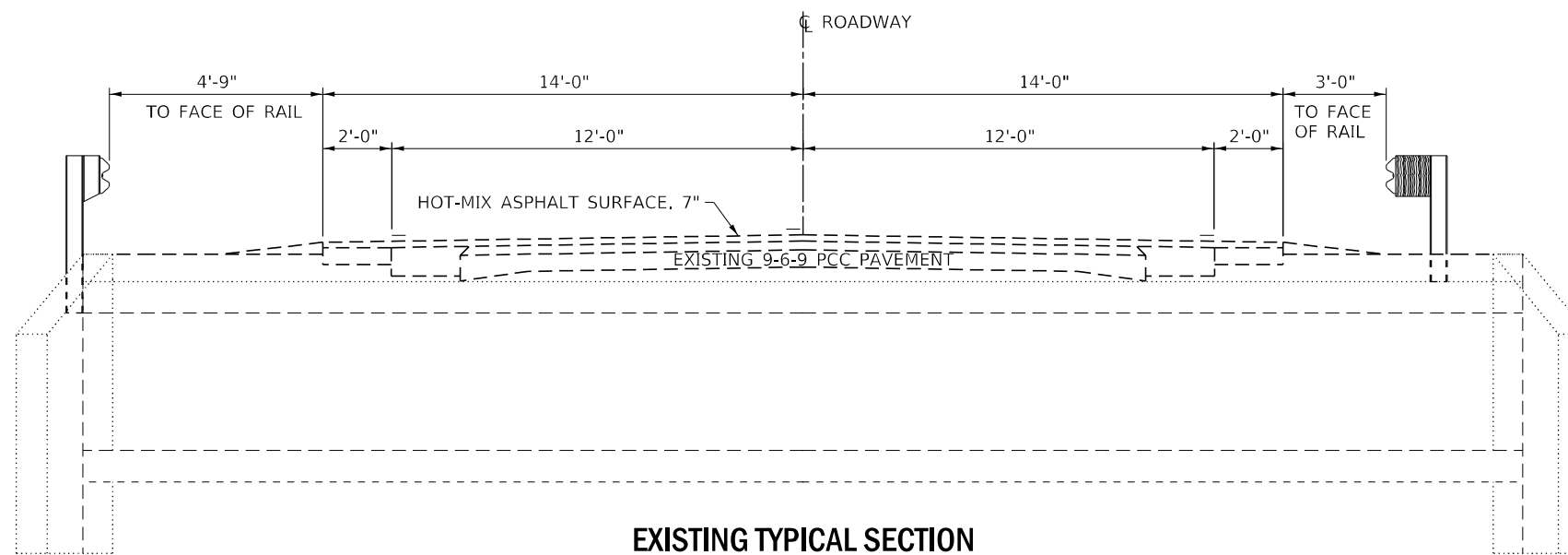
MODEL: Default
 FILE: M:\GIS\Projects\GIS\Projects\DOT\Office\District 3\project\03366121\030000\03366121-cover.dwg

USER NAME = woodshankri	DESIGNED -	REVISED -	STATE OF ILLINOIS DEPARTMENT OF TRANSPORTATION	SUMMARY OF QUANTITIES		F.A.P. RTE.	SECTION	COUNTY	TOTAL SHEETS	SHEET NO.	
PLOT SCALE = 40.0000' / in.	DRAWN -	REVISED -				607	(130)CLV	KENDALL	16	4	
PLOT DATE = 5/3/2021	CHECKED -	REVISED +		SCALE:	SHEET 2 OF 3 SHEETS	STA.	TO STA.	CONTRACT NO. 66L21			
DATE -	REVISED +			ILLINOIS FED. AID PROJECT							

CODE NO.	ITEM	UNIT	TOTAL QUANTITY	CONSTRUCTION CODE	
				CONTRACT MAINTENANCE	100% STATE
				BOX CULVERT	
				0004	
				S.N. 047-2510	
Z0005305	BOX CULVERTS TO BE CLEANED	FOOT	28		28
Z0030850	TEMPORARY INFORMATION SIGNING	SQ FT	42		42

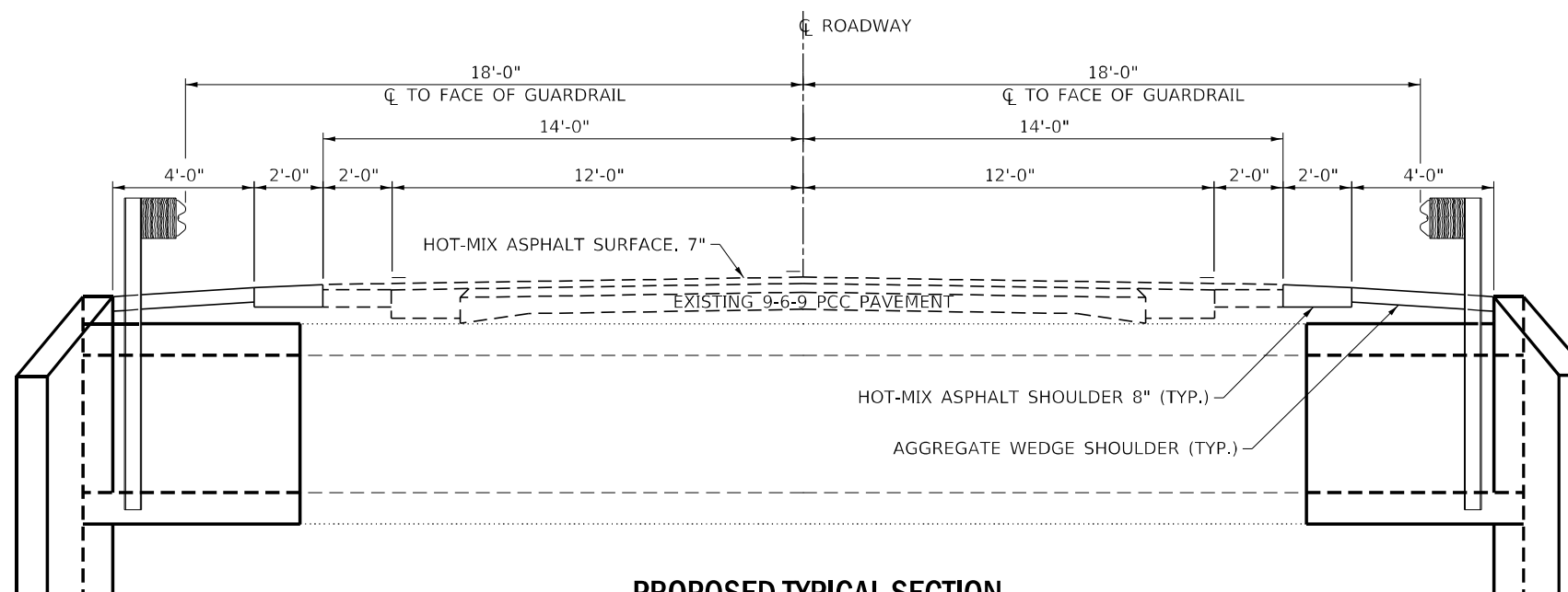
MODEL: D:\draft
 FILE NAME: p:\p1\p1\com\dot\illinois.gov\PI\DOT\Documents\DOT Offices\District 3\projects\66L21\CAD\66L21-cover.dwg

USER NAME = woodshankri	DESIGNED -	REVISED -	STATE OF ILLINOIS DEPARTMENT OF TRANSPORTATION	SUMMARY OF QUANTITIES		F.A.P. RTE.	SECTION	COUNTY	TOTAL SHEETS	SHEET NO.
PLOT SCALE = 40.0000' / in.	DRAWN -	REVISED -				607	(130)CLV	KENDALL	16	5
PLOT DATE = 5/3/2021	CHECKED -	REVISED +		SCALE: SHEET 3 OF 3 SHEETS STA. TO STA.		CONTRACT NO. 66L21				
DATE -	REVISED +			ILLINOIS FED. AID PROJECT						



EXISTING TYPICAL SECTION

STRUCTURE NO. 047-2510
 STA. 398+51
 LOOKING EAST



PROPOSED TYPICAL SECTION

STRUCTURE NO. 047-2510
 STA. 398+51
 LOOKING EAST

MODEL: Default
 FILE NAME: p:\pub\harronm.dwt\illinois.gov\PIWDOT\Documents\DOT_Offices\District 3\Projects\0366L21\CADD\0366L21-cover.dgn

USER NAME = woodshank1	DESIGNED -	REVISED -
	DRAWN -	REVISED -
PLOT SCALE = 40,0000 * / in.	CHECKED -	REVISED -
PLOT DATE = 5/3/2021	DATE -	REVISED -

**STATE OF ILLINOIS
 DEPARTMENT OF TRANSPORTATION**

TYPICAL SECTIONS

SCALE: SHEET 1 OF 1 SHEETS STA. TO STA.

F.A.P. RTE.	SECTION	COUNTY	TOTAL SHEETS	SHEET NO.
607	(130)CLV	KENDALL	16	6
CONTRACT NO. 66L21				
ILLINOIS FED. AID PROJECT				

SCHEDULE - PAVEMENT MARKING

LOCATION	PAVEMENT MARKING REMOVAL WATER BLASTING	SHORT - TERM PAVEMENT MARKING	SHORT - TERM PAVEMENT MARKING REMOVAL	POLYUREA PAVEMENT MARKING LINE 4"	POLYUREA PAVEMENT MARKING LINE 6"
	SQ FT	FOOT	SQ FT	FOOT	FOOT
STAGE I	160				
STAGE II	79	64	5	480	170
TOTAL	239	64	5	480	170

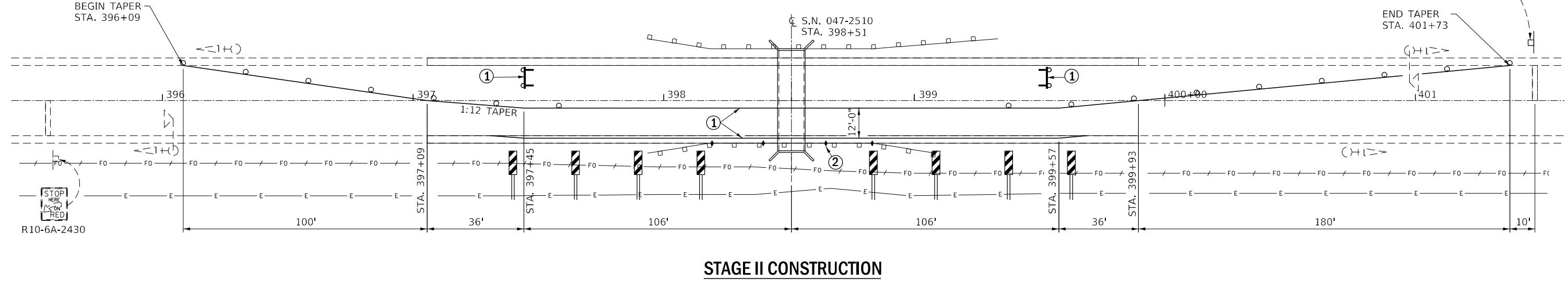
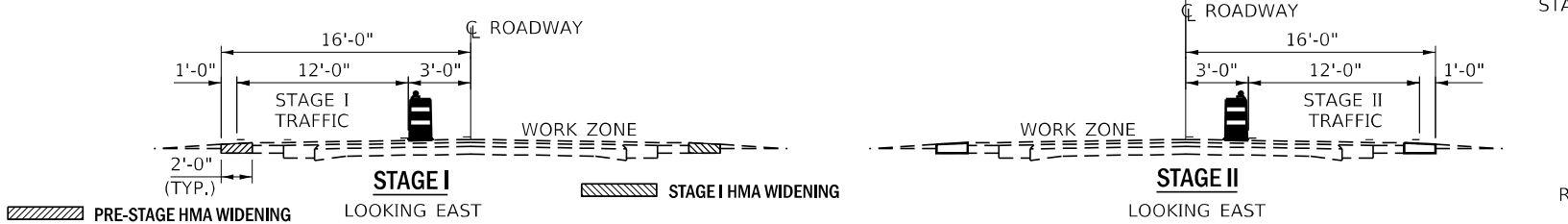
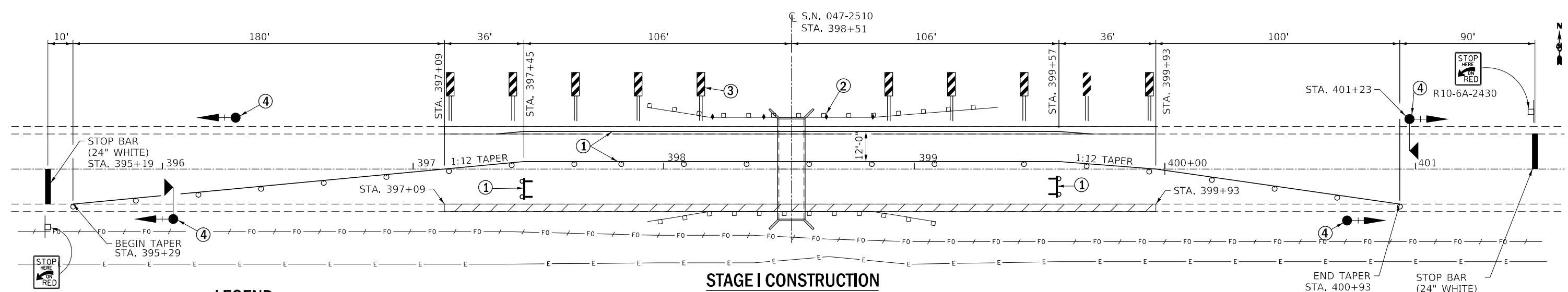
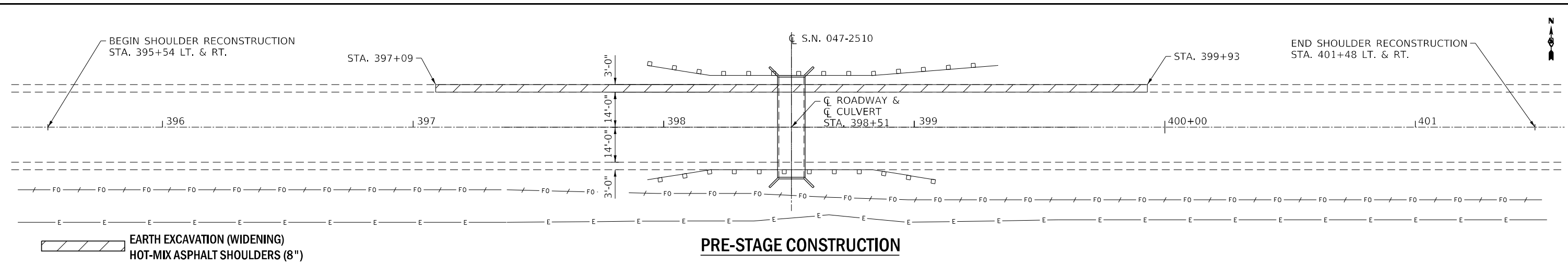
SCHEDULE - GUARDRAIL

LOCATION	GUARDRAIL REMOVAL	STEEL PLATE BEAM GUARDRAIL TYPE A 6' POSTS	LONG - SPAN GUARDRAIL OVER CULVER 12' - 6" SPAN	TRAFFIC BARRIER TERMINAL TYPE 1 (SPECIAL) TANGENT	GUARDRAIL REFLECTORS, TYPE A	LINEAR DELINEATOR PANELS 4 INCH
	FOOT	FOOT	FOOT	EACH	EACH	EACH
STAGE I	114	50	37.5	2	2	2
STAGE II	140	50	37.5	2	2	2
TOTAL	254	100	75	4	4	4

SCHEDULE - SHOULDERS

LOCATION	EARTH EXCAVATION (WIDENING)	HOT - MIX ASPHALT SHOULDERS 8"	AGGREGATE SHOULDERS TYPE B
	CU YD	SQ YD	TON
STAGE I	14	63	3
STAGE II	14	63	3
TOTAL	28	126	6

MODEL: Default
 FILE NAME: \\paulhammon.dot.illinois.gov\PIWDOT\Documents\DOT_Offices\District 3\Projects\0366L21\0366L21-cover.dgn



NOTE: SEE TRAFFIC CONTROL AND PROTECTION, STANDARD 701316 FOR DETAILS NOT SHOWN

MODEL: Default
 FILE NAME: p:\m\hammon.dwg
 PROJECT: \P\DOT\Documents\DOT - Office\Drawings\3\Projects\036621\CAD\036621\cover.dwg

USER NAME = woodshank1	DESIGNED -	REVISED -
DRAWN -	REVISOR -	REVISOR -
PLOT SCALE = 40,0000 */ in.	CHECKED -	REVISOR -
PLOT DATE = 5/3/2021	DATE -	REVISOR -

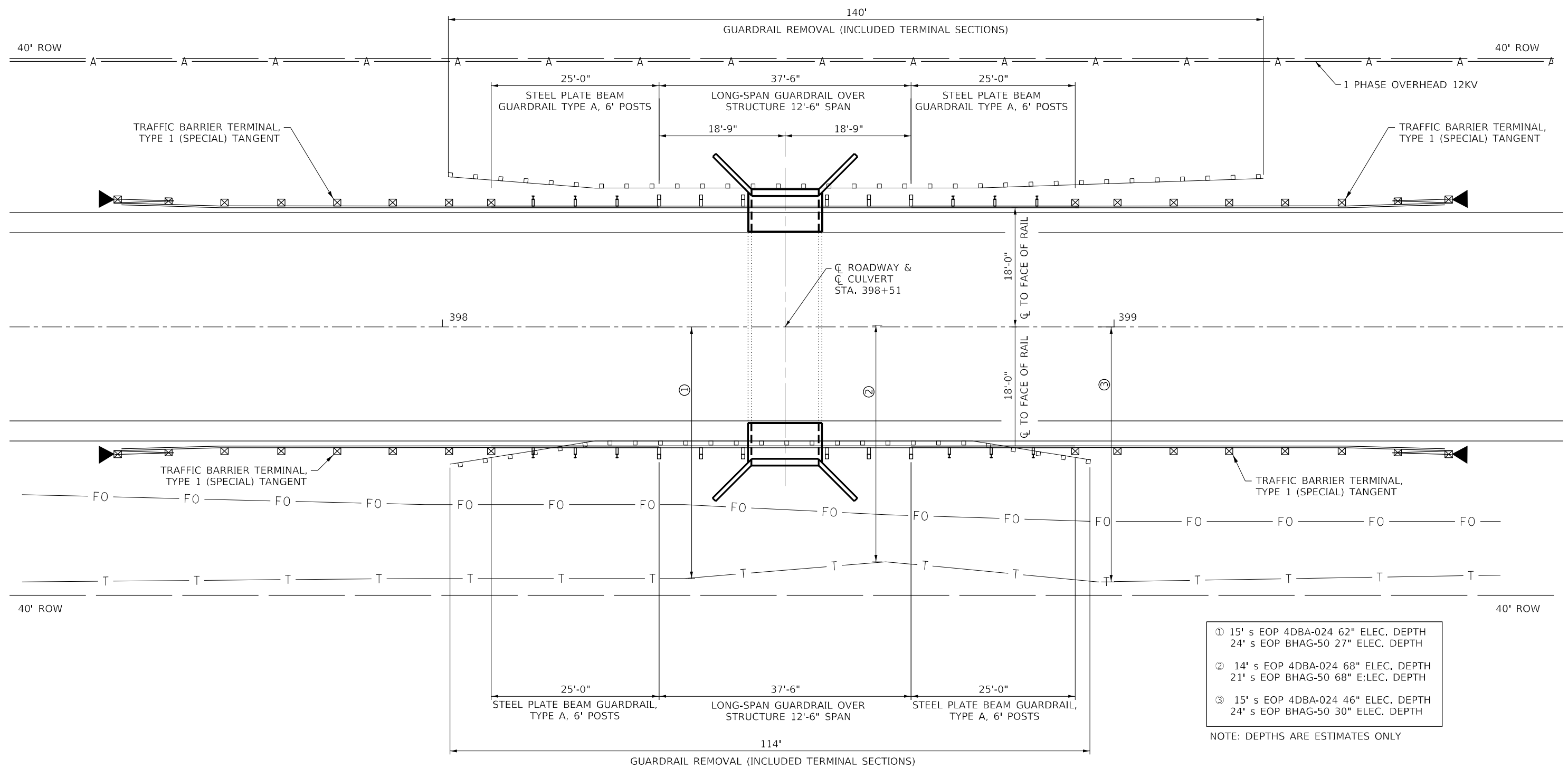
**STATE OF ILLINOIS
DEPARTMENT OF TRANSPORTATION**

TRAFFIC CONTROL STAGING DETAILS		
SCALE:	SHEET 1 OF 1 SHEETS	STA. 395+54 TO STA. 401+83

F.A.P. RTE. 607	SECTION (130)CLV	COUNTY KENDALL	TOTAL SHEETS 16	SHEET NO. 8
CONTRACT NO. 66L21				
ILLINOIS FED. AID PROJECT				

DE-ENERGIZING COM-ED'S DISTRIBUTION LINES
 (≤34,000 VOLTS) OR TRANSMISSION LINES
 (≤34,000 VOLTS) MAY BE NECESSARY IN ORDER
 TO ACCOMMODATE CONTRACTOR'S EQUIPMENT.
 COSTS MAY BE INVOLVED.

CALL 1 (800) EDISON 1



MODEL: Default
 FILE NAME: \\pwwd01\dot\Documents\DOT - Office\Drawings\3\Projects\0366L21\CADD\0366L21-cover.dwg
 PROJECT: 0366L21-Cover.dwg

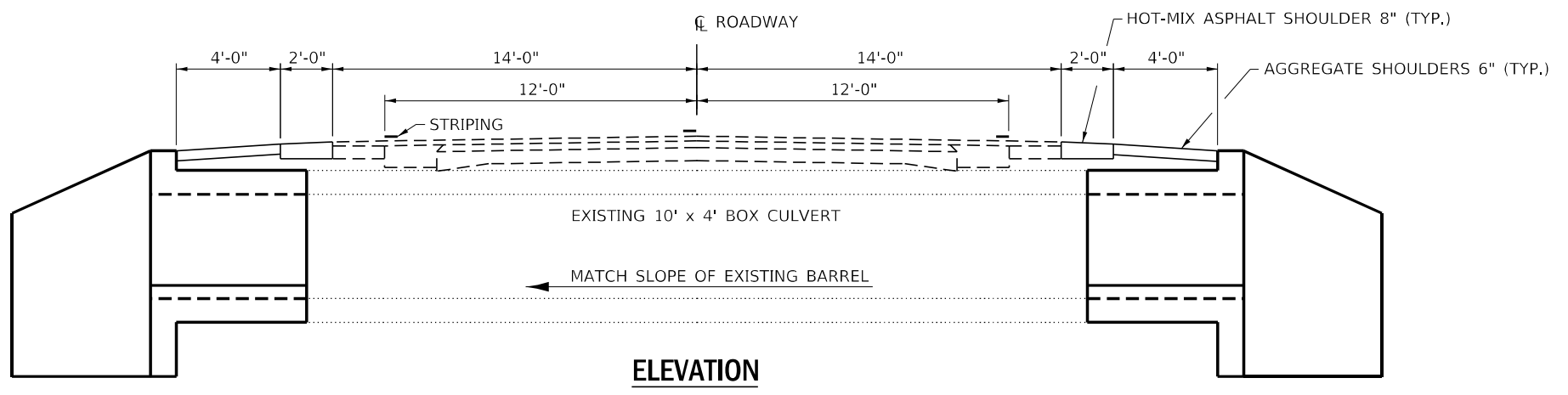
USER NAME = woodshank1	DESIGNED -	REVISED -
	DRAWN -	REVISED -
PLOT SCALE = 40,0000 * / in.	CHECKED -	REVISED -
PLOT DATE = 5/3/2021	DATE -	REVISED -

**STATE OF ILLINOIS
 DEPARTMENT OF TRANSPORTATION**

STEEL PLATE BEAM GUARDRAIL			
SCALE:	SHEET 1 OF 1 SHEETS	STA. 395+54 TO STA. 401+83	

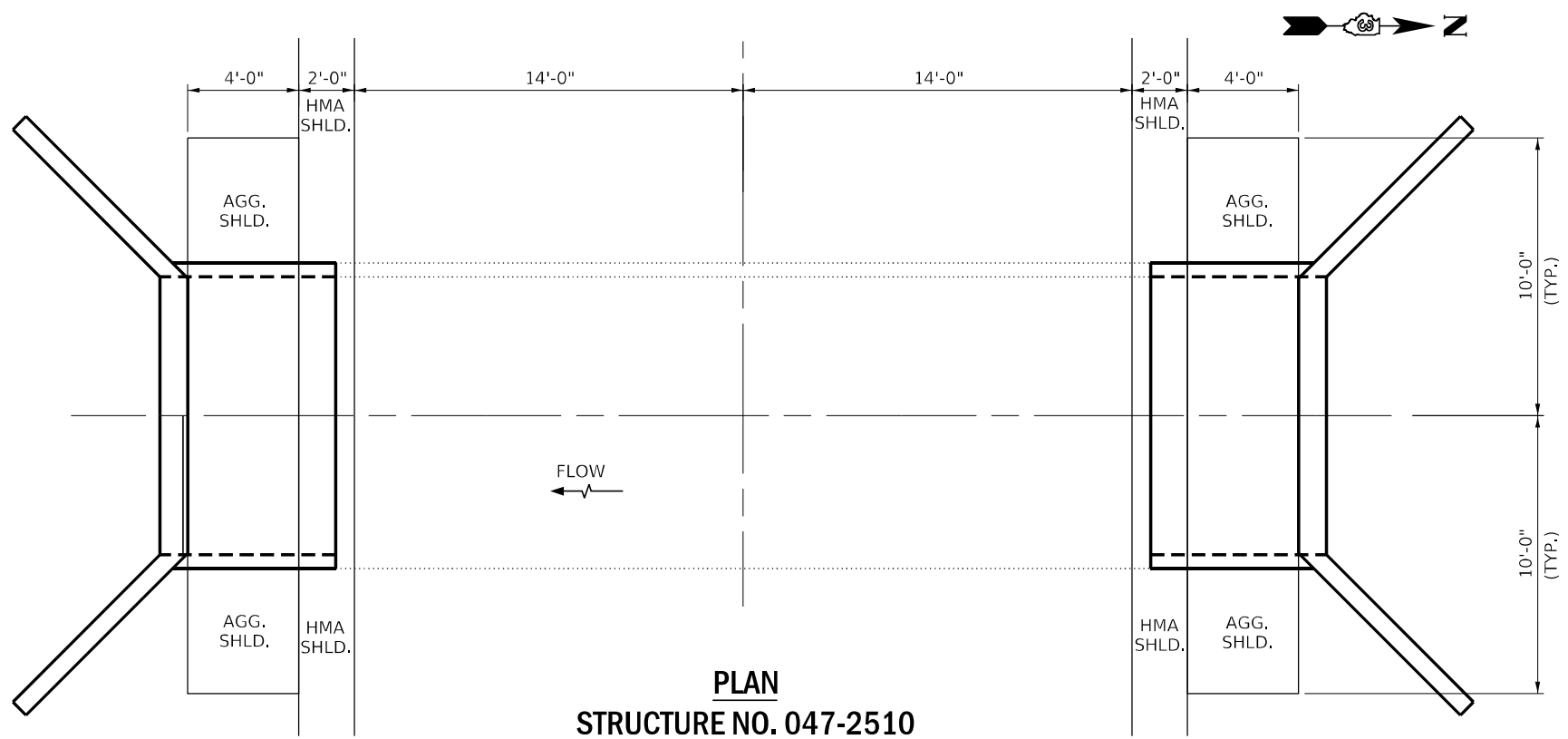
F.A.P. RTE.	SECTION	COUNTY	TOTAL SHEETS	SHEET NO.
607	(130)CLV	KENDALL	16	9
CONTRACT NO. 66L21				
ILLINOIS FED. AID PROJECT				

40' ROW



ELEVATION

40' ROW



PLAN
STRUCTURE NO. 047-2510

GENERAL NOTES

PLAN DIMENSIONS AND DETAILS RELATIVE TO EXISTING PLANS ARE SUBJECT TO NOMINAL CONSTRUCTION VARIATIONS. THE CONTRACTOR SHALL FIELD VERIFY EXISTING DIMENSIONS AND DETAILS AFFECTING NEW CONSTRUCTION AND MAKE NECESSARY APPROVED ADJUSTMENTS PRIOR TO CONSTRUCTION OR ORDERING OF MATERIALS. SUCH VARIATIONS SHALL NOT BE CAUSE FOR ADDITIONAL COMPENSATION FOR A CHANGE IN SCOPE OF WORK; HOWEVER, THE CONTRACTOR WILL BE PAID FOR THE QUANTITY ACTUALLY FURNISHED AT THE UNIT PRICE BID FOR THE WORK.

REINFORCEMENT BARS DESIGNATED (E) SHALL BE EPOXY COATED.



Expires 11-30-2022

06/28/2021

TOTAL BILL OF MATERIAL

ITEM	UNIT	SUPER	SUB	TOTAL
CONCRETE REMOVAL	CU. YD.		15	15
CONCRETE BOX CULVERTS	CU. YD.		17.4	17.4
EXPANSION BOLTS 3/4" X 18"	EACH		48	48
REINFORCEMENT BARS EPOXY COATED	POUND		3200	3200
MEMBRANE WATERPROOFING FOR BURIED STRUCTURES	SQ. YD.		28	28
TEMPORARY SOIL RETENTION SYSTEM	SQ. FT.		826	826
CULVERT TO BE CLEANED	FEET		28	28

MODEL: Default
FILE NAME: \\p010000000000\dot\illinois\gov\PI\DOT\Documents\DOT Office\Drawings\Projects\036621\CLV\047-2510-CLV.dgn

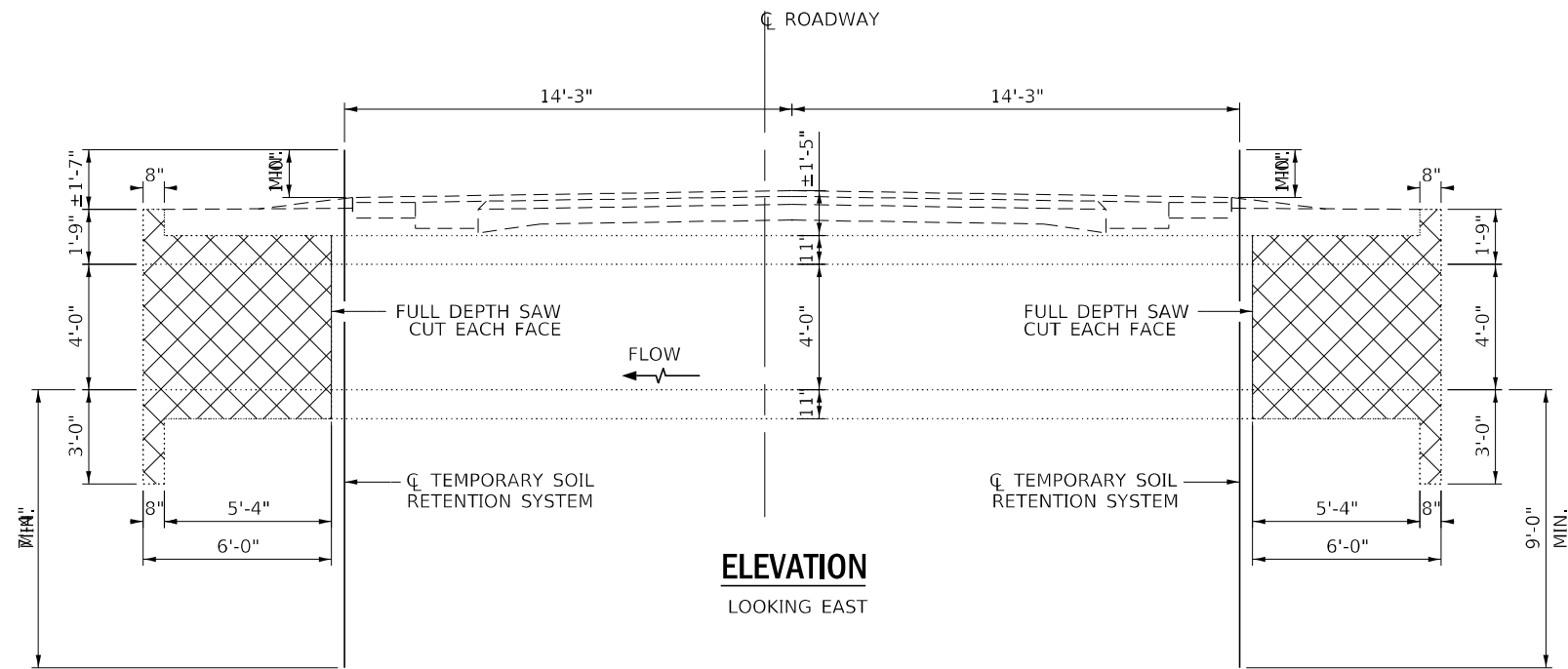
USER NAME = woodshank1	DESIGNED -	REVISED -
	DRAWN -	REVISED -
PLOT SCALE = 40,0000 * / in.	CHECKED -	REVISED -
PLOT DATE = 5/3/2021	DATE -	REVISED -

STATE OF ILLINOIS
DEPARTMENT OF TRANSPORTATION

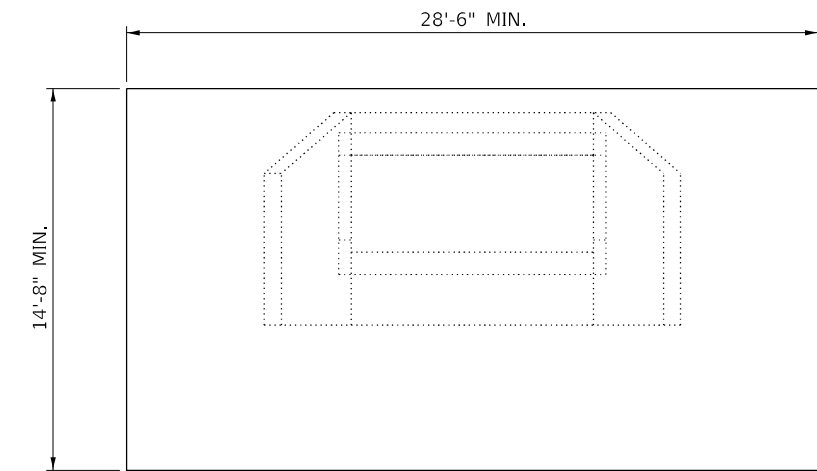
GENERAL PLAN AND ELEVATION
FOR STRUCTURE NO. 047-2510

SCALE: SHEET 1 OF 1 SHEETS STA. 398+51

F.A.P. RTE.	SECTION	COUNTY	TOTAL SHEETS	SHEET NO.
607	(130)CLV	KENDALL	16	10
			CONTRACT NO. 66L21	
ILLINOIS FED. AID PROJECT				

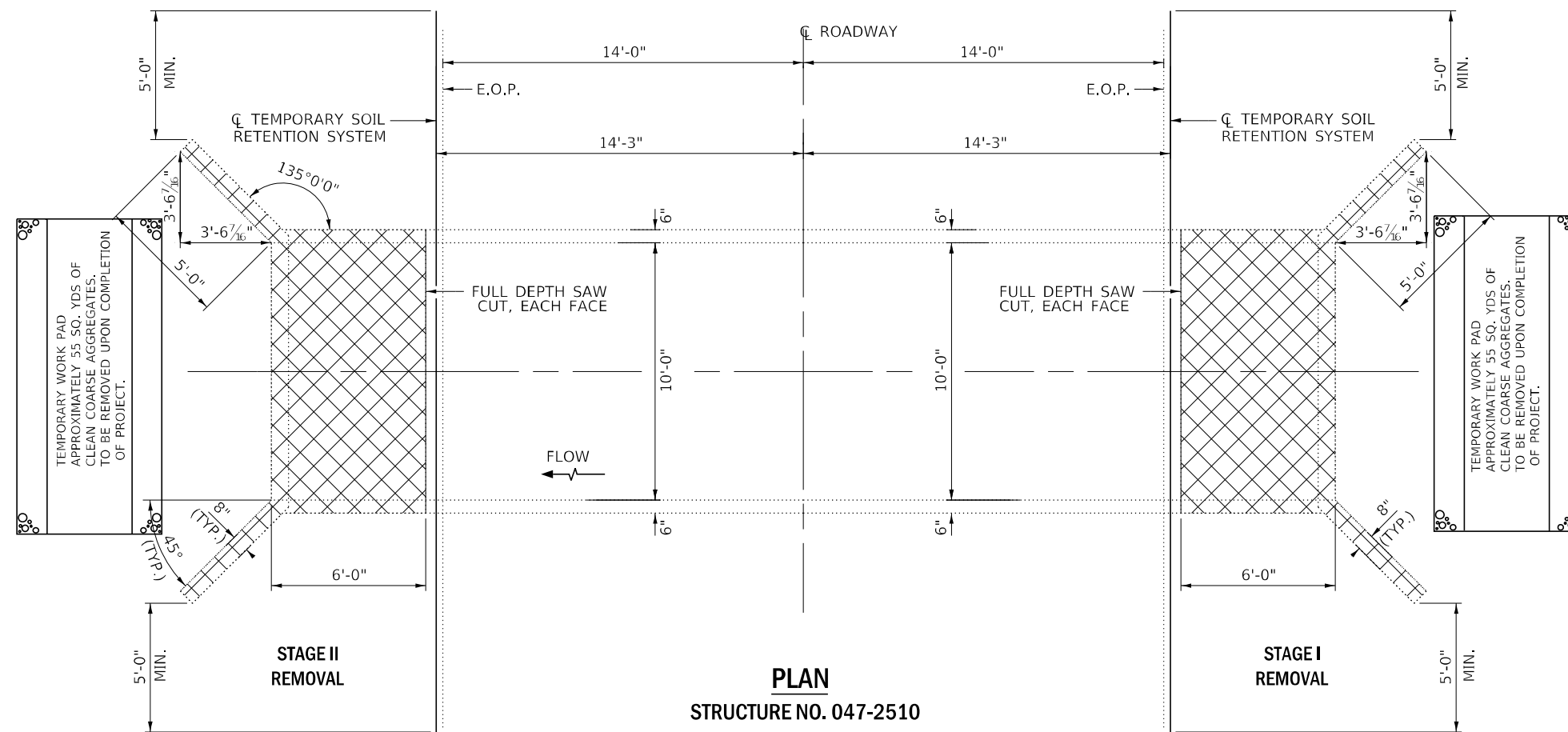


ELEVATION
LOOKING EAST



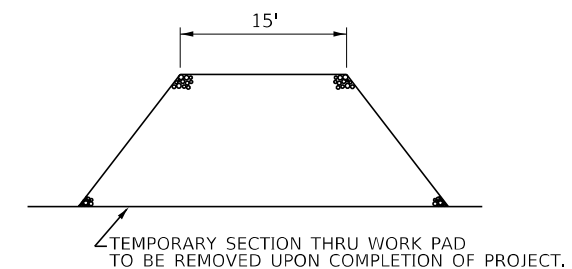
TEMPORARY SOIL RETENTION SYSTEM

NOTE:
EXCAVATION NECESSARY FOR THE REMOVAL OF THE CONCRETE BOX CULVERT SHALL NOT BE PAID FOR SEPARATELY BUT SHALL BE INCLUDED IN THE COST OF THE "CONCRETE REMOVAL" WORK.



PLAN
STRUCTURE NO. 047-2510

NOTE:
TEMPORARY WORK PADS ARE "OPTIONAL". SHOULD THE CONTRACTOR DEVIATE FROM THE GUIDELINES CURRENTLY IMPOSED UNDER THE PERMIT, THEN, FULL DESIGN DETAILS INCLUDING LOCATION, MATERIAL SPECIFICATIONS AND HYDRAULIC ANALYSIS SHOULD BE INCLUDED IN A REQUEST TO THE ILLINOIS DEPARTMENT OF TRANSPORTATION, ATTN: BRIDGE AND HYDRAULICS UNIT, 700 E. NORRIS DR., OTTAWA IL 61350



MODEL: Default
 FILE NAME: p:\pub\baronon.dwg
 PROJECT: 036621\ICADD\036621\036621-conv.dwg
 OFFICE: DISTRICT 3

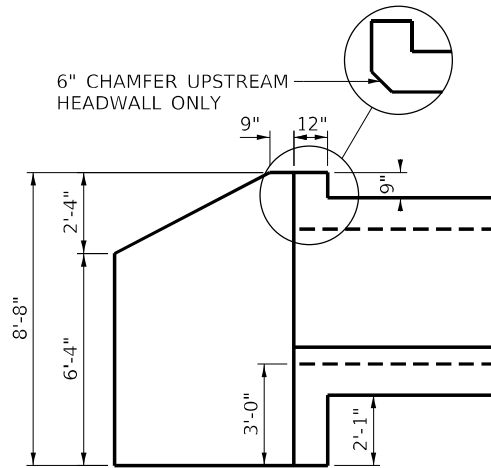
USER NAME = woodshank1	DESIGNED -	REVISED -
	DRAWN -	REVISED -
PLOT SCALE = 40,0000 */ in.	CHECKED -	REVISED -
PLOT DATE = 5/3/2021	DATE -	REVISED -

STATE OF ILLINOIS
DEPARTMENT OF TRANSPORTATION

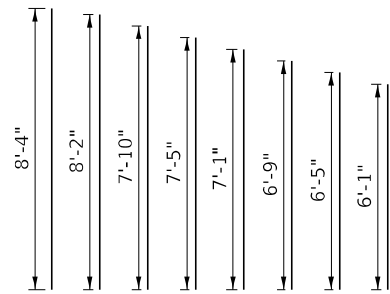
REMOVAL DETAILS		
FOR STRUCTURE NO. 047-2510		
SCALE:	SHEET 1 OF 1 SHEETS	STA. 398+51

F.A.P. RTE.	SECTION	COUNTY	TOTAL SHEETS	SHEET NO.
607	(130)CLV	KENDALL	16	11
CONTRACT NO. 66L21				
ILLINOIS FED. AID PROJECT				

NOTE: UNLESS OTHERWISE NOTED, ALL REINFORCEMENT SHALL HAVE A MINIMUM OF 2" CLEARANCE FROM FACE OF CONCRETE.



SHOWING DIMENSIONS



v₁(E) BAR CUTTING DETAIL
ORDER FULL LENGTH AND CUT TO FIT IN FIELD

11 - #4 v(E) BARS @ 5 1/2" CTS. (I.F.) (E.F.)
1 - #4 v(E) BAR (O.F.) (E.F.)

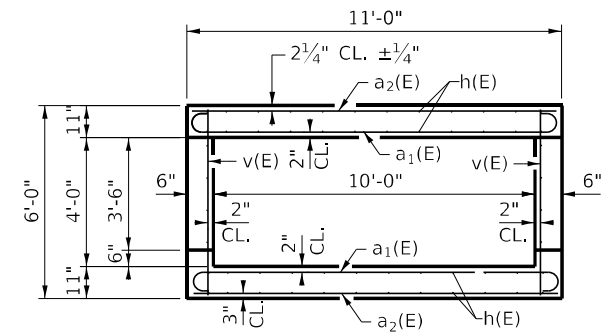
ROADWAY

FLOW

MEMBRANE WATERPROOFING
(FOR BURIED STRUCTURES
TOP AND SIDES OF BARREL
AT BOTH ENDS)

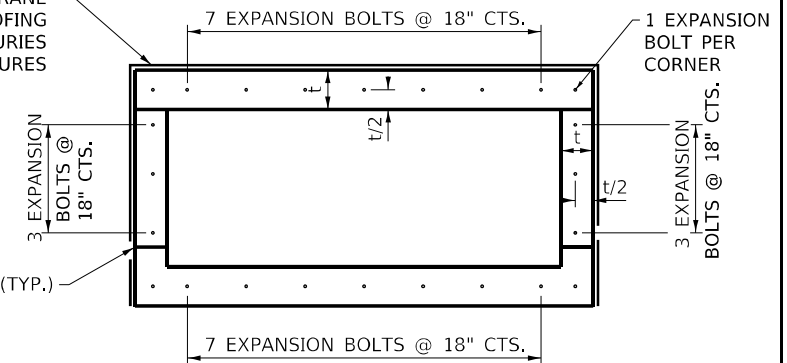
NOTE:
(I.F.) = INSIDE FACE
(O.F.) = OUTSIDE FACE
(E.F.) = EACH FACE

SHOWING REINFORCEMENT



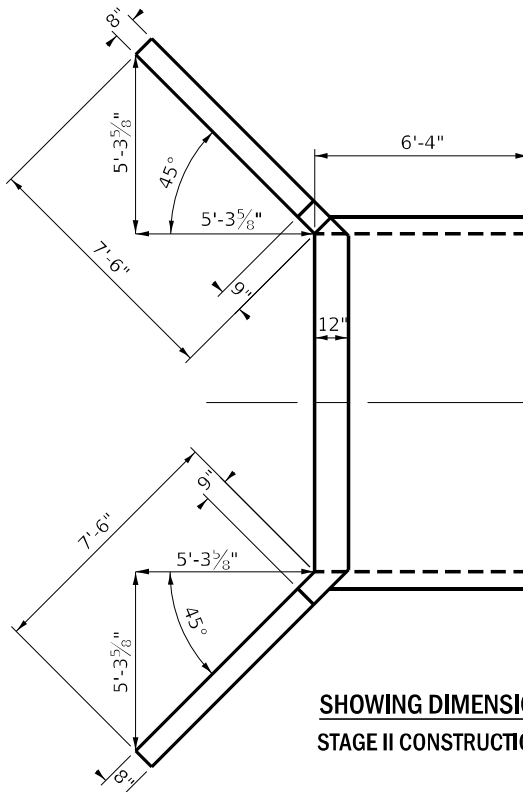
SECTION THRU BARREL

MEMBRANE WATERPROOFING
FOR BURIED
STRUCTURES



SECTION THRU BARREL

EXPANSION BOLTS SHALL BE 3/4" Ø X 18" HOOKED BOLTS.
HOOKED BOLTS SHALL EXTEND A MINIMUM OF 9" INTO NEW CONCRETE.



SHOWING DIMENSIONS
STAGE II CONSTRUCTION

MEMBRANE WATERPROOFING
(FOR BURIED STRUCTURES
TOP AND SIDES OF BARREL
AT BOTH ENDS)

ROADWAY

FLOW

11 - #6 h₂(E) BARS @ 12" CTS.
TOP & BOTTOM OF TOP SLAB
TOP & BOTTOM OF BOTTOM SLAB

10 - #7 a₁(E) BARS @ 7" CTS.
BOTTOM OF TOP SLAB
6 - #6 a₂(E) BARS @ 12" CTS.
TOP OF TOP SLAB

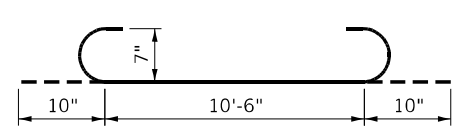
10 - #7 a₁(E) BARS @ 7" CTS.
TOP OF BOTTOM SLAB
6 - #6 a₂(E) BARS @ 12" CTS.
BOTTOM OF BOTTOM SLAB

PLAN

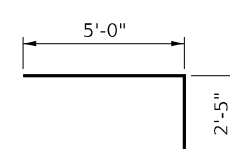
STRUCTURE NO. 047-2510

SHOWING REINFORCEMENT
STAGE I CONSTRUCTION

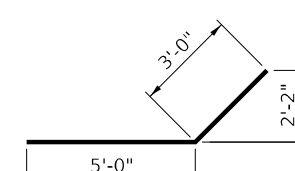
3/4" Ø HOOKED ANCHOR BOLTS (TYP.)



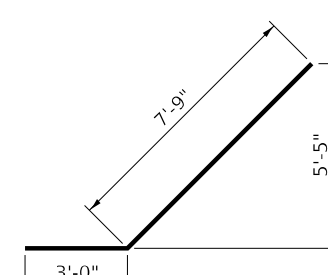
a₁(E)



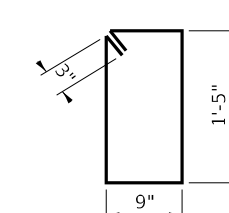
d(E)



h₄(E)



h₅(E)



s(E)

BILL OF MATERIALS
FOR ONE END

BAR	NO.	SIZE	LENGTH	SHAPE
a ₁ (E)	20	#7	12' - 2"	
a ₂ (E)	12	#6	10' - 6"	
d(E)	10	#5	7' - 5"	
h(E)	5	#6	9' - 11"	
h ₁ (E)	2	#7	9' - 11"	
h ₂ (E)	44	#6	6' - 0"	
h ₃ (E)	8	#4	6' - 0"	
h ₄ (E)	7	#4	8' - 0"	
h ₅ (E)	7	#4	8' - 5"	
s(E)	10	#4	5' - 0"	
v(E)	24	#4	5' - 8"	
v ₁ (E)	20	#4	8' - 5"	
CONCRETE REMOVAL			CU. YD.	7.5
CONCRETE BOX CULVERTS			CU. YD.	8.7
3/4" DIA. EXPANSION BOLTS			EACH	24
REINFORCEMENT BARS			POUND	1600
EPOXY COATED				
MEMBRANE WATERPROOFING FOR BURIED STRUCTURES			SQ. YD.	14
TEMPORARY SOIL RETENTION SYSTEM			SQ. FT.	413

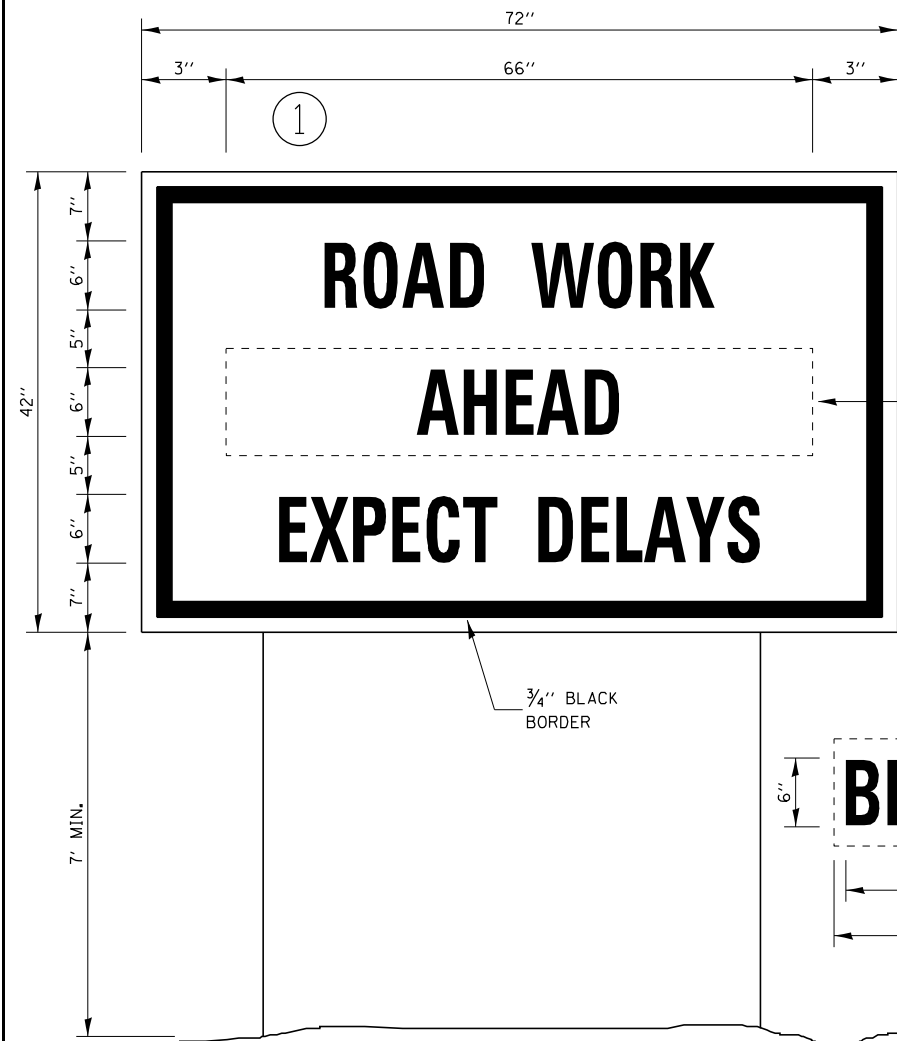
STATE OF ILLINOIS
DEPARTMENT OF TRANSPORTATION

CONSTRUCTION DETAILS
FOR STRUCTURE NO. 047-2510

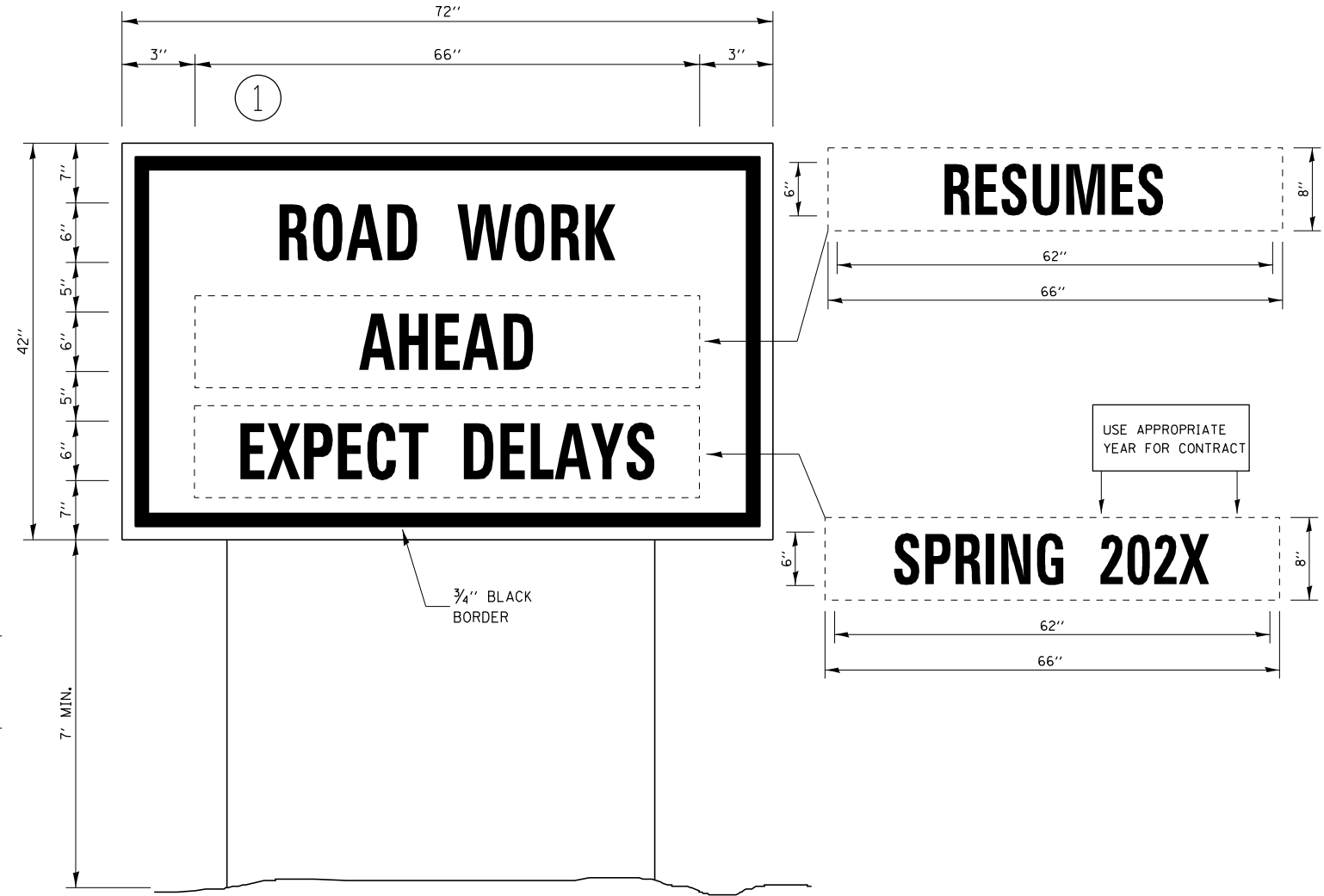
SCALE: SHEET 1 OF 1 SHEETS STA. 398+51

F.A.P. RTE.	SECTION	COUNTY	TOTAL SHEETS	SHEET NO.
607	(130)CLV	KENDALL	16	12
CONTRACT NO. 66L21				
ILLINOIS FED. AID PROJECT				

MODEL: Default
FILE NAME: \\p01\share\p01\p01\DOT\Documents\DOT - Office\Drawings\3\Projects\0386621\0386621-01\cover.dgn



TEMPORARY INFORMATION SIGNING



WINTER SHUT DOWN SIGNING

NOTES:

1. USE 6" D BLACK LETTERING ON FLOURESENT ORANGE BACKGROUND.
2. ERECT SIGNS AT LOCATIONS IN ADVANCE OF THE "ROAD CONSTRUCTION AHEAD" SIGNS AS DIRECTED BY THE ENGINEER.
3. ERECT SIGN ① WITH INSTALLED PANEL ② A MINIMUM OF ONE WEEK PRIOR TO THE START OF THE LANE CLOSURE.
4. REMOVE PANEL ② ON THAT DATE.
5. SEE SPECIAL PROVISION "TEMPORARY INFORMATION SIGNING" FOR ADDITIONAL INFORMATION.
6. WILL BE PAID FOR PER SO FT AS "TEMPORARY INFORMATION SIGNING". EACH SIGN = 21 SO FT AND THE DATE PANEL ② WILL NOT BE MEASURED SEPARATELY FOR PAYMENT.

MODEL: Default
 FILE NAME: \\paulhammon.dot.illinois.gov\PIWDOT\Documents\DOT_Offices\District 3\Projects\0366L21\0366L21-cover.dgn

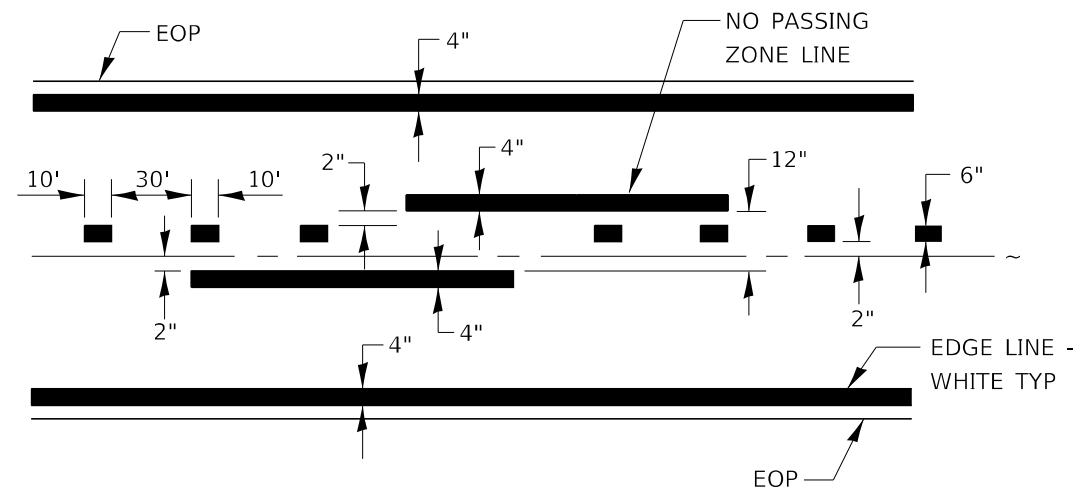
USER NAME = woodshank1	DESIGNED -	REVISED -
	DRAWN -	REVISED -
PLOT SCALE = 40,0000 */ in.	CHECKED -	REVISED -
PLOT DATE = 5/3/2021	DATE -	REVISED -

**STATE OF ILLINOIS
DEPARTMENT OF TRANSPORTATION**

TEMPORARY INFORMATION SIGNNG

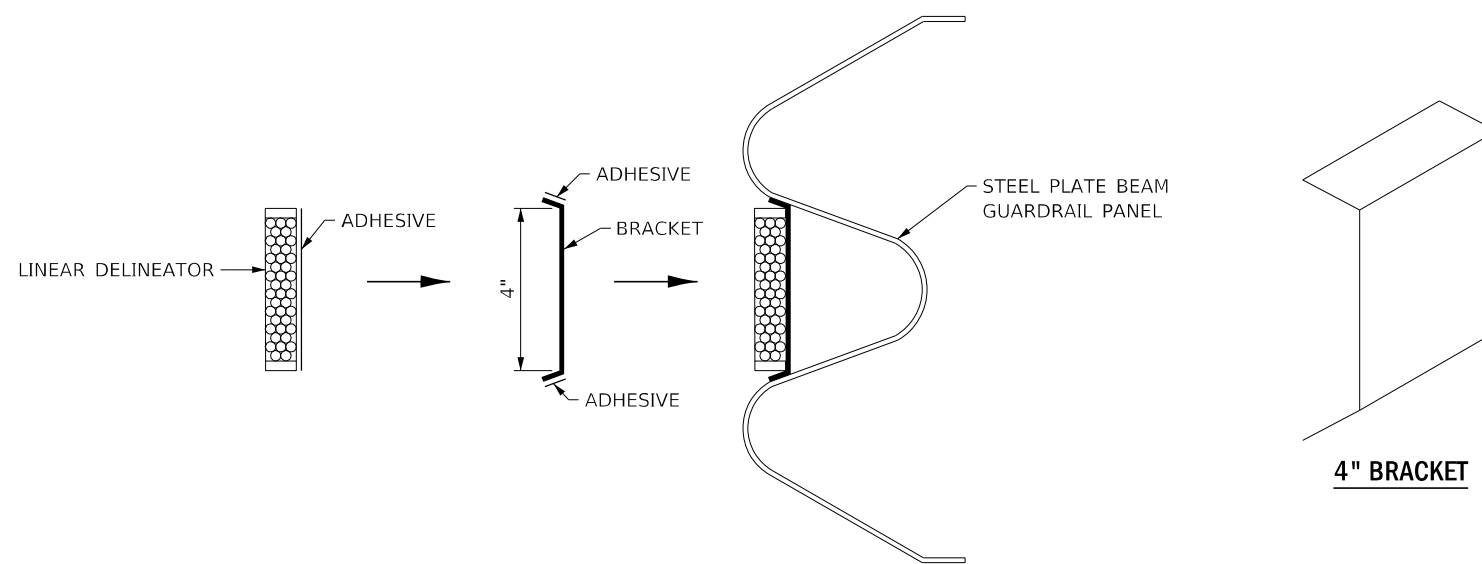
SCALE: SHEET 1 OF 1 SHEETS STA.

F.A.P. RTE.	SECTION	COUNTY	TOTAL SHEETS	SHEET NO.
607	(130)CLV	KENDALL	16	13
				CONTRACT NO. 66L21
ILLINOIS FED. AID PROJECT				



CENTERLINE & NO PASSING
ZONE LINES - YELLOW

PAVEMENT MARKING



LINEATOR DELINEATOR APPLICATION TO STANDARD GALVANIZED GUARDRAIL

LINEATOR DELINEATOR SHALL BE APPLIED ACCORDING TO THE MANUFACTURER'S RECOMMENDATIONS

MODEL: Default
FILE NAME: \\paulhammon.dot.ilinois.gov\PWDOT\Documents\DOT_Offices\District 3\Projects\0366L21\CADD\0366L21-cover.dgn

USER NAME = woodshank1	DESIGNED -	REVISED -
	DRAWN -	REVISED -
PLOT SCALE = 40,0000 * / in.	CHECKED -	REVISED -
PLOT DATE = 5/3/2021	DATE -	REVISED -

STATE OF ILLINOIS
DEPARTMENT OF TRANSPORTATION

MISCELLANEOUS DETAILS

SCALE: SHEET 1 OF 1 SHEETS STA.

F.A.P. RTE.	SECTION	COUNTY	TOTAL SHEETS	SHEET NO.
607	(130)CLV	KENDALL	16	14
CONTRACT NO. 66L21				
ILLINOIS FED. AID PROJECT				

SOIL BORING LOG

ROUTE US 52 (FAP 607) DESCRIPTION US 52 over a Stream, 7.7 miles East of IL47 LOGGED BY Larry Myers

SECTION 130 & 130-B LOCATION NW 1/4, SEC. 14, TWP. 35N, RNG. 8E,

Latitude 41.512913, Longitude -88.288567

COUNTY Kendall DRILLING METHOD Hollow Stem Auger HAMMER TYPE CME Automatic

STRUCT. NO. 047-2510
 Station 398+51

BORING NO. 1 (N.W. Quad.)
 Station 398+31
 Offset 14.0 ft LL

Ground Surface Elev. 580.41 ft

D	B	U	M
E	L	C	O
P	O	S	I
T	W	Q	S
H	S	u	T

Surface Water Elev. 525.27 ft
 Stream Bed Elev. 524.48 ft

Groundwater Elev.:
 First Encounter Dry ft
 Upon Completion Dry ft

After Hrs. ft

Augered White Shoulder Stone, Black Silty Clay Loam Fill with Concrete Debris	577.91	-	-	-	-
Stiff Black Silty Clay Loam Topsoil	575.91	3	2	2.0	34
		4	P		
Stiff Brown & Gray Silty Clay loam Till	570.91	-5	2	1.5	25
		2	P		
		2	2.0	27	
		2	P		
Hard Brown Silty Loam with Heavy Gravel Pieces	567.41	-10	6	4.0	11
		8	P		
		10	P		
Dense Gray Limestone	565.41	100/5'			3
Auger Refusal at 15' End of Boring		-15	100/1'		1

The Unconfined Compressive Strength (UCS) Failure Mode is indicated by (B-Bulge, S-Shear, P-Penetrometer)
 The SPT (N value) is the sum of the last two blow values in each sampling zone (AASHTO T206)
BBS, form 137 (Rev. 8-99)

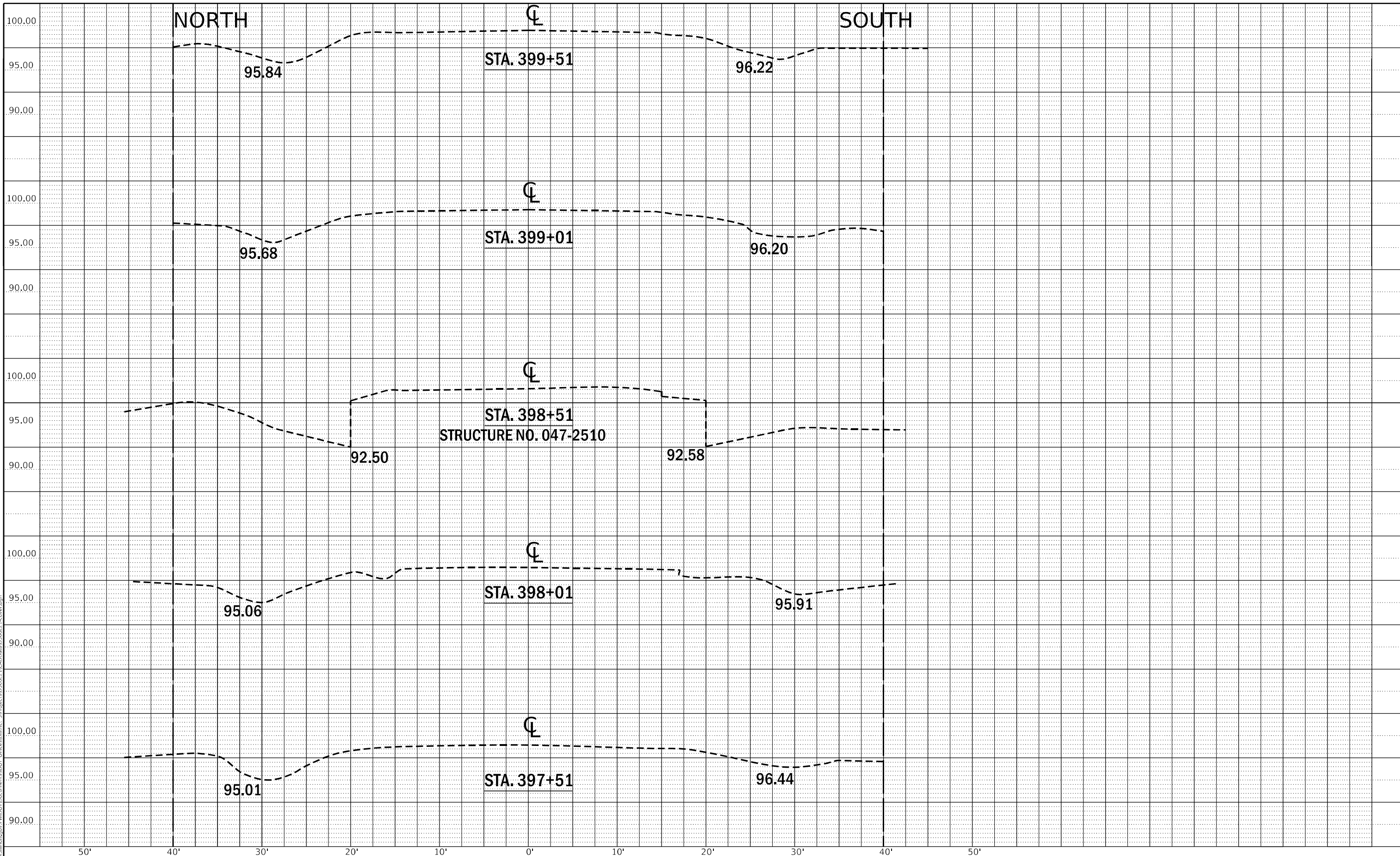
MODEL: D:\default... FILE NAME: 3\proj\dot\Documents\IDOT_Offices\District 3\projects\0336621\0300Data\036621-cover.dgn

<small>USER NAME = woodshank1</small>	<small>DESIGNED -</small>	<small>REVISED -</small>	STATE OF ILLINOIS DEPARTMENT OF TRANSPORTATION	SOIL BORINGS	<small>F.A.P. RTE. 607</small>	<small>SECTION (130)CLV</small>	<small>COUNTY KENDALL</small>	<small>TOTAL SHEETS 16</small>	<small>SHEET NO. 15</small>
<small>PLOT SCALE = 40,0000 */ in.</small>	<small>CHECKED -</small>	<small>REVISED -</small>			<small>CONTRACT NO. 66L21</small>				
<small>PLOT DATE = 5/3/2021</small>	<small>DATE -</small>	<small>REVISED -</small>			<small>SCALE: SHEET 1 OF 1 SHEETS STA.</small>		<small>ILLINOIS FED. AID PROJECT</small>		

PLAN	SURVEYED	BY	DATE
	PLOTTED		
NOTE BOOK NO.	ALIGNED		
	CHECKED		
	FILE NAME		

PROFILE	SURVEYED	BY	DATE
	PLOTTED		
NOTE BOOK NO.	GRADES CHECKED		
	STRUCTURE NOTATIONS CHECKED		
	FILE NAME		

MODEL: Default
 FILE NAME: p:\workroom\047\illinois\p\WIDOT\Documents\DOT - Offices\District 3\projects\036612\cadd\data\366121-cover.dgn



USER NAME = woodshank1	DESIGNED -	REVISED -
	DRAWN -	REVISED -
PLOT SCALE = 40,0000' / in.	CHECKED -	REVISED -
PLOT DATE = 5/3/2021	DATE -	REVISED -

**STATE OF ILLINOIS
DEPARTMENT OF TRANSPORTATION**

CROSS SECTIONS

SCALE: SHEET 1 OF 1 SHEETS STA. 397+51 TO STA. 399+51

F.A.P. RTE.	SECTION	COUNTY	TOTAL SHEETS	SHEET NO.
607	(130)CLV	KENDALL	16	16
CONTRACT NO. 66L21				
ILLINOIS FED. AID PROJECT				