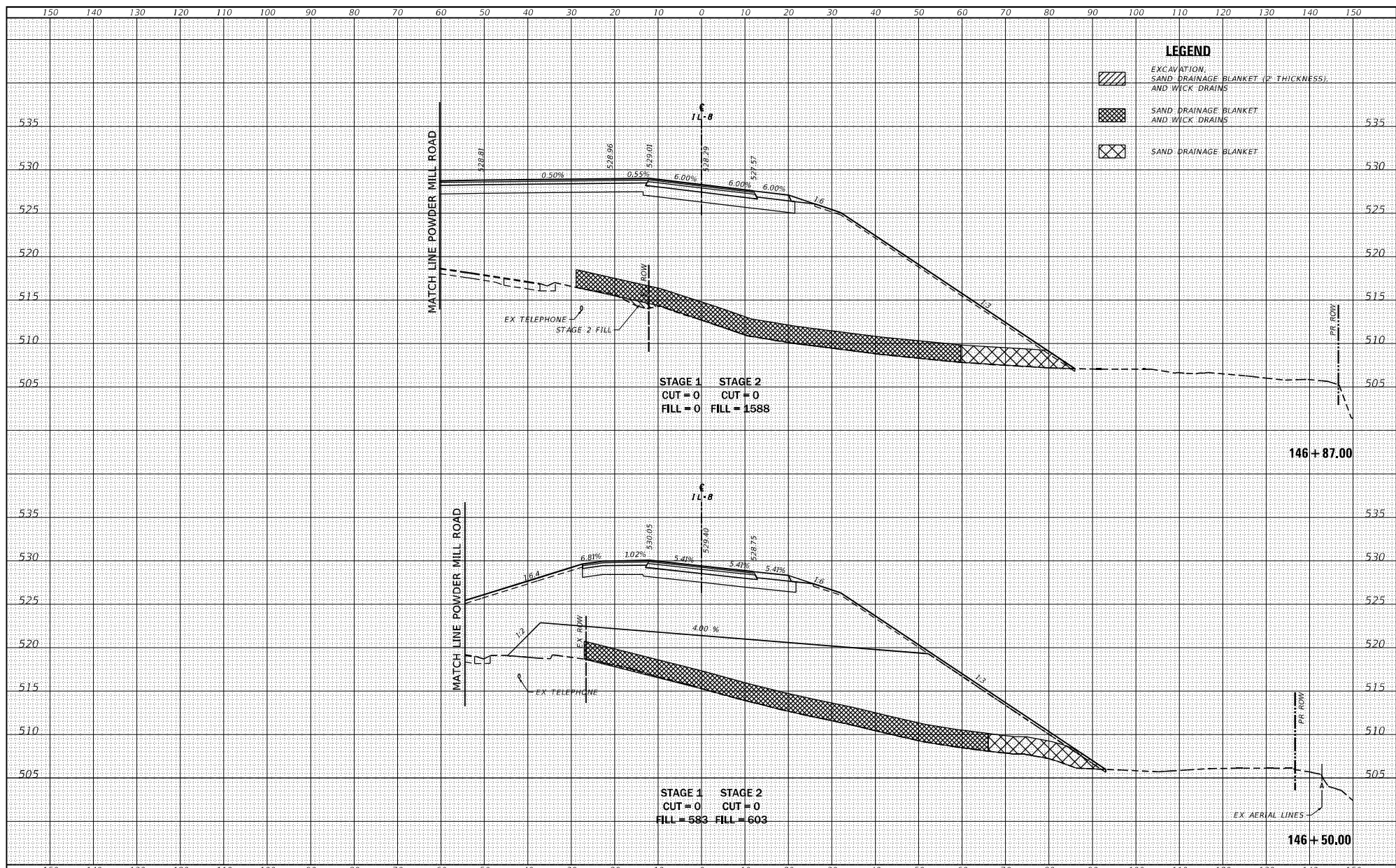


DATE	
BY	
DESIGNED	
DRAWN	
CHECKED	
DATE	
BY	
DESIGNED	
DRAWN	
CHECKED	
DATE	
BY	
DESIGNED	
DRAWN	
CHECKED	
DATE	
BY	

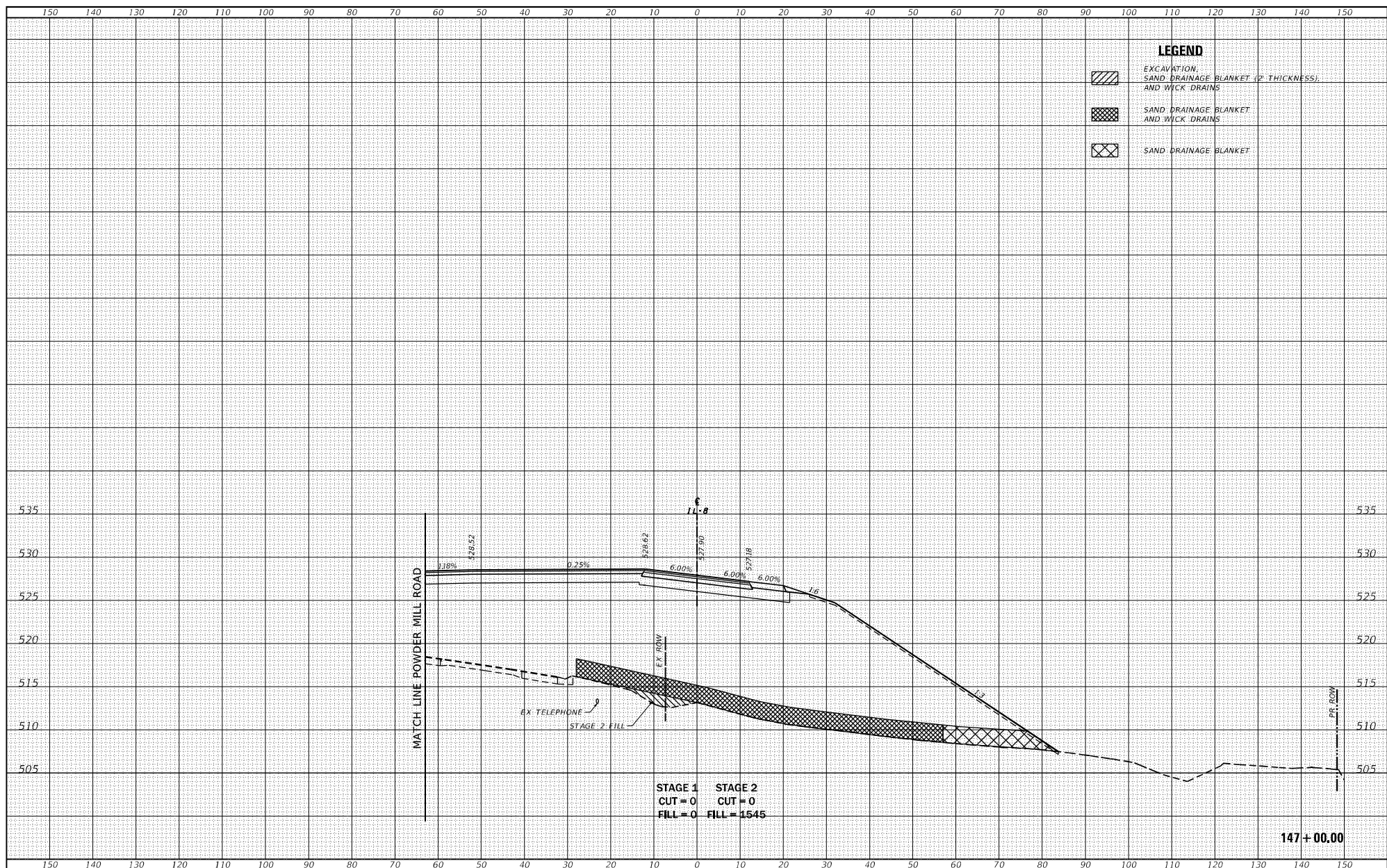
DATE	
BY	
DESIGNED	
DRAWN	
CHECKED	
DATE	
BY	
DESIGNED	
DRAWN	
CHECKED	
DATE	
BY	
DESIGNED	
DRAWN	
CHECKED	
DATE	
BY	



FILE NAME =	USER NAME = Betsy	DESIGNED = JLS	REVISIONS =	STATE OF ILLINOIS DEPARTMENT OF TRANSPORTATION	CROSS SECTIONS IL ROUTE 8		F.A.S. SITE: 1388 SECTION: (Z-1VB)BR-2 COUNTY: PEORIA TOTAL SHEETS: 235 SHEET NO.: 201 CONTRACT NO. 68799
PROJECT: S:\Projects\4409-002-4180 IL 8 over I-55 Phase III Design\CADD	Sheets\4467798\01\c18.dgn	DRAWN = LEC	REVISIONS =				
PILOT SCALE = 20.0000' / in.	CHECKED = ESW	REVISIONS =	REVISIONS =				
DATE: 8/22/2019	DATE: 01-17-18	REVISIONS =	REVISIONS =	SCALE: 1"=20'	SHEET 39 OF 58 SHEETS	STA. 146+50.00 TO STA. 146+87.00	ILLINOIS FED. AID PROJECT

DATE	
BY	
REVISION	
DATE	
BY	
REVISION	
DATE	
BY	
REVISION	
DATE	
BY	
REVISION	

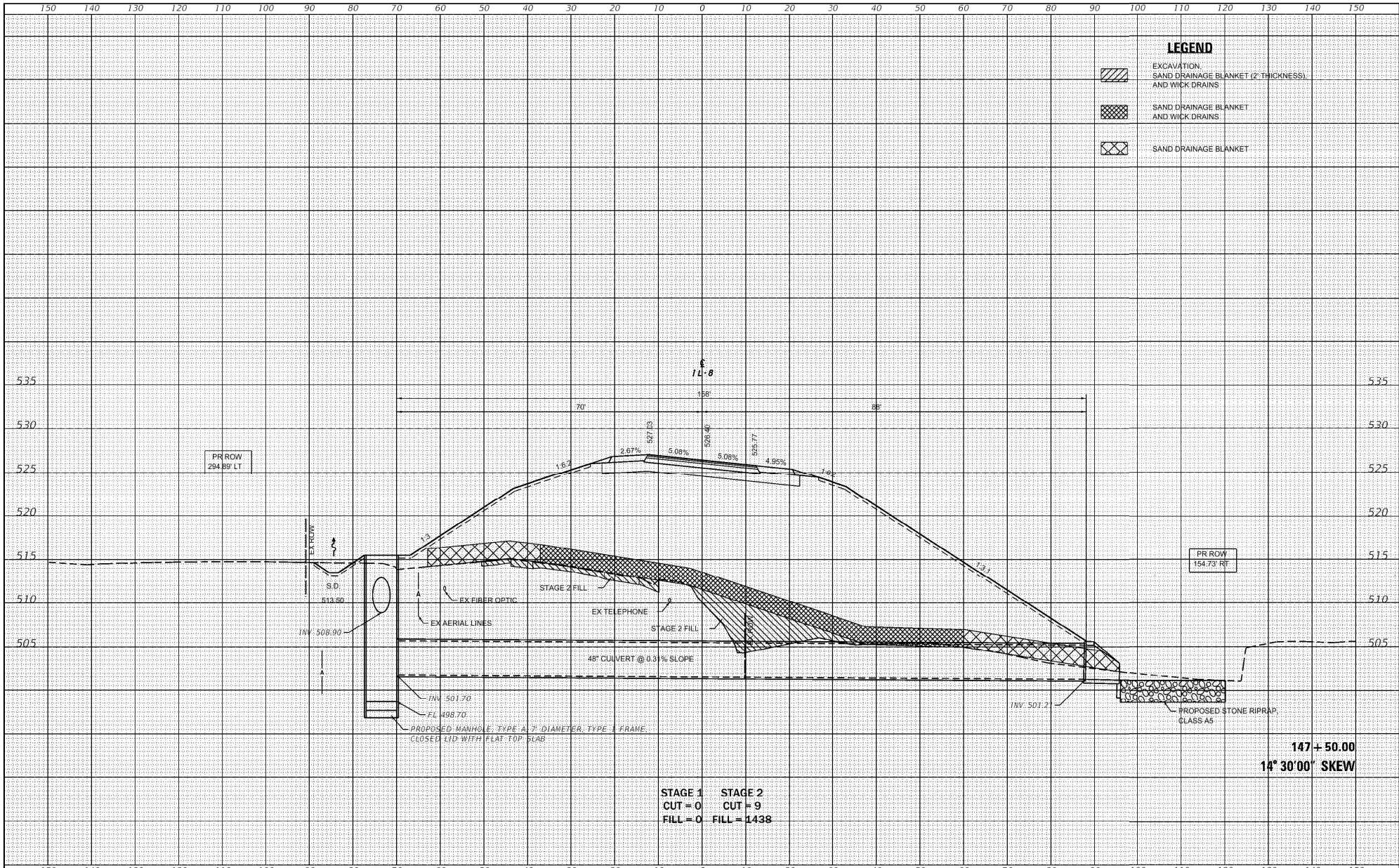
DATE	
BY	
REVISION	
DATE	
BY	
REVISION	
DATE	
BY	
REVISION	
DATE	
BY	
REVISION	



FILE NAME	USER NAME	DESIGNED	REVISION	STATE OF ILLINOIS DEPARTMENT OF TRANSPORTATION				CROSS SECTIONS IL ROUTE 8				P.A.S. SITE	SECTION	COUNTY	TOTAL SHEETS	SHEET NO.
S:\Projects\409-002-180 IL 8 over BNSF Phase B\Design\CADD	Betsy	JLS	-									1-388	(Z-1V)BR-2	PEORIA	235	202
PILOT SCALE	PILOT DATE	CHECKED	REVISION									CONTRACT NO. 68799				
20.0000' / in.	8/22/2019	ESW	-									ILLINOIS FED. AID PROJECT				
Default:		DATE	REVISION	SCALE	SHEET	OF	SHEETS	STA.	TO STA.							
		01-17-18	-	1"=20'	40	58		147+00.00	147+30.044							

DATE	
BY	
DESIGNED	
DRAWN	
CHECKED	
IN CHARGE	
PROJECT NO.	
SHEET NO.	

DATE	
BY	
DESIGNED	
DRAWN	
CHECKED	
IN CHARGE	
PROJECT NO.	
SHEET NO.	



STAGE 1 STAGE 2
 CUT = 0 CUT = 9
 FILL = 0 FILL = 1438

LEGEND

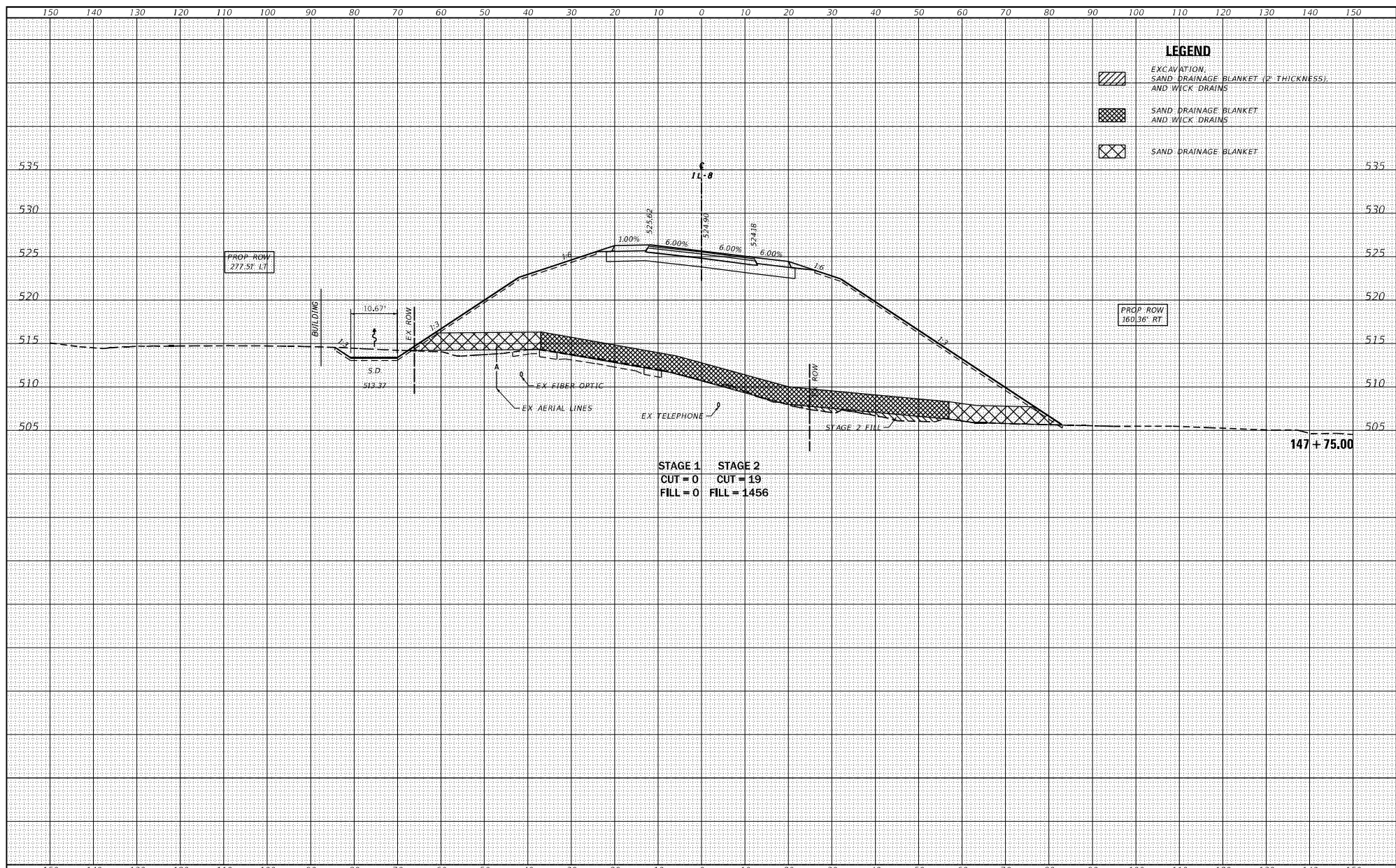
	EXCAVATION SAND DRAINAGE BLANKET (2" THICKNESS) AND WICK DRAINS
	SAND DRAINAGE BLANKET AND WICK DRAINS
	SAND DRAINAGE BLANKET

147 + 50.00
14° 30' 00" SKEW

FILE NAME =	USER NAME = horstj	DESIGNED - JLS	REVISED - KH (DOT) 06/07/21	STATE OF ILLINOIS DEPARTMENT OF TRANSPORTATION	CROSS SECTIONS IL ROUTE 8			F.A.S. SITE =	SECTION =	COUNTY =	TOTAL SHEETS =	SHEET NO. =
0:\PDRGEN\WINWORD\KSTDB\PLN\54\Squad03\RII_8 over BNSF at EdwardsPlan revisions IDOT post Loch Final Submittal\RE	DRAWN = 468795-shr-va	LEG	REVISED -		1388	IZ-1VBIBR-2	PEORIA	235	203			
PLOT SCALE = 20.0000 / in.	CHECKED - ESW	REVISED -	REVISED -		CONTRACT NO. 68799							
PLOT DATE = 6/7/2021	DATE = 01-17-18	REVISED -	REVISED -		SCALE: 1"=20'	SHEET 41 OF 58 SHEETS	STA. 147+50.00 TO STA. 147+55.0170	ILLINOIS FED. AID PROJECT				

DATE	
BY	
DESIGNED	
DRAWN	
CHECKED	
IN CHARGE	
DATE	
BY	
DESIGNED	
DRAWN	
CHECKED	
IN CHARGE	

DATE	
BY	
DESIGNED	
DRAWN	
CHECKED	
IN CHARGE	
DATE	
BY	
DESIGNED	
DRAWN	
CHECKED	
IN CHARGE	



LEGEND

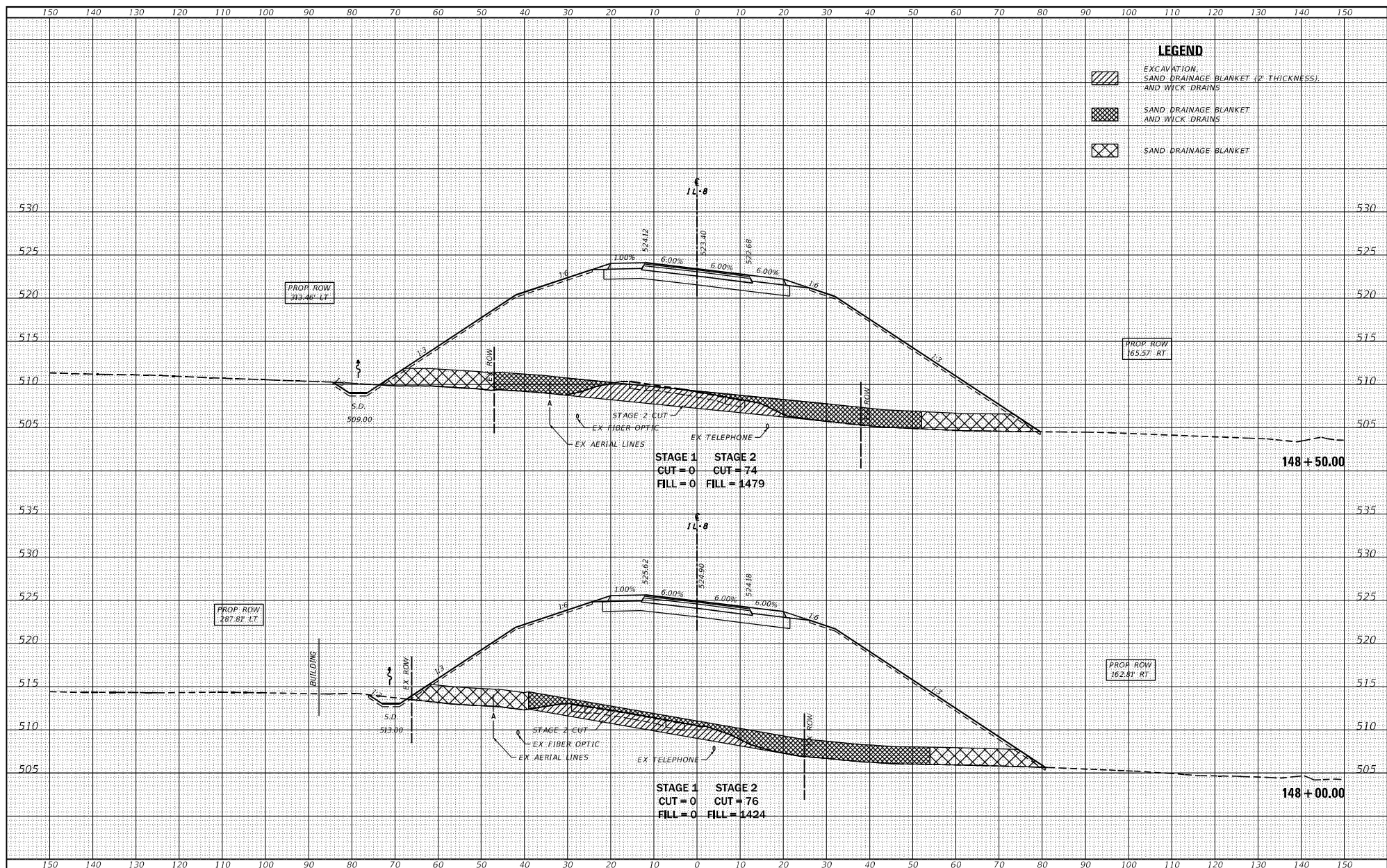
	EXCAVATION, SAND DRAINAGE BLANKET (2" THICKNESS), AND WICK DRAINS
	SAND DRAINAGE BLANKET AND WICK DRAINS
	SAND DRAINAGE BLANKET

STAGE 1 STAGE 2
 CUT = 0 CUT = 19
 FILL = 0 FILL = 1456

FILE NAME	USER NAME	DESIGNED	REVISIONS	STATE OF ILLINOIS DEPARTMENT OF TRANSPORTATION		CROSS SECTIONS IL ROUTE 8		F.A.S. SITE	SECTION	COUNTY	TOTAL SHEETS	SHEET NO.
S:\Projects\4606-002-180 IL R over BNSF Phase B\Design\CADD	Betsy	JLS	-					1388	(Z-1V)BR-2	PEORIA	236	204
PILOT SCALE	PILOT DATE	CHECKED	DATE	REVISIONS	SCALE	SHEET	OF	SHEETS	STA.	TO STA.	CONTRACT NO. 68799	
20.0000' / in.	8/22/2019	ESW	01-17-18	-	1"=20'	42	58		147+57.748	147+75.00	ILLINOIS FED. AID PROJECT	

DATE	
BY	
REVISION	
NO.	
DATE	
BY	
REVISION	
NO.	

DATE	
BY	
REVISION	
NO.	
DATE	
BY	
REVISION	
NO.	



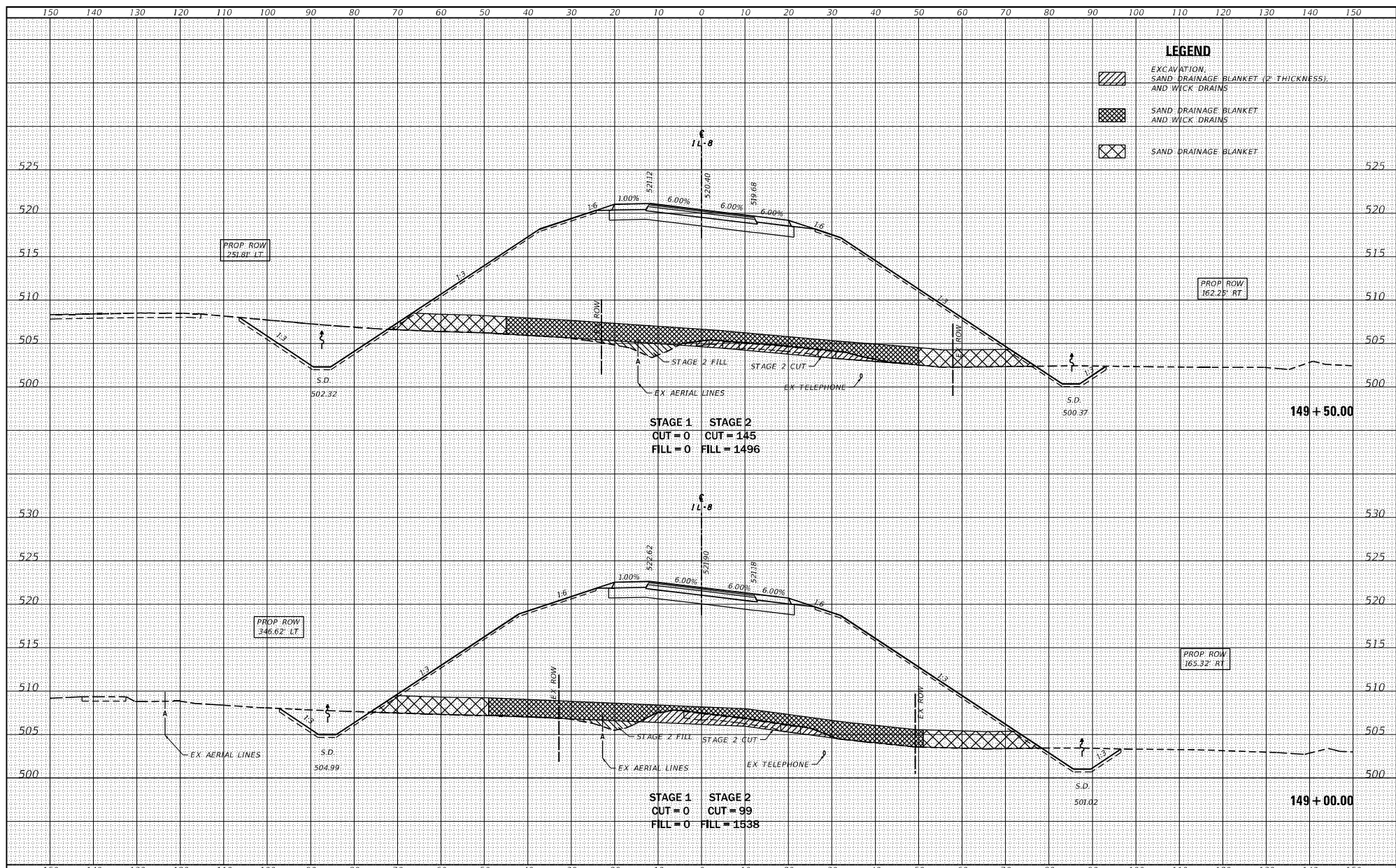
LEGEND

	EXCAVATION, SAND DRAINAGE BLANKET (2" THICKNESS), AND WICK DRAINS
	SAND DRAINAGE BLANKET AND WICK DRAINS
	SAND DRAINAGE BLANKET

FILE NAME =	USER NAME = Betsy	DESIGNED - JLS	REVISION -	<p align="center">STATE OF ILLINOIS DEPARTMENT OF TRANSPORTATION</p> <p align="center">CROSS SECTIONS IL ROUTE 8</p>	F.A.S. RITE =	SECTION =	COUNTY =	TOTAL SHEETS =
S:\Projects\409-002-180 IL 8 over BNSF Phase III Design\CADD	Sheets\409002-180 IL 8.dgn	DRAWN - LEC	REVISION -		1388	(Z-1)BIBR-2	PEORIA	235
PILOT SCALE = 20.0000' / in.	CHECKED - ESW	REVISION -	REVISION -		CONTRACT NO. 68799			
PILOT DATE = 8/22/2019	DATE - 01-17-18	REVISION -	REVISION -		CONTRACT NO. 68799			
Default:				SCALE: 1"=20'	SHEET 43 OF 58 SHEETS	STA. 148+00.00	TO STA. 148+50.00	ILLINOIS FED. AID PROJECT

DATE	
BY	
REVISION	
NO.	
DATE	
BY	
REVISION	
NO.	

DATE	
BY	
REVISION	
NO.	
DATE	
BY	
REVISION	
NO.	



FILE NAME = S:\Projects\4409-002-180 IL 8 over BNSF Phase III Design\CADD\		USER NAME = Betsy		DESIGNED - JLS		REVISION -	
SHEET SCALE = 20.0000' / in.		DRAWN - LEC		CHECKED - ESW		REVISION -	
PLOT DATE = 8/22/2019		DATE = 01-17-18		REVISION -		REVISION -	

**STATE OF ILLINOIS
DEPARTMENT OF TRANSPORTATION**

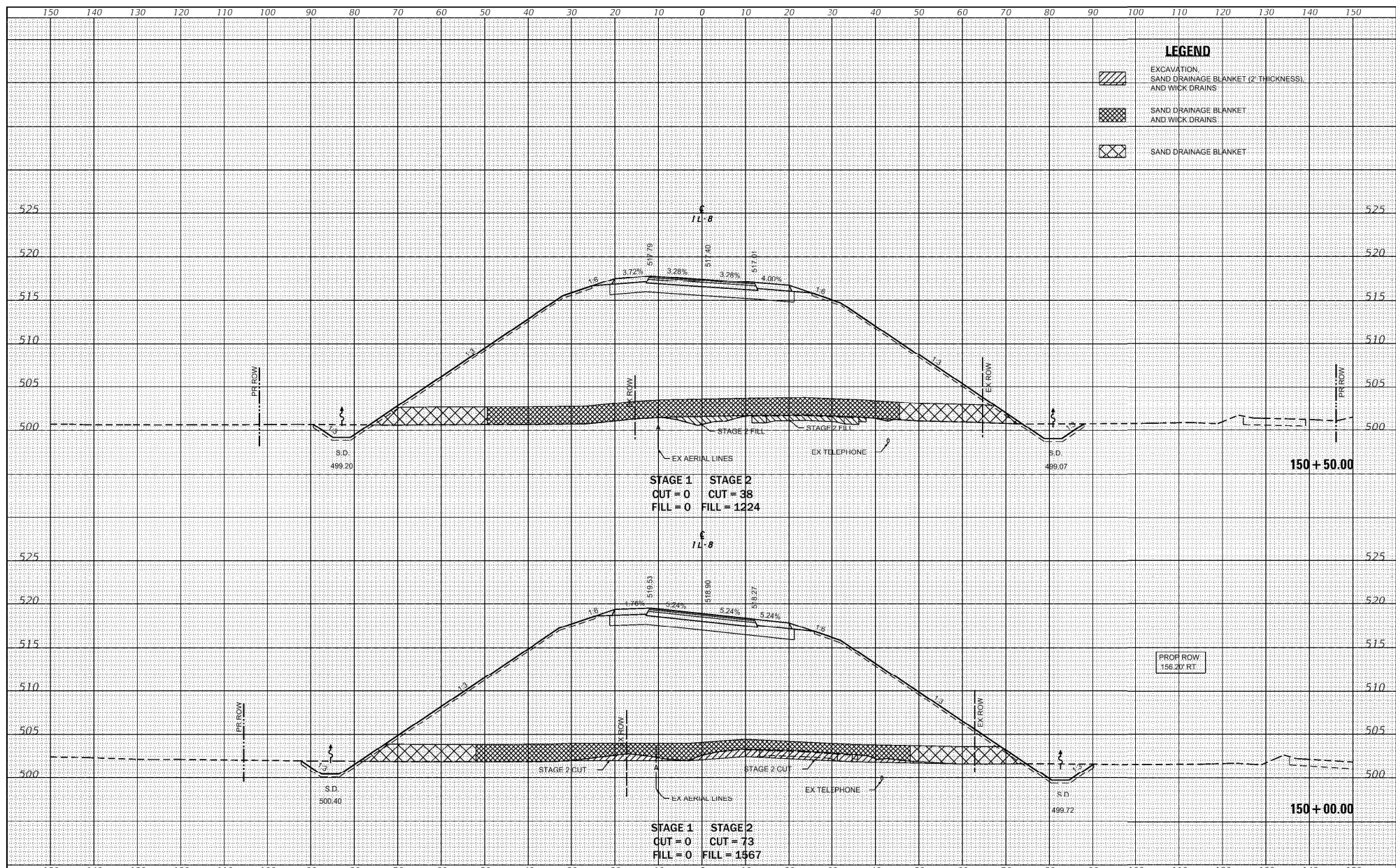
**CROSS SECTIONS
IL ROUTE 8**

SCALE: 1"=20' SHEET 44 OF 58 SHEETS STA. 149+00.00 TO STA. 149+50.00

F.A.S. NO.	SECTION	COUNTY	TOTAL SHEETS	SHEET NO.
1388	(Z-1)BIBR-2	PEORIA	235	206
CONTRACT NO. 68799			ILLINOIS FED. AID PROJECT	

DATE	
BY	
DESIGNED	
DRAWN	
CHECKED	
DATE	

DATE	
BY	
DESIGNED	
DRAWN	
CHECKED	
DATE	



LEGEND

	EXCAVATION
	SAND DRAINAGE BLANKET (2" THICKNESS) AND WICK DRAINS
	SAND DRAINAGE BLANKET AND WICK DRAINS
	SAND DRAINAGE BLANKET

STAGE 1 STAGE 2
 CUT = 0 CUT = 38
 FILL = 0 FILL = 1224

STAGE 1 STAGE 2
 CUT = 0 CUT = 73
 FILL = 0 FILL = 1467

**STATE OF ILLINOIS
 DEPARTMENT OF TRANSPORTATION**

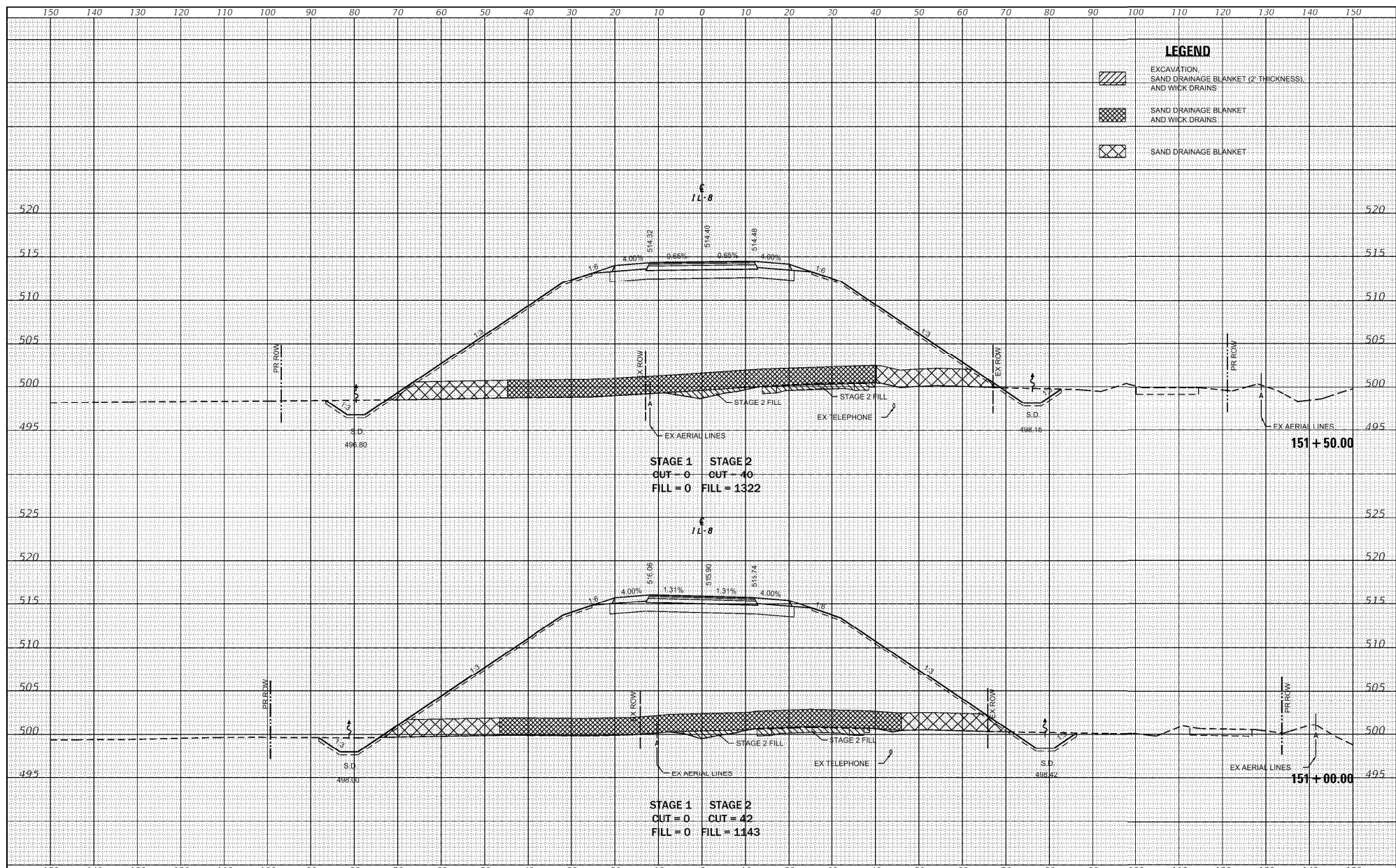
**CROSS SECTIONS
 IL ROUTE 8**

FILE NAME =	USER NAME = horstj	DESIGNED - JLS	REVISED - KH (DOT) 06/07/21
0:\PDRGEN\WINWORD\KSTDB\PLN\59Squad03\RIE_8 over BMSF at Edwards\Plan revisions IDOT post Loch Final Submittal\RE Eng\DRAWN\468799-shr-rt-LEG.dwg	CHECKED - ESW	REVISED -	REVISED -
Default	PLOT SCALE = 20.0000 / in.	DATE = 01-17-18	REVISED -
	PLOT DATE = 6/7/2021		

SCALE: 1"=20'	SHEET 45 OF 58 SHEETS	STA. 150+00.00 TO STA. 150+50.00	F.A.S. RTE. 1388	SECTION 12-1VBIBR-2	COUNTY PEGRIA	TOTAL SHEETS 235	SHEET NO. 207
						CONTRACT NO. 68799	
						ILLINOIS FED. AID PROJECT	

DATE	
BY	
DESIGNED	
CHECKED	
DATE	
BY	
DESIGNED	
CHECKED	
DATE	
BY	
DESIGNED	
CHECKED	
DATE	
BY	

DATE	
BY	
DESIGNED	
CHECKED	
DATE	
BY	
DESIGNED	
CHECKED	
DATE	
BY	
DESIGNED	
CHECKED	
DATE	
BY	



LEGEND

	EXCAVATION
	SAND DRAINAGE BLANKET (2" THICKNESS) AND WICK DRAINS
	SAND DRAINAGE BLANKET AND WICK DRAINS
	SAND DRAINAGE BLANKET

STAGE 1 STAGE 2
 OUT = 0 OUT = 40
 FILL = 0 FILL = 1322

STAGE 1 STAGE 2
 OUT = 0 CUT = 42
 FILL = 0 FILL = 1143

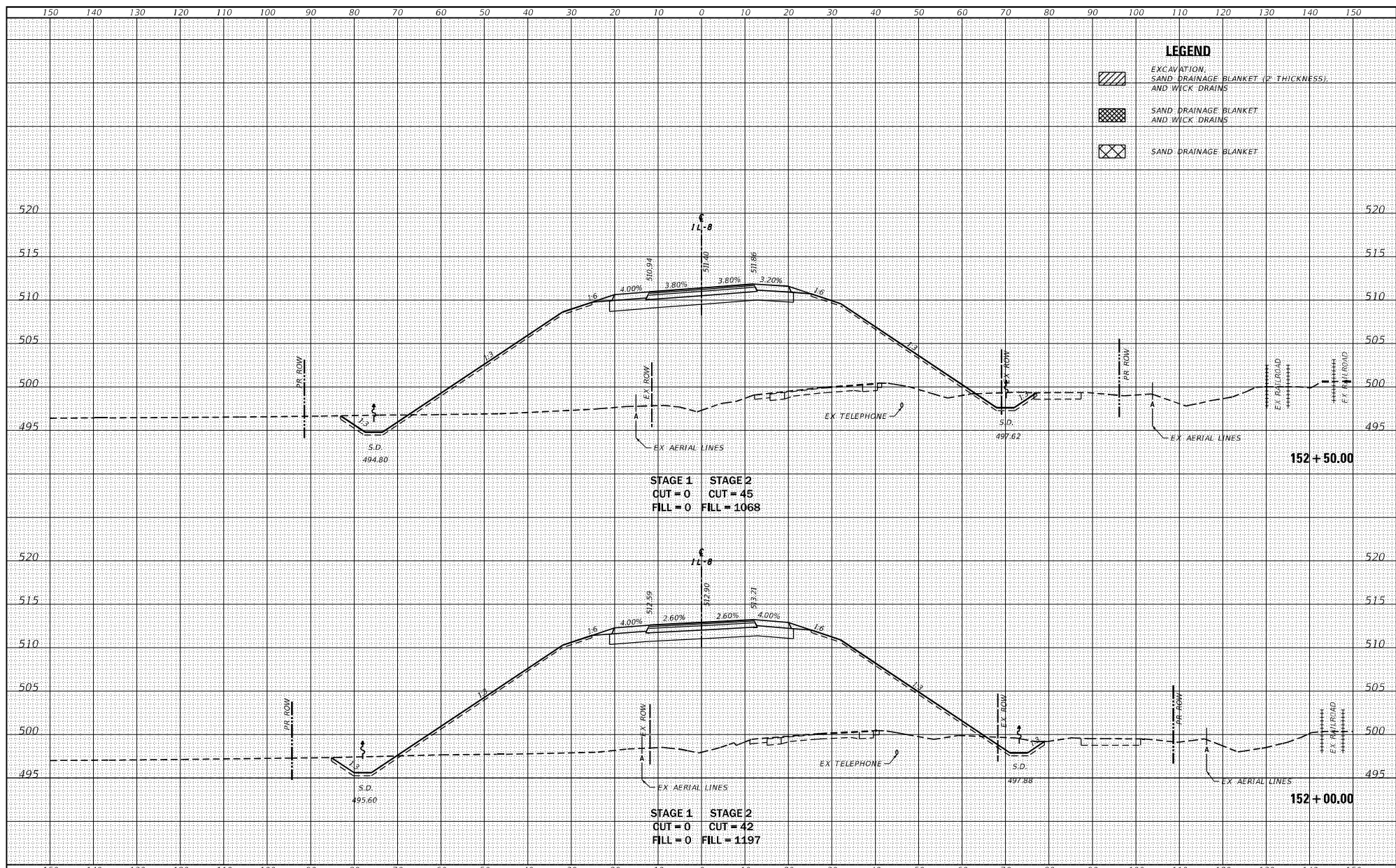
STATE OF ILLINOIS
 DEPARTMENT OF TRANSPORTATION

CROSS SECTIONS
 IL ROUTE 8

FILE NAME =	USER NAME = horstj	DESIGNED - JLS	REVISED - KH (DOT) 06/07/21	STATE OF ILLINOIS DEPARTMENT OF TRANSPORTATION SCALE: 1"=20' SHEET 46 OF 58 SHEETS STA. 151+00.00 TO STA. 151+50.00	COUNTY TOTAL SHEETS NO. PEGRIA 235 208 CONTRACT NO. 68799
DESIGNED BY =	CHECKED = ESW	REVISED -	REVISED -		
DATE = 6/7/2021	DATE = 01-17-18	REVISED -	REVISED -		

DATE	
BY	
REVISION	
DATE	
BY	
REVISION	
DATE	
BY	
REVISION	

DATE	
BY	
REVISION	
DATE	
BY	
REVISION	
DATE	
BY	
REVISION	



LEGEND

	EXCAVATION, SAND DRAINAGE BLANKET (2" THICKNESS), AND WICK DRAINS
	SAND DRAINAGE BLANKET AND WICK DRAINS
	SAND DRAINAGE BLANKET

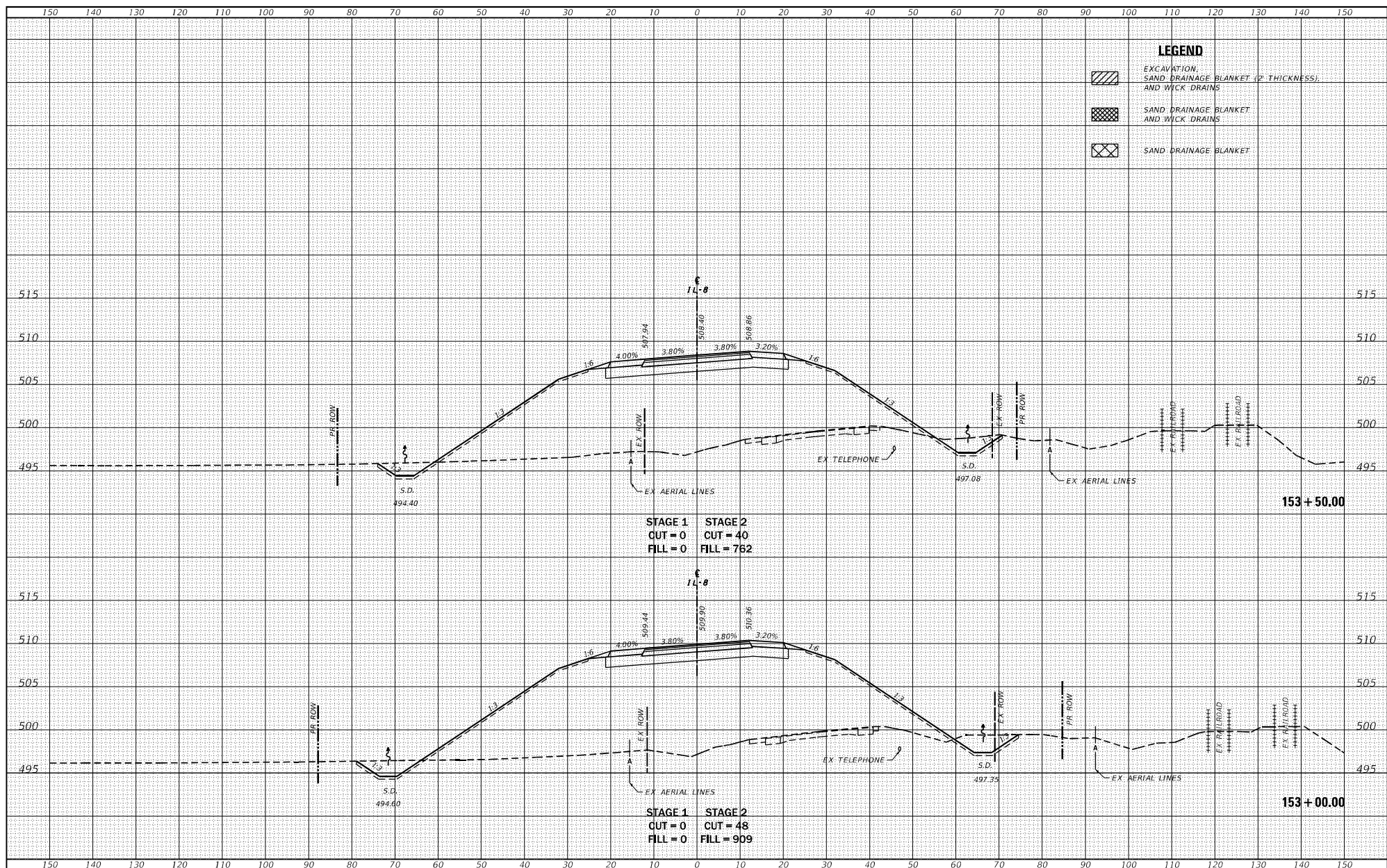
STAGE 1 STAGE 2
 CUT = 0 CUT = 45
 FILL = 0 FILL = 1068

STAGE 1 STAGE 2
 CUT = 0 CUT = 42
 FILL = 0 FILL = 1197

FILE NAME =		USER NAME = Betsy		DESIGNED - JLS	REVISED -	STATE OF ILLINOIS DEPARTMENT OF TRANSPORTATION		CROSS SECTIONS IL ROUTE 8		F.A.S. SITE	SECTION	COUNTY	TOTAL SHEETS
S:\Projects\4606-002-180 IL R over BNSF Phase B\Design\CADD		Sheets\460798\01\c18.8.dgn		DRAWN - LEC	REVISED -			1388	(Z-1V)BIR-2	PEORIA	236		
PILOT SCALE = 20.0000' / in.		CHECKED - ESW	REVISED -	SCALE: 1"=20'		SHEET 47	OF 58 SHEETS	STA. 152+00.00	TO STA. 152+50.00	CONTRACT NO. 68799			
PLOT DATE = 8/22/2019		DATE - 01-17-18	REVISED -							ILLINOIS FED. AID PROJECT			

DATE	
BY	
REVISION	
NO.	
DATE	
BY	
REVISION	
NO.	

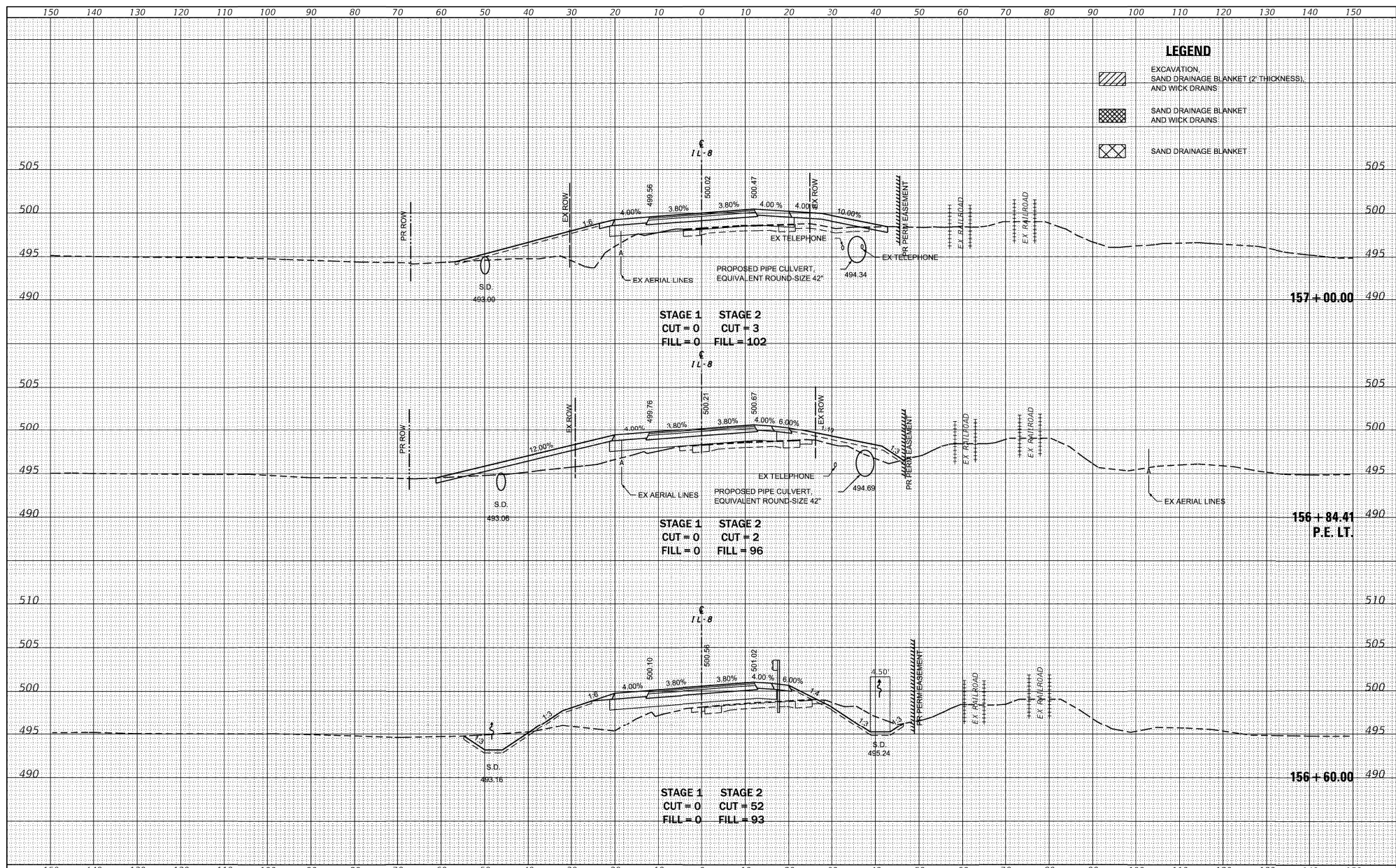
DATE	
BY	
REVISION	
NO.	
DATE	
BY	
REVISION	
NO.	



FILE NAME = S:\Projects\4609-002-180 IL 8 over BNSF Phase B\Design\CADD	USER NAME = Betsy Sheets\B460789\sheet180.dgn	DESIGNED = JLS	REVISION =	STATE OF ILLINOIS DEPARTMENT OF TRANSPORTATION	CROSS SECTIONS IL ROUTE 8		F.A.S. NO. = 1388	SECTION = (Z-1)BIBR-2	COUNTY = PEORIA	TOTAL SHEETS = 236	SHEET NO. = 210	
PILOT SCALE = 20.0000' / in.	CHECKED = ESW	REVISION =	PILOT DATE = 8/22/2019		DATE = 01-17-18	REVISION =	SCALE = 1"=20'	SHEET 48 OF 58 SHEETS	STA. 153+00.00 TO STA. 153+50.00	CONTRACT NO. 68799		
ILLINOIS FED. AID PROJECT												
Default:												

DATE	
BY	
REVISION	
NO.	
REVISION	
NO.	

DATE	
BY	
REVISION	
NO.	
REVISION	
NO.	



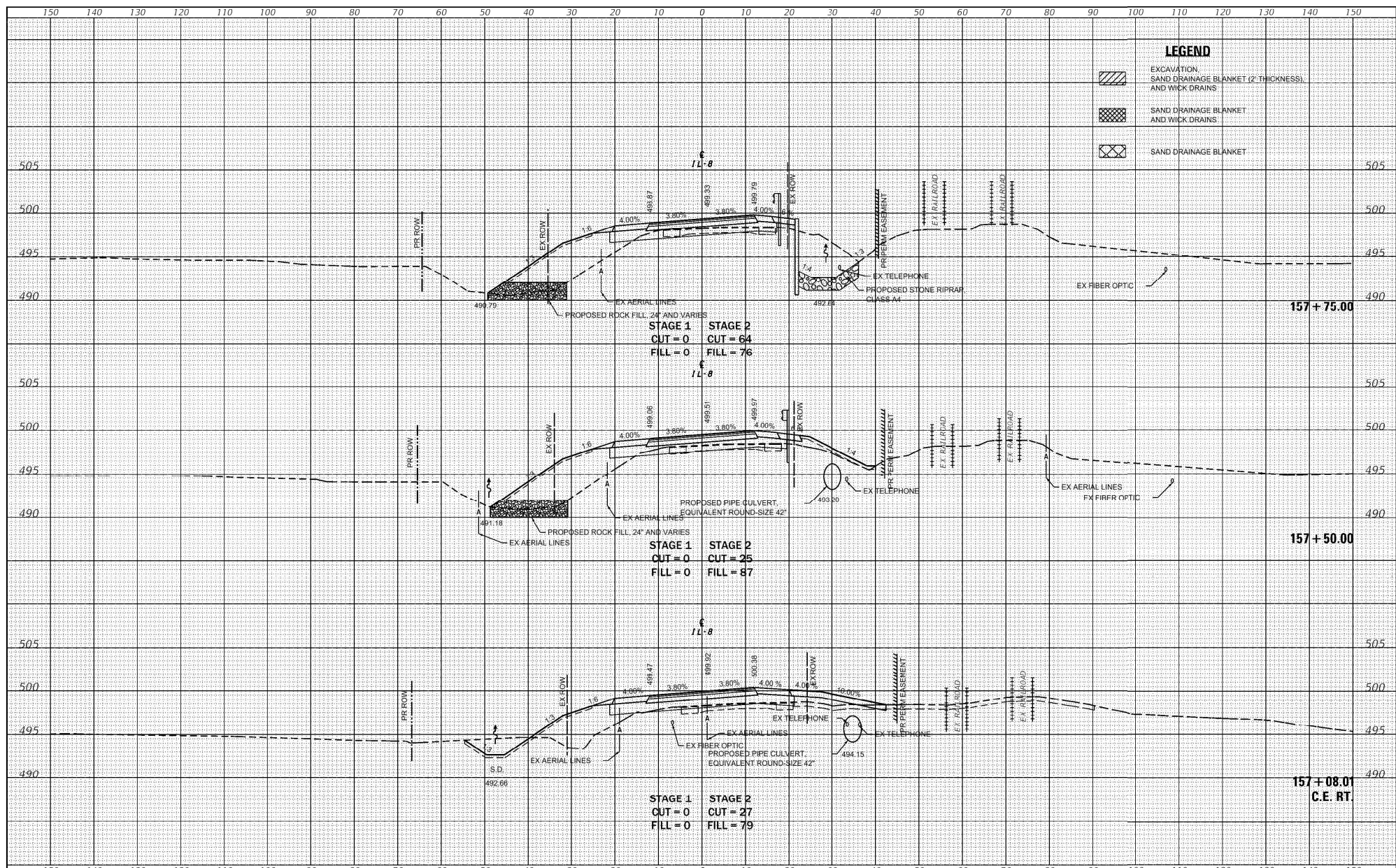
LEGEND

	EXCAVATION, SAND DRAINAGE BLANKET (2" THICKNESS), AND WICK DRAINS
	SAND DRAINAGE BLANKET AND WICK DRAINS
	SAND DRAINAGE BLANKET

FILE NAME =	USER NAME = horstj	DESIGNED - JLS	REVISED - KH (IDOT) 05/03/21	<p align="center">STATE OF ILLINOIS DEPARTMENT OF TRANSPORTATION</p> <p align="center">CROSS SECTIONS IL ROUTE 8</p>	F.A.S. RITE. 1388	SECTION (Z-1V)IBR-2	COUNTY PEORIA	TOTAL SHEETS 235	SHEET NO. 213	
OX:PWGENWINWORDKSDPLAS5Squad03VIL 8 over BNSF at EdwardsPlan revisions IDOT post Lock Final SubmittalRE Eng	DRAWN 468799-shr-ec:LEGn	CHECKED - ESW	REVISED -		SCALE: 1"=20'	SHEET 51 OF 58 SHEETS	STA. 156+50.00	TO STA. 157+00.00	CONTRACT NO. 68799	
PLOT SCALE = 20.0000' / in.	DATE - 01-17-18	REVISED -	REVISED -		ILLINOIS	FED. AID PROJECT				
PLOT DATE = 5/4/2021		REVISED -	REVISED -							

DATE	
BY	
DESIGNED	
CHECKED	
DATE	
BY	
DESIGNED	
CHECKED	
DATE	
BY	
DESIGNED	
CHECKED	
DATE	
BY	

DATE	
BY	
DESIGNED	
CHECKED	
DATE	
BY	
DESIGNED	
CHECKED	
DATE	
BY	
DESIGNED	
CHECKED	
DATE	
BY	



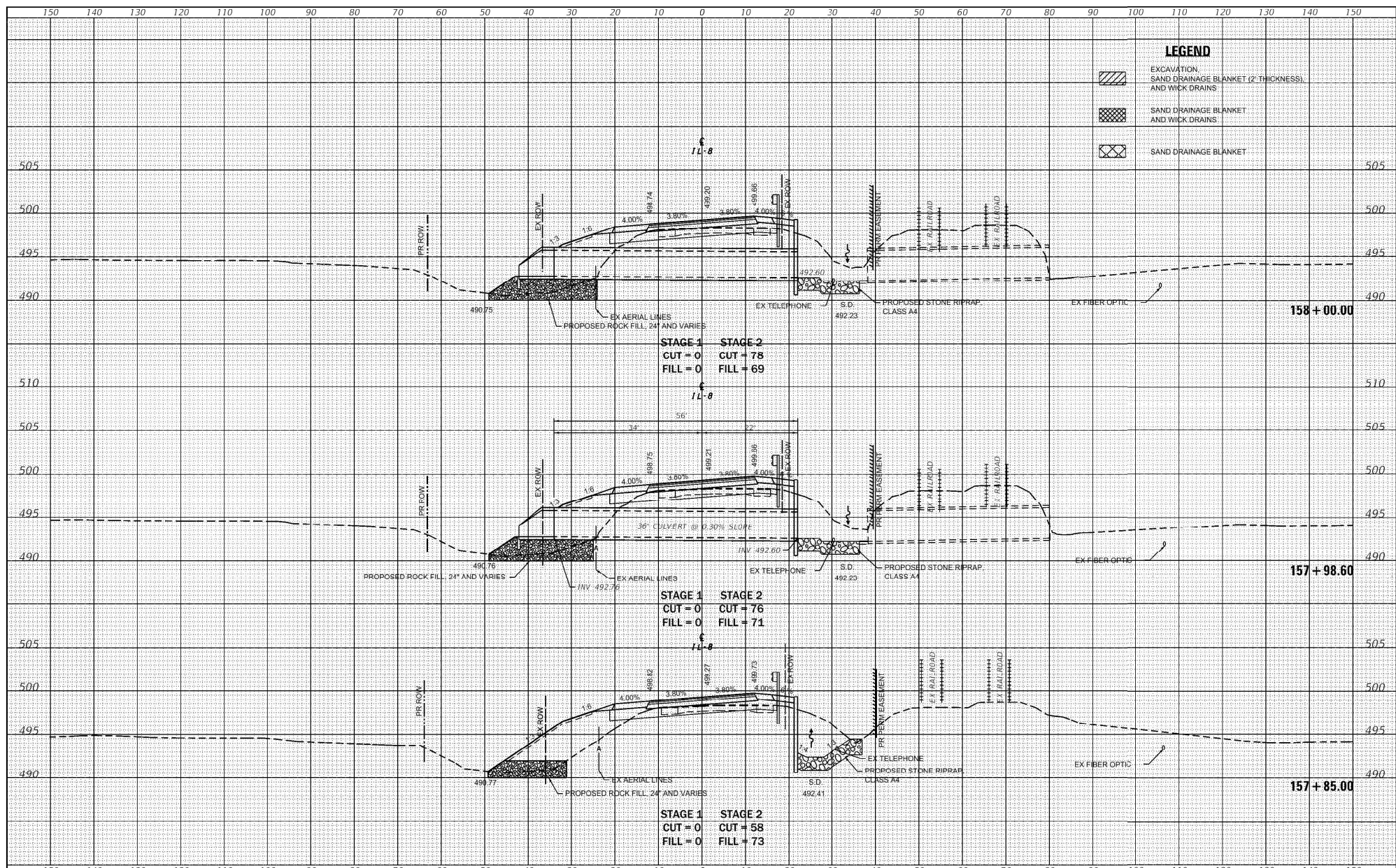
LEGEND

	EXCAVATION SAND DRAINAGE BLANKET (2\"/>
	SAND DRAINAGE BLANKET AND WICK DRAINS
	SAND DRAINAGE BLANKET

FILE NAME =	USER NAME = horstj	DESIGNED - JLS	REVISED - KH (DOT) 05/03/21	STATE OF ILLINOIS DEPARTMENT OF TRANSPORTATION	CROSS SECTIONS			F.A.S. NO.	SECTION	COUNTY	TOTAL SHEETS	SHEET NO.	
0:\PDRGEN\WINWORD\DOTS\PLN\53\Squad03\IL 8 over BNSF at EdwardsPlan revisions IDOT post Loch Final Submittal\RE	DRAWN=468795-shr-rt	CHECKED - ESW	REVISED -		IL ROUTE 8			1388	(Z-1)BIBR-2	PEORIA	235	214	
Default	PLOT SCALE = 20.0000 / in.	DATE - 01-17-18	REVISED -		SCALE: 1"=20'			SHEET 52	OF 58 SHEETS	STA. 157+08.0127	TO STA. 157+75.00	CONTRACT NO. 68799	
	PLOT DATE = 5/3/2021				ILLINOIS			FED. AID PROJECT					

DATE	
BY	
DRAWN	
CHECKED	
DESIGNED	
IN CHARGE	
PROJECT NO.	
SHEET NO.	

DATE	
BY	
DRAWN	
CHECKED	
DESIGNED	
IN CHARGE	
PROJECT NO.	
SHEET NO.	



LEGEND

	EXCAVATION SAND DRAINAGE BLANKET (2" THICKNESS) AND WICK DRAINS
	SAND DRAINAGE BLANKET AND WICK DRAINS
	SAND DRAINAGE BLANKET

STAGE 1 STAGE 2
 CUT = 0 CUT = 78
 FILL = 0 FILL = 69

STAGE 1 STAGE 2
 CUT = 0 CUT = 76
 FILL = 0 FILL = 71

STAGE 1 STAGE 2
 CUT = 0 CUT = 58
 FILL = 0 FILL = 73

**STATE OF ILLINOIS
 DEPARTMENT OF TRANSPORTATION**

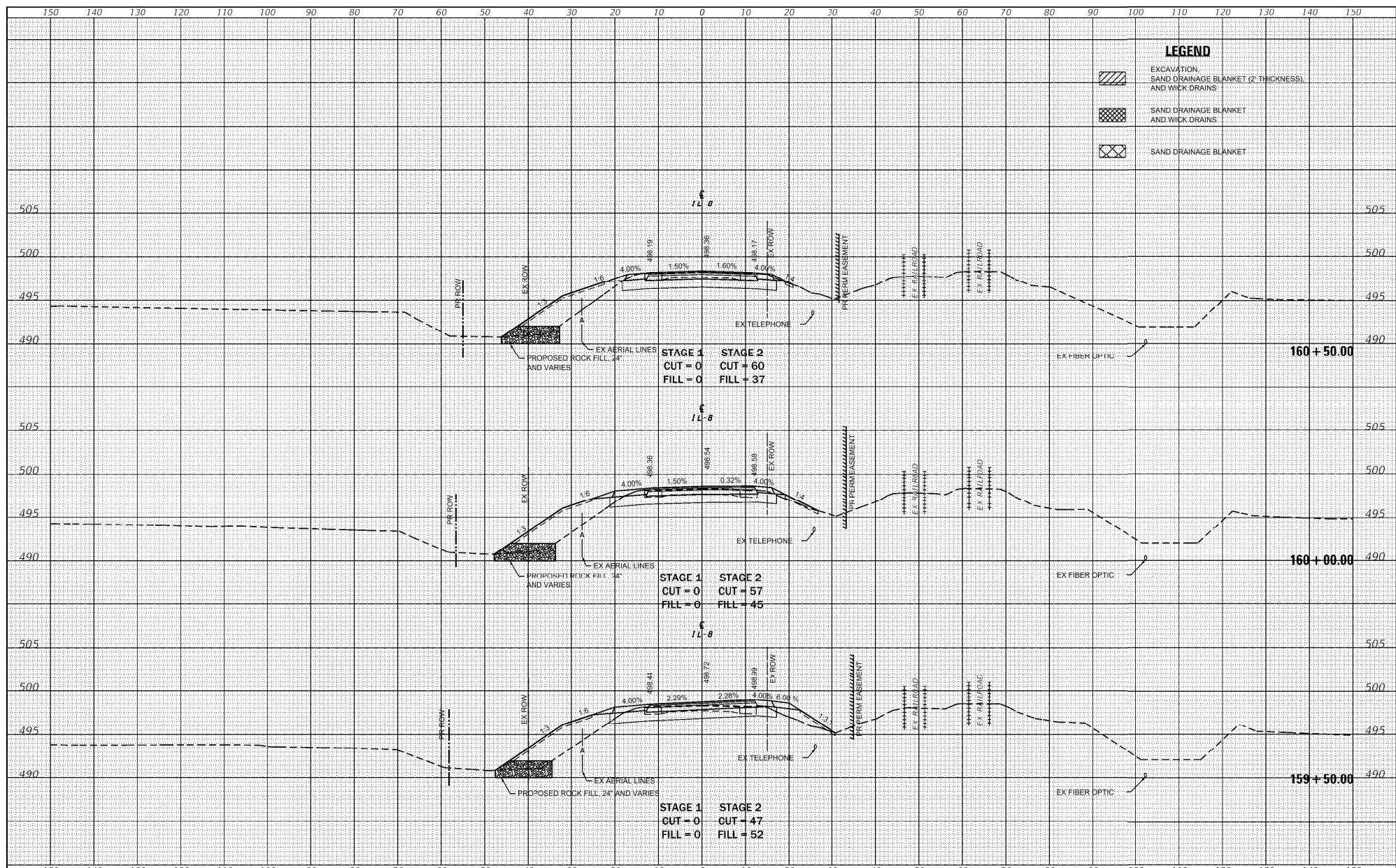
**CROSS SECTIONS
 IL ROUTE 8**

FILE NAME =	USER NAME = horstj	DESIGNED - JLS	REVISED - KH (DOT) 05/03/21
0:\PDRGEN\WINWORD\KST08\PLN\53\Squad03\RIE 8 over BNSF at Edwards\Plan revisions IDOT post Loch Final Submittal\RE Eng\DRAWN\468799-shr-rt-LEG.dwg	CHECKED - ESW	REVISED -	REVISED -
PLOT SCALE = 20.0000' / in.	DATE - 01-17-18	REVISED -	REVISED -
PLOT DATE = 5/3/2021			

SCALE: 1"=20'	SHEET 53 OF 58 SHEETS	STA. 157+85.00 TO STA. 158+00.00	F.A.S. RTE. 1388	SECTION IZ-1VBIBR-2	COUNTY PEORIA	TOTAL SHEETS 235	SHEET NO. 215
						CONTRACT NO. 68799	
						ILLINOIS FED. AID PROJECT	

DATE	
BY	
REVISION	
DATE	
BY	
REVISION	
DATE	
BY	
REVISION	
DATE	
BY	
REVISION	

DATE	
BY	
REVISION	
DATE	
BY	
REVISION	
DATE	
BY	
REVISION	
DATE	
BY	
REVISION	



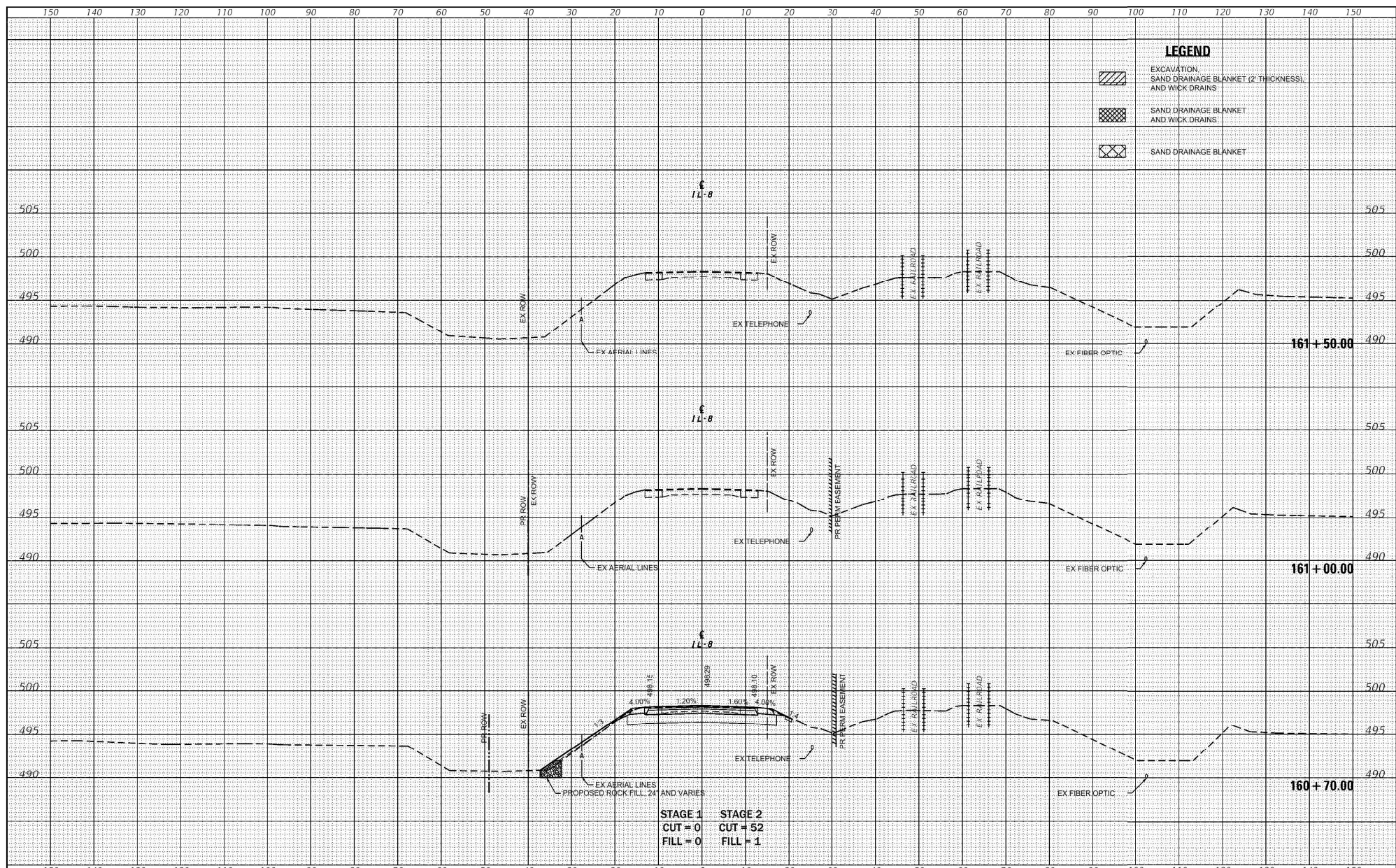
LEGEND

	EXCAVATION SAND DRAINAGE BLANKET (2\"/>
	SAND DRAINAGE BLANKET AND WICK DRAINS
	SAND DRAINAGE BLANKET

FILE NAME =	USER NAME = horstj	DESIGNED - JLS	REVISED - KH (DOT) 05/03/21	STATE OF ILLINOIS DEPARTMENT OF TRANSPORTATION	CROSS SECTIONS		F.A.S. NO.	SECTION	COUNTY	TOTAL SHEETS	SHEET NO.	
0:\PDRGEN\WINWORD\DOT\PLN\59Squad03\RL 8 over BNSF at Edward's Plan revisions IDOT post Loch Final Submittal\RE	DRAWN 468795-shr-LEG	CHECKED - ESW	REVISED -		1388	IZ-1VBIBR-2	PEORIA	235	218	CONTRACT NO. 68799		
Default	PLOT SCALE = 20.0000' / in.	DATE - 01-17-18	REVISED -		SCALE: 1"=20'	SHEET 56 OF 58 SHEETS	STA. 159+50.00 TO STA. 160+50.00					
	PLOT DATE = 5/3/2021				ILLINOIS FED. AID PROJECT							

DATE	
BY	
DESIGNED	
DRAWN	
CHECKED	
IN CHARGE	
DATE	
BY	
DESIGNED	
DRAWN	
CHECKED	
IN CHARGE	

DATE	
BY	
DESIGNED	
DRAWN	
CHECKED	
IN CHARGE	
DATE	
BY	
DESIGNED	
DRAWN	
CHECKED	
IN CHARGE	

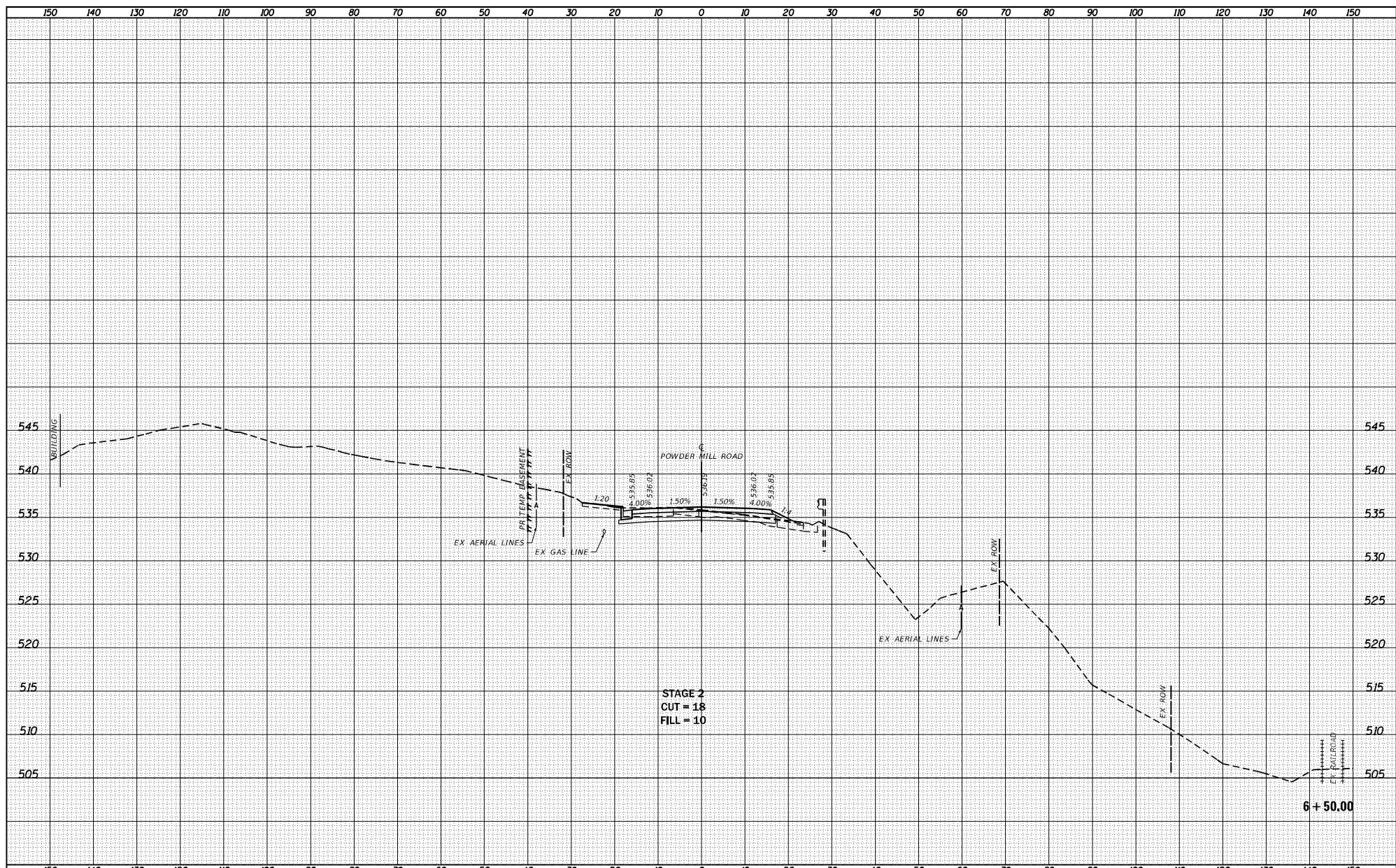


STAGE 1 STAGE 2
 CUT = 0 CUT = 52
 FILL = 0 FILL = 1

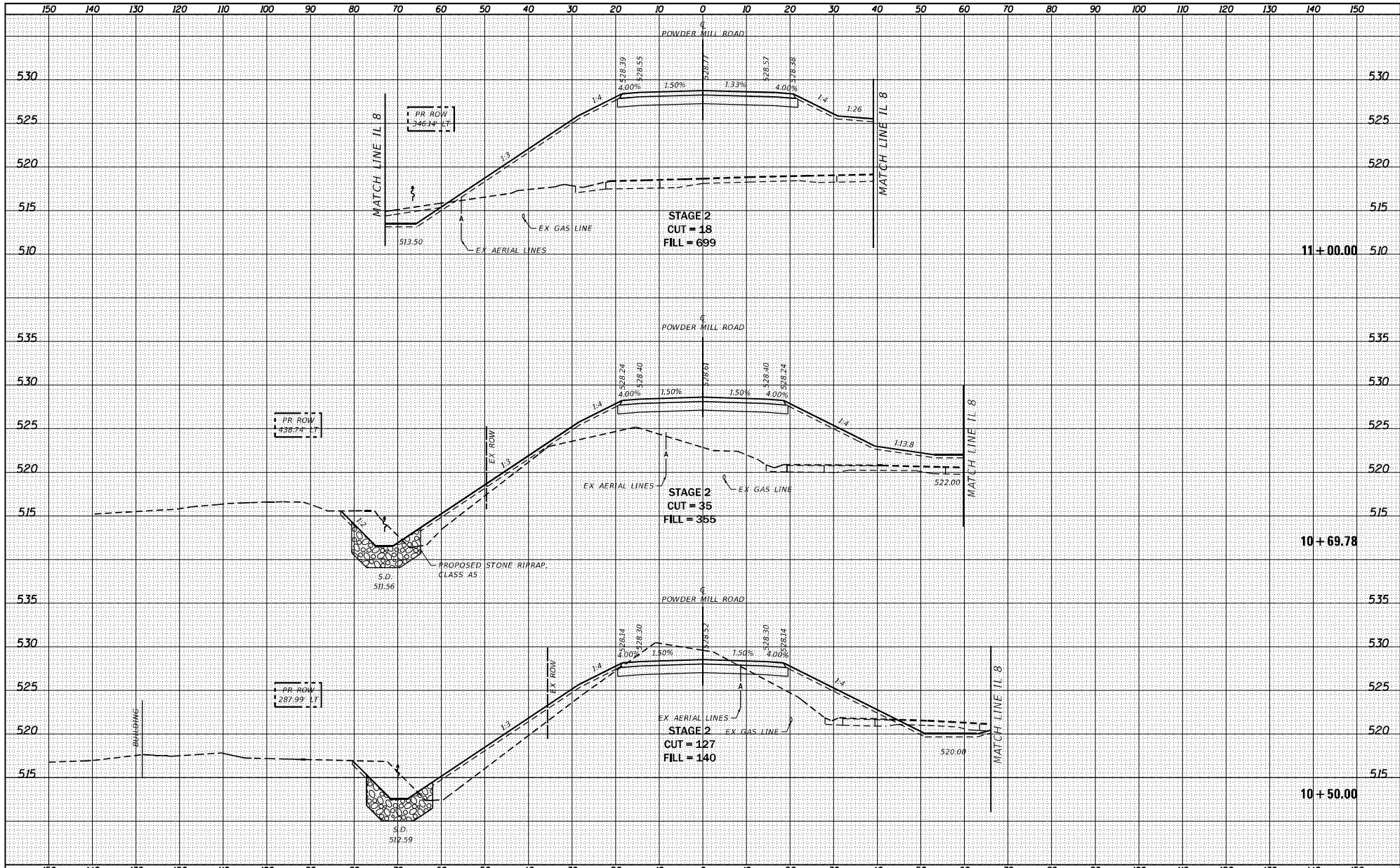
FILE NAME	USER NAME = horstj	DESIGNED - JLS	REVISED - KH (DOT) 05/03/21	STATE OF ILLINOIS DEPARTMENT OF TRANSPORTATION		CROSS SECTIONS IL ROUTE 8		F.A.S. SITE	SECTION	COUNTY	TOTAL SHEETS	SHEET NO.
Default	0:\PDRGEN\WINWORD\KST08\PLN\54Squad03\RIE 8 over BNSF at EdwardsPlan revisions IDOT post Loch Final Submittal\RE Eng\DRAWN\468799-shr-ct-LEG.dwg	CHECKED - ESW	REVISED -			SCALE: 1"=20'	SHEET 57 OF 58 SHEETS	STA. 160+70.00	TO STA. 161+50.00	1388	IZ-1VBIBR-2	PEORIA
	PLOT SCALE = 20.0000 / in.	DATE - 01-17-18	REVISED -					CONTRACT NO. 68799				
	PLOT DATE = 5/3/2021							ILLINOIS FED. AID PROJECT				

DATE	
BY	
DESIGNED	
DRAWN	
CHECKED	
NOTED	
DATE	
BY	

DATE	
BY	
DESIGNED	
DRAWN	
CHECKED	
NOTED	
DATE	
BY	



FILE NAME	USER NAME	DESIGNED	REVISIONS	STATE OF ILLINOIS DEPARTMENT OF TRANSPORTATION		CROSS SECTIONS POWDER MILL ROAD		F.A.S. SITE	SECTION	COUNTY	TOTAL SHEETS	SHEET NO.
S:\Projects\400-000-000-100-11-0-over-BNSF-Phase-B\Design\CADD\3	Bely	JLS	-					1388	(2-1VB)BR-2	PEORIA	236	228
PILOT SCALE	PILOT DATE	CHECKED	REVISIONS					CONTRACT NO. 68799				
20.0000' / 1"	8/22/2018	ESW	-									
		DATE	REVISIONS									
		01-17-18	-									
				SCALE: 1"=20'		SHEET 8 OF 15 SHEETS		STA. 6+50.00 TO STA. 6+50.00				



DATE	
BY	
CHECKED	
DESIGNED	
DRAWN	
IN CHARGE	
PROJECT NO.	
SHEET NO.	

DATE	
BY	
CHECKED	
DESIGNED	
DRAWN	
IN CHARGE	
PROJECT NO.	
SHEET NO.	

FILE NAME	USER NAME	DESIGNED	REVISIONS	STATE OF ILLINOIS DEPARTMENT OF TRANSPORTATION	CROSS SECTIONS POWDER MILL ROAD		F.A.S. SITE	SECTION	COUNTY	TOTAL SHEETS	SHEET NO.
5:\Projects\300-000-000-100-11-0-over-BNSF-Phase-B\Design\CADD\300-000-000-100-11-0-over-BNSF-Phase-B.dwg	Bely	JLS	1		1388	235	235	PEORIA	68799	235	235
PILOT SCALE	CHECKED	DATE	REVISIONS		SCALE	SHEET	OF	SHEETS	STA.	TO STA.	CONTRACT NO.
20.0000' / 1"	ESW	01-17-18	1		1"=20'	15	16	10+50.00	11+00.00	68799	