

STATE OF ILLINOIS
DEPARTMENT OF TRANSPORTATION

F.A. #	SECTION	COUNTY	TOTAL SHEETS	SHEET NO.
VAR	**	VARIOUS	6	1
		ILLINOIS	CONTRACT NO. 72M73	

** D6 CABLE/GUARDRAIL REPAIR 2022

FOR INDEX OF SHEETS, SEE SHEET NO. 2

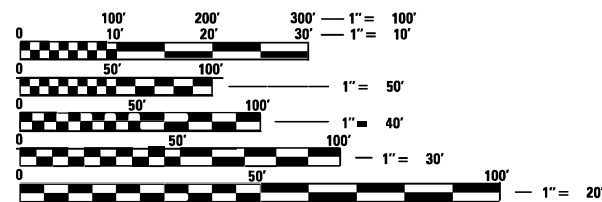
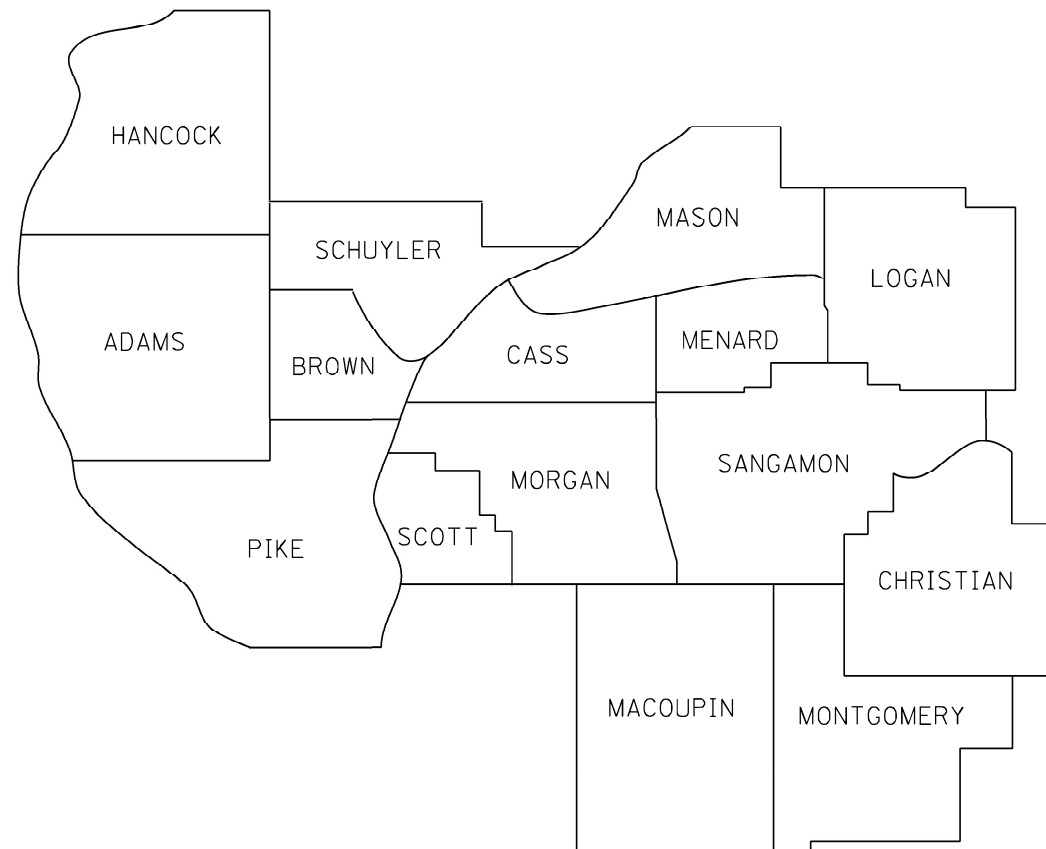
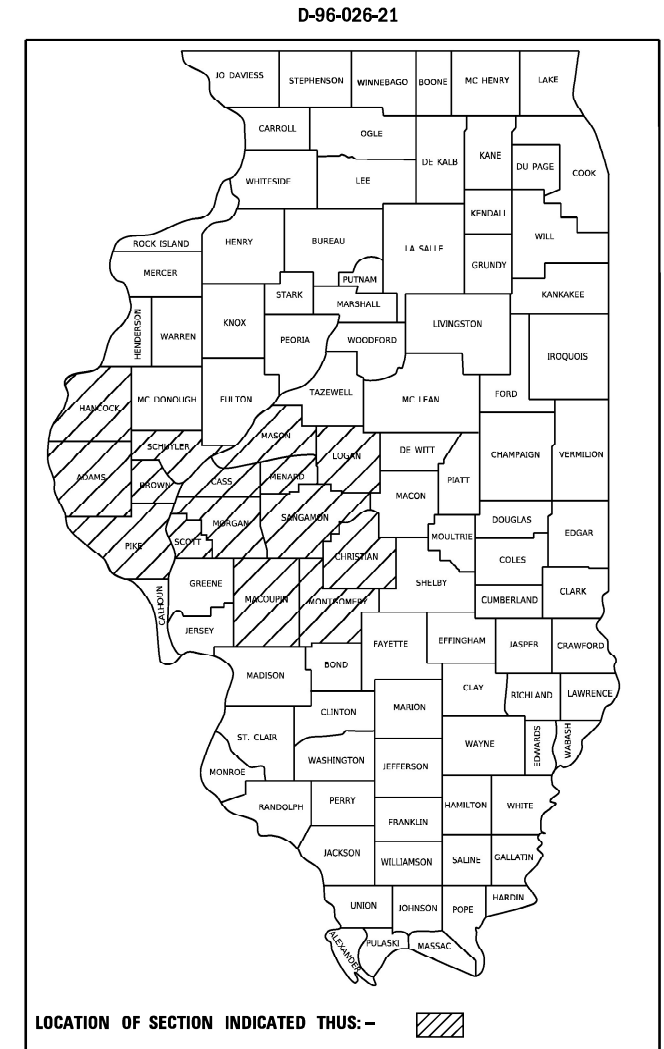
PROPOSED HIGHWAY PLANS

VARIOUS ROUTES
SECTION D6 CABLE/GUARDRAIL REPAIR 2022
CABLE & GUARDRAIL REPAIR
VARIOUS COUNTIES IN D6
C-96-045-21

INDEX OF SHEETS

- 1 COVER SHEET
- 2 GENERAL NOTES
- 3-5 SUMMARY OF QUANTITIES
- 6 CABLE GUARD MARKER DETAIL

FOR LIST OF STANDARDS, SEE SHEET 2



FULL SIZE PLANS HAVE BEEN PREPARED USING STANDARD ENGINEERING SCALES. REDUCED SIZED PLANS WILL NOT CONFORM TO STANDARD SCALES. IN MAKING MEASUREMENTS ON REDUCED PLANS, THE ABOVE SCALES MAY BE USED.

J.U.L.I.E.
JOINT UTILITY LOCATION INFORMATION FOR EXCAVATION
1-800-892-0123
OR 811

PROJECT ENGINEER : JAY EDWARDS (217)-785-0597
PROJECT MANAGER : JONATHAN COX (217)-782-1378

CONTRACT NO. 72M73

STATE OF ILLINOIS
DEPARTMENT OF TRANSPORTATION

SUBMITTED May 13 2021

[Signature] REGIONAL ENGINEER

June 25, 2021

[Signature] ENGINEER OF DESIGN AND ENVIRONMENT

June 25, 2021

[Signature] DIRECTOR OF HIGHWAYS PROJECT IMPLEMENTATION

PRINTED BY THE AUTHORITY
OF THE STATE OF ILLINOIS

HIGHWAY STANDARDS

STANDARD NO.	TITLE
000001-08	STANDARD SYMBOLS, ABBREVIATIONS & PATTERNS
630101-10	STRONG POST GUARDRAIL ATTACHED TO CULVERT
630111-01	WEAK POST GUARDRAIL ATTACHED TO CULVERT
643001-02	SAND MODULE IMPACT ATTENUATORS
664001-02	CHAIN LINK FENCE
665001-02	WOVEN WIRE FENCE
701001-02	OFF-ROAD OPERATIONS, 2L, 2W, MORE THAN 15' (4.5 M) AWAY
701006-05	OFF-ROAD OPERATIONS, 2L, 2W, 15' (4.5 M) TO 24" (600 MM) FROM PAVEMENT EDGE
701101-05	OFF-ROAD OPERATIONS, MULTILANE, 15' (4.5 M) TO 24" (600 MM) FROM PAVEMENT EDGE
701106-02	OFF-ROAD OPERATIONS, MULTILANE, MORE THAN 15' (4.5 M) AWAY
701201-05	LANE CLOSURE, 2L, 2W, DAY ONLY, FOR SPEEDS > 45 MPH
701301-04	LANE CLOSURE, 2L, 2W, SHORT TIME OPERATIONS
701400-10	APPROACH TO LANE CLOSURE, FREEWAY/EXPRESSWAY
701406-12	LANE CLOSURE, FREEWAY/EXPRESSWAY, DAY OPERATIONS ONLY
701411-09	LANE CLOSURE, MULTILANE, AT ENTRANCE OR EXIT RAMP, FOR SPEEDS > 45 MPH
701421-08	LANE CLOSURE, MULTILANE, DAY OPERATIONS ONLY, FOR SPEEDS > 45 MPH TO 55 MPH
701422-10	LANE CLOSURE, MULTILANE, FOR SPEEDS > 45 MPH TO 55 MPH
701426-09	LANE CLOSURE, MULTILANE, INTERMITTENT OR MOVING OPERATION, FOR SPEEDS > 45 MPH
701427-05	LANE CLOSURE, MULTILANE, INTERMITTENT OR MOVING OPERATION, FOR SPEEDS < 40 MPH
701428-01	TRAFFIC CONTROL SET UP AND REMOVAL FREEWAY/EXPRESSWAY
701456-05	PARTIAL EXIT RAMP CLOSURE FREEWAY/EXPRESSWAY
701501-06	URBAN LANE CLOSURE, 2L, 2W, UNDIVIDED
701502-09	URBAN LANE CLOSURE, 2L, 2W, WITH BIDIRECTIONAL LEFT TURN LANE
701601-09	URBAN LANE CLOSURE, MULTILANE, 1W OR 2W WITH NONTRAVERSABLE MEDIAN
701602-10	URBAN LANE CLOSURE, MULTILANE, 2W WITH BIDIRECTIONAL LEFT TURN LANE
701606-10	URBAN SINGLE LANE CLOSURE, MULTILANE, 2W WITH MOUNTABLE MEDIAN
701701-10	URBAN LANE CLOSURE, MULTILANE INTERSECTION
701901-08	TRAFFIC CONTROL DEVICES
725001-01	OBJECT AND TERMINAL MARKERS
782006-01	GUARDRAIL AND BARRIER WALL REFLECTOR MOUNTING DETAILS.
001006	DECIMAL OF AN INCH AND OF A FOOT
630001-12	STEEL PLATE BEAM GUARDRAIL
631011-10	TRAFFIC BARRIER TERMINAL, TYPE 2
631026-06	TRAFFIC BARRIER TERMINAL, TYPE 5
631031-17	TRAFFIC BARRIER TERMINAL, TYPE 6
636001-02	CABLE ROAD GUARD SINGLE STRAND

GENERAL NOTES

ALL DISTURBED AREAS CAUSED BY THE CONTRACTOR'S OPERATIONS SHALL BE GRADED AND SEEDED WITH CLASS 2 ROADSIDE MIXTURE AND FERTILIZED AS STATED IN SECTION 250 OF THE STANDARD SPECIFICATIONS. COST SHALL BE CONSIDERED INCLUDED IN THE UNIT COST OF THE WORK BEING PERFORMED.

REMOVAL OF DAMAGED IMPACT ATTENUATORS SHALL BE INCLUDED IN THE COST OF THE IMPACT ATTENUATOR BEING INSTALLED.

REMOVAL AND DISPOSAL OF DAMAGED FENCE SHALL BE INCLUDED IN THE COST OF THE FENCE BEING INSTALLED.

STATE OF ILLINOIS DEPARTMENT OF TRANSPORTATION DIVISION OF HIGHWAYS DISTRICT 6	
EXAMINED	May 5 20 21 <i>[Signature]</i> ENGINEER OF OPERATIONS
EXAMINED	April 28 20 21 <i>[Signature]</i> ENGINEER OF PROJECT IMPLEMENTATION
EXAMINED	May 3 20 21 <i>[Signature]</i> ENGINEER OF PROGRAM DEVELOPMENT

REV. - MS

MODEL: Default
 FILE NAME: P:\Igitarscom.dct\illinois.gov\PIVEDOT\Documents\DOT_Offices\District 6\Projects\0672M73\CADD\as\CAD\as\std\72M73-std-gennote.dgn

USER NAME = coxjw	DESIGNED -	REVISED -	STATE OF ILLINOIS DEPARTMENT OF TRANSPORTATION	GENERAL NOTES		F.A. RTE.	SECTION	COUNTY	TOTAL SHEETS	SHEET NO.		
DRAWN -	REVISED -	SCALE:		SHEET 1	OF 1	SHEETS	STA.	TO STA.	VAR	**	ILLINOIS	FED. AID PROJECT
PLOT SCALE = 100.0000' / in.	CHECKED -	REVISED +		VARIOUS 6 2 CONTRACT NO. 72M73								
PLOT DATE = 5/13/2021	DATE -	REVISED +		** D6 CABLE/GUARDRAIL REPAIR 2022								

CODE	ITEM	UNIT	TOTAL QUANTITY	0-02176-6002	6-00664-9978	0-01872-6001
				VARIOUS GR	MCHD	MED CBL BAR
				100% STATE	100% MCHD	100% STATE
				ROADWAY	ROADWAY	ROADWAY
				0021	0021	0021
				RURAL	RURAL	RURAL
63000001	STEEL PLATE BEAM GUARDRAIL, TYPE A, 6 FOOT POSTS	FOOT	450	300	150	
63000003	STEEL PLATE BEAM GUARDRAIL, TYPE A, 9 FOOT POSTS	FOOT	100	50	50	
63000030	STRONG POST GUARDRAIL ATTACHED TO CULVERT	FOOT	50	50		
63100045	TRAFFIC BARRIER TERMINAL, TYPE 2	EACH	3	2	1	
63100070	TRAFFIC BARRIER TERMINAL, TYPE 5	EACH	3	2	1	
63100085	TRAFFIC BARRIER TERMINAL, TYPE 6	EACH	3	2	1	
63100167	TRAFFIC BARRIER TERMINAL, TYPE 1 (SPECIAL) TANGENT	EACH	22	6	16	
63100169	TRAFFIC BARRIER TERMINAL, TYPE 1 (SPECIAL) FLARED	EACH	2	2		
63200310	GUARDRAIL REMOVAL	FOOT	1250	350	900	
64300450	IMPACT ATTENUATORS (NON-REDIRECTIVE), TEST LEVEL 3	EACH	1	1		
64401300	HIGH TENSION CABLE MEDIUM BARRIER TERMINALS	EACH	2		1	1
66400105	CHAIN LINK FENCE, 4'	FOOT	100	50	50	
66500105	WOVEN WIRE FENCE, 4'	FOOT	1300		1300	
67100100	MOBILIZATION	L SUM	1	0.3	0.6	0.1

FILE NAME =	USER NAME = spechtd	DESIGNED -	REVISED -	STATE OF ILLINOIS DEPARTMENT OF TRANSPORTATION	SUMMARY OF QUANTITIES			F.A. RTE.	SECTION	COUNTY	TOTAL SHEETS	SHEET NO.
pww\planroom\dot\illinois.gov\PIWIDOT\Documents\DOT Offices\District 6\Projects\1672M73\CADDData\CADs\DRAWN\1673-sta-500.dgn		CHECKED -	REVISED -					**			6	3
PLOT SCALE = 100,0000' / in.		DATE -	REVISED -		SCALE: SHEET 1 OF 3 SHEETS STA. TO STA.			CONTRACT NO.72M73				
Default	PLOT DATE = 7/3/2018							ILLINOIS FED. AID PROJECT				

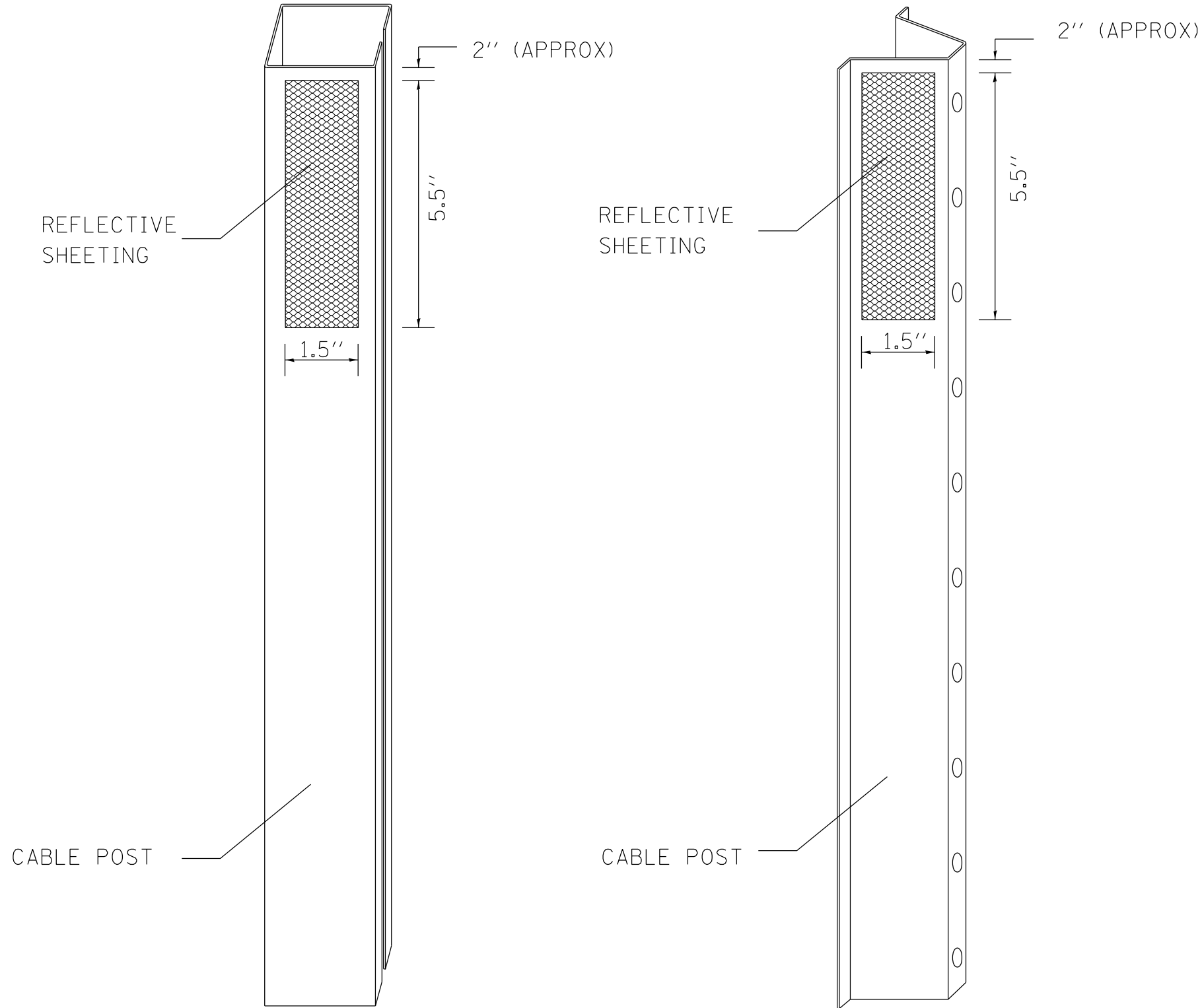
CODE	ITEM	UNIT	TOTAL QUANTITY	0-02176-6002	6-00664-9978	0-01872-6001
				VARIOUS GR 100% STATE	MCHD 100% MCHD	MED CBL BAR 100% STATE
				ROADWAY	ROADWAY	ROADWAY
				0021 RURAL	0021 RURAL	0021 RURAL
70100420	TRAFFIC CONTROL AND PROTECTION, STANDARD 701411	EACH	3	2	1	
72501000	TERMINAL MARKER - DIRECT APPLIED	EACH	40	25	15	
78200005	GUARDRAIL REFLECTORS, TYPE A	EACH	90	50	40	
X0325231	CABLE GUARD MARKER	EACH	200		100	100
X0325899	REPAIR HIGH TENSION CABLE (GIBRALTAR)	FOOT	20		10	10
X0325900	REPAIR HIGH TENSION BARRIER TERMINAL (GIBRALTAR)	EACH	5		3	2
X0325901	REPAIR POSTS (GIBRALTAR)	EACH	78		50	28
X0325902	REMOVE AND REPLACE POSTS (GIBRALTAR)	EACH	177		150	27
X0327490	REPAIR HIGH TENSION CABLE (NU-CABLE)	FOOT	20		10	10
X0327491	REPAIR POSTS (NU-CABLE)	EACH	20		10	10
X0327492	REMOVE AND REPLACE POSTS (NU-CABLE)	EACH	302		222	80
X0327493	REPAIR HIGH TENSION BARRIER TERMINAL (NU-CABLE)	EACH	2		1	1
X6300155	STEEL PLATE BEAM GUARDRAIL, ATTACHED TO STRUCTURES (SPECIAL)	FOOT	75	50	25	
X6431220	REMOVE AND REPLACE IMPACT ATTENUATOR SAND MODULE	EACH	57	22	35	

FILE NAME =	USER NAME = spechtd	DESIGNED -	REVISED -	STATE OF ILLINOIS DEPARTMENT OF TRANSPORTATION	SUMMARY OF QUANTITIES			F.A. RTE.	SECTION	COUNTY	TOTAL SHEETS	SHEET NO.
pww\planroom\dot\illinois.gov\PIWIDOT\Documents\DOT Offices\District 6\Projects\1672M73\CADDData\CADs\DRAWN\173-slat-S00.dgn		CHECKED -	REVISED -					*VAR	**		VARIOUS	6
Default	PLOT SCALE = 100,0000' / in.	DATE -	REVISED -		SCALE:	SHEET 2	OF 3	SHEETS	STA.	TO STA.	ILLINOIS	FED. AID PROJECT
	PLOT DATE = 7/3/2018										CONTRACT NO. 72M73	

CODE	ITEM	UNIT	TOTAL QUANTITY	0-02176-6002	6-00664-9978	0-01872-6001
				VARIOUS GR	MCHD	MED CBL BAR
				100% STATE	100% MCHD	100% STATE
				ROADWAY	ROADWAY	ROADWAY
				0021	0021	0021
				RURAL	RURAL	RURAL
X7011834	TRAFFIC CONTROL AND PROTECTION, CALL OUT WORK	EACH	72	22	50	
X7011836	TRAFFIC CONTROL AND PROTECTION, FREEWAY/EXPRESSWAY, CALL OUT WORK	EACH	54	22	24	8
Z0008759	CALL OUT	EACH	9	6	2	1
Z0008760	EMERGENCY WORK CALL OUT	EACH	63	11	50	2
Z0052000	REPAIR STEEL PLATE BEAM GUARDRAIL, TYPE A	FOOT	4300	2300	2000	
Z0052410	REPAIR TRAFFIC BARRIER TERMINAL, TYPE 1 SPECIAL (TANGENT)	EACH	90	40	50	
Z0052415	REPAIR TRAFFIC BARRIER TERMINAL, TYPE 1 SPECIAL (FLARED)	EACH	4	2	2	
Z0052600	REPAIR TRAFFIC BARRIER TERMINAL, TYPE 2	EACH	4	2	2	
Z0053000	REPAIR TRAFFIC BARRIER TERMINAL, TYPE 5	EACH	4	2	2	
Z0053200	REPAIR TRAFFIC BARRIER TERMINAL, TYPE 6	EACH	4	2	2	
X6330801	GUARDRAIL POSTS REPAIR	EACH	50		30	20

REV. - MS

FILE NAME =	USER NAME = spechttd	DESIGNED -	REVISED -	STATE OF ILLINOIS DEPARTMENT OF TRANSPORTATION	SUMMARY OF QUANTITIES			F.A.* RTE.	SECTION	COUNTY	TOTAL SHEETS	SHEET NO.
pw:\planroom.dot.illinois.gov\PWIDOT\Documents\DOT Offices\District 6\Projects\0672M73\CADData\CADs\0672M73-stb-SOQ.dgn		CHECKED -	REVISED -					**	VARIOUS	6	5	
PLOT SCALE = 100.0000' / in.		DATE -	REVISED +		SCALE:	SHEET 3 OF 3 SHEETS	STA.	TO STA.	ILLINOIS	FED. AID PROJECT	CONTRACT NO. 72M73	
Default	PLOT DATE = 7/3/2018		REVISED +									



NOTES:

MATERIAL: THE MATERIAL SHALL BE IN ACCORDANCE WITH SECTION 1090 AND 1091 OF THE STANDARD SPECIFICATIONS.

CONSTRUCTION REQUIREMENTS: THE REFLECTIVE SHEETING SHALL BE INSTALLED DIRECTLY ON THE CABLE POSTS. THE REFLECTIVE SHEETING SHALL BE INSTALLED AS SHOWN IN THE PLANS, ON EVERY OTHER POST (IN ORDER TO PROVIDE A SPACING OF 40'). THE SURFACE OF THE POST SHALL BE CLEANED OF ALL CONTAMINANTS PRIOR TO THE INSTALLATION OF THE REFLECTIVE SHEETING. THE SURFACE SHALL BE CLEANED USING A 5-8 PERCENT PHOSPHORIC ACID SOLUTION AND RINSED WITH CLEAN WATER OR AS RECOMMENDED BY THE MANUFACTURER OF THE REFLECTIVE SHEETING AND AS APPROVED BY THE ENGINEER.

BASIS OF PAYMENT: THIS WORK WILL BE PAID FOR AT THE CONTRACT UNIT PRICE EACH FOR CABLE GUARD MARKER.

MODEL: Default
 FILE NAME: p:\pubroom\dot.illinois.gov\PIWDOT\Documents\IDOT_Offices\District_6\Projects\ID672M73\CADD\Drawings\Cable_Guard_MKR.dgn

USER NAME = coxjw	DESIGNED -	REVISED -	STATE OF ILLINOIS DEPARTMENT OF TRANSPORTATION	CABLE GUARD MARKER DETAIL		F.A. RTE.	SECTION	COUNTY	TOTAL SHEETS	SHEET NO.
PLOT SCALE = 100,0000 ' / in.	DRAWN -	REVISED -				**			6	6
PLOT DATE = 5/13/2021	CHECKED -	REVISED -		SCALE: SHEET 1 OF 1 SHEETS STA. TO STA.		CONTRACT NO. 72M73				
	DATE -	REVISED -		ILLINOIS FED. AID PROJECT						