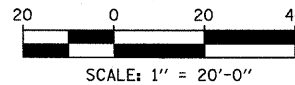
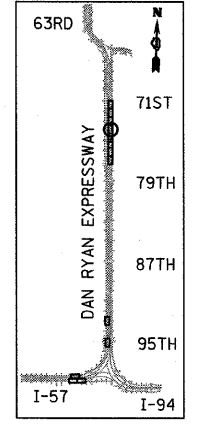
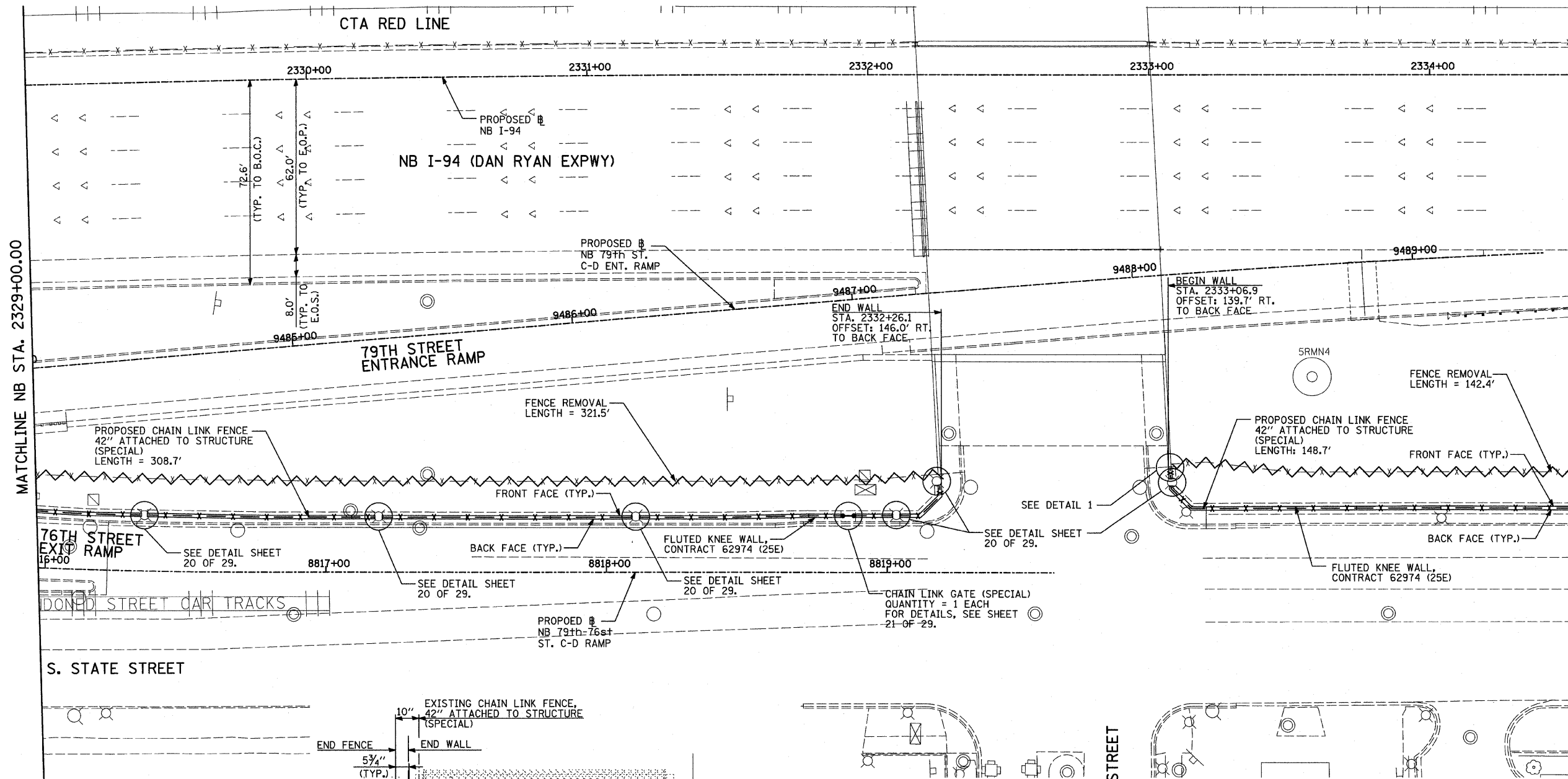
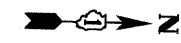


F.A.I. RTE.	SECTION	COUNTY	TOTAL SHEETS	SHEET NO.
94	2005-030 I	COOK	29	17
STA. 2212+06.2		TO STA. 2338+58.7		
FED. ROAD DIST. NO.	ILLINOIS	FED. AID PROJECT		

60A01



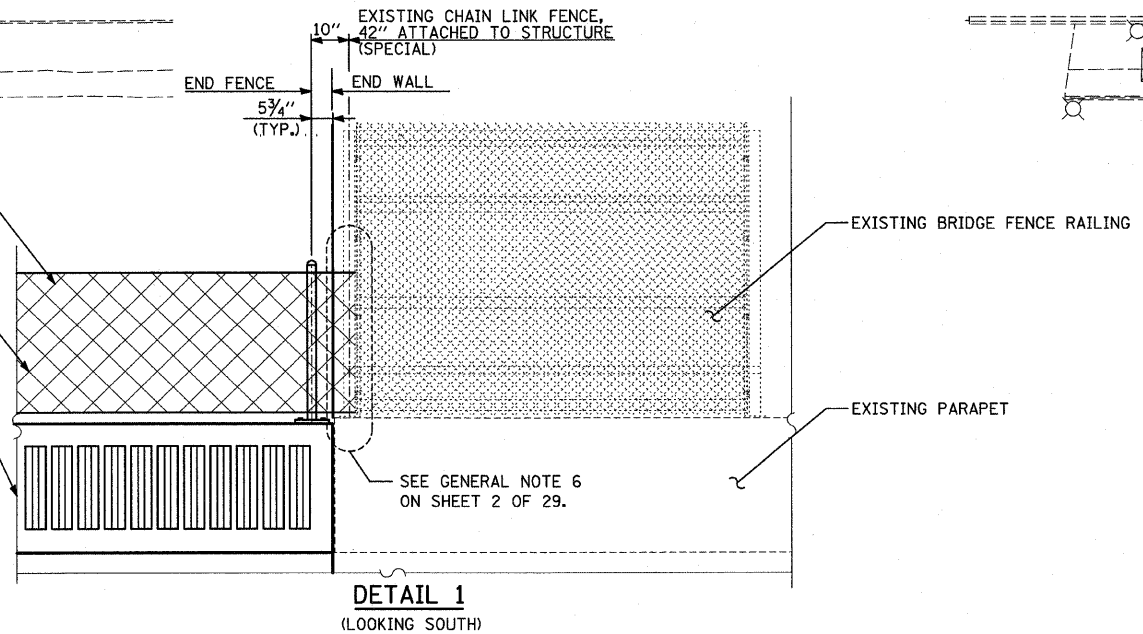
LEGEND:
 FENCE REMOVAL

NOTES:
 1. FOR CHAIN LINK FENCE, 42" ATTACHED TO STRUCTURE (SPECIAL), SEE SHEET 19 OF 29.

REVISIONS	
NAME	DATE

ILLINOIS DEPARTMENT OF TRANSPORTATION
 F.A.I. 94 (DAN RYAN EXPRESSWAY)
 PROPOSED PLAN
 NB I-94 (DAN RYAN EXPRESSWAY)
 STA. 2329+00.00 TO STA. 2334+50.00
 CONTRACT 25E LOCATION
 SCALE: 1"=20'
 DATE: FEBRUARY 13, 2009
 DRAWN BY: MAF
 CHECKED BY: TGB, MI

TYLIN INTERNATIONAL



DETAIL 1
(LOOKING SOUTH)