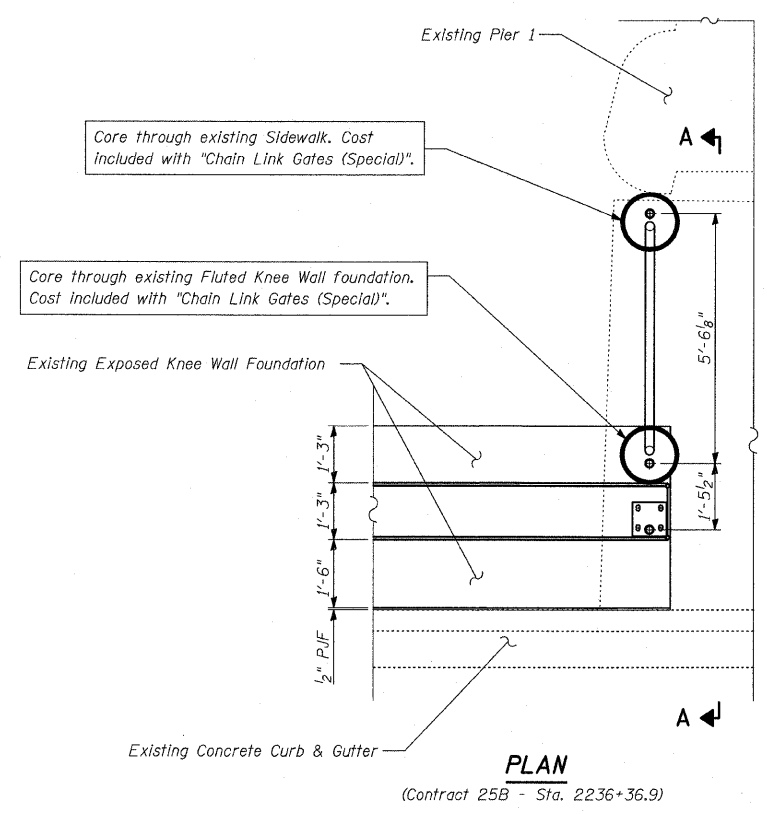


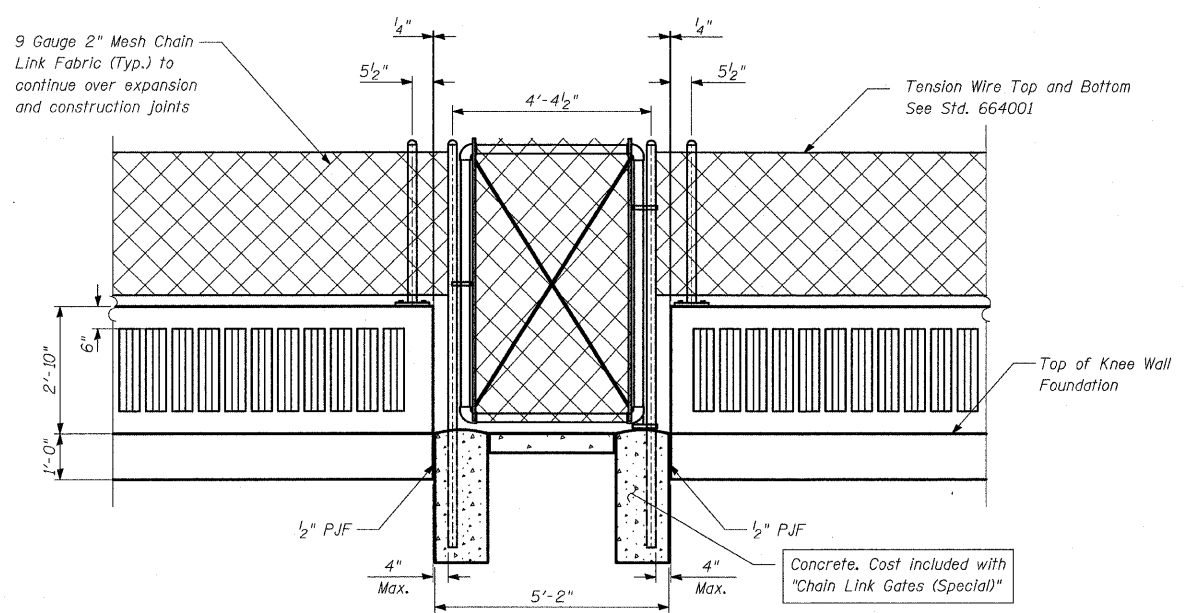
PLAN - TYPICAL CHAIN LINK GATE (SPECIAL)

- (Contract 25B - Sta. 2214+70.5)
- (Contract 25B - Sta. 2233+61.5)
- (Contract 25B - Sta. 2242+62.1)
- (Contract 25D - Sta. 2268+69.3)
- (Contract 25D - Sta. 2280+98.6)
- (Contract 25D - Sta. 2286+97.9)
- (Contract 25E - Sta. 2331+91.7)
- (Contract 25E - Sta. 2336+11.2)



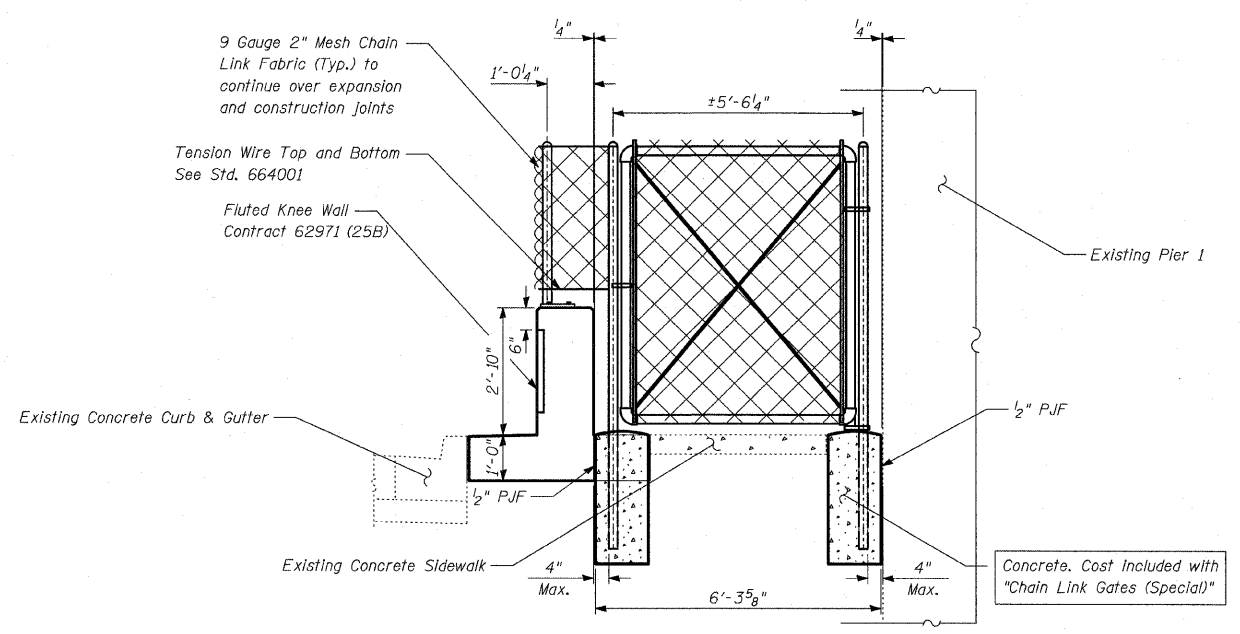
PLAN

(Contract 25B - Sta. 2236+36.9)



BACK FACE ELEVATION - TYPICAL CHAIN LINK GATE (SPECIAL)

- (Contract 25B - Sta. 2214+70.5)
- (Contract 25B - Sta. 2233+61.5)
- (Contract 25B - Sta. 2242+62.1)
- (Contract 25D - Sta. 2268+69.3)
- (Contract 25D - Sta. 2280+98.6)
- (Contract 25D - Sta. 2286+97.9)
- (Contract 25E - Sta. 2331+91.7)
- (Contract 25E - Sta. 2336+11.2)



ELEVATION VIEW A-A

(Contract 25B - Sta. 2236+36.9)

BILL OF MATERIAL

LOCATION	ITEM	UNIT	TOTAL
25B	Chain Link Gates (Special)	EACH	4
25C	Chain Link Gates (Special)	EACH	0
25D	Chain Link Gates (Special)	EACH	3
25E	Chain Link Gates (Special)	EACH	2
	Total	EACH	9

REVISIONS	
NAME	DATE

ILLINOIS DEPARTMENT OF TRANSPORTATION
F.A.I. 94 (DAN RYAN EXPRESSWAY)
CHAIN LINK GATE (SPECIAL) DETAILS

S.N. _____ DESIGNED BY: MAF
SCALE: N.T.S. DRAWN BY: MAF
DATE: FEBRUARY 13, 2009 CHECKED BY: MI