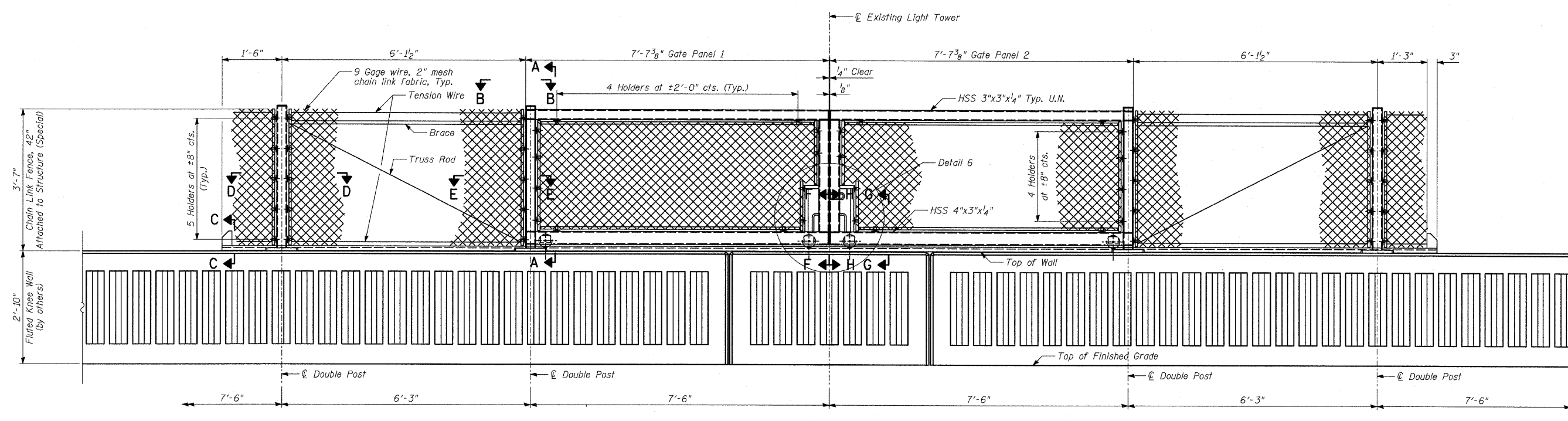


**BACK FACE ELEVATION - GATE IN OPEN POSITION**



**BACK FACE ELEVATION - GATE IN CLOSED POSITION**

- NOTES:**
1. For Notes, see Sheet 22 of 29.
  2. For Sections A-A, B-B, D-D & E-E, see Sheet 24 of 29.
  3. For Sections C-C, F-F, G-G, H-H, J-J and Details 4, 5, 6 & 7, see Sheet 25 of 29.

REVISIONS	
NAME	DATE

ILLINOIS DEPARTMENT OF TRANSPORTATION  
**F.A.I. 94 (DAN RYAN EXPRESSWAY)**  
**CHAIN LINK GATE ASSEMBLY (SPECIAL),  
 GATE ELEVATIONS**

S.N. DESIGNED BY: MAF  
 SCALE: N.T.S. DRAWN BY: MAF  
 DATE: FEBRUARY 13, 2009 CHECKED BY: MI