

**INDEX OF SHEETS**

FOR INDEX OF SHEETS, SEE SHEET NO. 2

DAN RYAN EXPRESSWAY:	ADT (2010)	DESIGN SPEED	POSTED SPEED
SB I-94 (DAN RYAN)	140,500	60 MPH	55 MPH
SB 75TH STREET C-D EXIT RAMP	7,985	45 MPH	40 MPH
SB 76TH STREET C-D ENTRANCE RAMP	7,940	45 MPH	40 MPH
SB 79TH STREET C-D EXIT RAMP	7,205	45 MPH	40 MPH
SB 79TH STREET C-D ENTRANCE RAMP	15,300	45 MPH	40 MPH
SB 83RD STREET C-D EXIT RAMP	6,800	45 MPH	40 MPH
SB 87TH STREET EXIT RAMP	12,600	45 MPH	40 MPH
SB 87TH STREET ENTRANCE RAMP	13,400	45 MPH	40 MPH
SB 95TH STREET EXIT RAMP	11,900	45 MPH	40 MPH

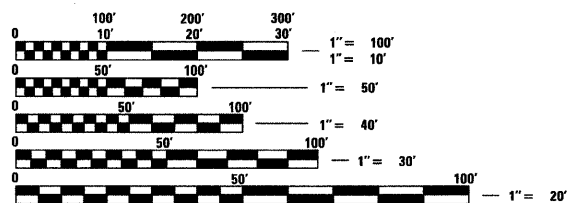
**MAJOR CROSS STREETS AND FRONTAGE ROADS:**

	ADT	POSTED SPEED
75TH STREET	17,700	30 MPH
76TH STREET	12,000	30 MPH
79TH STREET	19,400	30 MPH
83RD STREET	13,700	30 MPH
87TH STREET	24,900	30 MPH
S. LAFAYETTE AVENUE	6,800	30 MPH

**DESCRIPTION OF PROJECT**

INSTALLATION OF FENCING ON FLUTED KNEE WALLS AND RECONSTRUCTED PARAPETS AND INSTALLATION OF GATES LOCATED WITHIN THE PROJECT LIMITS.

PROJECT LOCATED IN THE CITY OF CHICAGO



FULL SIZE PLANS HAVE BEEN PREPARED USING STANDARD ENGINEERING SCALES; REDUCED SIZED PLANS WILL NOT CONFORM TO STANDARD SCALES. IN MAKING MEASUREMENTS ON REDUCED PLANS, THE ABOVE SCALES MAY BE USED

DIGGER:  
CHICAGO UTILITY ALERT NETWORK  
(312) 744-7000

CTA CONTACT:  
DAVID HEARD,  
MANAGER, CONSTRUCTION  
MANAGEMENT OVERSIGHT  
(312) 681-3862

**CONTRACT NO. 60A02**

STATE OF ILLINOIS  
DEPARTMENT OF TRANSPORTATION  
DIVISION OF HIGHWAYS

**PROPOSED HIGHWAY PLANS**

F.A.I. ROUTE 94 (DAN RYAN EXPRESSWAY)

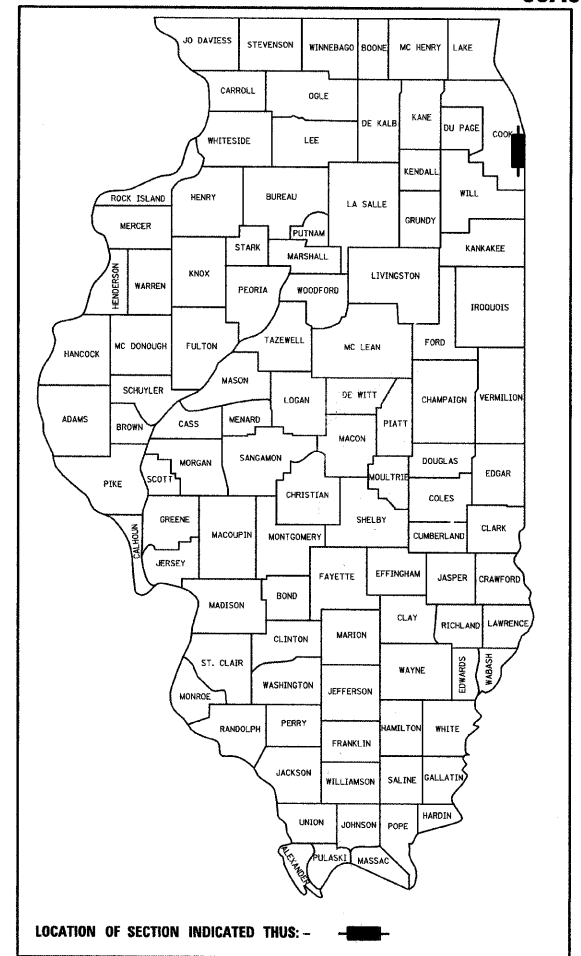
SECTION 2005-031 I

INSTALLATION OF FENCING AND GATES ON FLUTED KNEE WALLS  
ALONG LAFAYETTE AVENUE FROM 75TH STREET TO 94TH STREET

COOK COUNTY  
C-91-260-05

F.A.I. RTE.	SECTION	COUNTY	TOTAL SHEETS	SHEET NO.
94	2005-031 I	COOK	29	1

FED. ROAD DIST. NO. ILLINOIS FED. AID PROJECT  
D-91-260-05 60A02



STATE OF ILLINOIS  
DEPARTMENT OF TRANSPORTATION  
DIVISION OF HIGHWAYS

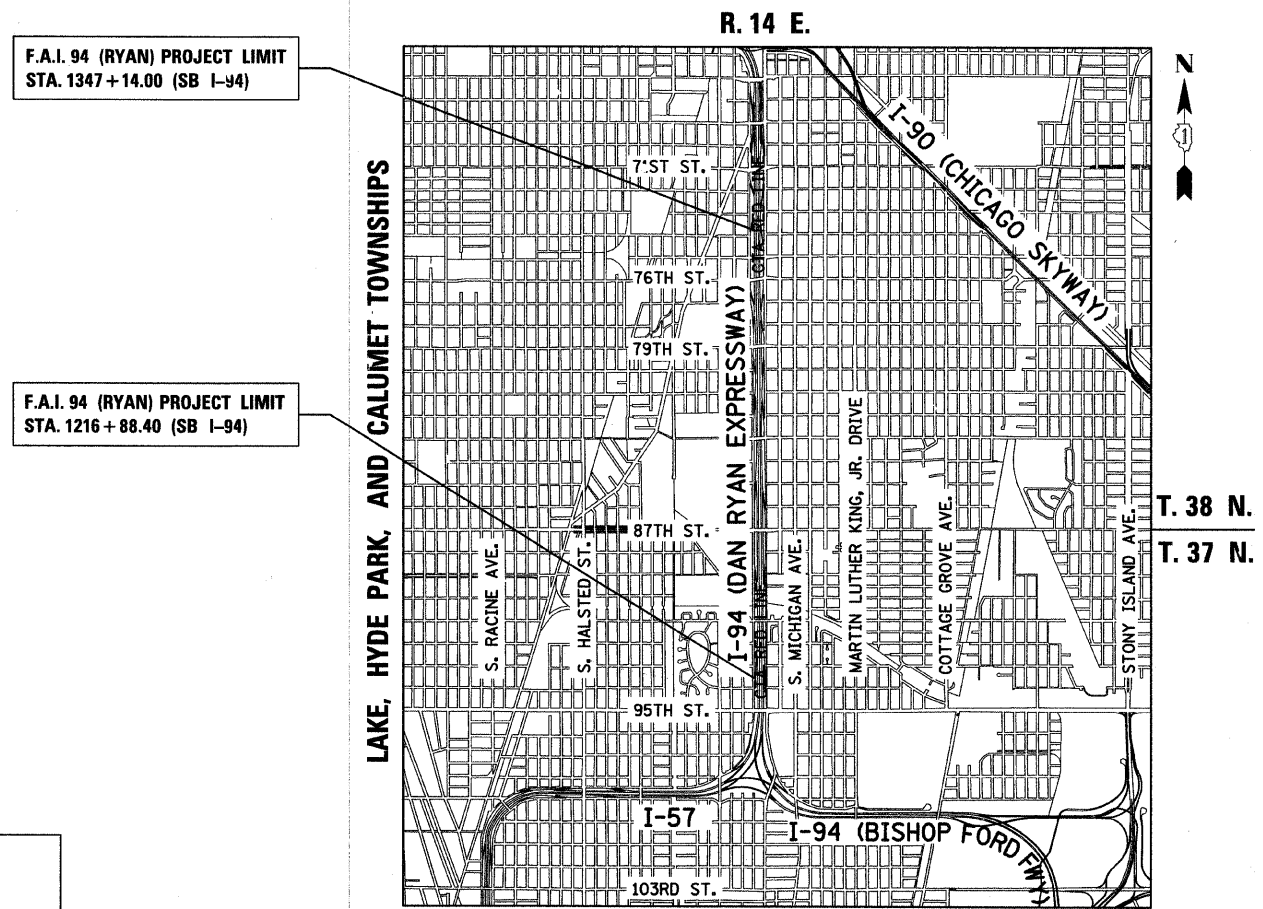
SUBMITTED FEBRUARY 11, 2009

Diana M. O'Keefe DEPUTY DIRECTOR OF HIGHWAYS, REGION ENGINEER  
June 26, 2009

Charles J. Ingersoll ENGINEER OF DESIGN AND ENVIRONMENT  
June 26, 2009

Christie M. Reed DIRECTOR OF HIGHWAYS, CHIEF ENGINEER

**CONTRACT 34**



LOCATION MAP

0 1/2 MILE 1 MILE  
GROSS LENGTH OF PROJECT = 13,025.60 FT. = 2.47 MI.  
MAP SCALE: 1" = 1/2 MILE  
NET LENGTH OF PROJECT = 13,025.60 FT. = 2.47 MI.

Signed Dean A. Kiesel  
32957 REGISTERED PROFESSIONAL ENGINEER OF ILLINOIS  
Date FEBRUARY 10, 2009  
Expires 11-30-2008

**TYLIN INTERNATIONAL**  
PRINTED BY THE AUTHORITY OF THE STATE OF ILLINOIS

DISTRICT ONE DESIGN / PROJECT MANAGER:  
BRIAN KUTTAB (847) 705 - 4431