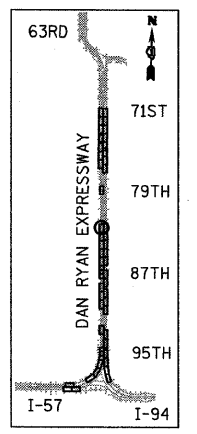
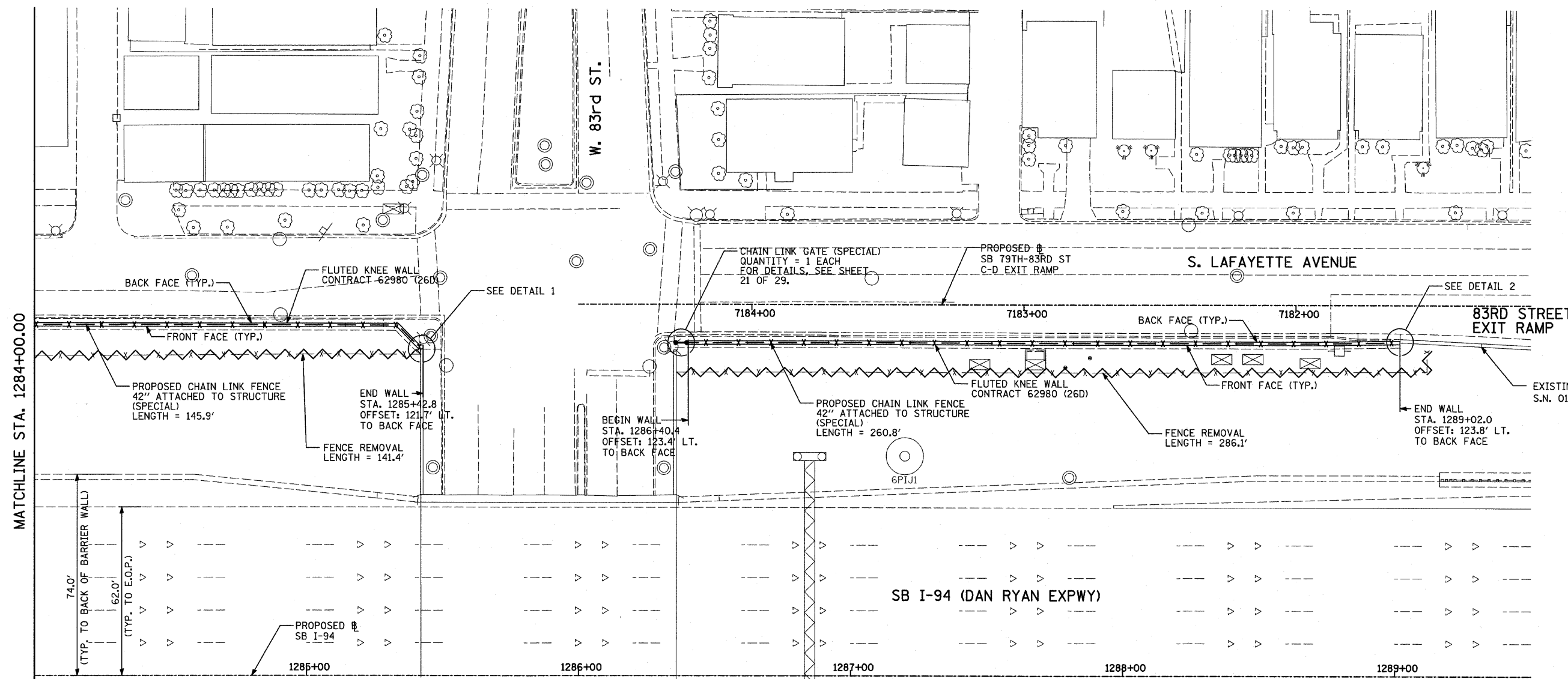
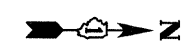
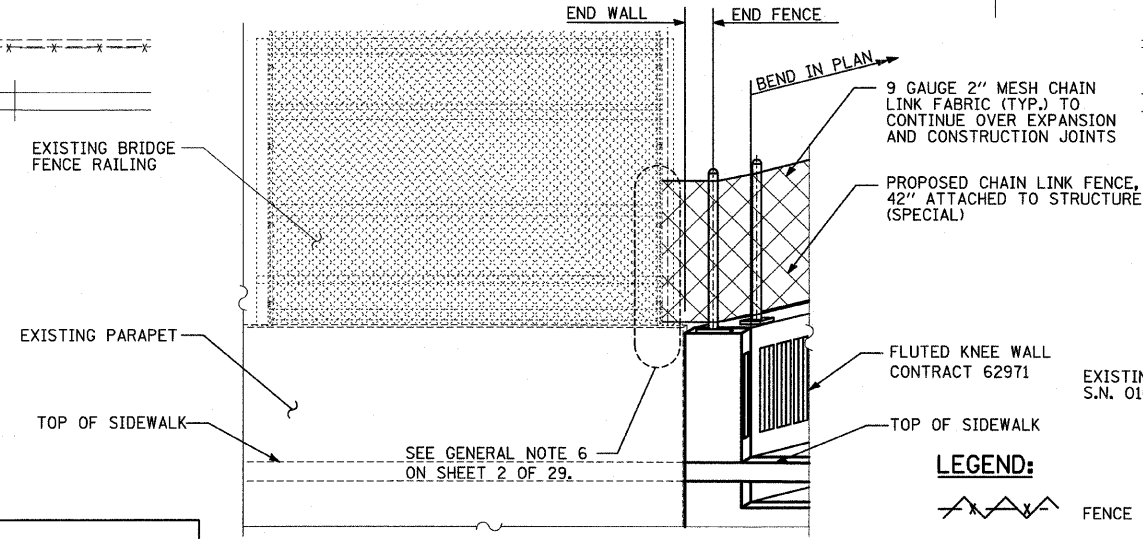
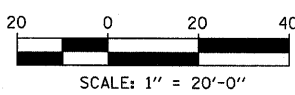


F.A.I. RTE.	SECTION	COUNTY	TOTAL SHEETS	SHEET NO.
94	2005-031 I	COOK	29	13
STA. 1216+88.4		TO STA. 1347+14.0		
FED. ROAD DIST. NO.		ILLINOIS FED. AID PROJECT		

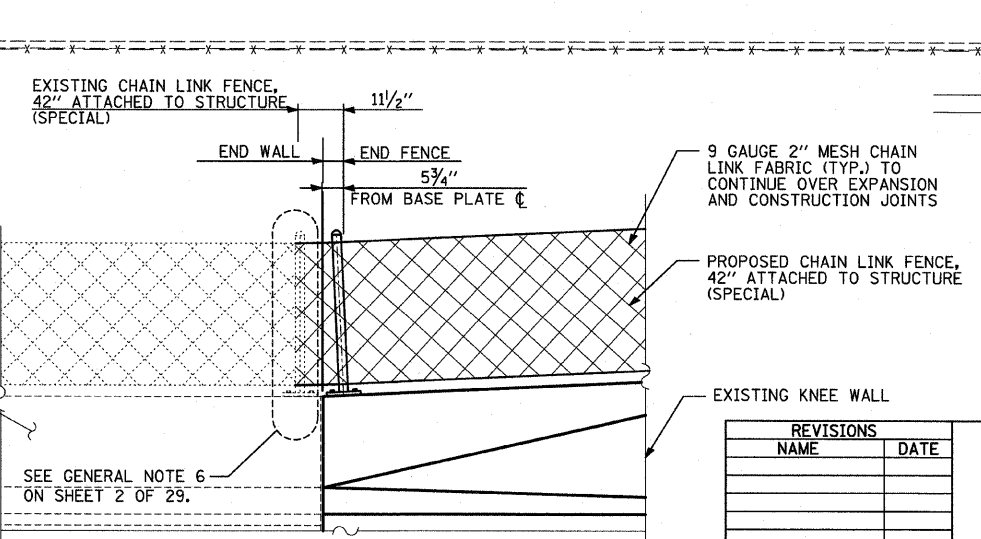
60A02



LOCATION MAP



DETAIL 1
(LOOKING SOUTH)



DETAIL 2
(LOOKING EAST)

LEGEND:

—○—○—○— FENCE REMOVAL

NOTES:

- FOR CHAIN LINK FENCE, 42" ATTACHED TO STRUCTURE (SPECIAL), SEE SHEET 19 OF 29.

REVISIONS	
NAME	DATE

ILLINOIS DEPARTMENT OF TRANSPORTATION
 F.A.I. 94 (DAN RYAN EXPRESSWAY)
 PROPOSED PLAN
 SB I-94 (DAN RYAN EXPRESSWAY)
 STA. 1284+00.00 TO STA. 1289+50.00
 CONTRACT 26D LOCATION

SCALE: 1"=20'
 DATE: FEBRUARY 13, 2009

DRAWN BY: MAF
 CHECKED BY: TGB, MI

TYLIN INTERNATIONAL

3/19/2009 10:35:51 AM