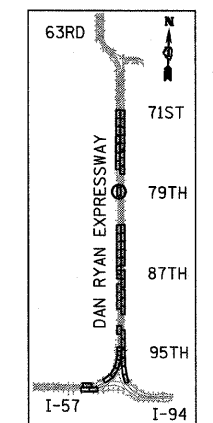
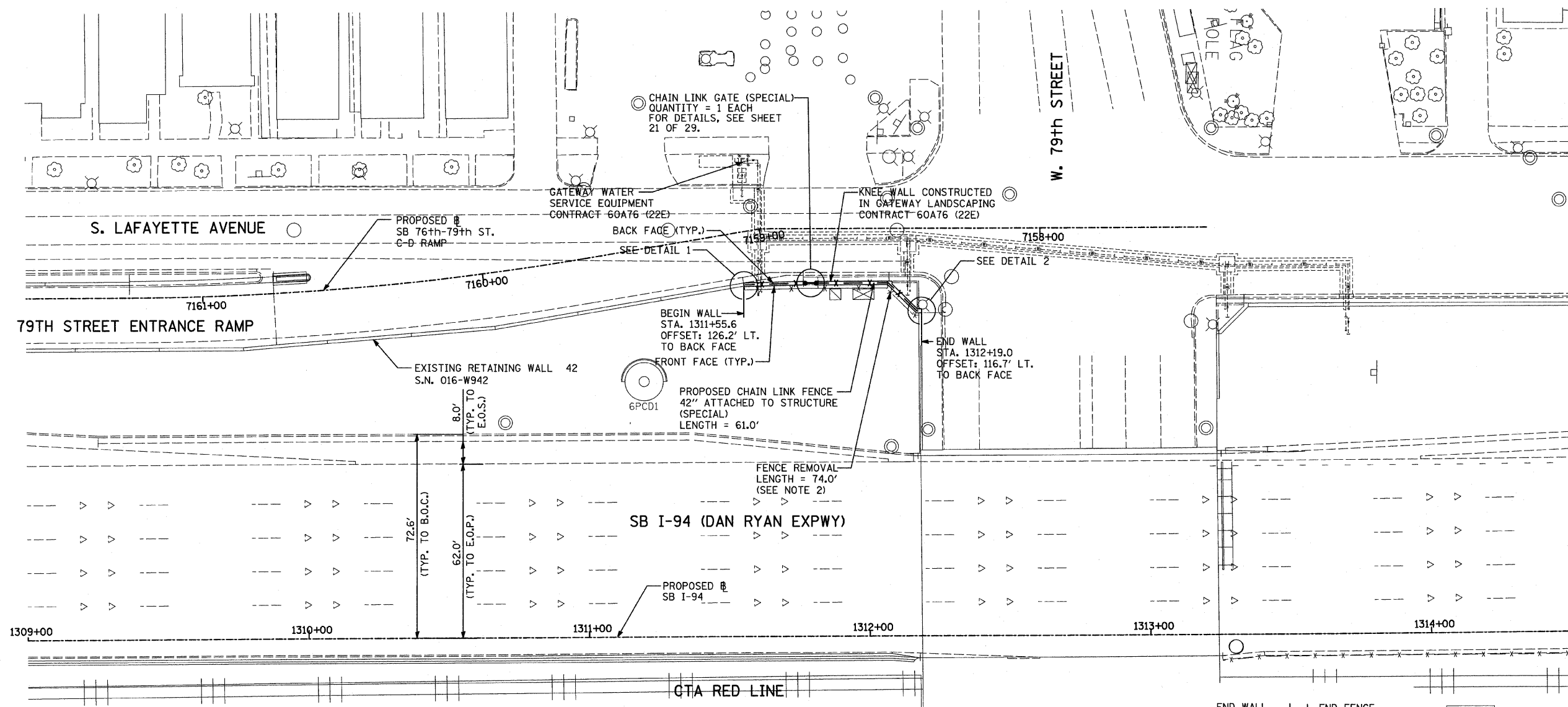
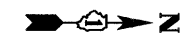
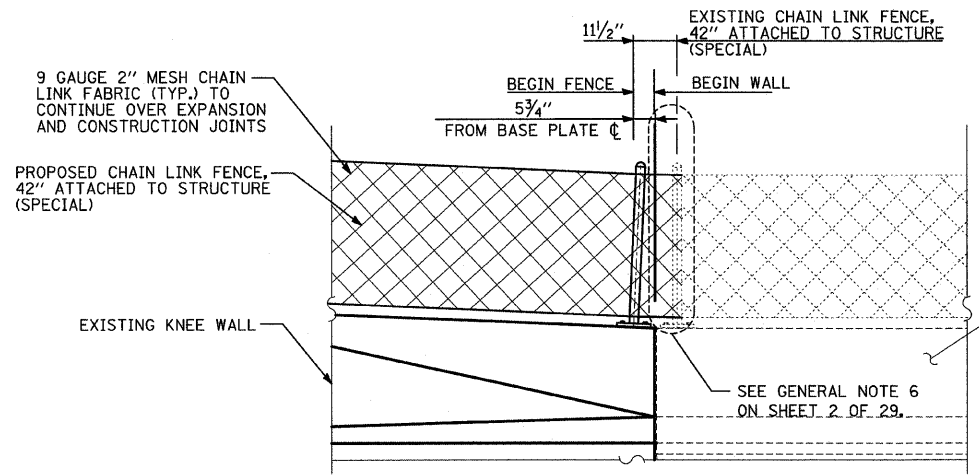
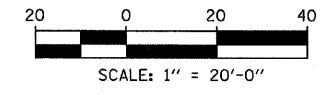


F.A.I. RTE.	SECTION	COUNTY	TOTAL SHEETS	SHEET NO.
94	2005-031 I	COOK	29	14
STA. 1216+88.4		TO STA. 1347+14.0		
FED. ROAD DIST. NO.	ILLINOIS	FED. AID PROJECT		

60A02



LOCATION MAP



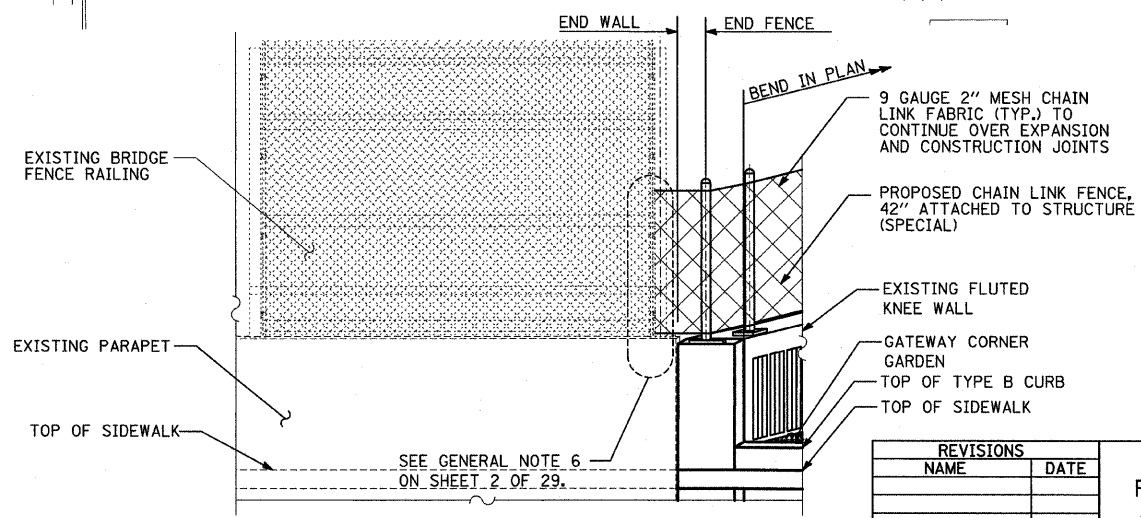
DETAIL 1
(LOOKING EAST)

LEGEND:



NOTES:

- FOR CHAIN LINK FENCE, 42" ATTACHED TO STRUCTURE (SPECIAL), SEE SHEET 19 OF 29.
- REMOVAL PATTERN FOR EXISTING FENCE NOT SHOWN FOR CLARITY.



DETAIL 2
(LOOKING SOUTH)

REVISIONS	
NAME	DATE

ILLINOIS DEPARTMENT OF TRANSPORTATION
F.A.I. 94 (DAN RYAN EXPRESSWAY) PROPOSED PLAN
SB I-94 (DAN RYAN EXPRESSWAY)
STA. 1309+00.00 TO STA. 1314+50.00
CONTRACT 22E LOCATION

SCALE: 1"=20'
DATE: FEBRUARY 13, 2009

DRAWN BY: MAF
CHECKED BY: TGB, MI

TYLIN INTERNATIONAL

3/19/2008 10:35:52 AM