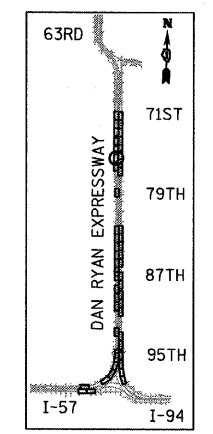
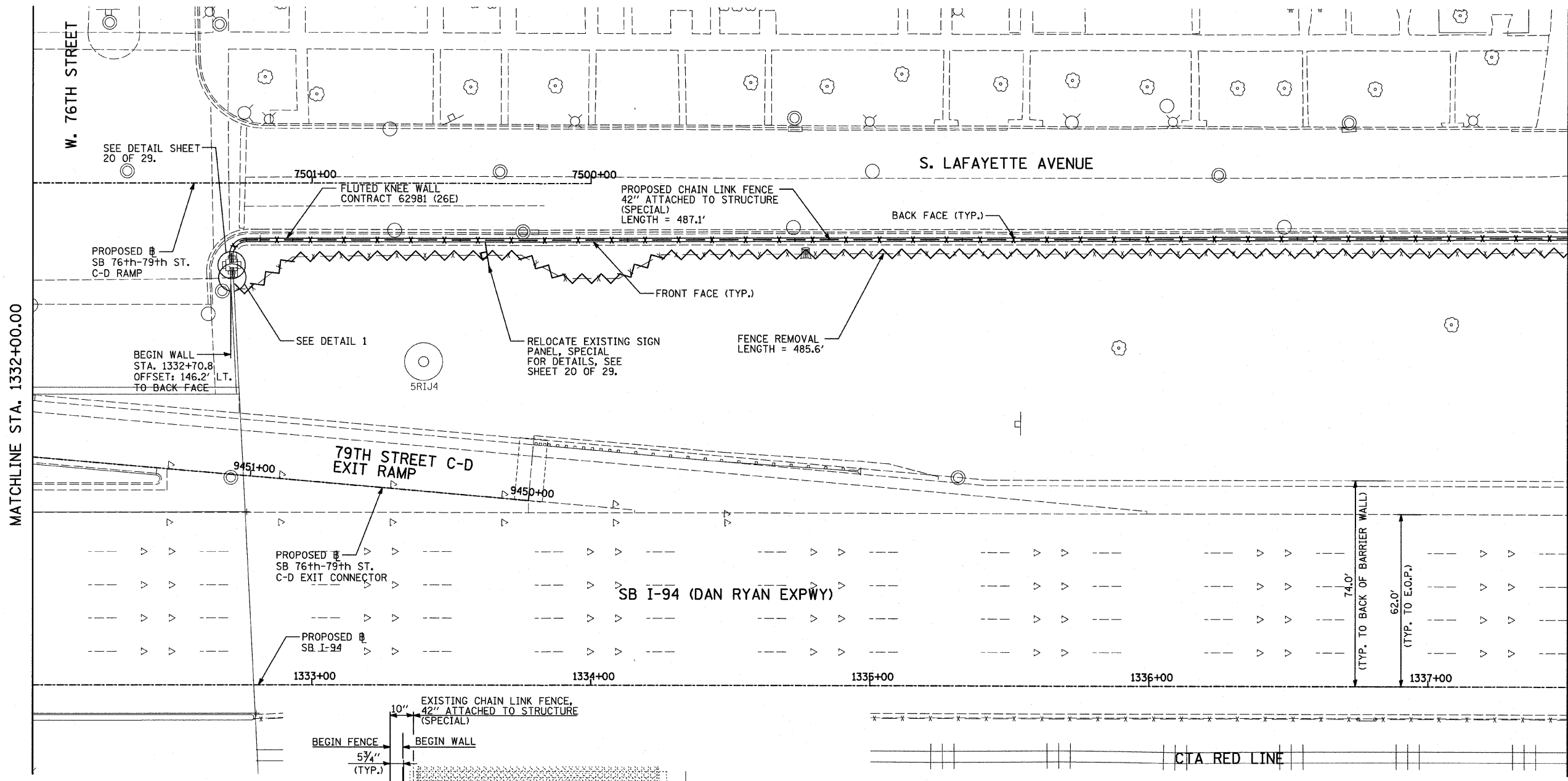
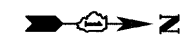
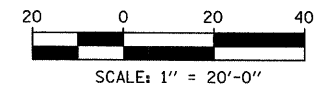


| | | | | |
|---------------------|------------|-------------------|--------------|-----------|
| F.A.I. RTE. | SECTION | COUNTY | TOTAL SHEETS | SHEET NO. |
| 94 | 2005-031 I | COOK | 29 | 16 |
| STA. 1216+88.4 | | TO STA. 1347+14.0 | | |
| FED. ROAD DIST. NO. | ILLINOIS | FED. AID PROJECT | | |

60A02

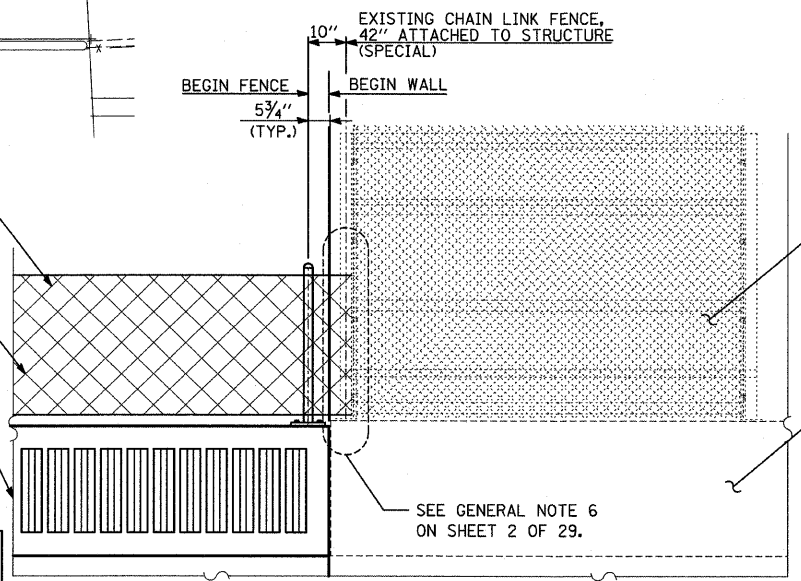


LOCATION MAP



LEGEND:
 FENCE REMOVAL

NOTES:
 1. FOR CHAIN LINK FENCE, 42" ATTACHED TO STRUCTURE (SPECIAL), SEE SHEET 19 OF 29.



DETAIL 1
(LOOKING NORTH)

TYLIN INTERNATIONAL

| REVISIONS | |
|-----------|------|
| NAME | DATE |
| | |
| | |
| | |
| | |
| | |
| | |
| | |

ILLINOIS DEPARTMENT OF TRANSPORTATION
 F.A.I. 94 (DAN RYAN EXPRESSWAY)
 PROPOSED PLAN
 SB I-94 (DAN RYAN EXPRESSWAY)
 STA. 1332+00.00 TO STA. 1337+50.00
 CONTRACT 26E LOCATION

SCALE: 1"=20'
 DATE: FEBRUARY 13, 2009

DRAWN BY: MAF
 CHECKED BY: TGB, MI

PA:02-313-Road-C-34-PP-26E-S102-23-0107
 3/19/2009 12:19:13 PM