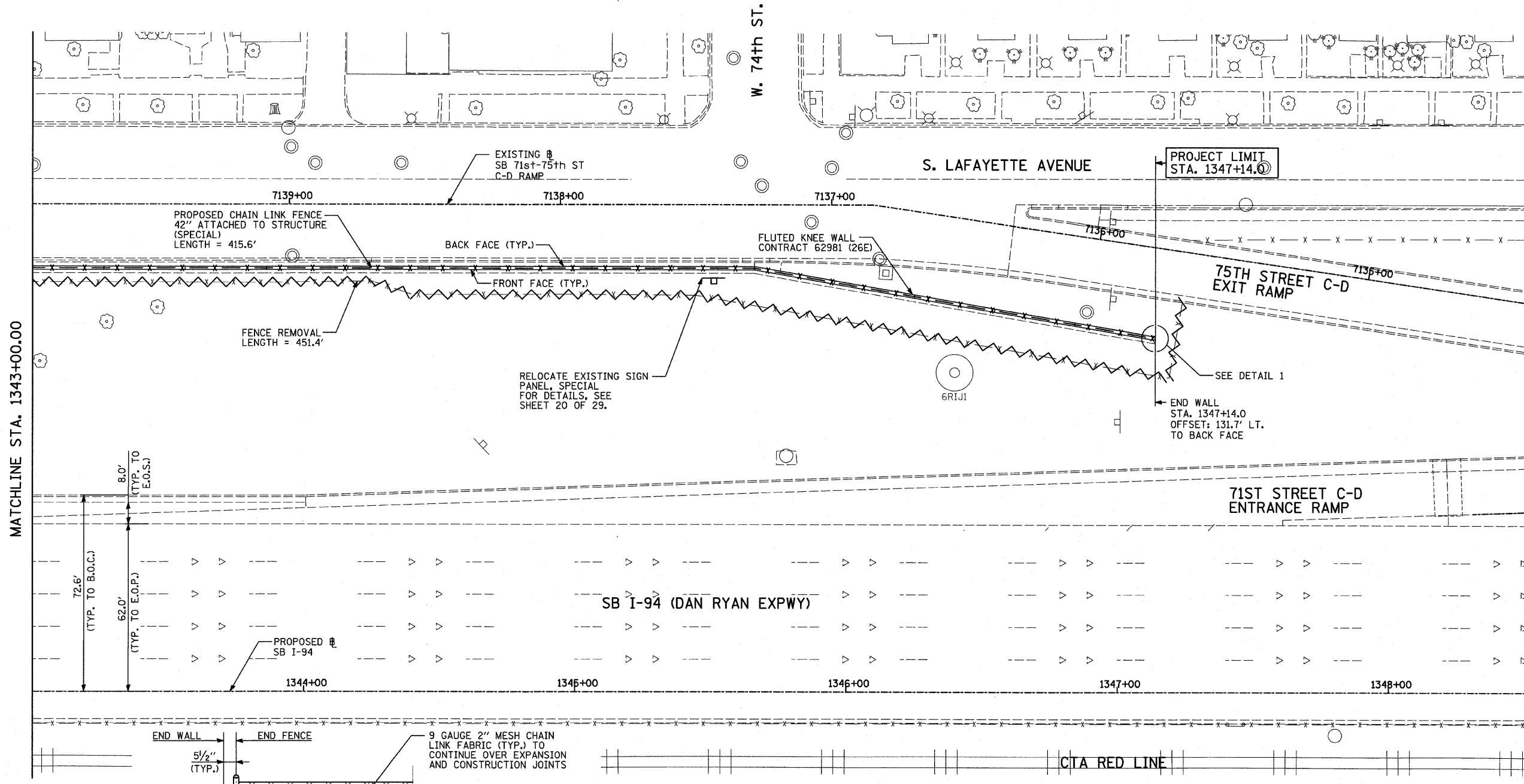
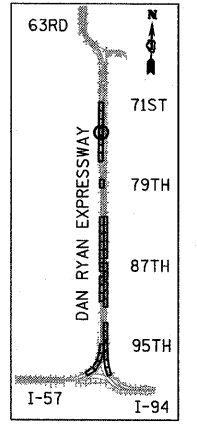


F.A.I. RTE.	SECTION	COUNTY	TOTAL SHEETS	SHEET NO.
94	2005-031 I	COOK	29	18
STA. 1216+88.4		TO STA. 1347+14.0		
FED. ROAD DIST. NO.	ILLINOIS	FED. AID PROJECT	60A02	

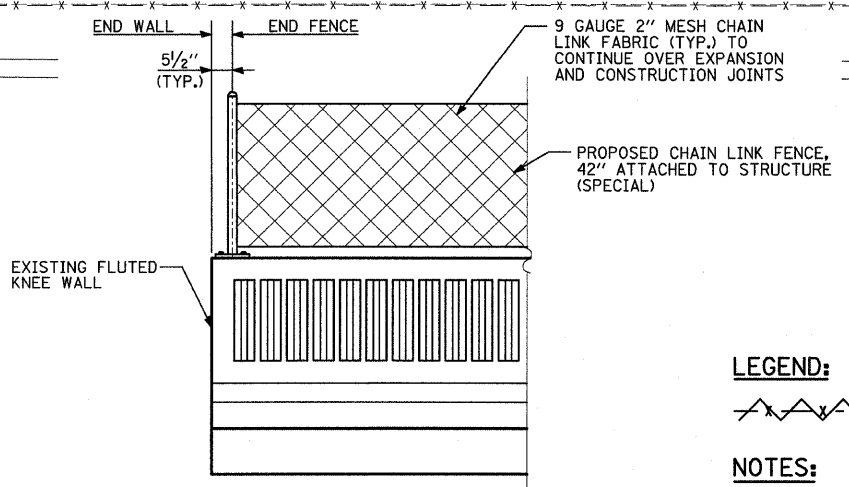
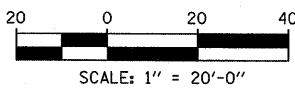
PA0237-3/road/03/4/09/26/043.dwg



MATCHLINE STA. 1343+00.00



LOCATION MAP



DETAIL 1
(LOOKING EAST)

LEGEND:
 FENCE REMOVAL

NOTES:
 1. FOR CHAIN LINK FENCE, 42" ATTACHED TO STRUCTURE (SPECIAL), SEE SHEET 19 OF 29.

TYLIN INTERNATIONAL

REVISIONS	
NAME	DATE

ILLINOIS DEPARTMENT OF TRANSPORTATION
 F.A.I. 94 (DAN RYAN EXPRESSWAY)
 PROPOSED PLAN
 SB I-94 (DAN RYAN EXPRESSWAY)
 STA. 1343+00.00 TO STA. 1348+50.00
 CONTRACT 26E LOCATION

SCALE: 1"=20'
 DATE: FEBRUARY 13, 2009

DRAWN BY: MAF
 CHECKED BY: TGB, MI

3/19/2009 10:36:05 AM