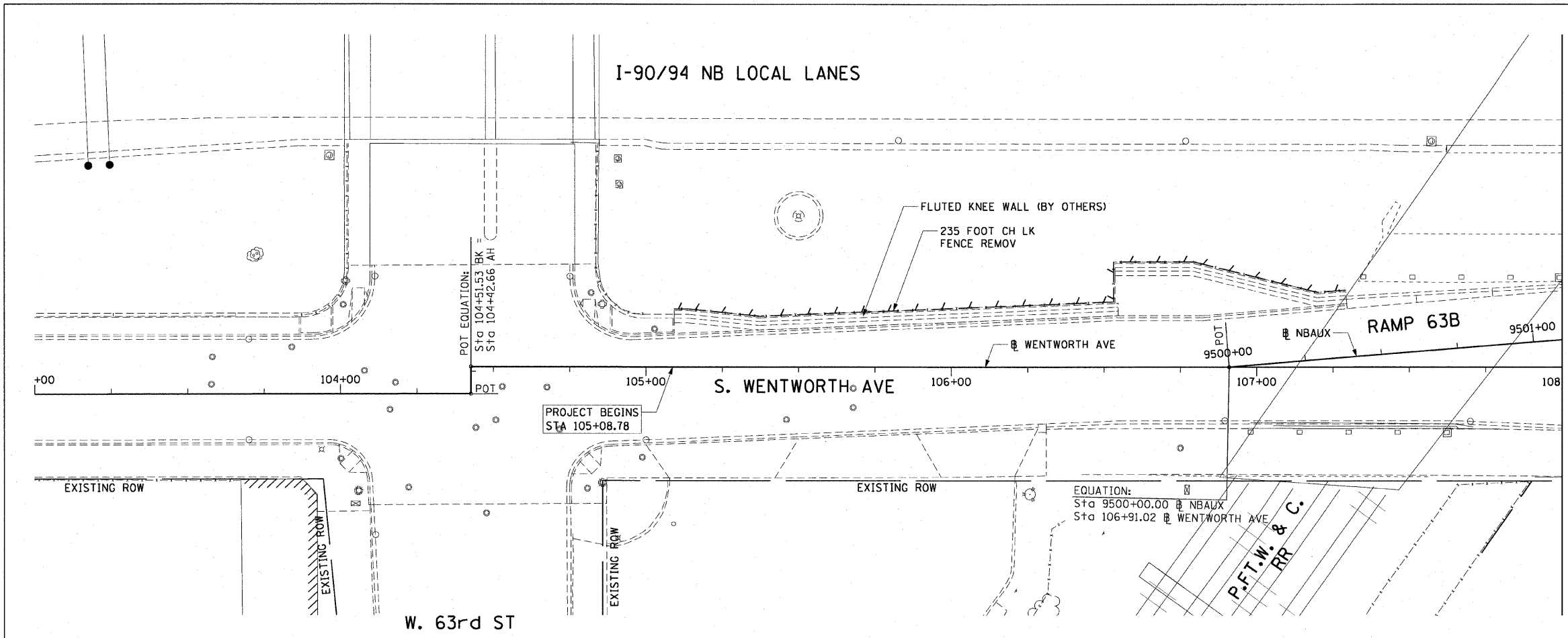
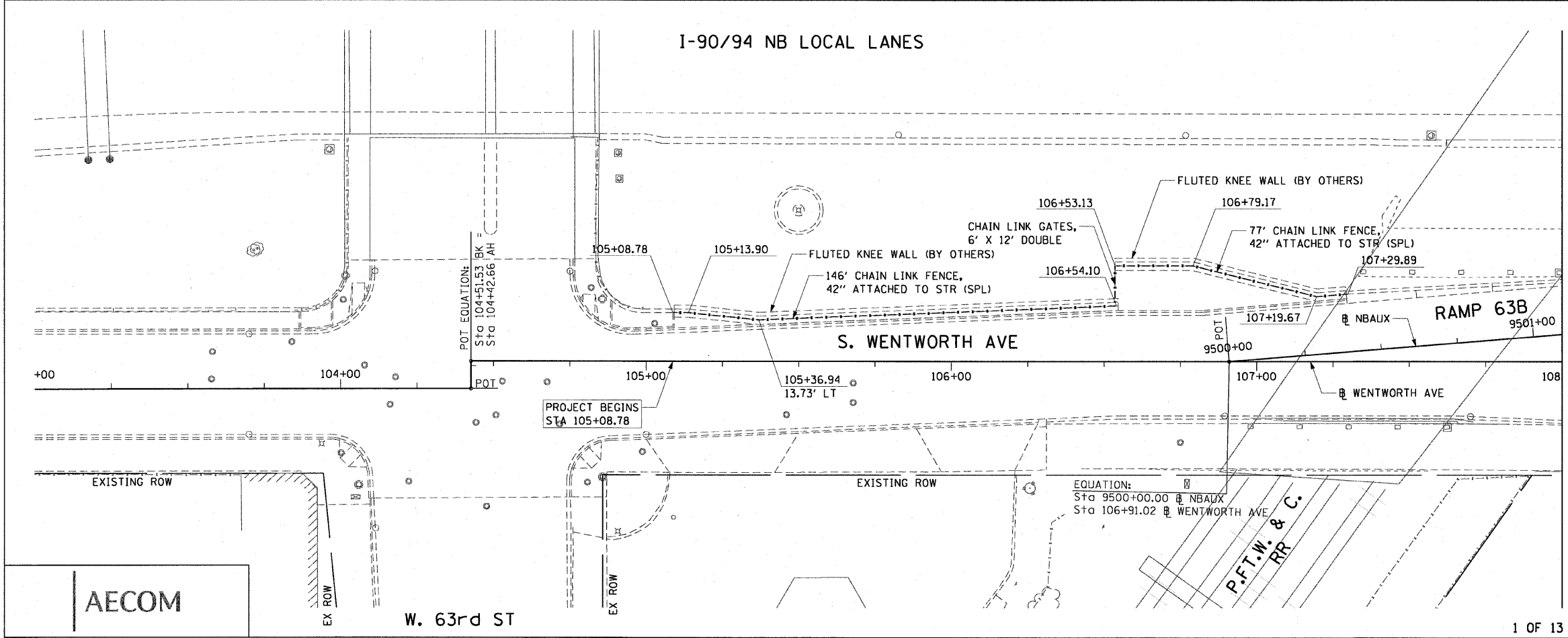


LEGEND:
 LINEAR REMOVALS



EXISTING CONDITIONS AND REMOVAL
 PROPOSED IMPROVEMENTS



- NOTES:
1. SEE STRUCTURAL DETAILS FOR CHAIN LINK FENCE AND GATE DETAILS.
 2. ALL STATION CALLOUTS ARE TAKEN AT THE CENTERLINE OF THE CHAIN LINK FENCE.
 3. FLUTED KNEE WALL CONSTRUCTED IN CONTRACT 62985.

REVISIONS	
NAME	DATE

ILLINOIS DEPARTMENT OF TRANSPORTATION
 F.A.I. 90/94 (DAN RYAN EXPRESSWAY)
 71ST ST TO 47TH ST (NB & SB FENCE AND GATES)
 EXISTING AND PROPOSED ROADWAY PLANS
 WENTWORTH AVENUE

SCALE: 1"=20'
 DATE: JANUARY 14, 2009

DRAWN BY: NJH
 CHECKED BY: RMG

AECOM

W:\scraft\p207\40468\40468\WIN28-knee-wall_fences\contract_35\pp350012.dwg 12:34:14 PM 1/13/2009