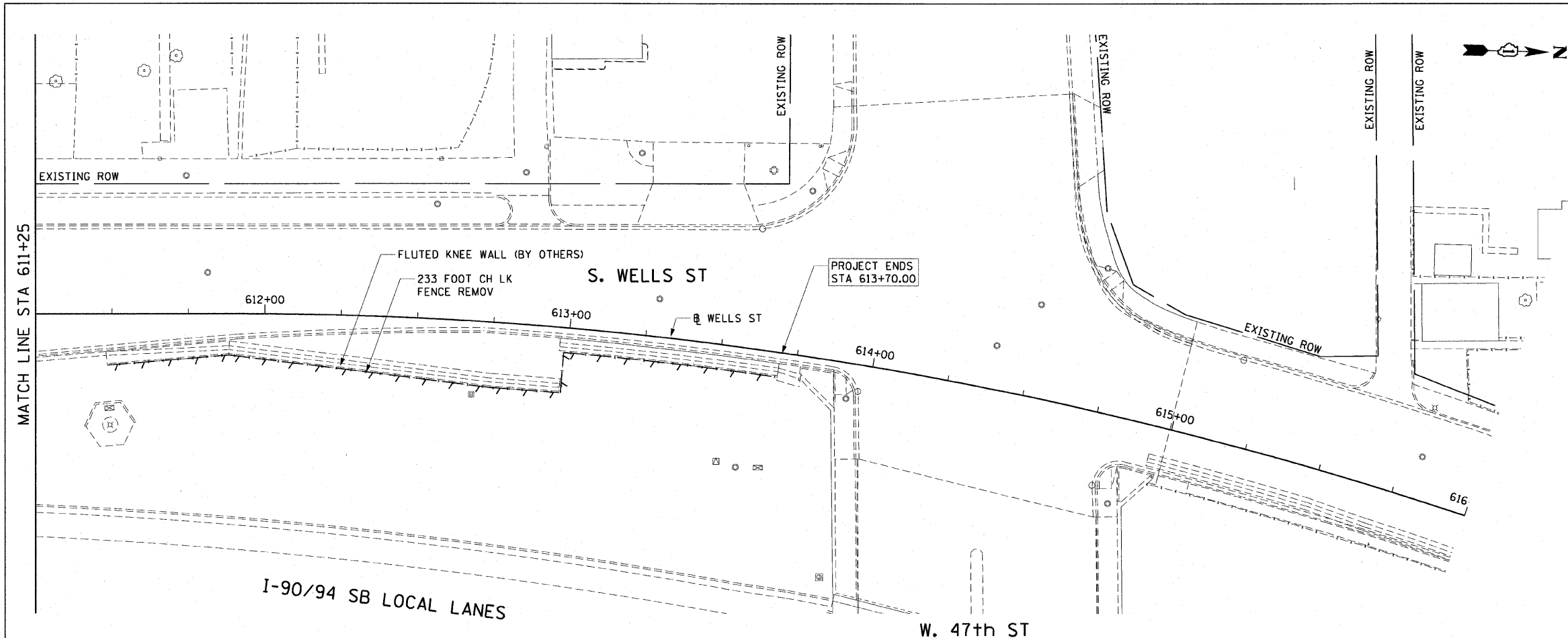


| | | | | |
|-----------------------|------------|---------------------------|--------------|-----------|
| F.A.I. RTE. | SECTION | COUNTY | TOTAL SHEETS | SHEET NO. |
| 90/94 | 2005-032 I | COOK | 37 | 25 |
| STA. 611+25 | | TO STA. 613+70.00 | | |
| FED. ROAD DIST. NO. 1 | | ILLINOIS FED. AID PROJECT | | |

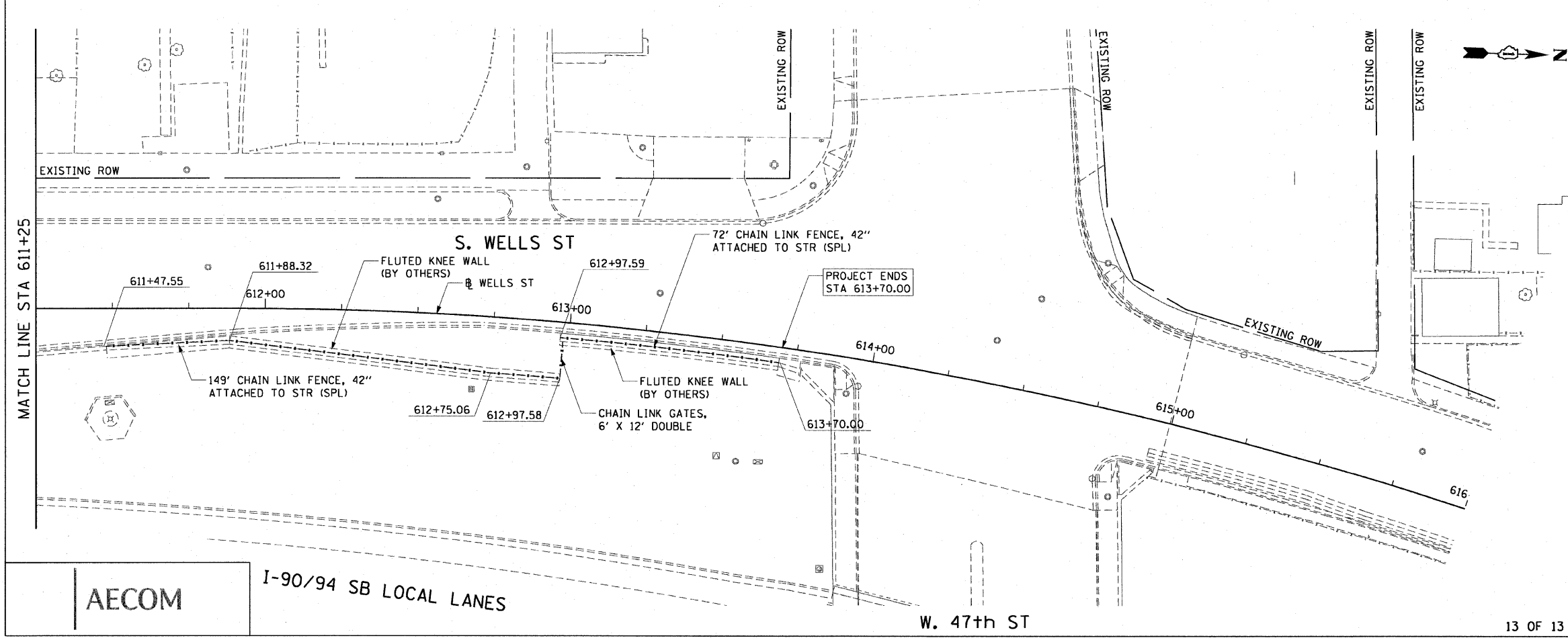
60A03



LEGEND:

 LINEAR REMOVALS

EXISTING CONDITIONS AND REMOVAL
 PROPOSED IMPROVEMENTS



- NOTES:
1. SEE STRUCTURAL DETAILS FOR CHAIN LINK FENCE AND GATE DETAILS.
 2. ALL STATION CALLOUTS ARE TAKEN AT THE CENTERLINE OF THE CHAIN LINK FENCE.
 3. FLUTED KNEE WALL CONSTRUCTED IN CONTRACT 62987.

| REVISIONS | |
|-----------|------|
| NAME | DATE |
| | |
| | |
| | |
| | |
| | |
| | |
| | |
| | |
| | |
| | |

ILLINOIS DEPARTMENT OF TRANSPORTATION
 F.A.I. 90/94 (DAN RYAN EXPRESSWAY)
 71ST ST TO 47TH ST (NB & SB FENCE AND GATES)
 EXISTING AND PROPOSED ROADWAY PLANS
 WELLS STREET
 SCALE: 1"=20'
 DATE: JANUARY 14, 2009
 DRAWN BY: NJH
 CHECKED BY: RMG

AECOM

12:34:49 PM
 1/13/2009