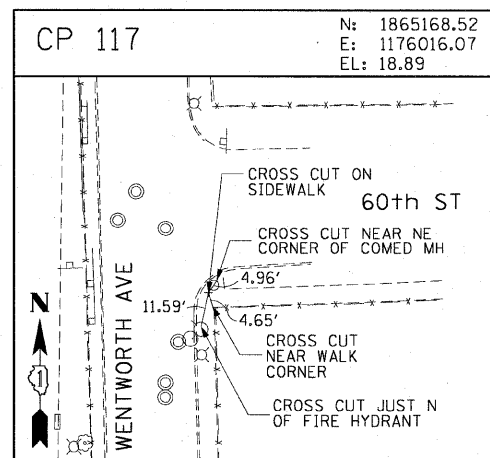
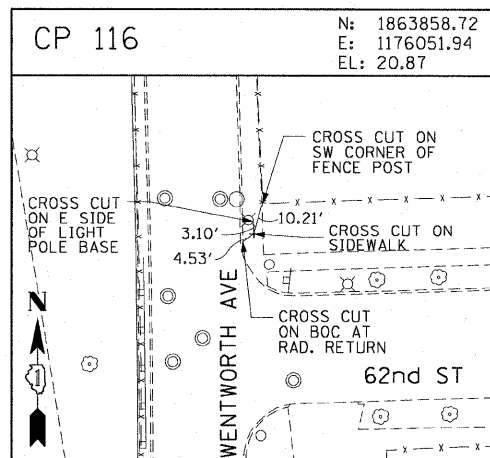
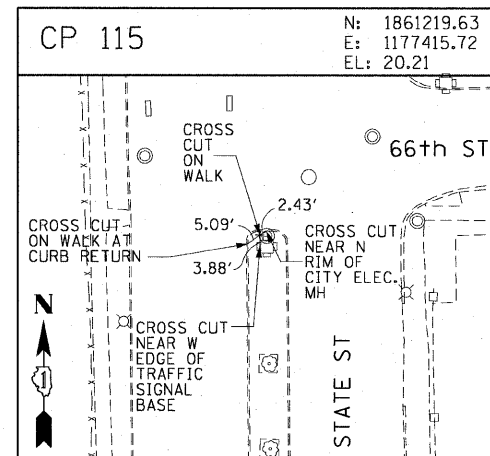
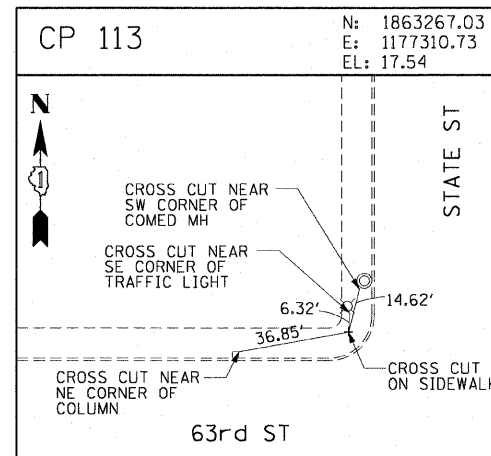
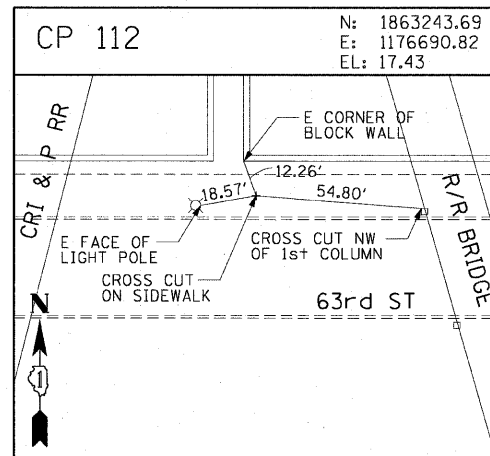
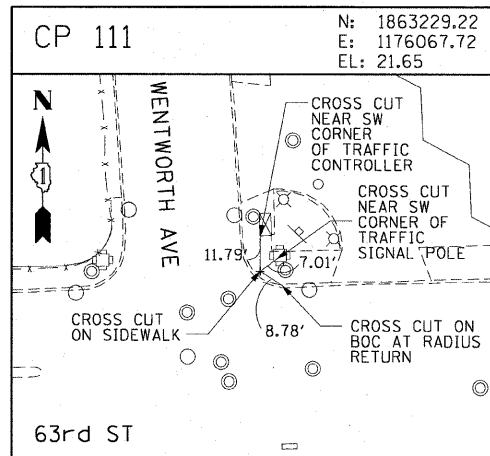
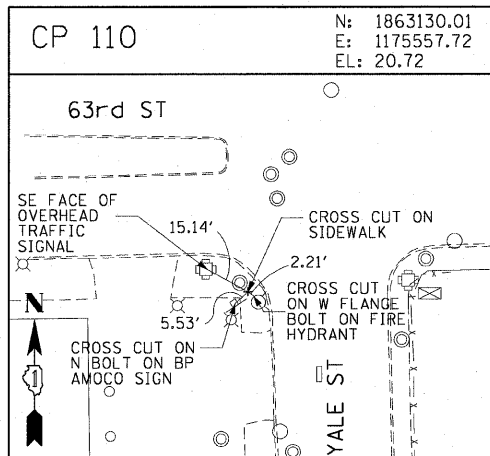
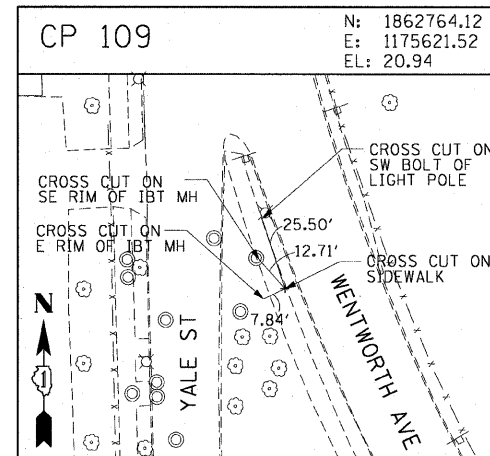
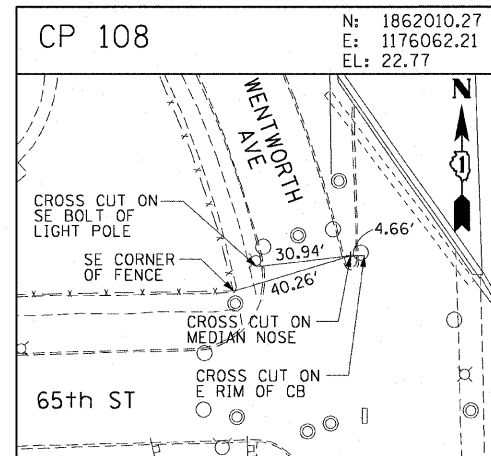
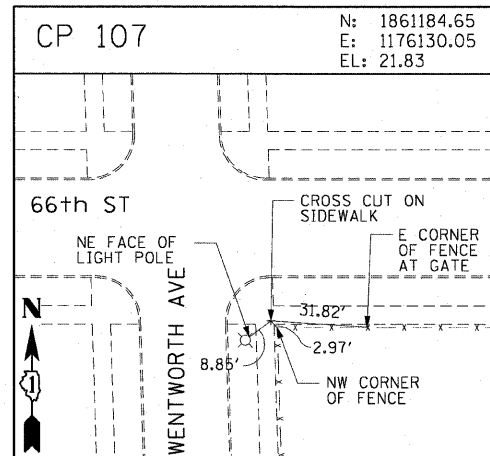
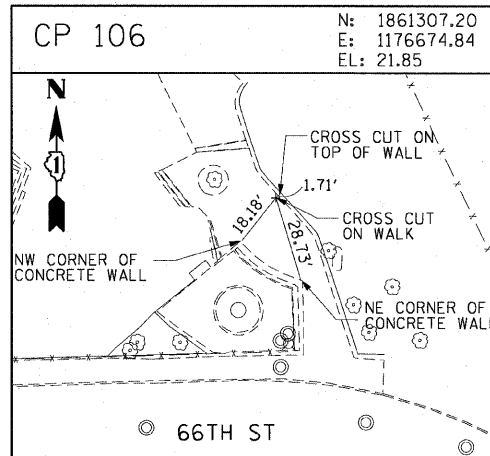
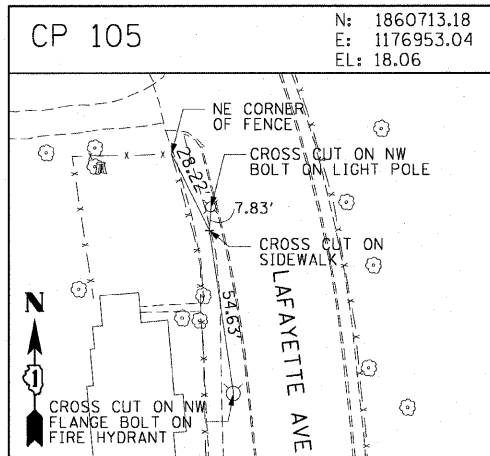
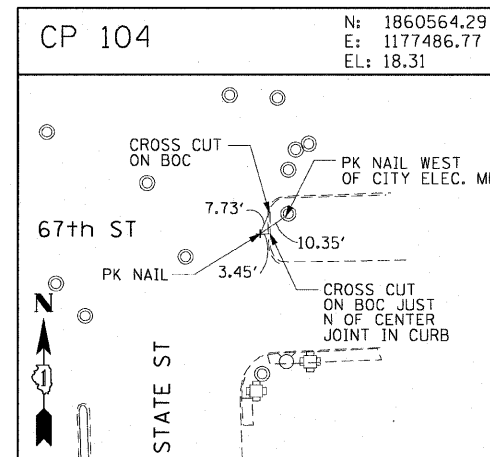
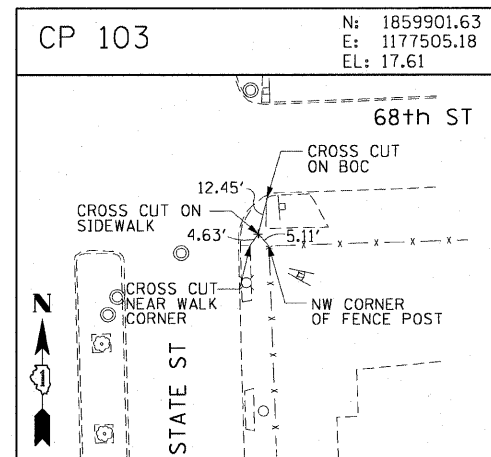
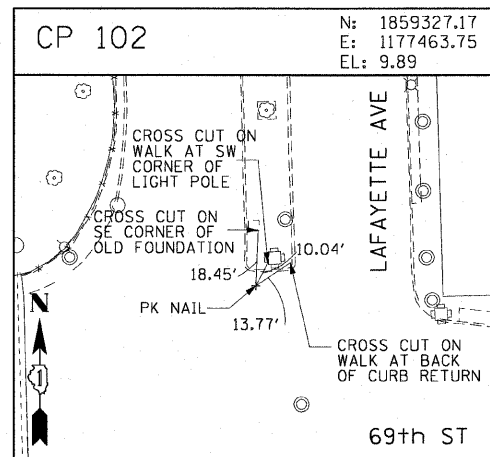
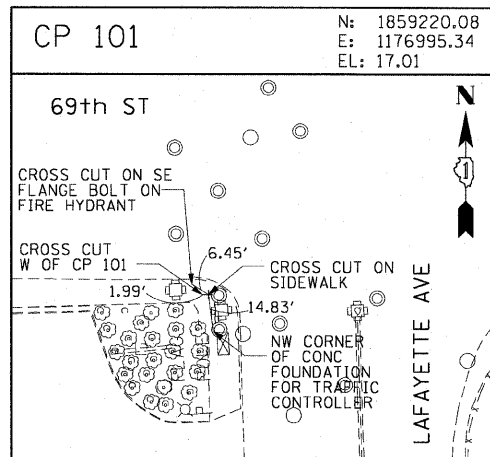
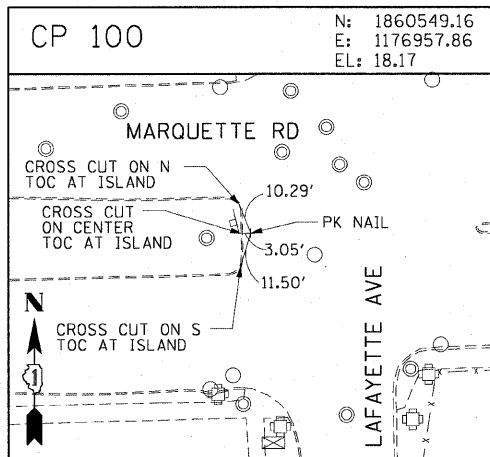


F.A.I. RTE.	SECTION	COUNTY	TOTAL SHEETS	SHEET NO.
90/94	2006-034 I	COOK	36	11
STA.		TO STA.		
FED. ROAD DIST. NO. 1		ILLINOIS FED. AID PROJECT		
60888				



AECOM

REVISIONS	
NAME	DATE

ILLINOIS DEPARTMENT OF TRANSPORTATION  
F.A.I. 90/94 (DAN RYAN EXPRESSWAY)  
FENCE AND GATES VARIOUS LOCATIONS  
(71ST STREET TO 63RD STREET)  
SURVEY TIES AND CONTROL POINTS

SCALE: 1"=30'  
DATE: JANUARY 14, 2009  
DRAWN BY: MRK  
CHECKED BY: JAL

1/13/2009 2:36:27 PM \\usscag1p207\p404659\404659\civil\22-knee-wall\Fence.sit\contract 4\1410120.sit