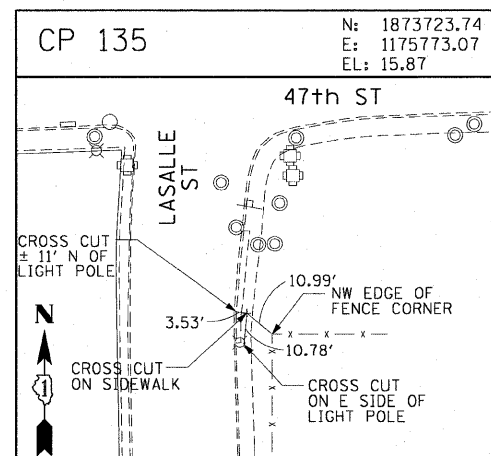
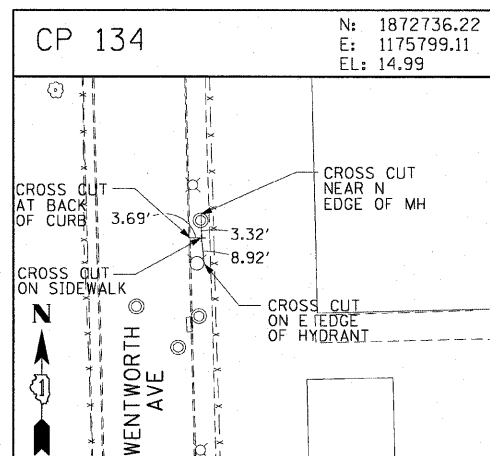
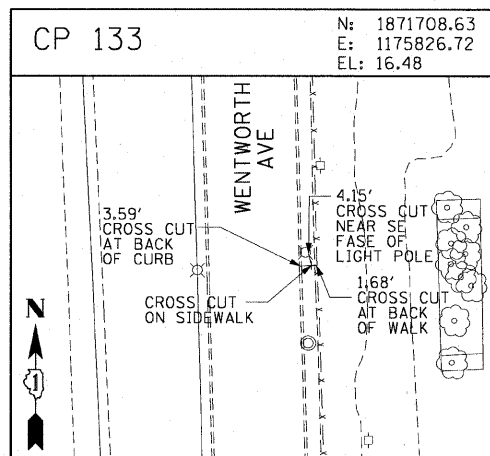
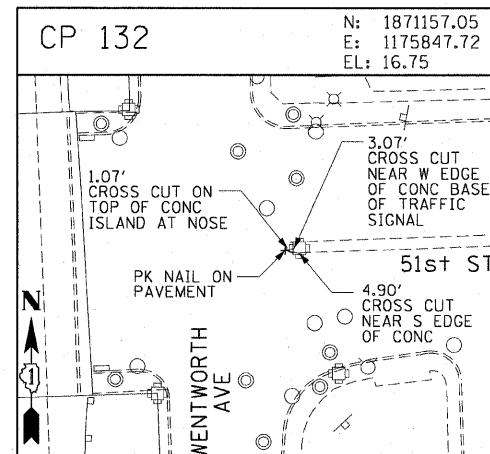
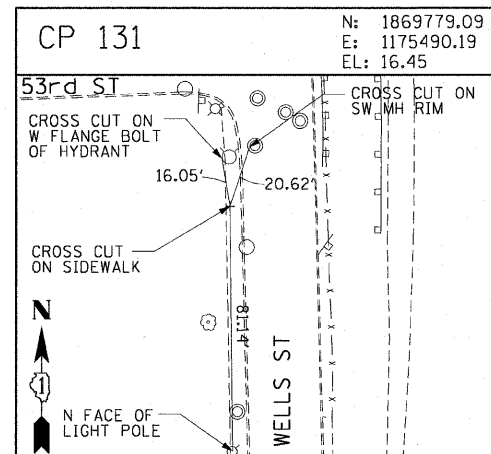
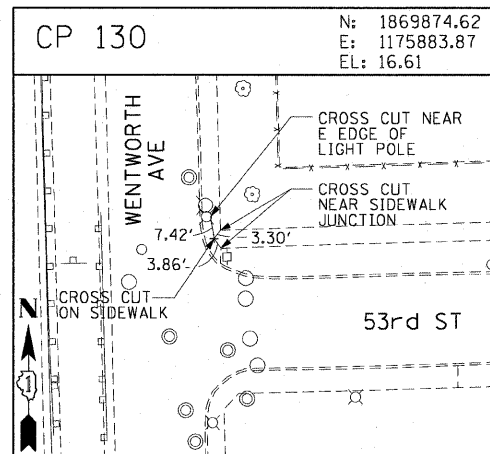
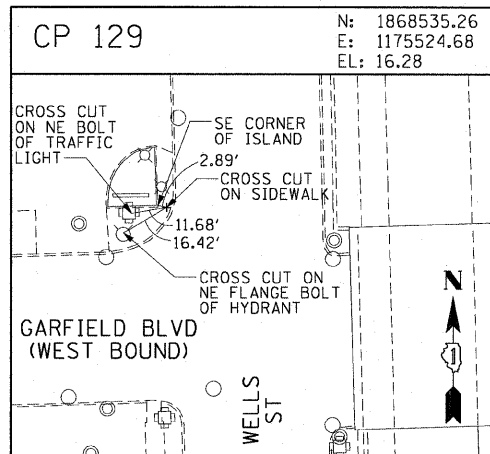
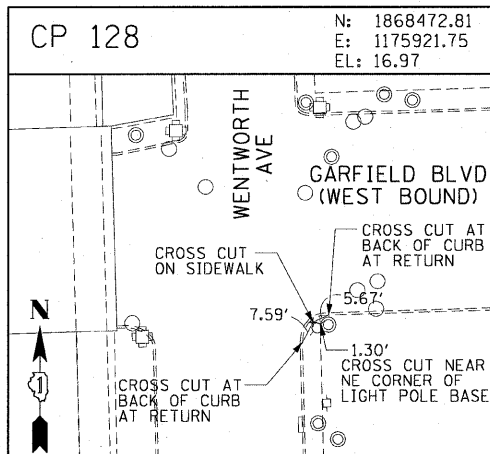
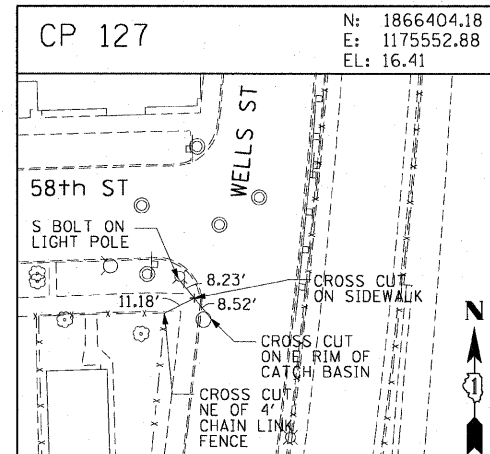
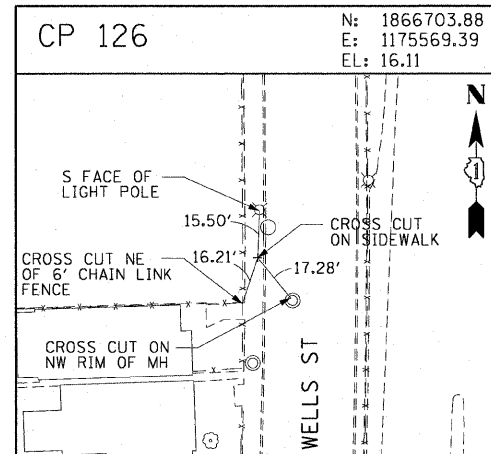
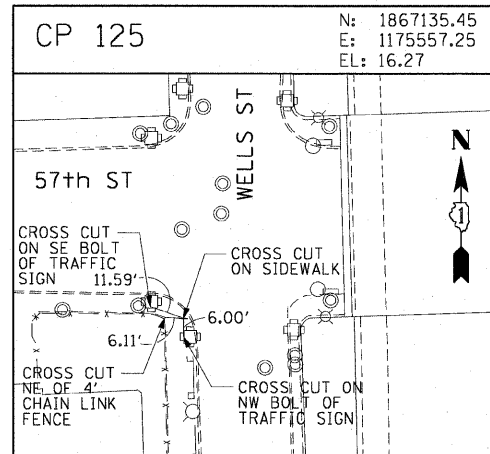
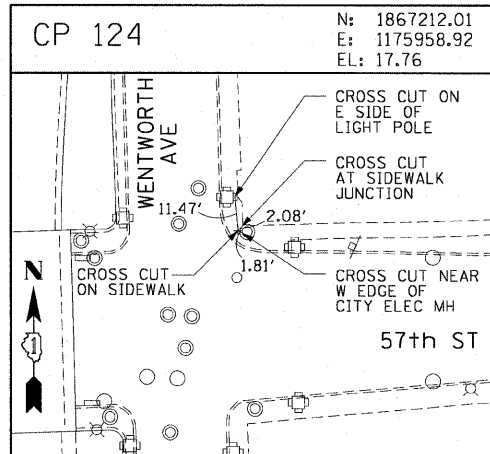
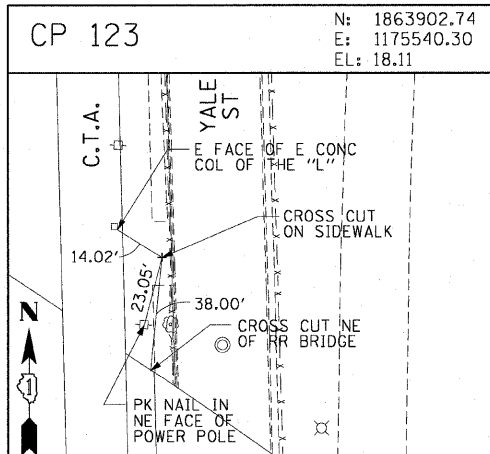
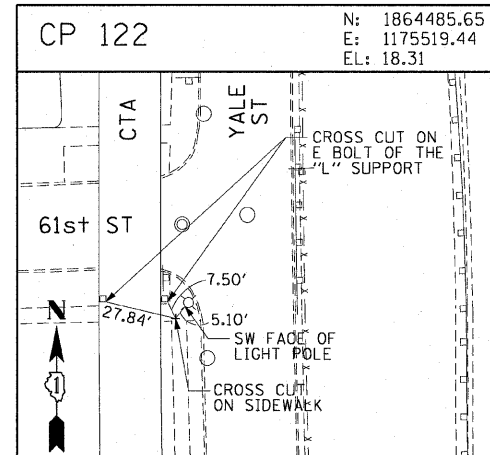
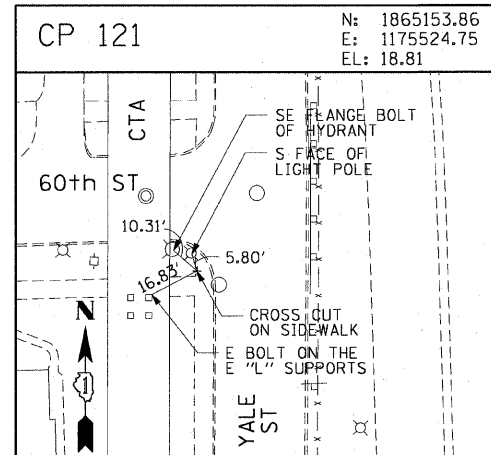
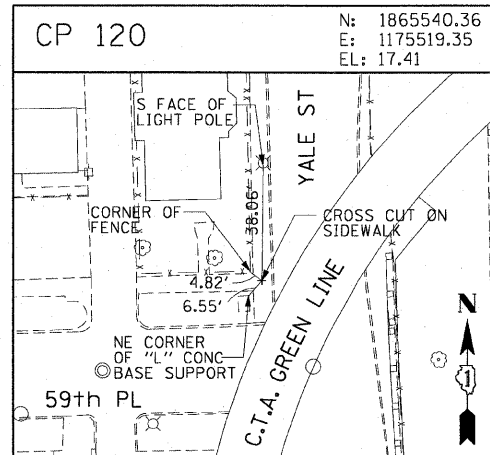
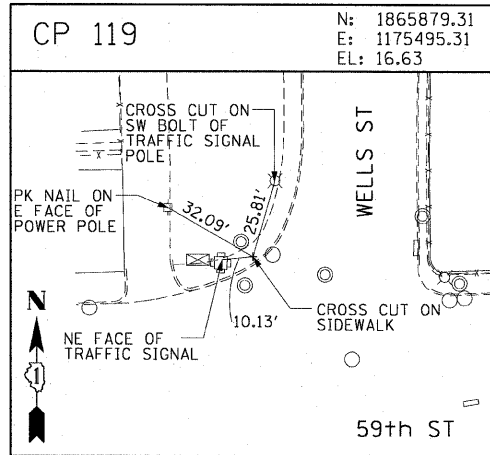
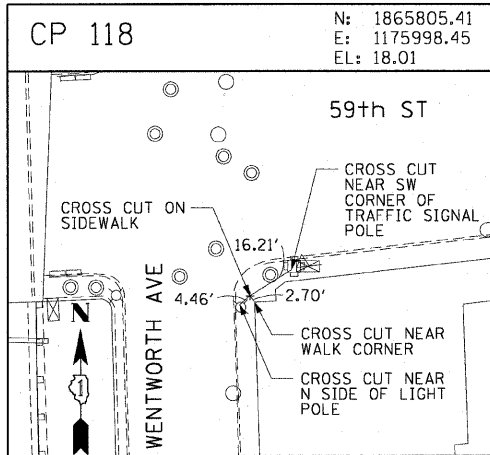


F.A.I. RTE.	SECTION	COUNTY	TOTAL SHEETS	SHEET NO.
90/94	2006-034 I	COOK	36	12
STA.		TO STA.		
FED. ROAD DIST. NO. 1		ILLINOIS FED. AID PROJECT		
60B88				



AECOM

REVISIONS	
NAME	DATE

ILLINOIS DEPARTMENT OF TRANSPORTATION
F.A.I. 90/94 (DAN RYAN EXPRESSWAY)
FENCE AND GATES VARIOUS LOCATIONS
(71ST STREET TO 63RD STREET)
SURVEY TIES AND CONTROL POINTS

SCALE: 1"=30'
DATE: JANUARY 14, 2009

DRAWN BY: MRK
CHECKED BY: JAL

1/13/2009 2:36:28 PM \\uscbtj\p207\p40468\p40468.dwg\IN28-knee-wall_fence\contract-4\14101212.dwg