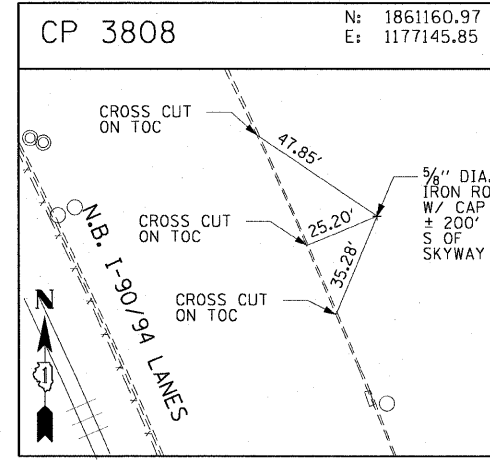
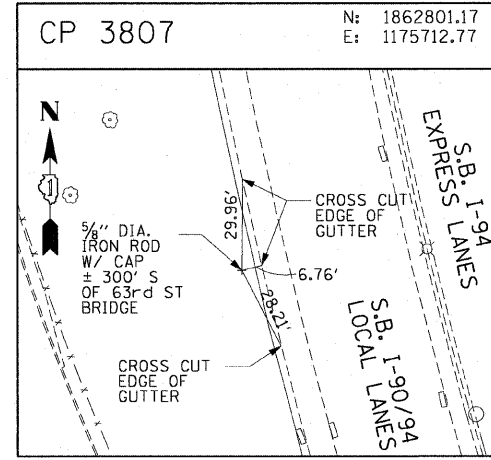
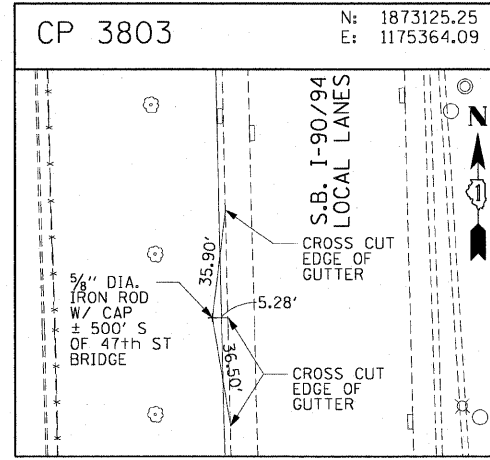
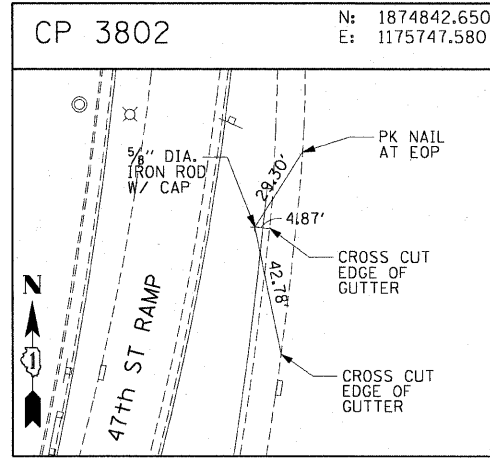
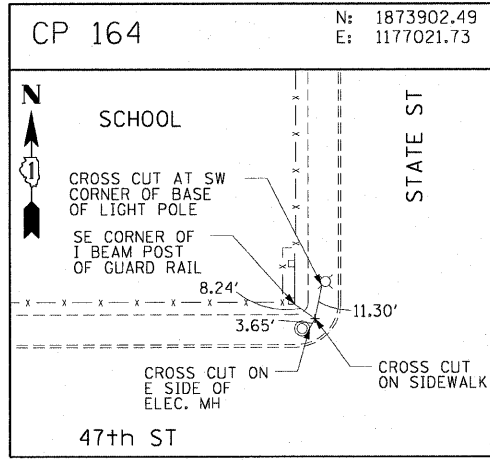
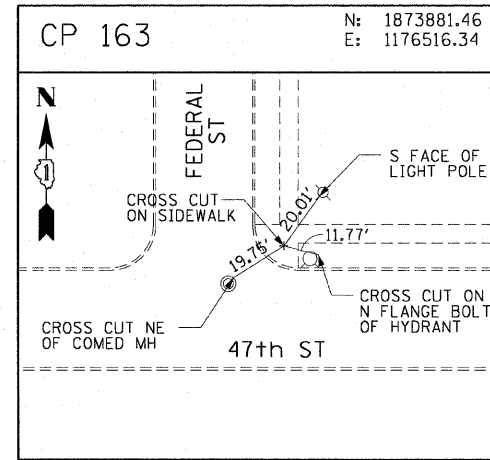
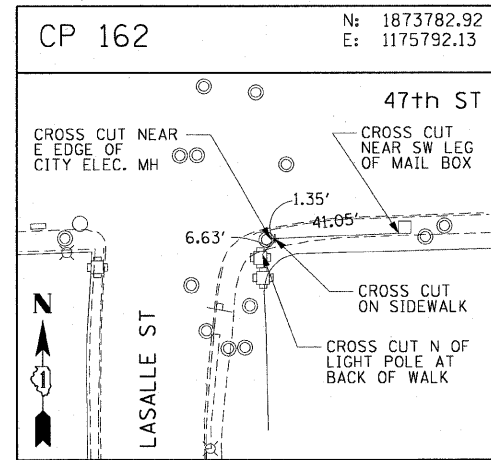
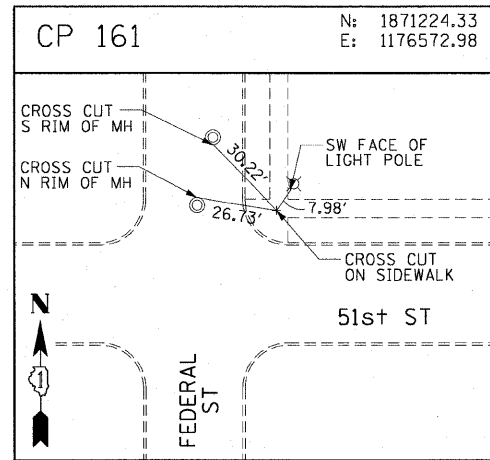
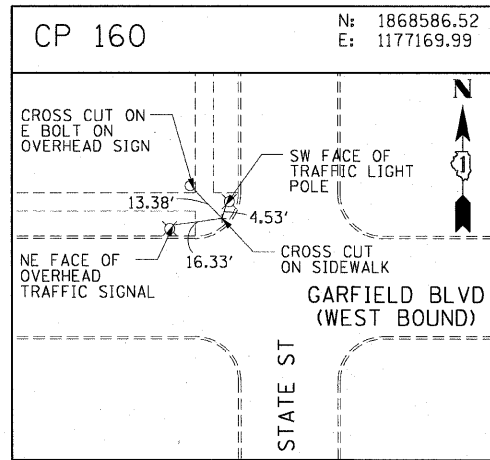
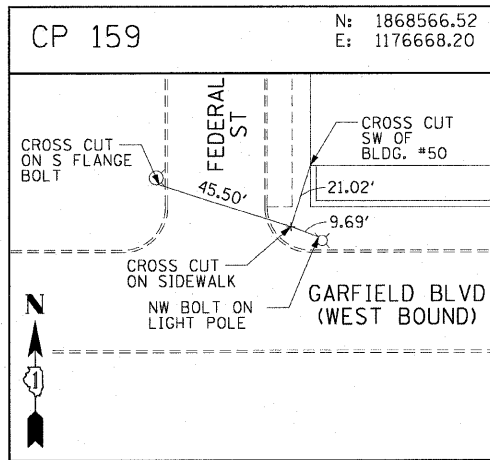
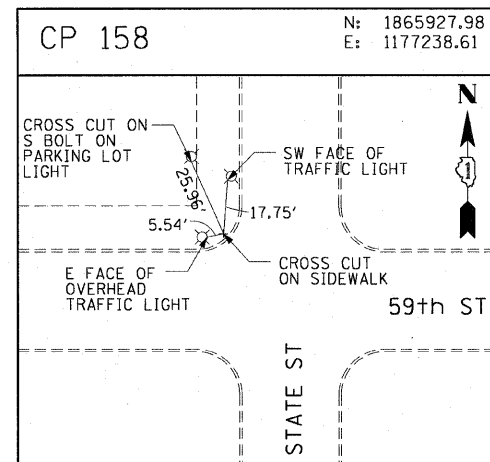
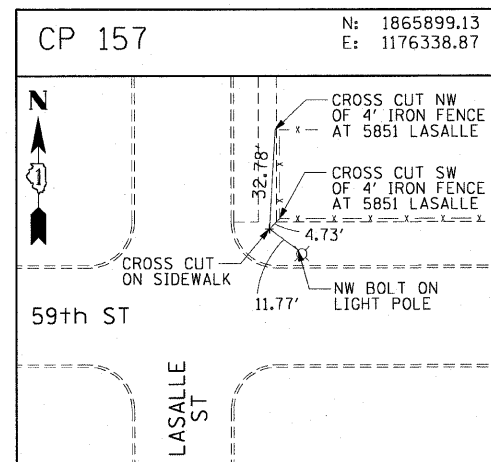
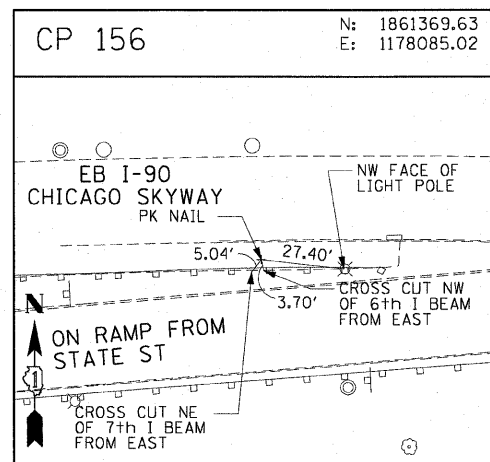
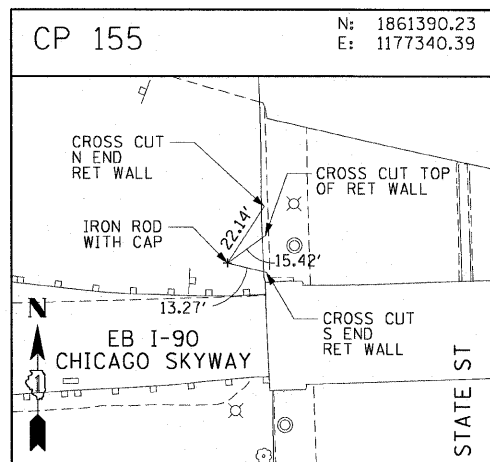
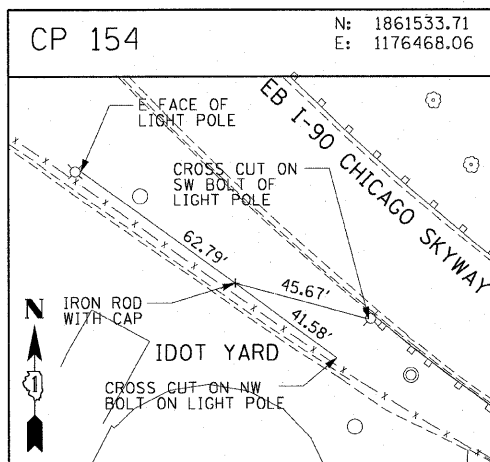


F.A.I. RTE.	SECTION	COUNTY	TOTAL SHEETS	SHEET NO.
90/94	2006-034 I	COOK	36	14
STA.		TO STA.		
FED. ROAD DIST. NO. 1		ILLINOIS FED. AID PROJECT		

60B88



AECOM

REVISIONS	
NAME	DATE

ILLINOIS DEPARTMENT OF TRANSPORTATION
F.A.I. 90/94 (DAN RYAN EXPRESSWAY)
FENCE AND GATES VARIOUS LOCATIONS
(71ST STREET TO 63RD STREET)
SURVEY TIES AND CONTROL POINTS

SCALE: 1"=30'
DATE: JANUARY 14, 2009
DRAWN BY: MRK
CHECKED BY: JAL

\\uscbg\p207\p40468\p40468\N128\knee-wall_fence\stn\contract_4\1410142a.dwg 2/3/2009 2:36:29 PM