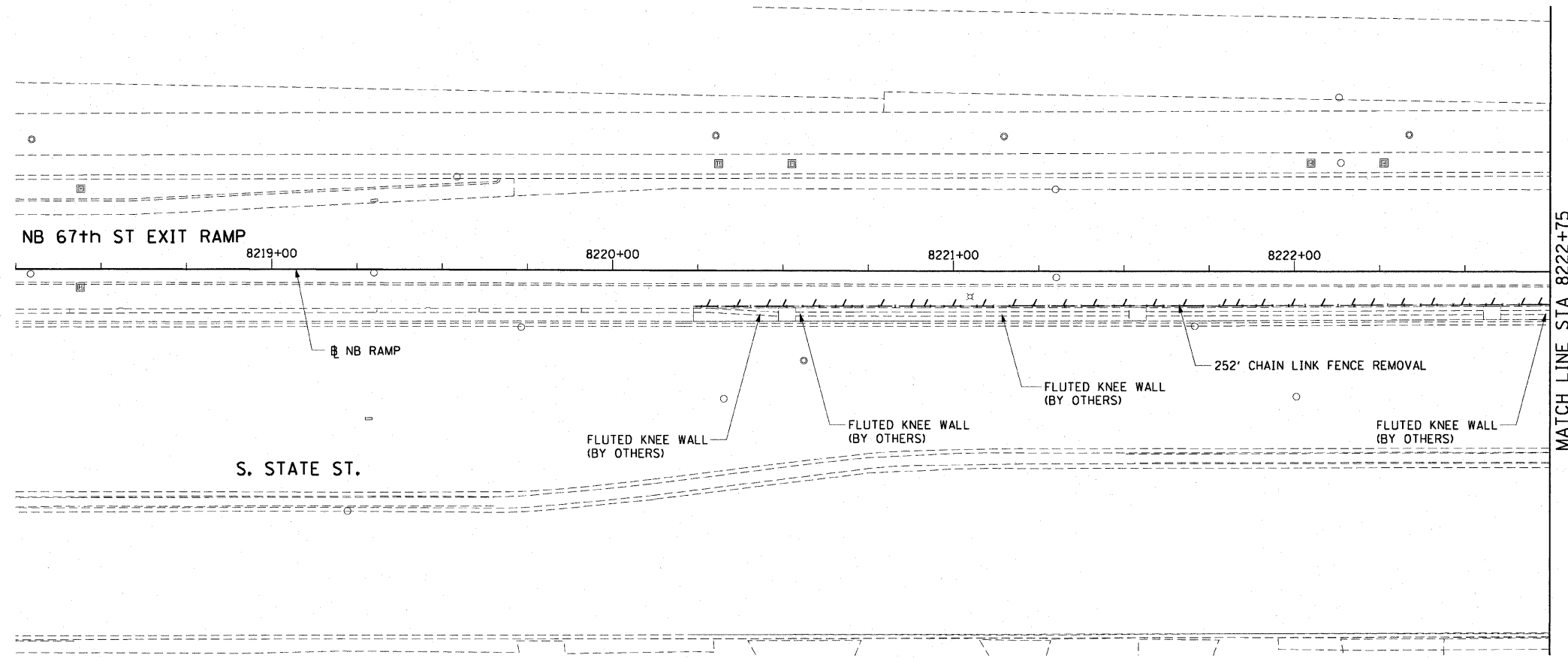


F.A.I. RTE.	SECTION	COUNTY	TOTAL SHEETS	SHEET NO.
90/94	2006-034 I	COOK	36	18
STA. 8220+23.67		TO STA. 8222+75		
FED. ROAD DIST. NO. 1		ILLINOIS FED. AID PROJECT		

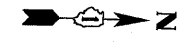
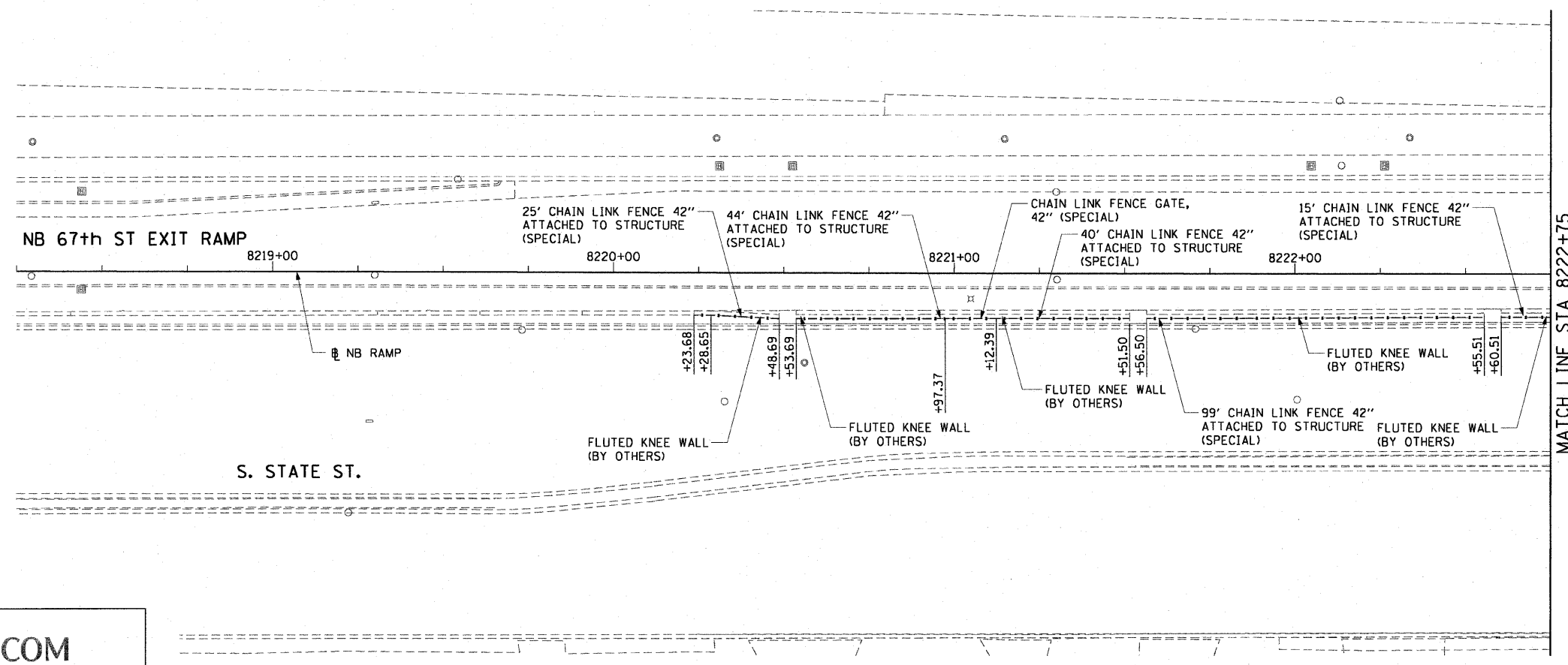
60B88



LEGEND:

--- LINEAR REMOVALS

EXISTING CONDITIONS AND REMOVAL  
PROPOSED IMPROVEMENTS



NOTES:

1. SEE STRUCTURAL DETAILS FOR CHAIN LINK FENCE DETAILS.
2. ALL STATION CALLOUTS ARE TAKEN AT THE CENTERLINE OF THE CHAIN LINK FENCE.
3. THE FLUTED KNEE WALL IS CONSTRUCTED IN CONTRACT 62983.
4. THE PROPOSED FENCE AT STATION 8220+23.68 SHALL ALIGN WITH THE FENCE ATTACHED TO THE RETAINING WALL.
5. COORDINATE WITH CONTRACT 62983 FOR THE LOCATIONS OF LIGHT POLES ATTACHED TO THE KNEE WALL.

REVISIONS	
NAME	DATE

ILLINOIS DEPARTMENT OF TRANSPORTATION  
F.A.I. 90/94 (DAN RYAN EXPRESSWAY)  
FENCE AND GATES VARIOUS LOCATIONS  
(71ST STREET TO 63RD STREET)  
EXISTING AND PROPOSED ROADWAY

SCALE: 1"=20'  
DATE: JANUARY 14, 2009  
DRAWN BY: NJH  
CHECKED BY: RMG

N:\scg\p1\207\p40468\p40468.dwg\1\28-knee\_wall\_fence.sht\contract-4\p40468.dwg 2:36:32 PM 1/15/2009