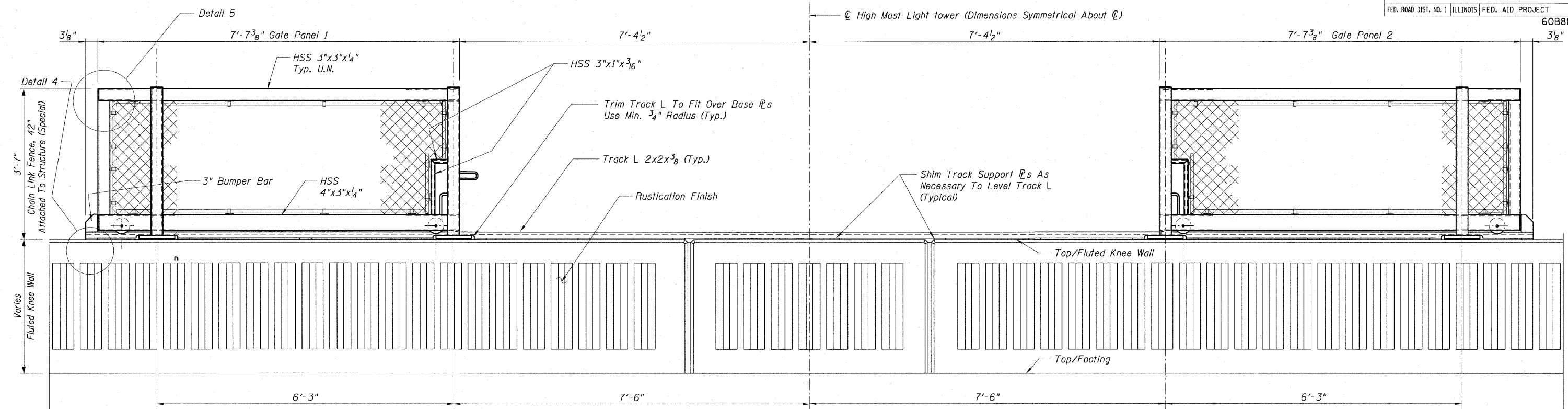
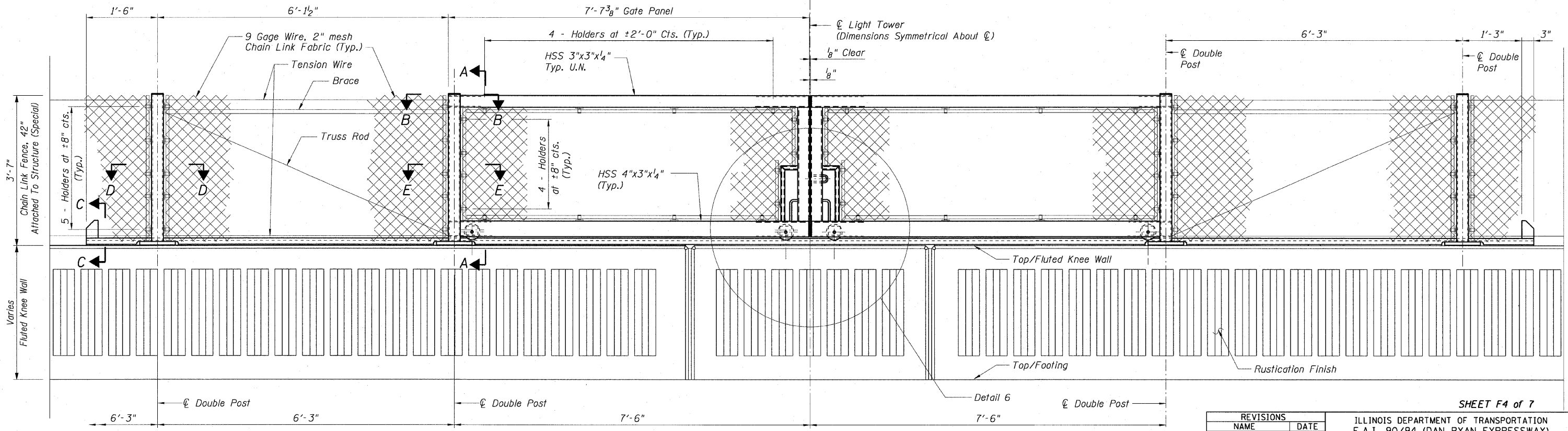


F.A.I. RTE.	SECTION	COUNTY	TOTAL SHEETS	SHEET NO.
90/94	2006-034 I	COOK	36	28
STA.		TO STA.		
FED. ROAD DIST. NO. 1		ILLINOIS FED. AID PROJECT		

60888



DETAIL BACK FACE ELEVATION - GATE IN OPEN POSITION



DETAIL BACK FACE ELEVATION - GATE IN CLOSED POSITION

- NOTES:**
1. For Notes see Sheet F5.
  2. For Sections A-A, B-B, D-D and E-E see Sheet F6.
  3. For Sections C-C and Details 4, 5, 6 and 7 see Sheet F7.

REVISIONS	
NAME	DATE

SHEET F4 of 7

ILLINOIS DEPARTMENT OF TRANSPORTATION  
 F.A.I. 90/94 (DAN RYAN EXPRESSWAY)  
 FENCE AND GATES VARIOUS LOCATIONS  
 (71ST STREET TO 63RD STREET)  
**TYPICAL ELEVATIONS**  
**CHAIN LINK FENCE, 42" GATE (SPECIAL)**  
**COOK COUNTY**

SCALE: None  
 DATE: JANUARY 14, 2009

DRAWN BY: FJD  
 CHECKED BY: RS

AECOM

1/13/2009 2:36:36 PM