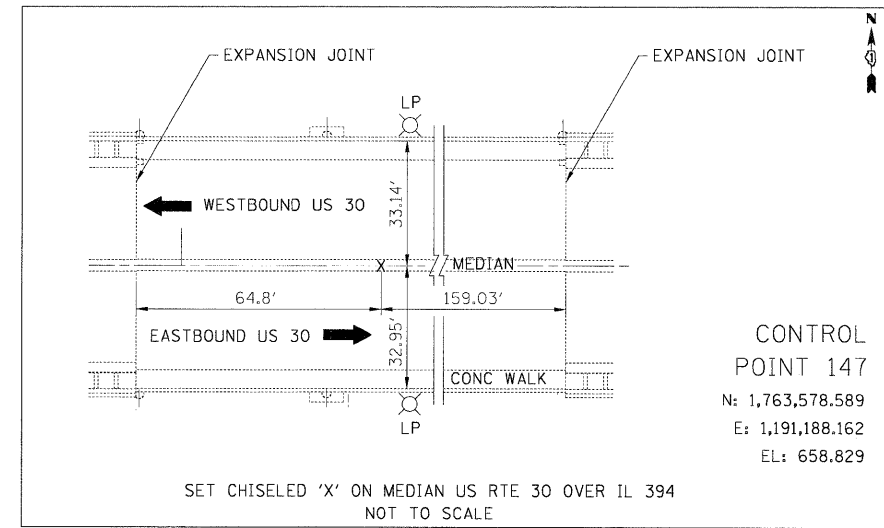


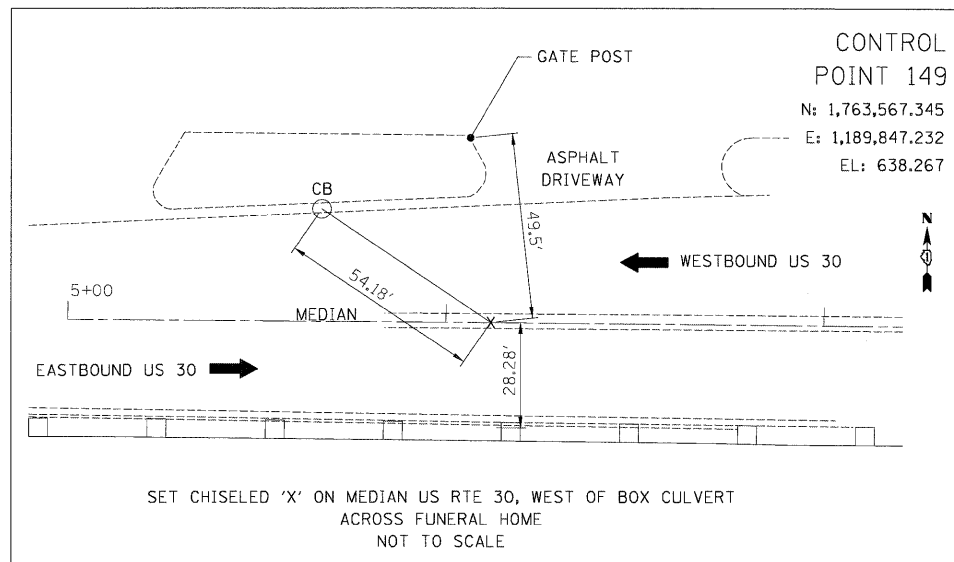
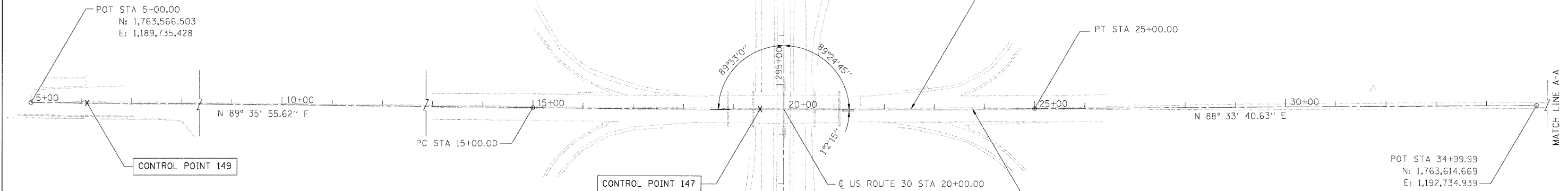
BENCHMARK 'A' ELEVATION 632.511'
 DESCRIPTION:
 SET 'X' CUT ON SOUTHERLY SIDE OF CONCRETE BASE TO LIGHT POLE OPPOSITE RE-LAY STATION ON NORTHSIDE RTE 30 PRIOR TO ON RAMP NB RTE 394.

BENCHMARK 'B' ELEVATION 636.817'
 DESCRIPTION:
 SET 'X' CUT ON SOUTHERLY FACE OF CONCRETE BASE TO LIGHT POLE ON RAMP NB IL RTE 394 NORTHSIDE OF US RTE 30.

BENCHMARK 'D' ELEVATION 636.433'
 DESCRIPTION:
 SET 'X' ON NORTHWEST CORNER OF HEADWALL TO CULVERT UNDER WEST DRIVEWAY OF McCULLOUGH FUNERAL & CREMATION SERVICES NORTH SIDE OF US RTE 30.



CONTROL POINT 147
 N: 1,763,578.589
 E: 1,191,188.162
 EL: 658.829



CONTROL POINT 149
 N: 1,763,567.345
 E: 1,189,847.232
 EL: 638.267

CURVE DATA

EXIST. CURVE US302
 PI STA. = 20+00.01
 N: 1,763,577.007
 E: 1,191,235.404
 $\Delta = 1^\circ 02' 15''$ (LT)
 $D = 0^\circ 06' 14''$
 $R = 55,224.85'$
 $T = 500.01'$
 $L = 1,000.00'$
 $E = 2.26'$
 $e = NA$
 $T.R. = NA$
 $S.E. RUN = NA$
 P.C. STA. = 15+00.00
 N: 1,763,573.506
 E: 1,190,735.403
 P.T. STA. = 25+00.00
 N: 1,763,589.561
 E: 1,191,735.260

POT STA 305+00
 N: 1,762,629.029
 E: 1,191,249.487

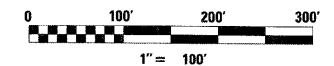
BOWMAN, BARRETT & ASSOCIATES INC.
 CONSULTING ENGINEERS
 Chicago, Illinois
 312.228.0100
 www.bbdainc.com

FILE NAME = D168005-shr-ATB.dgn	USER NAME = default	DESIGNED -	REVISED -
PLOT SCALE = #SCALE#	CHECKED - RS	DRAWN - RA	REVISED -
PLOT DATE = 5/5/2009	DATE - 5/6/2009		REVISED -

STATE OF ILLINOIS
DEPARTMENT OF TRANSPORTATION

ALIGNMENT, TIES, AND BENCHMARKS

SCALE: 1"=100' SHEET NO. 1 OF 1 SHEETS STA. 5+00.00 TO STA. 34+99.99



F.A. RTE.	SECTION	COUNTY	TOTAL SHEETS	SHEET NO.
0353	0303.1B-1	COOK	91	10
FED. ROAD DIST. NO.			CONTRACT NO. 60C05	
ILLINOIS FED. AID PROJECT				