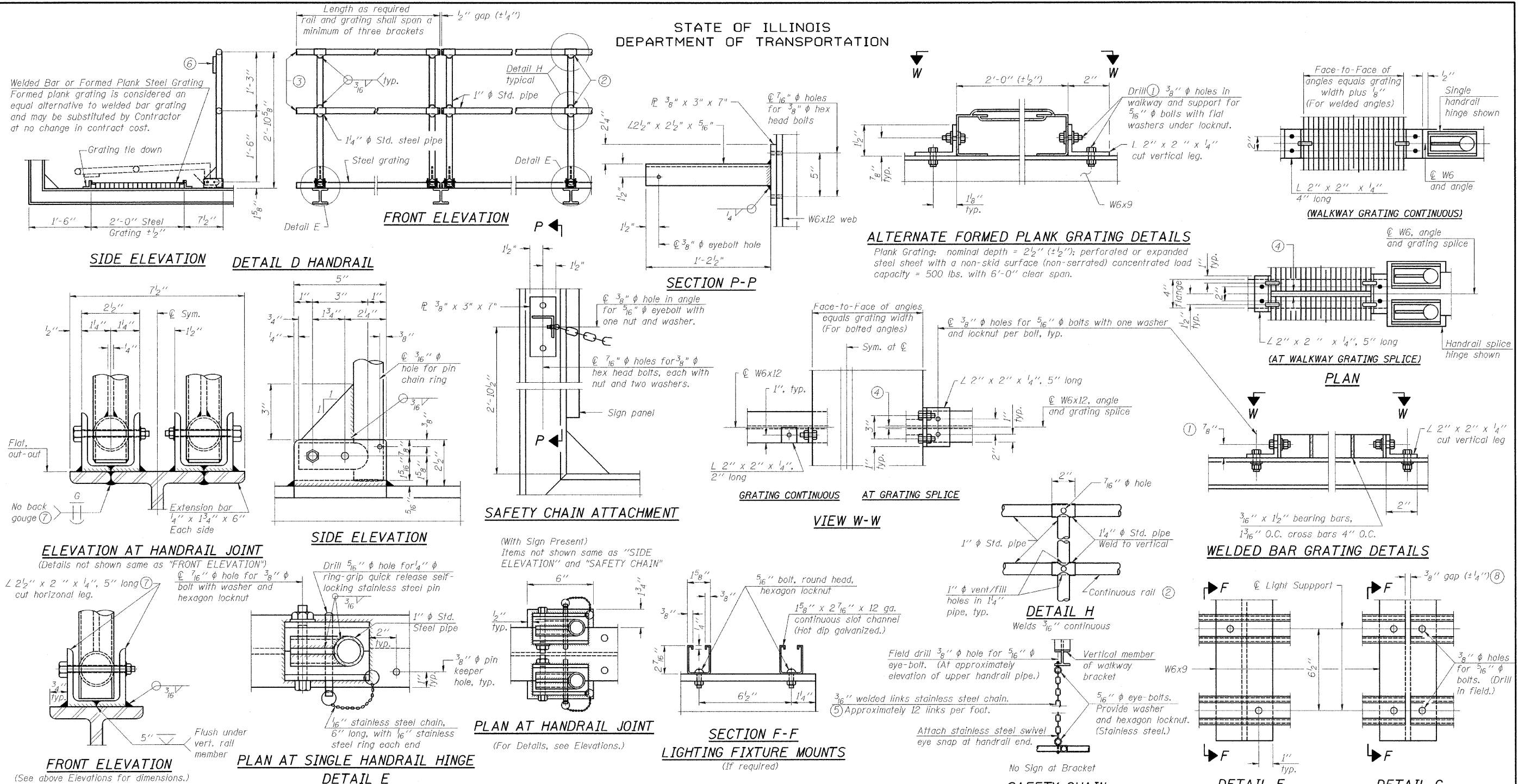
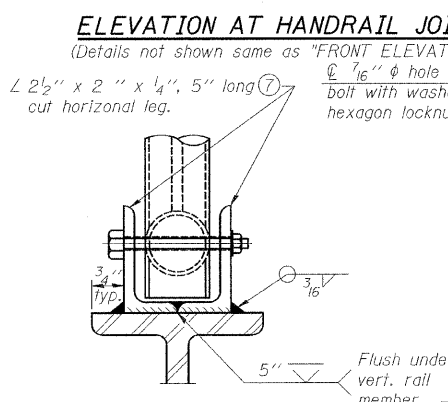
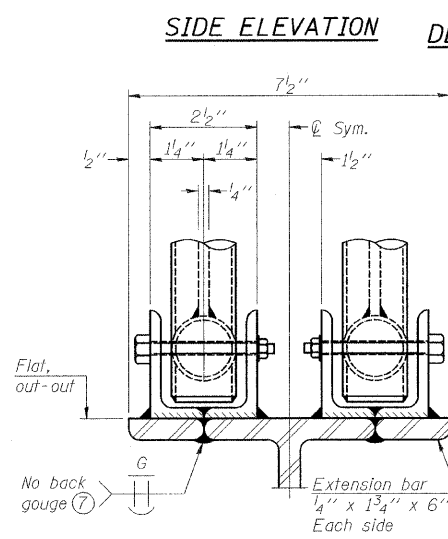


STATE OF ILLINOIS
DEPARTMENT OF TRANSPORTATION



Welded Bar or Formed Plank Steel Grating
Formed plank grating is considered an equal alternative to welded bar grating and may be substituted by Contractor at no change in contract cost.



NUMBER	REVISION	DATE

DESIGNED - DF
CHECKED - BLU
DRAWN - LAM
CHECKED - BLU
BM-4

12-1-08

- NOTES**
- Drilling holes in grating may be done in shop or field, based on Contractor's preference and subject to accurate alignment. Field drilled holes must be touched up with galvanized paint.
 - Horizontal rail member shall be continuous thru 1 1/4" pipe. Provide 7/16" hole in 1 1/4" pipe for 3/8" bolt. Field drill 7/16" hole in horizontal rail member. Provide washer and locknut for bolt. (Use 5/16" eyebolts in 7/16" holes on top rail at ends only.)
 - Install standard force-fit end caps or weld 1/8" end plates with 1/8" c.f.w. and grind smooth. (All rail ends.)
 - 3/8" (+1/4") gap between grating panels at splice.
 - Chain to be type 304L stainless steel suitable for prolonged exterior exposure. Approximately 3'-6" long chain per location. Maximum sag with handrail erected = 4".
 - 1/8" x 1/2" x 2" welded to handrail posts to protect locations that contact grating.
 - Extrusions may be used in lieu of details shown, with approval by Engineer.
 - Field cut ends of light support channels shall be free of burrs or hazardous projections and coated with zinc-rich primer or equivalent.

SAFETY CHAIN
One (1) required for each end of each walkway.

VIEW W-W
Face-to-Face of angles equals grating width (For bolted angles)
Sym. at C

SECTION F-F LIGHTING FIXTURE MOUNTS
(If required)

DETAIL H
Welds 3/16" continuous
Field drill 3/8" hole for 5/16" eye-bolt. (At approximately elevation of upper handrail pipe.)
Vertical member of walkway bracket
5/16" eye-bolts. Provide washer and hexagon locknut. (Stainless steel.)
Attach stainless steel swivel eye snap at handrail end.

GRATING CONTINUOUS AT GRATING SPLICE

WELDED BAR GRATING DETAILS
3/16" x 1 1/2" bearing bars, 1 3/16" O.C. cross bars 4" O.C.

DETAIL F
W6x9
6 1/2"

DETAIL G
3/8" gap (+1/4")

BRIDGE MOUNT SIGN STRUCTURES WALKWAY DETAILS				
F.A.P. RTE.	SECTION	COUNTY	TOTAL SHEETS	SHEET NO.
0353	0303.1B-1	COOK	91	31
SN 016-0275		CONTRACT NO. 60C05		
FED. ROAD DIST. NO.		ILLINOIS FED. AID PROJECT		

SHEET NO. 4
4 SHEETS

BOWMAN, BARRETT & ASSOCIATES INC.
CONSULTING ENGINEERS
Chicago, Illinois
312.228.0100
www.bbainc.com
Job No. 910