

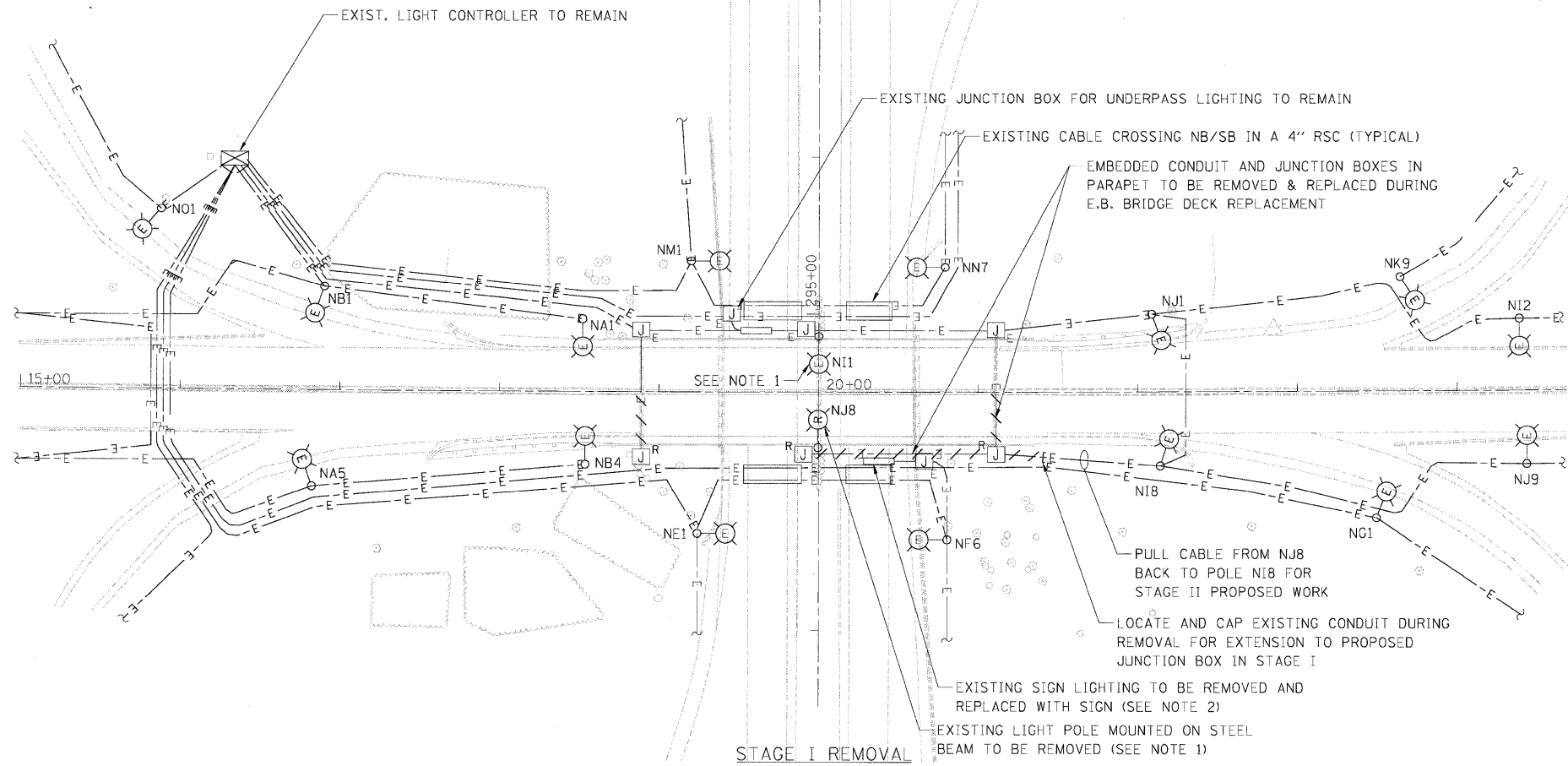
**NOTES**

- EXISTING BRIDGE LIGHTING UNIT NI1 TO BE MAINTAINED AND SERVE AS TEMPORARY LIGHTING DURING STAGE 1.
- SIGN LIGHTING FIXTURES TO BE SALVAGED TO IDOT, CONDUIT, JUNCTION BOXES AND WIRE TO BE REMOVED WITH SIGN STRUCTURE. WIRE TO BE REMOVED TO JUNCTION BOX ON PIER THAT REMAINS.

THE EXISTING UNDERPASS LUMINAIRES, SIGN LUMINAIRES AND LIGHT POLES THAT ARE REMOVED SHALL BE SALVAGED TO IDOT AND DELIVERED TO A DESIGNATION DETERMINED BY THE ENGINEER.

**LEGEND**

- E- EXISTING UNITDUCT/CONDUIT
- ⊙(R) EXISTING BRIDGE POLE TO BE REMOVED AND SALVAGED TO IDOT
- ⊙(E) EXISTING LUMINAIRE TO REMAIN
- ⊠ EXISTING LIGHTING CONTROLLER
- ⊠<sub>E</sub> EXISTING JUNCTION BOX (E= EXISTING TO REMAIN; R= TO REMOVE)

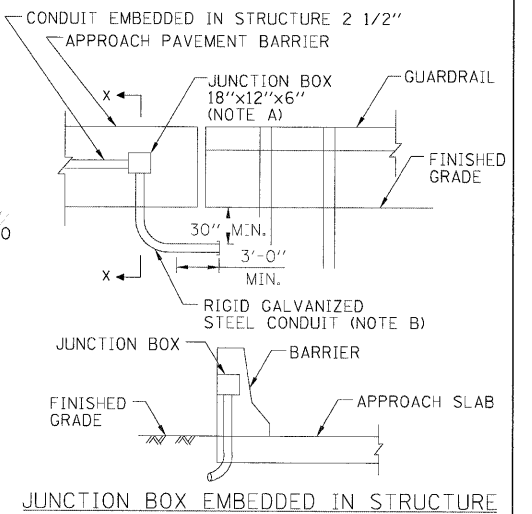
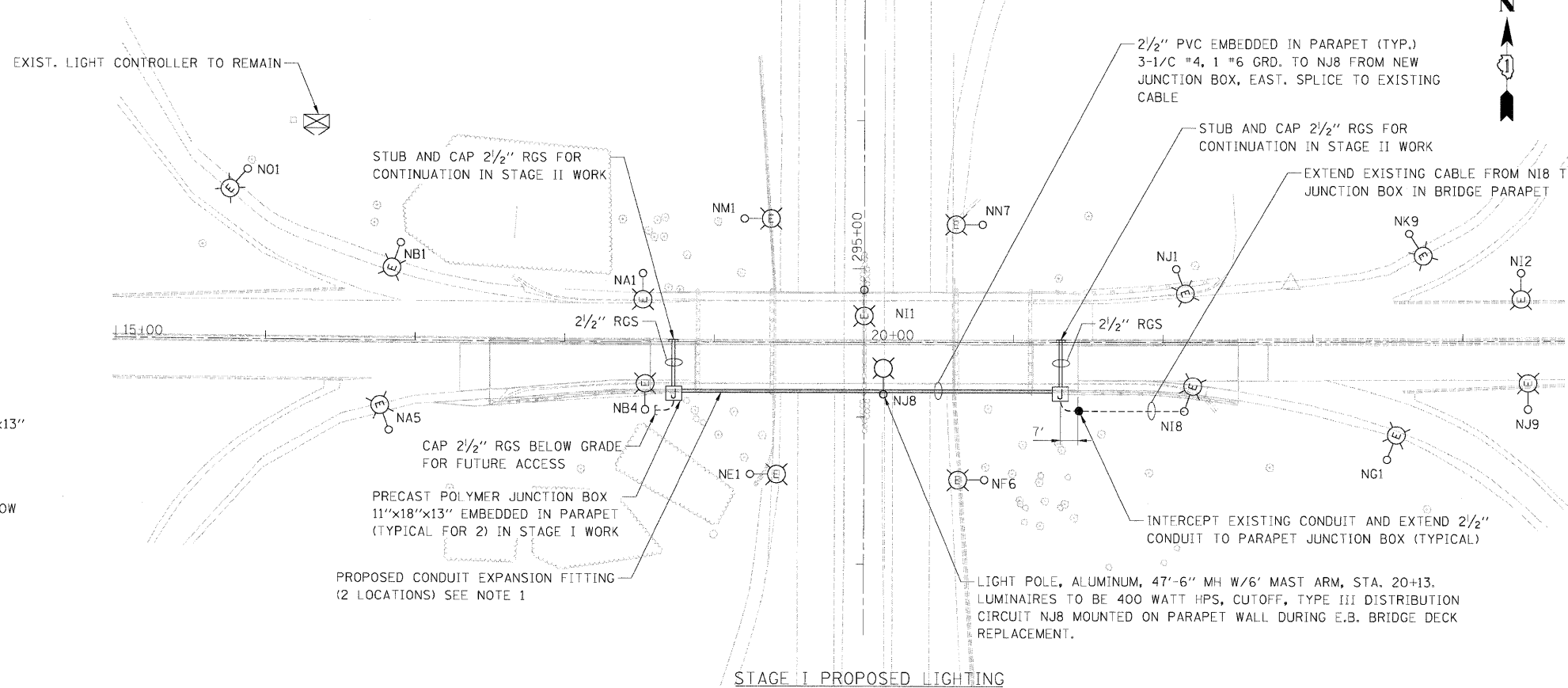


**NOTES**

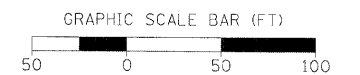
- PROPOSED CONDUIT EXPANSION FITTING ARE REQUIRED AT ALL LOCATIONS WHERE CONDUIT EXTENDS BETWEEN TWO CONCRETE SECTIONS THAT ARE CAPABLE OF MOVEMENT. THE EXPANSION FITTINGS SHALL COMPLY WITH STD. SPEC. ARTICLE 1088.020. COST INCLUDED WITH CONDUIT EMBEDDED IN STRUCTURE, 2 1/2" DIA. PVC (SCHEDULE 40).
- JUNCTION BOX SHALL BE EMBEDDED IN PARAPET - UPPER PORTION WITH COVER FACING US30 AND MUST BE ACCESSIBLE (TYP.) COORDINATE W/APPROACH PAVMT. SEE DETAIL THIS SHEET.

**LEGEND**

- 2 1/2" PVC CONDUIT EMBEDDED IN PARAPET UNLESS NOTED OTHERWISE
- ⊠ PROPOSED JUNCTION BOX EMBEDDED IN STRUCTURE, PRECAST POLYMER 11"x18"x13"
- ⊙(E) EXISTING LUMINAIRE TO REMAIN
- ⊙(R) PROPOSED ALUM. POLE 47'-6" MH W/400W HPS LUMINAIRE AND 6' MAST ARM
- ⊠ EXISTING LIGHTING CONTROLLER



- A. COORDINATE PLACEMENT OF JUNCTION BOX WITH GUARDRAIL BARRIER TERMINAL ATTACHMENT.
- B. COORDINATE CONDUIT PLACEMENT TO TERMINATE OUTSIDE OF PAVEMENT AND AVOID GUARDRAIL.
- C. COST OF RIGID GALVANIZED STEEL RACEWAY SHALL BE INCLUDED WITH CONDUIT EMBEDDED IN STRUCTURE.



**BOWMAN, BARRETT & ASSOCIATES INC.**  
 CONSULTING ENGINEERS  
 Chicago, Illinois  
 312.228.0100  
 www.bbandainc.com

FILE NAME = D160C05-sht-lightstg1.dgn	USER NAME = default	DESIGNED - RR	REVISED -
PLOT SCALE = sSCALEs	CHECKED - DF	DRAWN - LAM	REVISED -
PLOT DATE = 5/6/2009	DATE - 5/6/2009	CHECKED - DF	REVISED -

**STATE OF ILLINOIS  
 DEPARTMENT OF TRANSPORTATION**

**STAGE I EXISTING AND PROPOSED LIGHTING PLAN**

SCALE: 1" = 50' SHEET NO. 1 OF 12 SHEETS STA. 15+00.00 TO STA. 25+00.00

F.A. RTE.	SECTION	COUNTY	TOTAL SHEETS	SHEET NO.
0353	0303.1B-1	COOK	91	34
CONTRACT NO. 60C05				
FED. ROAD DIST. NO.		ILLINOIS FED. AID PROJECT		