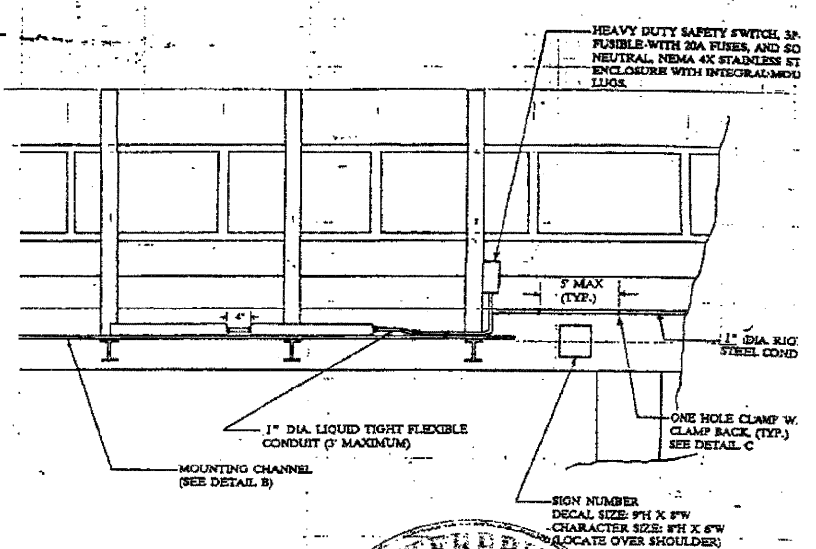
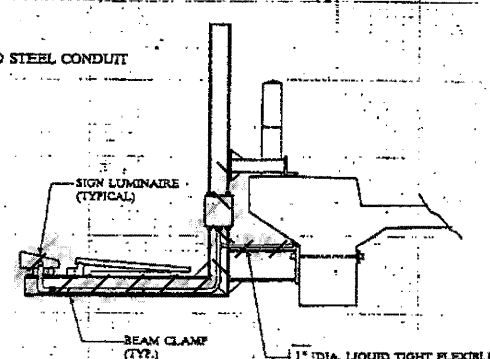
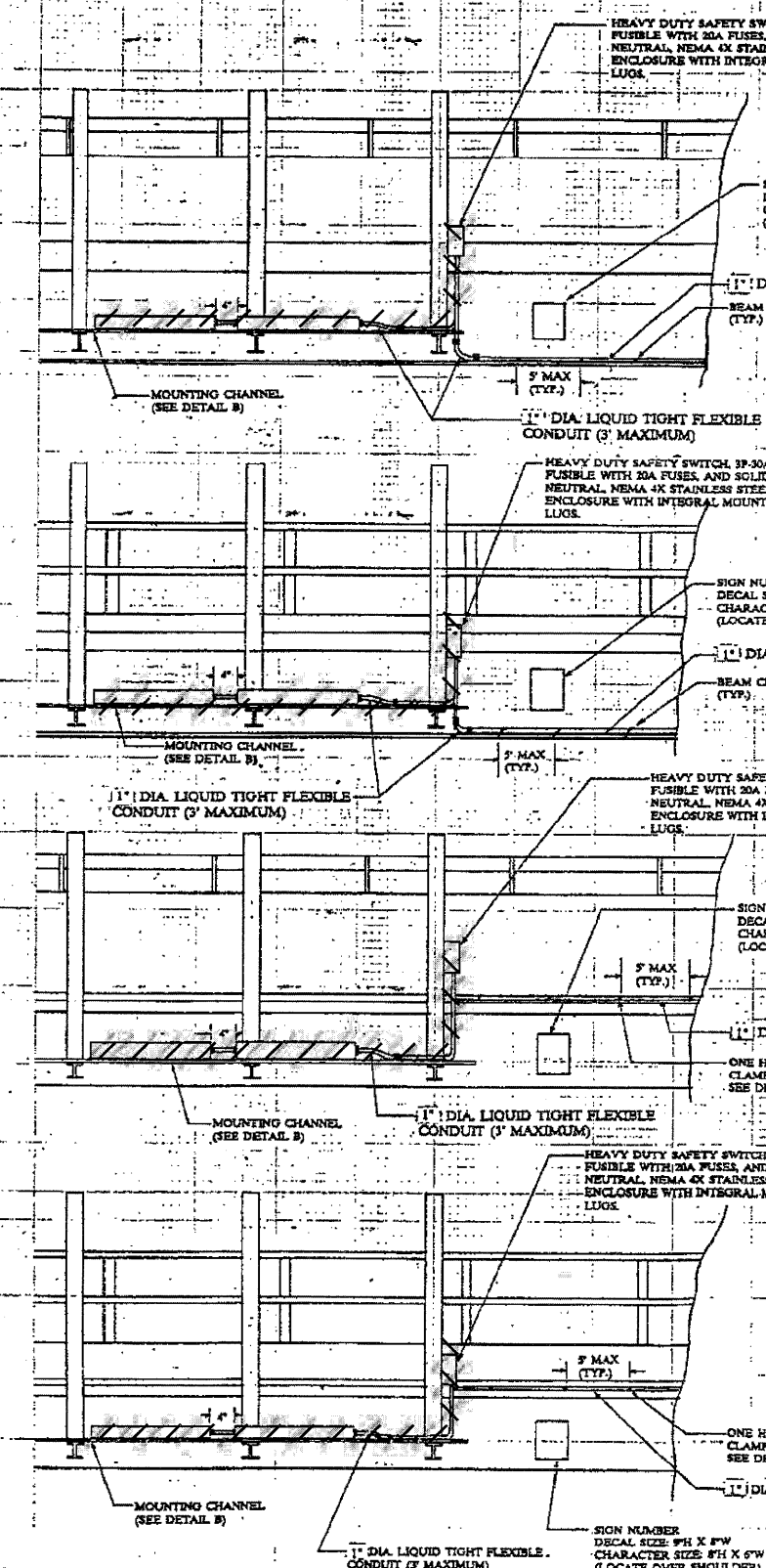
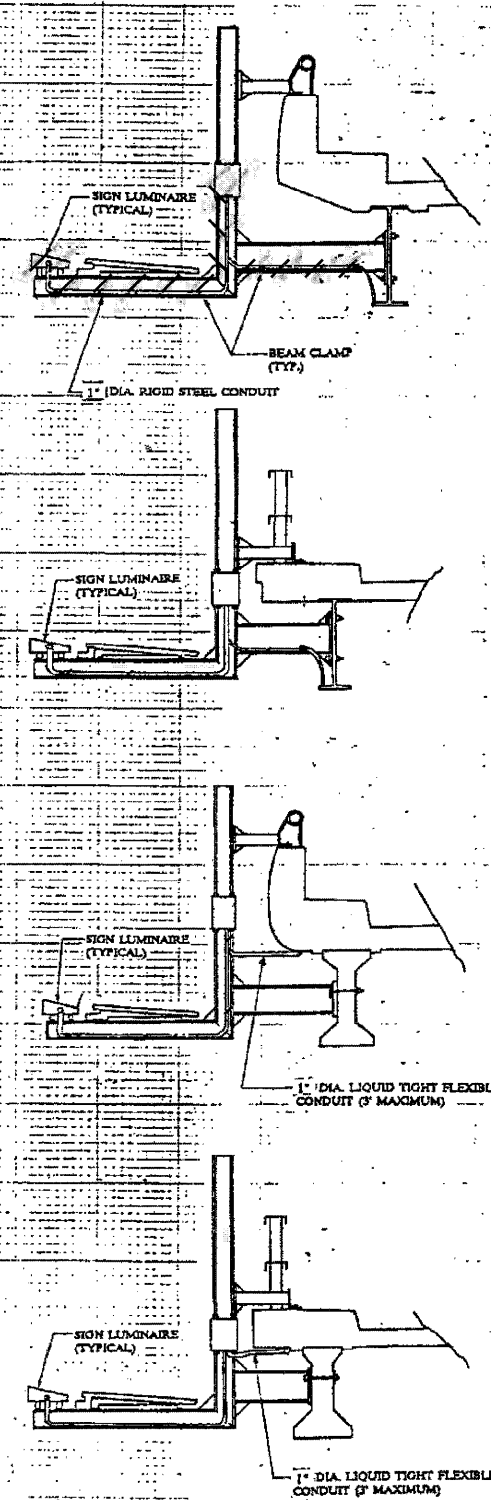
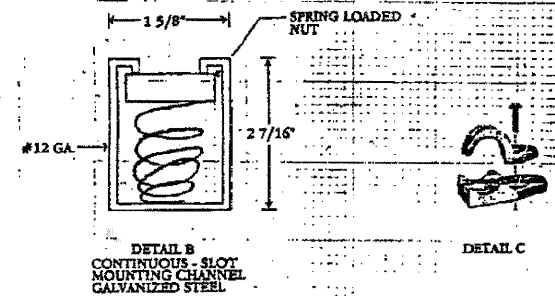
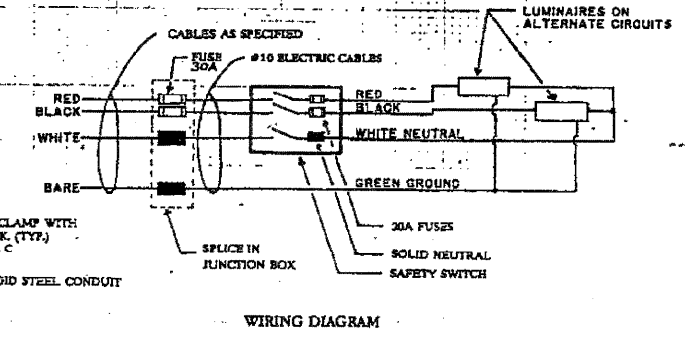
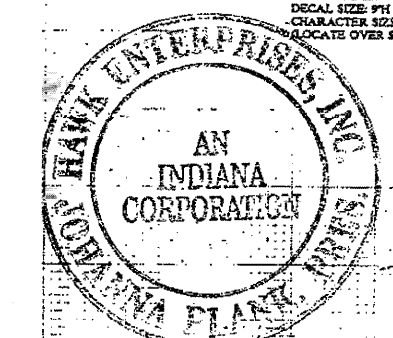


F.A. R.T.E.	SECTION	COUNTY	TOTAL SHEETS
0353	0303.1B-1	COOK	91
STA. 11+00	TO STA. 11+00		SHEET NO. 45
FED. ROAD DIST. NO. 7	ILLINOIS	FED. AID PROJECT	CONTRACT NO. 60C05



NOTE
 1. SIGN LIGHTING FIXTURES, CONDUIT, JUNCTION BOXES AND WIRE TO BE REMOVED WITH SIGN STRUCTURE WIRE TO BE REMOVED TO JUNCTION BOX ON PIER THAT REMAINS.



REVISIONS	
NAME	DATE

SCALE: VERT. _____
 HORIZ. _____
 DATE _____

DRAWN BY _____
 CHECKED BY _____

BOWMAN, BARRETT & ASSOCIATES INC.
 CONSULTING ENGINEERS
 Chicago, Illinois
 312.228.0100
 www.bbandainc.com

FOR INFORMATION ONLY

FILE NAME = D160C05-sh1-lightdet08.dgn	USER NAME = default	DESIGNED - RR	REVISED -
PLOT SCALE = #SCALE#	DRAWN - LAM	CHECKED - DF	REVISED -
PLOT DATE = 5/6/2009	DATE - 5/6/2009	REVISED -	REVISED -

STATE OF ILLINOIS
 DEPARTMENT OF TRANSPORTATION

ELECTRICAL CONNECTION TO SIGN STRUCTURE

SCALE: NTS SHEET NO. 12 OF 12 SHEETS STA. N/A TO STA. N/A

F.A. R.T.E.	SECTION	COUNTY	TOTAL SHEETS	SHEET NO.
0353	0303.1B-1	COOK	91	45
FED. ROAD DIST. NO. ILLINOIS FED. AID PROJECT			CONTRACT NO. 60C05	

m:\9100_05_coad\va30\cadd\sheet\160C05-sh1-lightdet08.dgn