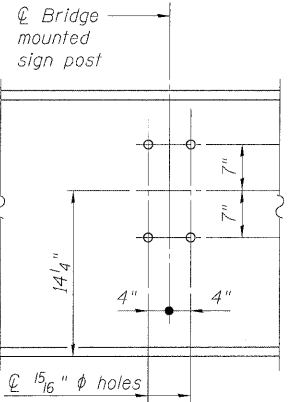
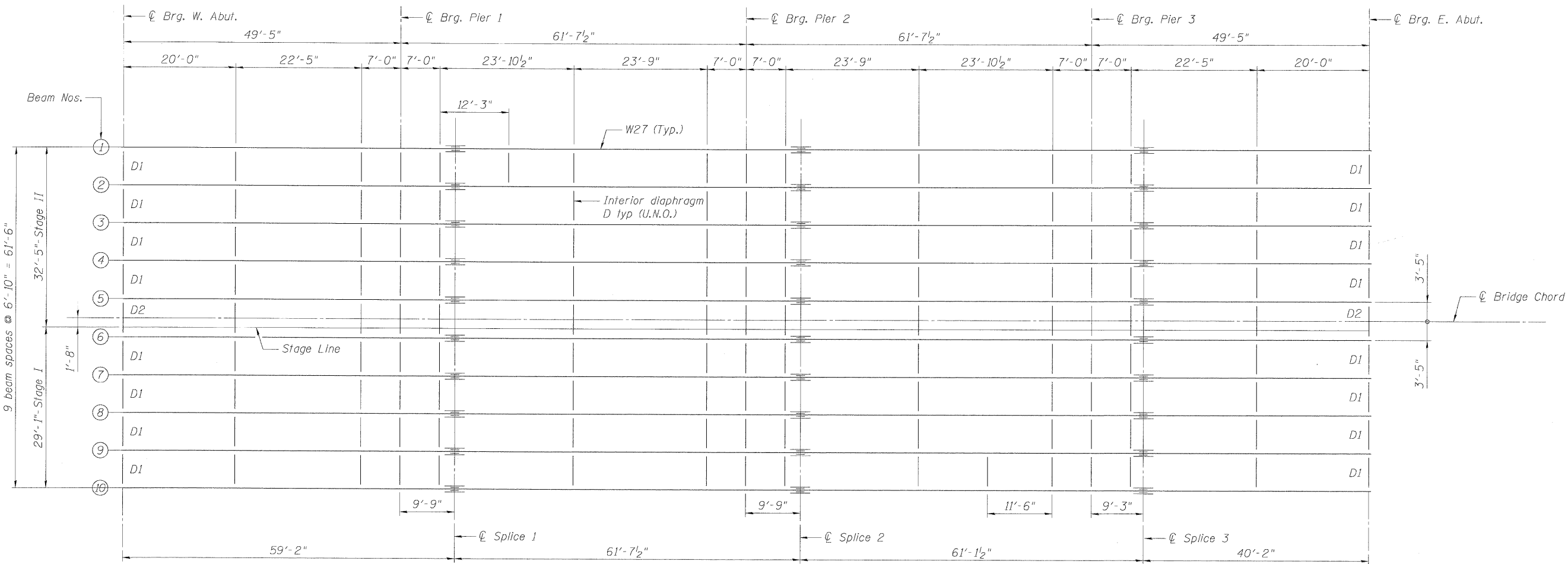
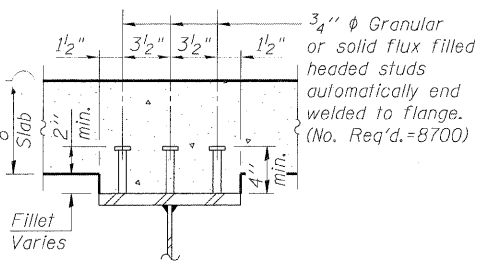


STATE OF ILLINOIS
DEPARTMENT OF TRANSPORTATION



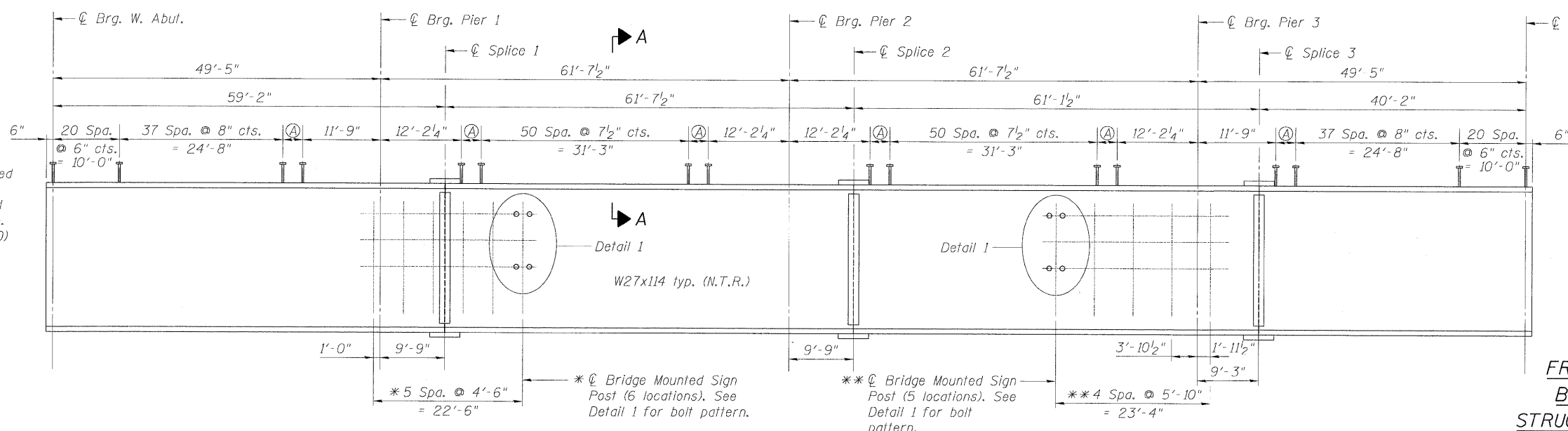
DETAIL 1

(Bolt pattern for bridge mounted sign post typical at all post locations)
See civil sheets for additional bridge mounted sign post details.



SECTION A-A

DESIGNED - DF
CHECKED - TAH
DRAWN - LAM
CHECKED - DF



* Beam 1 only
** Beam 10 only
Ⓐ 12 spaces @ 3" cts. = 3'-0"

BEAM ELEVATION

"NTR" denotes plates to which notch toughness requirements are applicable.

BOWMAN, BARRETT & ASSOCIATES INC.
CONSULTING ENGINEERS
Chicago, Illinois
312.228.0100
www.bbandainc.com
Job. No. 910



SHEET NO. S-16
S-30 SHEETS

F.A.P. RTE. 0353	SECTION 0303.1B-1	COUNTY COOK	TOTAL SHEETS 91	SHEET NO. 61
SN 016-0275		CONTRACT NO. 60C05		
FED. ROAD DIST. NO.		ILLINOIS FED. AID PROJECT		

**FRAMING PLAN AND
BEAM ELEVATION
STRUCTURE NO. 016-0275**

5/16/2008 9:20:08 AM S:\90105.DWG\A\30\A.CADD_Sheet\016-0275-60C05-06-EP.dwg