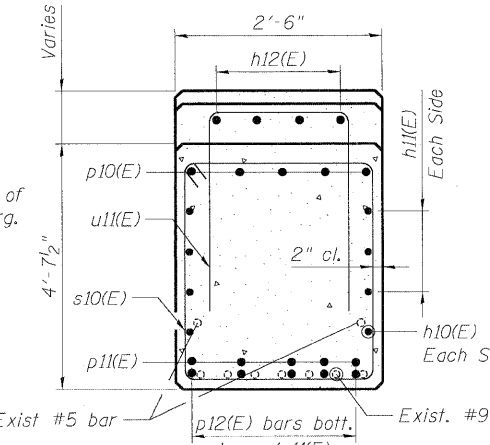
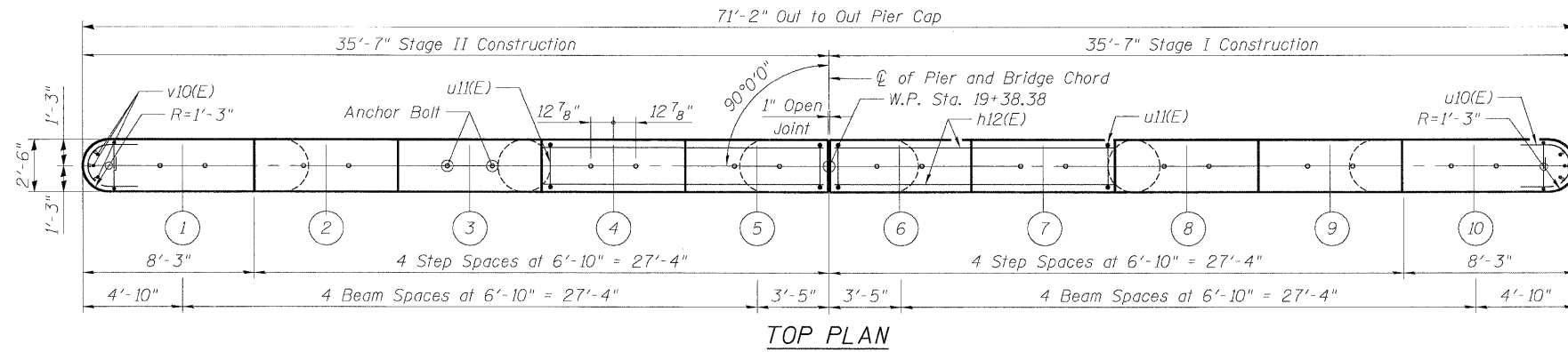
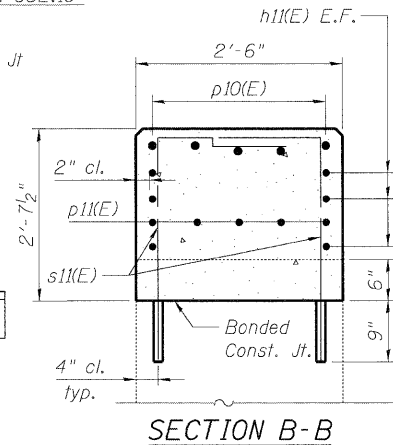
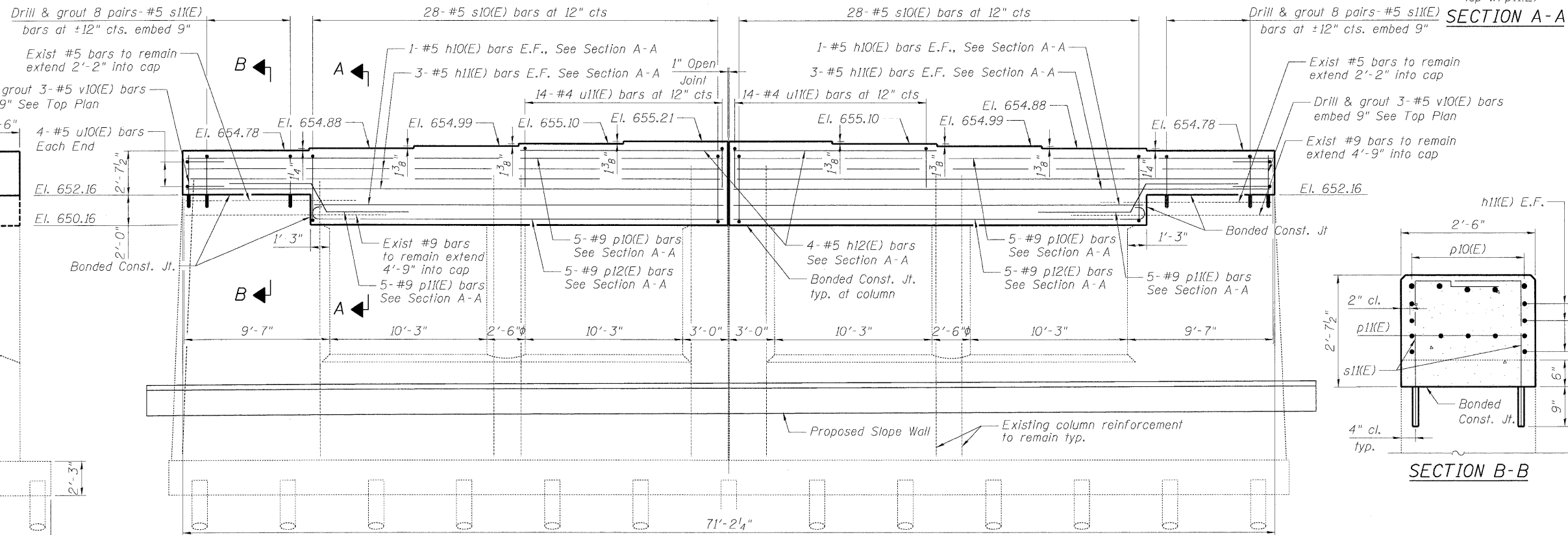


STATE OF ILLINOIS
DEPARTMENT OF TRANSPORTATION

PIER 1
BILL OF MATERIAL



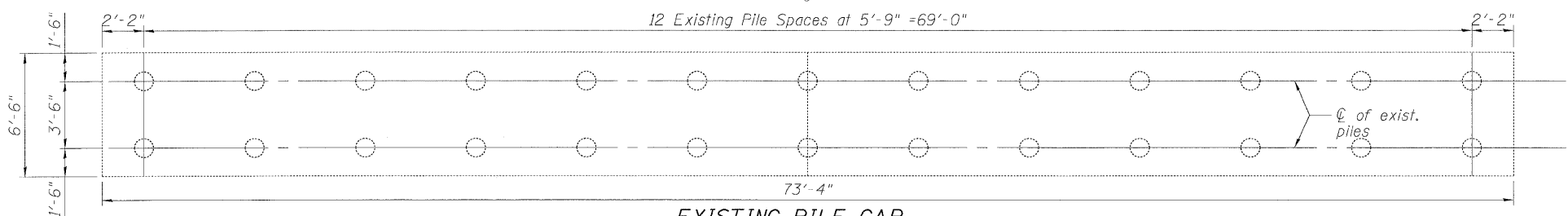
Bar	No.	Size	Length	Shape
h10(E)	4	#5	27'-0"	
h11(E)	12	#5	34'-1"	
h12(E)	8	#5	13'-4"	
p10(E)	10	#9	34'-1"	
p11(E)	10	#9	15'-2"	
p12(E)	10	#9	28'-3"	
s10(E)	56	#5	13'-9"	
s11(E)	32	#5	5'-3"	
u10(E)	8	#5	7'-9"	
u11(E)	28	#4	5'-2"	
v10(E)	6	#5	3'-3"	
Concrete Structures			Cu. Yd.	30.2
Reinforcement Bars, Epoxy Coated			Pound	4450
Concrete Sealer			Sq. Ft.	940



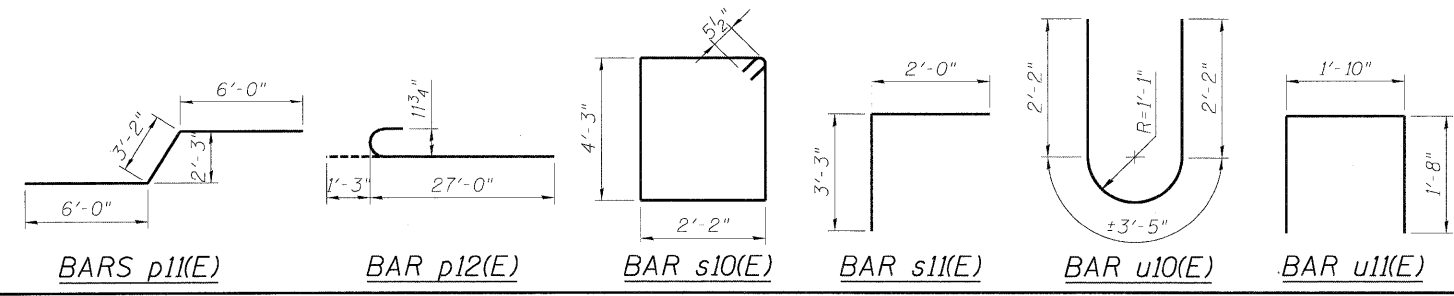
Notes:

- Space reinforcement in cap to miss anchor bolts.
- Existing reinforcement incorporated into new construction shall be cleaned and straightened. Cost included with Concrete Removal.
- All edges shall have standard 3/4" chamfers except as noted.
- Pour steps monolithically with cap.
- All construction joints shall be bonded.
- All existing vertical reinforcement in columns shall remain. Existing column reinforcement shall extend into cap min length of 2'-2".
- Existing Horizontal bottom 7- #9 bars shall lap with p(E) bars with a minimum lap of 4'-9".
- For exterior columns, saw cut & remove concrete to elevation 652.16. Retain existing vertical column bars & remove existing top 7- #9 bars. On the vertical face sawcut & remove 1'-3" of concrete on interior face as shown on Elevation view. Retain existing column reinforcement & horizontal 7- #9 bars.
- Concrete Sealer shall be applied to all surfaces of new concrete.
- Drill & epoxy grout #5s11(E) & v10(E) bars according to section 584 of the std. specs.
- Bar p11(E) should maintain 2" clearance from edge of concrete.
- For anchor bolts see bearing detail Sheet S-18 of S-30.

END VIEW



DESIGNED - TAH
CHECKED - DF
DRAWN - LAM
CHECKED - TAH



BOWMAN, BARRETT & ASSOCIATES INC.
CONSULTING ENGINEERS
Chicago, Illinois
312.228.0100
www.bbainc.com
Job. No. 910

SHEET NO. S-25 S-30 SHEETS	F.A.P. RTE.	SECTION	COUNTY	TOTAL SHEETS	SHEET NO.
	0353	0303.1B-1	COOK	91	70
SN 016-0275			CONTRACT NO. 60C05		
FED. ROAD DIST. NO.		ILLINOIS FED. AID PROJECT			

PIER 1 CAP MODIFICATIONS
STRUCTURE NO. 016-0275