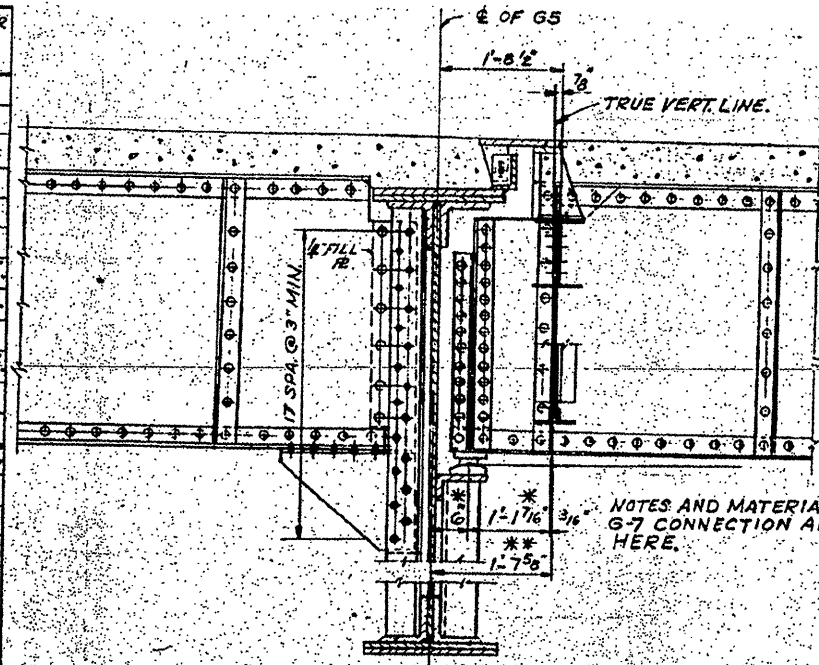


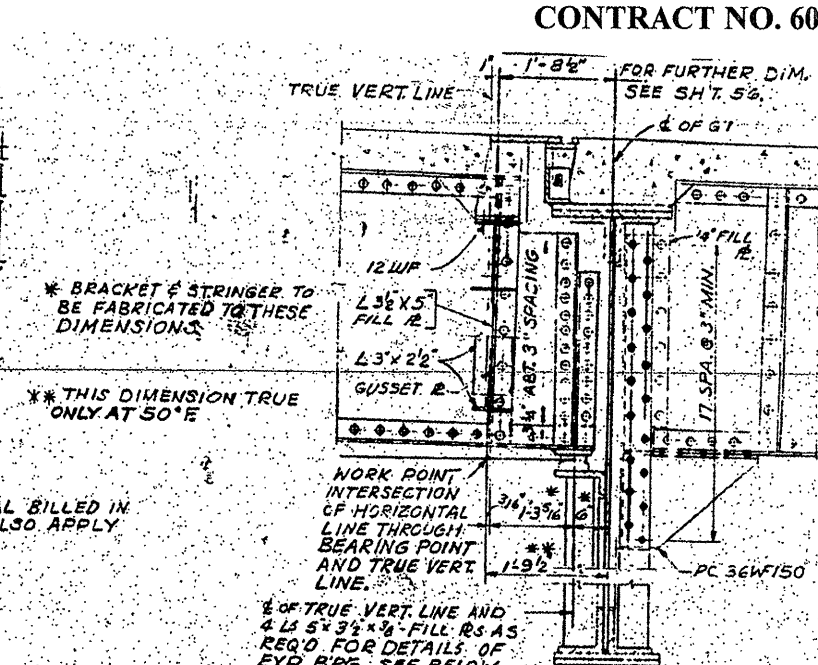
ROUTE VARIOUS	SECTION 2008-053 BP	COUNTY VARIOUS	TOTAL SHEETS 54	SHEET NUMBER 40
------------------	------------------------	-------------------	--------------------	--------------------

STEEL STRINGER SCHEDULE

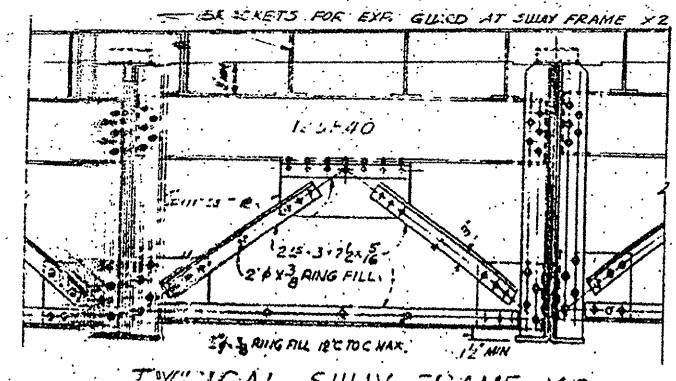
STEEL STRINGER NUMBER	DISTANCE E OF BEARING TO CROSS GIRDER	DISTANCE E OF BEARING TO CROSS GIRDER	TOP ANGLE	BOTTOM ANGLE	FIRST BOTTOM COVER PLATE	SECOND BOTTOM COVER PLATE	SHEAR CONNECTOR SPACING	RIVET SPACING				CAMBER DIM. Y.
								PANEL A	PANEL B	PANEL C	PANEL D	
SB 1	67'-0"		4x4 1/2	6x4 1/2	13x2x40-0		27@6' 9@9' 8@12' 15" MAX.	4"	4 1/2"	5"	6"	9/16"
SB 2	67'-1 1/2"		4x4 1/2	6x4 1/2	13x2x28-0		17@9' 7@12' 4@15' 18" MAX.	4"	4 1/2"	5"	6"	7/16"
SB 3	68'-3 3/8"		4x4 1/2	6x4 1/2	13x2x40-0		27@6' 9@9' 8@12' 15" MAX.	4"	4 1/2"	4 3/4"	5 1/2"	9/16"
SB 4	68'-3 3/8"		4x4 1/2	6x4 1/2	13x2x33-6		21@6' 11@9' 6@12' 4@15' 18" MAX.	4"	4 1/2"	4 3/4"	5 1/2"	7/16"
SB 5	67'-3 3/8"		4x4 1/2	6x4 1/2	13x2x33-6		21@6' 11@9' 6@12' 4@15' 18" MAX.	4"	4 1/2"	4 3/4"	5 1/2"	7/16"
SB 6	67'-3 3/8"		4x4 1/2	6x4 1/2	13x2x33-6		21@6' 11@9' 6@12' 4@15' 18" MAX.	4"	4 1/2"	4 3/4"	5 1/2"	7/16"
SB 7	66'-11 1/8"		4x4 1/2	6x4 1/2	13x2x31-6		30@6' 10@9' 8@12' 15" MAX.	4"	4 1/2"	5"	5 3/4"	1/2"
SB 7A												SB 7 9/16"
SB 7B												SB 7 8/16"
SB 7C												SB 7 7/16"
SB 8	65'-11 1/8"		4x4 1/2	6x4 1/2	13x2x13-0		8@18' 24" MAX.	4"	4 1/2"	5"	5 3/4"	3/4"
SB 9	65'-11 1/8"		4x4 1/2	6x4 1/2	13x2x13-0		8@18' 24" MAX.	4"	4 1/2"	5"	5 3/4"	3/4"
SB 10	65'-11 1/8"		4x4 1/2	6x4 1/2	13x2x13-0		8@18' 24" MAX.	4"	4 1/2"	5"	5 3/4"	3/4"
SB 11	71'-6 1/4"	DISTANCE E OF BEARING TO E OF BEARING	4x4 1/2	6x4 1/2	13x2x46-0		21@6' 15@9' 6@12' 5@15' 18" MAX.	4"	4 1/2"	4 3/4"	5 3/4"	5/8"
SB 12	71'-4 1/4"		4x4 1/2	6x4 1/2	13x2x46-0		21@6' 15@9' 6@12' 5@15' 18" MAX.	4"	4 1/2"	4 3/4"	5 3/4"	5/8"
SB 13	71'-3 3/4"		4x4 1/2	6x4 1/2	13x2x46-0	13x2x33-6	27@6' 14@9' 7@12' 15" MAX.	4"	4 1/2"	4 3/4"	5 3/4"	5/8"
SB 13A												SB 13 5/8"
SB 13B												SB 13 1/2"
SB 14	72'-2 3/4"		4x4 1/2	6x4 1/2	13x2x46-0		21@9' 5@12' 5@15' 18" MAX.	4"	4 1/2"	4 3/4"	5 3/4"	5/8"
SB 15	72'-2 3/4"		4x4 1/2	6x4 1/2	13x2x46-0		21@9' 5@12' 5@15' 18" MAX.	4"	4 1/2"	4 3/4"	5 3/4"	5/8"
SB 16	72'-2 3/4"		4x4 1/2	6x4 1/2	13x2x46-0		21@9' 5@12' 5@15' 18" MAX.	4"	4 1/2"	4 3/4"	5 3/4"	5/8"
SB 17	72'-2 3/4"		4x4 1/2	6x4 1/2	13x2x46-0		4@18' 24" MAX.	4"	4 1/2"	4 3/4"	5 3/4"	5/8"
SB 18	72'-2 3/4"		4x4 1/2	6x4 1/2	13x2x46-0	13x2x33-6	27@6' 14@9' 7@12' 15" MAX.	4"	4 1/2"	4 3/4"	5 3/4"	5/8"
SB 19	71'-9 1/4"		4x4 1/2	6x4 1/2	13x2x46-0		4@18' 24" MAX.	4"	4 1/2"	4 3/4"	5 3/4"	5/8"
SB 20	71'-9 1/4"		4x4 1/2	6x4 1/2	13x2x46-0	13x2x32-0	21@6' 15@9' 6@12' 5@15' 18" MAX.	4"	4 1/2"	4 3/4"	5 3/4"	5/8"
SB 21	54'-6 3/8"		4x4 1/2	6x4 1/2	13x2x17-0		18@6' 13@9' 4@12' 15" MAX.	4"	4 1/2"	4 3/4"	5 3/4"	3/8"
SB 22	55'-4 1/2"		4x4 1/2	6x4 1/2	13x2x17-0		22@6' 11@9' 5@12' 15" MAX.	4"	4 1/2"	5 1/4"	6"	3/8"
SB 23	55'-8 1/2"		4x4 1/2	6x4 1/2	13x2x17-0		15@6' 12@9' 5@12' 3@15' 18" MAX.	4"	4 1/2"	5 1/4"	6"	1/2"
SB 24	55'-11 1/2"		4x4 1/2	6x4 1/2	13x2x17-0		15@6' 12@9' 5@12' 3@15' 18" MAX.	4"	4 1/2"	5 1/4"	6"	1/2"
SB 25	56'-3 1/2"		4x4 1/2	6x4 1/2	13x2x17-0		15@6' 12@9' 5@12' 3@15' 18" MAX.	4"	4 1/2"	5 1/4"	6"	1/2"
SB 26	56'-7"		4x4 1/2	6x4 1/2	13x2x17-0		7@18' 24" MAX.	4"	4 1/2"	5 1/4"	6"	3/8"
SB 27	57'-2 3/8"		4x4 1/2	6x4 1/2	13x2x17-0		7@18' 24" MAX.	4"	4 1/2"	5 1/4"	6"	2"
SB 28	57'-6 3/8"		4x4 1/2	6x4 1/2	13x2x25-6		24@6' 8@9' 5@12' 3@15' 18" MAX.	4"	4 1/2"	5 1/4"	6"	5/16"
SB 29	57'-9 1/2"		4x4 1/2	6x4 1/2	13x2x25-6		24@6' 8@9' 5@12' 3@15' 18" MAX.	4"	4 1/2"	5 1/4"	6"	5/16"
SB 30	58'-1 1/2"		4x4 1/2	6x4 1/2	13x2x25-6		24@6' 8@9' 5@12' 3@15' 18" MAX.	4"	4 1/2"	5 1/4"	6"	5/16"
SB 31	58'-5 1/2"		4x4 1/2	6x4 1/2	13x2x25-6		24@6' 8@9' 5@12' 3@15' 18" MAX.	4"	4 1/2"	5 1/4"	6"	5/16"
SB 32	58'-9 1/2"		4x4 1/2	6x4 1/2	13x2x25-6		3@12' 5@15' 7@18' 24" MAX.	4"	4 1/2"	5 1/4"	6"	1/2"
SB 33	58'-11 3/8"		4x4 1/2	6x4 1/2	13x2x25-6		3@12' 5@15' 7@18' 24" MAX.	4"	4 1/2"	5 1/4"	6"	1/2"
SB 34	57'-2 1/2"		4x4 1/2	6x4 1/2	13x2x25-6		13@6' 12@9' 8@12' 2@15' 18" MAX.	4"	4 1/2"	5 1/4"	6"	5/16"
SB 35	57'-6 3/8"		4x4 1/2	6x4 1/2	13x2x25-6		13@6' 12@9' 8@12' 2@15' 18" MAX.	4"	4 1/2"	5 1/4"	6"	5/16"
SB 36	59'-9 3/8"		4x4 1/2	6x4 1/2	13x2x25-6		13@6' 12@9' 8@12' 2@15' 18" MAX.	4"	4 1/2"	5 1/4"	6"	5/16"
SB 37	60'-1 1/2"		4x4 1/2	6x4 1/2	13x2x29-6		25@6' 8@9' 5@12' 15" MAX.	4"	4 1/2"	5 1/4"	6"	1/2"
SB 38	59'-3 1/2"		4x4 1/2	6x4 1/2	13x2x29-6		25@6' 8@9' 5@12' 15" MAX.	4"	4 1/2"	5 1/4"	6"	1/2"
SB 39	59'-7"	DISTANCE E OF BEARING TO E OF BEARING	4x4 1/2	6x4 1/2	13x2x29-6		24@6' 8@9' 3@12' 15" MAX.	4"	4 1/2"	5 1/4"	6"	3/8"
SB 40	59'-10 1/2"		4x4 1/2	6x4 1/2	13x2x29-6		24@6' 8@9' 3@12' 15" MAX.	4"	4 1/2"	5 1/4"	6"	3/8"
SB 41	60'-2 3/8"		4x4 1/2	6x4 1/2	13x2x29-6		24@6' 8@9' 3@12' 15" MAX.	4"	4 1/2"	5 1/4"	6"	3/8"
SB 42	69'-5 3/8"		4x4 1/2	6x4 1/2	13x2x29-6		24" MAX.	4"	4 1/2"	4 3/4"	5 1/2"	7/8"
SB 43	69'-5 3/8"		4x4 1/2	6x4 1/2	13x2x31-0	13x2x22-0	27@6' 14@9' 7@12' 15" MAX.	4"	4 1/2"	4 3/4"	5 1/2"	1/2"
SB 44	70'-5 3/8"		4x4 1/2	6x4 1/2	13x2x38-0		4@18' 24" MAX.	4"	4 1/2"	4 3/4"	5 1/2"	SB 44 9/16"
SB 45	70'-5 3/8"		4x4 1/2	6x4 1/2	13x2x42-0	13x2x28-6	22@6' 15@9' 6@12' 5@15' 18" MAX.	4"	4 1/2"	4 3/4"	5 1/2"	7/16"
SB 46	54'-6 1/2"		4x4 1/2	6x4 1/2	13x2x47-0		6@12' 4@15' 6@18' 24" MAX.	4"	4 1/2"	5 1/2"	6"	3/8"
SB 47	54'-6 1/2"		4x4 1/2	6x4 1/2	13x2x47-0		18@6' 13@9' 4@12' 15" MAX.	4"	4 1/2"	5 1/2"	6"	7/16"
SB 48	54'-6 1/2"		4x4 1/2	6x4 1/2	13x2x47-0		18@6' 13@9' 4@12' 15" MAX.	4"	4 1/2"	5 1/2"	6"	7/16"
SB 49	55'-6 1/2"		4x4 1/2	6x4 1/2	13x2x47-0		18@6' 13@9' 4@12' 15" MAX.	4"	4 1/2"	5 1/2"	6"	3/16"
SB 50	55'-6 1/2"		4x4 1/2	6x4 1/2	13x2x47-0		18@6' 13@9' 4@12' 15" MAX.	4"	4 1/2"	5 1/2"	6"	1/4"
SB 51	58'-5 1/2"		4x4 1/2	6x4 1/2	13x2x32-0		21@6' 8@9' 6@12' 15" MAX.	4"	4 1/2"	5 1/2"	6"	1/4"
SB 52	58'-4 1/2"		4x4 1/2	6x4 1/2	13x2x28-0		22@6' 8@9' 7@12' 15" MAX.	4"	4 1/2"	5 1/2"	6"	5/16"
SB 53	58'-4 1/2"		4x4 1/2	6x4 1/2	13x2x28-0		22@6' 8@9' 7@12' 15" MAX.	4"	4 1/2"	5 1/2"	6"	5/16"
SB 54	67'-0 3/8"		4x4 1/2	6x4 1/2	13x2x28-0		22@6' 8@9' 7@12' 15" MAX.	4"	4 1/2"	5 1/2"	6"	5/16"
SB 55	68'-3 3/8"		4x4 1/2	6x4 1/2	13x2x28-0		27@6' 9@9' 8@12' 15" MAX.	4"	4 1/2"	5 1/2"	6"	1/2"
SB 56	66'-11 1/8"		4x4 1/2	6x4 1/2	13x2x28-0		50@6' 10@9' 8@12' 15" MAX.	4"	4 1/2"	5"	5 3/4"	1/2"
SB 57	70'-5 3/8"		4x4 1/2	6x4 1/2	13x2x28-0		22@6' 15@9' 6@12' 5@15' 18" MAX.	4"	4 1/2"	4 3/4"	5 1/2"	7/16"
SB 58	55'-6 1/2"		4x4 1/2	6x4 1/2	13x2x28-0		18@6' 13@9' 4@12' 15" MAX.	4"	4 1/2"	5 1/2"	6"	1/4"
SB 59	58'-4 1/2"		4x4 1/2	6x4 1/2	13x2x28-0		22@6' 8@9' 7@12' 15" MAX.	4"	4 1/2"	5 1/2"	6"	5/16"



TYPICAL STRINGER-GIRDER CONNECTION AT G-5
SCALE: 3/4" = 1'-0"



TYPICAL STRINGER-GIRDER CONNECTION AT G-7
SCALE: 3/4" = 1'-0"



TYPICAL SULWAY FRAME X2
(SUBSTIT. FE. M/E X3 SAME EXCEPT AS NOTED)
SCALE: 3/4" = 1'-0"

NOTE!
ALL WEB PLATES ARE 48" X 3/8"

LOCATION NO. 8
EXIST. BRIDGE PLANS
I-90/94 OVER ASHLAND AVE.
SN 016-0133