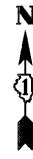
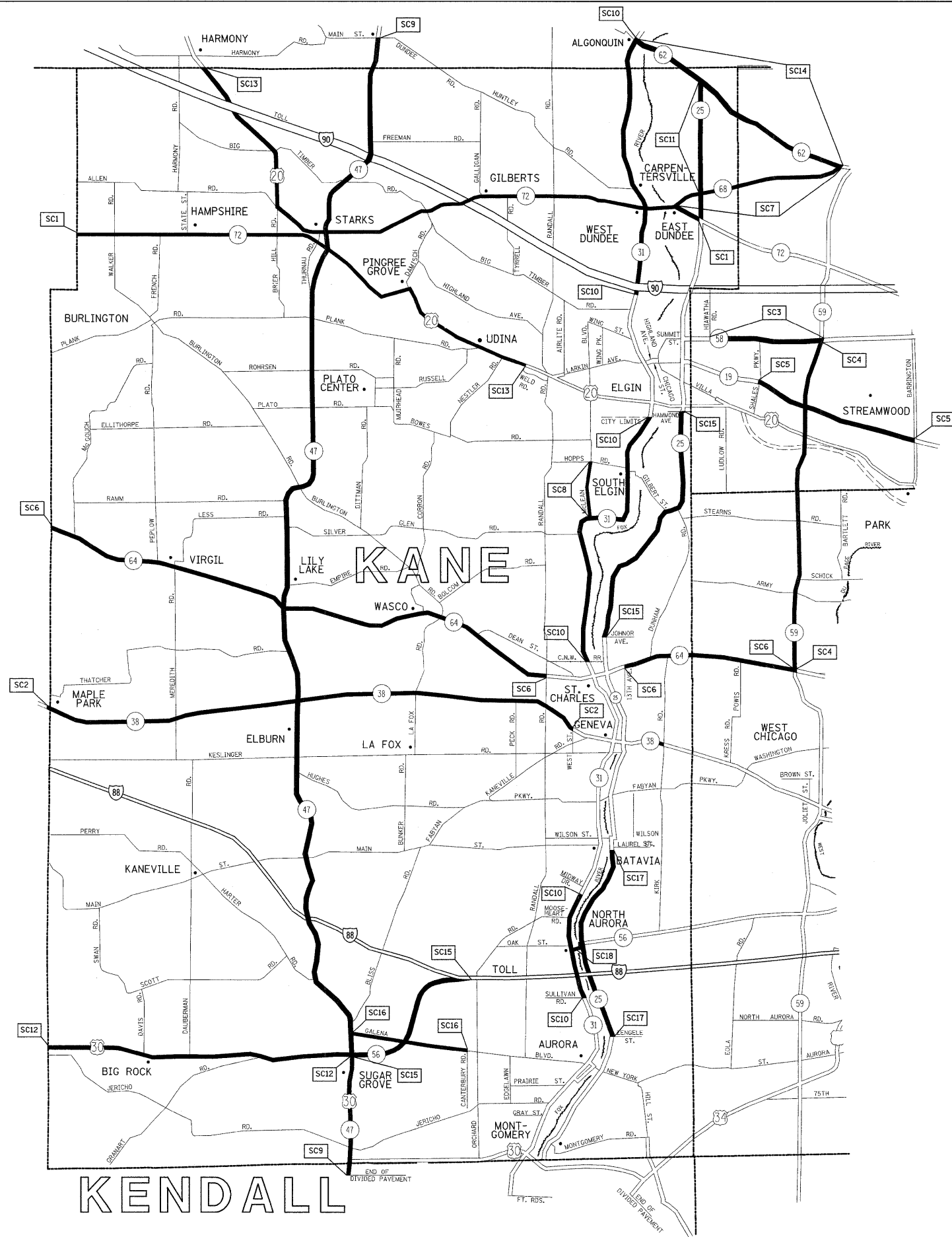


F.A. RTE.	SECTION	COUNTY	TOTAL SHEETS	SHEET NO.
VAR.	2009-041 I	*	26	13
STA.		TO STA.		
FED. ROAD DIST. NO.	ILLINOIS	FED. AID PROJECT		

\*COOK, DU PAGE, KANE, LAKE, MC HENRY AND WILL



TEAM SECTION	KEY LOCATIONS
ST. CHARLES	SC1 - SC18

- DISTRICT NO. 1
- STATE HIGHWAYS & EXPRESSWAYS WITHIN STATE JURISDICTION (EXCEPT TOLLWAYS)
  - STATE HIGHWAYS & EXPRESSWAYS TO BE CLEANED
  - FUTURE HIGHWAYS
  - VARIOUS AGENCIES HIGHWAYS

REVISIONS	
NAME	DATE

ILLINOIS DEPARTMENT OF TRANSPORTATION  
**ARTERIAL CLEANING  
 LOCATION MAP  
 KANE COUNTY  
 ST. CHARLES TEAM SECTION**

SCALE: VERT. \_\_\_\_\_  
 DATE: \_\_\_\_\_

DRAWN BY \_\_\_\_\_  
 CHECKED BY \_\_\_\_\_

PLOT DATE = 5/21/2009  
 FILE NAME = c:\p\work\k-pw\DOT\VID\JA\38136184 SweepingContract42889.dgn  
 PLOT SCALE = 52.9412 / IN.  
 USER NAME = mdsjg