

F.A. RTE. VAR.	SECTION	COUNTY	TOTAL SHEETS	SHEET NO.
	2009-041 I	*	26	1

\* COOK, DU PAGE, LAKE, KANE, McHENRY AND WILL

STATE OF ILLINOIS  
DEPARTMENT OF TRANSPORTATION  
DIVISION OF HIGHWAYS

**PROPOSED  
HIGHWAY PLANS**

FOR INDEX OF SHEETS, SEE SHEET NO. 2

ROUTE: VARIOUS DISTRICT ONE  
SECTION: 2009-041I

COUNTY: VARIOUS (COOK, DUPAGE, LAKE, KANE, McHENRY AND WILL)  
EXPRESSWAY & ARTERIAL HIGHWAY CLEANING ( SWEEPING)  
C-91-478-09

D-91-478-09



LOCATION MAPS - SEE INDEX OF SHEETS

STATE OF ILLINOIS  
DEPARTMENT OF TRANSPORTATION  
DIVISION OF HIGHWAYS

SUBMITTED May 20, 2009  
Devin M. D'Keefe  
DEPUTY DIRECTOR OF HIGHWAYS, REGION ENGINEER

June 26, 2009  
Charles J. Ingersoll  
ENGINEER OF DESIGN AND ENVIRONMENT

June 26, 2009  
Christine M. Reed  
DIRECTOR OF HIGHWAYS, CHIEF ENGINEER

PRINTED BY THE AUTHORITY OF THE STATE OF ILLINOIS

J.U.L.I.E.  
JOINT UTILITY LOCATION INFORMATION FOR EXCAVATION  
1-800-892-0123

CONTRACT NO. 60G47

DISTRICT ONE/ BUREAU OF DESIGN PLAN PREPARATION ENGINEER: K. ENG/ R. BORO (847) 705-4178

F.A. RTE.	SECTION	COUNTY	TOTAL SHEETS	SHEET NO.
VAR.	2009-041 I	*	26	2
STA.		TO STA.		
FED. ROAD DIST. NO.	ILLINOIS	FED. AID PROJECT		

\* COOK, DU PAGE, KANE, LAKE, MC HENRY AND WILL

INDEX OF SHEETS

1. TITLE SHEET
2. INDEX OF SHEETS  
APPLICABLE STATE STANDARDS
3. SUMMARY OF QUANTITIES  
SCHEDULE OF CLEANING STARTING DATES
4. EXPRESSWAY TYPICAL SECTIONS
5. ARTERIAL TYPICAL SECTIONS
6. LIMITS OF SIGN CLEANING
7. EXPRESSWAY CLEANING: I-290 EXTENSION/ ILL 53, EDENS,  
KENNEDY & ELGIN-O'HARE
8. EXPRESSWAY CLEANING: EISENHOWER, STEVENSON, I-55 & DAN RYAN
9. EXPRESSWAY CLEANING: BISHOP FORD, KINGERY, I-55, I-57 & I-80
10. ARTERIAL CLEANING: McHENRY COUNTY  
WOODSTOCK TEAM SECTION
11. ARTERIAL CLEANING: LAKE COUNTY  
GRAYSLAKE TEAM SECTION
12. ARTERIAL CLEANING: LAKE COUNTY  
GURNEE TEAM SECTION
13. ARTERIAL CLEANING: KANE COUNTY  
ST. CHARLES TEAM SECTION
14. ARTERIAL CLEANING: COOK COUNTY  
ARLINGTON HEIGHTS TEAM SECTION
15. ARTERIAL CLEANING: COOK COUNTY  
NORTHBROOK TEAM SECTION
16. ARTERIAL CLEANING: COOK COUNTY  
NORTHSIDE TEAM SECTION
17. ARTERIAL CLEANING: COOK COUNTY  
RODENBURG TEAM SECTION
18. ARTERIAL CLEANING: COOK COUNTY  
HILLSIDE TEAM SECTION
19. ARTERIAL CLEANING: COOK COUNTY  
HARVEY TEAM SECTION
20. ARTERIAL CLEANING: COOK COUNTY  
ALSIP TEAM SECTION
21. ARTERIAL CLEANING: DuPAGE COUNTY  
NAPERVILLE TEAM SECTION
22. ARTERIAL CLEANING: DuPAGE COUNTY  
OAKBROOK TEAM SECTION
23. ARTERIAL CLEANING: WILL COUNTY  
JOLIET TEAM SECTION
24. ARTERIAL CLEANING: WILL COUNTY  
NEW LENOX TEAM SECTION
25. DISTRICT ONE DETAILS: TRAFFIC CONTROL DEVICES FOR  
HIGHWAY AND SIGN CLEANING OPERATIONS-DAY TIME ONLY
26. TRAFFIC CONTROL DETAILS FOR SHOULDER CLOSURES  
AND PARTIAL RAMP CLOSURES

STATE STANDARDS

- 701001-02 OFF-ROAD OPERATION 2L, 2W, 15' MIN. AWAY FOR SPEEDS >45 MPH
- 701006-03 OFF-ROAD OPERATION 2L, 2W, 15' TO PAVEMENT EDGE FOR SPEEDS >45 MPH
- 701011-02 OFF-ROAD MOVING OPERATION 2L, 2W, DAY ONLY
- 701101-02 OFF-ROAD OPERATIONS, MULTILANE, 15' TO 24" FORM PAVEMENT EDGE
- 701301-03 LANE CLOSURE, 2L 2W, SHORT TIME OPERATIONS
- 701311-03 LANE CLOSURE, 2L 2W, MOVING OPERATIONS - DAY ONLY
- 701400-03 APPROACH TO LANE CLOSURE, FREEWAY/EXPRESSWAY
- 701401-05 LANE CLOSURE, FREEWAY/EXPRESSWAY
- 701411-05 LANE CLOSURE, MULTILANE AT ENTERANCE/EXIT RAMP FOR SPEEDS >45 MPH
- 701426-03 LANE CLOSURE, MULTILANE INTERMITTENT OR MOVING OPERATION FOR SPEEDS >45 MPH
- 701901-01 TRAFFIC CONTROL DEVICES

PLOT DATE = 5/21/2009  
 FILE NAME = c:\pwwork\pwwork\PROJECT\MDT\JA\2009041\SSweepingContract\2009.dgn  
 USER NAME = mrajje

REVISIONS		ILLINOIS DEPARTMENT OF TRANSPORTATION
NAME	DATE	
		INDEX OF SHEETS AND STATE STANDARDS

SCALE: VERT. \_\_\_\_\_  
 HORIZ. \_\_\_\_\_  
 DATE \_\_\_\_\_

DRAWN BY \_\_\_\_\_  
 CHECKED BY \_\_\_\_\_

F.A. RTE.	SECTION	COUNTY	TOTAL SHEETS	SHEET NO.
VAR.	2009-041 I	*	26	3
STA.		TO STA.		
FED. ROAD DIST. NO.	ILLINOIS	FED. AID PROJECT		

\*COOK, DU PAGE, KANE, LAKE, MC HENRY AND WILL

SUMMARY OF QUANTITIES

CODE NO.	ITEM	UNIT	MAIN QUANTITY
X0323141	SUPPLEMENTAL SWEEPING	MILE	1430
X0329915	FULL EXPRESSWAY CLEANING CYCLE	EACH	12
X0330600	FULL ARTERIAL CLEANING CYCLE	EACH	3
X0414200	SIGN CLEANING CYCLE	EACH	1
X0326643	LITTER PICKING	EACH	12

URBAN  
100% STATE

EXPRESSWAY CLEANING SCHEDULE OF STARTING DATES - 2010

1st FULL CLEANING CYCLE	----	MARCH 1
2nd FULL CLEANING CYCLE	----	MAY 1
3rd FULL CLEANING CYCLE	----	MAY 20
4th FULL CLEANING CYCLE	----	JUNE 9
5th FULL CLEANING CYCLE	----	JUNE 28
6th FULL CLEANING CYCLE	----	JULY 17
7th FULL CLEANING CYCLE	----	AUGUST 5
8th FULL CLEANING CYCLE	----	AUGUST 25
9th FULL CLEANING CYCLE	----	SEPTEMBER 14
10th FULL CLEANING CYCLE	----	OCTOBER 3
11th FULL CLEANING CYCLE	----	OCTOBER 22
12th FULL CLEANING CYCLE	----	NOVEMBER 10
(RECOMMENDED TO BE COMPLETED ON OR BEFORE NOVEMBER 30)		

EXPRESSWAY CLEANING SCHEDULE OF STARTING DATES - 2011

1st FULL CLEANING CYCLE	----	MARCH 1
2nd FULL CLEANING CYCLE	----	MAY 1
3rd FULL CLEANING CYCLE	----	MAY 20
4th FULL CLEANING CYCLE	----	JUNE 9
5th FULL CLEANING CYCLE	----	JUNE 28
6th FULL CLEANING CYCLE	----	JULY 17
7th FULL CLEANING CYCLE	----	AUGUST 5
8th FULL CLEANING CYCLE	----	AUGUST 25
9th FULL CLEANING CYCLE	----	SEPTEMBER 14
10th FULL CLEANING CYCLE	----	OCTOBER 3
11th FULL CLEANING CYCLE	----	OCTOBER 22
12th FULL CLEANING CYCLE	----	NOVEMBER 10
(RECOMMENDED TO BE COMPLETED ON OR BEFORE NOVEMBER 30)		

ARTERIAL CLEANING SCHEDULE OF ANTICIPATED STARTING DATES - 2010

INITIAL CLEANING CYCLE	----	MARCH 1
1st FULL CLEANING CYCLE	----	JUNE 25
2nd FULL CLEANING CYCLE	----	SEPTEMBER 12 (RECOMMENDED TO BE COMPLETED ON OR BEFORE NOVEMBER 30)

ARTERIAL CLEANING SCHEDULE OF ANTICIPATED STARTING DATES - 2011

INITIAL CLEANING CYCLE	----	MARCH 1
1st FULL CLEANING CYCLE	----	JUNE 25
2nd FULL CLEANING CYCLE	----	SEPTEMBER 12 (RECOMMENDED TO BE COMPLETED ON OR BEFORE NOVEMBER 30)

SIGN CLEANING CYCLES SCHEDULE OF STARTING DATES - 2010

SIGN CLEANING CYCLE	----	MARCH 1
---------------------	------	---------

SIGN CLEANING CYCLES SCHEDULE OF STARTING DATES - 2011

SIGN CLEANING CYCLE	----	MARCH 1
---------------------	------	---------

NOTES:

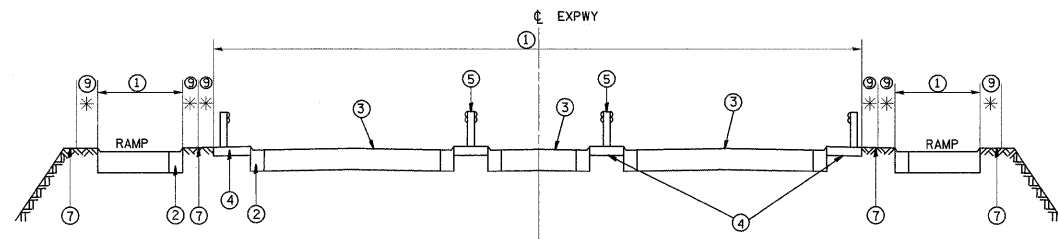
- SCHEDULE MAY VARY AS DIRECTED BY THE ENGINEER.
- THE CONTRACTOR MAY NOT START CLEANING CYCLES BEFORE THE DATES SCHEDULED IN THE PLANS WITHOUT WRITTEN AUTHORIZATION FROM THE ENGINEER.
- NO WORK WILL BE ALLOWED DURING ANY LEGAL HOLIDAY PERIOD.
- ALL SCHEDULES OF ANTICIPATED STARTING DATES SHOWN ARE TENTATIVE AS DETERMINE BY THE DEPARTMENT'S OPERATIONAL NEEDS.

REVISIONS		ILLINOIS DEPARTMENT OF TRANSPORTATION
NAME	DATE	
		SUMMARY OF QUANTITIES AND SCHEDULE OF STARTING DATES

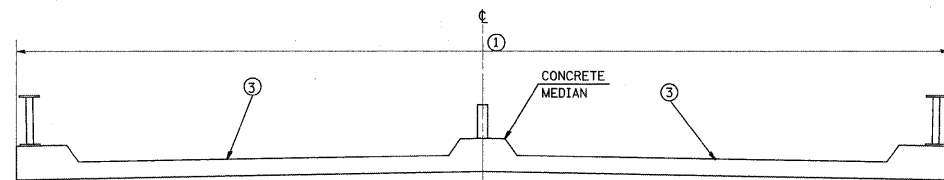
SCALE: VERT. DATE  
HORIZ. DRAWN BY CHECKED BY

F.A. RTE.	SECTION	COUNTY	TOTAL SHEETS	SHEET NO.
VAR.	2009-041 I	*	26	4
STA.	TO STA.			
FED. ROAD DIST. NO.	ILLINOIS	FED. AID PROJECT		

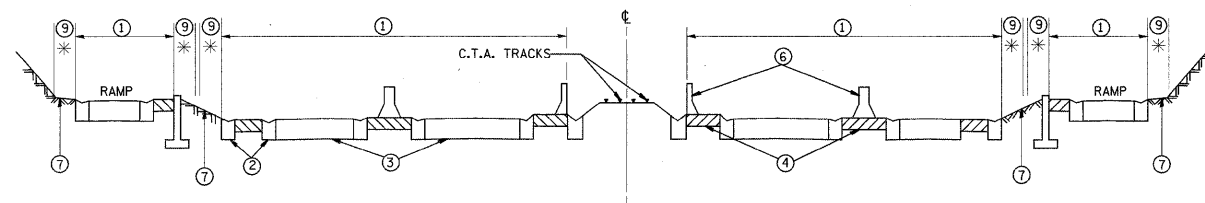
\*COOK, DU PAGE, KANE, LAKE, MC HENRY AND WILL



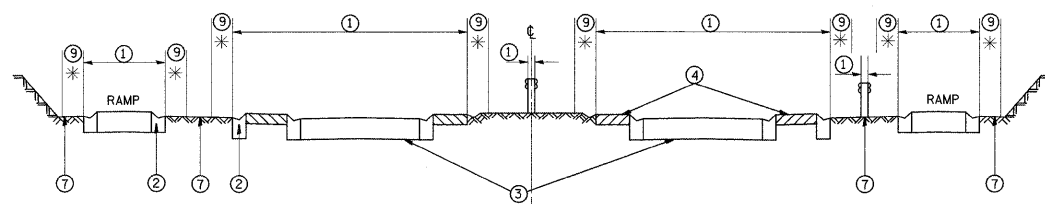
TYPICAL EXPRESSWAY CROSS-SECTION NO. 1



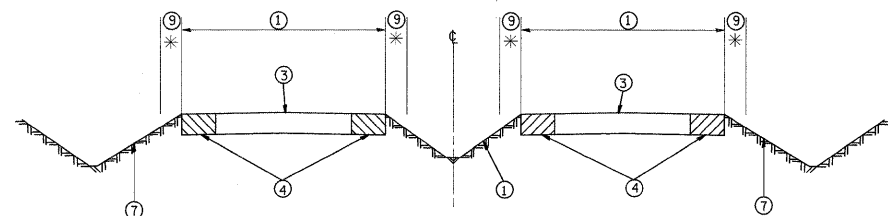
TYPICAL CROSS-SECTION OF ELEVATED ROADWAY  
TYPICAL EXPRESSWAY CROSS-SECTION NO. 2



TYPICAL EXPRESSWAY CROSS-SECTION NO. 3



TYPICAL EXPRESSWAY CROSS-SECTION NO. 4



TYPICAL EXPRESSWAY CROSS-SECTION NO. 5

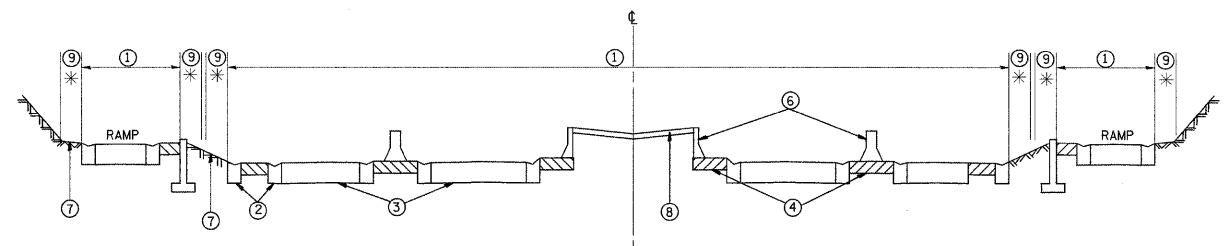
LEGEND

- ① AREA OF ROADWAY CLEANING AND RUBBISH REMOVAL
- ② CURB AND GUTTER
- ③ TRAVELED ROADWAY
- ④ STABILIZED SHOULDER OR MEDIAN
- ⑤ STEEL PLATE GUARD RAIL
- ⑥ CONCRETE BARRIER
- ⑦ NON STABILIZED SURFACE
- ⑧ RAISED CONCRETE MEDIAN
- ⑨ LITTER PICKING

NOTE: SLOPE WALLS UNDER BRIDGES ARE NOT INCLUDED IN AREAS TO BE CLEANED. DEBRIS SHALL BE REMOVED FROM ALL STABILIZED AREAS AND UNDER ALL GUARDRAIL.

LEGEND

\*: 10' (TYP.)



TYPICAL EXPRESSWAY CROSS-SECTION NO. 6

REVISIONS	
NAME	DATE

ILLINOIS DEPARTMENT OF TRANSPORTATION

TYPICAL EXPRESSWAY CROSS-SECTIONS

SCALE: VERT. DATE  
HORIZ.

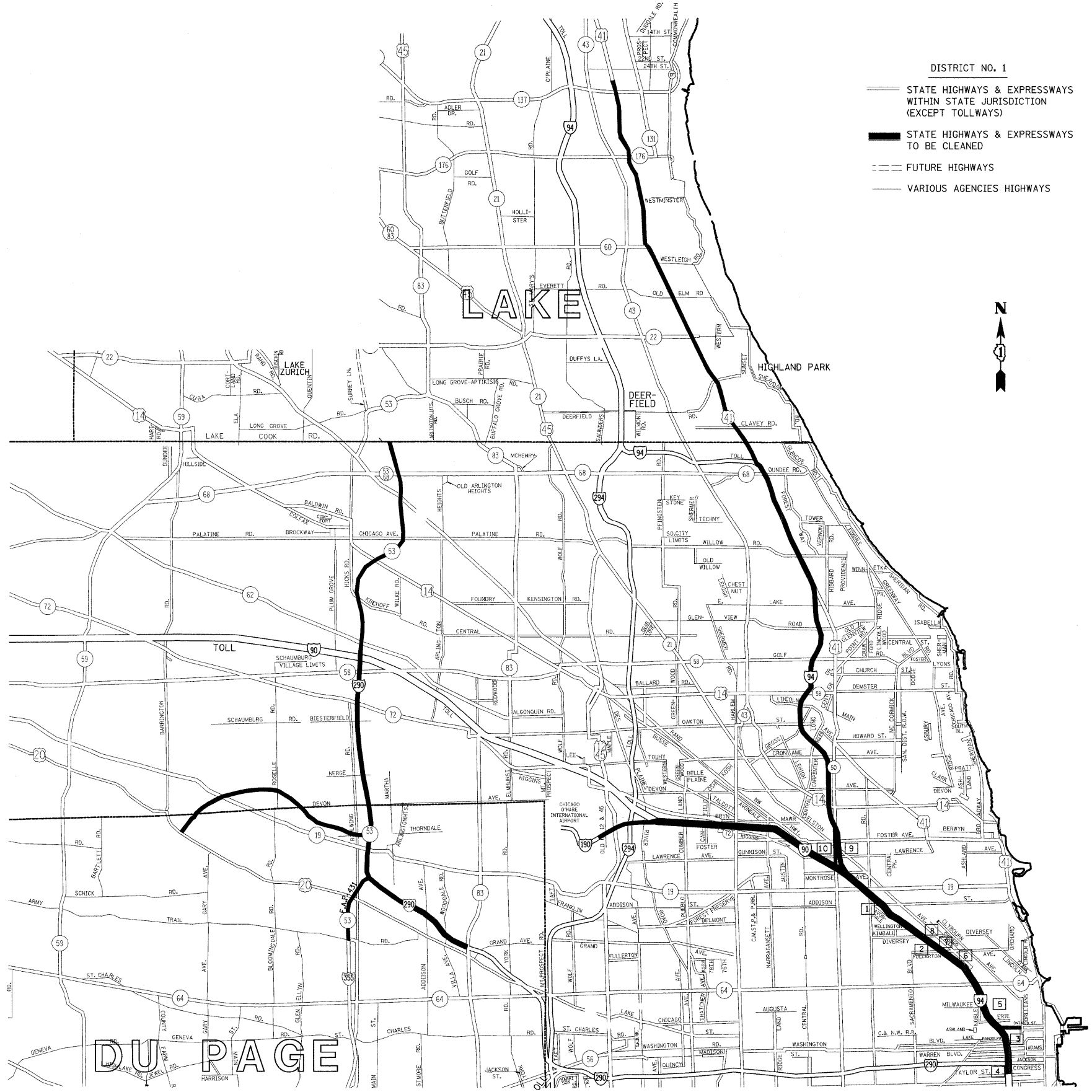
DRAWN BY  
CHECKED BY





F.A. RTE.	SECTION	COUNTY	TOTAL SHEETS	SHEET NO.
VAR.	2009-041 I	*	26	7
STA.	TO STA.			
FED. ROAD DIST. NO.	ILLINOIS	FED. AID PROJECT		

\*COOK, DU PAGE, KANE, LAKE, MC HENRY AND WILL



**DISTRICT NO. 1**

— STATE HIGHWAYS & EXPRESSWAYS WITHIN STATE JURISDICTION (EXCEPT TOLLWAYS)

— STATE HIGHWAYS & EXPRESSWAYS TO BE CLEANED

- - - FUTURE HIGHWAYS

— VARIOUS AGENCIES HIGHWAYS

**DAY CLEANING ONLY**

I-290 Extension/ILL. 53/Elgin-O'Hare Expressway

I-290 from Illinois 83 to Northwest Tollway, Illinois 53 from Northwest Tollway to Lake Cook Road including I-355 from I-290 to Army Trail Road and the Elgin-O'Hare Expressway from the east side of the bridge over I-290 to U.S. Route 20.

Edens Expressway

Interstate 94 from Montrose to Dundee Road and U.S. 41 from Dundee Road to 700 lineal feet north of Illinois 137 including two ramps at Clayey Road, two ramps at West Park Avenue, four ramps at Deerpath Road and the entire US 41/Deerfield Road Interchange. Also included is Tower Road from Edens Expressway to Forestway Drive.

**NIGHT CLEANING ONLY**

Kennedy Expressway

Interstate 90/94 from Taylor Street to Interstate 90/94 junction at Edens Expressway, Interstate 90 from Interstate 90/94 junction at Edens Expressway to Interstate 90/190, Interstate 190 from Interstate 90/190 junction to the east limits of O'Hare International Airport, Interstate 90 from the Interstate 90/190 junction to the tollway turnaround, the Ohio Street Feeder, from Orleans Street to Interstate 90/94 and all accident investigation sites located along Interstate 90/94.

ACCIDENT INVESTIGATION SITES:

1. INBOUND INTERSTATE 90/94 AT ADDISON STREET OFF RAMP.
2. INBOUND INTERSTATE 90/94 ALONG FULLERTON AVENUE UNDER INTERSTATE 90/94.
3. INBOUND INTERSTATE 90/94 IN THE OHIO STREET INFIELD.
4. INTERSTATE 90/94 AT POLK AVENUE.
5. OUTBOUND INTERSTATE 90/94 ALONG DIVISION STREET OFF RAMP.
6. OUTBOUND INTERSTATE 90/94 ALONG INTERSTATE 90/94 AT DAMEN AVENUE.
7. OUTBOUND INTERSTATE 90/94 ALONG FULLERTON AVENUE UNDER INTERSTATE 90/94.
8. OUTBOUND INTERSTATE 90/94 ALONG KIMBALL STREET OFF RAMP.
9. OUTBOUND INTERSTATE 94 ALONG FOSTER AVENUE OFF RAMP.
10. OUTBOUND INTERSTATE 90/94 JUST BEFORE LAWRENCE AVENUE OFF RAMP.

PLOT DATE = 5/21/2009  
 FILE NAME = c:\p\work\p\1007\MDY\JVA\08136184\SweepingContr.ecs2889.dgn  
 PLOT SCALE = 62.9412 / IN.  
 USER NAME = mdjjs

REVISIONS	
NAME	DATE

ILLINOIS DEPARTMENT OF TRANSPORTATION

EXPRESSWAY CLEANING LOCATION MAP  
 I-290 EXTENSION/ILL. 53, EDENS, KENNEDY  
 &  
 ELGIN-O'HARE

SCALE: VERT. \_\_\_\_\_  
 HORIZ. \_\_\_\_\_  
 DATE \_\_\_\_\_

DRAWN BY \_\_\_\_\_  
 CHECKED BY \_\_\_\_\_

F.A. RTE.	SECTION	COUNTY	TOTAL SHEETS	SHEET NO.
VAR.	2009-041 I	*	26	8
STA.	TO STA.			
FED. ROAD DIST. NO.	ILLINOIS	FED. AID PROJECT		

\*COOK, DU PAGE, KANE, LAKE, MC HENRY AND WILL

**DAY CLEANING ONLY**

Eisenhower Expressway

Interstate 290 from Wells St. to Austin Blvd. In its entirety, from Austin Blvd. to 25th Ave. right hand side and all ramps, the eastbound collector-distributor lanes and all ramps at the U.S. 12/20/45 (Mannheim Rd.) Interchange and to Roosevelt Rd. on its extension and Lower Wacker Dr. from Lake St. to the Eisenhower Expressway.

Stevenson Expressway

Interstate 55 (Stevenson Expressway) from Lake Shore Drive to the Cook-DuPage county line, including First Avenue, from 43rd Street to Archer Avenue, and all accident investigation sites.

I 55 Expressway

Interstate 55 from Cook-DuPage county line to I-80, including all ramps to and from Illinois Route 53. Also included are the ramps and collector-distributor lanes at the Route 83 Interchange, and the ramps to and from Joliet Road from I-55 to east of the N.B. Tollway bridge and the Ramps from NB I-55 to NB Tollway and from SB Tollway to NB I-55 (Limits of cleaning on these Ramps are from I-55 to the first median crossover North of Joliet Rd.) and all accident investigation sites.

ACCIDENT INVESTIGATION SITES:

FOR LOCATIONS 1-10, SEE INNER CITY EXPRESSWAY (NORTH SECTION)

- 11. INBOUND INTERSTATE 55 AT HALSTED STREET
- 12. OUTBOUND INTERSTATE 55 AT THROOP STREET
- 13. INBOUND INTERSTATE 55 AT WOOD STREET. (LOCATED UNDER I-55)
- 14. OUTBOUND INTERSTATE 55 AT KEDZIE AVENUE
- 15, 16. INTERSTATE 90/94 AT 87th STREET (NORTHBOUND AND SOUTHBOUND)
- 17, 18. INTERSTATE 90/94 AT 71st STREET (NORTHBOUND AND SOUTHBOUND)
- 19. INTERSTATE 90/94 AT POLK STREET
- 20. INTERSTATE 90/94 AT KING DRIVE

**NIGHT CLEANING ONLY**

Eisenhower Expressway

Interstate 290 from Austin Blvd. to 25th Ave. left hand side only and from 25th Ave. to Ill. 83 including the ramps in its entirety except the eastbound collector-distributor lanes at the U.S. 12/20/45 Interchange and to Roosevelt Rd. on its extension.

Dan Ryan Expressway

Interstate 94 from Taylor Street to Cottage Grove Avenue, Interstate 57 from Interstate 94 to Halsted Street and Franklin Street connector from 22nd Street to Interstate 94

DISTRICT NO. 1

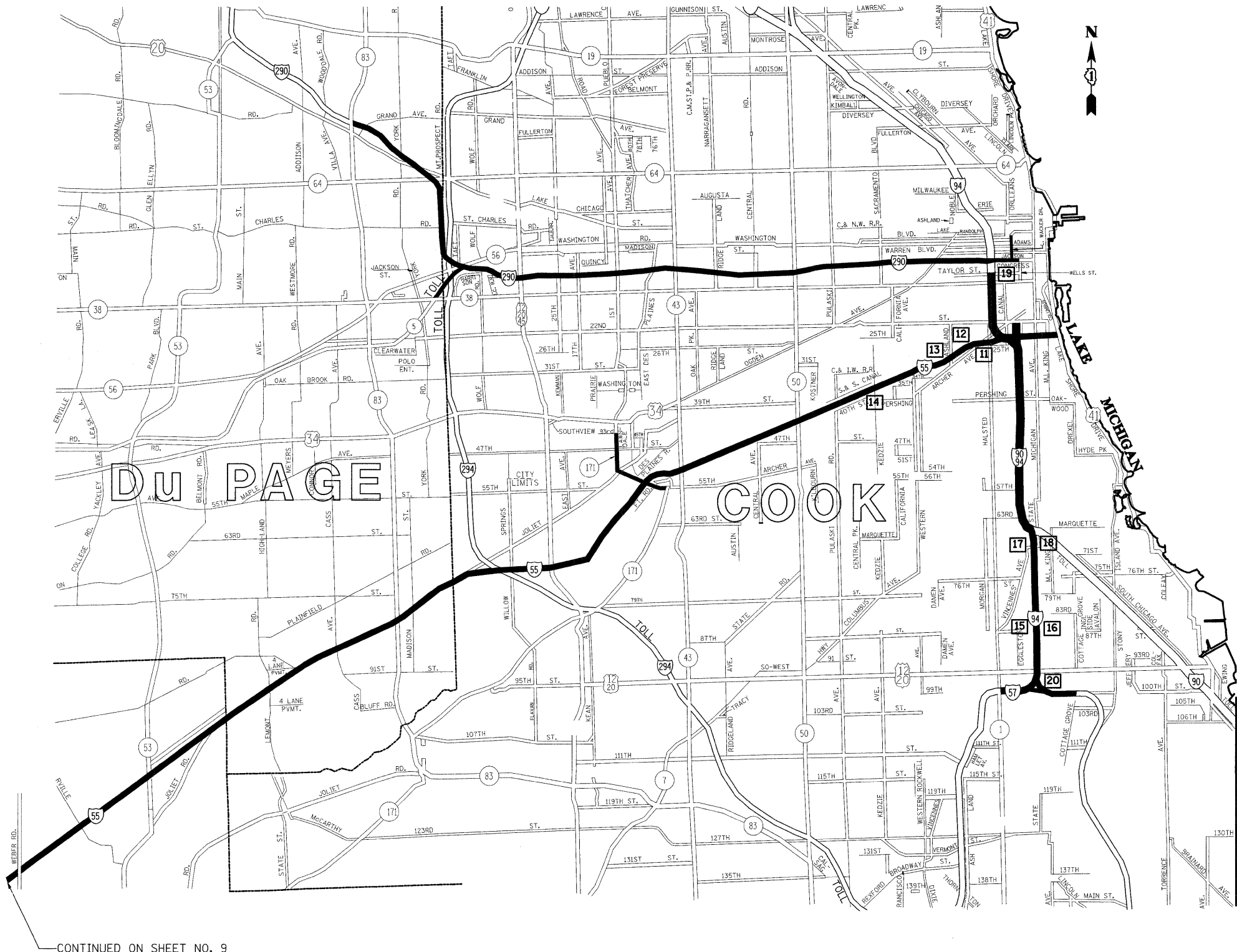
- STATE HIGHWAYS & EXPRESSWAYS WITHIN STATE JURISDICTION (EXCEPT TOLLWAYS)
- STATE HIGHWAYS & EXPRESSWAYS TO BE CLEANED
- FUTURE HIGHWAYS
- VARIOUS AGENCIES HIGHWAYS

REVISIONS	
NAME	DATE

ILLINOIS DEPARTMENT OF TRANSPORTATION  
EXPRESSWAY CLEANING LOCATION MAP  
EISENHOWER, STEVENSON, DAN RYAN & I-55

SCALE: VERT.  
DATE

DRAWN BY  
CHECKED BY



CONTINUED ON SHEET NO. 9

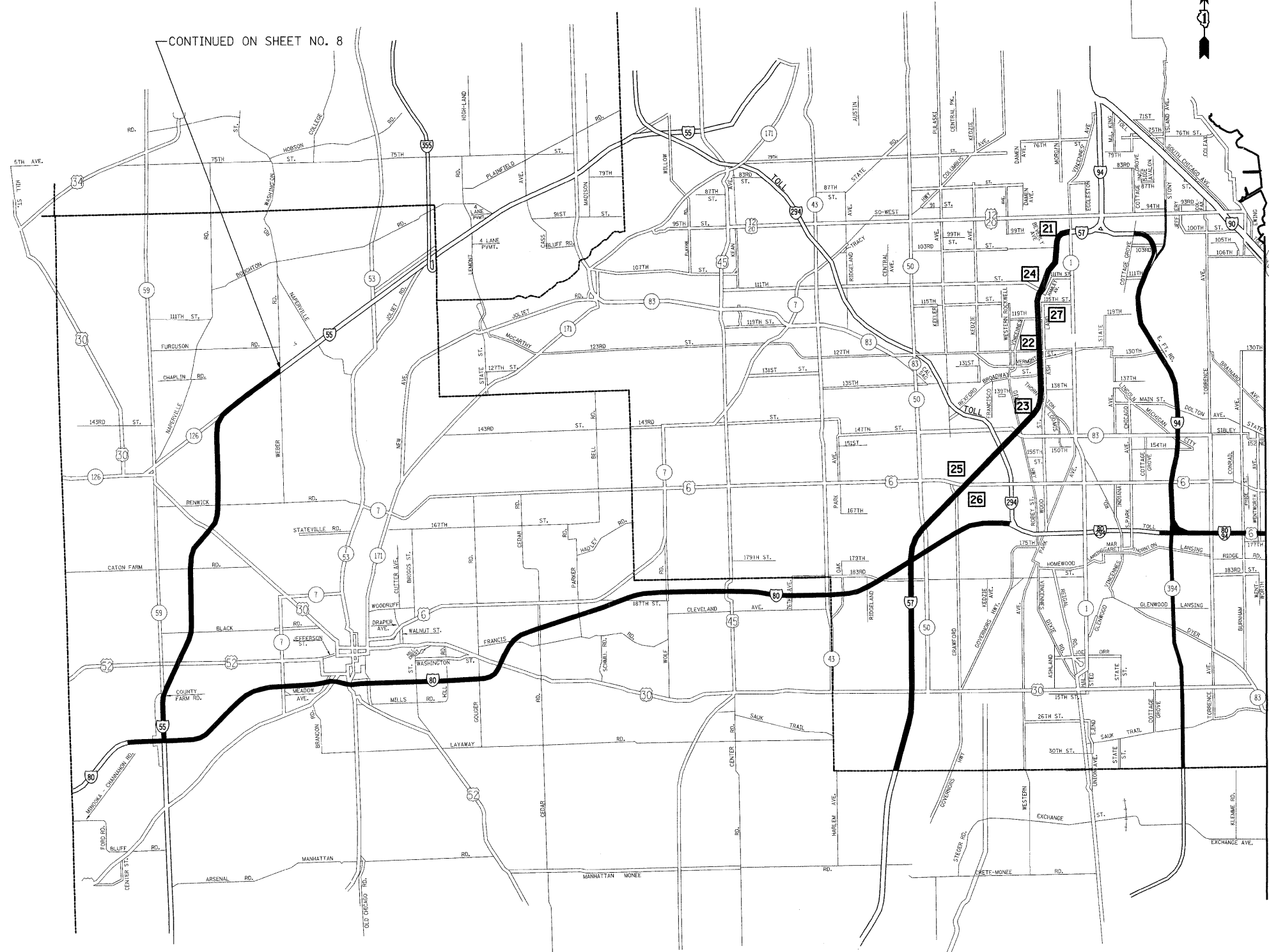
PLOT DATE = 5/21/2009  
FILE NAME = c:\p\work\p\p\DOT\HDY\JA\08136184\Swapping\Contr.ecs2009.dgn  
USER NAME = mmsjgn



F.A. RT.	SECTION	COUNTY	TOTAL SHEETS	SHEET NO.
VAR.	2009-041 I	*	26	9
STA.		TO STA.		
FED. ROAD DIST. NO.	ILLINOIS	FED. AID PROJECT		

\*COOK, DU PAGE, KANE, LAKE, MC HENRY AND WILL

CONTINUED ON SHEET NO. 8



**DAY CLEANING ONLY**

**Bishop Ford/Kingery Expressway**  
Interstate 94 from Cottage Grove Avenue to the Indiana State line excluding northbound left hand side from Cottage Grove Ave. to 103rd St., Illinois 394 from Interstate 94 to the Cook-Will County line and the entire Stony Island Avenue - 103rd Street Interchange. Interstate 80 from Interstate 94 to Interstate 294.

**I-57 Expressway**  
Interstate 57 from Halsted Street to Steger Road including the entire I-57 - I-80 interchange and all accident investigation sites.

- 21 - 23 INTERSTATE 57-3 LOCATIONS IN THE MEDIAN BETWEEN HALSTED AND 147th ST.
- 24. OUTBOUND INTERSTATE 57 AT 111th STREET EXIT RAMP
- 25 - 26 INTERSTATE 57 - 2 LOCATIONS ON THE 167th STREET RAMPS
- 27 INTERSTATE 57 - IN THE MEDIAN AT 119th STREET

**I-80 Expressway**  
Interstate 80 from Interstate 294 to the Dupage River (west of Interstate 55)

**NIGHT CLEANING ONLY**

**Bishop Ford Expressway**  
Interstate 94 from 103rd St. to Cottage Grove Ave. northbound left hand side only.

**DISTRICT NO. 1**

- STATE HIGHWAYS & EXPRESSWAYS WITHIN STATE JURISDICTION (EXCEPT TOLLWAYS)
- STATE HIGHWAYS & EXPRESSWAYS TO BE CLEANED
- FUTURE HIGHWAYS
- VARIOUS AGENCIES HIGHWAYS

INDIANA

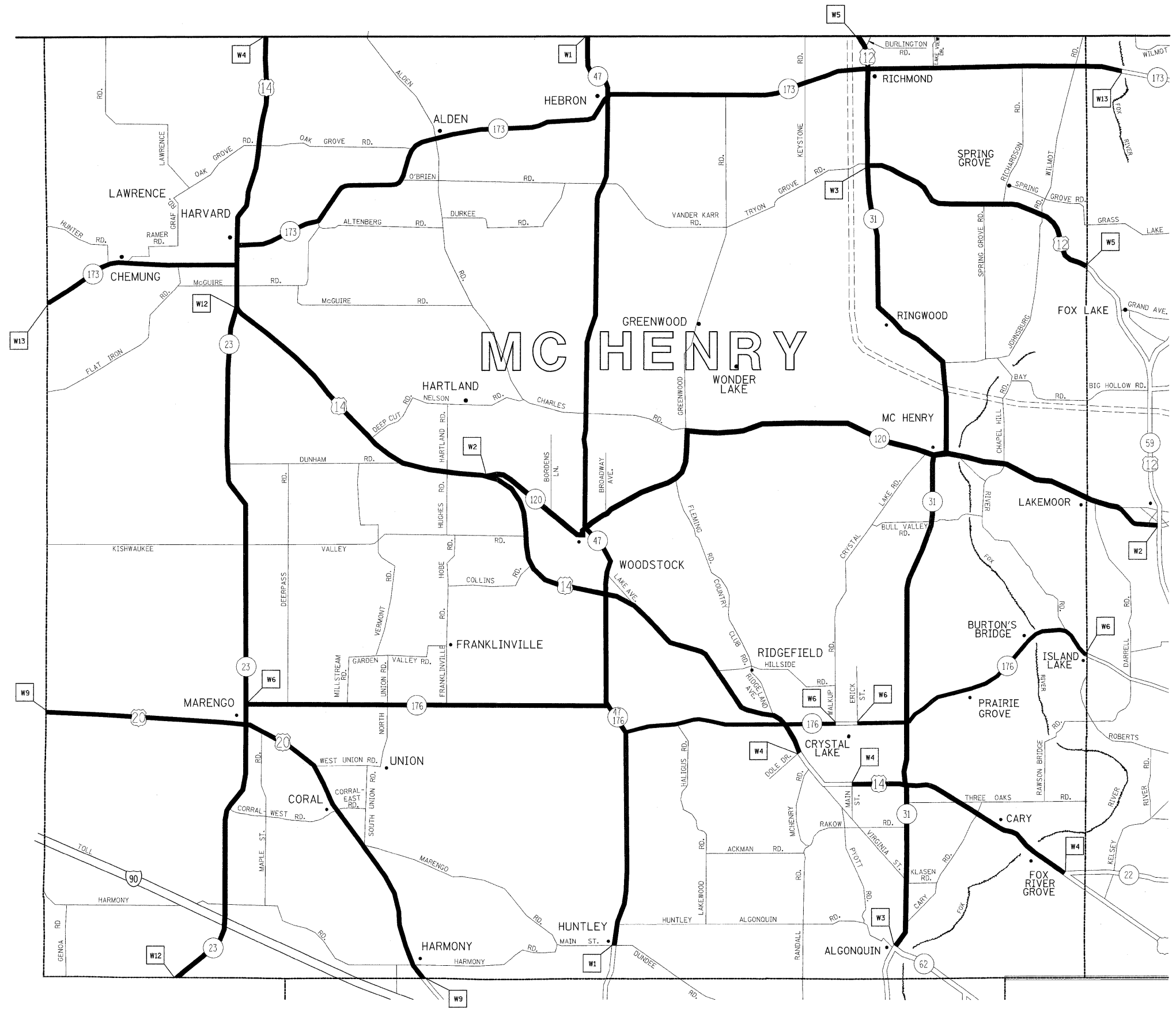
REVISIONS	
NAME	DATE

ILLINOIS DEPARTMENT OF TRANSPORTATION  
EXPRESSWAY CLEANING LOCATION MAP  
BISHOP FORD, KINGERY, I-55, I-57 AND I-80  
SCALE: VERT. DATE  
DRAWN BY CHECKED BY

PLOT DATE = 5/21/2009  
FILE NAME = c:\sh-work\p\w\dot\m\dy\j\4\48136181\Sweeping\center\ec42887.dgn  
PLOT SCALE = 52.9412 / IN.  
USER NAME = mdsjg

F.A. RTE.	SECTION	COUNTY	TOTAL SHEETS	SHEET NO.
VAR.	2009-041 I	*	26	10
STA.		TO STA.		
FED. ROAD DIST. NO.		ILLINOIS FED. AID PROJECT		

\*COOK, DU PAGE, KANE, LAKE, MC HENRY AND WILL



TEAM SECTION  
WOODSTOCK

KEY LOCATIONS  
W1 - W13

- DISTRICT NO. 1
- STATE HIGHWAYS & EXPRESSWAYS WITHIN STATE JURISDICTION (EXCEPT TOLLWAYS)
  - STATE HIGHWAYS & EXPRESSWAYS TO BE CLEANED
  - FUTURE HIGHWAYS
  - VARIOUS AGENCIES HIGHWAYS

REVISIONS	
NAME	DATE

ILLINOIS DEPARTMENT OF TRANSPORTATION

ARTERIAL CLEANING  
LOCATION MAP  
MC HENRY COUNTY  
WOODSTOCK TEAM SECTION

SCALE: VERT. / HORIZ.  
DATE

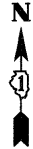
DRAWN BY  
CHECKED BY

PLOT DATE = 5/21/2009  
FILE NAME = c:\p\work\p\m\DOT\MD\JA\08136184\SwappingContr.ecad2009.dgn  
PLOT SCALE = 62.9412' / IN.  
USER NAME = mdjg

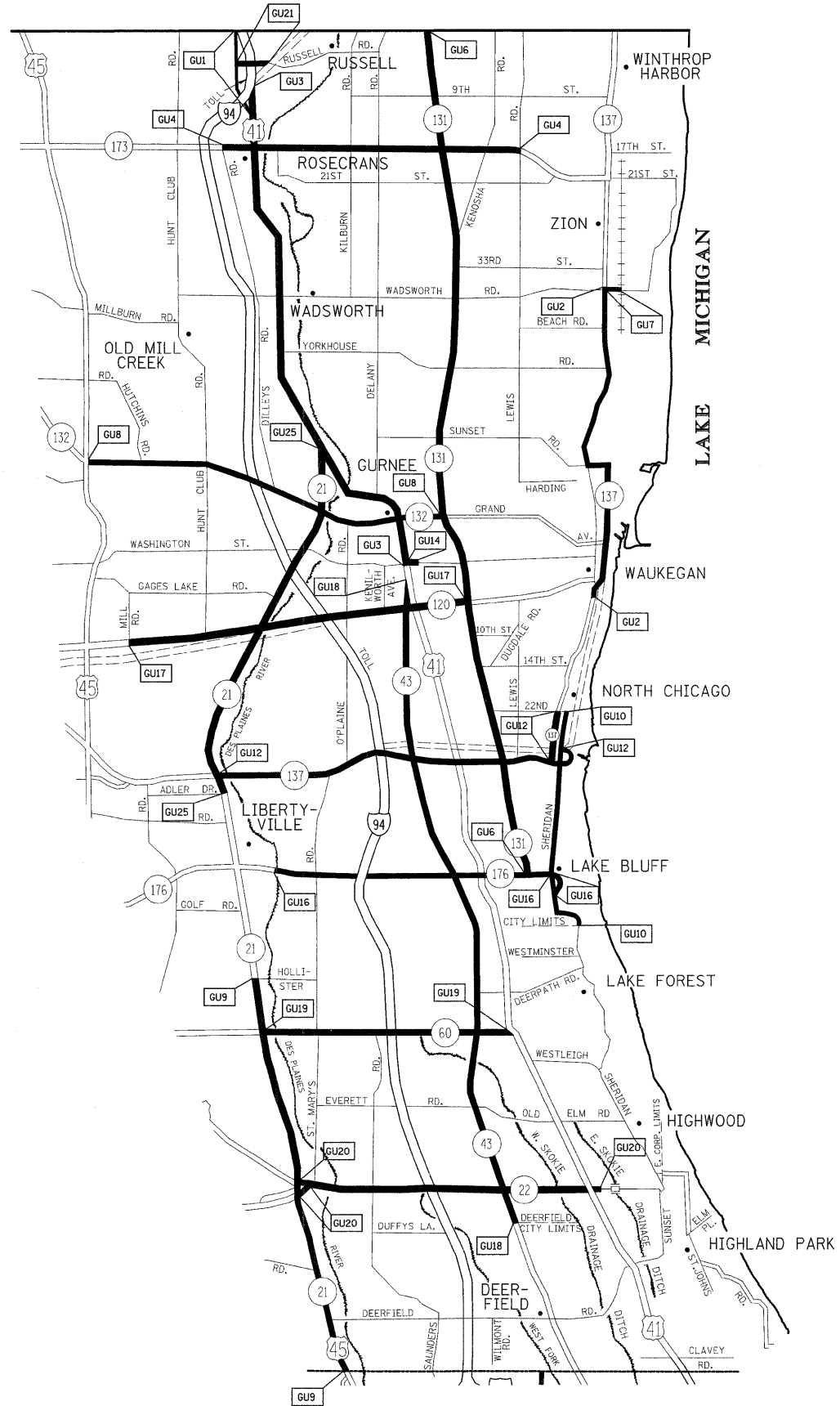


F.A. RTE.	SECTION	COUNTY	TOTAL SHEETS	SHEET NO.
VAR.	2009-041 I	*	26	12
STA.		TO STA.		
FED. ROAD DIST. NO.	ILLINOIS	FED. AID PROJECT		

\*COOK, DU PAGE, KANE, LAKE, MC HENRY AND WILL



TEAM SECTION	KEY LOCATIONS
GURNEE	GU1 - GU25



- DISTRICT NO. 1
- STATE HIGHWAYS & EXPRESSWAYS WITHIN STATE JURISDICTION (EXCEPT TOLLWAYS)
  - STATE HIGHWAYS & EXPRESSWAYS TO BE CLEANED
  - FUTURE HIGHWAYS
  - VARIOUS AGENCIES HIGHWAYS

REVISIONS	
NAME	DATE

ILLINOIS DEPARTMENT OF TRANSPORTATION  
**ARTERIAL CLEANING  
 LOCATION MAP  
 LAKE COUNTY  
 GURNEE TEAM SECTION**

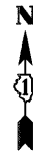
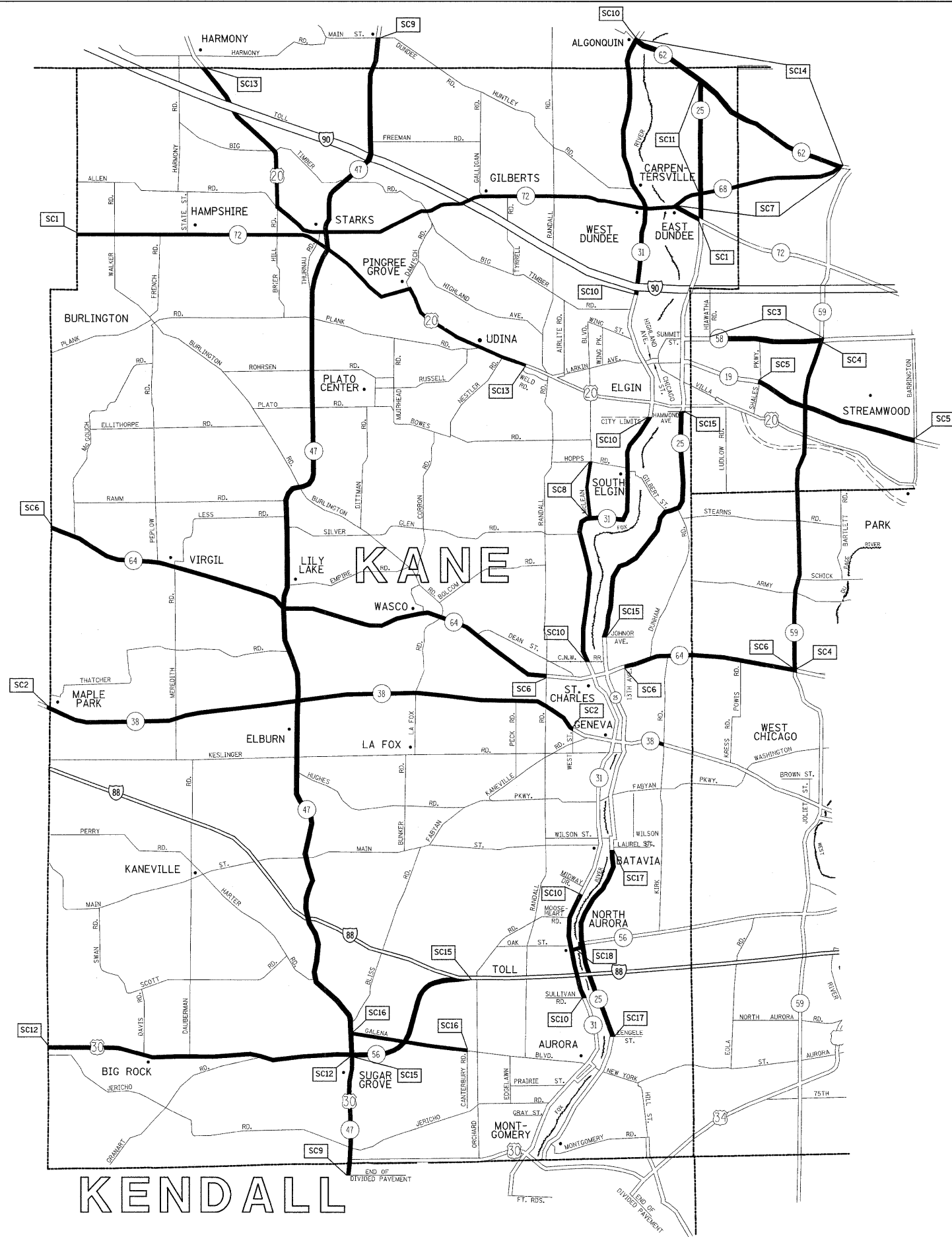
SCALE: VERT. \_\_\_\_\_  
 HORIZ. \_\_\_\_\_  
 DATE \_\_\_\_\_

DRAWN BY \_\_\_\_\_  
 CHECKED BY \_\_\_\_\_

PLOT DATE = 6/21/2009  
 FILE NAME = c:\pwork\pwork\pwork\1318181\SweepingContr.ec22889.dgn  
 PLOT SCALE = 62.9412 / IN.  
 USER NAME = mdsjg

F.A. RTE.	SECTION	COUNTY	TOTAL SHEETS	SHEET NO.
VAR.	2009-041 I	*	26	13
STA.		TO STA.		
FED. ROAD DIST. NO.	ILLINOIS	FED. AID PROJECT		

\*COOK, DU PAGE, KANE, LAKE, MC HENRY AND WILL



TEAM SECTION	KEY LOCATIONS
ST. CHARLES	SC1 - SC18

- DISTRICT NO. 1
- STATE HIGHWAYS & EXPRESSWAYS WITHIN STATE JURISDICTION (EXCEPT TOLLWAYS)
  - STATE HIGHWAYS & EXPRESSWAYS TO BE CLEANED
  - FUTURE HIGHWAYS
  - VARIOUS AGENCIES HIGHWAYS

REVISIONS	
NAME	DATE

ILLINOIS DEPARTMENT OF TRANSPORTATION  
**ARTERIAL CLEANING  
 LOCATION MAP  
 KANE COUNTY  
 ST. CHARLES TEAM SECTION**

SCALE: VERT. \_\_\_\_\_  
 DATE: \_\_\_\_\_

DRAWN BY \_\_\_\_\_  
 CHECKED BY \_\_\_\_\_

PLOT DATE = 5/21/2009  
 FILE NAME = c:\p\work\k-pw\DOT\VID\JA\38136184 SweepingContract42889.dgn  
 PLOT SCALE = 52.9412 / IN.  
 USER NAME = mdsjg



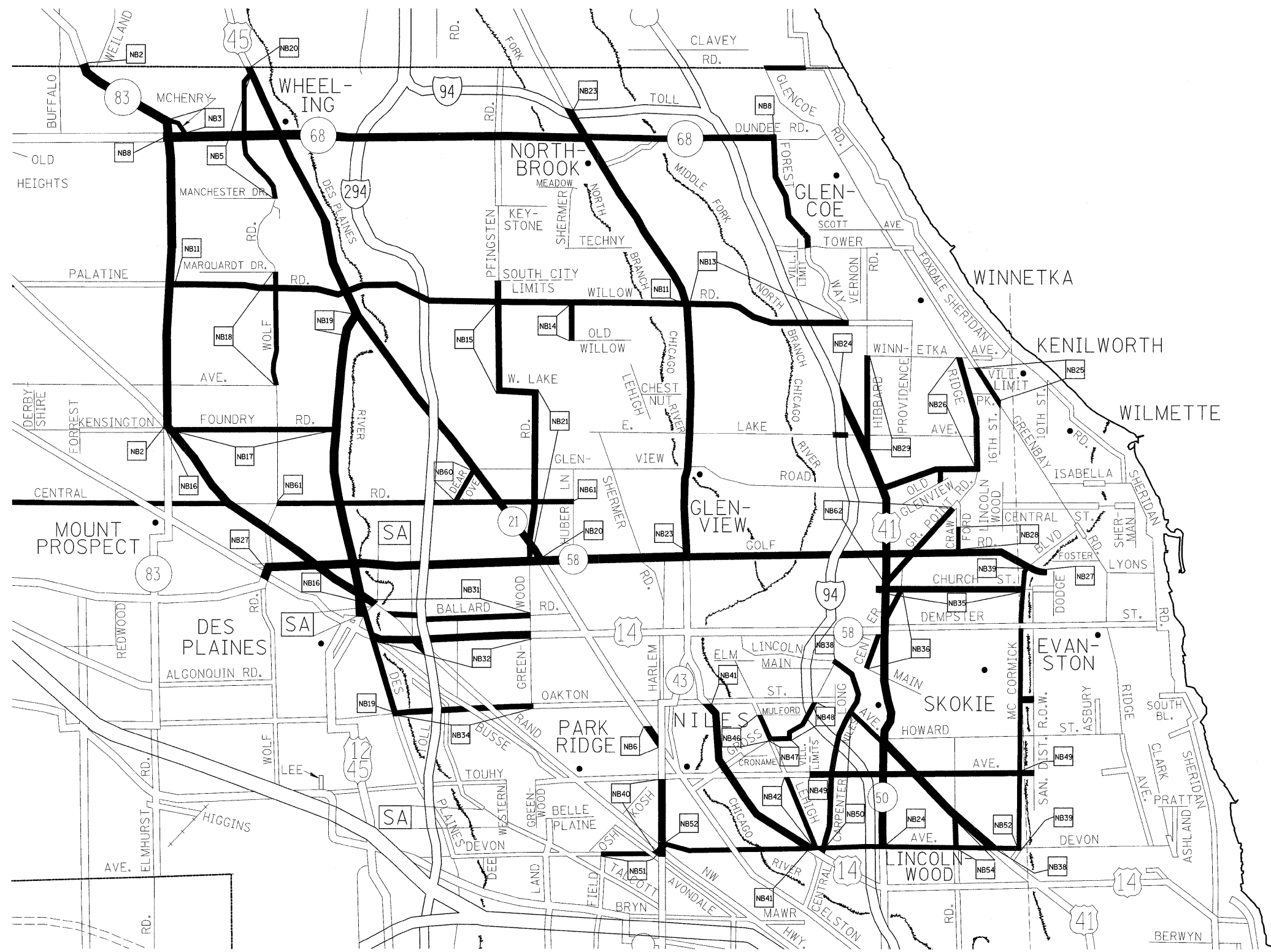
F.A. RTE.	SECTION	COUNTY	TOTAL SHEETS	SHEET NO.
VAR.	2009-041 I	*	26	15
STA.	TO STA.			
FED. ROAD DIST. NO.	ILLINOIS	FED. AID PROJECT		

\*COOK, DU PAGE, KANE, LAKE, MC HENRY AND WILL



TEAM SECTION	KEY LOCATIONS
NORTHBROOK	NB1-NB62

- DISTRICT NO. 1
- STATE HIGHWAYS & EXPRESSWAYS WITHIN STATE JURISDICTION (EXCEPT TOLLWAYS)
  - STATE HIGHWAYS & EXPRESSWAYS TO BE CLEANED
  - FUTURE HIGHWAYS
  - VARIOUS AGENCIES HIGHWAYS



REVISIONS	
NAME	DATE

ILLINOIS DEPARTMENT OF TRANSPORTATION

ARTERIAL CLEANING  
LOCATION MAP  
COOK COUNTY  
NORTHBROOK TEAM SECTION

SCALE: VERT. \_\_\_\_\_  
HORIZ. \_\_\_\_\_  
DATE \_\_\_\_\_

DRAWN BY \_\_\_\_\_  
CHECKED BY \_\_\_\_\_

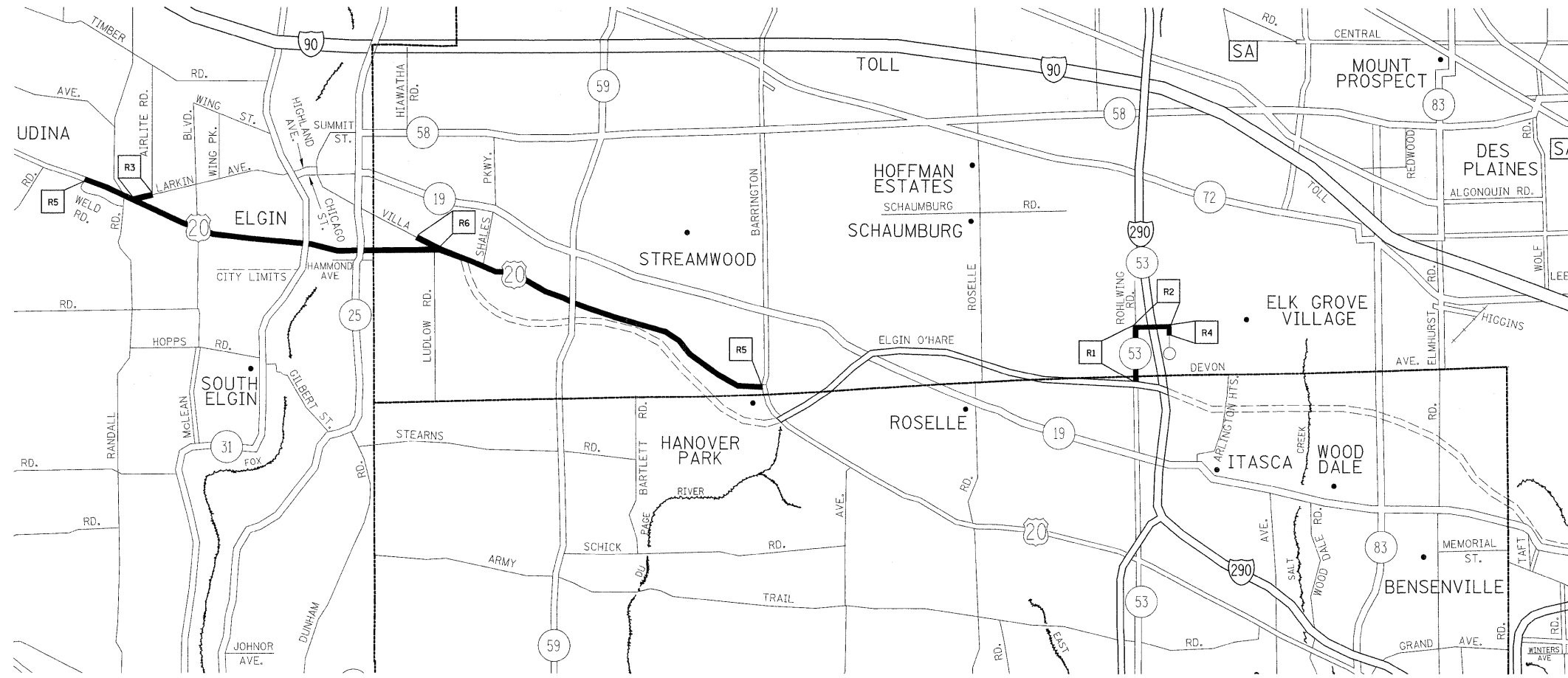
PLOT DATE = 5/21/2009  
FILE NAME = c:\p\work\p\1001\MD\JA\88136184\SweepingContract2009.dgn  
PLOT SCALE = 62.9412 / IN.  
USER NAME = mcdjg





F.A. RTE.	SECTION	COUNTY	TOTAL SHEETS	SHEET NO.
VAR.	2009-041 I	*	26	17
STA.	TO STA.			
FED. ROAD DIST. NO.	ILLINOIS	FED. AID PROJECT		

\*COOK, DU PAGE, KANE, LAKE, MC HENRY AND WILL



TEAM SECTION	KEY LOCATIONS
RODENBURG	R1-R6

- DISTRICT NO. 1
- STATE HIGHWAYS & EXPRESSWAYS WITHIN STATE JURISDICTION (EXCEPT TOLLWAYS)
  - STATE HIGHWAYS & EXPRESSWAYS TO BE CLEANED
  - FUTURE HIGHWAYS
  - VARIOUS AGENCIES HIGHWAYS

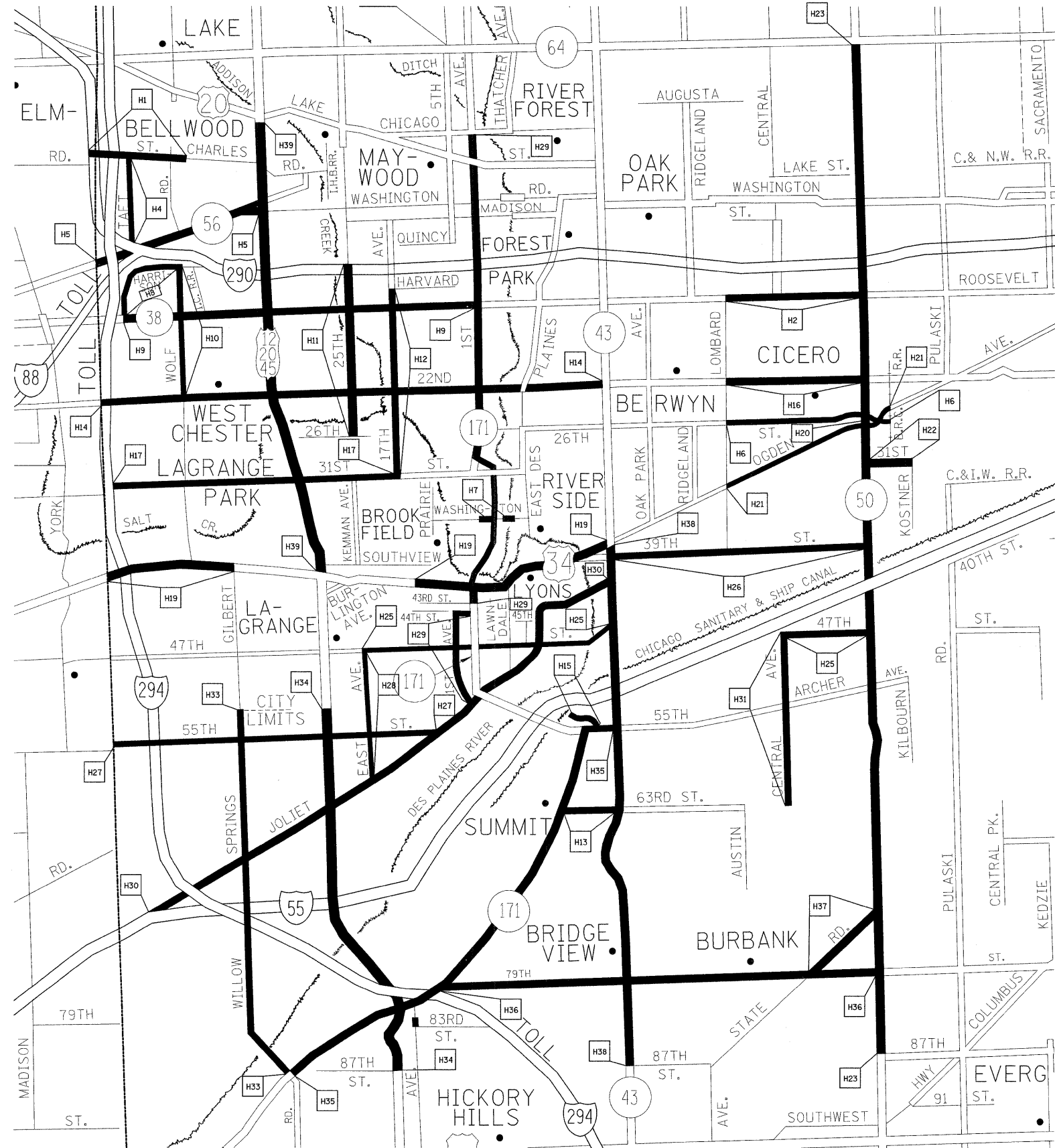
REVISIONS	
NAME	DATE

ILLINOIS DEPARTMENT OF TRANSPORTATION  
**ARTERIAL CLEANING  
 LOCATION MAP  
 COOK COUNTY  
 RODENBURG TEAM SECTION**

SCALE: VERT. \_\_\_\_\_  
 HORIZ. \_\_\_\_\_  
 DATE \_\_\_\_\_ DRAWN BY \_\_\_\_\_  
 CHECKED BY \_\_\_\_\_

F.A. RTE.	SECTION	COUNTY	TOTAL SHEETS	SHEET NO.
VAR.	2009-041 I	*	26	17
STA.	TO STA.			
FED. ROAD DIST. NO.	ILLINOIS	FED. AID PROJECT		

\*COOK, DU PAGE, KANE, LAKE, MC HENRY AND WILL



TEAM SECTION	KEY LOCATIONS
HILLSIDE	H1-H39

- DISTRICT NO. 1
- STATE HIGHWAYS & EXPRESSWAYS WITHIN STATE JURISDICTION (EXCEPT TOLLWAYS)
  - STATE HIGHWAYS & EXPRESSWAYS TO BE CLEANED
  - FUTURE HIGHWAYS
  - VARIOUS AGENCIES HIGHWAYS

REVISIONS	
NAME	DATE

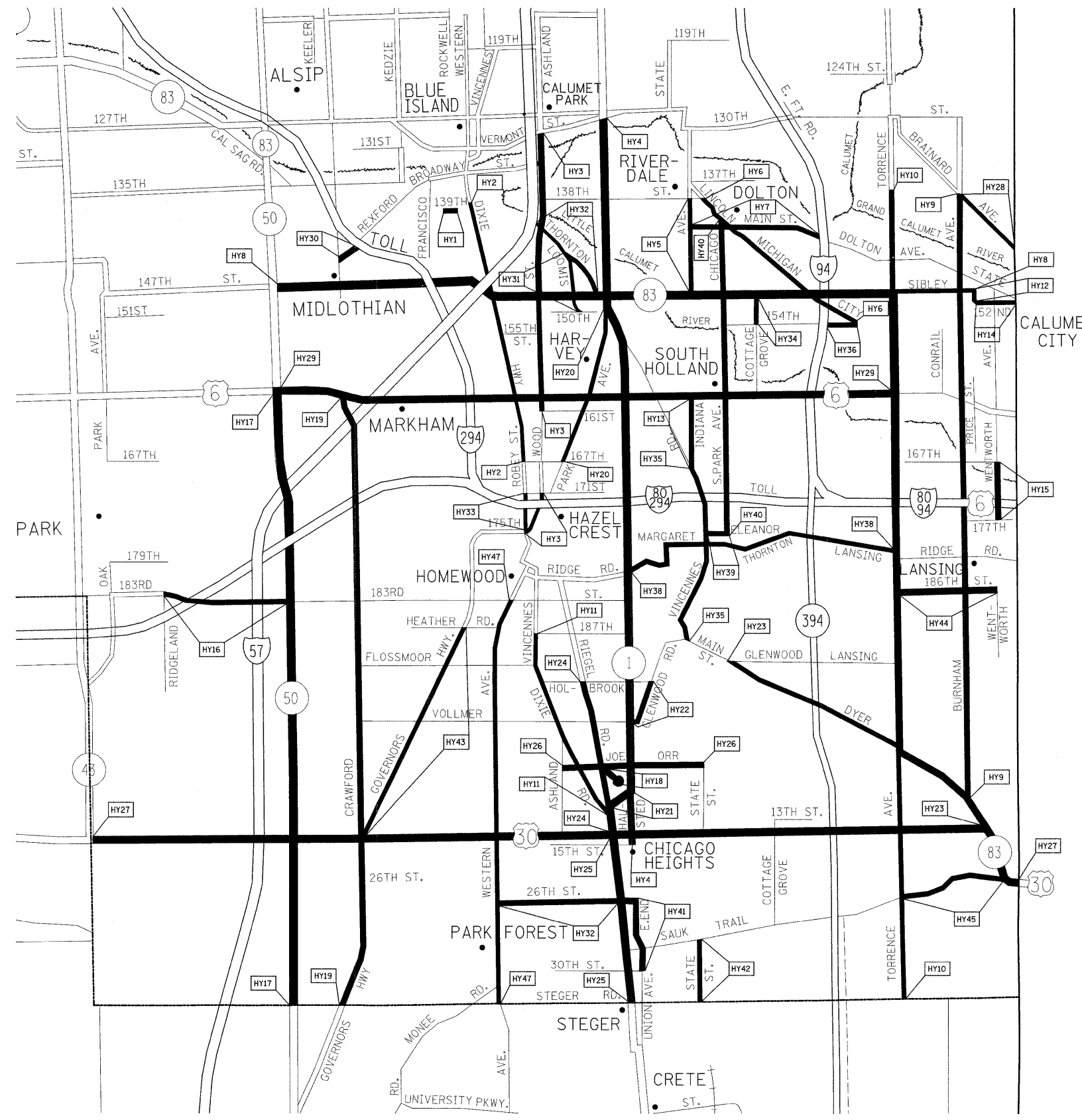
ILLINOIS DEPARTMENT OF TRANSPORTATION  
**ARTERIAL CLEANING  
 LOCATION MAP  
 COOK COUNTY  
 HILLSIDE TEAM SECTION**

SCALE: VERT. DATE  
 HORIZ. DRAWN BY  
 CHECKED BY

PLOT DATE = 5/21/2009  
 FILE NAME = c:\p\work\p\1007\MD\1\JA\081361841\SweepingContr.ec 228P.dgn  
 PLOT SCALE = 02.9412 / IN.  
 USER NAME = mdsjs

F.A. RTE.	SECTION	COUNTY	TOTAL SHEETS	SHEET NO.
VAR.	2009-041 I	*	26	18
STA.	TO STA.			
FED. ROAD DIST. NO.	ILLINOIS FED. AID PROJECT			

\*COOK, DU PAGE, KANE, LAKE, MC HENRY AND WILL



TEAM SECTION	KEY LOCATIONS
HARVEY	HY1-HY47

- DISTRICT NO. 1
- STATE HIGHWAYS & EXPRESSWAYS WITHIN STATE JURISDICTION (EXCEPT TOLLWAYS)
  - STATE HIGHWAYS & EXPRESSWAYS TO BE CLEANED
  - - - FUTURE HIGHWAYS
  - VARIOUS AGENCIES HIGHWAYS

REVISIONS	
NAME	DATE

ILLINOIS DEPARTMENT OF TRANSPORTATION

ARTERIAL CLEANING  
LOCATION MAP  
COOK COUNTY  
HARVEY TEAM SECTION

SCALE: VERT.      DRAWN BY  
          HORIZ.      CHECKED BY  
DATE

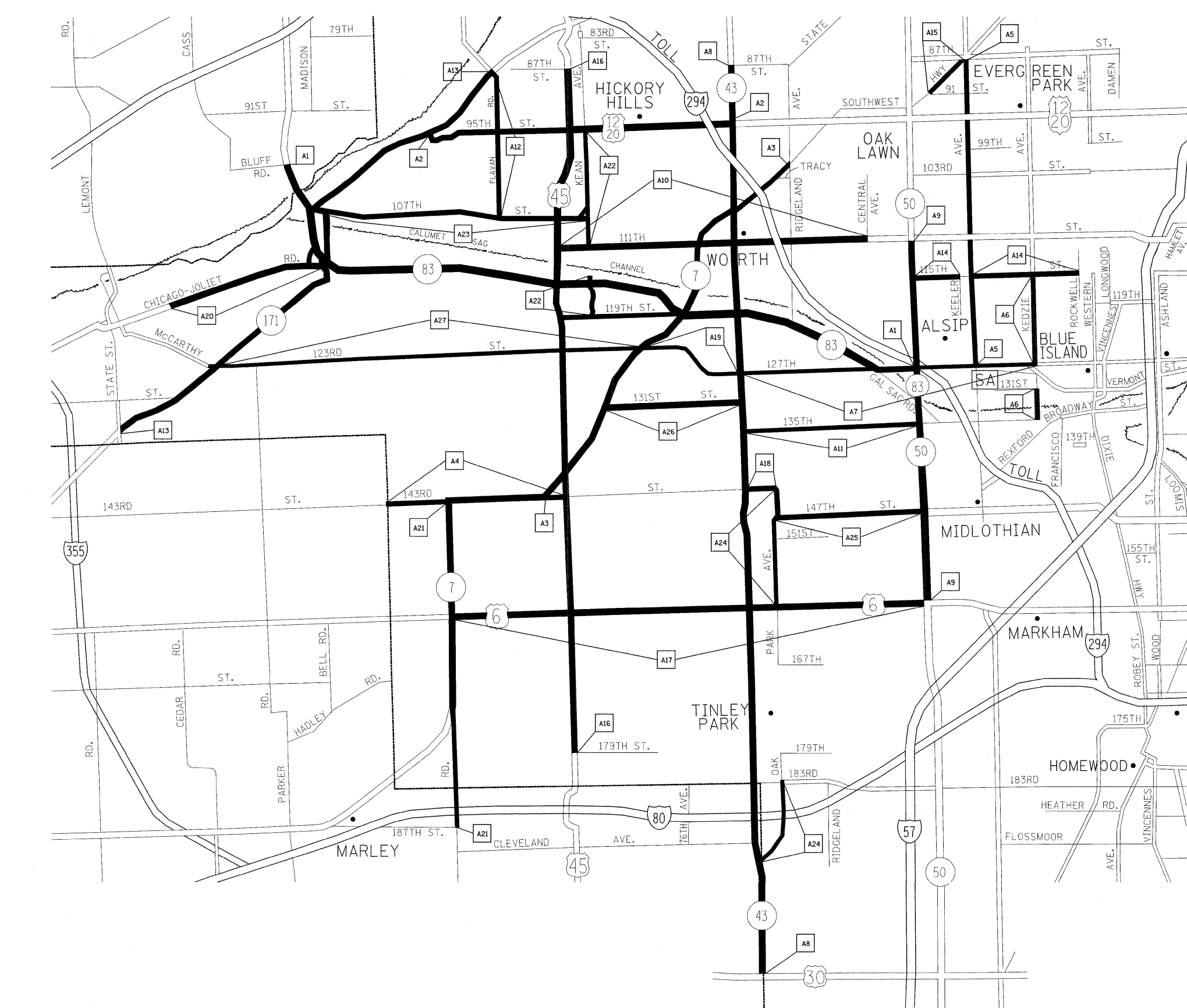
PLOT DATE = 5/21/2009  
FILE NAME = c:\p\work\p\DDOT\MDV\JA\80136184\3sweeping\Contract2009.dgn  
PLOT SCALE = 32:1412 / IN.  
USER NAME = mda\js

F.A. RTE.	SECTION	COUNTY	TOTAL SHEETS	SHEET NO.
VAR.	2009-041 I	*	26	19
STA.		TO STA.		
FED. ROAD DIST. NO.		ILLINOIS FED. AID PROJECT		

\*COOK, DU PAGE, KANE, LAKE, MC HENRY AND WILL



TEAM SECTION	KEY LOCATIONS
ALSIP	A1-A27



- DISTRICT NO. 1
- STATE HIGHWAYS & EXPRESSWAYS WITHIN STATE JURISDICTION (EXCEPT TOLLWAYS)
  - STATE HIGHWAYS & EXPRESSWAYS TO BE CLEANED
  - - - FUTURE HIGHWAYS
  - VARIOUS AGENCIES HIGHWAYS

REVISIONS	
NAME	DATE

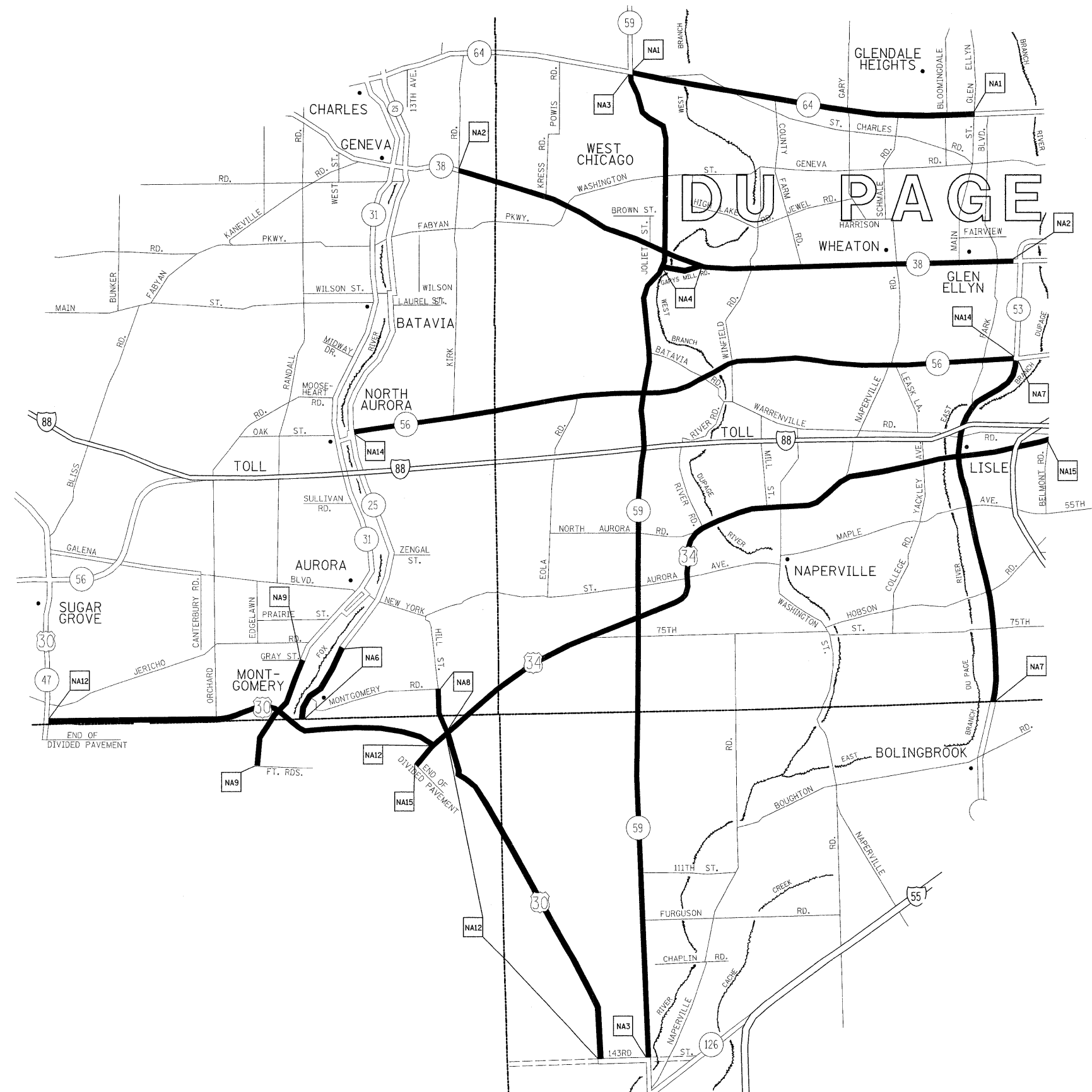
ILLINOIS DEPARTMENT OF TRANSPORTATION  
**ARTERIAL CLEANING  
 LOCATION MAP  
 COOK COUNTY  
 ALSIP TEAM SECTION**

SCALE: VERT. \_\_\_\_\_  
 HORIZ. \_\_\_\_\_  
 DATE \_\_\_\_\_ DRAWN BY \_\_\_\_\_  
 CHECKED BY \_\_\_\_\_

PLOT DATE = 5/21/2009  
 FILE NAME = c:\pwworkspace\pwworkspace\13618184\SweepingContract2009.dgn  
 PLOT SCALE = 62.9412 / / IN.  
 USER NAME = mdsjg

F.A. RTE.	SECTION	COUNTY	TOTAL SHEETS	SHEET NO.
VAR.	2009-041 I	*	26	20
STA.	TO STA.			
FED. ROAD DIST. NO.	ILLINOIS	FED. AID PROJECT		

\*COOK, DU PAGE, KANE, LAKE, MC HENRY AND WILL



TEAM SECTION  
NAPERVILLE

KEY LOCATIONS  
NA1-NA15

- DISTRICT NO. 1
- STATE HIGHWAYS & EXPRESSWAYS WITHIN STATE JURISDICTION (EXCEPT TOLLWAYS)
  - STATE HIGHWAYS & EXPRESSWAYS TO BE CLEANED
  - FUTURE HIGHWAYS
  - VARIOUS AGENCIES HIGHWAYS

REVISIONS	
NAME	DATE

ILLINOIS DEPARTMENT OF TRANSPORTATION

ARTERIAL CLEANING  
LOCATION MAP  
DU PAGE COUNTY  
NAPERVILLE TEAM SECTION

SCALE: VERT.      DRAWN BY  
          HORIZ.      CHECKED BY  
DATE

PLOT DATE = 5/21/2009  
FILE NAME = c:\p\work\1\PM1001\MDY\JA\08136181\SwappingContr-ao 02089.dgn  
PLOT SCALE = 52'x412' / 1" IN.  
USER NAME = mndjg

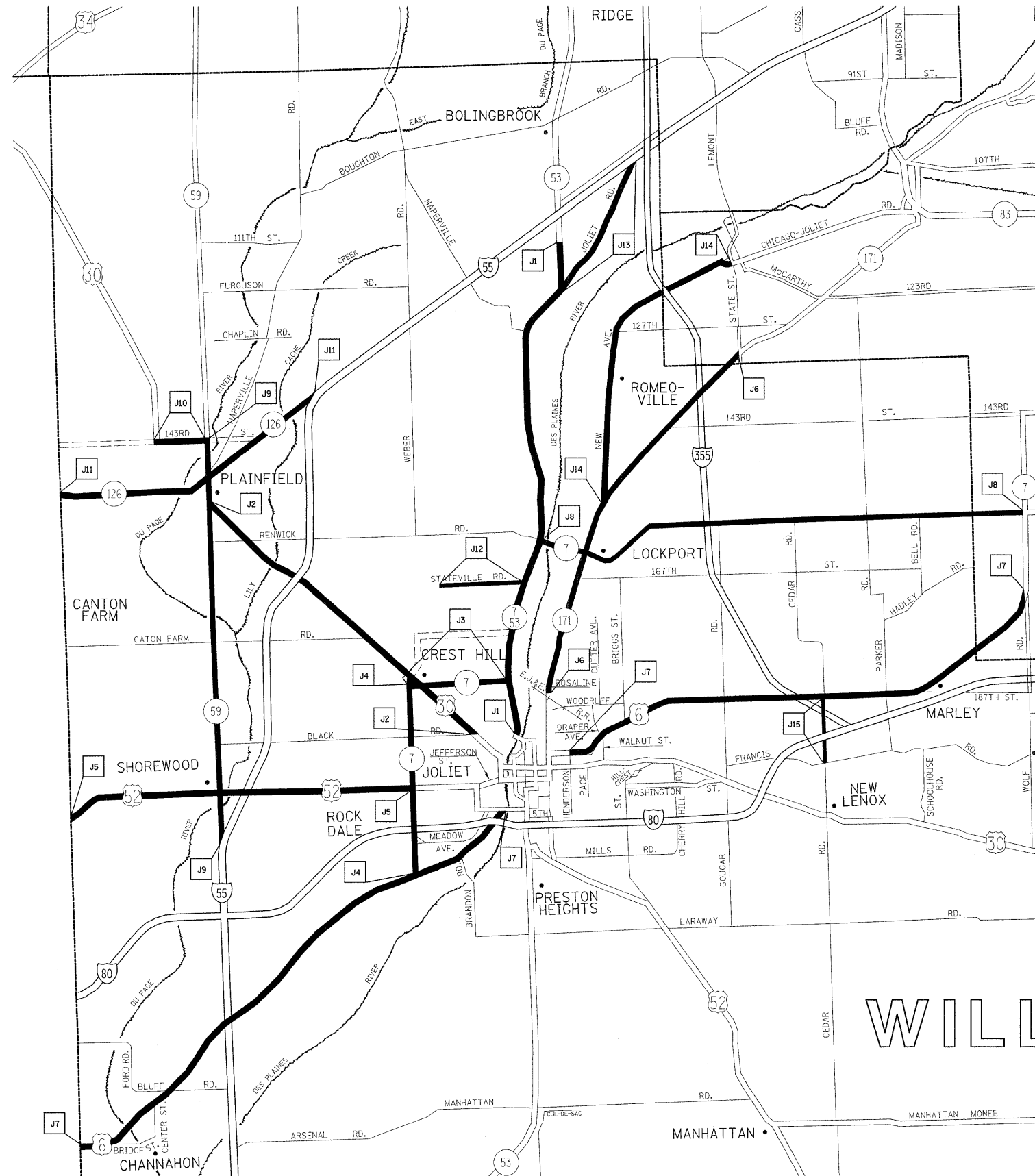


F.A. RTE.	SECTION	COUNTY	TOTAL SHEETS	SHEET NO.
VAR.	2009-041 I	*	26	22
STA.		TO STA.		
FED. ROAD DIST. NO.		ILLINOIS FED. AID PROJECT		

\*COOK, DU PAGE, KANE, LAKE, MC HENRY AND WILL



TEAM SECTION	KEY LOCATIONS
JOILET	J1 - J15



- DISTRICT NO. 1
- STATE HIGHWAYS & EXPRESSWAYS WITHIN STATE JURISDICTION (EXCEPT TOLLWAYS)
  - STATE HIGHWAYS & EXPRESSWAYS TO BE CLEANED
  - FUTURE HIGHWAYS
  - VARIOUS AGENCIES HIGHWAYS

REVISIONS	
NAME	DATE

ILLINOIS DEPARTMENT OF TRANSPORTATION

ARTERIAL CLEANING  
LOCATION MAP  
WILL COUNTY  
JOILET TEAM SECTION

SCALE: VERT. \_\_\_\_\_  
HORIZ. \_\_\_\_\_  
DATE \_\_\_\_\_

DRAWN BY \_\_\_\_\_  
CHECKED BY \_\_\_\_\_

PLOT DATE = 5/21/2009  
 FILE NAME = c:\p\work\p\p\DOT\MD\JJA\08136184\Sweeping\Contract\22891.dgn  
 PLOT SCALE = 52.9412 / IN.  
 USER NAME = mdsjjs

F.A. RTE.	SECTION	COUNTY	TOTAL SHEETS	SHEET NO.
VAR.	2009-041 I	*	18	23
STA.	TO STA.			
FED. ROAD DIST. NO.	ILLINOIS	FED. AID PROJECT		

\*COOK, DU PAGE, KANE, LAKE, MC HENRY AND WILL



TEAM SECTION	KEY LOCATIONS
NEW LENOX	NL1 - NL21

- DISTRICT NO. 1
- STATE HIGHWAYS & EXPRESSWAYS WITHIN STATE JURISDICTION (EXCEPT TOLLWAYS)
  - STATE HIGHWAYS & EXPRESSWAYS TO BE CLEANED
  - - - FUTURE HIGHWAYS
  - VARIOUS AGENCIES HIGHWAYS

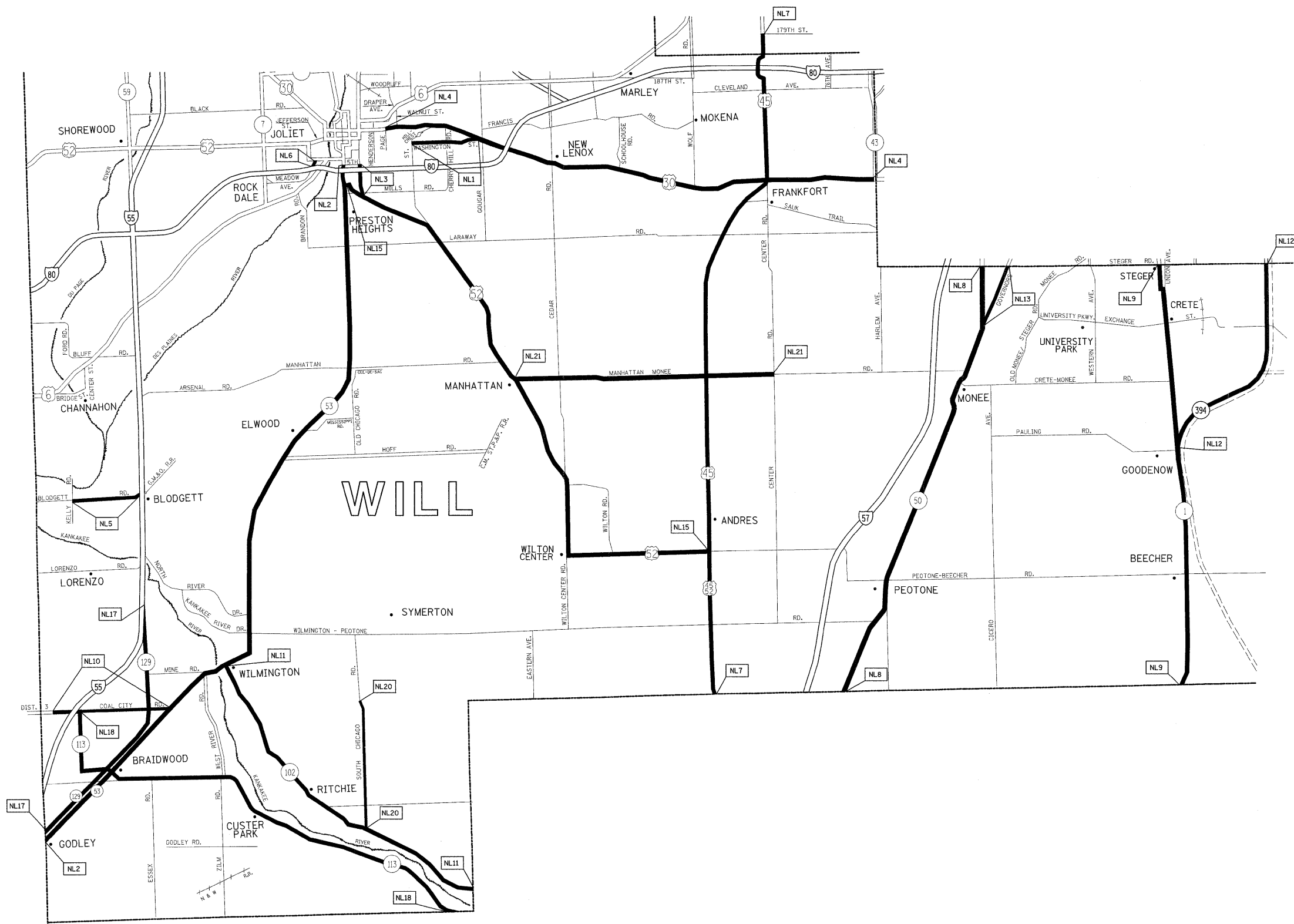
REVISIONS	
NAME	DATE

ILLINOIS DEPARTMENT OF TRANSPORTATION

ARTERIAL CLEANING  
LOCATION MAP  
WILL COUNTY  
NEW LENOX TEAM SECTION

SCALE: VERT. \_\_\_\_\_  
HORIZ. \_\_\_\_\_  
DATE \_\_\_\_\_

DRAWN BY \_\_\_\_\_  
CHECKED BY \_\_\_\_\_



PLOT DATE = 5/21/2009  
 FILE NAME = c:\work\work\VP\11007\MID\JA\0136184\Sweeping\Contr-no-2009.dgn  
 PLOT SCALE = 52.5412 / IN.  
 USER NAME = mdjup

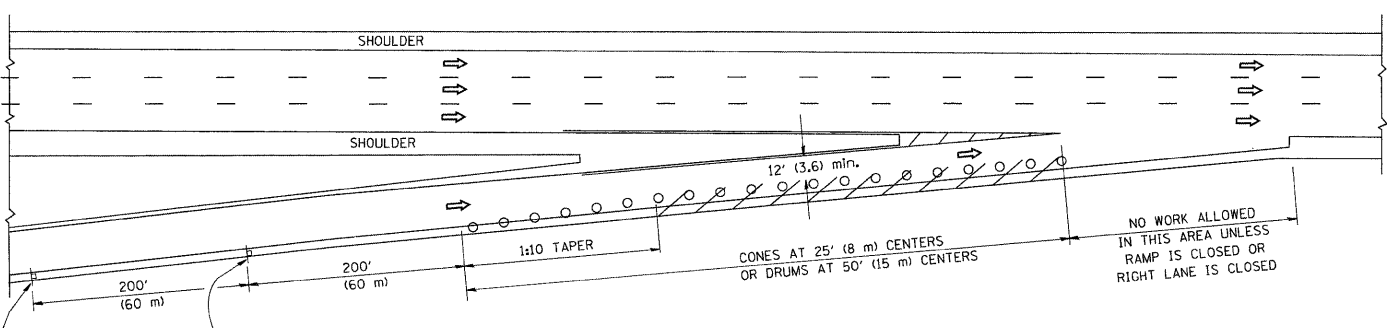




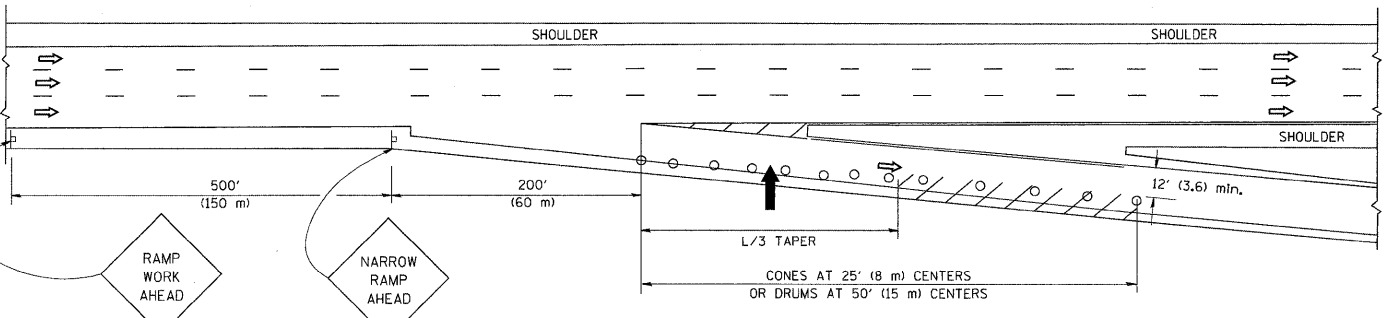
PARTIAL RAMP CLOSURE DETAILS

SHOULDER CLOSURE DETAILS

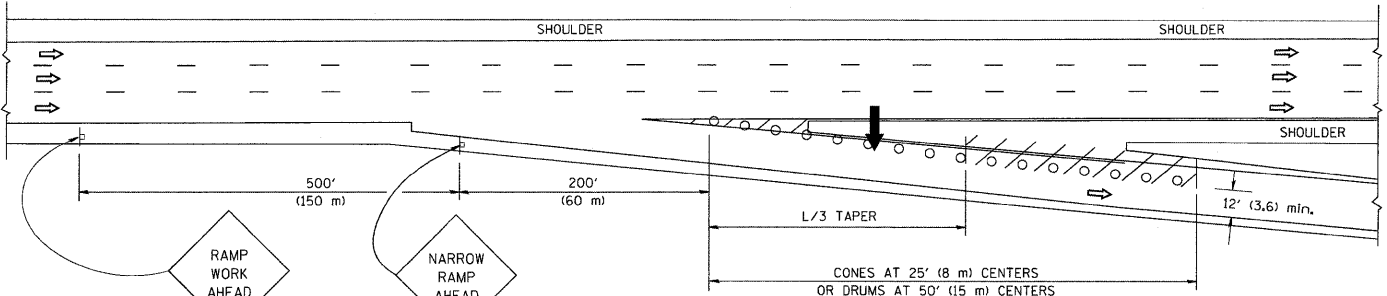
F.A. RTE.	SECTION	COUNTY	TOTAL SHEETS	SHEET NO.
VAR. 2009-041 I	*		26	26
STA.	TO STA.			
FED. ROAD DIST. NO.	ILLINOIS FED. AID PROJECT			
* COOK, DuPage, Lake, Kane, McHenry & Will				



TYPICAL ENTRANCE RAMP



TYPICAL EXIT RAMP



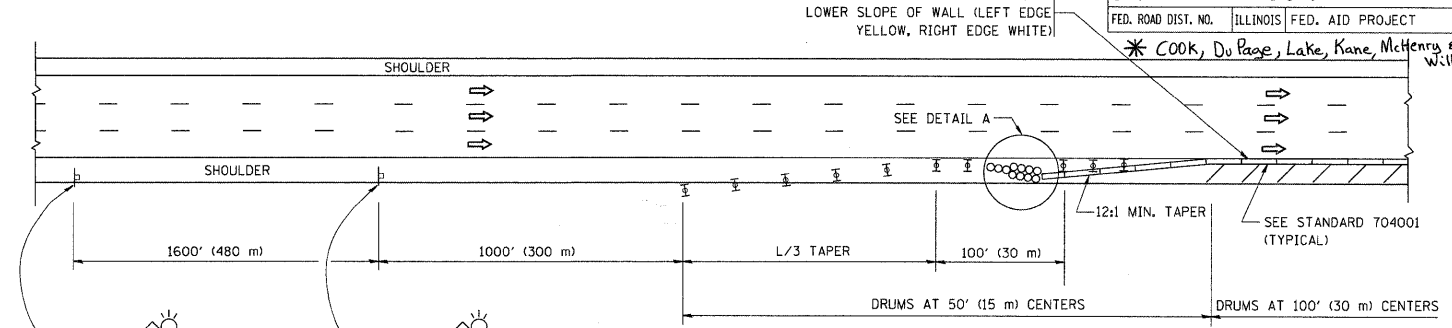
TYPICAL EXIT RAMP

SYMBOLS

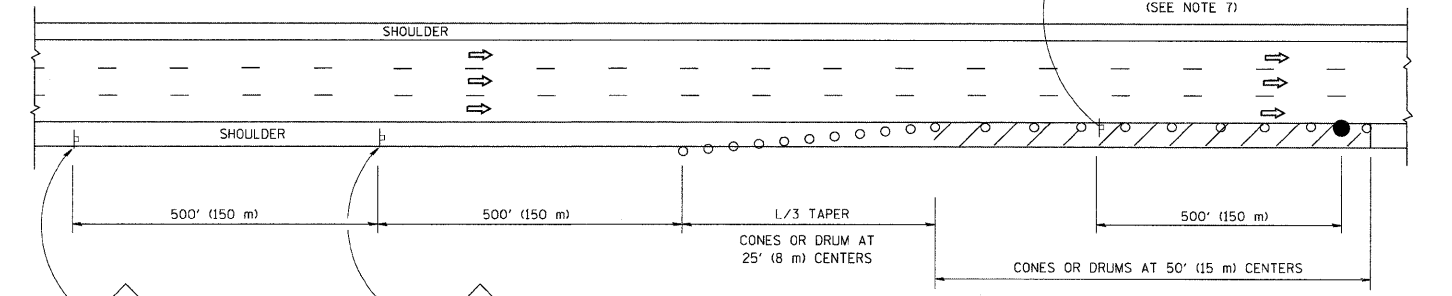
- ARROWBOARD
- WORK AREA
- SIGN ON PORTABLE OR PERMANENT SUPPORT
- FLAGGER WITH CONTROL SIGN
- TYPE II BARRICADE, DRUM OR VERTICAL BARRICADE WITH STEADY BURN MONO-DIRECTIONAL LIGHT
- CONE, DRUM OR BARRICADE

GENERAL NOTES

- THE "L" DISTANCE EQUALS:  
SPEED LIMIT                      FORMULAS  
45 mph (80 km/h)                  METRIC      ENGLISH  
OR GREATER:                      L=0.65(W)(S)      L=(W)(S)  
W = WIDTH OF OFFSET IN FEET (METERS)  
S = NORMAL POSTED SPEED MPH (KM/H)
- PLASTIC DRUMS WITH HIGH PERFORMANCE REFLECTIVE SHEETING AND STEADY BURNING LIGHTS ARE REQUIRED FOR ALL NIGHTTIME CLOSURES.
- ALL SIGNS SHALL BE POST MOUNTED IF THE CLOSURE TIME EXCEEDS FOUR DAYS.
- FLASHING LIGHTS SHALL BE USED DURING THE HOURS OF DARKNESS AND SHALL BE INSTALLED ABOVE THE FIRST TWO SETS OF SIGNS.

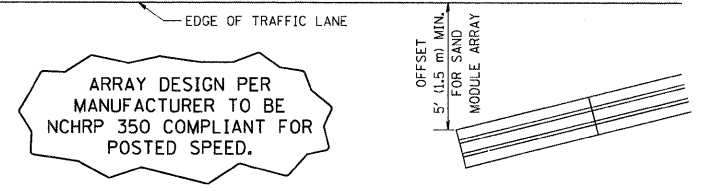


PERMANENT SHOULDER CLOSURE



DAYTIME SHOULDER CLOSURE

THIS DETAIL IS USED WHERE:  
1. VEHICLES, EQUIPMENT, WORKERS OR THEIR ACTIVITIES ENCRUCH IN AN AREA CLOSER THAN 15' (4.5 m) TO THE EDGE OF PAVEMENT FOR A PERIOD IN EXCESS OF 15 MINUTES.



DETAIL "A"  
IMPACT ATTENUATOR, TEMPORARY  
(SEE NOTE 5)

ALL DIMENSIONS ARE IN INCHES (MILLIMETERS) UNLESS OTHERWISE SHOWN.

REVISIONS	
NAME	DATE
DWS	11/96
JAF	12/02
NCHRP 350	04/03
JAF	2/06
SPB	1/07

ILLINOIS DEPARTMENT OF TRANSPORTATION  
**TRAFFIC CONTROL DETAILS FOR FREEWAY SHOULDER CLOSURES PARTIAL RAMP CLOSURES**  
DESIGNED BY: DWS  
DRAWN BY:  
CHECKED BY:  
SCALE: NONE  
TC-17