

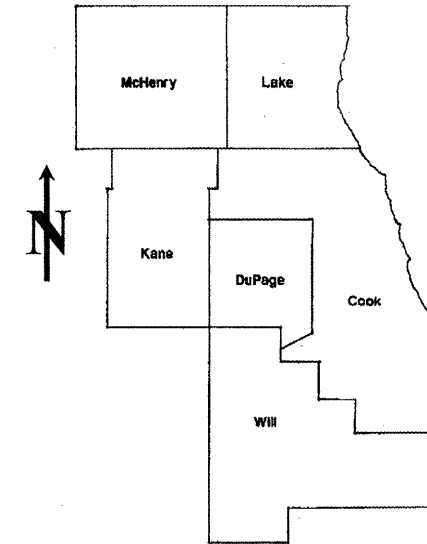
ROUTE	SECTION	COUNTY	TOTAL SHEETS	SHEET NUMBER
VARIOUS	2009-058PCC-PP	KANE & DUPAGE	25	1

STATE OF ILLINOIS
DEPARTMENT OF TRANSPORTATION
DIVISION OF HIGHWAYS
DISTRICT ONE
PROPOSED HIGHWAY PLANS

CONTRACT NO. 60H49
 D-91-732-09

FOR INDEX OF SHEETS SEE SHEET 2

VARIOUS ROUTES
 SECTION: 2009-058PCC-PP
 VARIOUS LOCATIONS IN KANE & DUPAGE COUNTIES
 P.C.C. PAVEMENT PATCHING
 KANE & DUPAGE COUNTIES
 C-91-732-09



LOCATION OF IMPROVEMENT INDICATED THUS:

DISTRICT ONE - DESIGN - PLAN PREPARATION ENGINEER:
 KEN ENG / (847) 705-4247

CONTRACT NO. 60H49

STATE OF ILLINOIS DEPARTMENT OF TRANSPORTATION DIVISION OF HIGHWAYS
SUBMITTED: <u>MAY 13, 2009</u> DEPUTY DIRECTOR OF HIGHWAYS, REGION ENGINEER
<u>June 26, 2009</u> ENGINEER OF DESIGN AND ENVIRONMENT
<u>June 26, 2009</u> DIRECTOR, DIVISION OF HIGHWAYS

PRINTED BY THE AUTHORITY
OF THE STATE OF ILLINOIS

J.U.L.I.E.: JOINT UTILITY LOCATION
INFORMATION FOR EXCAVATION
(312) 744-7000

INDEX OF SHEETS

<u>SHEET NO.</u>	<u>DESCRIPTION</u>
1	TITLE SHEET
2	INDEX OF SHEETS, STATE STANDARDS AND GENERAL NOTES
3	SUMMARY OF QUANTITIES
4	GENERAL LOCATION MAP
5	SUMMARY OF PATCHING SCHEDULE
6-15	PATCHING SCHEDULE
16	FREEWAY ENTRANCE AND EXIT RAMP CLOSURE DETAILS
17	TRAFFIC CONTROL AND PROTECTION FOR SIDE ROADS, INTERSECTIONS AND DRIVEWAYS
18	TYPICAL APPLICATIONS: RAISED REFLECTIVE PAVEMENT MARKERS (SNOW-PLOW RESISTANT)
19-20	MULTI-LANE FREEWAY PAVEMENT MARKINGS
21	DISTRICT ONE TYPICAL PAVEMENT MARKINGS
22	TRAFFIC CONTROL AND PROTECTION OF TURN BAYS (TO REMAIN OPEN TO TRAFFIC)
23	FREEWAY SHOULDER CLOSURES AND PARTIAL RAMP CLOSURES
24	ARTERIAL ROAD INFORMATION SIGN
25	STANDARD TRAFFIC SIGNAL DESIGN DETAILS

STATE STANDARDS

<u>STANDARD NO.</u>	<u>DESCRIPTION</u>
000001-05	TYPICAL SYMBOLS, ABBREVIATIONS AND PATTERNS
442101-07	CLASS B PATCHES
701411-05	LANE CLOSURE, MULTILANE, AT ENTRANCE OR EXIT RAMP
701421-02	LANE CLOSURE, MULTILANE, DAY OPERATIONS ONLY
701422-02	LANE CLOSURE, MULTILANE
701426-03	LANE CLOSURE, MULTILANE, INTERMITTENT OR MOVING OPERATIONS
701601-04	URBAN LANE CLOSURE, MULTILANE, 1W OR 2W WITH NONTRAVERSABLE MEDIAN
701602-04	URBAN LANE CLOSURE, MULTILANE, 2W WITH BIDIRECTIONAL LEFT TURN LANE
701606-06	URBAN LANE CLOSURE, MULTILANE, 2W WITH MOUNTABLE MEDIAN
701701-04	URBAN LANE CLOSURE, MULTILANE INTERSECTION
701901-01	TRAFFIC CONTROL DEVICES

GENERAL NOTES

BEFORE STARTING ANY EXCAVATION, THE CONTRACTOR SHALL CALL "JULIE" AT (800) 892-0123 OR 811 FOR FIELD LOCATIONS OF BURIED ELECTRIC, TELEPHONE AND GAS FACILITIES. (48 HOUR NOTIFICATION REQUIRED)

THE CONTRACTOR WILL NOT BE ALLOWED TO SET UP A YARD OR FIELD OFFICE ON STATE (OR TOLLWAY) PROPERTY WITHOUT WRITTEN PERMISSION FROM THE DEPARTMENT (OR ISTHA)

WHEN ARTIFICIAL LIGHTING IS UTILIZED IN NIGHT OPERATIONS, THE CONTRACTOR SHALL EXERCISE THE UTMOST PRECAUTIONS IN PREVENTING ADVERSE VISIBILITY TO THE MOTORING PUBLIC AND ADJOINING RESIDENTIAL AREAS.

BEFORE BEGINNING ANY WORK, THE CONTRACTOR SHALL RETAIN AND RECORD FOR FUTURE REFERENCE, ALL EXISTING PAVEMENT MARKING LINES (AND RAISED REFLECTIVE PAVEMENT MARKERS) IN ORDER THAT THESE LOCATIONS CAN BE RE-ESTABLISHED FOR STRIPING. EXACT LOCATIONS OF ALL PAVEMENT MARKINGS SHALL BE AS DIRECTED BY THE ENGINEER.

ALL PAVEMENT PATCHING LOCATIONS WILL BE DETERMINED IN THE FIELD BY THE ENGINEER.

THE CONTRACTOR SHALL CONTACT THE DISTRICT ONE TRAFFIC CONTROL SUPERVISOR AT (847) 705-4470 A MINIMUM OF 72 HOURS IN ADVANCE OF BEGINNING WORK ON ALL ARTERIAL ROUTES AND (847) 705-4155 FOR WORK ON ALL EXPRESWAY LOCATIONS.

THE ENGINEER SHALL CONTACT MR. DON CHIARUGI, AREA TRAFFIC FIELD ENGINEER AT (847) 741-9857 MINIMUM OF TWO (2) WEEKS PRIOR TO PLACEMENT OF PERMANENT PAVEMENT MARKINGS.

DOUBLE LANE MARKERS ARE TO BE USED AS SHOWN ON THE DISTRICT ONE DETAIL "TYPICAL APPLICATIONS - RAISED REFLECTIVE PAVEMENT MARKERS (SNOW-PLOW RESISTANT)" SHOWN IN THE PLANS.

THE EXISTING ROADWAY TYPICAL SECTION IS ASSUMED TO BE 10 INCHES OF PORTLAND CEMENT CONCRETE (PCC) PAVEMENT.

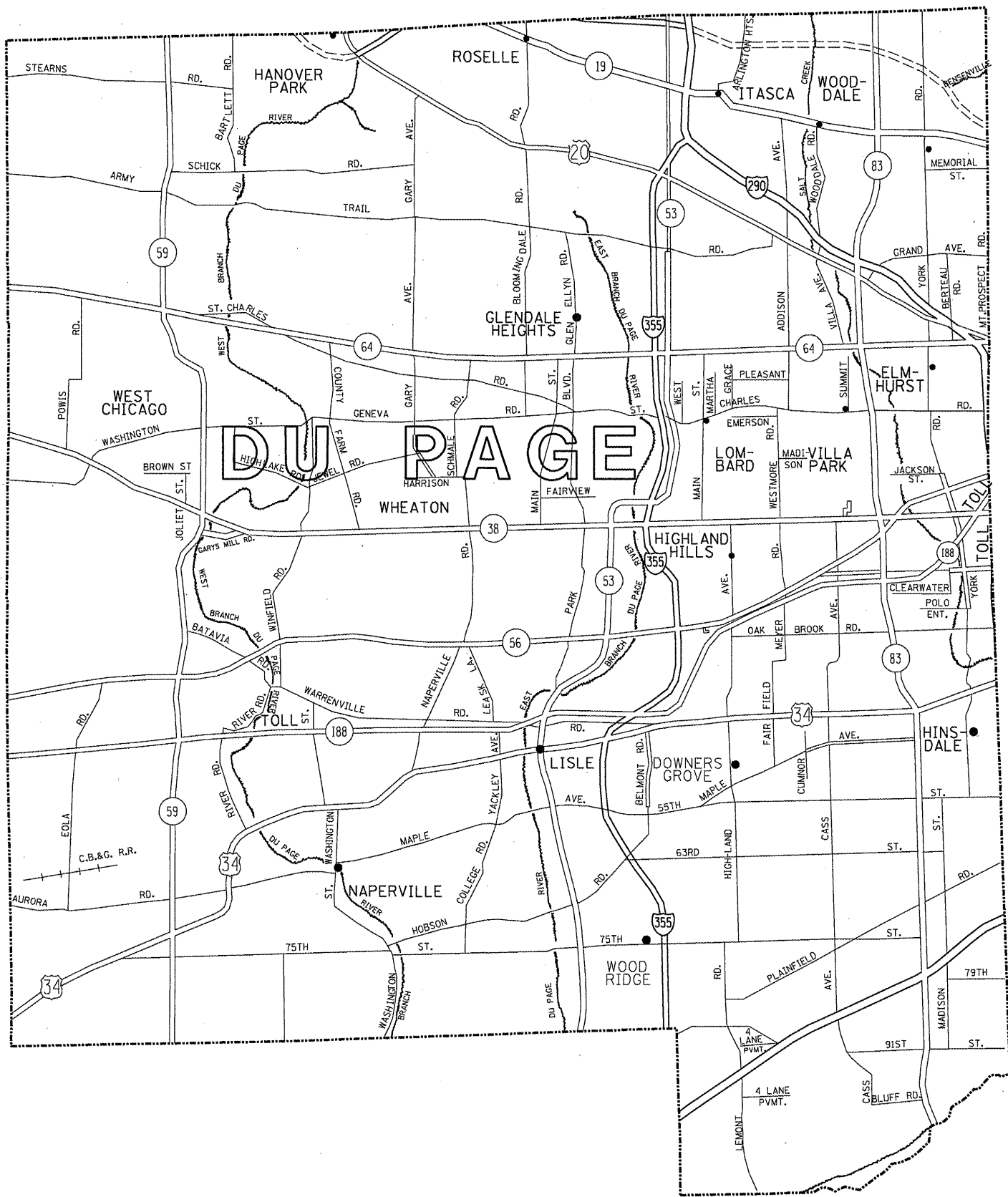
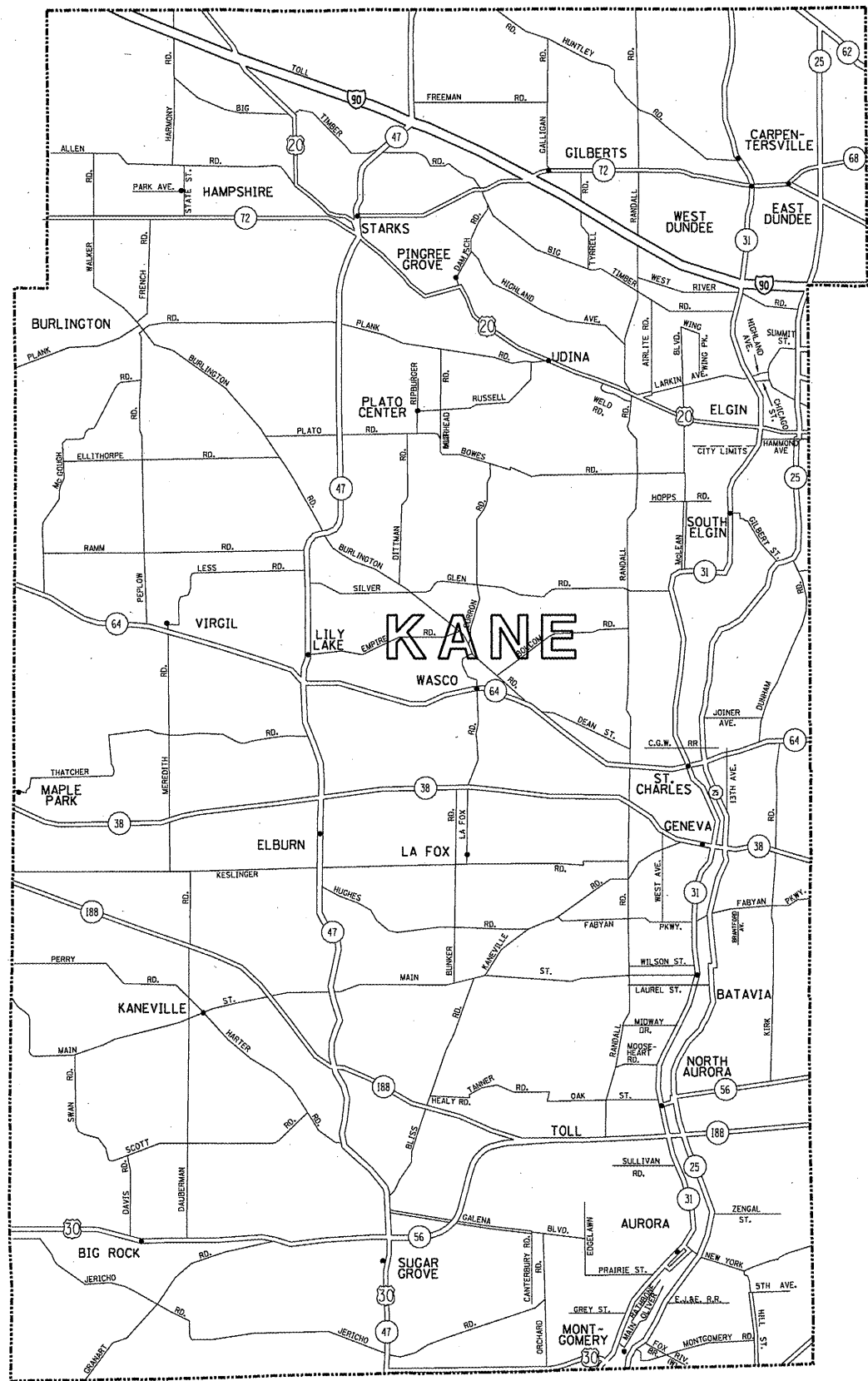
NO PATCHING IS TO BE DONE WITH IN 50 FEET OF ANY RAILROAD.

THE COST OF TRAFFIC CONTROL AND PROTECTION FOR THE PROJECT (EXCLUDING THE ELGIN O'HARE RAMP LOCATIONS) SHALL BE INCLUDED IN THE COST OF THE ASSOCIATED ROAD WORK. TRAFFIC CONTROL AND PROTECTION FOR THE ELGIN O'HARE RAMPS ARE TO BE PAID FOR AS TRAFFIC CONTROL AND PROTECTION (EXPRESSWAYS)

FOR ALL PATCHING ON THE ELGIN-O'HARE EXPRESSWAY RAMPS AT MEACHAM RD., CLASS PP-3 PORTLAND CEMENT CONCRETE IS TO BE USED.

FILE NAME =	USER NAME = wilgreendp	DESIGNED -	REVISED -	STATE OF ILLINOIS DEPARTMENT OF TRANSPORTATION	INDEX OF SHEETS, STATE STANDARDS AND GENERAL NOTES	F.A. RTE.	SECTION	COUNTY	TOTAL SHEETS	SHEET NO.
ct:\pwork\PWIDOT\WILGREENDP\0125047\Design.dgn	DRAWN -	REVISED -	VAR.			2009-058PCC-PP	KANE & DUP.	25	2	
PLOT SCALE = 100.0000' / IN.	CHECKED -	REVISED -	CONTRACT NO. 60H49							
PLOT DATE = 5/19/2009	DATE -	REVISED -	SCALE:			SHEET NO.	OF SHEETS	STA.	TO STA.	FED. ROAD DIST. NO. 1 ILLINOIS FED. AID PROJECT

SUMMARY OF QUANTITIES			CONSTRUCTION TYPE CODE						SUMMARY OF QUANTITIES			CONSTRUCTION TYPE CODE							
CODE NO	ITEM	UNIT	URBAN TOTAL QUANTITIES	KANE COUNTY 1000	DUPAGE COUNTY 1000					CODE NO	ITEM	UNIT	TOTAL QUANTITIES						
44001700	COMBINATION CONCRETE CURB AND GUTTER REMOVAL AND REPLACEMENT	FOOT	500	200	300														
44200966	CLASS B PATCHES, TYPE I, 10 INCH	SO YD	752		752														
44200970	CLASS B PATCHES, TYPE II, 10 INCH	SO YD	5333	4395	938														
44200974	CLASS B PATCHES, TYPE III, 10 INCH	SO YD	434	158	276														
44200976	CLASS B PATCHES, TYPE IV, 10 INCH	SO YD	1049	805	244														
44213200	SAW CUTS	FOOT	35474	23878	11596														
60300305	FRAMES AND LIDS TO BE ADJUSTED	EACH	24	16	8														
67000400	ENGINEER'S FIELD OFFICE, TYPE A	CAL MO	6	4	2														
67100100	MOBILIZATION	L SUM	1	0.5	0.5														
70103815	TRAFFIC CONTROL SURVEILLANCE	CAL DA	12	6	6														
*78008200	POLYUREA PAVEMENT MARKING TYPE I - LETTERS AND SYMBOLS	SO FT	275	200	75														
*78008210	POLYUREA PAVEMENT MARKING TYPE I - LINE 4"	FOOT	11754	8038	3716														
*78008230	POLYUREA PAVEMENT MARKING TYPE I - LINE 6"	FOOT	350	250	100														
*78008270	POLYUREA PAVEMENT MARKING TYPE I - LINE 24"	FOOT	150	100	50														
*78100100	RAISED REFLECTIVE PAVEMENT MARKER	EACH	142	100	42														
*88600600	DETECTOR LOOP REPLACEMENT	FOOT	780	580	200														
X0322256	TEMPORARY INFORMATION SIGNING	SO FT	308.4	154.2	154.2														
X7011015	TRAFFIC CONTROL AND PROTECTION (EXPRESSWAYS)	L SUM	1		1														
X7013820	TRAFFIC CONTROL SURVEILLANCE, EXPRESSWAYS	CAL DA	4		4														
Z0017202	DOWEL BARS 1 1/2"	EACH	20518	13959	6559														
Z0075330	TIE BARS 1 1/4"	EACH	11055	7260	3795														
* SPECIALTY ITEM																			



FILE NAME =
 c:\pwwork\pwwid\WILGREEND\0125047.dwg
 USER NAME = wilgreend
 DESIGNED -
 DRAWN -
 PLOT SCALE = 100.0000' / IN.
 CHECKED -
 PLOT DATE = 5/19/2009

DESIGNED -
 DRAWN -
 CHECKED -
 DATE -

REVISED -
 REVISED -
 REVISED -
 REVISED -

STATE OF ILLINOIS
 DEPARTMENT OF TRANSPORTATION

GENERAL LOCATION MAP - KANE AND DUPAGE COUNTIES

SCALE: SHEET NO. OF SHEETS STA. TO STA.

F.A. RTE.	SECTION	COUNTY	TOTAL SHEETS	SHEET NO.
VAR.	2009-058PCC-PP	KANE & DUP.	25	4
			CONTRACT NO. 60H49	
ILLINOIS FED. AID PROJECT				

ROUTE: IL 64 From County Farm Rd. to Main St./Glen Ellyn Rd.

CROSS STREETS		DIRECTION (EB/WB) (NB/SB)	LANE NO. (1, 2, 3)	PAVEMENT PATCH WIDTH	PAVEMENT PATCH LENGTH	REPAIR AREA (SQ FT)	REPAIR AREA (SQ YD)
FROM	TO						
Glen Ellyn Rd.	At the intersection	WB	3	12	6	72	8
	100' W of Glen Ellyn Rd	WB	1	12	3	36	4
	100' W of Glen Ellyn Rd	WB	2	12	3	36	4
	200' West of Glen Ellyn Rd	WB	1	12	3	36	4
	200' West of Glen Ellyn Rd	WB	2	12	6	72	8
	200' West of Glen Ellyn Rd	WB	3	12	4	48	5
	500' West of Glen Ellyn Rd	WB	2	12	3	36	4
	500' West of Glen Ellyn Rd	WB	3	12	3	36	4
	1000' West of Glen Ellyn Rd	WB	1	12	3	36	4
	1000' West of Glen Ellyn Rd	WB	2	12	3	36	4
	1000' West of Glen Ellyn Rd	WB	3	12	3	36	4
	1100' West of Glen Ellyn Rd	WB	2	6	3	18	2
At Pearl Ave		WB	1	12	3	36	4
		WB	2	12	3	36	4
		WB	3	12	3	36	4
AMY AVE	50' east of Amy Ave	WB	1	12	3	36	4
		WB	2	12	3	36	4
		WB	3	12	3	36	4
AMY AVE	50' west of Amy Ave	WB	1	12	3	36	4
	50' west of Amy Ave	WB	2	12	3	36	4
	50' west of Amy Ave	WB	3	12	3	36	4
	70' west of Amy Ave	WB	1	12	3	36	4
	70' west of Amy Ave	WB	2	12	3	36	4
	70' west of Amy Ave	WB	3	12	3	36	4
At Virginia Ave		WB	1	12	3	36	4
		WB	2	12	5	60	7
		WB	3	12	3	36	4
Diane Ave	20' West of Diane ave	WB	1	12	3	36	4
	20' West of Diane ave	WB	2	12	3	36	4
	20' West of Diane ave	WB	3	12	3	36	4
	100' West of Diane ave	WB	1	12	3	36	4
	100' West of Diane ave	WB	2	12	3	36	4
	100' West of Diane ave	WB	3	12	3	36	4
BLOOMINGDALE AVE	100' E of Bloomingdale Ave	WB	2	12	6	72	8
	100' W of Bloomingdale Ave	WB	1	12	3	36	4
	100' E of Bloomingdale Ave	WB	2	12	4	48	5
Bloomingtondale Road	100' W of Bloomingdale Rd.	WB	3	12	12	144	16
Bloomingtondale Road	Roberta Ave	WB	2	12	12	144	16
Bloomingtondale Road	Roberta Ave	WB	3	12	3	36	4
Bloomingtondale Road	Roberta Ave	WB	1	12	3	36	4
Bloomingtondale Road	Roberta Ave	WB	2	12	3	36	4
Bloomingtondale Road	Roberta Ave	WB	3	12	3	36	4
Bloomingtondale Road	Roberta Ave	WB	1	12	3	36	4
Bloomingtondale Road	Roberta Ave	WB	3	12	4	48	5
Bloomingtondale Road	Roberta Ave	WB	3	6	4	24	3
Bloomingtondale Road	Roberta Ave	WB	2	8	50	400	44
Bloomingtondale Road	Roberta Ave	WB	3	4	6	24	3
Bloomingtondale Road	Roberta Ave	WB	2	12	12	144	16
ROBERTA AVE	100' W Roberta Ave	WB	3	12	6	72	8
PRESIDENT ST	100' W of President St	WB	1	12	3	36	4
	100' W of President St	WB	2	12	3	36	4
	600' W of President St	WB	1	12	3	36	4
	600' W of President St	WB	2	12	3	36	4
	600' W of President St	WB	3	12	3	36	4

ROUTE: IL 64 From County Farm Rd. to Main St./Glen Ellyn Rd.

CROSS STREETS		DIRECTION (EB/WB) (NB/SB)	LANE NO. (1, 2, 3)	PAVEMENT PATCH WIDTH	PAVEMENT PATCH LENGTH	REPAIR AREA (SQ FT)	REPAIR AREA (SQ YD)
FROM	TO						
President Street	1000' W of President St	WB	2	12	8	96	11
SCHMALE RD	At intersection	WB	3	12	4	48	5
	At intersection	WB	3	12	4	48	5
	100' W of Schmale Rd.	WB	3	12	3	36	4
	200' W of Schmale Rd.	WB	1	6	12	72	8
	200' W of Schmale Rd.	WB	2	12	12	144	16
	200' W of Schmale Rd.	WB	3	12	12	144	16
	1500' W of Schmale Rd.	WB	2	4	6	24	3
	2000' W of Schmale Rd.	WB	2	12	12	144	16
GARY AVE	1000' E of Gary Ave	WB	1	12	3	36	4
	1000' E of Gary Ave	WB	2	12	3	36	4
	1000' E of Gary Ave	WB	3	12	3	36	4
	50' W of Gary Ave	WB	2	6	4	24	3
	300' W of Gary Ave	WB	3	4	4	16	2
	600' W of Gary Ave	WB	1	12	3	36	4
	600' W of Gary Ave	WB	2	12	3	36	4
	600' W of Gary Ave	WB	3	12	3	36	4
GARY AVE	1000' W of Gary Ave	WB	2	12	3	36	4
	1000' W of Gary Ave	WB	3	12	3	36	4
	1500' W of Gary Ave	WB	2	12	4	48	5
KUHN RD	100' W of Kuhn Rd	WB	3	12	3	36	4
COUNTY FARM RD	25' E of county farm rd.	EB	1	12	3	36	4
	1000' E of county farm rd.	EB	3	6	4	24	3
KUHN ROAD	200' W of kuhn rd	EB	3	6	4	24	3
GARY AVE	1000' W of gary ave	EB	1	12	3	36	4
	1000' W of gary ave	EB	2	12	3	36	4
	1000' W of gary ave	EB	3	12	3	36	4
	900' W of gary ave	EB	1	12	4	48	5
	900' W of gary ave	EB	2	12	4	48	5
	900' W of gary ave	EB	3	12	4	48	5
	850' W of gary ave	EB	1	12	4	48	5
	850' W of gary ave	EB	2	12	4	48	5
	850' W of gary ave	EB	3	12	4	48	5
	800' W of gary ave	EB	1	12	3	36	4
	800' W of gary ave	EB	2	12	3	36	4
	800' W of gary ave	EB	3	12	3	36	4
	775' W of gary ave	EB	3	12	3	36	4
	770' W of gary ave	EB	1	12	3	36	4
	770' W of gary ave	EB	2	12	3	36	4
	770' W of gary ave	EB	3	12	3	36	4
GARY AVE	750' W of gary ave	EB	1	12	3	36	4
	750' W of gary ave	EB	2	12	3	36	4
	750' W of gary ave	EB	3	12	3	36	4
	500' W of gary ave	EB	1	12	4	48	5
	500' W of gary ave	EB	2	12	4	48	5
	500' W of gary ave	EB	3	12	4	48	5
	100' W of gary ave	EB	3	12	6	72	8
	At Gary Ave	EB	2	12	6	72	8
	50' E of Gary Ave	EB	2	6	6	36	4
	200' E of Gary Ave	EB	2	4	4	16	2
	250' E of Gary Ave	EB	2	4	4	16	2
	300' E of Gary Ave	EB	1	12	4	48	5
	300' E of Gary Ave	EB	2	12	4	48	5
	300' E of Gary Ave	EB	3	12	4	48	5
	350' E of Gary Ave	EB	1	12	3	36	4
	350' E of Gary Ave	EB	2	12	3	36	4
	350' E of Gary Ave	EB	3	12	3	36	4

CONTINUED ON NEXT SHEET

FILE NAME =	USER NAME = wilgreendp	DESIGNED -	REVISED -	STATE OF ILLINOIS DEPARTMENT OF TRANSPORTATION	PATCHING SCHEDULE IL 64	F.A. RTE.	SECTION	COUNTY	TOTAL SHEETS	SHEET NO.
ct:\pw\work\PW\IDOT\WILGREENDP\d0125047\design.dgn	DRAWN -	REVISED -	VAR.			2009-05BPC-PP	KANE & DUP.	25	7	
PLOT SCALE = 1/8" = 100.0000' / IN.	CHECKED -	REVISED -	CONTRACT NO. 60H49							
PLOT DATE = 5/19/2009	DATE -	REVISED -	FED. ROAD DIST. NO. 1 ILLINOIS FED. AID PROJECT							
				SCALE:	SHEET NO. OF SHEETS STA.	TO STA.				

ROUTE: IL 64 From County Farm Rd. to Main St./Glen Ellyn Rd.

CROSS STREETS		DIRECTION (EB/WB) (NB/SB)	LANE NO. (1, 2, 3)	PAVEMENT PATCH WIDTH	PAVEMENT PATCH LENGTH	REPAIR AREA (SQ FT)	REPAIR AREA (SQ YD)
FROM	TO						
SCHMALE RD.	1000'W of Schmale	EB	3	12	4	48	5
	500'W of Schmale	EB	1	12	4	48	5
	500'W of Schmale	EB	2	12	4	48	5
	500'W of Schmale	EB	3	12	4	48	5
	AT SCHMALE	EB	1	12	4	48	5
	AT SCHMALE	EB	2	12	4	48	5
	AT SCHMALE	EB	3	12	4	48	5
	50' E of Schmale	EB	1	12	3	36	4
	50' E of Schmale	EB	2	12	3	36	4
	50' E of Schmale	EB	12	12	3	36	4
	100' E of Schmale	EB	1	12	4	48	5
	100' E of Schmale	EB	2	12	4	48	5
	100' E of Schmale	EB	3	12	4	48	5
	150' E of Schmale	EB	2	12	3	36	4
	150' E of Schmale	EB	3	12	3	36	4
	250' E of Schmale	EB	2	12	3	36	4
	250' E of Schmale	EB	3	12	3	36	4
	350' E of Schmale	EB	1	12	3	36	4
	350' E of Schmale Rd	EB	2	12	3	36	4
	350' E of Schmale Rd	EB	3	12	3	36	4
PRESIDENT STREET	500' west	EB	2	12	3	36	4
	500' west	EB	3	12	3	36	4
	300' west	EB	1	12	3	36	4
	300' west	EB	2	12	3	36	4
	300' west	EB	3	12	3	36	4
	150' west	EB	2	12	3	36	4
	50' east	EB	1	12	3	36	4
	50' east	EB	2	12	3	36	4
	50' east	EB	3	12	3	36	4
	At Andover Dr	EB	1	12	4	48	5
	At Andover Dr	EB	2	12	4	48	5
	At Concord	EB	2	12	4	48	5
	At Concord	EB	3	12	4	48	5
BLOOMINGDALE RD	300' west	EB	1	12	4	48	5
	300' west	EB	2	12	4	48	5
	300' west	EB	3	12	4	48	5
BLOOMINGDALE ROAD	275' west	EB	1	12	4	48	5
	275' west	EB	2	12	4	48	5
	275' west	EB	3	12	4	48	5
	250' west	EB	1	12	3	36	4
	250' west	EB	2	12	3	36	4
	250' west	EB	3	12	3	36	4
	100' west	EB	1	12	3	36	4
	100' west	EB	2	12	3	36	4
	100' west	EB	3	12	3	36	4
	50' west	EB	1	12	3	36	4
	50' west	EB	2	12	3	36	4
	50' west	EB	3	12	3	36	4
	40' west	EB	1	12	3	36	4
	30' west	EB	1	12	3	36	4
	30' east	EB	1	12	3	36	4
	30' east	EB	2	12	3	36	4
	30' east	EB	3	12	3	36	4
	100' east	EB	1	12	4	48	5

ROUTE: IL 64 From County Farm Rd. to Main St./Glen Ellyn Rd.

CROSS STREETS		DIRECTION (EB/WB) (NB/SB)	LANE NO. (1, 2, 3)	PAVEMENT PATCH WIDTH	PAVEMENT PATCH LENGTH	REPAIR AREA (SQ FT)	REPAIR AREA (SQ YD)
FROM	TO						
BLOOMINGDALE ROAD	100' east	EB	2	12	4	48	5
	100' east	EB	3	12	4	48	5
	200' east	EB	3	12	8	96	11
	250' east	EB	3	12	8	96	11
	500' east	EB	1	12	4	48	5
	500' east	EB	2	12	4	48	5
	500' east	EB	3	12	4	48	5
	700' east	EB	1	12	4	48	5
	700' east	EB	2	12	4	48	5
	700' east	EB	3	12	8	96	11
	725' east	EB	1	12	3	36	4
	725' east	EB	2	12	3	36	4
	725' east	EB	3	12	3	36	4
	800' east	EB	1	12	4	48	5
	800' east	EB	2	12	4	48	5
	800' east	EB	3	12	4	48	5
AT EVERGREEN		EB	3	12	8	96	11
	50' east	EB	2	12	8	96	11
	50' E of Evergreen	EB	3	12	3	36	4
AT Newton		EB	2	12	4	48	5
		EB	3	12	4	48	5
WESTERN	100' east	EB	1	12	6	72	8
	100' east	EB	2	12	3	36	4
	100' east	EB	3	12	3	36	4
	125' east	EB	1	12	3	36	4
	125' east	EB	2	12	3	36	4
	125' east	EB	3	12	3	36	4
	700' east	EB	1	12	3	36	4
	700' east	EB	2	12	3	36	4
	700' east	EB	3	12	3	36	4
	1000' east	EB	1	12	3	36	4
	1000' east	EB	2	12	4	48	5
	1000' east	EB	3	12	6	72	8
GLEN ELLYN RD	200' west	EB	1	12	3	36	4
	200' west	EB	2	12	4	48	5
	20' west	EB	1	12	8	96	11

TOTALS: 843 FT 1056 SY

ROUTE: US 20 from Shales Parkway to IL 59

CROSS STREETS		DIRECTION (EB/WB) (NB/SB)	LANE NO. (1, 2, 3)	PAVEMENT PATCH WIDTH	PAVEMENT PATCH LENGTH	REPAIR AREA (SQ FT)	REPAIR AREA (SQ YD)
FROM	TO						
Conc. Pvmt. E/O Shales	IL 59	EB	1	12	6	72	8
		EB	2	12	6	72	8
		EB	1	12	6	72	8
		EB	2	12	6	72	8
		EB	1	12	10	120	13
		EB	2	12	10	120	13
		WB	1	12	8	96	11
		WB	2	12	8	96	11
		WB	1	12	6	72	8
		WB	2	12	6	72	8
		EB	1	12	6	72	8
		EB	2	12	6	72	8
		WB	2	12	6	72	8
		EB	RT Turn	12	6	72	8
		EB	1	12	6	72	8
		EB	2	12	6	72	8
		EB	RT Turn	12	6	72	8
		WB	1	12	6	72	8
		WB	2	12	6	72	8
		EB	1	12	6	72	8
		EB	2	12	6	72	8
		EB	1	12	6	72	8
		EB	2	12	6	72	8
		WB	1	12	6	72	8
		WB	1	12	6	72	8
Conc. Pvmt. E/O Shales	IL 59	WB	1	12	6	72	8
		WB	2	12	6	72	8
		WB	1	12	6	72	8
		WB	LT Turn	12	6	72	8
		WB	2	12	6	72	8
		WB	1	12	6	72	8
		WB	2	12	6	72	8
		EB	1	12	6	72	8
		EB	2	12	6	72	8
		EB	1	12	6	72	8
		EB	2	12	6	72	8
		EB	1	12	6	72	8
		EB	2	12	6	72	8
		WB	1	12	6	72	8
		WB	1	12	6	72	8
		WB	1	12	6	72	8
		WB	2	12	10	120	13
		WB	1	12	8	96	11
		WB	2	12	12	144	16
		WB	1	12	6	72	8
		WB	1	12	6	72	8
		WB	2	12	6	72	8
		EB	1	12	12	144	16
		EB	2	12	12	144	16
		WB	1	12	6	72	8
		WB	2	12	6	72	8
		EB	2	12	6	72	8
		EB	1	12	10	120	13
		EB	2	12	10	120	13
		WB	2	12	8	96	11
		WB	RT Turn	12	12	144	16

TOTALS: 406 FT 541 SY

FILE NAME =	USER NAME = wilgreendp	DESIGNED -	REVISED -	STATE OF ILLINOIS DEPARTMENT OF TRANSPORTATION	PATCHING SCHEDULE US 20	F.A. RTE.	SECTION	COUNTY	TOTAL SHEETS	SHEET NO.	
cd:\pw_work\PWIDOT\WILGREENDP\d0125047\design.dgn		DRAWN -	REVISED -			VAR.	2009-058PCC-PP	KANE & DUP.	25	9	
PLOT SCALE = 100.0000' / IN.		CHECKED -	REVISED -			CONTRACT NO. 60H49					
PLOT DATE = 5/19/2009		DATE -	REVISED -			SCALE:	SHEET NO.	OF	SHEETS	STA.	TO STA.

ROUTE: IL 62 from East of IL 25 to Sandbloom Rd./Countryside Dr.

CROSS STREETS		DIRECTION (EB/WB) (NB/SB)	LANE NO. (1, 2, 3)	PAVEMENT PATCH WIDTH	PAVEMENT PATCH LENGTH	REPAIR AREA (SQ FT)	REPAIR AREA (SQ YD)
FROM	TO						
Rte 25	e/o Rte 25	EB	1	12	6	72	8
Rte 25	e/o Rte 25	EB	2	12	6	72	8
Rte 25	e/o Rte 25	EB	1	12	6	72	8
Rte 25	e/o Rte 25	EB	2	12	8	96	11
Rte 25	e/o Rte 25	EB	1	12	6	72	8
Rte 25	e/o Rte 25	EB	2	12	6	72	8
Rte 25	e/o Rte 25	EB	1	15	5	75	8
e/o Rte 25	Rte 25	WB	1	15	5	75	8
e/o Rte 25	Rte 25	WB	1	12	8	96	11
e/o Rte 25	Rte 25	WB	1	12	6	72	8
e/o Rte 25	Rte 25	WB	lt	12	6	72	8
e/o Rte 25	Rte 25	WB	1	12	6	72	8
e/o Rte 25	Rte 25	WB	lt	16	6	96	11
e/o Rte 25	Rte 25	WB	1	12	6	72	8
e/o Rte 25	Rte 25	WB	2	12	6	72	8
e/o Rte 25	Rte 25	WB	2	10	6	60	7
e/o Rte 25	Rte 25	WB	2	12	6	72	8
Rte 25	Lake Cook Rd.	WB	2	12	6	72	8
Rte 25	Lake Cook Rd.	WB	2	12	6	72	8
Rte 25	Lake Cook Rd.	WB	1	12	6	72	8
Rte 25	Lake Cook Rd.	WB	2	12	6	72	8
Lake Cook Rd.	Country Side Drive	WB	med	12	6	72	8
Lake Cook Rd.	Country Side Drive	WB	med	12	6	72	8
Lake Cook Rd.	Country Side Drive	WB	1	12	6	72	8
Lake Cook Rd.	Country Side Drive	WB	1	12	8	96	11
Lake Cook Rd.	Country Side Drive	WB	2	12	6	72	8
Lake Cook Rd.	Country Side Drive	WB	1	12	6	72	8
Lake Cook Rd.	Country Side Drive	WB	2	12	6	72	8
Lake Cook Rd.	Country Side Drive	WB	1	12	6	72	8
Lake Cook Rd.	Country Side Drive	WB	2	12	6	72	8
Lake Cook Rd.	Country Side Drive	WB	1	12	6	72	8
Lake Cook Rd.	Country Side Drive	WB	2	12	6	72	8
Lake Cook Rd.	Country Side Drive	WB	1	12	6	72	8
Lake Cook Rd.	Country Side Drive	WB	2	12	6	72	8
Lake Cook Rd.	Country Side Drive	WB	1	12	6	72	8
Lake Cook Rd.	Country Side Drive	WB	2	12	30	360	40
Lake Cook Rd.	Country Side Drive	WB	1	12	20	240	27
Lake Cook Rd.	Country Side Drive	WB	2	12	30	360	40
Lake Cook Rd.	Country Side Drive	WB	1	12	6	72	8
Lake Cook Rd.	Country Side Drive	WB	lt	6	50	300	33
Lake Cook Rd.	Country Side Drive	WB	2	12	6	72	8
Lake Cook Rd.	Country Side Drive	WB	lt	10	6	60	7
Lake Cook Rd.	Country Side Drive	WB	2	12	6	72	8
Lake Cook Rd.	Country Side Drive	WB	1	12	6	72	8
Lake Cook Rd.	Country Side Drive	WB	2	12	8	96	11
Lake Cook Rd.	Country Side Drive	WB	lt	12	6	72	8
Lake Cook Rd.	Country Side Drive	WB	lt	16	6	96	11
Lake Cook Rd.	Country Side Drive	WB	1	12	6	72	8
Lake Cook Rd.	Country Side Drive	WB	2	12	6	72	8
Lake Cook Rd.	Country Side Drive	WB	1	12	6	72	8
Lake Cook Rd.	Country Side Drive	WB	2	12	6	72	8
Lake Cook Rd.	Country Side Drive	WB	1	12	6	72	8
Lake Cook Rd.	Country Side Drive	WB	2	12	6	72	8
Lake Cook Rd.	Country Side Drive	WB	2	12	6	72	8
Lake Cook Rd.	Country Side Drive	WB	2	12	6	72	8
Country Side Drive	Lake Cook Rd.	EB	1	12	6	72	8
Country Side Drive	Lake Cook Rd.	EB	2	12	6	72	8
Country Side Drive	Lake Cook Rd.	EB	med	16	6	96	11
Country Side Drive	Lake Cook Rd.	EB	1	12	6	72	8
Country Side Drive	Lake Cook Rd.	EB	2	12	15	180	20
Country Side Drive	Lake Cook Rd.	EB	2	12	15	180	20
Country Side Drive	Lake Cook Rd.	EB	lt	15	6	90	10
Country Side Drive	Lake Cook Rd.	EB	rt	10	8	80	9
Country Side Drive	Lake Cook Rd.	EB	1	12	8	96	11
Country Side Drive	Lake Cook Rd.	EB	2	12	8	96	11
Country Side Drive	Lake Cook Rd.	EB	rt	12	6	72	8

ROUTE: IL 62 from East of IL 25 to Sandbloom Rd./Countryside Dr.

CROSS STREETS		DIRECTION (EB/WB) (NB/SB)	LANE NO. (1, 2, 3)	PAVEMENT PATCH WIDTH	PAVEMENT PATCH LENGTH	REPAIR AREA (SQ FT)	REPAIR AREA (SQ YD)
FROM	TO						
Country Side Drive	Lake Cook Rd.	EB	lt	12	6	72	8
Country Side Drive	Lake Cook Rd.	EB	2	12	10	120	13
Country Side Drive	Lake Cook Rd.	EB	lt	12	6	72	8
Country Side Drive	Lake Cook Rd.	EB	rt	12	6	72	8
Country Side Drive	Lake Cook Rd.	EB	rt	12	6	72	8
Country Side Drive	Lake Cook Rd.	EB	lt	12	6	72	8
Country Side Drive	Lake Cook Rd.	EB	2	12	6	72	8
Country Side Drive	Lake Cook Rd.	EB	rt	12	6	72	8
Country Side Drive	Lake Cook Rd.	EB	lt	12	6	72	8
Country Side Drive	Lake Cook Rd.	EB	2	12	6	72	8
Country Side Drive	Lake Cook Rd.	EB	2	12	10	120	13
Country Side Drive	Lake Cook Rd.	EB	2	12	58	696	77
Country Side Drive	Lake Cook Rd.	EB	rt	6	20	120	13
Country Side Drive	Lake Cook Rd.	EB	1	12	15	180	20
Country Side Drive	Lake Cook Rd.	EB	rt	10	6	60	7
Country Side Drive	Lake Cook Rd.	EB	1	12	6	72	8
Country Side Drive	Lake Cook Rd.	EB	2	12	10	120	13
Country Side Drive	Lake Cook Rd.	EB	1	12	8	96	11
Country Side Drive	Lake Cook Rd.	EB	2	12	8	96	11
Country Side Drive	Lake Cook Rd.	EB	1	12	6	72	8
Country Side Drive	Lake Cook Rd.	EB	2	12	6	72	8
Country Side Drive	Lake Cook Rd.	EB	1	12	6	72	8
Country Side Drive	Lake Cook Rd.	EB	2	12	6	72	8
Country Side Drive	Lake Cook Rd.	EB	2	12	6	72	8
Country Side Drive	Lake Cook Rd.	EB	2	12	6	72	8
Country Side Drive	Lake Cook Rd.	EB	1	12	7	84	9
Country Side Drive	Lake Cook Rd.	EB	2	12	7	84	9
Country Side Drive	Lake Cook Rd.	EB	1	14	6	84	9
Country Side Drive	Lake Cook Rd.	EB	2	12	18	216	24
Country Side Drive	Lake Cook Rd.	EB	lt	12	6	72	8
Country Side Drive	Lake Cook Rd.	EB	lt	12	6	72	8
Country Side Drive	Lake Cook Rd.	EB	2	12	6	72	8
Country Side Drive	Lake Cook Rd.	EB	2	12	6	72	8
Country Side Drive	Lake Cook Rd.	EB	2	12	30	360	40
Country Side Drive	Lake Cook Rd.	EB	1	12	8	96	11
Country Side Drive	Lake Cook Rd.	EB	2	12	8	96	11
Country Side Drive	Lake Cook Rd.	EB	1	12	6	72	8
Country Side Drive	Lake Cook Rd.	EB	2	12	6	72	8
Country Side Drive	Lake Cook Rd.	EB	1	12	6	72	8
Country Side Drive	Lake Cook Rd.	EB	2	12	6	72	8
Country Side Drive	Lake Cook Rd.	EB	2	12	30	360	40
Country Side Drive	Lake Cook Rd.	EB	2	12	6	72	8
Country Side Drive	Lake Cook Rd.	EB	2	12	6	72	8
Country Side Drive	Lake Cook Rd.	EB	2	16	8	128	14
Country Side Drive	Lake Cook Rd.	EB	2	12	6	72	8
Country Side Drive	Lake Cook Rd.	EB	1	12	30	360	40
Country Side Drive	Lake Cook Rd.	EB	2	12	20	240	27
Country Side Drive	Lake Cook Rd.	EB	1	12	6	72	8
Country Side Drive	Lake Cook Rd.	EB	2	12	6	72	8
Country Side Drive	Lake Cook Rd.	EB	2	12	6	72	8
Country Side Drive	Lake Cook Rd.	EB	1	12	6	72	8
Country Side Drive	Lake Cook Rd.	EB	2	12	6	72	8
Country Side Drive	Lake Cook Rd.	EB	1	12	6	72	8
Country Side Drive	Lake Cook Rd.	EB	2	12	6	72	8
Country Side Drive	Lake Cook Rd.	EB	2	12	6	72	8
Country Side Drive	Lake Cook Rd.	EB	lt	12	6	72	8
Country Side Drive	Lake Cook Rd.	EB	lt	12	10	120	13
Country Side Drive	Lake Cook Rd.	EB	1	12	10	120	13
Country Side Drive	Lake Cook Rd.	EB	2	12	10	120	13
Lake Cook Rd.	Rte 25	EB	2	12	6	72	8
Lake Cook Rd.	Rte 25	EB	2	12	6	72	8
Lake Cook Rd.	Rte 25	EB	2	12	6	72	8
Lake Cook Rd.	Rte 25	EB	1	12	10	120	13
Lake Cook Rd.	Rte 25	EB	lt	12	6	72	8

TOTALS: 1129 FT 1474 SY

FILE NAME =	USER NAME = wlgreendp	DESIGNED -	REVISED -	STATE OF ILLINOIS DEPARTMENT OF TRANSPORTATION	PATCHING SCHEDULE IL 62	F.A. RTE.	SECTION	COUNTY	TOTAL SHEETS	SHEET NO.
ct:\pwork\PWIDOT\WILGREENDP\0125047\design.dgn	DRAWN -	REVISED -	VAR.			2009-05BPPC-PP	KANE & DUP.	25	14	
PLOT SCALE = 100.0000 ' / IN.	CHECKED -	REVISED -	CONTRACT NO. 60H49							
PLOT DATE = 5/19/2009	DATE -	REVISED -	FED. ROAD DIST. NO. 1 ILLINOIS FED. AID PROJECT							
					SCALE:	SHEET NO. OF SHEETS STA.		TO STA.		

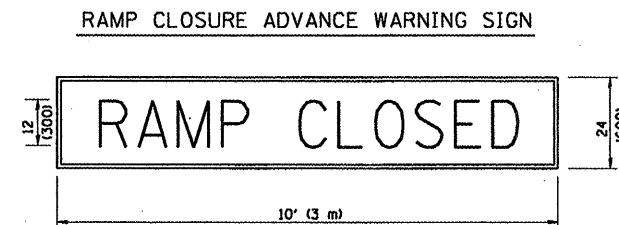
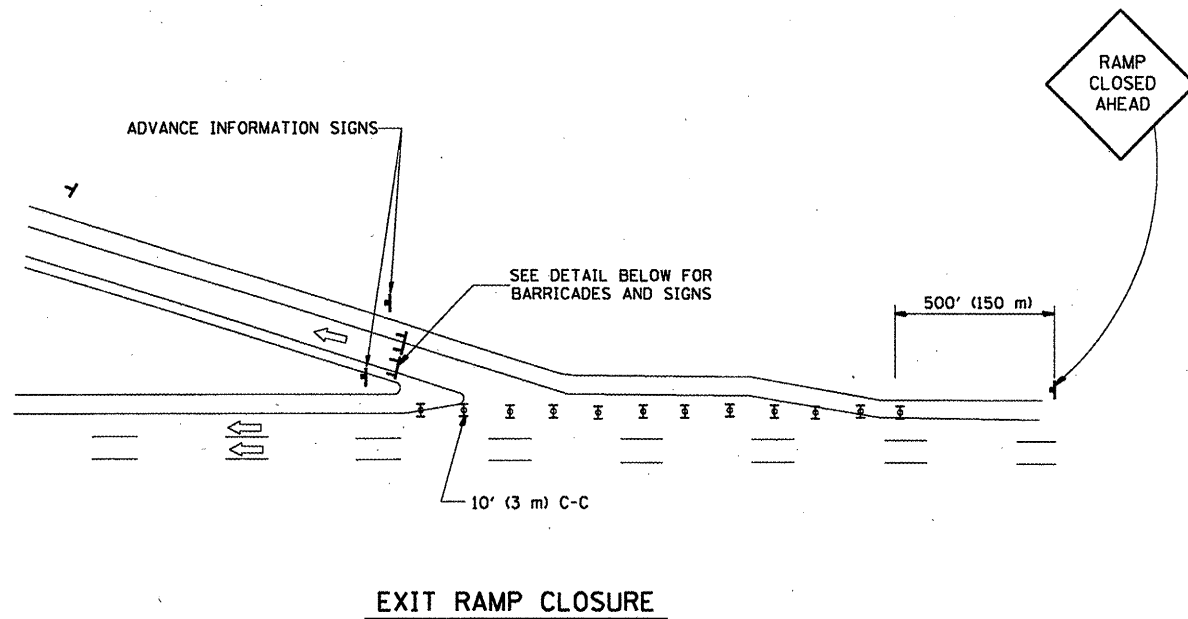
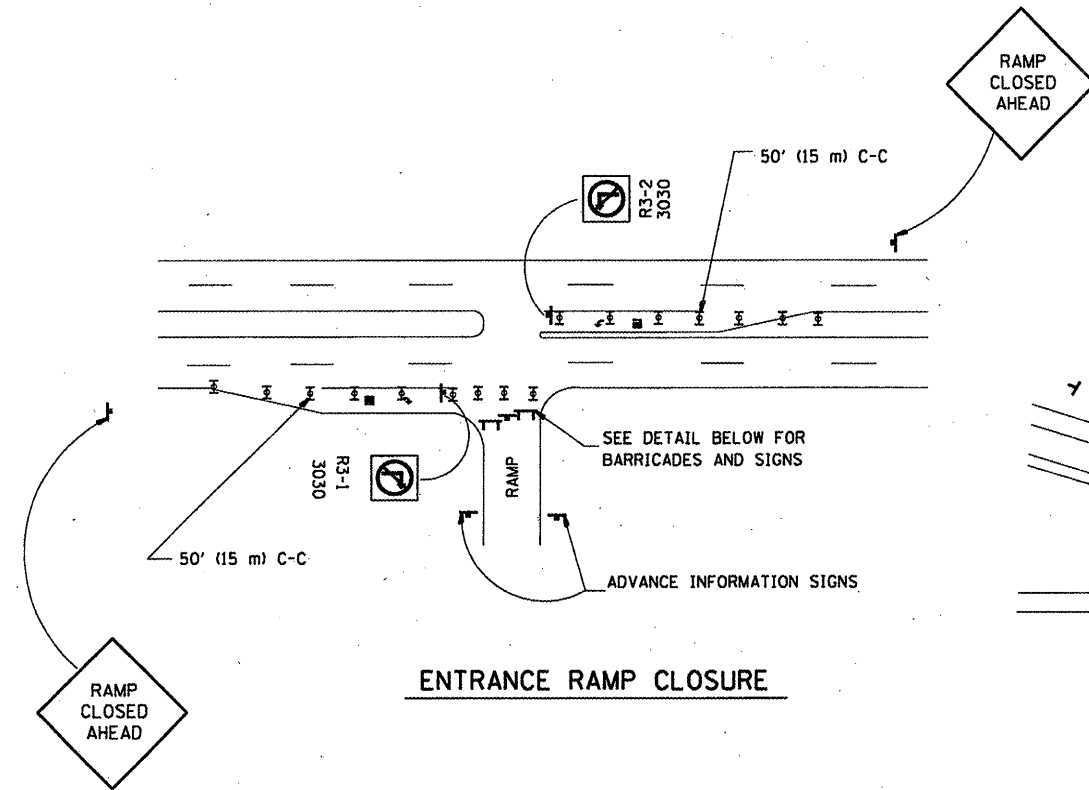
ROUTE: IL 64 from Kirk Road to Kautz Road

CROSS STREETS		DIRECTION (EB/WB) (NB/SB)	LANE NO. (1, 2, 3)	PAVEMENT PATCH WIDTH	PAVEMENT PATCH LENGTH	REPAIR AREA (SQ FT)	REPAIR AREA (SQ YD)
FROM	TO						
Kirk Rd.	38th Ave.	EB	1	12	4	48.0	5.3
Kirk Rd.	38th Ave.	EB	2	12	4	48.0	5.3
Kirk Rd.	38th Ave.	EB	1	12	4	48.0	5.3
Kirk Rd.	38th Ave.	EB	2	12	4	48.0	5.3
Kirk Rd.	38th Ave.	EB	2	12	4	48.0	5.3
Kirk Rd.	38th Ave.	EB	1	12	4	48.0	5.3
Kirk Rd.	38th Ave.	EB	2	12	4	48.0	5.3
Kirk Rd.	38th Ave.	EB	2	12	4	48.0	5.3
Kirk Rd.	38th Ave.	EB	1	12	4	48.0	5.3
Kirk Rd.	38th Ave.	EB	2	12	4	48.0	5.3
Kirk Rd.	38th Ave.	EB	1	12	4	48.0	5.3
Kirk Rd.	38th Ave.	EB	2	12	4	48.0	5.3
Kirk Rd.	38th Ave.	EB	2	12	4	48.0	5.3
Kirk Rd.	38th Ave.	EB	1	12	4	48.0	5.3
Kirk Rd.	38th Ave.	EB	2	12	4	48.0	5.3
38th Ave.	Kautz Rd.	EB	1	12	4	48.0	5.3
38th Ave.	Kautz Rd.	EB	2	12	4	48.0	5.3
38th Ave.	Kautz Rd.	EB	1	12	4	48.0	5.3
38th Ave.	Kautz Rd.	EB	2	12	4	48.0	5.3
38th Ave.	Kautz Rd.	EB	1	4	25	100.0	11.1
38th Ave.	Kautz Rd.	EB	1	12	4	48.0	5.3
38th Ave.	Kautz Rd.	EB	2	12	4	48.0	5.3
38th Ave.	Kautz Rd.	EB	1	12	4	48.0	5.3
38th Ave.	Kautz Rd.	EB	2	12	4	48.0	5.3
38th Ave.	Kautz Rd.	EB	1	12	4	48.0	5.3
38th Ave.	Kautz Rd.	EB	2	12	4	48.0	5.3
38th Ave.	Kautz Rd.	EB	1	12	4	48.0	5.3
38th Ave.	Kautz Rd.	EB	2	12	20	240.0	26.7
38th Ave.	Kautz Rd.	EB	1	12	4	48.0	5.3
38th Ave.	Kautz Rd.	EB	2	12	4	48.0	5.3
38th Ave.	Kautz Rd.	EB	1	12	4	48.0	5.3
38th Ave.	Kautz Rd.	EB	2	12	4	48.0	5.3
38th Ave.	Kautz Rd.	EB	1	12	4	48.0	5.3
38th Ave.	Kautz Rd.	EB	2	12	4	48.0	5.3
38th Ave.	Kautz Rd.	EB	1	12	4	48.0	5.3
38th Ave.	Kautz Rd.	EB	2	12	4	48.0	5.3
38th Ave.	Kautz Rd.	EB	1	12	5	60.0	6.7
38th Ave.	Kautz Rd.	EB	1	12	4	48.0	5.3
38th Ave.	Kautz Rd.	EB	2	12	4	48.0	5.3
38th Ave.	Kautz Rd.	EB	LT	12	4	48.0	5.3
38th Ave.	Kautz Rd.	EB	MED	12	4	48.0	5.3
38th Ave.	Kautz Rd.	EB	1	12	4	48.0	5.3
38th Ave.	Kautz Rd.	EB	2	12	4	48.0	5.3
Kautz Rd.	38th Ave.	WB	1	12	6	72.0	8.0
Kautz Rd.	38th Ave.	WB	2	12	6	72.0	8.0
Kautz Rd.	38th Ave.	WB	1	12	4	48.0	5.3
Kautz Rd.	38th Ave.	WB	2	12	4	48.0	5.3
Kautz Rd.	38th Ave.	WB	1	12	4	48.0	5.3
Kautz Rd.	38th Ave.	WB	2	12	4	48.0	5.3
Kautz Rd.	38th Ave.	WB	2	12	4	48.0	5.3
Kautz Rd.	38th Ave.	WB	1	12	4	48.0	5.3
Kautz Rd.	38th Ave.	WB	2	12	4	48.0	5.3
Kautz Rd.	38th Ave.	WB	2	12	4	48.0	5.3
Kautz Rd.	38th Ave.	WB	1	12	4	48.0	5.3
Kautz Rd.	38th Ave.	WB	2	12	4	48.0	5.3
Kautz Rd.	38th Ave.	WB	1	12	4	48.0	5.3
Kautz Rd.	38th Ave.	WB	2	12	4	48.0	5.3
Kautz Rd.	38th Ave.	WB	1	12	4	48.0	5.3
Kautz Rd.	38th Ave.	WB	2	12	4	48.0	5.3
Kautz Rd.	38th Ave.	WB	1	12	4	48.0	5.3

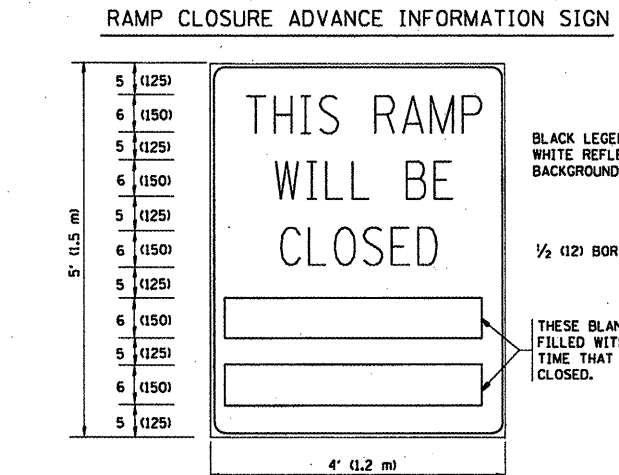
ROUTE: IL 64 from Kirk Road to Kautz Road

CROSS STREETS		DIRECTION (EB/WB) (NB/SB)	LANE NO. (1, 2, 3)	PAVEMENT PATCH WIDTH	PAVEMENT PATCH LENGTH	REPAIR AREA (SQ FT)	REPAIR AREA (SQ YD)
FROM	TO						
Kautz Rd.	38th Ave.	WB	2	12	4	48.0	5.3
Kautz Rd.	38th Ave.	WB	1	12	4	48.0	5.3
Kautz Rd.	38th Ave.	WB	1	12	4	48.0	5.3
Kautz Rd.	38th Ave.	WB	1	12	4	48.0	5.3
Kautz Rd.	38th Ave.	WB	1	12	4	48.0	5.3
Kautz Rd.	38th Ave.	WB	2	12	4	48.0	5.3
Kautz Rd.	38th Ave.	WB	LT	12	4	48.0	5.3
Kautz Rd.	38th Ave.	WB	1	12	4	48.0	5.3
Kautz Rd.	38th Ave.	WB	2	12	4	48.0	5.3
Kautz Rd.	38th Ave.	WB	RT	12	4	48.0	5.3
Kautz Rd.	38th Ave.	WB	LT	12	4	48.0	5.3
Kautz Rd.	38th Ave.	WB	1	12	4	48.0	5.3
Kautz Rd.	38th Ave.	WB	2	12	4	48.0	5.3
Kautz Rd.	38th Ave.	WB	LT	12	4	48.0	5.3
Kautz Rd.	38th Ave.	WB	1	12	4	48.0	5.3
Kautz Rd.	38th Ave.	WB	2	12	4	48.0	5.3
38th Ave.	Kirk Rd.	WB	1	12	4	48.0	5.3
38th Ave.	Kirk Rd.	WB	2	12	4	48.0	5.3
38th Ave.	Kirk Rd.	WB	1	12	4	48.0	5.3
38th Ave.	Kirk Rd.	WB	2	12	4	48.0	5.3
38th Ave.	Kirk Rd.	WB	1	12	4	48.0	5.3
38th Ave.	Kirk Rd.	WB	2	12	4	48.0	5.3
38th Ave.	Kirk Rd.	WB	2	8	6	48.0	5.3
38th Ave.	Kirk Rd.	WB	1	12	4	48.0	5.3
38th Ave.	Kirk Rd.	WB	2	12	4	48.0	5.3
38th Ave.	Kirk Rd.	WB	1	12	4	48.0	5.3
38th Ave.	Kirk Rd.	WB	2	12	4	48.0	5.3
38th Ave.	Kirk Rd.	WB	1	12	4	48.0	5.3
38th Ave.	Kirk Rd.	WB	2	12	4	48.0	5.3
38th Ave.	Kirk Rd.	WB	1	12	4	48.0	5.3
38th Ave.	Kirk Rd.	WB	2	12	4	48.0	5.3
38th Ave.	Kirk Rd.	WB	1	12	4	48.0	5.3
38th Ave.	Kirk Rd.	WB	2	12	4	48.0	5.3
38th Ave.	Kirk Rd.	WB	1	12	4	48.0	5.3
38th Ave.	Kirk Rd.	WB	2	12	4	48.0	5.3
38th Ave.	Kirk Rd.	WB	1	12	4	48.0	5.3
38th Ave.	Kirk Rd.	WB	2	12	4	48.0	5.3
38th Ave.	Kirk Rd.	WB	1	12	4	48.0	5.3
38th Ave.	Kirk Rd.	WB	2	12	4	48.0	5.3
38th Ave.	Kirk Rd.	WB	1	12	4	48.0	5.3
38th Ave.	Kirk Rd.	WB	2	12	4	48.0	5.3
38th Ave.	Kirk Rd.	WB	1	12	4	48.0	5.3
38th Ave.	Kirk Rd.	WB	2	12	4	48.0	5.3
38th Ave.	Kirk Rd.	WB	1	12	4	48.0	5.3
38th Ave.	Kirk Rd.	WB	2	12	4	48.0	5.3
38th Ave.	Kirk Rd.	WB	1	12	4	48.0	5.3
38th Ave.	Kirk Rd.	WB	2	9	6	54.0	6.0
38th Ave.	Kirk Rd.	WB	1	12	4	48.0	5.3
38th Ave.	Kirk Rd.	WB	2	12	4	48.0	5.3
38th Ave.	Kirk Rd.	WB	1	12	4	48.0	5.3
38th Ave.	Kirk Rd.	WB	2	12	4	48.0	5.3

TOTALS: 467 FT 596 SY



BLACK LEGEND ON ORANGE REFLECTORIZED BACKGROUND
 1 (25) BORDER
 THESE SIGNS ARE REQUIRED ON ALL THE EXIT GUIDE SIGNS FOR THE CLOSED EXIT RAMPS.

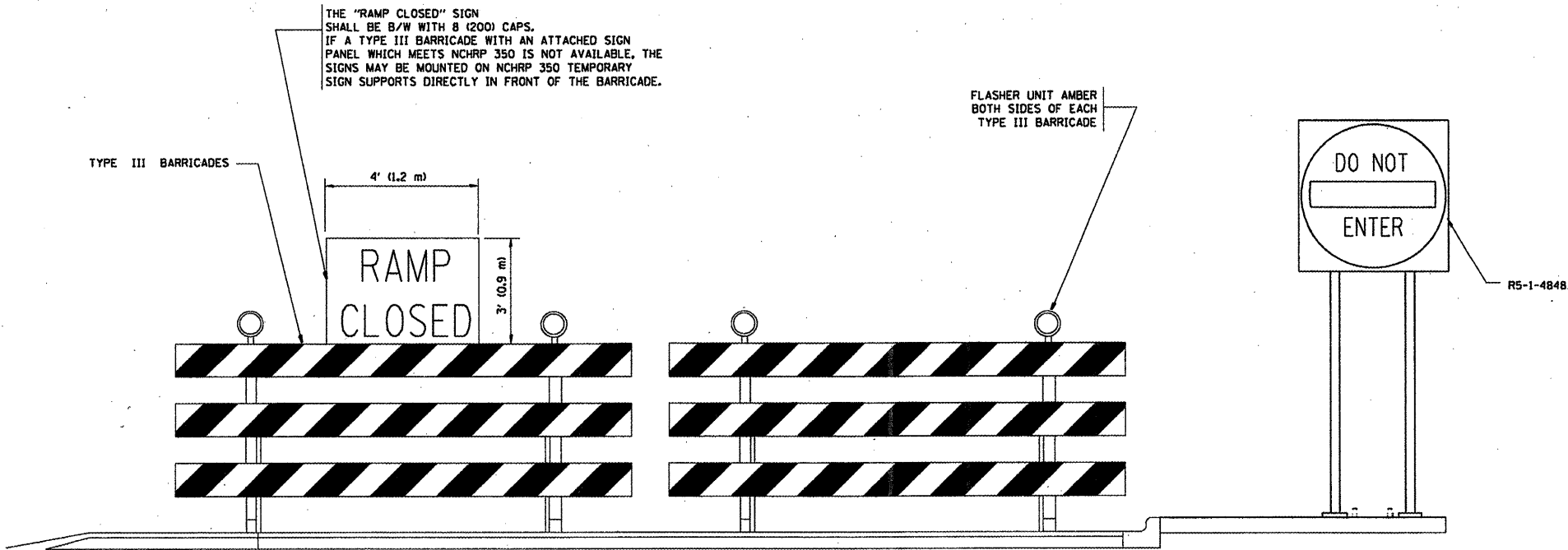


BLACK LEGEND ON WHITE REFLECTORIZED BACKGROUND
 1/2 (12) BORDER
 THESE BLANK AREAS SHALL BE FILLED WITH THE DATES AND THE TIME THAT THE RAMP WILL BE CLOSED.
 THESE SIGNS ARE REQUIRED ON BOTH SIDES OF THE RAMP, MINIMUM OF 1 WEEK IN ADVANCE OF THE CLOSURE.

GENERAL NOTES:

1. CONES MAY BE SUBSTITUTED FOR DRUMS OR TYPE II BARRICADES DURING DAY OPERATIONS. CONES SHALL BE A MINIMUM OF 28 (700) HIGH.
2. STEADY BURN LIGHTS WILL NOT BE REQUIRED FOR DAY OPERATIONS.
3. A FLAGGER SHALL BE POSITIONED AT EACH CLOSED RAMP THAT IS OPEN TO CONSTRUCTION VEHICLES.
4. ALL ROUTE MARKERS AND TRAILBLAZER ASSEMBLIES WHICH DIRECT MOTORISTS TO A CLOSED ENTRANCE RAMP SHALL BE COVERED.
5. THE SIGNING AND BARRICADING WHICH IS REQUIRED BY THIS DETAIL SHALL BE INCLUDED IN THE COST OF TRAFFIC CONTROL AND PROTECTION (EXPRESSWAYS).
6. AUTHORIZATION FROM THE DISTRICT'S BUREAU OF TRAFFIC IS REQUIRED FOR ALL RAMP CLOSURES.
7. THE RAMP CLOSURE ADVANCE INFORMATION SIGNS SHALL BE ERECTED IF THE CLOSURE TIME EXCEEDS TWENTY-FOUR (24) HOURS. ADDITIONAL ADVANCE WARNING SIGNS ON EXIT GUIDE SIGNING WILL BE REQUIRED FOR EXIT RAMP CLOSURES THAT EXCEED TWENTY FOUR (24) HOURS IN LENGTH.

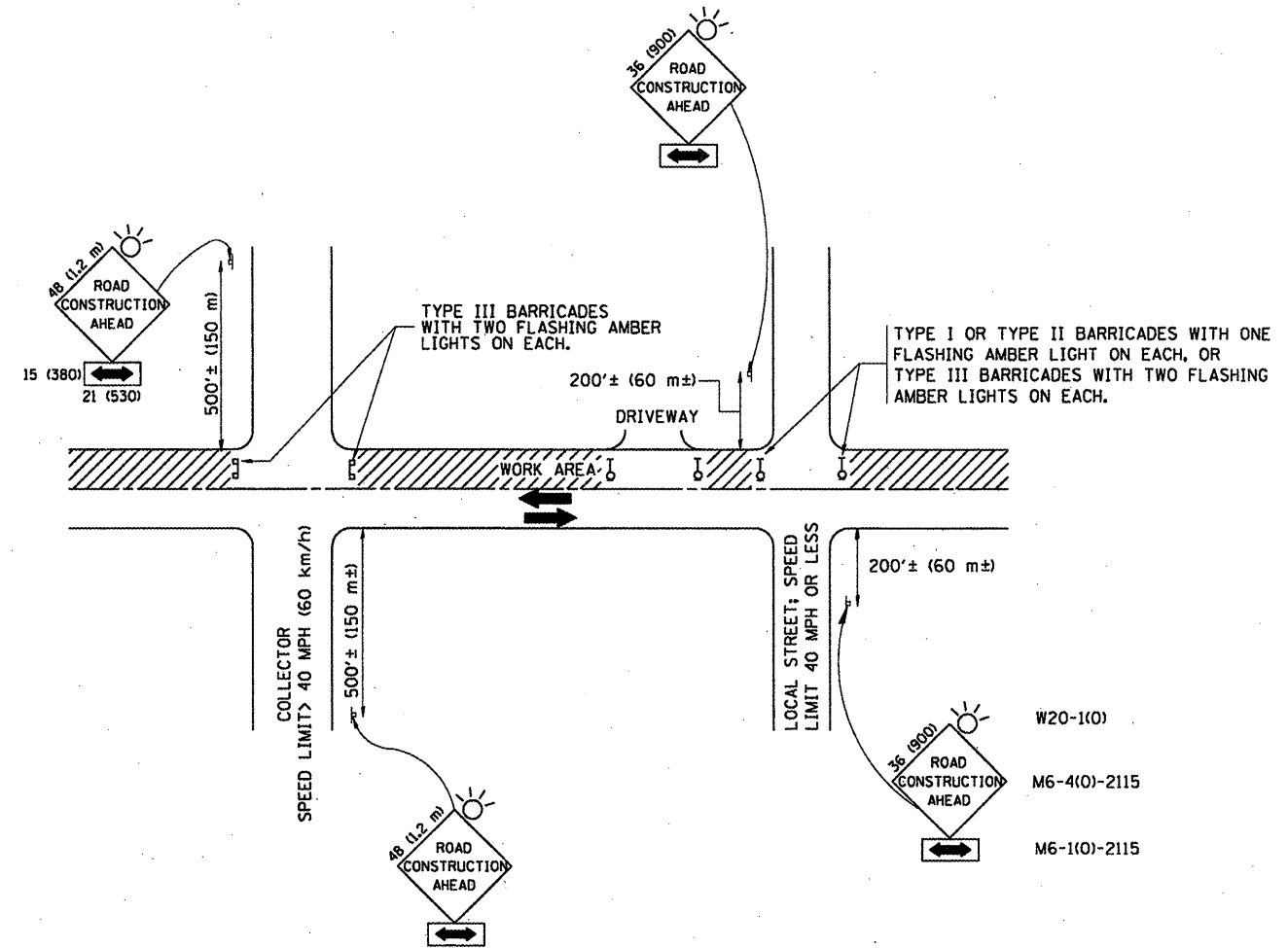
ALL DIMENSIONS ARE IN INCHES (MILLIMETERS) UNLESS OTHERWISE SHOWN.



SYMBOLS

- ▬ TYPE II BARRICADE, DRUM OR VERTICAL BARRICADE WITH STEADY BURN MONO-DIRECTIONAL LIGHT
- ⊣ TYPE III BARRICADE WITH FLASHING LIGHT

FILE NAME =	USER NAME = wilgreendp	DESIGNED - DWS	REVISED - DWS 12-94	STATE OF ILLINOIS DEPARTMENT OF TRANSPORTATION	FREEWAY ENTRANCE AND EXIST RAMP CLOSURE DETAILS			F.A. RTE.	SECTION	COUNTY	TOTAL SHEET NO.
or \pwwork\VPWIDOT\WILGREENDP\00125047\st5td.dgn		DRAWN -	REVISED - DWS/JAF 12-02		SCALE: NONE	SHEET NO. 1 OF 1 SHEETS	STA.	TO STA.	VAR 2009-058Pcc-PP	Kane	25
		CHECKED -	REVISED - JAF 02-06						TC-08		16
		DATE - 02-83	REVISED - SPB 01-07								CONTRACT NO. 60H49
								FED. ROAD DIST. NO. 1 ILLINOIS FED. AID PROJECT			



TRAFFIC CONTROL AND PROTECTION FOR SIDE ROADS, INTERSECTIONS, AND DRIVEWAYS

NOTES:

A. FOR NO LANE RESTRICTION ON THE SIDE ROAD OR DRIVEWAYS

1. SIDE ROAD WITH A SPEED LIMIT OF 40 MPH (60 km/h) OR LESS AS SHOWN ON THE DRAWING AND AS DIRECTED BY THE ENGINEER:

a) ONE **ROAD CONSTRUCTION AHEAD** SIGN 36 x 36 (900x900) WITH A FLASHER AND FLAG MOUNTED ON IT APPROXIMATELY 200' (60 m) IN ADVANCE OF THE MAIN ROUTE.

b) THE CLOSED PORTION OF THE MAIN ROUTE SHALL BE PROTECTED BY BLOCKING WITH TYPE I, TYPE II OR TYPE III BARRICADES, 1/3 OF THE CROSS SECTION OF THE CLOSED PORTION.

2. SIDE ROAD WITH A SPEED LIMIT GREATER THAN 40 MPH (60 km/h) AS SHOWN ON THE DRAWING AND AS DIRECTED BY THE ENGINEER:

a) ONE **ROAD CONSTRUCTION AHEAD** SIGN 48 x 48 (1.2 m x 1.2 m) WITH A FLASHER MOUNTED ON IT APPROXIMATELY 500' (150 m) IN ADVANCE OF THE MAIN ROUTE.

b) THE CLOSED PORTION OF THE MAIN ROUTE SHALL BE PROTECTED BY BLOCKING WITH TYPE III BARRICADES, 1/2 OF THE CROSS SECTION OF THE CLOSED PORTION.

3. WHEN THE SIDE ROAD LIES BETWEEN THE BEGINNING OF THE MAINLINE SIGNING AND THE WORK ZONE, A SINGLE HEADED ARROW (M6-1) SHALL BE USED IN LIEU OF THE DOUBLE HEADED ARROW (M6-4).

B. FOR A LANE CLOSURE ON A SIDE ROAD OR DRIVEWAY:

USE APPLICABLE PORTIONS OF THE TYPICAL APPLICATION OF TRAFFIC CONTROL DEVICES (STD. 701501, STD. 701606 OR THE APPROPRIATE STANDARD). THE SPACING OF SIGNS AND BARRICADES SHALL BE ADJUSTED FOR FIELD CONDITIONS AS DIRECTED BY THE ENGINEER. THE DIRECTIONAL ARROW SHALL BE COVERED OR REMOVED WHEN NO LONGER CONSISTENT WITH THE SIDE ROAD LANE CLOSURE.

C. ADVANCE WARNING SIGNS ARE TO BE OMITTED ON DRIVEWAY UNLESS OTHERWISE NOTED.

D. THE TRAFFIC CONTROL AND PROTECTION FOR SIDE ROADS, INTERSECTIONS, AND DRIVEWAYS SHALL BE INCIDENTAL TO THE COST OF SPECIFIED TRAFFIC CONTROL STANDARDS OR ITEMS.

All dimensions are in millimeters (inches) unless otherwise shown.

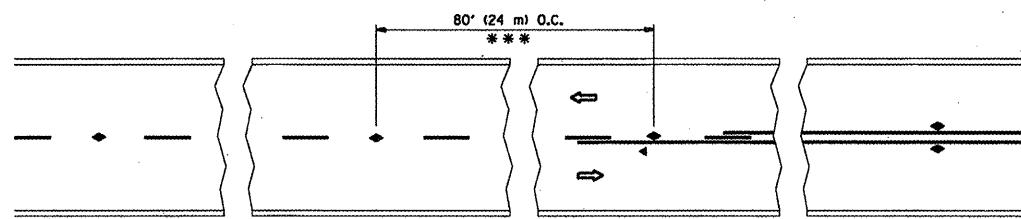
FILE NAME =	USER NAME = wilgreendp	DESIGNED - LHA	REVISED - J. OBERLE 10-18-95
cr:\pwwork\WIDOT\WILGREENDP\d0125047\d0125047.dgn	DRAWN -	REVISOR - A. HOUSEH 03-06-96	REVISOR - A. HOUSEH 10-15-96
PLOT SCALE = 100.0000' / IN.	CHECKED -	REVISOR - T. RAMMACHER 01-06-00	
PLOT DATE = 5/18/2009	DATE = 06-89		

**STATE OF ILLINOIS
DEPARTMENT OF TRANSPORTATION**

**TRAFFIC CONTROL AND PROTECTION FOR
SIDE ROADS, INTERSECTIONS, AND DRIVEWAYS**

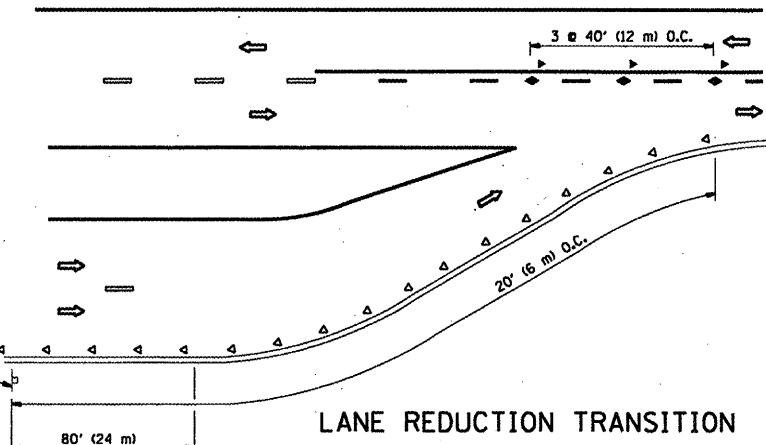
SCALE: NONE SHEET NO. 1 OF 1 SHEETS STA. TO STA.

F.A. RTE.	SECTION	COUNTY	TOTAL SHEETS	SHEET NO.
VAR. 2009-05B PC - PP	Kane + DR	TC-10	25	17
FED. ROAD DIST. NO. 1 ILLINOIS FED. AID PROJECT			CONTRACT NO. 60H49	

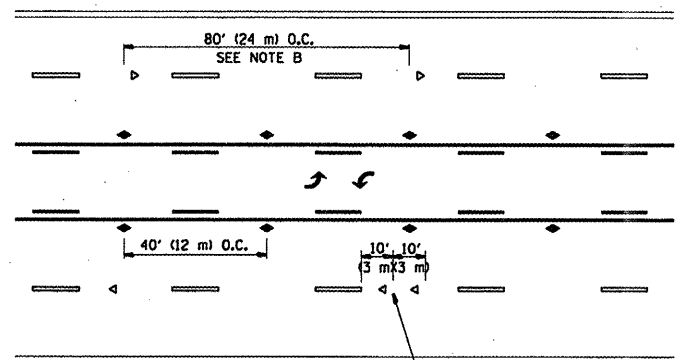


*** REDUCE TO 40' (12 m) O.C. ON CURVES WITH POSTED OR ADVISORY SPEED 45 M.P.H. (70 km/h) OR LESS.

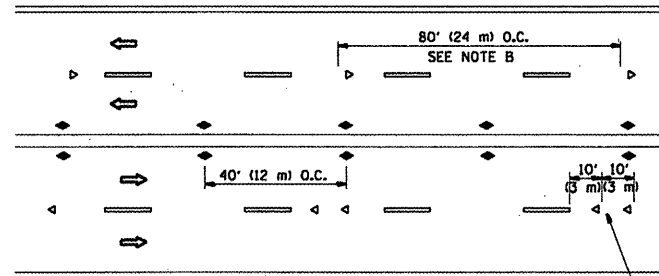
TWO-LANE/TWO-WAY



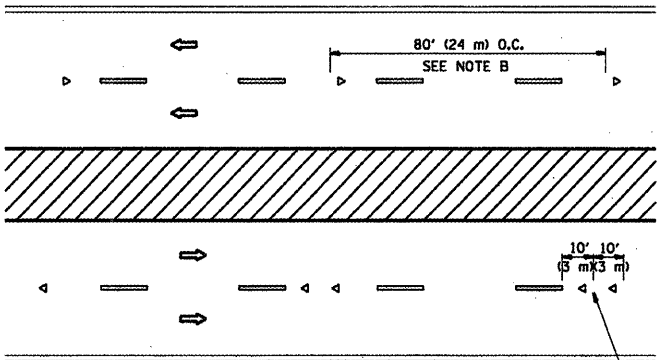
LANE REDUCTION TRANSITION



TWO-WAY LEFT TURN



MULTI-LANE/UNDIVIDED



MULTI-LANE/DIVIDED

GENERAL NOTES

1. MARKERS USED WITH DASHED LINES SHALL BE CENTERED IN THE GAP BETWEEN SEGMENTS.
2. MARKERS USED ADJACENT TO SOLID LINES SHALL BE OFFSET 2 TO 3 (50 TO 75) TOWARD TRAFFIC AS SHOWN.
3. MARKERS THROUGH TANGENTS LESS THAN 500' (150 m) IN LENGTH BETWEEN CURVES SHALL BE INSTALLED AT THE LESSER OF THE TWO CURVE SPACINGS.

SYMBOLS

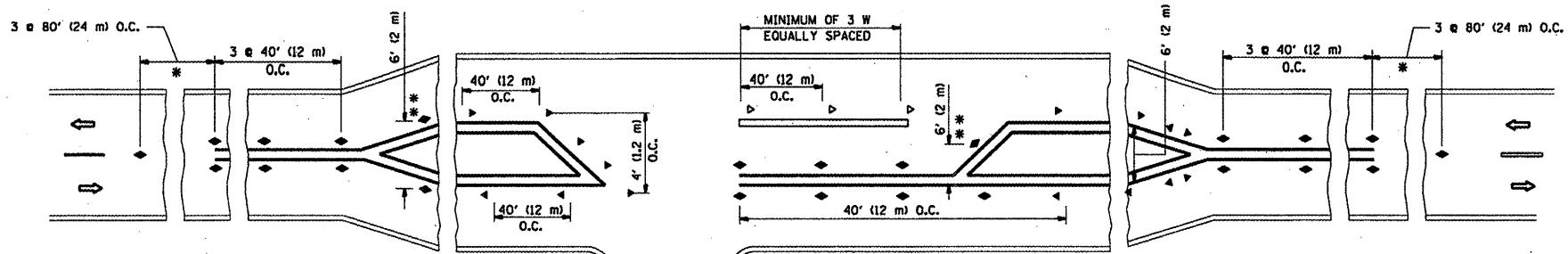
- YELLOW STRIPE
- WHITE STRIPE
- ◀ ONE-WAY AMBER MARKER
- ◀ ONE-WAY CRYSTAL MARKER (W/O)
- ◆ TWO-WAY AMBER MARKER

LANE MARKER NOTES

- B. REDUCE TO 40' (12 m) O.C. ON CURVES WHERE ADVISORY SPEEDS ARE 10 M.P.H. (20 km/h) LOWER THAN POSTED SPEEDS.
- A. USE DOUBLE LANE LINE MARKERS SPACED AS SHOWN.

DESIGN NOTES

1. DOUBLE LANE LINE MARKERS SHALL BE USED UNLESS SPECIFIED OTHERWISE.
2. EXCEPT AS SHOWN ON THE LANE REDUCTION TRANSITION AND FREEWAY EXIT RAMP DETAIL, MARKERS ARE NOT TO BE SPECIFIED ON RIGHT EDGE LINES.
3. THE EXACT MARKER LIMITS, SPACING, AND COLOR SHOULD BE INCLUDED IN THE PLANS.
4. MARKERS SHOULD NOT BE USED ALONGSIDE CURBS EXCEPT FOR EXTREMELY SHORT SECTIONS OF CURBS WHERE NOT MORE THAN TWO MARKERS WOULD BE INVOLVED.



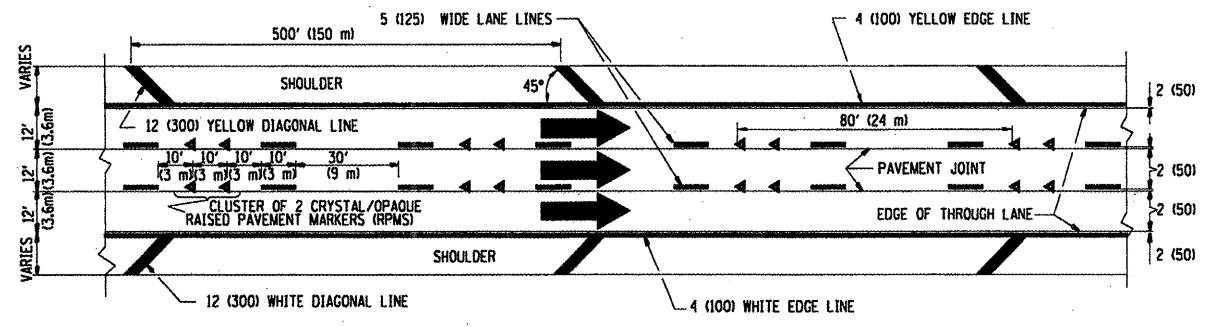
LEFT TURN

* SEE TWO-LANE/TWO-WAY WHERE MARKERS CONTINUE
 ** WHERE THE MEDIAN WIDTH IS 6' (2 m) OR LESS USE TWO-WAY MARKERS.

All dimensions are in inches (millimeters) unless otherwise shown.

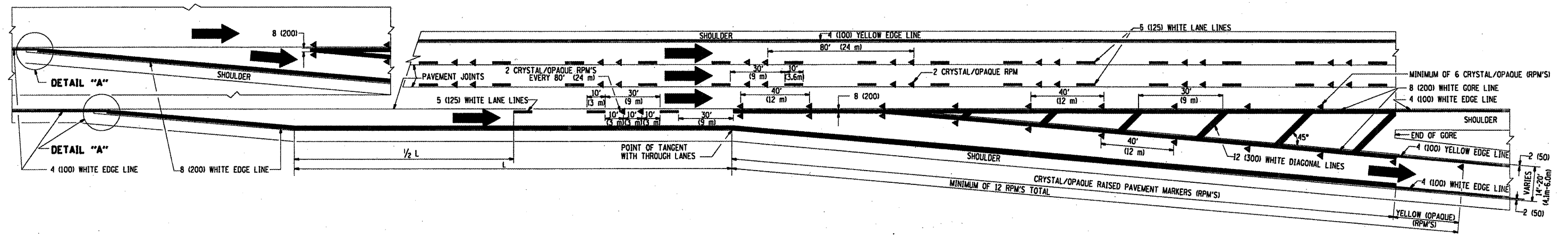
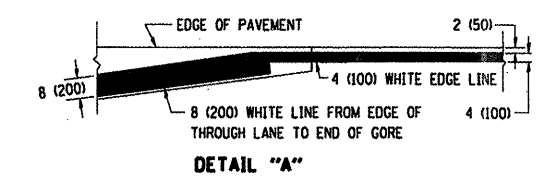
FILE NAME =	USER NAME = wilgreendp	DESIGNED -	REVISED - T. RAMMACHER 09-19-94	STATE OF ILLINOIS DEPARTMENT OF TRANSPORTATION	TYPICAL APPLICATIONS			F.A. RTE.	SECTION	COUNTY	TOTAL SHEETS	SHEET NO.	
cr:\pwwork\PWIDOT\WILGREENDP\0125047\01stStd.dgn		DRAWN -	REVISED - T. RAMMACHER 03-12-99		RAISED REFLECTIVE PAVEMENT MARKERS (SNOW-PLOW RESISTANT)			VAR.	2009-05B PCC-PP	Kane + DuP	25	18	
PLOT SCALE = 100.0000 / IN.		CHECKED -	REVISED - T. RAMMACHER 01-06-00		SCALE: NONE	SHEET NO. 1	OF 1	SHEETS	STA.	TO STA.	TC-11		CONTRACT NO. 60449
PLOT DATE = 5/18/2009		DATE -	REVISED -		FED. ROAD DIST. NO. 1 ILLINOIS FED. AID PROJECT								

THE DIAGONAL LINES SHALL BE SPACED AT 40' (12 m) C-C ACROSS ALL STRUCTURES WHICH ARE 500' (150 m) OR LESS IN LENGTH
 THE DIAGONAL LINES ARE NOT REQUIRED ON SHOULDERS WHICH ARE 6' (1.8 m) OR LESS IN WIDTH

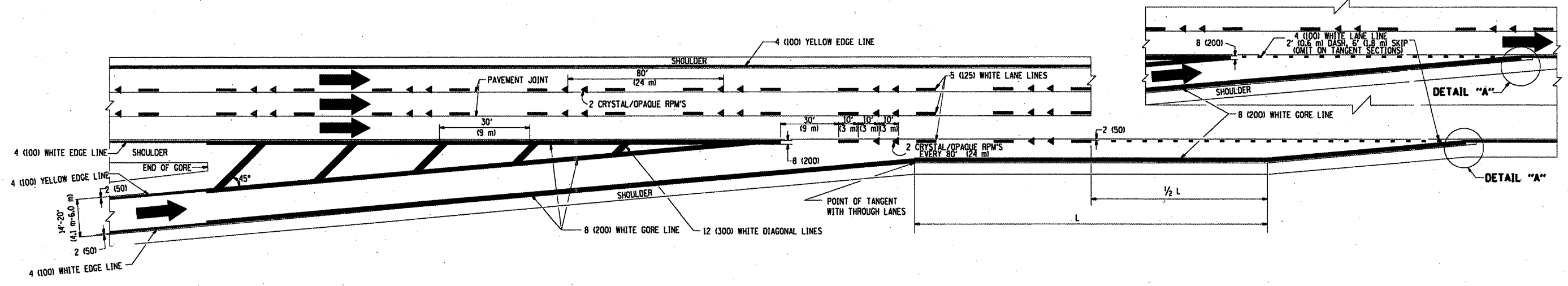


TYPICAL EDGE LINES & LANE LINES

- NOTES:**
1. THERMO PLASTIC PAVEMENT MARKING LINE SHALL BE USED FOR THE EDGE LINES, GORE LINES, AND DIAGONAL LINES ON BITUMINOUS PAVEMENT ONLY.
 2. PREFORMED PLASTIC TYPE B PAVEMENT MARKING LINE SHALL BE USED FOR ALL LANE LINES ON BITUMINOUS PAVEMENT
 3. POLYUREA PAVEMENT MARKING SHALL BE USED FOR ALL MARKINGS ON PCC

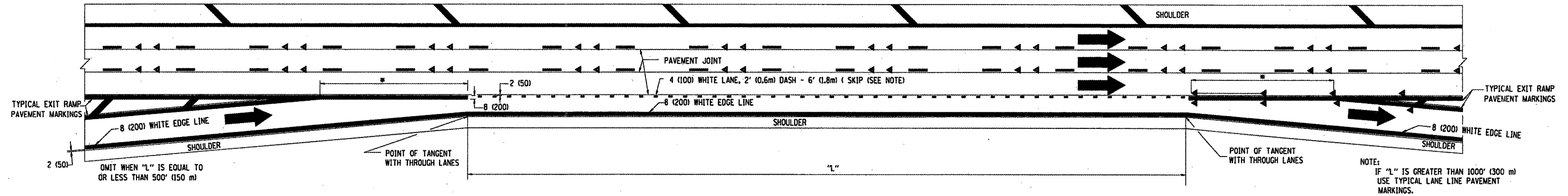


TYPICAL EXIT RAMP PAVEMENT MARKINGS

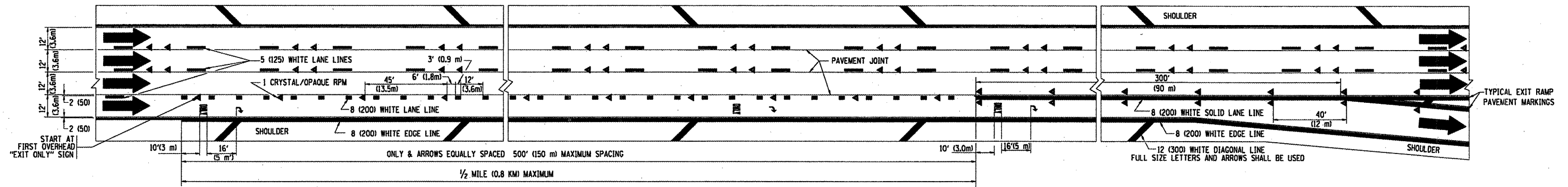


TYPICAL ENTRANCE RAMP PAVEMENT MARKINGS

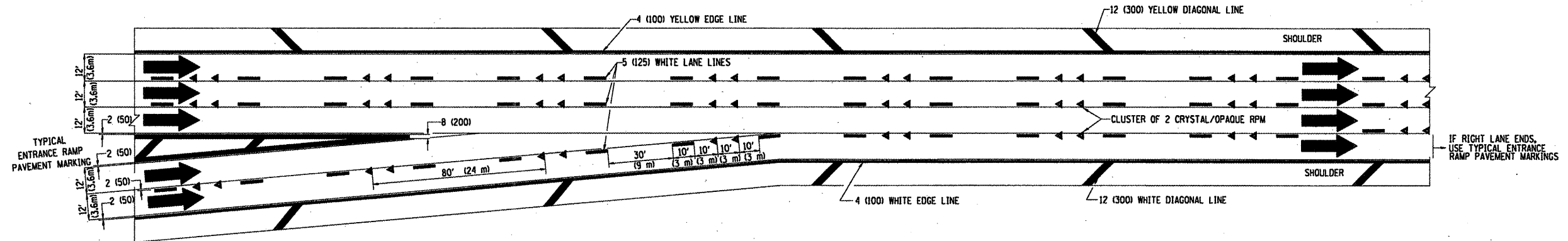
FILE NAME : c:\pwwork\pwidot\WILGREEND\0125047\0125047.dgn	USER NAME = wilgreendp	DESIGNED - D.W.S.	REVISED - A.H. 03-96	STATE OF ILLINOIS DEPARTMENT OF TRANSPORTATION	MULTI-LANE FREEWAY PAVEMENT MARKING DETAILS			F.A. RTE. VAR. 2009-058PCC-PP	SECTION TC-12	COUNTY KANE + DIA	TOTAL SHEETS 25	SHEET NO. 19
PLOT SCALE = 100.0000 "/ IN.	CHECKED -	REVISIED - D.W.S. 07-96	REVISIED - J.A.F. 02-06		SCALE: NONE	SHEET NO. 1 OF 2 SHEETS	STA.	TO STA.	FED. ROAD DIST. NO. 1	ILLINOIS FED. AID PROJECT	CONTRACT NO. 60H49	
PLOT DATE = 5/18/2009	DATE - 01-90	REVISIED - S.P.B. 01-07										



TYPICAL ENTRANCE/EXIT RAMP COMBINATION PAVEMENT MARKINGS

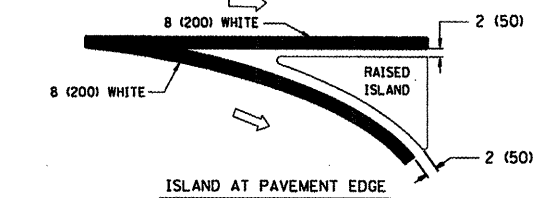
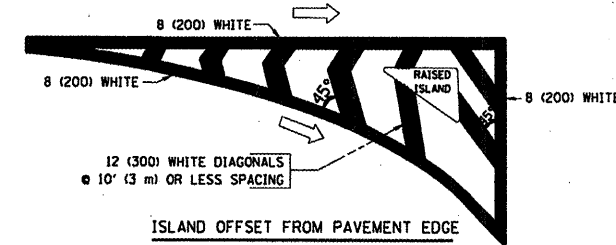
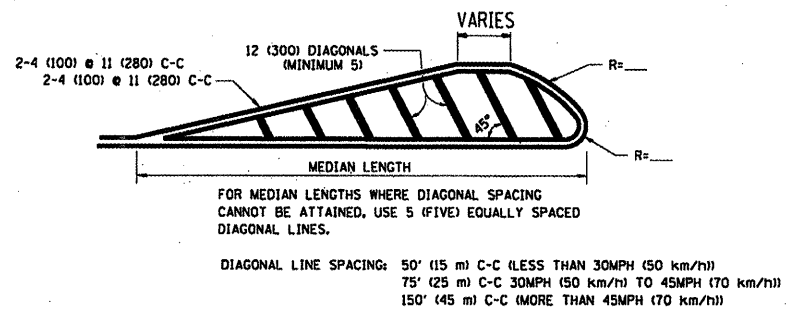
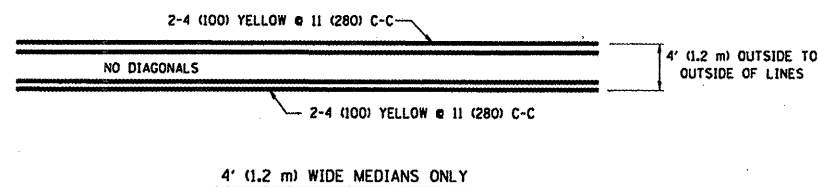
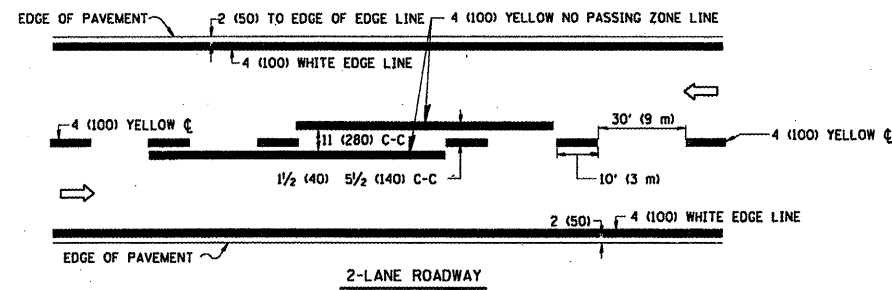


TYPICAL EXIT ONLY LANE PAVEMENT MARKINGS

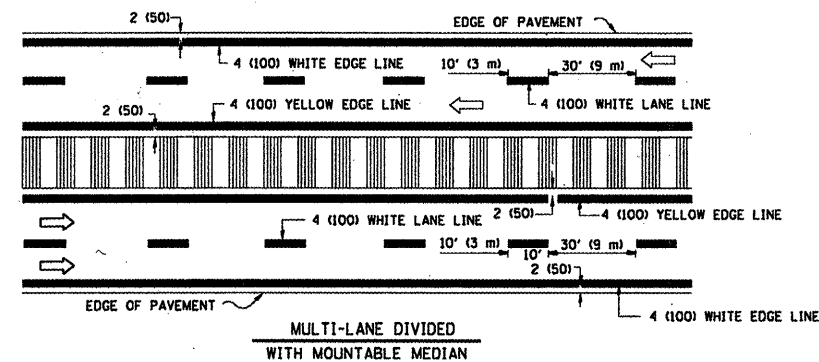
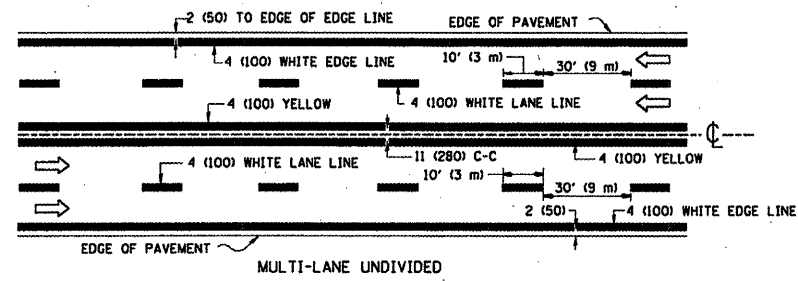


TYPICAL TWO LANE ENTRANCE RAMP PAVEMENT MARKINGS

FILE NAME =	USER NAME = wjlgreendp	DESIGNED - D.W.S.	REVISED - A.H. 03-96	STATE OF ILLINOIS DEPARTMENT OF TRANSPORTATION	MULTI-LANE FREEWAY PAVEMENT MARKING DETAILS		F.A. RTE.	SECTION	COUNTY	TOTAL SHEETS	SHEET NO.	
at:\pwork\PWIDOT\WJLGREENDP\0125047\0125047.dgn	PLLOT SCALE = 1/8" = 1' / IN.	DRAWN -	REVISED - D.W.S. 07-96		SCALE: NONE	SHEET NO. 2 OF 2 SHEETS	STA.	TO STA.	VAR. 2009-05BPC-PP	Kane	10/25/20	20
	PLLOT DATE = 5/18/2009	CHECKED -	REVISED - J.A.F. 02-06						TC-12			
		DATE - 01-90	REVISED - S.P.B. 01-07						FED. ROAD DIST. NO. 1	ILLINOIS FED. AID PROJECT		CONTRACT NO. 601499

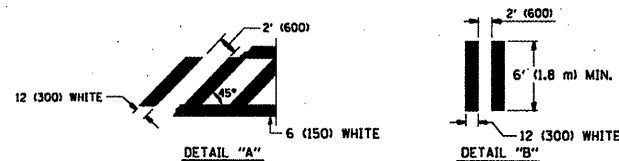
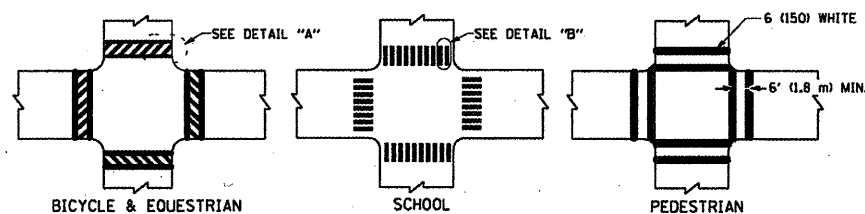


TYPICAL ISLAND MARKING

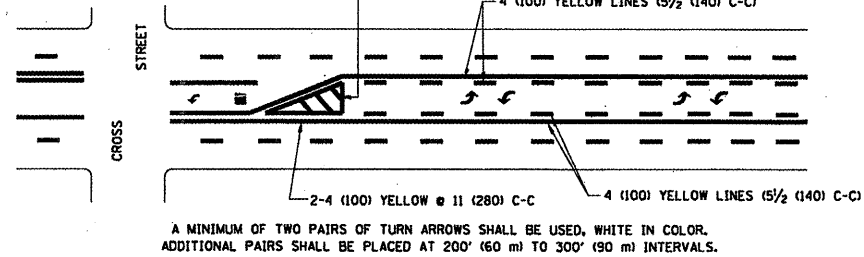


NOTE: MEDIANS WITH BARRIER CURB DO NOT REQUIRE AN EDGE LINE

TYPICAL LANE AND EDGE LINE MARKING

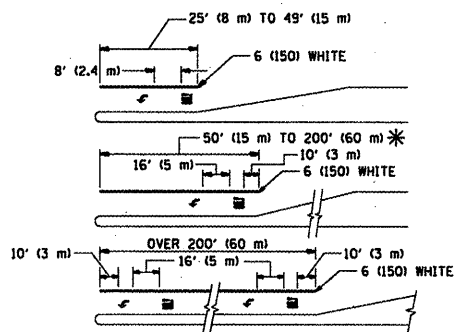


TYPICAL CROSSWALK MARKING



TYPICAL PAINTED MEDIAN MARKING

MEDIAN WITH TWO-WAY LEFT TURN LANE



FULL SIZE LETTERS 8' (2.4 m) AND ARROWS SHALL BE USED.
AREA = 15.6 SQ. FT. (1.5 m²) ONLY AREA = 20.8 SQ. FT. (1.9 m²)

* TURN LANES IN EXCESS OF 400' (120 m) IN LENGTH MAY HAVE AN ADDITIONAL SET OF ARROW - "ONLY" INSTALLED MIDWAY BETWEEN THE OTHER TWO SETS OF ARROW - "ONLY".

TYPICAL LEFT (OR RIGHT) TURN LANE

TYPICAL TURN LANE MARKING

TYPE OF MARKING	WIDTH OF LINE	PATTERN	COLOR	SPACING / REMARKS
CENTERLINE ON 2 LANE PAVEMENT	4 (100)	SKIP-DASH	YELLOW	10' (3 m) LINE WITH 30' (9 m) SPACE
CENTERLINE ON MULTI-LANE UNDIVIDED PAVEMENT	2 @ 4 (100)	SOLID	YELLOW	11 (280) C-C
NO PASSING ZONE LINES: FOR ONE DIRECTION FOR BOTH DIRECTIONS	4 (100) 2 @ 4 (100)	SOLID SOLID	YELLOW YELLOW	5/2 (140) C-C FROM SKIP-DASH CENTERLINE 11 (280) C-C OMIT SKIP-DASH CENTERLINE BETWEEN
LANE LINES	4 (100) 5 (125) ON FREEWAYS	SKIP-DASH SKIP-DASH	WHITE WHITE	10' (3 m) LINE WITH 30' (9 m) SPACE
DOTTED LINES (EXTENSIONS OF CENTER, LANE OR TURN LANE MARKINGS)	SAME AS LINE BEING EXTENDED	SKIP-DASH	SAME AS LINE BEING EXTENDED	2' (600) LINE WITH 6' (1.8 m) SPACE
EDGE LINES	4 (100)	SOLID	YELLOW-LEFT WHITE-RIGHT	OUTLINE MOUNTABLE MEDIANS IN YELLOW; EDGE LINES ARE NOT USED NEXT TO BARRIER CURB
TURN LANE MARKINGS	6 (150) LINE; FULL SIZE LETTERS & SYMBOLS 8' (2.4 m)	SOLID	WHITE	SEE TYPICAL TURN LANE MARKING DETAIL
TWO WAY LEFT TURN MARKING	2 @ 4 (100) EACH DIRECTION 8' (2.4 m) LEFT ARROW	SKIP-DASH AND SOLID IN PAIRS	YELLOW WHITE	10' (3 m) LINE WITH 30' (9 m) SPACE FOR SKIP-DASH; 5/2 (140) C-C BETWEEN SOLID LINE AND SKIP-DASH LINE SEE TYPICAL TWO-WAY LEFT TURN MARKING DETAIL
CROSSWALK LINES (PEDESTRIAN) A. DIAGONALS (BIKE & EQUESTRIAN) B. LONGITUDINAL BARS (SCHOOL)	2 @ 6 (150) 12 (300) @ 45° 12 (300) @ 90°	SOLID SOLID SOLID	WHITE WHITE WHITE	NOT LESS THAN 6' (1.8 m) APART 2' (600) APART SEE TYPICAL CROSSWALK MARKING DETAILS.
STOP LINES	24 (600)	SOLID	WHITE	PLACE 4' (1.2 m) IN ADVANCE OF AND PARALLEL TO CROSSWALK, IF PRESENT. OTHERWISE, PLACE AT DESIRED STOPPING POINT, PARALLEL TO CROSSROAD CENTERLINE, WHERE POSSIBLE
PAINTED MEDIANS	2 @ 4 (100) WITH 12 (300) DIAGONALS @ 45° NO DIAGONALS USED FOR 4' (1.2 m) WIDE MEDIANS	SOLID	YELLOW; TWO WAY TRAFFIC WHITE; ONE WAY TRAFFIC	11 (280) C-C FOR THE DOUBLE LINE SEE TYPICAL PAINTED MEDIAN MARKING.
CORE MARKING AND CHANNELIZING LINES	8 (200) WITH 12 (300) DIAGONALS @ 45°	SOLID	WHITE	DIAGONALS: 15' (4.5 m) C-C (LESS THAN 30MPH (50 km/h)) 20' (6 m) C-C 30MPH (50 km/h) TO 45MPH (70 km/h) 30' (9 m) C-C (OVER 45MPH (70 km/h))
RAILROAD CROSSING	24 (600) TRANSVERSE LINES; "RR" IS 6' (1.8 m) LETTERS; 16 (400) LINE FOR "X"	SOLID	WHITE	SEE STATE STANDARD 780001 AREA OF: "R"=3.6 SQ. FT. (0.33 m ²) EACH "X"=54.0 SQ. FT. (5.0 m ²)
SHOULDER DIAGONALS	12 (300) @ 45°	SOLID	WHITE - RIGHT YELLOW - LEFT	50' (15 m) C-C (LESS THAN 30MPH (50 km/h)) 75' (25 m) C-C 30 MPH (50 km/h) TO 45MPH (70 km/h) 150' (45 m) C-C (OVER 45MPH (70 km/h))

FOR FURTHER DETAILS ON PAVEMENT MARKING REFER TO STANDARD SPECIFICATIONS FOR ROAD AND BRIDGE CONSTRUCTION AND STATE STANDARD 780001.

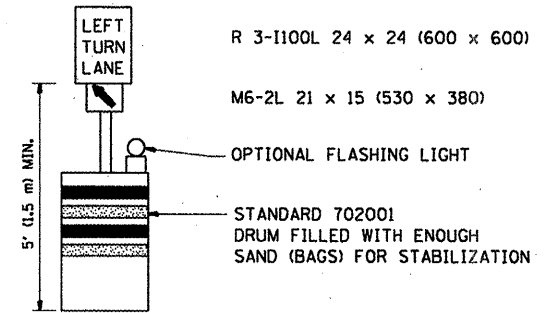
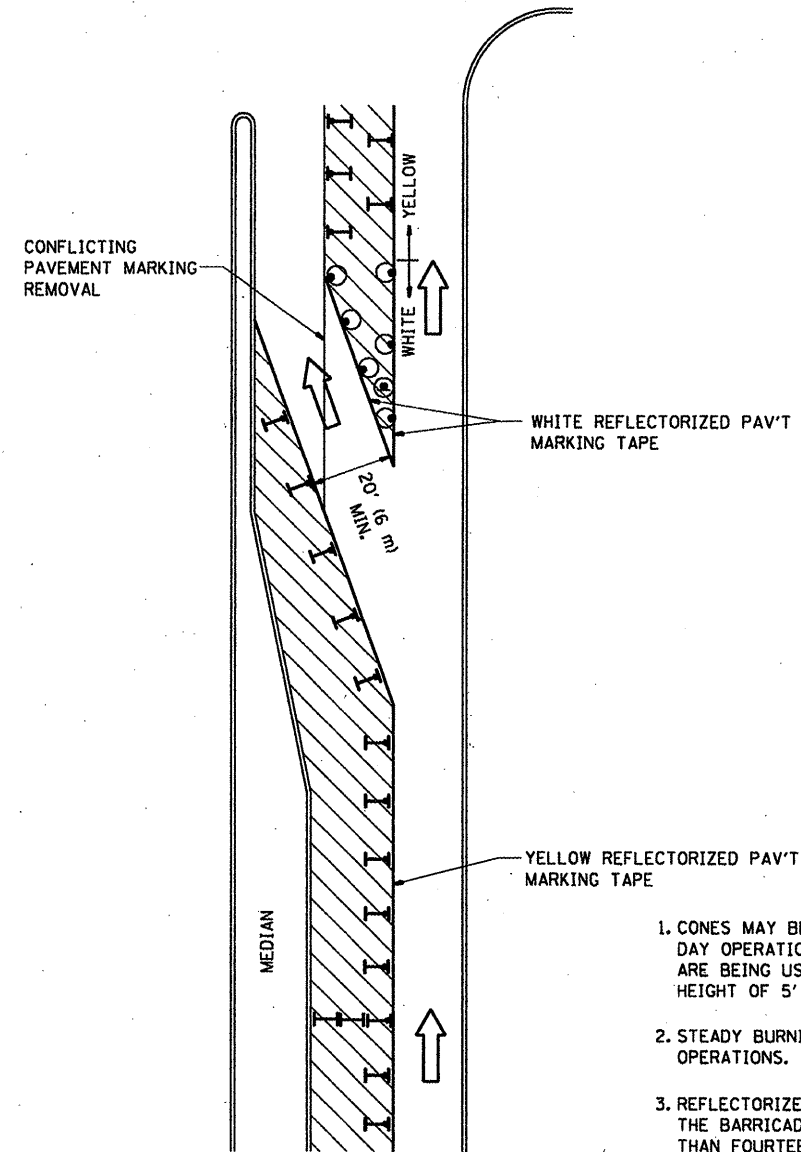
All dimensions are in inches (millimeters) unless otherwise shown.

FILE NAME =	USER NAME = wilgreendp	DESIGNED - EVERS	REVISED - T. RAMMACHER 10-27-94
ca:\pwork\p\WIDOT\WILGREENDP\d0125847\d0125847.dgn	PLT SCALE = 100.0000' / IN.	DRAWN -	REVISED - A. HOUSEH 10-09-96
	PLT DATE = 5/18/2009	CHECKED -	REVISED - A. HOUSEH 10-17-96
		DATE - 03-19-90	REVISED - T. RAMMACHER 01-06-00

**STATE OF ILLINOIS
DEPARTMENT OF TRANSPORTATION**

DISTRICT ONE			
TYPICAL PAVEMENT MARKINGS			
SCALE: NONE	SHEET NO. 1 OF 1 SHEETS	STA.	TO STA.

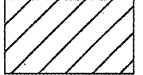
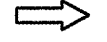



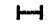
F.A. RTE.	SECTION	COUNTY	TOTAL SHEETS	SHEET NO.
VAR.	2009-0581 Rec-PP	Kane & DUP	25	21
TC-13			CONTRACT NO. 60449	
FED. ROAD DIST. NO. 1 ILLINOIS FED. AID PROJECT				



GENERAL NOTES

1. CONES MAY BE SUBSTITUTED FOR BARRICADES OR DRUMS AT HALF THE SPACING DURING DAY OPERATIONS. CONES SHALL BE A MINIMUM OF 28 (710) IN HEIGHT. WHEN CONES ARE BEING USED, THE "LEFT TURN LANE" SIGN MAY BE SKID MOUNTED AT A MINIMUM HEIGHT OF 5' (1.5 m).
2. STEADY BURNING LIGHTS WILL NOT BE REQUIRED ON BARRICADES OR DRUMS FOR DAY OPERATIONS. ALL LIGHTS SHALL BE MONODIRECTIONAL.
3. REFLECTORIZED TEMPORARY PAVEMENT MARKING TAPE SHALL BE PLACED THROUGHOUT THE BARRICADED AREA OF EACH TURN BAY WHERE THE CLOSURE TIME IS GREATER THAN FOURTEEN DAYS.
4. THIS APPLICATION ALSO APPLIES WHEN WORK IS BEING PERFORMED IN THE RIGHT LANE(S) AND THE RIGHT TURN BAY IS TO REMAIN OPEN. UNDER THIS CONDITION, "RIGHT TURN LANE" R3-100 24 x 24 (600 x 600) AND M6-2R 21 x 15 (530 x 380) SHALL BE USED.
5. THESE CONTROLS SHALL SUPPLEMENT MAINLINE TRAFFIC CONTROL FOR LANE CLOSURES.
6. LONGITUDINAL DIMENSIONS MAY BE ADJUSTED TO FIT FIELD CONDITIONS.
7. FORM BT 725 IS REQUIRED.
8. TRAFFIC CONTROL AND PROTECTION AT TURN BAYS (TO REMAIN OPEN TO TRAFFIC) SHALL BE INCLUDED IN THE COST SPECIFIED TRAFFIC CONTROL STANDARDS OR ITEMS.

LEGEND

-  WORK AREA
-  LANE OPEN TO TRAFFIC
-  TYPE I OR II BARRICADE WITH STEADY BURN LIGHT
-  DRUM WITH STEADY BURN LIGHT
-  DRUM WITH SIGN (WITH OPTIONAL FLASHING LIGHT) SEE DETAIL
-  TYPE I OR II CHECK BARRICADE WITH FLASHING LIGHT

All dimensions are in inches (millimeters) unless otherwise shown.

FILE NAME =	USER NAME = wilgreendp	DESIGNED -	REVISED -T. RAMMACHER 09-08-94
ca:\pwwork\pwidot\WILGREENDP\d0125047\d0125047.dwg	Drawn by	DRAWN -	REVISED - A. HOUSEH 11-07-95
	PLOT SCALE = 100.0000' / IN.	CHECKED -	REVISED - A. HOUSEH 10-12-96
	PLOT DATE = 5/18/2009	DATE -	REVISED -T. RAMMACHER 01-06-00

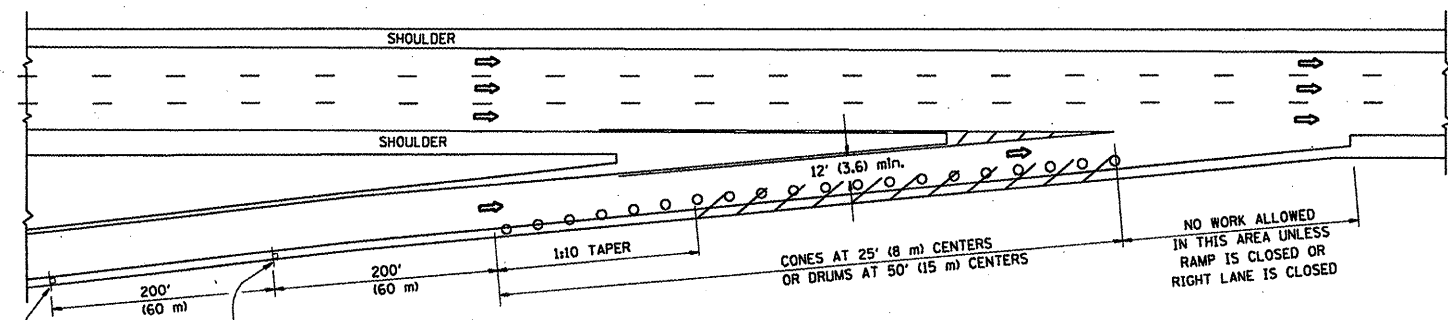
**STATE OF ILLINOIS
DEPARTMENT OF TRANSPORTATION**

**TRAFFIC CONTROL AND PROTECTION AT TURN BAYS
(TO REMAIN OPEN TO TRAFFIC)**

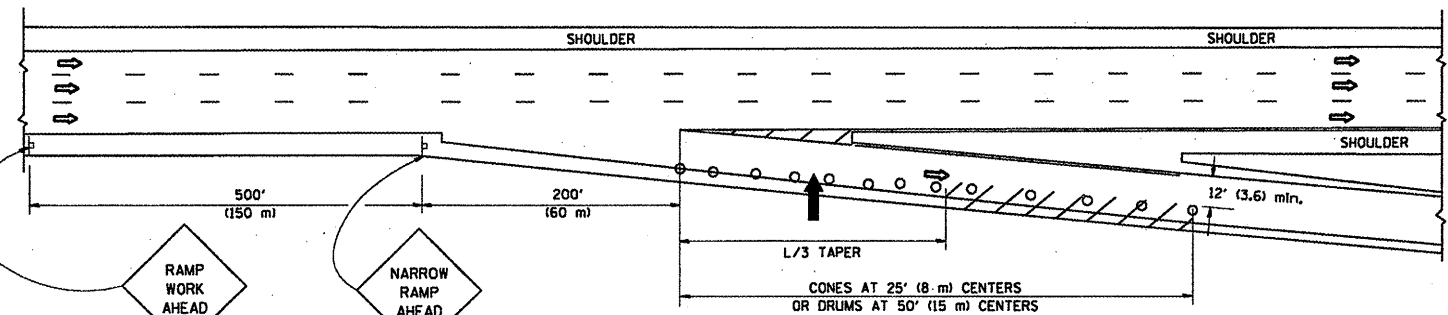
SCALE: NONE SHEET NO. 1 OF 1 SHEETS STA. TO STA.

F.A. RTE.	SECTION	COUNTY	TOTAL SHEETS	SHEET NO.
VAR.	2009-05-81PC-PP	KEANE + DUP	25	22
TC-14			CONTRACT NO. 601179	
FED. ROAD DIST. NO. 1 ILLINOIS FED. AID PROJECT				

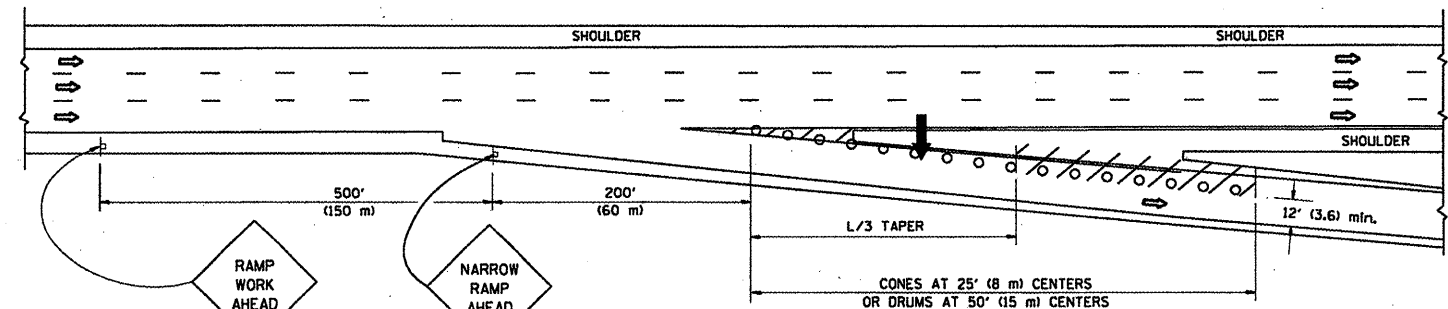
PARTIAL RAMP CLOSURE DETAILS



TYPICAL ENTRANCE RAMP



TYPICAL EXIT RAMP



TYPICAL EXIT RAMP

SYMBOLS

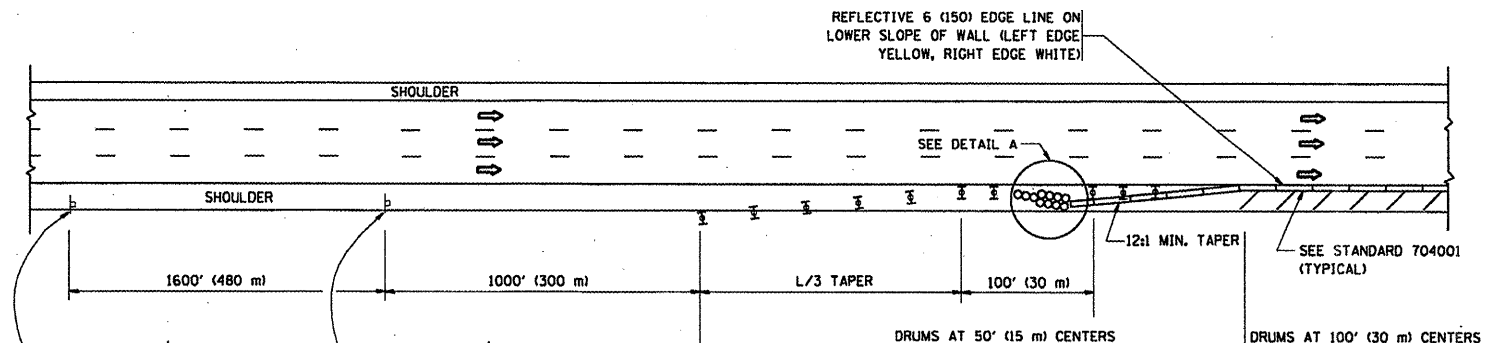
- ➔ ARROWBOARD
- ▨ WORK AREA
- ┆ SIGN ON PORTABLE OR PERMANENT SUPPORT
- FLAGGER WITH CONTROL SIGN
- ⊕ TYPE II BARRICADE, DRUM OR VERTICAL BARRICADE WITH STEADY BURN MONO-DIRECTIONAL LIGHT
- CONE, DRUM OR BARRICADE

GENERAL NOTES

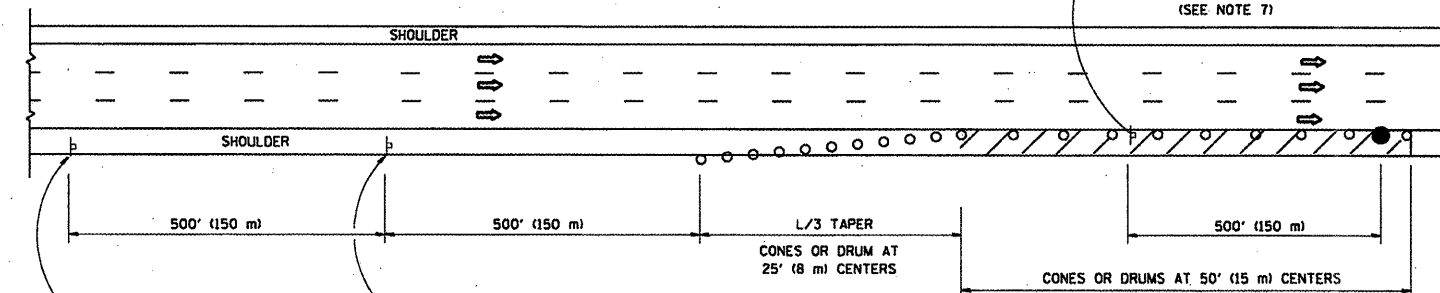
1. THE "L" DISTANCE EQUALS:

SPEED LIMIT	FORMULAS
45 mph (80 km/h) OR GREATER:	METRIC ENGLISH
	$L=0.65(W/S)$ $L=(W/S)$
	W = WIDTH OF OFFSET IN FEET (METERS)
	S = NORMAL POSTED SPEED MPH (KM/H)
2. PLASTIC DRUMS WITH HIGH PERFORMANCE REFLECTIVE SHEETING AND STEADY BURNING LIGHTS ARE REQUIRED FOR ALL NIGHTTIME CLOSURES.
3. ALL SIGNS SHALL BE POST MOUNTED IF THE CLOSURE TIME EXCEEDS FOUR DAYS.
4. FLASHING LIGHTS SHALL BE USED DURING THE HOURS OF DARKNESS AND SHALL BE INSTALLED ABOVE THE FIRST TWO SETS OF SIGNS.

SHOULDER CLOSURE DETAILS



PERMANENT SHOULDER CLOSURE



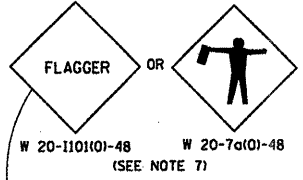
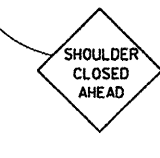
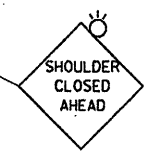
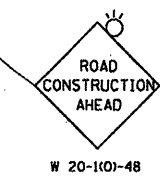
DAYTIME SHOULDER CLOSURE

THIS DETAIL IS USED WHERE:
1. VEHICLES, EQUIPMENT, WORKERS OR THEIR ACTIVITIES ENCOACH IN AN AREA CLOSER THAN 15' (4.5 m) TO THE EDGE OF PAVEMENT FOR A PERIOD IN EXCESS OF 15 MINUTES.

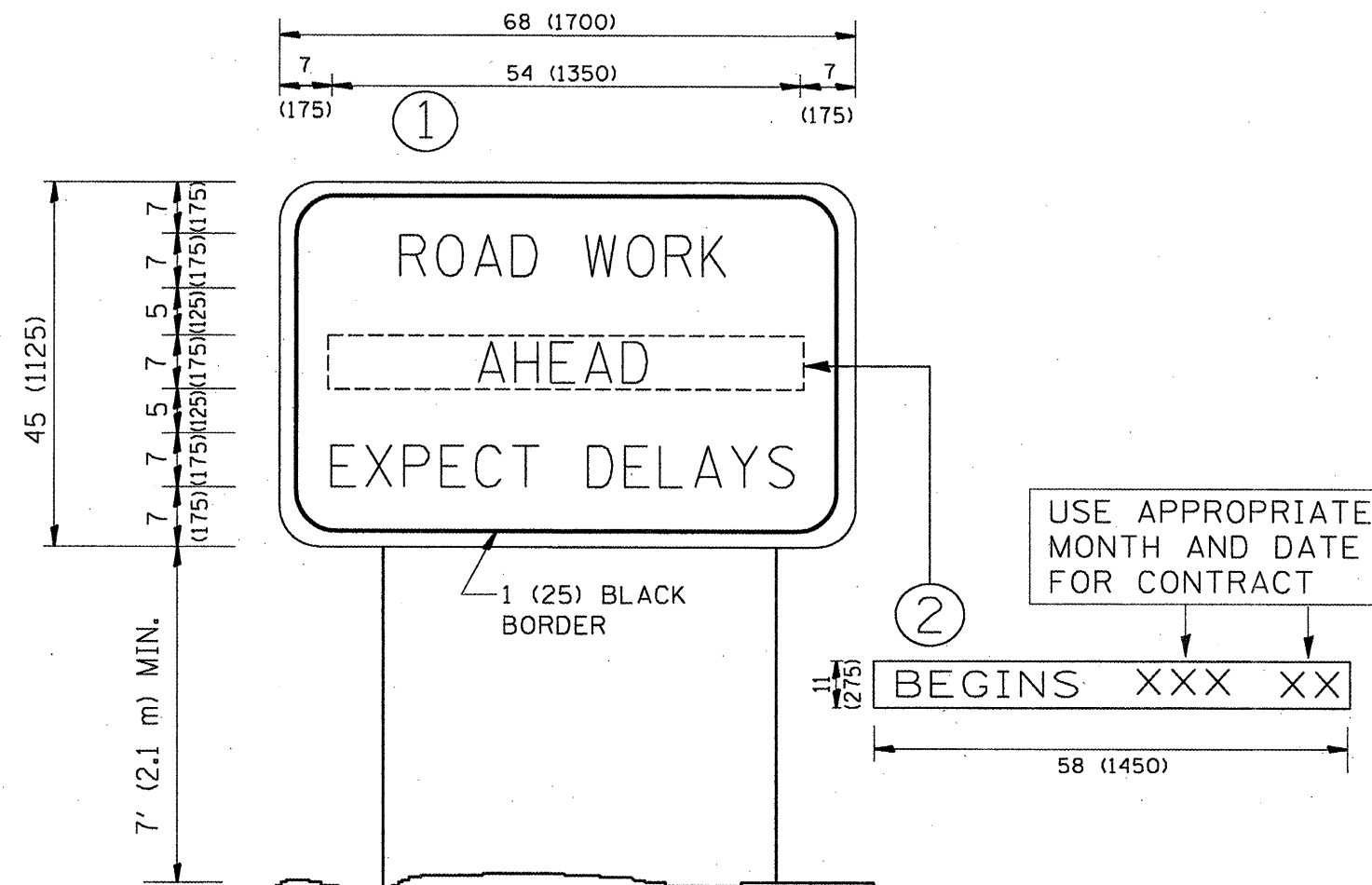
ARRAY DESIGN PER MANUFACTURER TO BE NCHRP 350 COMPLIANT FOR POSTED SPEED.

DETAIL "A"
IMPACT ATTENUATOR, TEMPORARY
(SEE NOTE 5)

ALL DIMENSIONS ARE IN INCHES (MILLIMETERS) UNLESS OTHERWISE SHOWN.



FILE NAME =	USER NAME = wilgreendp	DESIGNED -	REVISED - J.A.F. 12-02	STATE OF ILLINOIS DEPARTMENT OF TRANSPORTATION	TRAFFIC CONTROL DETAILS FOR FREEWAY SHOULDER CLOSURES AND PARTIAL RAMP CLOSURES			F.A. RTE.	SECTION	COUNTY	TOTAL SHEETS	SHEET NO.
ct:\pvt\work\N\WIDOT\WILGREENDP\d0125047\st5std.dgn	PLT SCALE = 100.0000' / IN.	DRAWN - D.W.S.	REVISED - 04-03		SCALE: NONE	SHEET NO. 1 OF 1 SHEETS	STA.	TO STA.	VAR 2009-058 RC-PP Kane + DW 25	23	CONTRACT NO. 60149	
	PLT DATE = 5/18/2009	CHECKED -	REVISED - J.A.F. 12-06						TC-17			
		DATE - 11-96	REVISED - S.P.B. 01-07						FED. ROAD DIST. NO. 1 ILLINOIS FED. AID PROJECT			



NOTES:

1. USE BLACK LETTERING ON ORANGE BACKGROUND.
2. ERECT SIGNS IN ADVANCE OF THE LOCATION FOR THE "ROAD CONSTRUCTION AHEAD" SIGN AT LOCATIONS AS DIRECTED BY THE ENGINEER.
3. ERECT SIGN ① WITH INSTALLED PANEL ② ONE WEEK PRIOR TO THE START OF CONSTRUCTION.
4. REMOVE PANEL ② SOON AFTER THE START OF CONSTRUCTION.
5. SEE SPECIAL PROVISION FOR "TEMPORARY INFORMATION SIGNING" FOR ADDITIONAL INFORMATION.
6. ONE SIGN ASSEMBLY EQUALS 25.70 SQ. FT. (2.3 SQ. M.)
7. SHALL BE PAID FOR AS TEMPORARY INFORMATION SIGNING.

ALL DIMENSIONS ARE IN INCHES (MILLIMETERS) UNLESS OTHERWISE SHOWN.

FILE NAME =	USER NAME = wilgreendp	DESIGNED -	REVISED - R. MIRS 09-15-97
ca:\pwwork\pwidot\WILGREENDP\08125847\d	stStd.dgn	DRAWN -	REVISED - R. MIRS 12-11-97
PLOT SCALE = 100.0000 "/ IN.	CHECKED -	REVISED - T. RAMMACHER 02-02-99	
PLOT DATE = 5/18/2009	DATE -	REVISED - C. JUICIUS 01-31-07	

**STATE OF ILLINOIS
DEPARTMENT OF TRANSPORTATION**

**ARTERIAL ROAD
INFORMATION SIGN**

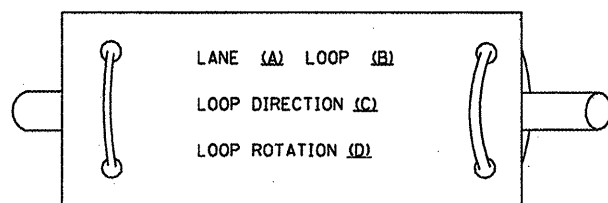
SCALE: NONE SHEET NO. 1 OF 1 SHEETS STA. TO STA.

F.A. RTE.	SECTION	COUNTY	TOTAL SHEETS	SHEET NO.
VAR. 2009-05 BPC-PP	Kane & DA	25	24	
TC-22			CONTRACT NO. 60499	
FED. ROAD DIST. NO. 1 ILLINOIS FED. AID PROJECT				

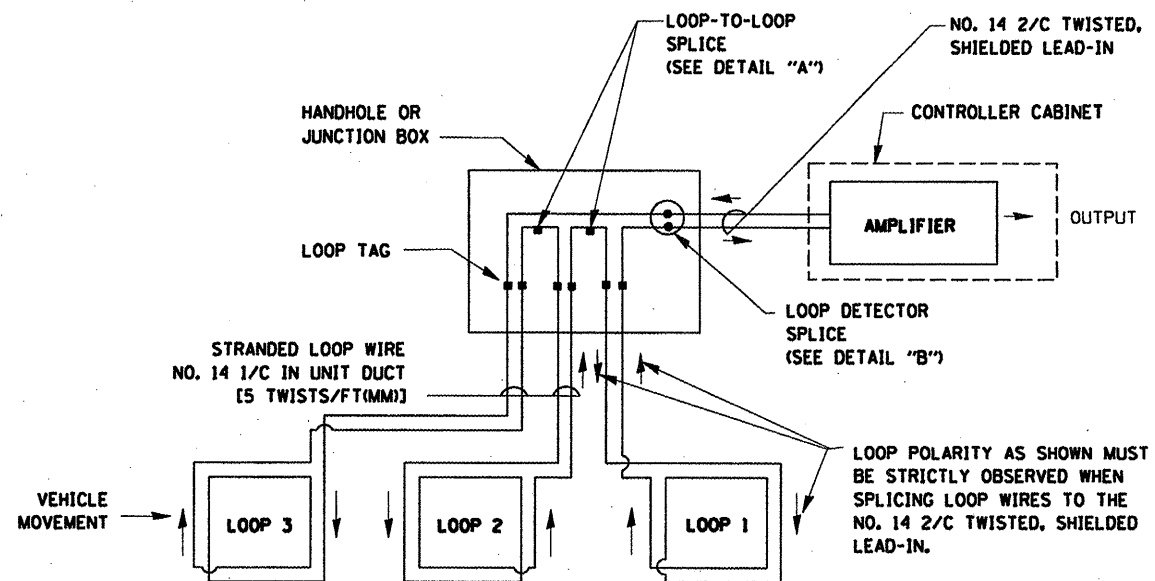
LOOP DETECTOR NOTES

- EACH PAIR OF LOOP WIRES SHALL BE PLACED IN A SEPARATE UNIT DUCT FROM THE EDGE OF PAVEMENT TO THE HANDHOLE. SPACING BETWEEN THE HOLES DRILLED IN THE PAVEMENT SHALL NOT BE LESS THAN 6" (150 mm). UNIT DUCT SHALL BE INCLUDED IN THE COST OF THE LOOP WIRE.
- THE NUMBER OF LOOP TURNS SHALL BE AS RECOMMENDED BY THE AMPLIFIER MANUFACTURER. ALL ADJACENT SIDES OF THE LOOPS SHALL BE INSTALLED IN SUCH A WAY THAT THE CURRENT FLOW IS IN THE SAME DIRECTION TO REINFORCE ITS MAGNETIC FIELDS FOR SMALL VEHICLE DETECTION.
- EACH LOOP LEAD-IN SHALL BE IDENTIFIED AND PERMANENTLY TAGGED IN THE HANDHOLE. EACH LEAD-IN CABLE TAG SHALL INDICATE THE LOCATION OF THE LOOP, LOOP ROTATION (CLOCKWISE/COUNTERCLOCKWISE), LOOP LEAD-IN DIRECTION (IN OR OUT), LOOP CABLE NUMBER AND LOCATION IN CABINET, AND NUMBER OF TURNS IN THE DETECTOR LOOPS IN WATER PROOF INK AS INDICATED ON THE DISTRICT 1 STANDARD TRAFFIC SIGNAL DESIGN DETAIL. THE CONTRACTOR SHALL MARK LOOP LOCATIONS ON RECORD DRAWINGS AND PRESENT TO THE ENGINEER AFTER FINAL INSPECTION. LOOPS SHALL BE MARKED BY LANE AND LOOP NUMBER. SEE DETAIL BELOW.
- ALL LOOP CABLE SHALL BE FASTENED WITH PLASTIC TIE WRAP TO THE HANDHOLE HOOKS.
- IN ASPHALT PAVEMENT, LOOPS SHOULD BE PLACED IN THE BINDER AND DIVESHOLES MARKED AT THE CURB WITH A SAW-CUT. THE SAW-CUT SHALL BE CUT IN ACCORDANCE WITH LOCAL AND E.P.A. DUST CONTROL REQUIREMENTS. DETECTOR LOOP(S) SHALL NOT BE INSTALLED IN WET CONDITIONS AND THE SAW-CUTS MUST BE FREE OF DEBRIS AND RESIDUE SUCH AS DUST AND WATER WHICH IS TO BE ACHIEVED BY THE USE OF COMPRESSED AIR, WIRE BRUSHING AND HEAT DRYING ACCORDING TO SEALANT MANUFACTURER REQUIREMENTS. THE DETECTOR WIRE SHALL BE HELD IN PLACE BY THE USE OF FORM WEDGES. WEDGES SHALL BE SPACED NO MORE THAN 18" (450 mm) APART.
- LOOP SPLICES SHALL BE SOLDERED USING A SOLDERING IRON. BLOW TORCHES OR OTHER DEVICES WHICH OXIDIZE COPPER CABLE SHALL NOT BE ALLOWED FOR SOLDERING OPERATIONS. SEE DETAIL BELOW RIGHT.
- PREFORMED DETECTOR LOOPS SHALL BE USED, AS SHOWN ON THE PLANS, WHERE NEW CONCRETE PAVEMENT IS PROPOSED. THE INSTALLATION OF PREFORMED LOOPS SHALL BE IN ACCORDANCE WITH THE DISTRICT 1 SPECIFICATIONS OR AS DIRECTED BY THE ENGINEER.

LOOP LEAD-IN CABLE TAG

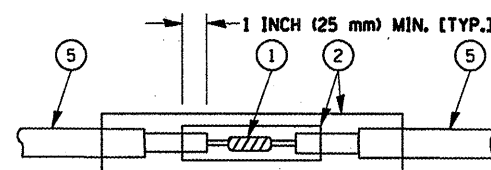


- LANE 1 IS THE LANE CLOSEST TO THE CENTERLINE OF THE ROADWAY
- LOOP #1 IS THE LOOP IN THE LANE CLOSEST TO THE INTERSECTION.
- LABEL LOOP CABLE "IN" OR LOOP CABLE "OUT".
- LABEL LOOP CABLE CLOCKWISE OR LOOP CABLE COUNTERCLOCKWISE.

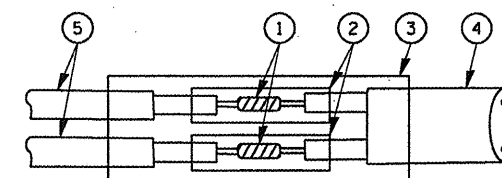


DETECTOR LOOP WIRING SCHEMATIC

- LOOPS SHALL BE SPLICED IN SERIES.
- SAW-CUTS SHALL BE A MINIMUM WIDTH OF 5/16" (8 mm).
- SAW-CUT DEPTHS SHALL BE 3" (75 mm), IF IN CONCRETE. THE SAW-CUT DEPTH SHALL BE TO THE TOP OF THE REINFORCEMENT.
- LOOP CORNERS SHALL BE DRILLED WITH A 2" (50 mm) DIAMETER CORE.



DETAIL "A"
LOOP-TO-LOOP SPLICE



DETAIL "B"
LOOP-TO-CONTROLLER SPLICE

LOOP DETECTOR SPLICE

- WESTERN UNION SPLICE SOLDERED WITH ROSIN CORE FLUX. ALL EXPOSED SURFACES OF THE SOLDER SHALL BE SMOOTH.
- WCSMW 30/100 HEAT SHRINK TUBE, MINIMUM LENGTH 3" (75 mm), UNDERWATER GRADE.
- WCS 200/750 HEAT SHRINK TUBE, MINIMUM LENGTH 6" (150 mm), UNDERWATER GRADE.
- NO. 14 2/C TWISTED, SHIELDED CABLE.
- LOOP CONDUCTOR WITH FLEXIBLE PLASTIC TUBE.

FILE NAME = c:\pwwork\pwidot\WILGREENDP\0125047\stStd.dgn	USER NAME = wilgreendp	DESIGNED - D.A.D.	REVISED - 11-12-01
PLOT SCALE = 100.0000' / IN.	CHECKED - D.A.Z.	REVISOR - BUR, TRAFFIC 01-01-02	REVISED -
PLOT DATE = 5/18/2009	DATE - 05-30-00	REVISED -	

STATE OF ILLINOIS
DEPARTMENT OF TRANSPORTATION

DISTRICT ONE	
STANDARD TRAFFIC SIGNAL DESIGN DETAILS	
SCALE: NONE	SHEET NO. 1 OF 4 SHEETS STA. TO STA.

F.A. RTE.	SECTION	COUNTY	TOTAL SHEETS	SHEET NO.
VAR. 2009-058 PCC-PP	Kane + Du	25	25	
TS-05			CONTRACT NO. 60 H49	
FED. ROAD DIST. NO. 1 ILLINOIS FED. AID PROJECT				