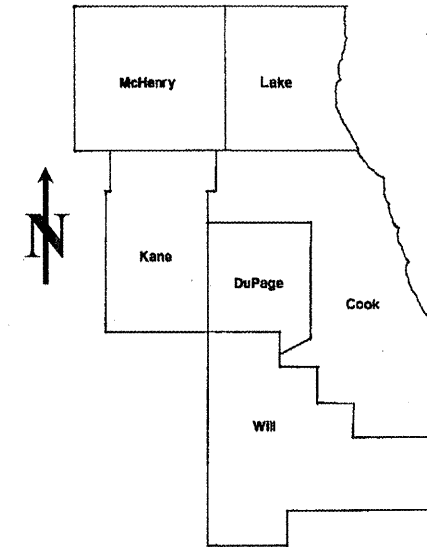


ROUTE	SECTION	COUNTY	TOTAL SHEETS	SHEET NUMBER
VARIOUS	2009-059PCC-PP	COOK	18	1

**STATE OF ILLINOIS**  
**DEPARTMENT OF TRANSPORTATION**  
**DIVISION OF HIGHWAYS**  
**DISTRICT ONE**  
**PROPOSED HIGHWAY PLANS**

**CONTRACT NO. 60H50**

D-91-733-09



LOCATION OF IMPROVEMENT INDICATED THUS: 

FOR INDEX OF SHEETS SEE SHEET 2

VARIOUS ROUTES  
 SECTION: 2009-059PCC-PP  
 VARIOUS LOCATIONS IN NORTH COOK COUNTY  
 P.C.C. PAVEMENT PATCHING  
 COOK COUNTY  
 C-91-733-09

**CONTRACT NO. 60H50**

DISTRICT ONE - DESIGN - PLAN PREPARATION ENGINEER:  
 KEN ENG / (847) 705-4247

**STATE OF ILLINOIS**  
**DEPARTMENT OF TRANSPORTATION**  
**DIVISION OF HIGHWAYS**  
 SUBMITTED: MAY 18, 2009  
*Diane M. O'Keefe* or  
 DEPUTY DIRECTOR OF HIGHWAYS, REGION ENGINEER  
June 26, 2009  
*Charles J. Ingersoll*  
 ENGINEER OF DESIGN AND ENVIRONMENT  
June 26, 2009  
*Christine M. Reed*  
 DIRECTOR, DIVISION OF HIGHWAYS

**PRINTED BY THE AUTHORITY**  
**OF THE STATE OF ILLINOIS**

**J.U.L.I.E.: JOINT UTILITY LOCATION**  
**INFORMATION FOR EXCAVATION**  
**(312) 744-7000**

INDEX OF SHEETS

<u>SHEET NO.</u>	<u>DESCRIPTION</u>
1	TITLE SHEET
2	INDEX OF SHEETS, STATE STANDARDS AND GENERAL NOTES
3	SUMMARY OF QUANTITIES
4	GENERAL LOCATION MAP
5	SUMMARY OF PATCHING SCHEDULE
6-12	PATCHING SCHEDULE
13	TRAFFIC CONTROL AND PROTECTION FOR SIDE ROADS, INTERSECTIONS AND DRIVEWAYS
14	TYPICAL APPLICATIONS: RAISED REFLECTIVE PAVEMENT MARKERS (SNOW-PLOW RESISTANT)
15	DISTRICT ONE TYPICAL PAVEMENT MARKINGS
16	TRAFFIC CONTROL AND PROTECTION OF TURN BAYS (TO REMAIN OPEN TO TRAFFIC)
17	ARTERIAL ROAD INFORMATION SIGN
18	STANDARD TRAFFIC SIGNAL DESIGN DETAILS

STATE STANDARDS

<u>STANDARD NO.</u>	<u>DESCRIPTION</u>
000001-05	TYPICAL SYMBOLS, ABBREVIATIONS AND PATTERNS
442101-07	CLASS B PATCHES
701421-02	LANE CLOSURE, MULTILANE, DAY OPERATIONS ONLY
701422-02	LANE CLOSURE, MULTILANE
701426-03	LANE CLOSURE, MULTILANE, INTERMITTENT OR MOVING OPERATIONS
701601-06	URBAN LANE CLOSURE, MULTILANE, 1W OR 2W WITH NONTRAVERSABLE MEDIAN
701602-04	URBAN LANE CLOSURE, MULTILANE, 2W WITH BIDIRECTIONAL LEFT TURN LANE
701606-06	URBAN LANE CLOSURE, MULTILANE, 2W WITH MOUNTABLE MEDIAN
701701-06	URBAN LANE CLOSURE, MULTILANE INTERSECTION
701901-01	TRAFFIC CONTROL DEVICES

GENERAL NOTES

BEFORE STARTING ANY EXCAVATION, THE CONTRACTOR SHALL CALL "JULIE" AT (800) 892-0123 OR 811 FOR FIELD LOCATIONS OF BURIED ELECTRIC, TELEPHONE AND GAS FACILITIES. (48 HOUR NOTIFICATION REQUIRED)

THE CONTRACTOR WILL NOT BE ALLOWED TO SET UP A YARD OR FIELD OFFICE ON STATE (OR TOLLWAY) PROPERTY WITHOUT WRITTEN PERMISSION FROM THE DEPARTMENT (OR ISTHA)

WHEN ARTIFICIAL LIGHTING IS UTILIZED IN NIGHT OPERATIONS, THE CONTRACTOR SHALL EXERCISE THE UTMOST PRECAUTIONS IN PREVENTING ADVERSE VISIBILITY TO THE MOTORING PUBLIC AND ADJOINING RESIDENTIAL AREAS.

BEFORE BEGINNING ANY WORK, THE CONTRACTOR SHALL RETAIN AND RECORD FOR FUTURE REFERENCE, ALL EXISTING PAVEMENT MARKING LINES (AND RAISED REFLECTIVE PAVEMENT MARKERS) IN ORDER THAT THESE LOCATIONS CAN BE RE-ESTABLISHED FOR STRIPING. EXACT LOCATIONS OF ALL PAVEMENT MARKINGS SHALL BE AS DIRECTED BY THE ENGINEER.

ALL PAVEMENT PATCHING LOCATIONS WILL BE DETERMINED IN THE FIELD BY THE ENGINEER.

THE CONTRACTOR SHALL CONTACT THE DISTRICT ONE TRAFFIC CONTROL SUPERVISOR AT (847) 705-4470 A MINIMUM OF 72 HOURS IN ADVANCE OF BEGINNING WORK.

THE ENGINEER SHALL CONTACT MR. WALLY CZARNY, AREA TRAFFIC FIELD ENGINEER AT (773) 685-8386 MINIMUM OF TWO (2) WEEKS PRIOR TO PLACEMENT OF PERMANENT PAVEMENT MARKINGS.

DOUBLE LANE MARKERS ARE TO BE USED AS SHOWN ON THE DISTRICT ONE DETAIL "TYPICAL APPLICATIONS - RAISED REFLECTIVE PAVEMENT MARKERS (SNOW-PLOW RESISTANT)" SHOWN IN THE PLANS.

THE EXISTING ROADWAY TYPICAL SECTION IS ASSUMED TO BE 10 INCHES OF PORTLAND CEMENT CONCRETE (PCC) PAVEMENT.

NO PATCHING IS TO BE DONE WITH IN 50 FEET OF ANY RAILROAD.

THE COST OF TRAFFIC CONTROL AND PROTECTION FOR THE PROJECT SHALL BE INCLUDED IN THE COST OF THE ASSOCIATED ROAD WORK.

FILE NAME =	USER NAME = wlgreendp	DESIGNED -	REVISED -	<b>STATE OF ILLINOIS DEPARTMENT OF TRANSPORTATION</b>	<b>INDEX OF SHEETS, STATE STANDARDS AND GENERAL NOTES</b>	F.A. RTE.	SECTION	COUNTY	TOTAL SHEETS	SHEET NO.
ci:\pw_work\PWIDOT\WILGREENDP\0125047\Design.dgn	DRAWN -	REVISED -	VAR.			2009-059PCC-PP	COOK	18	2	
PLOT SCALE = 100.0000' / IN.	CHECKED -	REVISED -	CONTRACT NO. 60H50							
PLOT DATE = 5/18/2009	DATE -	REVISED -	FED. ROAD DIST. NO. 1 ILLINOIS FED. AID PROJECT							
				SCALE:	SHEET NO. OF SHEETS	STA.	TO STA.			

SUMMARY OF QUANTITIES			URBAN 100% STATE TOTAL QUANTITIES	CONSTRUCTION TYPE CODE					SUMMARY OF QUANTITIES			TOTAL QUANTITIES	CONSTRUCTION TYPE CODE				
CODE NO	ITEM	UNIT		1000						CODE NO	ITEM		UNIT				
42101300	PROTECTIVE COAT	SO YD	2818	2818													
44001700	COMBINATION CONCRETE CURB AND GUTTER REMOVAL AND REPLACEMENT	FOOT	200	200													
44200970	CLASS B PATCHES, TYPE II, 10 INCH	SO YD	2383	2383													
44200974	CLASS B PATCHES, TYPE III, 10 INCH	SO YD	198	198													
44200976	CLASS B PATCHES, TYPE IV, 10 INCH	SO YD	192	192													
44213200	SAW CUTS	FOOT	14360	14360													
60300305	FRAMES AND LIDS TO BE ADJUSTED	EACH	5	5													
67000400	ENGINEER'S FIELD OFFICE, TYPE A	CAL MO	6	6													
67100100	MOBILIZATION	L SUM	1	1													
70103815	TRAFFIC CONTROL SURVEILLANCE	CAL DA	10	10													
*78008200	POLYUREA PAVEMENT MARKING TYPE I - LETTERS AND SYMBOLS	SO FT	175	175													
*78008210	POLYUREA PAVEMENT MARKING TYPE I - LINE 4"	FOOT	4160	4160													
*78008230	POLYUREA PAVEMENT MARKING TYPE I - LINE 6"	FOOT	300	300													
*78008270	POLYUREA PAVEMENT MARKING TYPE I - LINE 24"	FOOT	75	75													
*78100100	RAISED REFLECTIVE PAVEMENT MARKER	EACH	52	52													
*88600600	DETECTOR LOOP REPLACEMENT	FOOT	100	100													
X0322256	TEMPORARY INFORMATION SIGNING	SO FT	334.1	334.1													
Z0017202	DOWEL BARS 1 1/2"	EACH	8142	8142													
Z0075330	TIE BARS 1 1/4"	EACH	4675	4675													

\* SPECIALTY ITEM

FILE NAME =	USER NAME = wjgreenp	DESIGNED -	REVISED -	<b>STATE OF ILLINOIS DEPARTMENT OF TRANSPORTATION</b>				<b>SUMMARY OF QUANTITIES</b>				F.A. RTE.	SECTION	COUNTY	TOTAL SHEETS	SHEET NO.			
c:\pw\work\PIWIDOT\WILGREENP\012504\Designdgn		DRAWN -	REVISED -									VAR.	2009-059PCC-PP	COOK	18	3			
PLOT SCALE = 100.0000' / IN.		CHECKED -	REVISED -									SCALE: SHEET NO. OF SHEETS STA. TO STA.				CONTRACT NO. 60H50			
PLOT DATE = 5/18/2009		DATE -	REVISED -									FED. ROAD DIST. NO. 1 ILLINOIS FED. AID PROJECT							



PCC PATCHING SUMMARY - NORTH COOK COUNTY	CLASS B PATCHES, 10" TYPE II (SY)	CLASS B PATCHES, 10" TYPE III (SY)	CLASS B PATCHES, 10" TYPE IV (SY)
IL 59 AT IL 72 INTERSECTION	73	49	
IL 62 (EAST OF PALATINE RD. TO WEST OF IL 68)	1164		81
IL 62 (EAST OF PALATINE RD. TO WEST OF IL 68 - SOUTH LEG OF IL 59)	448		
IL 62 (EAST OF PALATINE RD. TO WEST OF IL 68 - NORTH & SOUTH LEGS OF IL 68)	257		
NB IL 83 AT HINTZ RD. (INTERSECTION LANE NO. 1)	16		
PALATINE RD. EXPRESS (UNDER RR BRIDGE BETWEEN WHEELING RD. AND WOLF RD.)	249	72	
PALATIEN RD. EXPRESS (UNDER WOLF RD. BRIDGE)	176	77	111

**SUMMARY TOTALS:**

**2383      198      192**  
**(SY)      (SY)      (SY)**

FILE NAME =	USER NAME = wlgreendp	DESIGNED -	REVISED -
ca:\pvt_work\PWIDOT\WILGREENDP\d0125047\	design.dgn	DRAWN -	REVISED -
	PLOT SCALE = 100.0000' / IN.	CHECKED -	REVISED -
	PLOT DATE = 5/18/2009	DATE -	REVISED -

**STATE OF ILLINOIS  
DEPARTMENT OF TRANSPORTATION**

**SUMMARY OF PATCHING SCHEDULE  
NORTH COOK COUNTY**

SCALE: SHEET NO. OF SHEETS STA. TO STA.

F.A. RTE.	SECTION	COUNTY	TOTAL SHEETS	SHEET NO.
VAR.	2009-059PCC-PP	COOK	18	5
FED. ROAD DIST. NO. 1 ILLINOIS FED. AID PROJECT			<b>CONTRACT NO. 60H50</b>	



ROUTE: IL 62 from East of Palatine Rd. to West of IL 68

CROSS STREETS		DIRECTION (EB/WB) (NB/SB)	LANE NO. (1, 2, 3)	PAVEMENT PATCH WIDTH	PAVEMENT PATCH LENGTH	REPAIR AREA (SQ FT)	REPAIR AREA (SQ YD)
FROM	TO						
East of Palatine Rd.	West of IL 68	EB	1	12	4	48	5
		EB	2	12	4	48	5
		EB	1	12	4	48	5
		EB	2	12	4	48	5
		EB	1	12	5	60	7
		EB	2	12	5	60	7
		EB	LTL	12	5	60	7
		EB	1	12	4	48	5
		EB	2	12	4	48	5
		EB	LTL	12	4	48	5
		EB	1	12	4	48	5
		EB	Intrsection	12	8	96	11
		EB	Intrsection	12	8	96	11
		EB	Intrsection	12	8	96	11
		EB	Intrsection	12	8	96	11
		EB	Intrsection	12	8	96	11
		EB	Intrsection	12	8	96	11
		EB	Intrsection	12	8	96	11
		EB	Intrsection	12	6	72	8
		EB	Intrsection	12	6	72	8
		EB	Intrsection	12	6	72	8
		EB	2	12	6	72	8
		EB	2	12	6	72	8
		EB	1	12	8	96	11
		EB	2	12	8	96	11
		EB	1	12	6	72	8
		EB	2	12	6	72	8
		EB	1	12	4	48	5
		EB	2	12	4	48	5
		EB	1	12	4	48	5
		EB	2	12	4	48	5
		EB	LTL	12	4	48	5
East of Palatine Rd.	West of IL 68	EB	2	12	4	48	5
		EB	LTL	12	4	48	5
		EB	1	12	5	60	7
		EB	2	12	5	60	7
		EB	1	12	5	60	7
		EB	2	12	5	60	7
		EB	LTL	12	5	60	7
		EB	RTL	12	5	60	7
		EB	1	12	6	72	8
		EB	2	12	6	72	8
		EB	3	12	6	72	8
		EB	LTL	12	6	72	8
		EB	RTL	12	6	72	8
		EB	1	12	6	72	8
		EB	2	12	6	72	8
		EB	LTL	12	6	72	8
		EB	LTL	12	6	72	8
		EB	RTL	12	6	72	8
		EB	1	12	6	72	8
		EB	2	12	6	72	8
		EB	RTL	12	6	72	8
		EB	LTL	12	6	72	8
		EB	LTL	12	6	72	8

ROUTE: IL 62 from East of Palatine Rd. to West of IL 68

CROSS STREETS		DIRECTION (EB/WB) (NB/SB)	LANE NO. (1, 2, 3)	PAVEMENT PATCH WIDTH	PAVEMENT PATCH LENGTH	REPAIR AREA (SQ FT)	REPAIR AREA (SQ YD)
FROM	TO						
East of Palatine Rd.	West of IL 68	EB	1	12	6	72	8
		EB	2	12	6	72	8
		EB	1	12	6	72	8
		EB	2	12	6	72	8
		EB	1	12	6	72	8
		EB	2	12	6	72	8
		EB	1	12	4	48	5
		EB	2	12	4	48	5
		EB	1	12	8	96	11
		EB	2	12	8	96	11
		EB	1	12	10	120	13
		EB	1	12	6	72	8
		EB	2	12	6	72	8
		EB	1	12	4	48	5
		EB	2	12	4	48	5
		EB	1	12	4	48	5
		EB	2	12	4	48	5
		EB	1	12	6	72	8
		EB	2	12	6	72	8
		EB	1	12	4	48	5
		EB	2	12	4	48	5
		EB	1	12	5	60	7
		EB	2	12	5	60	7
		EB	LTL	12	5	60	7
		EB	1	12	5	60	7
		EB	2	12	5	60	7
		EB	LTL	12	5	60	7
		EB	1	12	6	72	8
		EB	1	12	4	48	5
		EB	2	12	4	48	5
		EB	1	12	4	48	5
		EB	2	12	4	48	5
		EB	1	12	4	48	5
		EB	2	12	4	48	5
		EB	1	12	5	60	7
		EB	2	12	5	60	7
		EB	1	12	4	48	5
		EB	2	12	4	48	5
East of Palatine Rd.	West of IL 68	WB	1	12	5	60	7
		WB	2	12	5	60	7
		WB	LTL	12	5	60	7
		WB	1	12	5	60	7
		WB	2	12	5	60	7
		WB	Median	12	5	60	7
		WB	1	12	4	48	5
		WB	2	12	4	48	5
		WB	1	12	4	48	5
		WB	2	12	4	48	5
		WB	1	12	6	72	8
		WB	1	12	6	72	8
		WB	2	12	6	72	8
		WB	1	12	4	48	5
		WB	2	12	4	48	5
		WB	1	12	4	48	5
		WB	2	12	4	48	5
		WB	1	12	6	72	8
		WB	LTL	12	6	72	8
		WB	1	12	6	72	8

CONTINUED ON NEXT SHEET

ROUTE: IL 62 from East of Palatine Rd. to West of IL 68

CROSS STREETS		DIRECTION (EB/WB) (NB/SB)	LANE NO. (1, 2, 3)	PAVEMENT PATCH WIDTH	PAVEMENT PATCH LENGTH	REPAIR AREA (SQ FT)	REPAIR AREA (SQ YD)
FROM	TO						
East of Palatine Rd.	West of IL 68	WB	2	12	6	72	8
		WB	LTL	12	6	72	8
		WB	1	12	5	60	7
		WB	2	12	5	60	7
		WB	1	12	4	48	5
		WB	2	12	4	48	5
		WB	1	12	4	48	5
		WB	2	12	4	48	5
		WB	1	12	5	60	7
		WB	2	12	5	60	7
		WB	1	12	5	60	7
		WB	2	12	5	60	7
		WB	LTL	12	5	60	7
		WB	LTL	12	5	60	7
		WB	LTL	12	8	96	11
		WB	LTL	12	4	48	5
		East of Palatine Rd.	West of IL 68	WB	LTL	12	8
WB	LTL			12	8	96	11
WB	2			12	6	72	8
WB	1			12	5	60	7
WB	2			12	5	60	7
WB	1			12	20	240	27
WB	2			12	20	240	27
WB	1			12	20	240	27
WB	1			12	10	120	13
WB	2			12	10	120	13
WB	LTL			12	10	120	13
WB	1			12	8	96	11
WB	1			12	4	48	5
WB	2			12	4	48	5
WB	LTL			12	4	48	5
WB	1			12	10	120	13
WB	2			12	10	120	13
WB	LTL			12	10	120	13
WB	LTL			12	10	120	13
WB	1			12	8	96	11
WB	2			12	8	96	11
WB	LTL	12	8	96	11		
WB	LTL	12	8	96	11		
WB	1	12	6	72	8		
WB	2	12	6	72	8		
WB	LTL	12	6	72	8		
WB	1	12	4	48	5		
WB	2	12	4	48	5		
WB	1	12	4	48	5		
WB	2	12	4	48	5		

TOTALS: 934 FT 1245 SY

FILE NAME =	USER NAME = wilgreendp	DESIGNED -	REVISED -	<b>STATE OF ILLINOIS DEPARTMENT OF TRANSPORTATION</b>	<b>PATCHING SCHEDULE IL 62</b>				F.A. RTE.	SECTION	COUNTY	TOTAL SHEETS	SHEET NO.		
ct:\pw\work\WIDOT\WILGREENDP\d0125047\	design.dgn	DRAWN -	REVISED -		SCALE:	SHEET NO.	OF	SHEETS	STA.	TO STA.	VAR.	2009-059PCC-PP	COOK	18	8
	PLOT SCALE = 100.0000' / IN.	CHECKED -	REVISED -		CONTRACT NO. 60H50										
	PLOT DATE = 5/18/2009	DATE -	REVISED -		FED. ROAD DIST. NO. 1 ILLINOIS FED. AID PROJECT										







ROUTE: Palatine Rd. Express (EB & WB) under RR Bridge between Wheeling Rd. and Wolf Rd.

CROSS STREETS		DIRECTION (EB/WB NB/SB)	LANE NO. (1, 2, 3)	PAVEMENT PATCH WIDTH	PAVEMENT PATCH LENGTH	REPAIR AREA (SQ FT)	REPAIR AREA (SQ YD)
FROM	TO						
Palatine Rd. Express under RR Bridge between	Wheeling Rd. and Wolf Rd.	Under RR (WB)	1	12	9	108	12
			1	12	6	72	8
			1	12	6	72	8
			1	12	12	144	16
			1	12	12	144	16
			2	12	9	108	12
			2	12	3	36	4
			2	12	6	72	8
			2	12	6	72	8
			2	12	6	72	8
			2	12	6	72	8
			2	12	15	180	20
			2	12	6	72	8
			2	12	6	72	8
			2	12	6	72	8
		Under RR (EB)	1	12	6	72	8
			2	12	10	120	13
			1	12	6	72	8
			2	12	6	72	8
			1	12	6	72	8
			2	12	6	72	8
			1	12	6	72	8
			2	12	6	72	8
			1	12	6	72	8
			2	12	6	72	8
			1	12	6	72	8
			2	12	6	72	8
			1	12	6	72	8
			2	12	6	72	8
			1	12	15	180	20
			2	12	6	72	8
			1	12	6	72	8
			2	12	6	72	8

TOTALS: 241 FT 321 SY

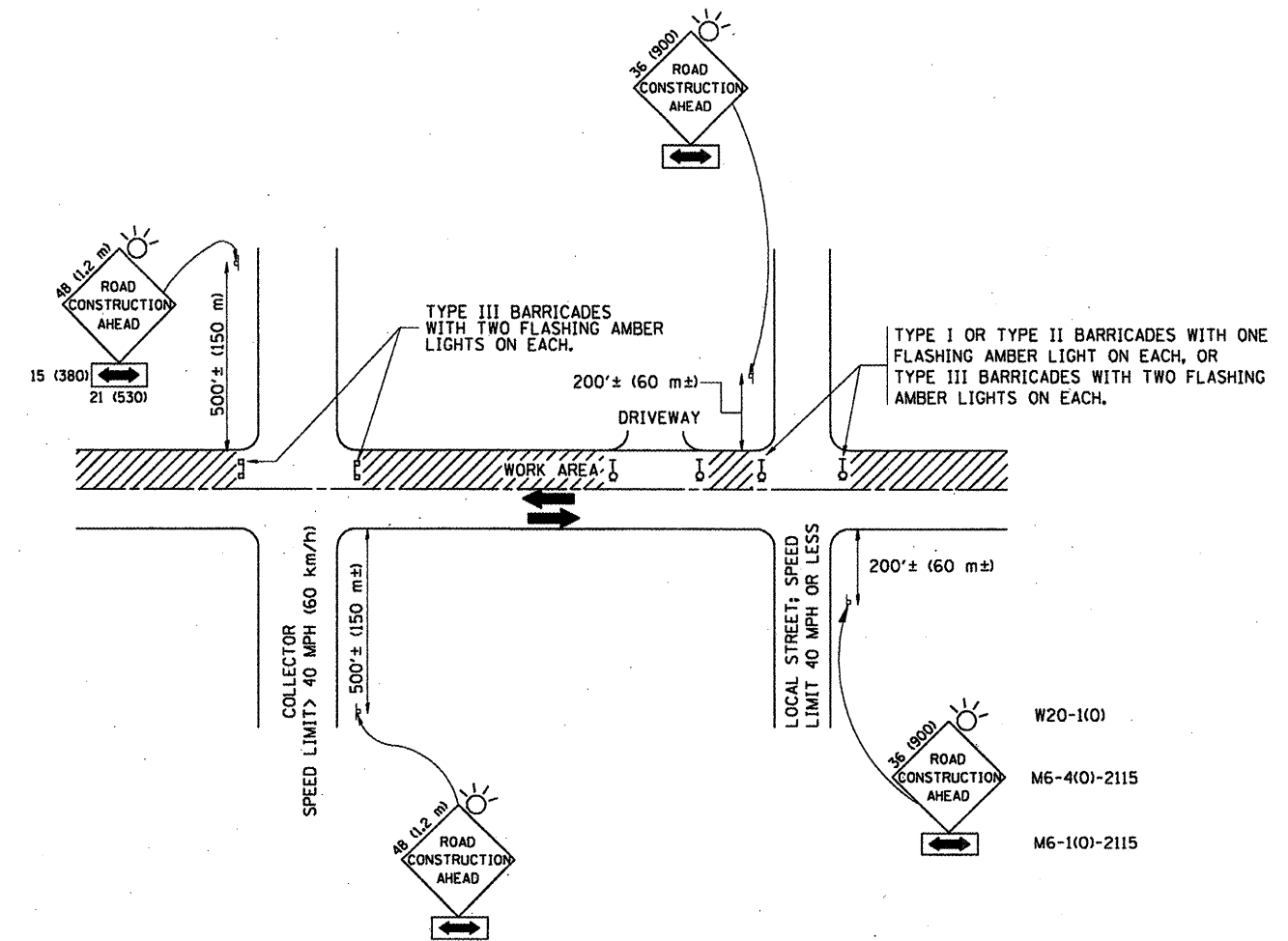
Design.dgn 5/18/2009 4:20:11 PM User=wjgreendp

ROUTE: Palatine Rd. Express (EB & WB) under Wolf Rd. Bridge

CROSS STREETS		DIRECTION (EB/WB) (NB/SB)	LANE NO. (1, 2, 3)	PAVEMENT PATCH WIDTH	PAVEMENT PATCH LENGTH	REPAIR AREA (SQ FT)	REPAIR AREA (SQ YD)
FROM	TO						
Palatine Rd. Express Under Wolf Rd. Bridge (Prospect Heights)		Under	1	12	6	72	8
		Wolf Rd. (EB)	2	12	6	72	8
			1	12	8	96	11
			2	12	12	144	16
			1	12	6	72	8
			1	12	6	72	8
			2	12	20	240	27
			1	12	6	72	8
			1	12	6	72	8
			2	12	6	72	8
			2	12	6	72	8
			1	12	10	120	13
			2	12	33	396	44
			1	12	16	192	21
		Under	1	12	6	72	8
		Wolf Rd. (WB)	1	12	6	72	8
			1	12	6	72	8
			1	12	6	72	8
			1	12	15	180	20
			1	12	9	108	12
			2	12	6	72	8
			2	12	15	180	20
			2	12	6	72	8
			2	12	6	72	8
			2	12	6	72	8
			2	12	9	108	12
			2	12	30	360	40

TOTALS: 273 FT 364 SY

FILE NAME =	USER NAME = wilgreendp	DESIGNED -	REVISED -	<b>STATE OF ILLINOIS DEPARTMENT OF TRANSPORTATION</b>	<b>PATCHING SCHEDULE PALATINE RD. EXPRESS</b>			F.A. RTE.	SECTION	COUNTY	TOTAL SHEETS	SHEET NO.
c:\pwork\PWIDOT\WILGREENDP\0125847\Design.dgn		DRAWN -	REVISED -					VAR.	2009-059PCC-PP	COOK	18	12
PLOT SCALE = 100.0000' / IN.		CHECKED -	REVISED -		SCALE:	SHEET NO. OF SHEETS	STA.	TO STA.	FED. ROAD DIST. NO. 1   ILLINOIS   FED. AID PROJECT			
PLOT DATE = 5/18/2009		DATE -	REVISED -						CONTRACT NO. 60H50			



**TRAFFIC CONTROL AND PROTECTION FOR SIDE ROADS, INTERSECTIONS, AND DRIVEWAYS**

**NOTES:**

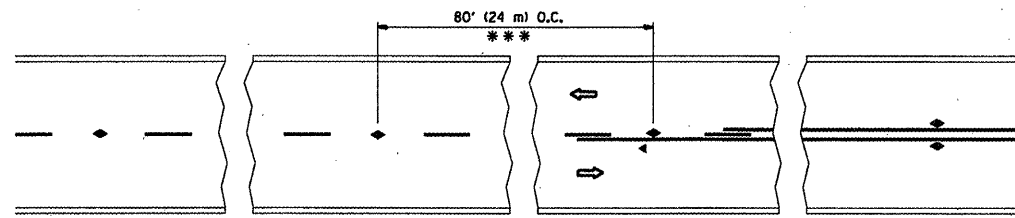
- A. FOR NO LANE RESTRICTION ON THE SIDE ROAD OR DRIVEWAYS:
  1. SIDE ROAD WITH A SPEED LIMIT OF 40 MPH (60 km/h) OR LESS AS SHOWN ON THE DRAWING AND AS DIRECTED BY THE ENGINEER:
    - a) ONE **ROAD CONSTRUCTION AHEAD** SIGN 36 x 36 (900x900) WITH A FLASHER AND FLAG MOUNTED ON IT APPROXIMATELY 200' (60 m) IN ADVANCE OF THE MAIN ROUTE.
    - b) THE CLOSED PORTION OF THE MAIN ROUTE SHALL BE PROTECTED BY BLOCKING WITH TYPE I, TYPE II OR TYPE III BARRICADES, 1/3 OF THE CROSS SECTION OF THE CLOSED PORTION.
  2. SIDE ROAD WITH A SPEED LIMIT GREATER THAN 40 MPH (60 km/h) AS SHOWN ON THE DRAWING AND AS DIRECTED BY THE ENGINEER:
    - a) ONE **ROAD CONSTRUCTION AHEAD** SIGN 48 x 48 (1.2 m x 1.2 m) WITH A FLASHER MOUNTED ON IT APPROXIMATELY 500' (150 m) IN ADVANCE OF THE MAIN ROUTE.
    - b) THE CLOSED PORTION OF THE MAIN ROUTE SHALL BE PROTECTED BY BLOCKING WITH TYPE III BARRICADES, 1/2 OF THE CROSS SECTION OF THE CLOSED PORTION.
- 3. WHEN THE SIDE ROAD LIES BETWEEN THE BEGINNING OF THE MAINLINE SIGNING AND THE WORK ZONE, A SINGLE HEADED ARROW (M6-1) SHALL BE USED IN LIEU OF THE DOUBLE HEADED ARROW (M6-4).

- B. FOR A LANE CLOSURE ON A SIDE ROAD OR DRIVEWAY:
 

USE APPLICABLE PORTIONS OF THE TYPICAL APPLICATION OF TRAFFIC CONTROL DEVICES (STD. 701501, STD. 701606 OR THE APPROPRIATE STANDARD). THE SPACING OF SIGNS AND BARRICADES SHALL BE ADJUSTED FOR FIELD CONDITIONS AS DIRECTED BY THE ENGINEER. THE DIRECTIONAL ARROW SHALL BE COVERED OR REMOVED WHEN NO LONGER CONSISTENT WITH THE SIDE ROAD LANE CLOSURE.
- C. ADVANCE WARNING SIGNS ARE TO BE OMITTED ON DRIVEWAY UNLESS OTHERWISE NOTED.
- D. THE TRAFFIC CONTROL AND PROTECTION FOR SIDE ROADS, INTERSECTIONS, AND DRIVEWAYS SHALL BE INCIDENTAL TO THE COST OF SPECIFIED TRAFFIC CONTROL STANDARDS OR ITEMS.

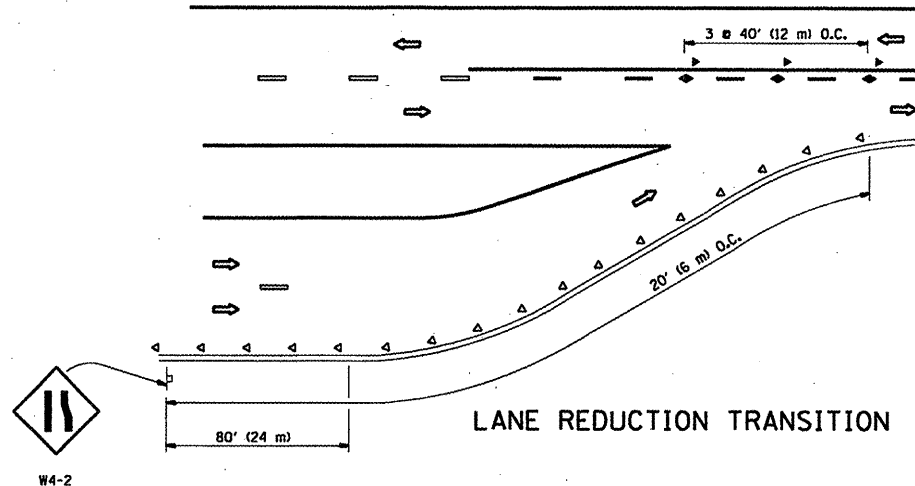
All dimensions are in millimeters (inches) unless otherwise shown.

FILE NAME =	USER NAME = wilgreendp	DESIGNED - LHA	REVISED - J. OBERLE 10-18-95	<b>STATE OF ILLINOIS DEPARTMENT OF TRANSPORTATION</b>	<b>TRAFFIC CONTROL AND PROTECTION FOR SIDE ROADS, INTERSECTIONS, AND DRIVEWAYS</b>			F.A. RTE.	SECTION	COUNTY	TOTAL SHEETS	SHEET NO.
01:\pwwork\pwwid01\WILGREENDP\d0125047\d0125047.dgn		DRAWN -	REVISED - A. HOUSEH 03-06-96		SCALE: NONE	SHEET NO. 1 OF 1 SHEETS	STA.	TO STA.	VAR. 2009-059RCC-PP	COOK	18	13
PLOT SCALE = 100.0000' / IN.		CHECKED -	REVISED - A. HOUSEH 10-15-96					TC-10		CONTRACT NO. 60 H50		
PLOT DATE = 5/18/2009		DATE - 06-89	REVISED - T. RAMMACHER 01-06-00		FED. ROAD DIST. NO. 1 (ILLINOIS) FED. AID PROJECT							

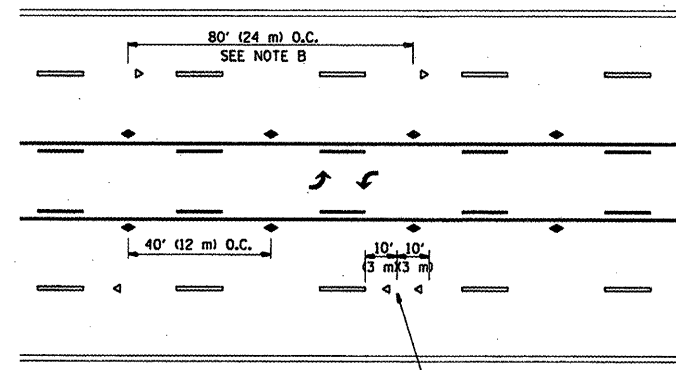


\*\*\* REDUCE TO 40' (12 m) O.C. ON CURVES WITH POSTED OR ADVISORY SPEED 45 M.P.H. (70 km/h) OR LESS.

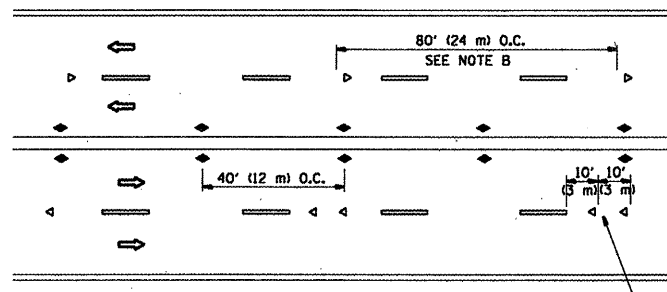
TWO-LANE/TWO-WAY



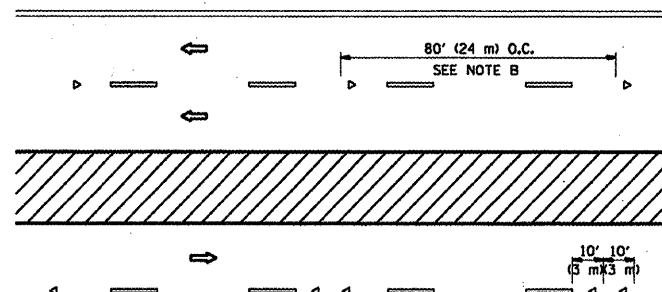
LANE REDUCTION TRANSITION



TWO-WAY LEFT TURN



MULTI-LANE/UNDIVIDED



MULTI-LANE/DIVIDED

GENERAL NOTES

1. MARKERS USED WITH DASHED LINES SHALL BE CENTERED IN THE GAP BETWEEN SEGMENTS.
2. MARKERS USED ADJACENT TO SOLID LINES SHALL BE OFFSET 2 TO 3 (50 TO 75) TOWARD TRAFFIC AS SHOWN.
3. MARKERS THROUGH TANGENTS LESS THAN 500' (150 m) IN LENGTH BETWEEN CURVES SHALL BE INSTALLED AT THE LESSER OF THE TWO CURVE SPACINGS.

SYMBOLS

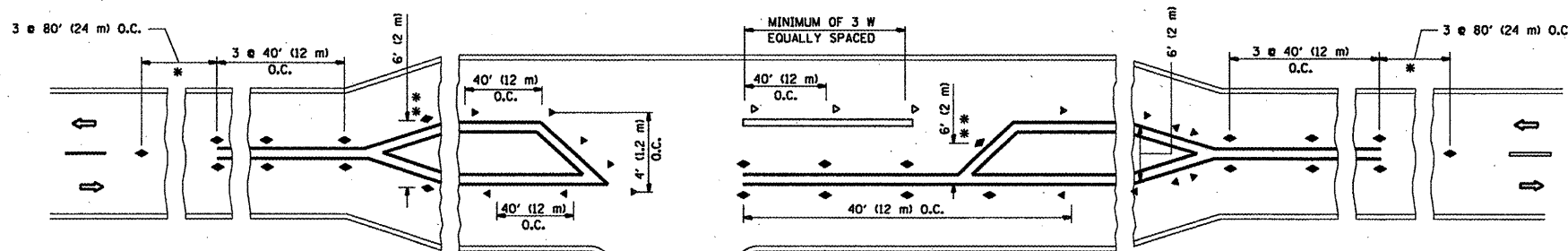
- YELLOW STRIPE
- WHITE STRIPE
- ◀ ONE-WAY AMBER MARKER
- ◀ ONE-WAY CRYSTAL MARKER (W/O)
- ◀ TWO-WAY AMBER MARKER

LANE MARKER NOTES

- A. USE DOUBLE LANE LINE MARKERS SPACED AS SHOWN.
- B. REDUCE TO 40' (12 m) O.C. ON CURVES WHERE ADVISORY SPEEDS ARE 10 M.P.H (20 km/h) LOWER THAN POSTED SPEEDS.

DESIGN NOTES

1. DOUBLE LANE LINE MARKERS SHALL BE USED UNLESS SPECIFIED OTHERWISE.
2. EXCEPT AS SHOWN ON THE LANE REDUCTION TRANSITION AND FREEWAY EXIT RAMP DETAIL, MARKERS ARE NOT TO BE SPECIFIED ON RIGHT EDGE LINES.
3. THE EXACT MARKER LIMITS, SPACING, AND COLOR SHOULD BE INCLUDED IN THE PLANS.
4. MARKERS SHOULD NOT BE USED ALONGSIDE CURBS EXCEPT FOR EXTREMELY SHORT SECTIONS OF CURBS WHERE NOT MORE THAN TWO MARKERS WOULD BE INVOLVED.



LEFT TURN

\* SEE TWO-LANE/TWO-WAY WHERE MARKERS CONTINUE  
 \*\* WHERE THE MEDIAN WIDTH IS 6' (2 m) OR LESS USE TWO-WAY MARKERS.

All dimensions are in inches (millimeters) unless otherwise shown.

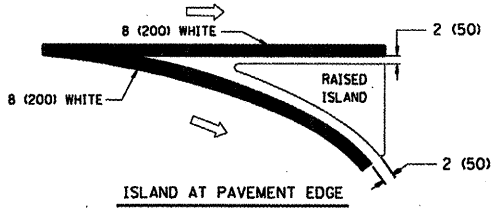
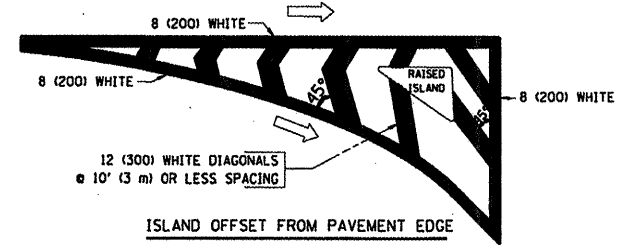
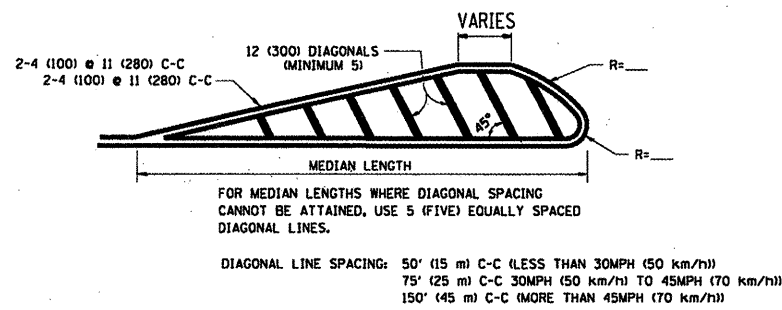
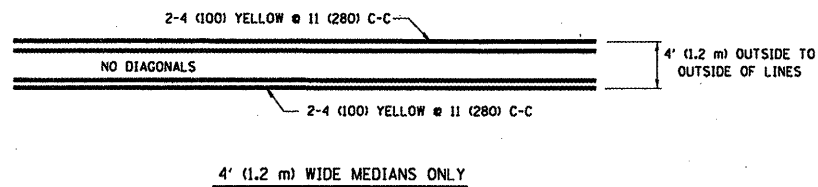
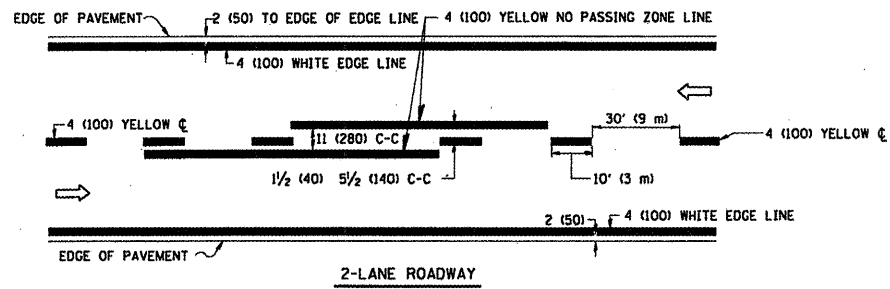
STATE OF ILLINOIS  
 DEPARTMENT OF TRANSPORTATION

TYPICAL APPLICATIONS  
 RAISED REFLECTIVE PAVEMENT MARKERS (SNOW-PLow RESISTANT)

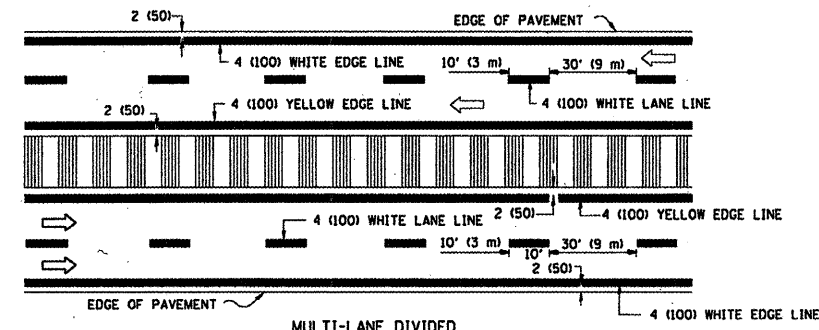
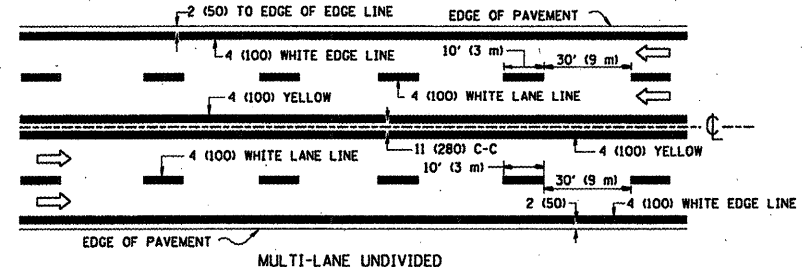
FILE NAME =	USER NAME = wilgreendp	DESIGNED -	REVISED - T. RAMMACHER 09-19-94
et:\work\work\PIWIDOT\WILGREENDP\d0125047\ststd.dgn		DRAWN -	REVISED - T. RAMMACHER 03-12-99
PLOT SCALE = 100.0000' / IN.		CHECKED -	REVISED - T. RAMMACHER 01-06-00
PLOT DATE = 5/18/2009		DATE -	REVISED -

SCALE: NONE SHEET NO. 1 OF 1 SHEETS STA. TO STA.

F.A. RTE.	SECTION	COUNTY	TOTAL SHEETS	SHEET NO.
VAR. 2009-059 Pcc-PP		COOK	18	14
	TC-11		CONTRACT NO. 60H50	
FED. ROAD DIST. NO. 1   ILLINOIS   FED. AID PROJECT				

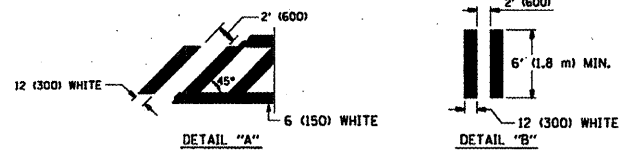
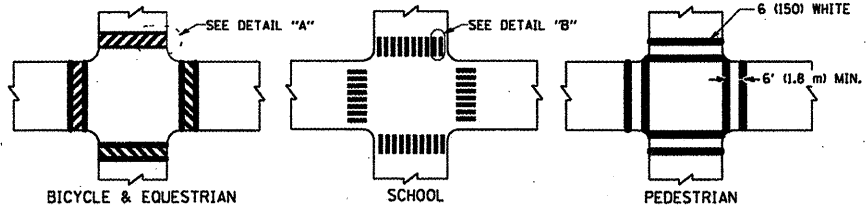


TYPICAL ISLAND MARKING

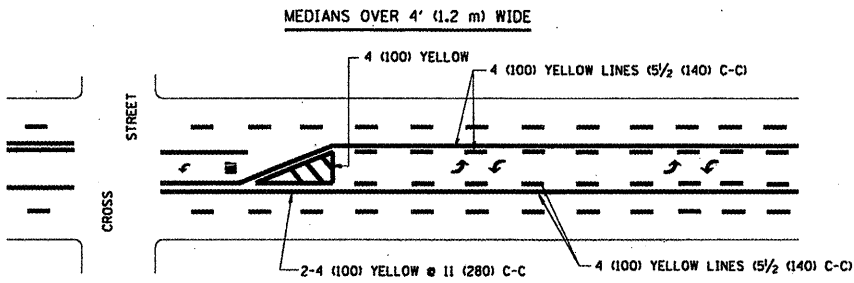


NOTE: MEDIANS WITH BARRIER CURB DO NOT REQUIRE AN EDGE LINE

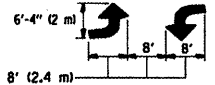
TYPICAL LANE AND EDGE LINE MARKING



TYPICAL CROSSWALK MARKING

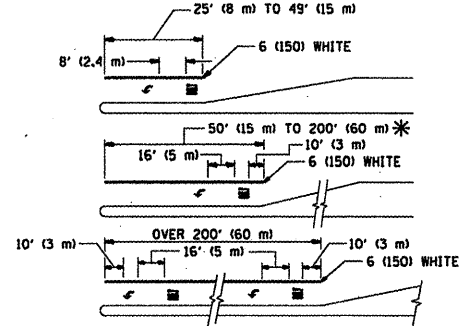


A MINIMUM OF TWO PAIRS OF TURN ARROWS SHALL BE USED, WHITE IN COLOR. ADDITIONAL PAIRS SHALL BE PLACED AT 200' (60 m) TO 300' (90 m) INTERVALS.



MEDIAN WITH TWO-WAY LEFT TURN LANE

TYPICAL PAINTED MEDIAN MARKING



FULL SIZE LETTERS 8' (2.4 m) AND ARROWS SHALL BE USED. AREA = 15.6 SQ. FT. (1.5 m<sup>2</sup>) ONLY AREA = 20.8 SQ. FT. (1.9 m<sup>2</sup>)

\* TURN LANES IN EXCESS OF 400' (120 m) IN LENGTH MAY HAVE AN ADDITIONAL SET OF ARROW - "ONLY" INSTALLED MIDWAY BETWEEN THE OTHER TWO SETS OF ARROW - "ONLY".

TYPICAL LEFT (OR RIGHT) TURN LANE

TYPICAL TURN LANE MARKING

TYPE OF MARKING	WIDTH OF LINE	PATTERN	COLOR	SPACING / REMARKS
CENTERLINE ON 2 LANE PAVEMENT	4 (100)	SKIP-DASH	YELLOW	10' (3 m) LINE WITH 30' (9 m) SPACE
CENTERLINE ON MULTI-LANE UNDIVIDED PAVEMENT	2 @ 4 (100)	SOLID	YELLOW	11 (280) C-C
NO PASSING ZONE LINES: FOR ONE DIRECTION FOR BOTH DIRECTIONS	4 (100) 2 @ 4 (100)	SOLID SOLID	YELLOW YELLOW	5/2 (140) C-C FROM SKIP-DASH CENTERLINE 11 (280) C-C OMIT SKIP-DASH CENTERLINE BETWEEN
LANE LINES	4 (100) 5 (125) ON FREEWAYS	SKIP-DASH SKIP-DASH	WHITE WHITE	10' (3 m) LINE WITH 30' (9 m) SPACE
DOTTED LINES (EXTENSIONS OF CENTER, LANE OR TURN LANE MARKINGS)	SAME AS LINE BEING EXTENDED	SKIP-DASH	SAME AS LINE BEING EXTENDED	2' (600) LINE WITH 6' (1.8 m) SPACE
EDGE LINES	4 (100)	SOLID	YELLOW-LEFT WHITE-RIGHT	OUTLINE MOUNTABLE MEDIANS IN YELLOW; EDGE LINES ARE NOT USED NEXT TO BARRIER CURB
TURN LANE MARKINGS	6 (150) LINES, FULL SIZE LETTERS & SYMBOLS (8' (2.4m))	SOLID	WHITE	SEE TYPICAL TURN LANE MARKING DETAIL
TWO WAY LEFT TURN MARKING.	2 @ 4 (100) EACH DIRECTION 8' (2.4m) LEFT ARROW	SKIP-DASH AND SOLID IN PAIRS	YELLOW WHITE	10' (3 m) LINE WITH 30' (9 m) SPACE FOR SKIP-DASH 5/2 (140) C-C BETWEEN SOLID LINE AND SKIP-DASH LINE SEE TYPICAL TWO-WAY LEFT TURN MARKING DETAIL
CROSSWALK LINES (PEDESTRIAN) A. DIAGONALS (BIKE & EQUESTRIAN) B. LONGITUDINAL BARS (SCHOOL)	2 @ 6 (150) 12 (300) @ 45° 12 (300) @ 90°	SOLID SOLID SOLID	WHITE WHITE WHITE	NOT LESS THAN 6' (1.8 m) APART 2' (600) APART SEE TYPICAL CROSSWALK MARKING DETAILS.
STOP LINES	24 (600)	SOLID	WHITE	PLACE 4' (1.2 m) IN ADVANCE OF AND PARALLEL TO CROSSWALK, IF PRESENT. OTHERWISE, PLACE AT DESIRED STOPPING POINT, PARALLEL TO CROSSROAD CENTERLINE, WHERE POSSIBLE
PAINTED MEDIANS	2 @ 4 (100) WITH 12 (300) DIAGONALS @ 45° NO DIAGONALS USED FOR 4' (1.2 m) WIDE MEDIANS	SOLID	YELLOW; TWO WAY TRAFFIC WHITE; ONE WAY TRAFFIC	11 (280) C-C FOR THE DOUBLE LINE SEE TYPICAL PAINTED MEDIAN MARKING.
GORE MARKING AND CHANNELIZING LINES	8 (200) WITH 12 (300) DIAGONALS @ 45°	SOLID	WHITE	DIAGONALS: 15' (4.5 m) C-C (LESS THAN 30MPH (50 km/h)) 20' (6 m) C-C 30MPH (50 km/h) TO 45MPH (70 km/h) 30' (9 m) C-C (OVER 45MPH (70 km/h))
RAILROAD CROSSING	24 (600) TRANSVERSE LINES; "RR" 15 6' (1.8 m) LETTERS; 16 (400) LINE FOR "X"	SOLID	WHITE	SEE STATE STANDARD 780001 AREA OF: "R"=3.6 SQ. FT. (0.33 m <sup>2</sup> ) EACH "X"=54.0 SQ. FT. (5.0 m <sup>2</sup> )
SHOULDER DIAGONALS	12 (300) @ 45°	SOLID	WHITE - RIGHT YELLOW - LEFT	50' (15 m) C-C (LESS THAN 30MPH (50 km/h)) 75' (25 m) C-C (30 MPH (50 km/h) TO 45MPH (70 km/h)) 150' (45 m) C-C (OVER 45MPH (70 km/h))

FOR FURTHER DETAILS ON PAVEMENT MARKING REFER TO STANDARD SPECIFICATIONS FOR ROAD AND BRIDGE CONSTRUCTION AND STATE STANDARD 780001.

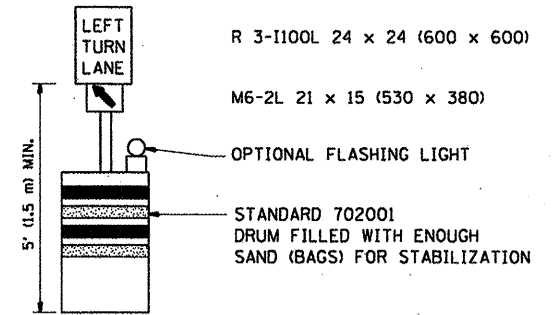
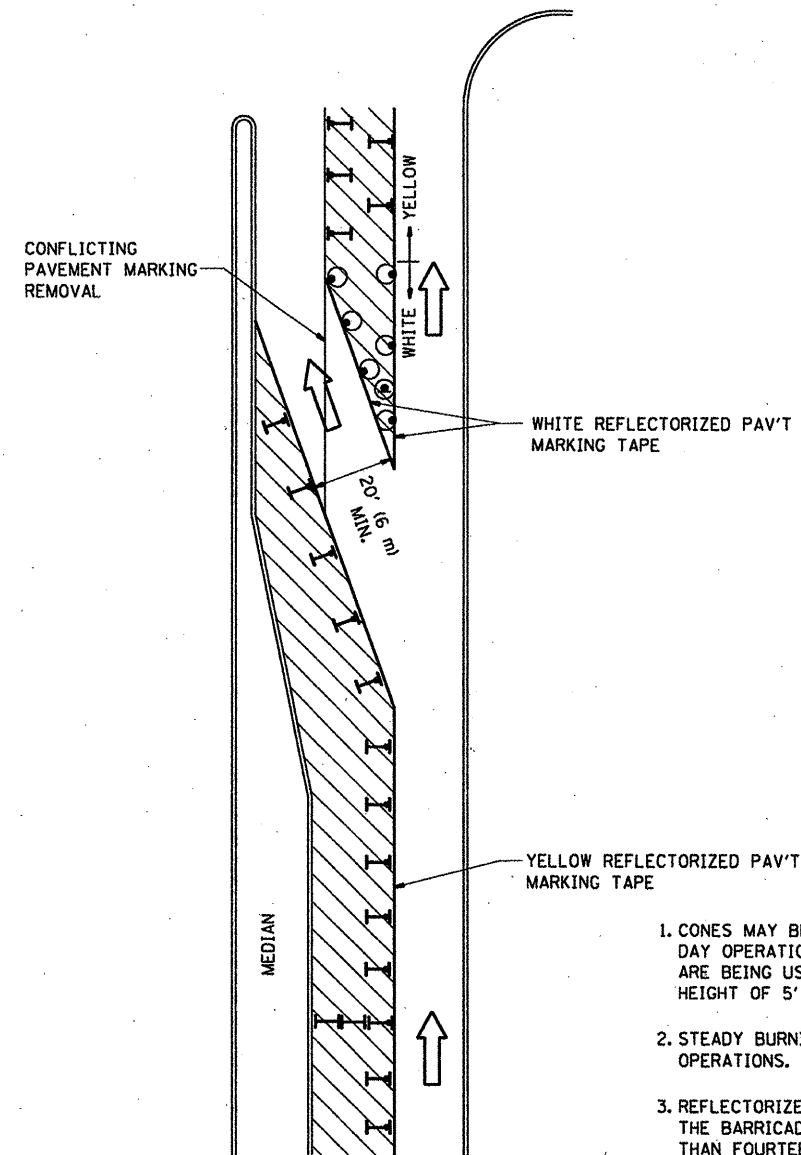
All dimensions are in inches (millimeters) unless otherwise shown.

FILE NAME = cr\pwwork\pwwdot\wlgreenop\d0125047\d0125047.dgn	USER NAME = wlgreenop	DESIGNED - EVERS	REVISED - T. RAMMACHER 10-27-94
		DRAWN -	REVISED - A. HOUSEH 10-09-96
	PLOT SCALE = 1/8" = 1' IN.	CHECKED -	REVISED - A. HOUSEH 10-17-96
	PLOT DATE = 5/18/2009	DATE - 03-19-90	REVISED - T. RAMMACHER 01-06-00

STATE OF ILLINOIS  
DEPARTMENT OF TRANSPORTATION

DISTRICT ONE			
TYPICAL PAVEMENT MARKINGS			
SCALE: NONE	SHEET NO. 1 OF 1 SHEETS	STA.	TO STA.

F.A. RTE.	SECTION	COUNTY	TOTAL SHEETS	SHEET NO.
2009-05A-PC-PP		COOK	18	15
TC-13		CONTRACT NO. 60H50		
FED. ROAD DIST. NO. 1 ILLINOIS FED. AID PROJECT				


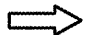



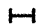


**GENERAL NOTES**

1. CONES MAY BE SUBSTITUTED FOR BARRICADES OR DRUMS AT HALF THE SPACING DURING DAY OPERATIONS. CONES SHALL BE A MINIMUM OF 28 (710) IN HEIGHT. WHEN CONES ARE BEING USED, THE "LEFT TURN LANE" SIGN MAY BE SKID MOUNTED AT A MINIMUM HEIGHT OF 5' (1.5 m).
2. STEADY BURNING LIGHTS WILL NOT BE REQUIRED ON BARRICADES OR DRUMS FOR DAY OPERATIONS. ALL LIGHTS SHALL BE MONODIRECTIONAL.
3. REFLECTORIZED TEMPORARY PAVEMENT MARKING TAPE SHALL BE PLACED THROUGHOUT THE BARRICADED AREA OF EACH TURN BAY WHERE THE CLOSURE TIME IS GREATER THAN FOURTEEN DAYS.
4. THIS APPLICATION ALSO APPLIES WHEN WORK IS BEING PERFORMED IN THE RIGHT LANE(S) AND THE RIGHT TURN BAY IS TO REMAIN OPEN. UNDER THIS CONDITION, "RIGHT TURN LANE" R3-100 24 x 24 (600 x 600) AND M6-2R 21 x 15 (530 x 380) SHALL BE USED.
5. THESE CONTROLS SHALL SUPPLEMENT MAINLINE TRAFFIC CONTROL FOR LANE CLOSURES.
6. LONGITUDINAL DIMENSIONS MAY BE ADJUSTED TO FIT FIELD CONDITIONS.
7. FORM BT 725 IS REQUIRED.
8. TRAFFIC CONTROL AND PROTECTION AT TURN BAYS (TO REMAIN OPEN TO TRAFFIC) SHALL BE INCLUDED IN THE COST SPECIFIED TRAFFIC CONTROL STANDARDS OR ITEMS.

All dimensions are in inches (millimeters) unless otherwise shown.

**LEGEND**

-  WORK AREA
-  LANE OPEN TO TRAFFIC
-  TYPE I OR II BARRICADE WITH STEADY BURN LIGHT
-  DRUM WITH STEADY BURN LIGHT
-  DRUM WITH SIGN (WITH OPTIONAL FLASHING LIGHT) SEE DETAIL
-  TYPE I OR II CHECK BARRICADE WITH FLASHING LIGHT

STATE OF ILLINOIS  
DEPARTMENT OF TRANSPORTATION

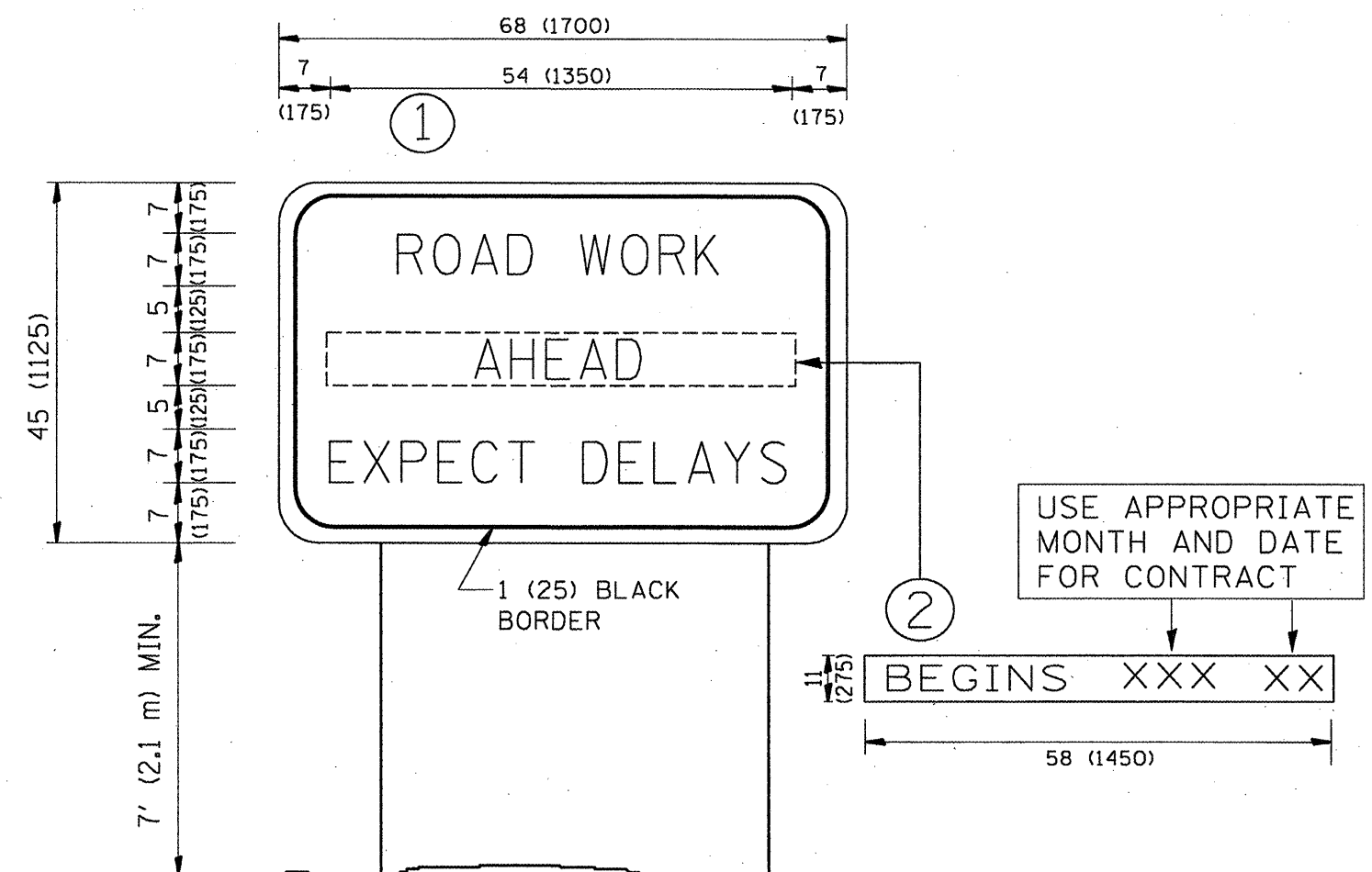
TRAFFIC CONTROL AND PROTECTION AT TURN BAYS  
(TO REMAIN OPEN TO TRAFFIC)

SCALE: NONE SHEET NO. 1 OF 1 SHEETS STA. TO STA.

F.A. RTE.	SECTION	COUNTY	TOTAL SHEETS	SHEET NO.
VAR. 2009-0592C-PP	COOK	18	16	
TC-14			CONTRACT NO. 60H50	
FED. ROAD DIST. NO. 1 ILLINOIS FED. AID PROJECT				

FILE NAME =	USER NAME = wilgreendp	DESIGNED -	REVISED -T. RAMMACHER 09-08-94
c:\pwork\PWIDOT\WILGREENDP\0125047\0125047.dgn	std.dgn	DRAWN -	REVISED - A. HOUSEH 11-07-95
PLOT SCALE = 100.0000 "/ IN.	CHECKED -	REVISED - A. HOUSEH 10-12-96	
PLOT DATE = 5/18/2009	DATE -	REVISED -T. RAMMACHER 01-06-00	





**NOTES:**

1. USE BLACK LETTERING ON ORANGE BACKGROUND.
2. ERECT SIGNS IN ADVANCE OF THE LOCATION FOR THE "ROAD CONSTRUCTION AHEAD" SIGN AT LOCATIONS AS DIRECTED BY THE ENGINEER.
3. ERECT SIGN ① WITH INSTALLED PANEL ② ONE WEEK PRIOR TO THE START OF CONSTRUCTION.
4. REMOVE PANEL ② SOON AFTER THE START OF CONSTRUCTION.
5. SEE SPECIAL PROVISION FOR "TEMPORARY INFORMATION SIGNING" FOR ADDITIONAL INFORMATION.
6. ONE SIGN ASSEMBLY EQUALS 25.70 SQ. FT. (2.3 SQ. M.)
7. SHALL BE PAID FOR AS TEMPORARY INFORMATION SIGNING.

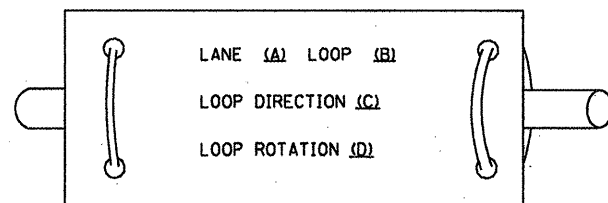
ALL DIMENSIONS ARE IN INCHES (MILLIMETERS) UNLESS OTHERWISE SHOWN.

FILE NAME = c:\pwwork\VPWIDOT\WJLGREENDP\d0125647\estStd.dgn	USER NAME = wjlgreendp	DESIGNED -	REVISED - R. MIRS 09-15-97	<b>STATE OF ILLINOIS DEPARTMENT OF TRANSPORTATION</b>	<b>ARTERIAL ROAD INFORMATION SIGN</b>	F.A. RTE.	SECTION	COUNTY	TOTAL SHEETS	SHEET NO.
		DRAWN -	REVISED - R. MIRS 12-11-97			VAR. 2009-059 Acc-PP	COOK	18	17	
		PLOT SCALE = 100.0000' / IN.	REVISED - T. RAMMACHER 02-02-99			TC-22	CONTRACT NO. 601150			
		PLOT DATE = 5/18/2009	REVISED - C. JUCIUS 01-31-07			FED. ROAD DIST. NO. 1 (ILLINOIS) FED. AID PROJECT				
					SCALE: NONE	SHEET NO. 1 OF 1 SHEETS		STA.	TO STA.	

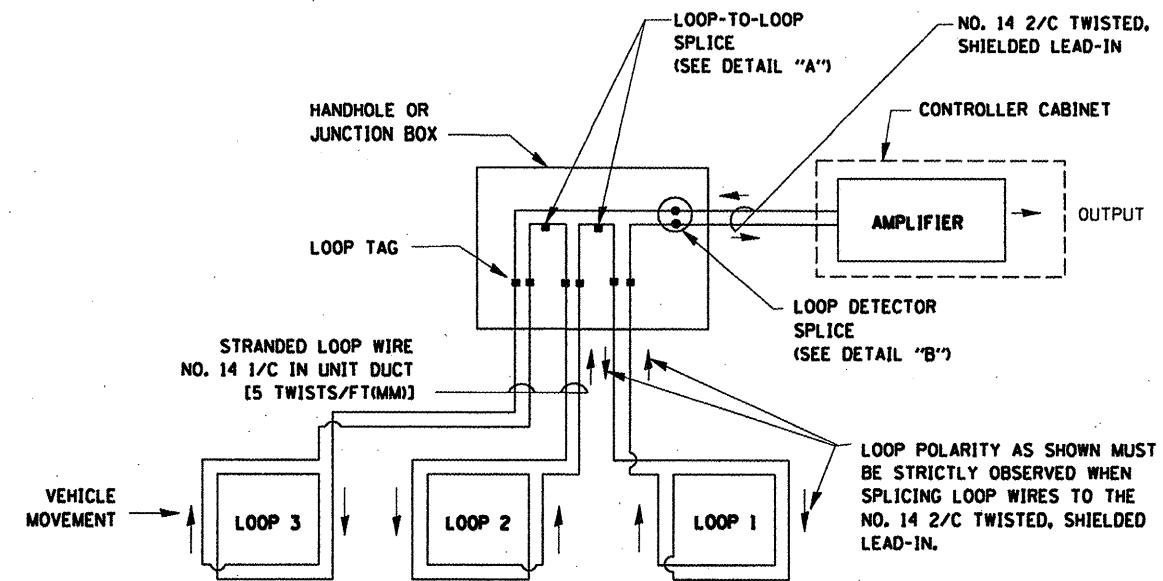
## LOOP DETECTOR NOTES

- EACH PAIR OF LOOP WIRES SHALL BE PLACED IN A SEPARATE UNIT DUCT FROM THE EDGE OF PAVEMENT TO THE HANDHOLE. SPACING BETWEEN THE HOLES DRILLED IN THE PAVEMENT SHALL NOT BE LESS THAN 6" (150 mm). UNIT DUCT SHALL BE INCLUDED IN THE COST OF THE LOOP WIRE.
- THE NUMBER OF LOOP TURNS SHALL BE AS RECOMMENDED BY THE AMPLIFIER MANUFACTURER. ALL ADJACENT SIDES OF THE LOOPS SHALL BE INSTALLED IN SUCH A WAY THAT THE CURRENT FLOW IS IN THE SAME DIRECTION TO REINFORCE ITS MAGNETIC FIELDS FOR SMALL VEHICLE DETECTION.
- EACH LOOP LEAD-IN SHALL BE IDENTIFIED AND PERMANENTLY TAGGED IN THE HANDHOLE. EACH LEAD-IN CABLE TAG SHALL INDICATE THE LOCATION OF THE LOOP, LOOP ROTATION (CLOCKWISE/COUNTERCLOCKWISE), LOOP LEAD-IN DIRECTION (IN OR OUT), LOOP CABLE NUMBER AND LOCATION IN CABINET, AND NUMBER OF TURNS IN THE DETECTOR LOOPS IN WATER PROOF INK AS INDICATED ON THE DISTRICT 1 STANDARD TRAFFIC SIGNAL DESIGN DETAIL. THE CONTRACTOR SHALL MARK LOOP LOCATIONS ON RECORD DRAWINGS AND PRESENT TO THE ENGINEER AFTER FINAL INSPECTION. LOOPS SHALL BE MARKED BY LANE AND LOOP NUMBER. SEE DETAIL BELOW.
- ALL LOOP CABLE SHALL BE FASTENED WITH PLASTIC TIE WRAP TO THE HANDHOLE HOOKS.
- IN ASPHALT PAVEMENT, LOOPS SHOULD BE PLACED IN THE BINDER AND DIVESHOLES MARKED AT THE CURB WITH A SAW-CUT. THE SAW-CUT SHALL BE CUT IN ACCORDANCE WITH LOCAL AND E.P.A. DUST CONTROL REQUIREMENTS. DETECTOR LOOP(S) SHALL NOT BE INSTALLED IN WET CONDITIONS AND THE SAW-CUTS MUST BE FREE OF DEBRIS AND RESIDUE SUCH AS DUST AND WATER WHICH IS TO BE ACHIEVED BY THE USE OF COMPRESSED AIR, WIRE BRUSHING AND HEAT DRYING ACCORDING TO SEALANT MANUFACTURER REQUIREMENTS. THE DETECTOR WIRE SHALL BE HELD IN PLACE BY THE USE OF FORM WEDGES. WEDGES SHALL BE SPACED NO MORE THAN 18" (450 mm) APART.
- LOOP SPLICES SHALL BE SOLDERED USING A SOLDERING IRON. BLOW TORCHES OR OTHER DEVICES WHICH OXIDIZE COPPER CABLE SHALL NOT BE ALLOWED FOR SOLDERING OPERATIONS. SEE DETAIL BELOW RIGHT.
- PREFORMED DETECTOR LOOPS SHALL BE USED, AS SHOWN ON THE PLANS, WHERE NEW CONCRETE PAVEMENT IS PROPOSED. THE INSTALLATION OF PREFORMED LOOPS SHALL BE IN ACCORDANCE WITH THE DISTRICT 1 SPECIFICATIONS OR AS DIRECTED BY THE ENGINEER.

### LOOP LEAD-IN CABLE TAG

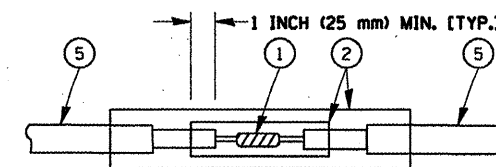


- LANE 1 IS THE LANE CLOSEST TO THE CENTERLINE OF THE ROADWAY
- LOOP #1 IS THE LOOP IN THE LANE CLOSEST TO THE INTERSECTION.
- LABEL LOOP CABLE "IN" OR LOOP CABLE "OUT".
- LABEL LOOP CABLE CLOCKWISE OR LOOP CABLE COUNTERCLOCKWISE.

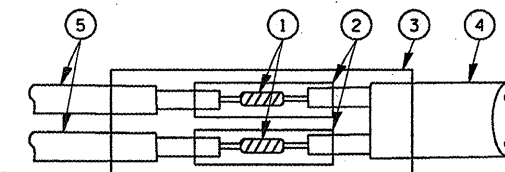


### DETECTOR LOOP WIRING SCHEMATIC

- LOOPS SHALL BE SPLICED IN SERIES.
- SAW-CUTS SHALL BE A MINIMUM WIDTH OF 5/16" (8 mm).
- SAW-CUT DEPTHS SHALL BE 3" (75 mm). IF IN CONCRETE, THE SAW-CUT DEPTH SHALL BE TO THE TOP OF THE REINFORCEMENT.
- LOOP CORNERS SHALL BE DRILLED WITH A 2" (50 mm) DIAMETER CORE.



DETAIL "A"  
LOOP-TO-LOOP SPLICE



DETAIL "B"  
LOOP-TO-CONTROLLER SPLICE

### LOOP DETECTOR SPLICE

- WESTERN UNION SPLICE SOLDERED WITH ROSIN CORE FLUX. ALL EXPOSED SURFACES OF THE SOLDER SHALL BE SMOOTH.
- WCSMW 30/100 HEAT SHRINK TUBE, MINIMUM LENGTH 3" (75 mm), UNDERWATER GRADE.
- WCS 200/750 HEAT SHRINK TUBE, MINIMUM LENGTH 6" (150 mm), UNDERWATER GRADE.
- NO. 14 2/C TWISTED, SHIELDED CABLE.
- LOOP CONDUCTOR WITH FLEXIBLE PLASTIC TUBE.

FILE NAME =	USER NAME = wilgreendp	DESIGNED - D.A.D.	REVISED - 11-12-01
c:\pwwork\p\WIDOT\WILGREENDP\d0125047\d0125047.dgn	PLT SCALE = 100.0000 "/ IN.	DRAWN - R.W.P.	REVISED - BUR, TRAFFIC 01-01-02
	DATE = 5/18/2009	CHECKED - D.A.Z.	REVISED -
		DATE - 05-30-00	REVISED -

STATE OF ILLINOIS  
DEPARTMENT OF TRANSPORTATION

DISTRICT ONE STANDARD TRAFFIC SIGNAL DESIGN DETAILS			
SCALE: NONE	SHEET NO. 1 OF 4 SHEETS	STA.	TO STA.

F.A. RTE.	SECTION	COUNTY	TOTAL SHEETS	SHEET NO.
VAR. 2009-0599cc-PP	TS-05	COOK	18	18
FED. ROAD DIST. NO. 1 (ILLINOIS) FED. AID PROJECT			CONTRACT NO. 601150	