

INDEX OF SHEETS

FOR INDEX OF SHEETS, SEE SHEET NO. 2

| DAN RYAN EXPRESSWAY: | ADT (2010) | DESIGN SPEED | POSTED SPEED |
|----------------------------------|------------|--------------|--------------|
| NB I-94 (DAN RYAN) | 151,800 | 60 MPH | 55 MPH |
| NB I-57 | 57,300 | 60 MPH | 55 MPH |
| NB 87TH STREET ENTRANCE RAMP | 14,300 | 45 MPH | 45 MPH |
| NB 83RD STREET C-D ENTRANCE RAMP | 8,100 | 45 MPH | 45 MPH |

MAJOR CROSS STREETS AND FRONTAGE ROADS:

| | ADT | POSTED SPEED |
|-----------------|--------|--------------|
| 87TH STREET | 21,900 | 30 MPH |
| 83RD STREET | 13,700 | 30 MPH |
| S. STATE STREET | 15,100 | 30 MPH |

DESCRIPTION OF PROJECT

CONSTRUCTION OF FLUTED KNEE WALLS AND LIGHT TOWER SERVICE PAD LOCATED WITHIN THE PROJECT LIMITS

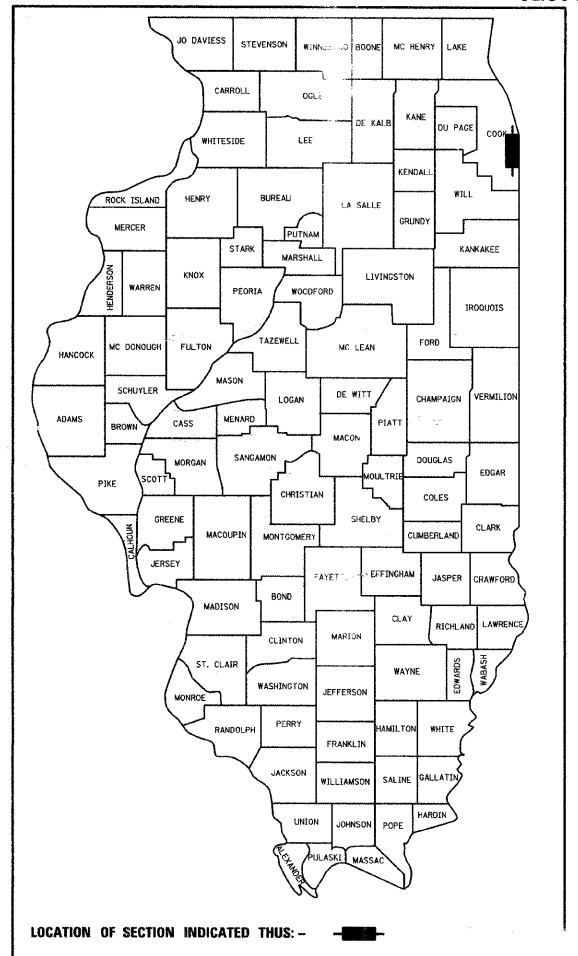
**STATE OF ILLINOIS
DEPARTMENT OF TRANSPORTATION
DIVISION OF HIGHWAYS**

PROPOSED HIGHWAY PLANS

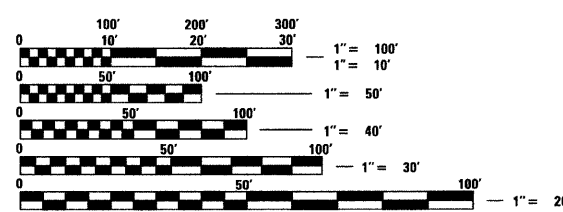
**F.A.I. ROUTE 94 (DAN RYAN EXPRESSWAY)
SECTION 1717 I-6
FLUTED KNEE WALL CONSTRUCTION
ALONG STATE STREET FROM 86TH STREET TO 83RD STREET
COOK COUNTY
C-91-231-05**

| F.A.I. RTE. | SECTION | COUNTY | TOTAL SHEETS | SHEET NO. |
|-------------|----------|--------|--------------|-----------|
| 94 | 1717 I-6 | COOK | 60 | 1 |

FED. ROAD DIST. NO. ILLINOIS FED. AID PROJECT D-91-231-05 62973



PROJECT LOCATED IN THE CITY OF CHICAGO

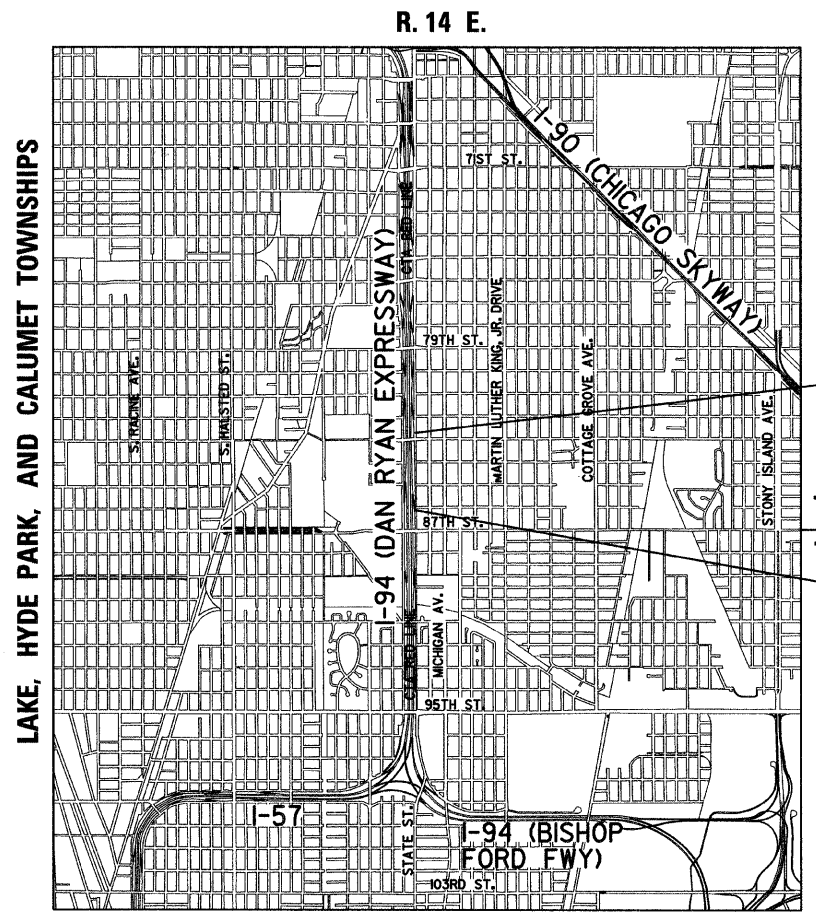


FULL SIZE PLANS HAVE BEEN PREPARED USING STANDARD ENGINEERING SCALES; REDUCED SIZED PLANS WILL NOT CONFORM TO STANDARD SCALES. IN MAKING MEASUREMENTS ON REDUCED PLANS, THE ABOVE SCALES MAY BE USED

DIGGER:
CHICAGO UTILITY ALERT NETWORK
(312) 744-7000

CTA CONTACT:
DAVID HEARD,
MANAGER, CONSTRUCTION
MANAGEMENT OVERSIGHT
(312) 681-3862

CONTRACT NO. 62973



LOCATION MAP

MAP SCALE: 1" = 1/2 MILE
GROSS LENGTH OF PROJECT = 2188.64 FT. = 0.41 MI.
NET LENGTH OF PROJECT = 2188.64 FT. = 0.41 MI.

F.A.I. 94 (RYAN) PROJECT LIMIT
STA. 2287 + 21.27 (NB I-94)

F.A.I. 94 (RYAN) PROJECT LIMIT
STA. 2265 + 32.63 (NB I-94)

**STATE OF ILLINOIS
DEPARTMENT OF TRANSPORTATION
DIVISION OF HIGHWAYS**

SUBMITTED October 9, 2008

Deane M. O'Keefe, Jr.
DEPUTY DIRECTOR OF HIGHWAYS, REGION ENGINEER

June 26, 2009
Charles J. Ingersoll, P.E.
ENGINEER OF DESIGN AND ENVIRONMENT

June 26, 2009
Christine M. Reed, P.E.
DIRECTOR OF HIGHWAYS, CHIEF ENGINEER

CONTRACT 25D

Signed Dean A. Kiesling
Date October 7, 2008

32957 REGISTERED PROFESSIONAL ENGINEER OF ILLINOIS
Expires 11-30-2009

DISTRICT ONE DESIGN / PROJECT MANAGER:
BRIAN KUTTAB (847) 705 - 4431