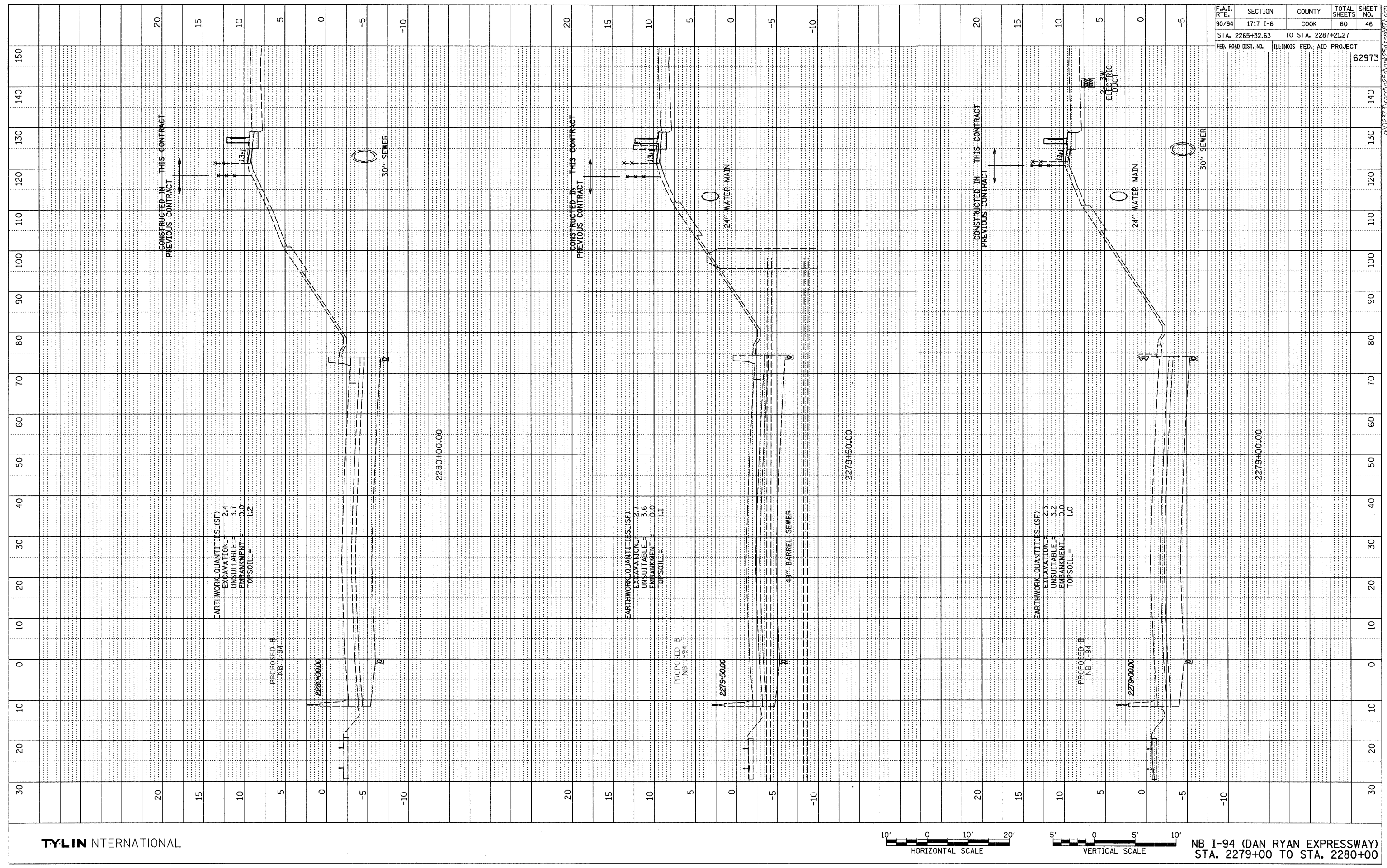
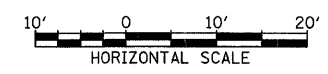


PROFILE	SURVEYED	BY	DATE
NOTE BOOK	PAID FOR		
NO.	BY		
	STRUCTURE	NOTATIONS	CHRD



F.A.I. RTE.	SECTION	COUNTY	TOTAL SHEETS	SHEET NO.
90/94	1717 I-6	COOK	60	46
STA. 2265+32.63		TO STA. 2287+21.27		
FED. ROAD DIST. NO.	ILLINOIS FED. AID PROJECT			
				62973

TYLIN INTERNATIONAL



NB I-94 (DAN RYAN EXPRESSWAY)
STA. 2279+00 TO STA. 2280+00