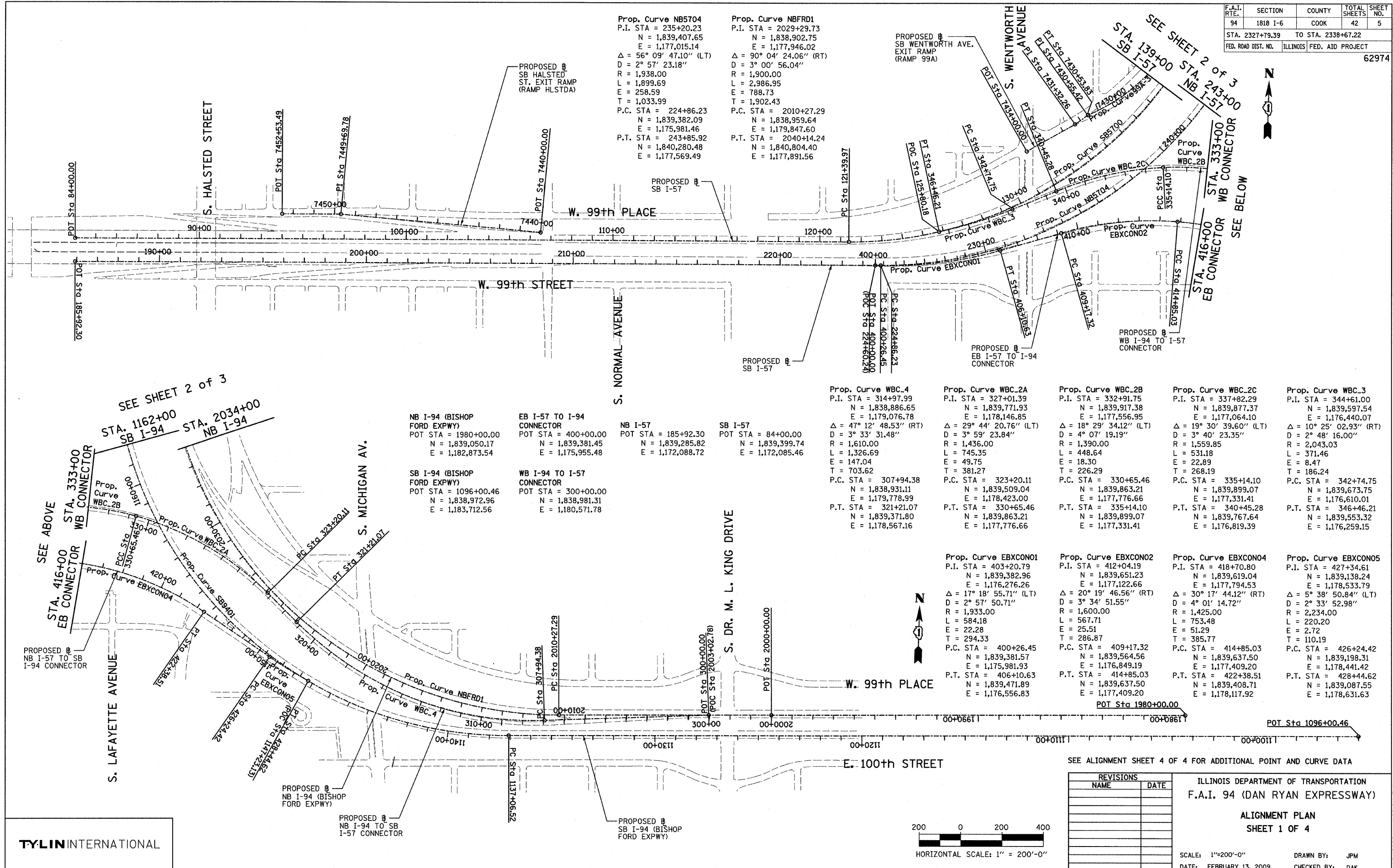


F.A.I. RTE.	SECTION	COUNTY	TOTAL SHEETS	SHEET NO.
94	1818 I-6	COOK	42	5
STA. 2327+79.39		TO STA. 2338+67.22		
FED. ROAD DIST. NO.		ILLINOIS FED. AID PROJECT		62974



Prop. Curve NB5704  
 P.I. STA = 235+20.23  
 N = 1,839,407.65  
 E = 1,177,015.14  
 $\Delta = 56^\circ 09' 47.10''$  (LT)  
 D = 2° 57' 23.18"  
 R = 1,938.00  
 L = 1,899.69  
 E = 258.59  
 T = 1,033.99  
 P.C. STA = 224+86.23  
 N = 1,839,382.09  
 E = 1,175,981.46  
 P.T. STA = 243+85.92  
 N = 1,840,280.48  
 E = 1,177,569.49

Prop. Curve NBF8D1  
 P.I. STA = 2029+29.73  
 N = 1,838,902.75  
 E = 1,177,946.02  
 $\Delta = 90^\circ 04' 24.06''$  (RT)  
 D = 3° 00' 56.04"  
 R = 1,900.00  
 L = 2,986.95  
 E = 788.73  
 T = 1,902.43  
 P.C. STA = 2010+27.29  
 N = 1,838,959.64  
 E = 1,179,847.60  
 P.T. STA = 2040+14.24  
 N = 1,840,804.40  
 E = 1,177,891.56

NB I-94 (BISHOP FORD EXPWY)  
 POT STA = 1980+00.00  
 N = 1,839,050.17  
 E = 1,182,873.54

EB I-57 TO I-94 CONNECTOR  
 POT STA = 400+00.00  
 N = 1,839,381.45  
 E = 1,175,955.48

NB I-57  
 POT STA = 185+92.30  
 N = 1,839,285.82  
 E = 1,172,088.72

SB I-57  
 POT STA = 84+00.00  
 N = 1,839,399.74  
 E = 1,172,085.46

SB I-94 (BISHOP FORD EXPWY)  
 POT STA = 1096+00.46  
 N = 1,838,972.96  
 E = 1,183,712.56

WB I-94 TO I-57 CONNECTOR  
 POT STA = 300+00.00  
 N = 1,838,981.31  
 E = 1,180,571.78

Prop. Curve WBC\_4  
 P.I. STA = 314+97.99  
 N = 1,838,886.65  
 E = 1,179,076.78  
 $\Delta = 47^\circ 12' 48.53''$  (RT)  
 D = 3° 33' 31.48"  
 R = 1,610.00  
 L = 1,326.69  
 E = 147.04  
 T = 703.62  
 P.C. STA = 307+94.38  
 N = 1,838,931.11  
 E = 1,179,778.99  
 P.T. STA = 321+21.07  
 N = 1,839,371.80  
 E = 1,178,567.16

Prop. Curve WBC\_2A  
 P.I. STA = 327+01.39  
 N = 1,839,771.93  
 E = 1,178,146.85  
 $\Delta = 29^\circ 44' 20.76''$  (LT)  
 D = 3° 59' 23.84"  
 R = 1,436.00  
 L = 745.35  
 E = 49.75  
 T = 381.27  
 P.C. STA = 323+20.11  
 N = 1,839,509.04  
 E = 1,178,423.00  
 P.T. STA = 330+65.46  
 N = 1,839,863.21  
 E = 1,177,776.66

Prop. Curve WBC\_2B  
 P.I. STA = 332+91.75  
 N = 1,839,917.38  
 E = 1,177,556.95  
 $\Delta = 18^\circ 29' 34.12''$  (LT)  
 D = 4° 07' 19.19"  
 R = 1,390.00  
 L = 448.64  
 E = 18.30  
 T = 226.29  
 P.C. STA = 330+65.46  
 N = 1,839,863.21  
 E = 1,177,776.66  
 P.T. STA = 335+14.10  
 N = 1,839,899.07  
 E = 1,177,331.41

Prop. Curve WBC\_2C  
 P.I. STA = 337+82.29  
 N = 1,839,877.37  
 E = 1,177,064.10  
 $\Delta = 19^\circ 30' 39.60''$  (LT)  
 D = 3° 40' 23.35"  
 R = 1,559.85  
 L = 531.18  
 E = 22.89  
 T = 268.19  
 P.C. STA = 335+14.10  
 N = 1,839,899.07  
 E = 1,177,331.41  
 P.T. STA = 340+45.28  
 N = 1,839,767.64  
 E = 1,176,819.39

Prop. Curve WBC\_3  
 P.I. STA = 344+61.00  
 N = 1,839,597.54  
 E = 1,176,440.07  
 $\Delta = 10^\circ 25' 02.93''$  (RT)  
 D = 2° 48' 16.00"  
 R = 2,043.03  
 L = 371.46  
 E = 8.47  
 T = 186.24  
 P.C. STA = 342+74.75  
 N = 1,839,673.75  
 E = 1,176,610.01  
 P.T. STA = 346+46.21  
 N = 1,839,553.32  
 E = 1,176,259.15

Prop. Curve EBXC0N01  
 P.I. STA = 403+20.79  
 N = 1,839,651.23  
 E = 1,177,122.66  
 $\Delta = 17^\circ 18' 55.71''$  (LT)  
 D = 2° 57' 50.71"  
 R = 1,933.00  
 L = 584.18  
 E = 22.28  
 T = 294.33  
 P.C. STA = 400+26.45  
 N = 1,839,381.57  
 E = 1,175,981.93  
 P.T. STA = 406+10.63  
 N = 1,839,471.89  
 E = 1,176,556.83

Prop. Curve EBXC0N02  
 P.I. STA = 412+04.19  
 N = 1,839,651.23  
 E = 1,177,122.66  
 $\Delta = 20^\circ 19' 46.56''$  (RT)  
 D = 3° 34' 51.55"  
 R = 1,600.00  
 L = 567.71  
 E = 25.51  
 T = 286.87  
 P.C. STA = 409+17.32  
 N = 1,839,564.56  
 E = 1,176,849.19  
 P.T. STA = 414+85.03  
 N = 1,839,637.50  
 E = 1,177,409.20

Prop. Curve EBXC0N04  
 P.I. STA = 418+70.80  
 N = 1,839,619.04  
 E = 1,177,794.53  
 $\Delta = 30^\circ 17' 44.12''$  (RT)  
 D = 4° 01' 14.72"  
 R = 1,425.00  
 L = 753.48  
 E = 51.29  
 T = 385.77  
 P.C. STA = 414+85.03  
 N = 1,839,637.50  
 E = 1,177,409.20  
 P.T. STA = 422+38.51  
 N = 1,839,408.71  
 E = 1,178,117.92

Prop. Curve EBXC0N05  
 P.I. STA = 427+34.61  
 N = 1,839,138.24  
 E = 1,178,533.79  
 $\Delta = 5^\circ 38' 50.84''$  (LT)  
 D = 2° 33' 52.98"  
 R = 2,234.00  
 L = 220.20  
 E = 2.72  
 T = 110.19  
 P.C. STA = 426+24.42  
 N = 1,839,198.31  
 E = 1,178,441.42  
 P.T. STA = 428+44.62  
 N = 1,839,087.55  
 E = 1,178,631.63

SEE SHEET 2 of 3  
 STA. 1162+00  
 SB I-94

STA. 2034+00  
 NB I-94

SEE ABOVE  
 STA. 333+00  
 WB CONNECTOR

STA. 416+00  
 EB CONNECTOR

SEE ALIGNMENT SHEET 4 OF 4 FOR ADDITIONAL POINT AND CURVE DATA

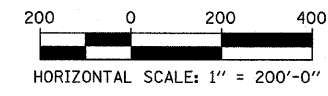
REVISIONS	
NAME	DATE

ILLINOIS DEPARTMENT OF TRANSPORTATION  
 F.A.I. 94 (DAN RYAN EXPRESSWAY)

ALIGNMENT PLAN  
 SHEET 1 OF 4

SCALE: 1"=200'-0"  
 DATE: FEBRUARY 13, 2009

DRAWN BY: JPM  
 CHECKED BY: DAK



TYLIN INTERNATIONAL

3/19/2009 1:20:04 PM