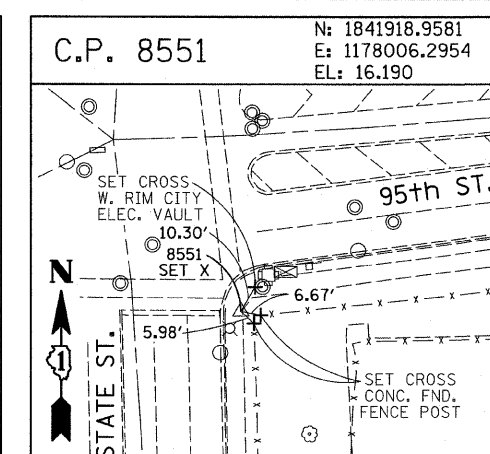
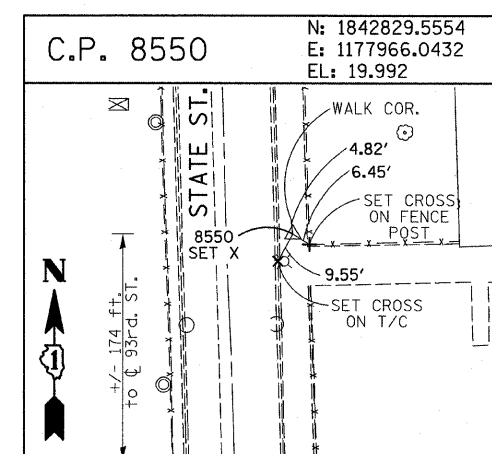
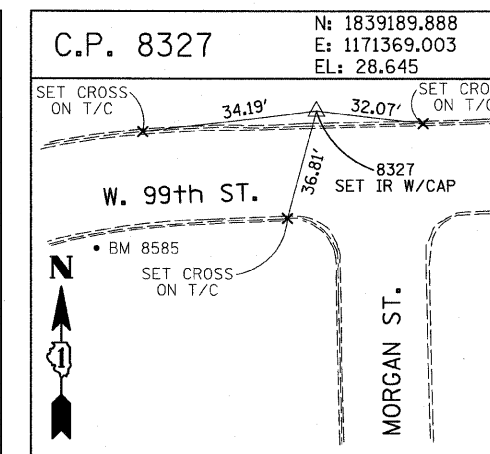
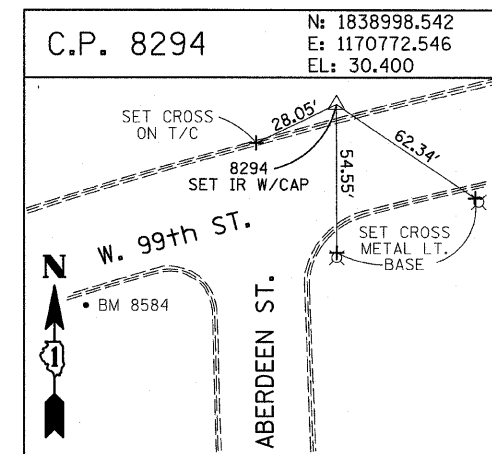
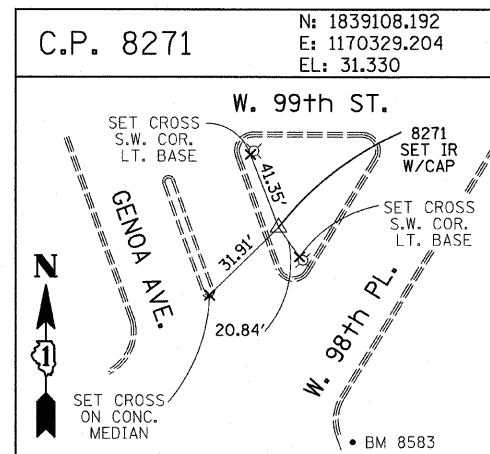
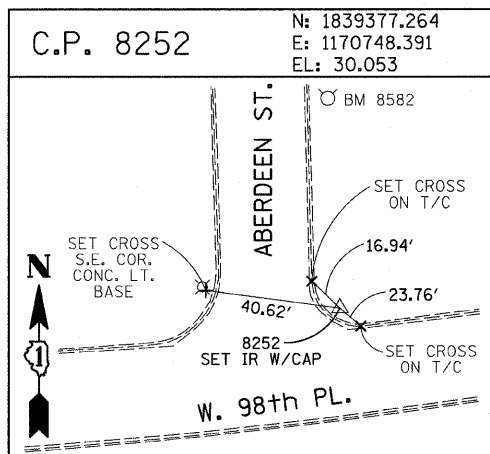
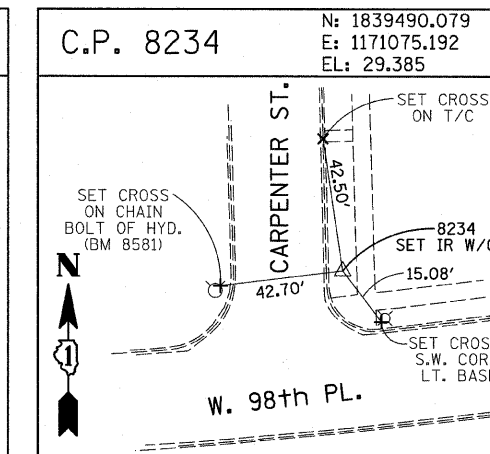
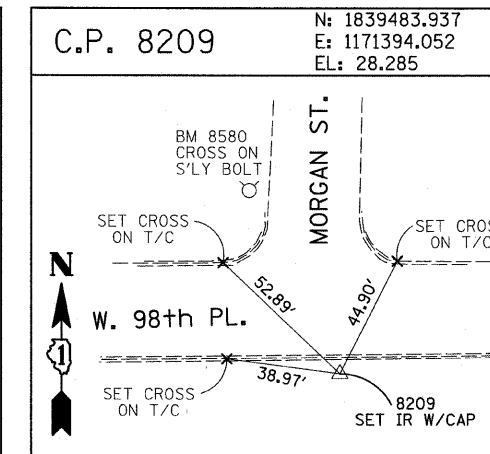
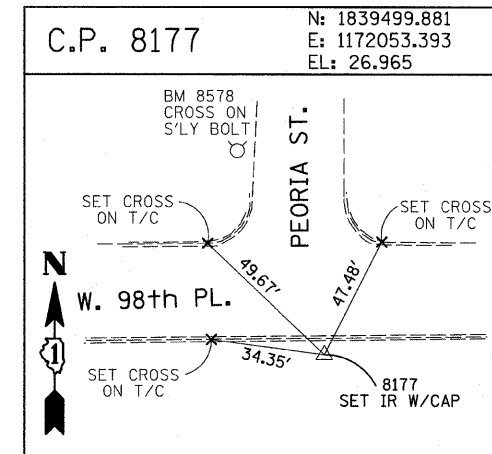
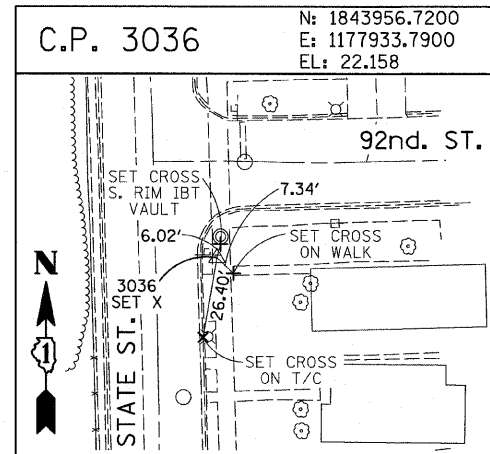
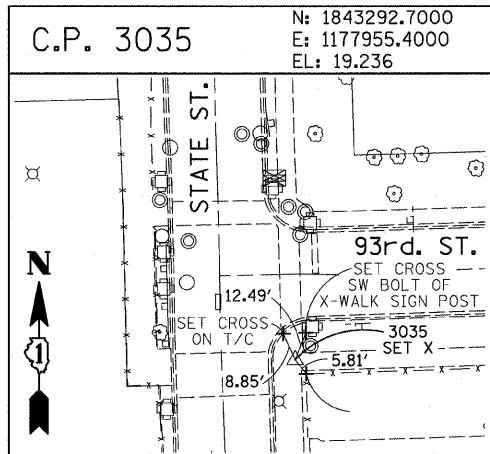
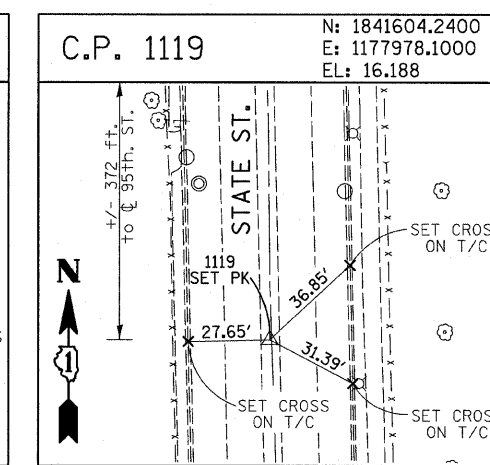
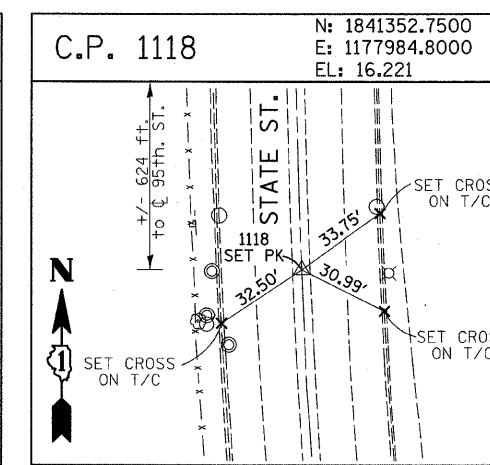
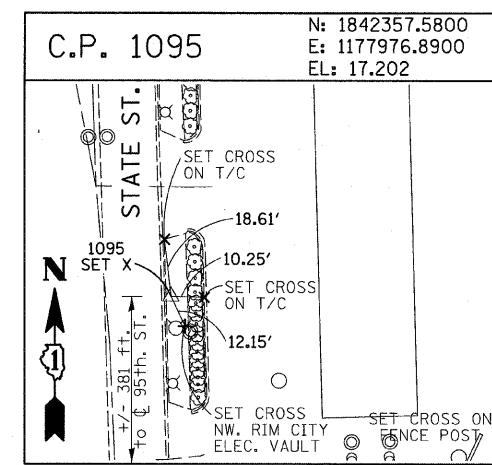
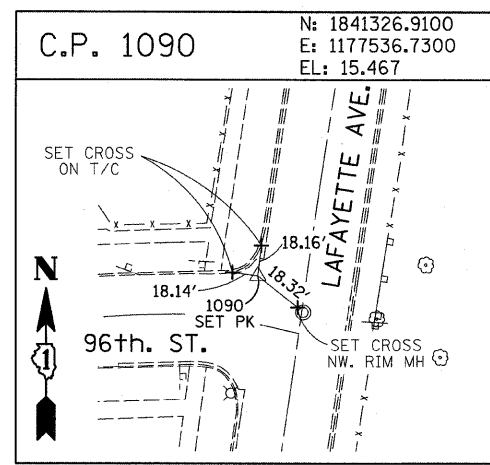
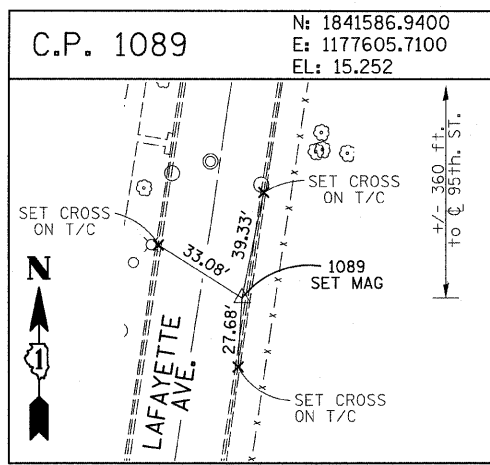


F.A.I. RTE.	SECTION	COUNTY	TOTAL SHEETS	SHEET NO.
94	1818 1-6	COOK	42	14
STA. 2327+79.39		TO STA. 2338+67.22		
FED. ROAD DIST. NO.	ILLINOIS	FED. AID PROJECT	62974	



American Surveying Consultants, P.C.  
 1837 Pike Bl. #200, St. Louis, MO 63103  
 314-241-2222

REVISIONS	
NAME	DATE

ILLINOIS DEPARTMENT OF TRANSPORTATION  
 F.A.I. 94 (DAN RYAN EXPRESSWAY)  
 SURVEY TIES FOR CONTROL POINTS  
 SHEET 6 OF 7  
 SCALE: 1"=30'  
 DATE: FEBRUARY 13, 2009  
 DRAWN BY: GSP  
 CHECKED BY: MMW

3/19/2009 1:28:45 PM