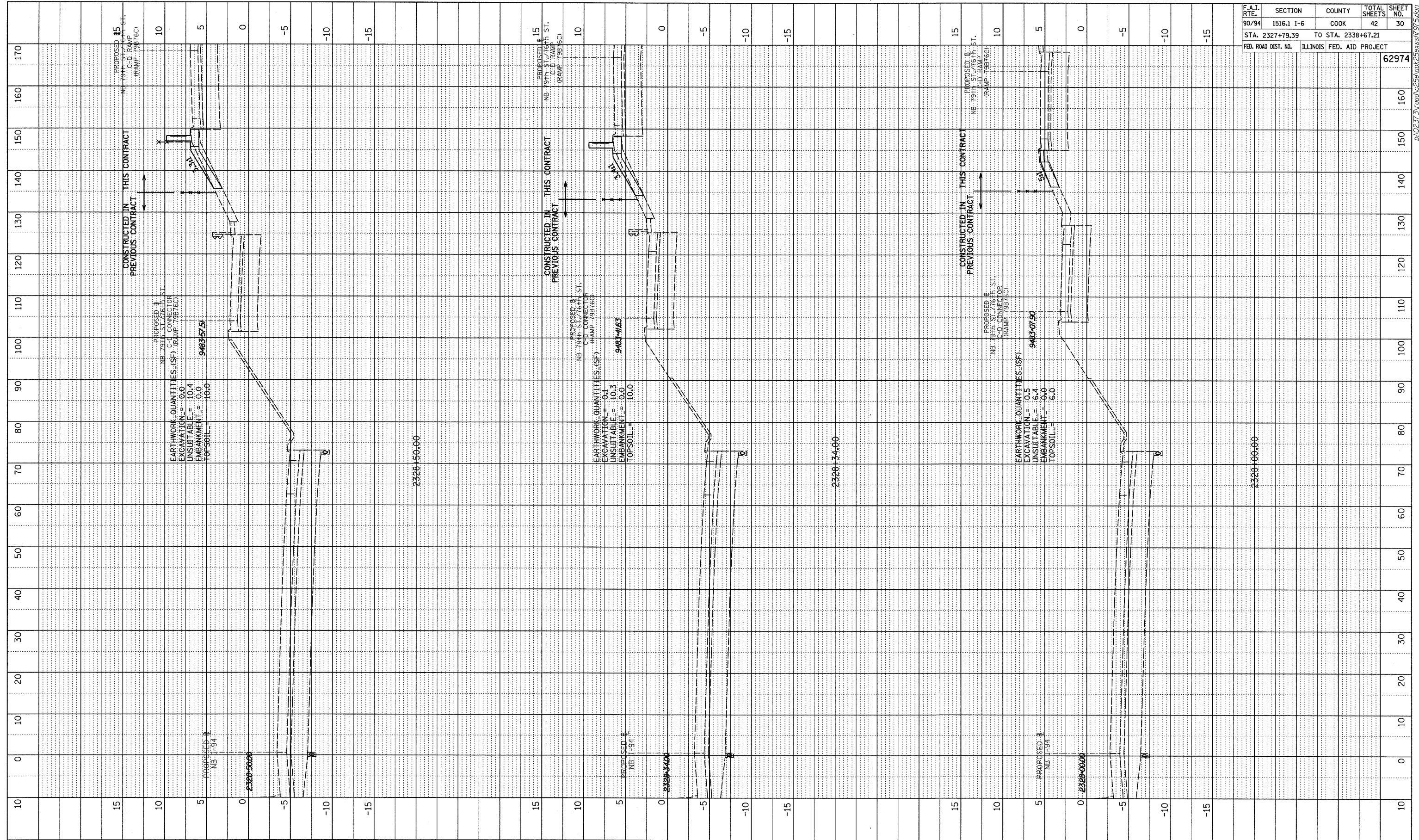


PROFILE SURVEYED BY DATE
 GRADES CHECKED
 ELEV. NOTED
 NO. STRUCTURE NOTATIONS CHECKED



F.A.I. RTE.	SECTION	COUNTY	TOTAL SHEETS	SHEET NO.
90/94	1516.1 I-6	COOK	42	30
STA. 2327+79.39		TO STA. 2338+67.21		
FED. ROAD DIST. NO.		ILLINOIS FED. AID PROJECT		
				62974

TYLIN INTERNATIONAL



NB I-94 (DAN RYAN EXPRESSWAY)
 STA. 2328+00 TO STA. 2328+50