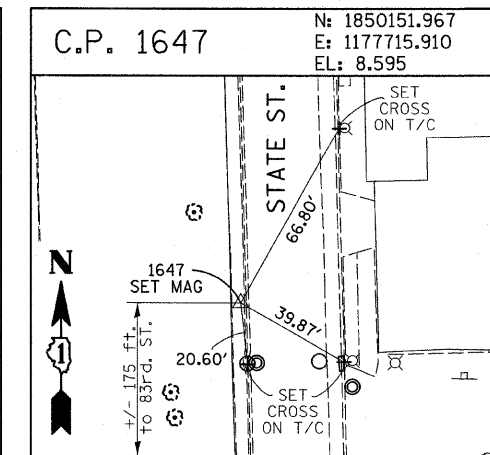
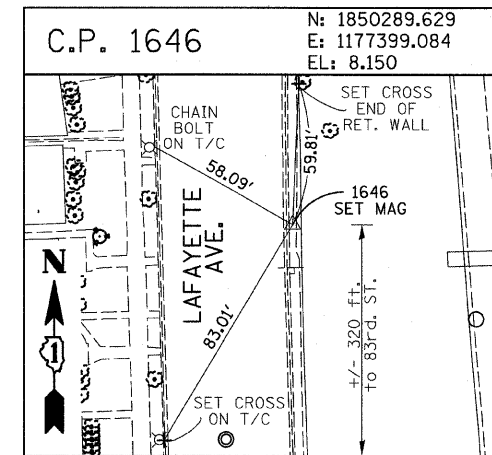
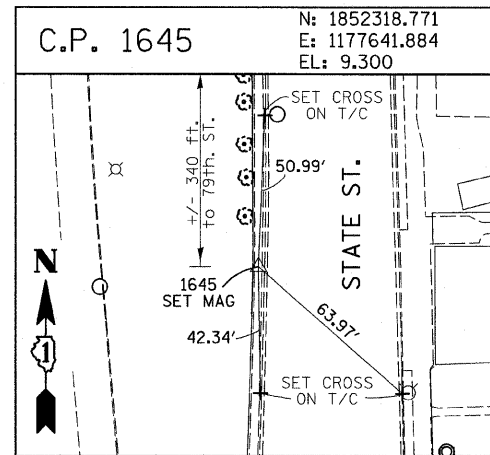
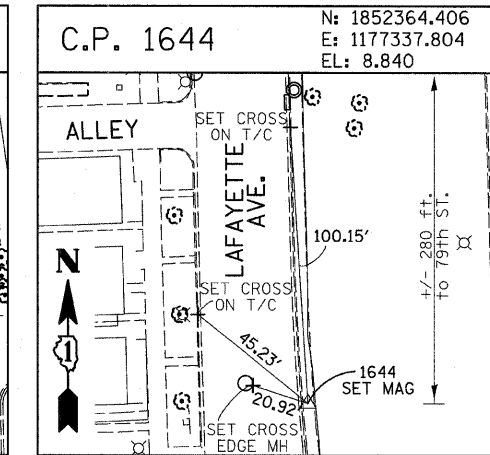
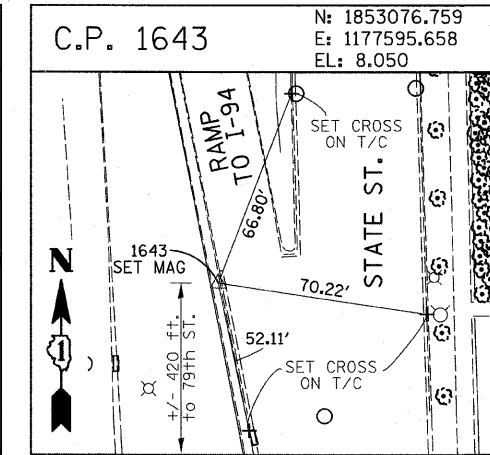
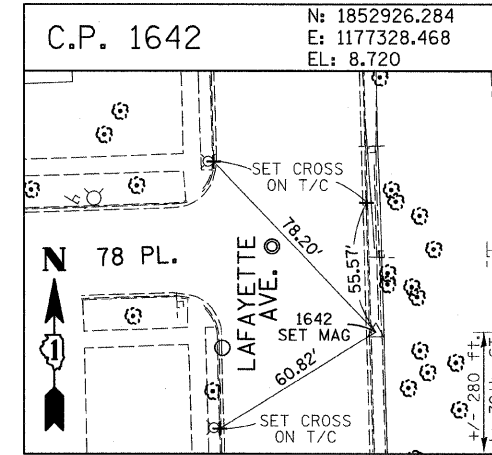
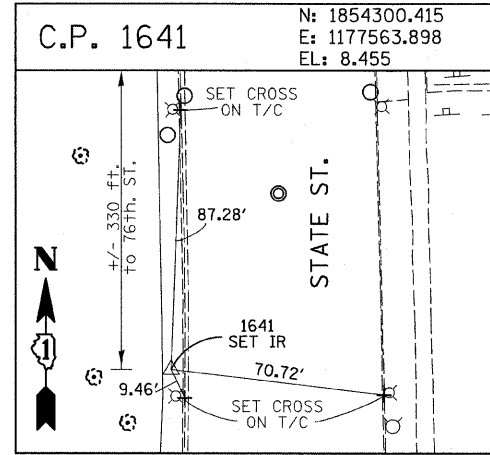
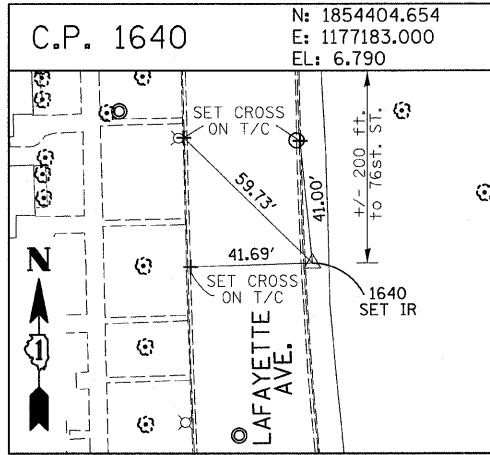
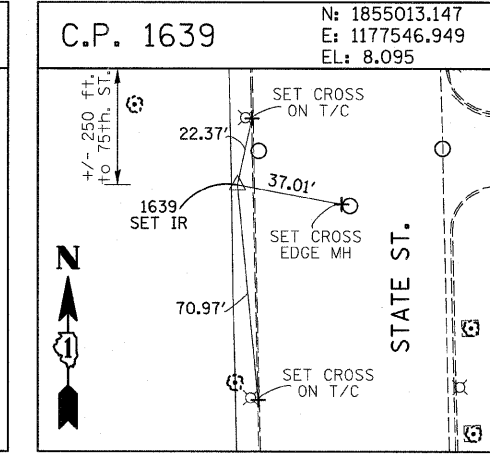
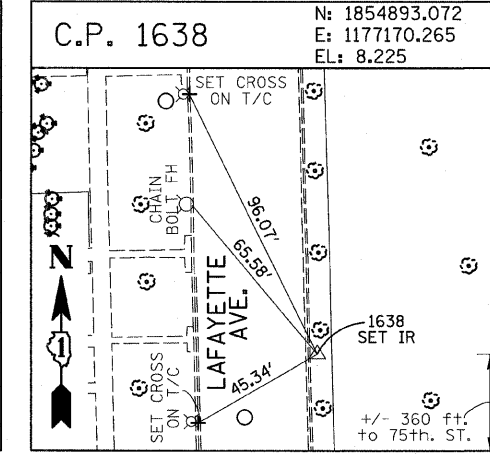
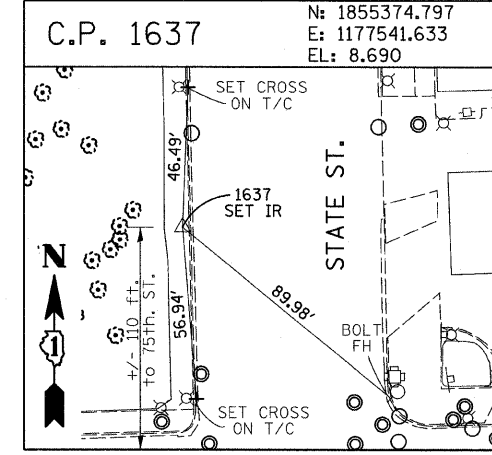
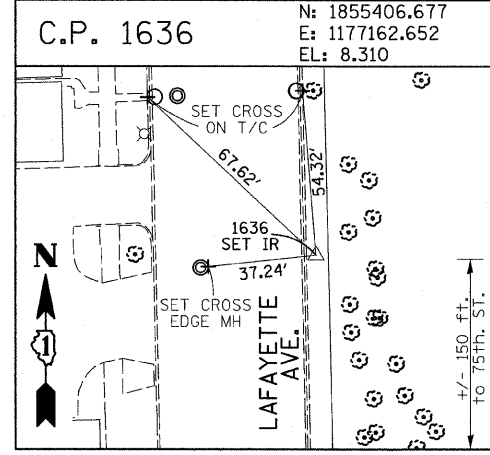
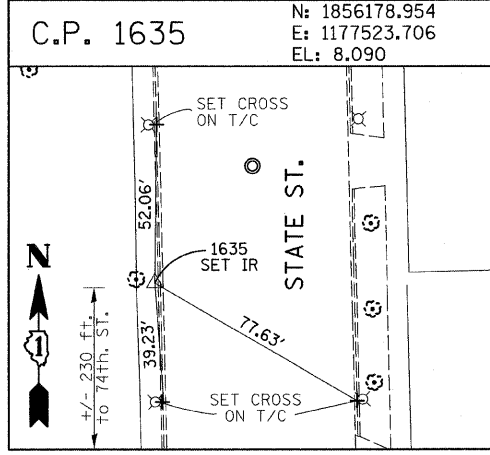
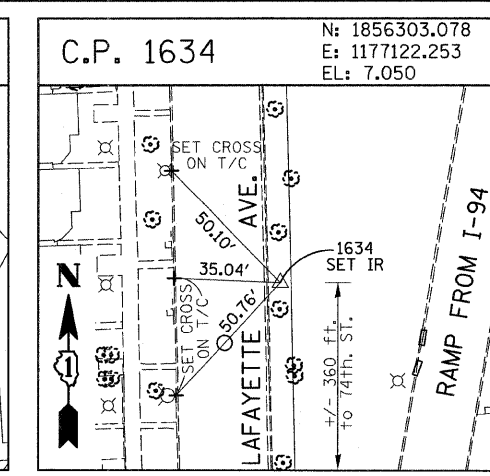
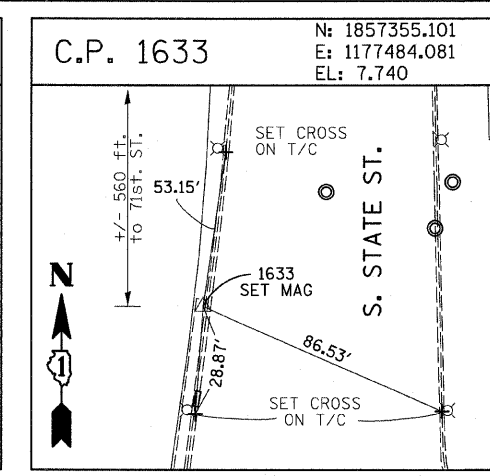
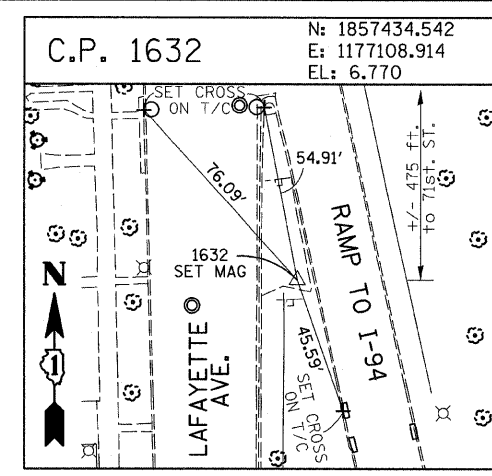
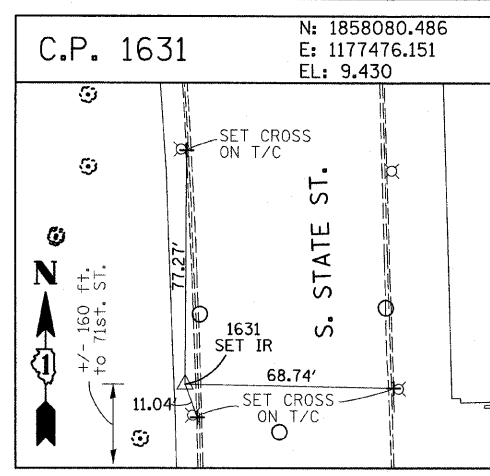
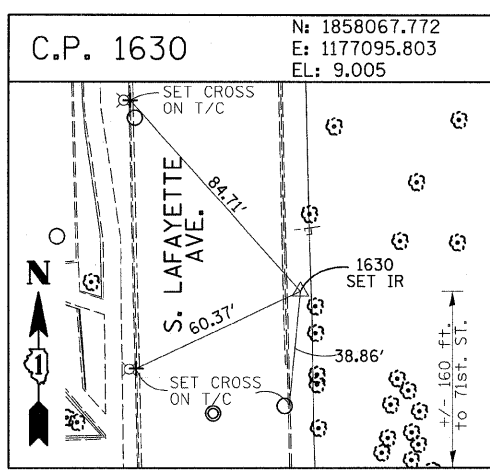


| F.A.I. RTE. | SECTION | COUNTY | TOTAL SHEETS | SHEET NO. |
|---------------------|----------|---------------------------|--------------|-----------|
| 94 | 1717 I-9 | COOK | 48 | 12 |
| STA. 1273+74.31 | | TO STA. 1289+11.91 | | |
| FED. ROAD DIST. NO. | | ILLINOIS FED. AID PROJECT | | |
| 62980 | | | | |



American Surveying Consultants, P.C.
 1437 Park St., Chicago, IL 60611 606 N. Northwest Highway, Chicago, IL 60611

| REVISIONS | |
|-----------|------|
| NAME | DATE |
| | |
| | |
| | |
| | |
| | |

ILLINOIS DEPARTMENT OF TRANSPORTATION
 F.A.I. 94 (DAN RYAN EXPRESSWAY)
 SURVEY TIES FOR CONTROL POINTS
 SHEET 3 OF 7
 SCALE: 1"=30'
 DATE: OCTOBER 17, 2008
 DRAWN BY: GSP
 CHECKED BY: MMW

10/16/2008 4:38:24 PM