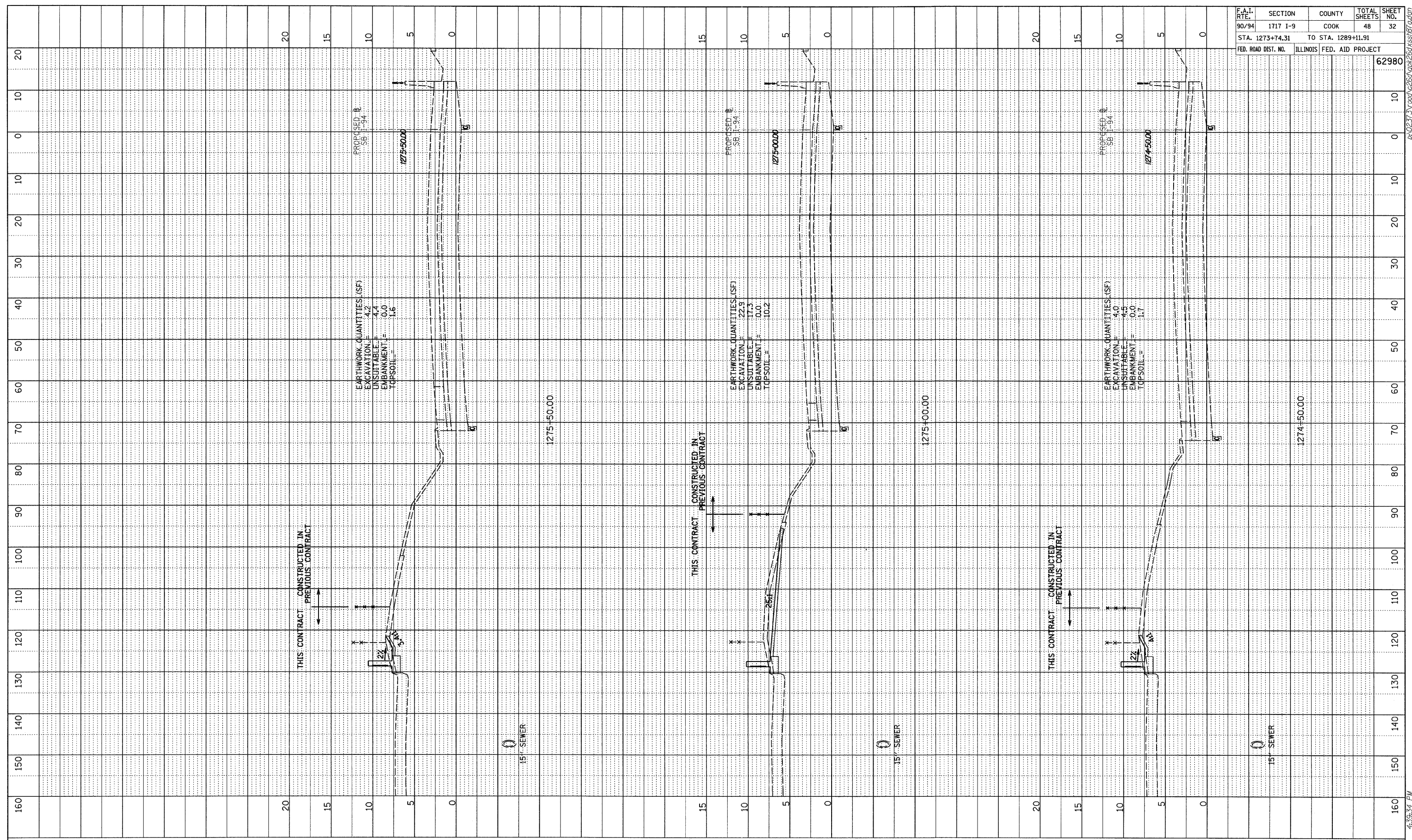
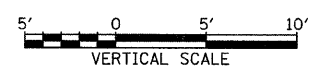
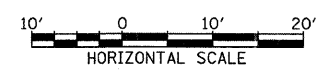


PROFILE	SURVEYED	BY	DATE
NOTE BOOK	CHANGES CHECKED		
NO.	B.M. NOTED		
	STRUCTURE NOTATIONS CIPED		



F.A.I. RTE.	SECTION	COUNTY	TOTAL SHEETS	SHEET NO.
90/94	1717 I-9	COOK	48	32
STA. 1273+74.31		TO STA. 1289+11.91		
FED. ROAD DIST. NO.	ILLINOIS	FED. AID PROJECT		
		62980		

TYLIN INTERNATIONAL



SB I-94 (DAN RYAN EXPRESSWAY)
STA. 1274+50 TO STA. 1275+50

10/15/2008 4:35:34 PM P:\0237\3\road\266\gpk266\sb1\road