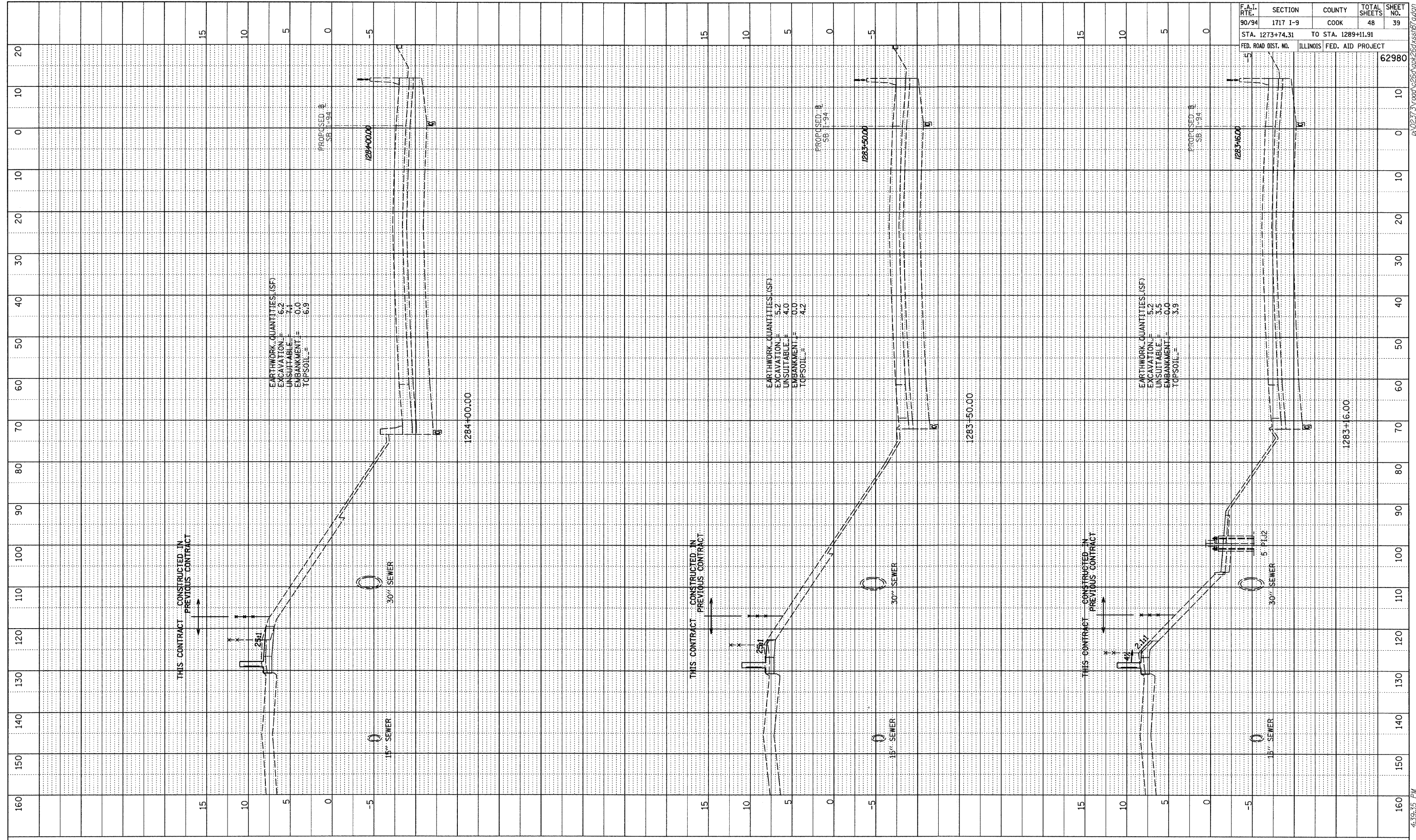
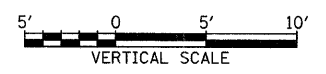
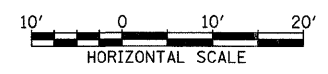


PROFILE	SUPERVIEW	BY	DATE
NOTE BOOK	GRADES CHECKED		
	BLM. NOTED		
	STRUCTURE NOTATIONS CPMO		



F.A.I. RTE.	SECTION	COUNTY	TOTAL SHEETS	SHEET NO.
90/94	1717 I-9	COOK	48	39
STA. 1273+74.31		TO STA. 1289+11.91		
FED. ROAD DIST. NO.	ILLINOIS FED. AID PROJECT			
				62980

TYLIN INTERNATIONAL



SB I-94 (DAN RYAN EXPRESSWAY)  
STA. 1283+16 TO STA. 1284+00

10/16/2008 4:39:15 PM