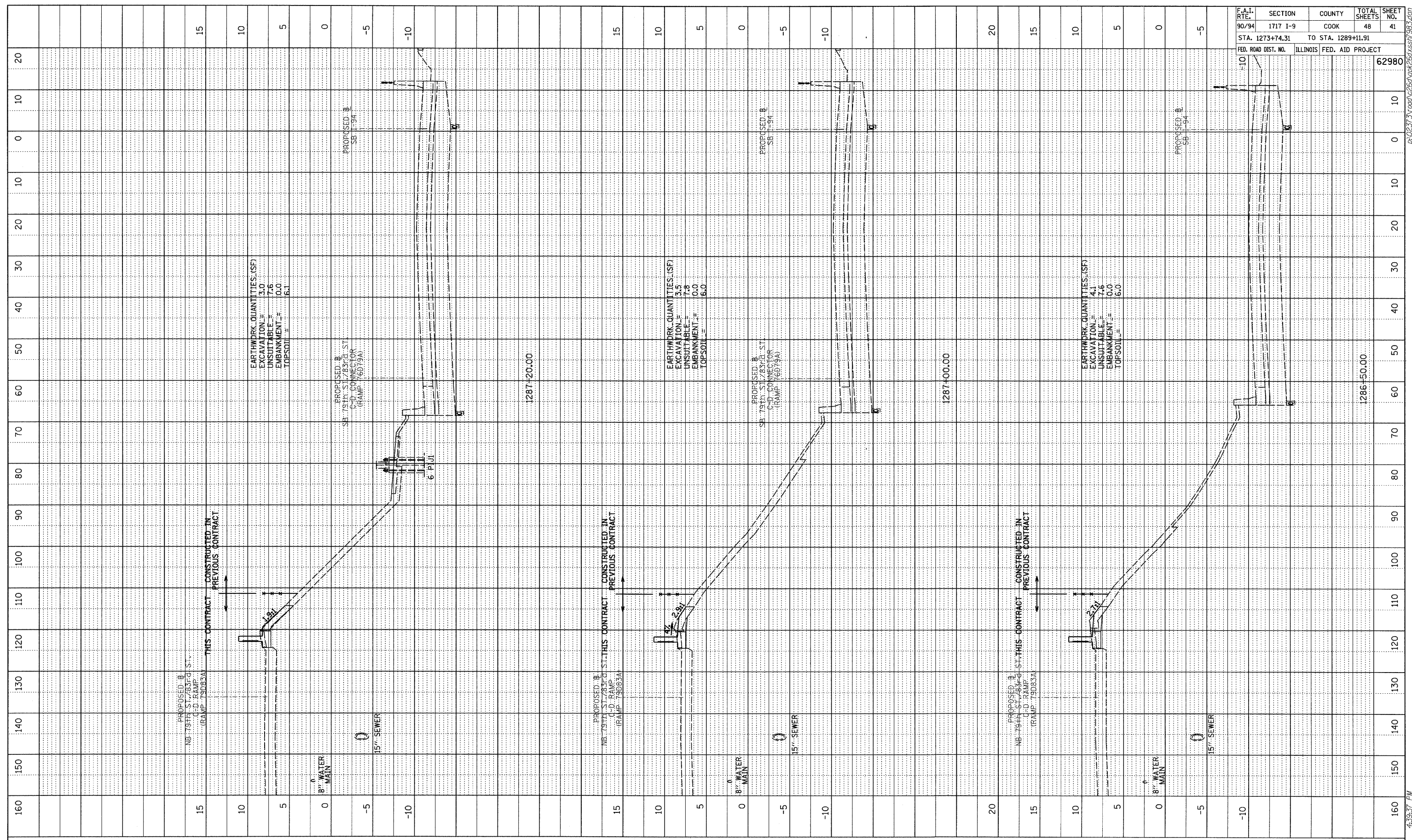
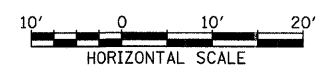


PROFILE SURVEYED  
 GRADES CHECKED  
 NOTE BOOK NO. NOTED  
 STRUCTURE NOTATIONS CROD  
 BY: \_\_\_\_\_ DATE: \_\_\_\_\_



F.A.I. RTE.	SECTION	COUNTY	TOTAL SHEETS	SHEET NO.
90/94	1717 I-9	COOK	48	41
STA. 1273+74.31		TO STA. 1289+11.91		
FED. ROAD DIST. NO.	ILLINOIS	FED. AID PROJECT		62980

TYLIN INTERNATIONAL



SB I-94 (DAN RYAN EXPRESSWAY)  
STA. 1286+50 TO STA. 1287+20

10/15/2008 4:39:37 PM P:\0231\1000\260\260.dwg(260)SSB\933.dwg