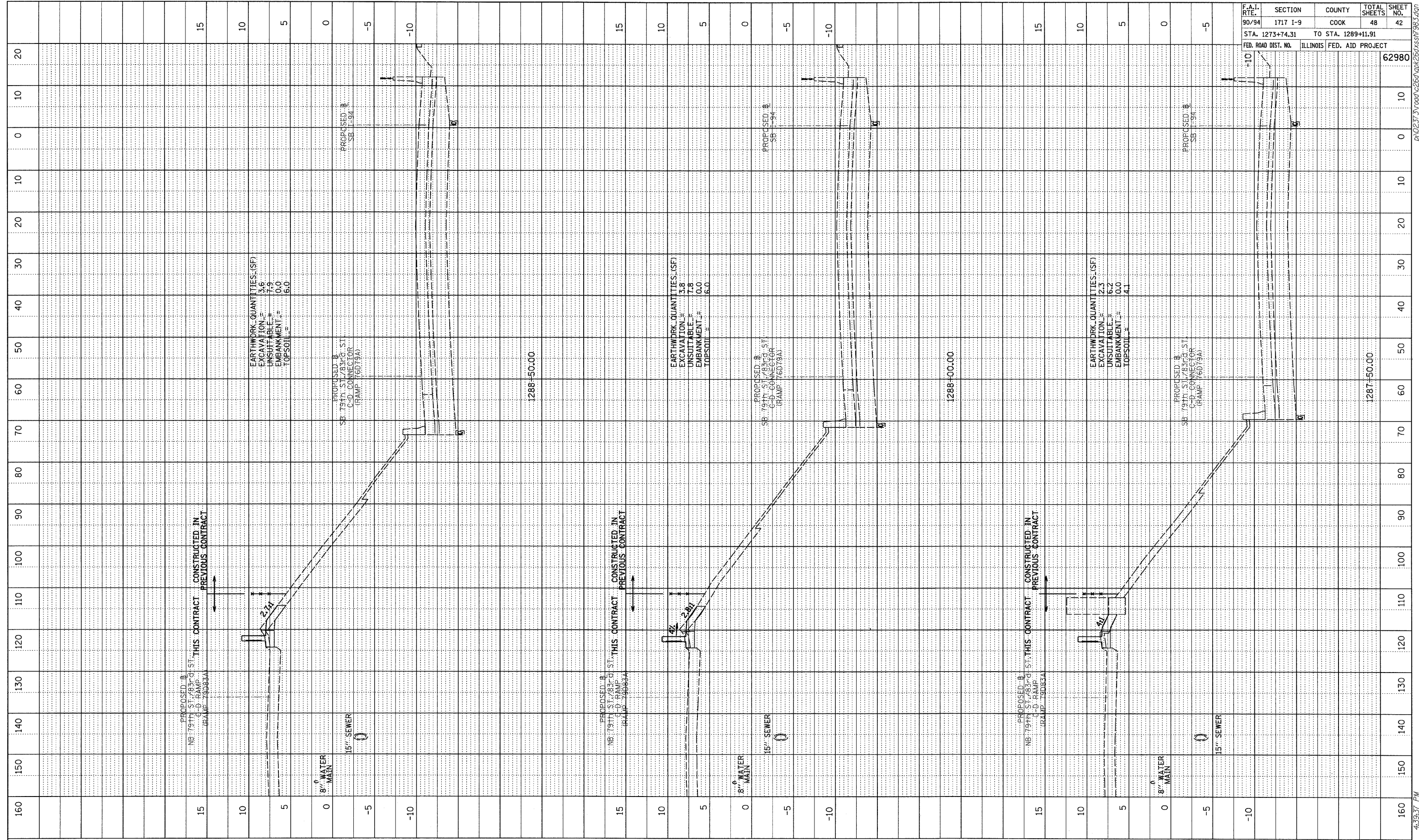
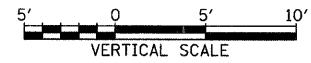


PROFILE SURVEYED BY DATE
 CHECKED BY
 NOTE BOOK NO. STRUCTURE NOTATIONS DRPD



F.A.I. RTE.	SECTION	COUNTY	TOTAL SHEETS	SHEET NO.
90/94	1717 I-9	COOK	48	42
STA. 1273+74.31		TO STA. 1289+11.91		
FED. ROAD DIST. NO.	ILLINOIS	FED. AID PROJECT		
			62980	

TYLIN INTERNATIONAL



SB I-94 (DAN RYAN EXPRESSWAY)
 STA. 1287+50 TO STA. 1288+50

10/16/2008 4:39:37 PM