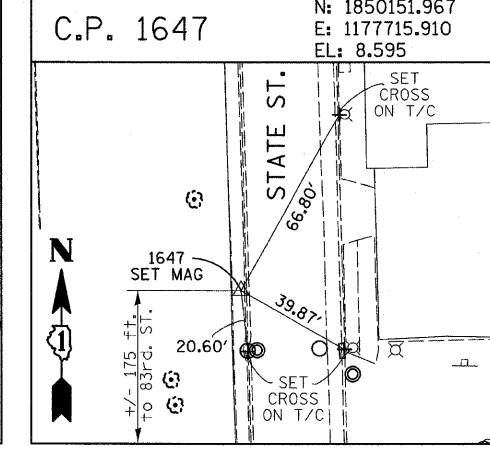
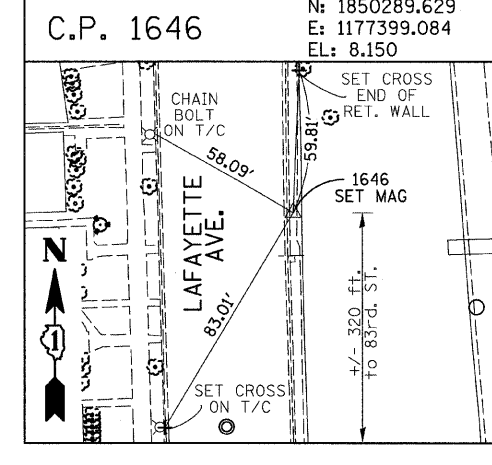
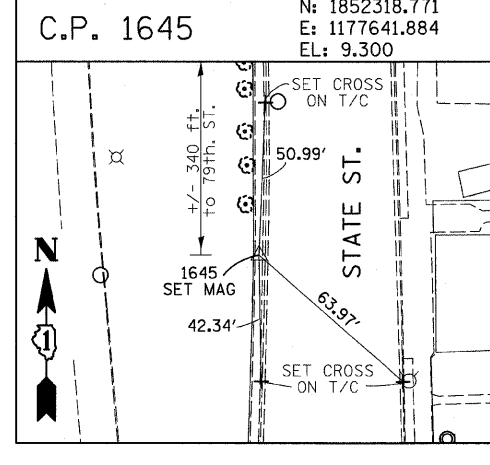
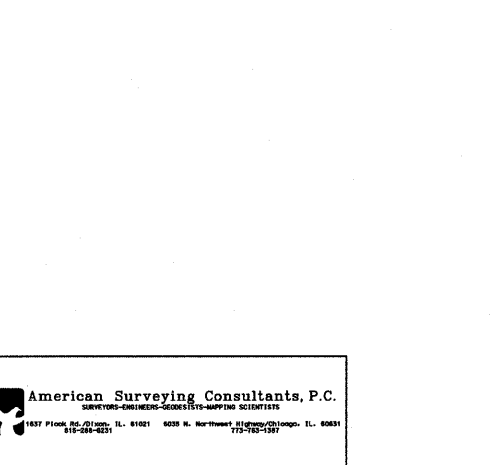
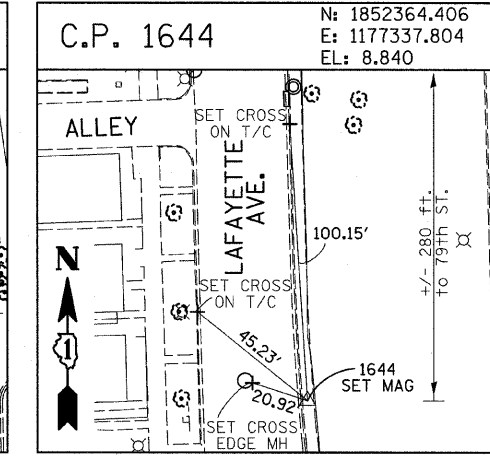
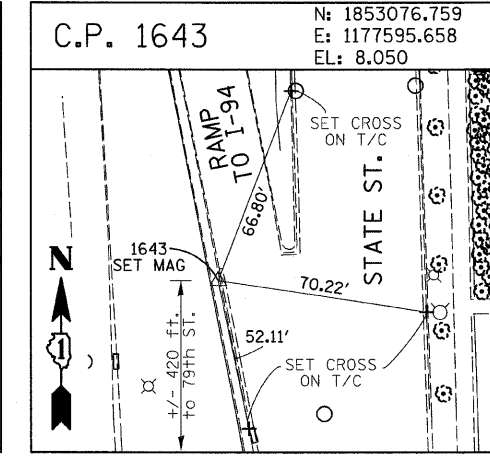
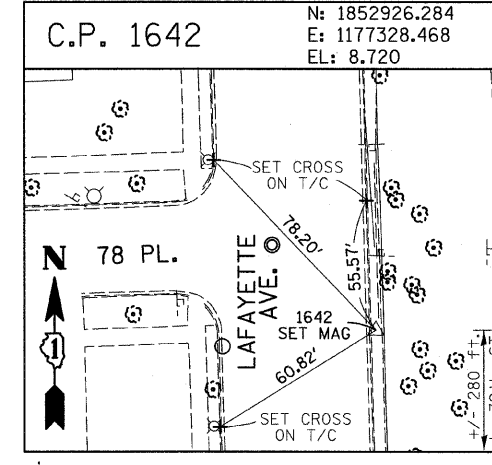
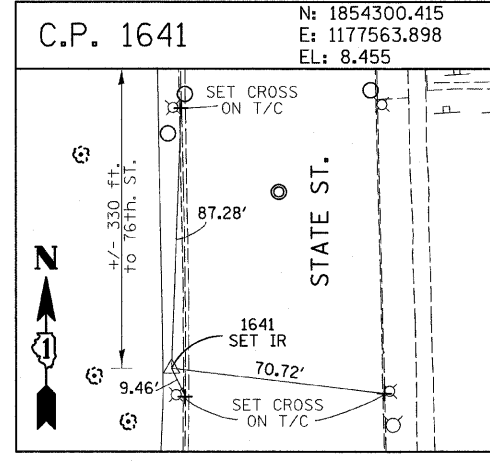
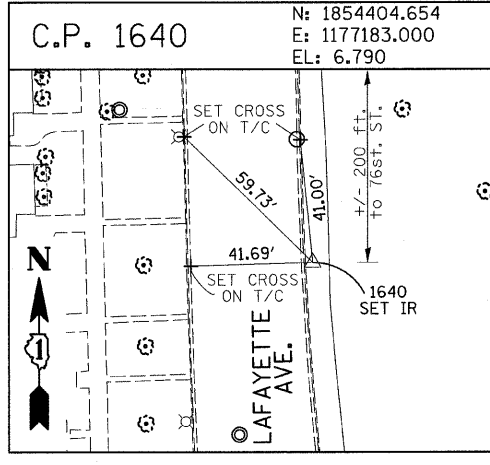
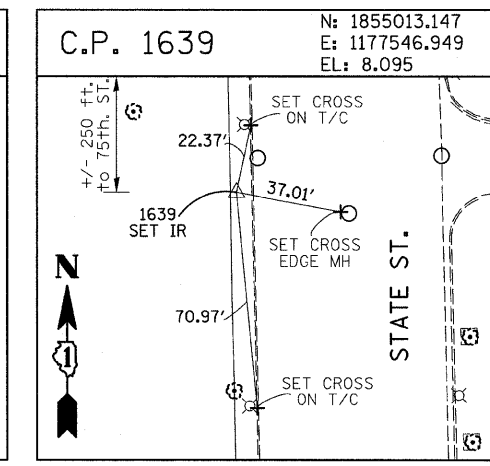
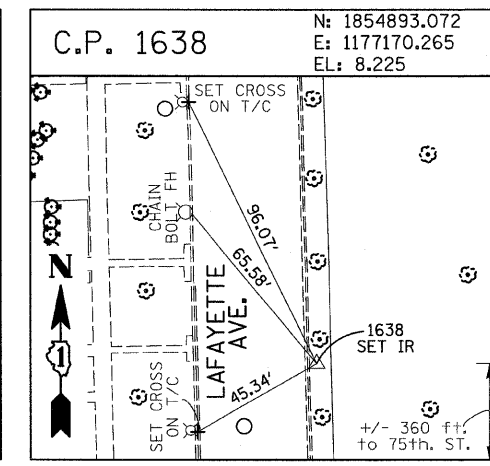
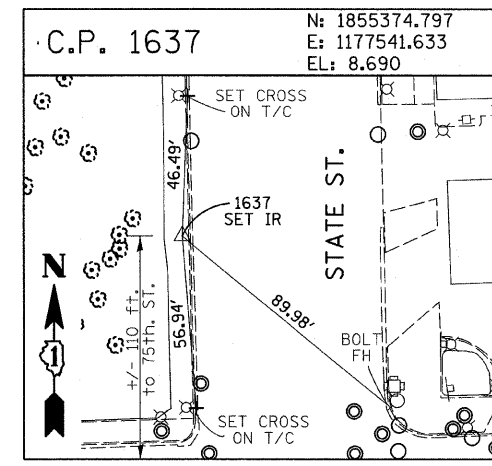
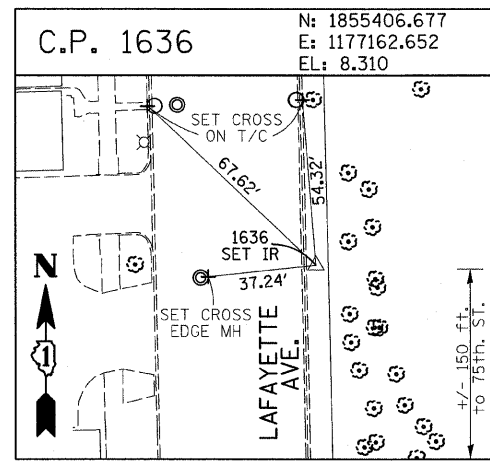
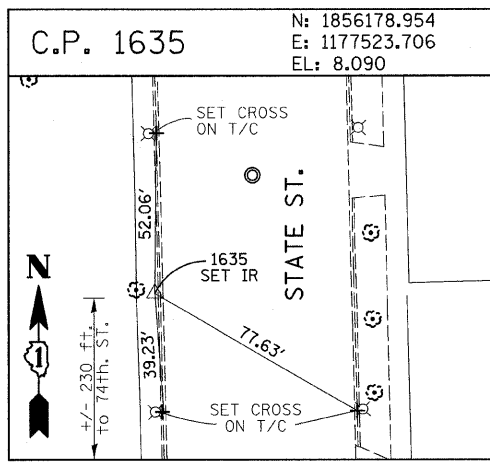
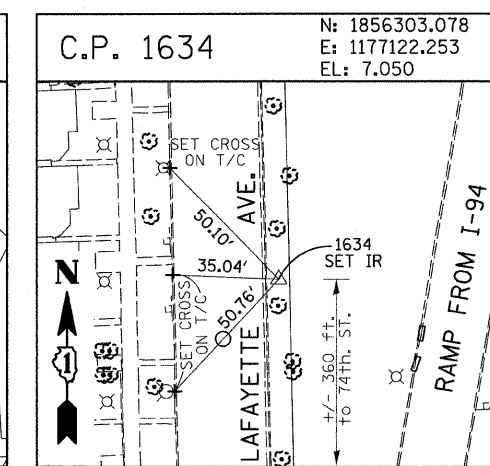
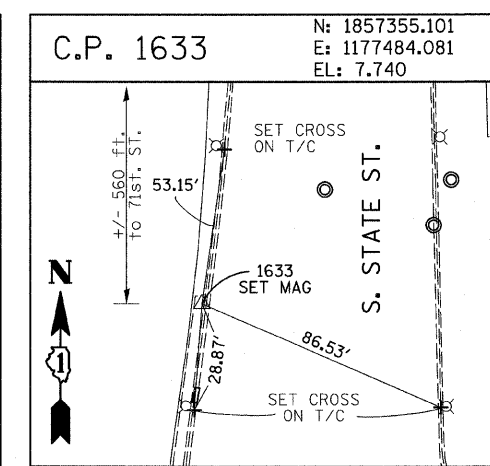
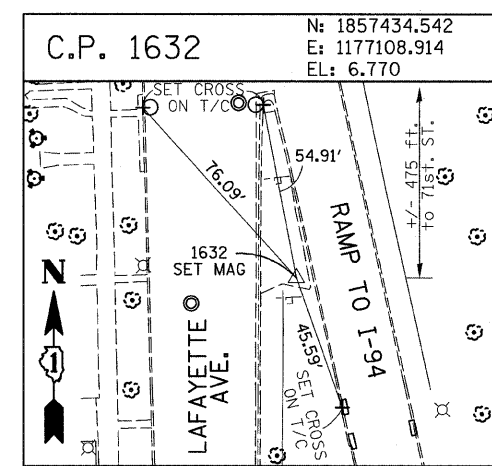
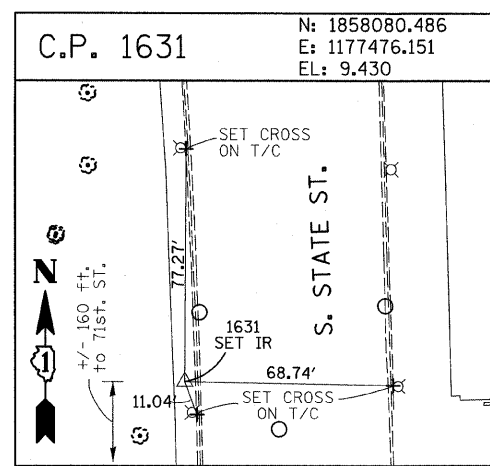
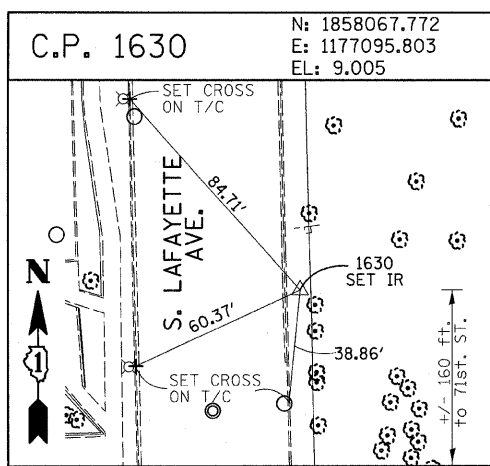


F.A.I. RTE.	SECTION	COUNTY	TOTAL SHEETS	SHEET NO.
94	1818 I-9	COOK	49	12
STA. 1329+49.25		TO STA. 1347+21.51		
FED. ROAD DIST. NO.		ILLINOIS FED. AID PROJECT		
62981				



American Surveying Consultants, P.C.
1527 Park 55, Skokie, IL 60077
630 N. Northwest Highway, Chicago, IL 60664
773-762-1397

REVISIONS	
NAME	DATE

ILLINOIS DEPARTMENT OF TRANSPORTATION
F.A.I. 94 (DAN RYAN EXPRESSWAY)
SURVEY TIES FOR CONTROL POINTS
SHEET 3 OF 7
SCALE: 1"=30'
DATE: OCTOBER 17, 2008
DRAWN BY: GSP
CHECKED BY: MMW

10/16/2008 4:53:25 PM P:\0237\3\road\c26\vi26es073.dwg