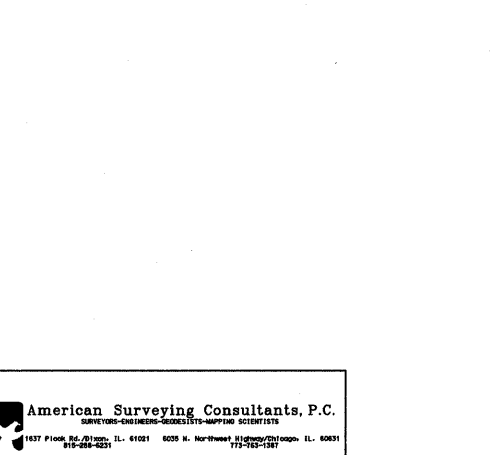
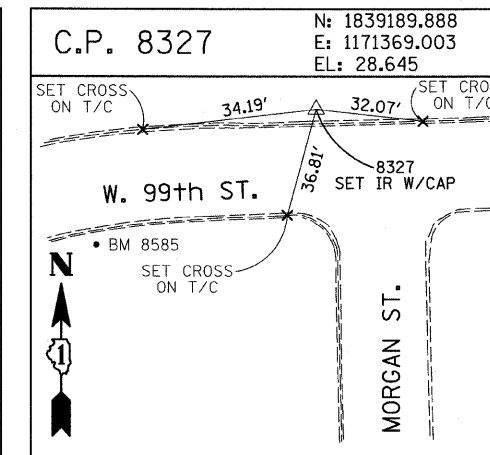
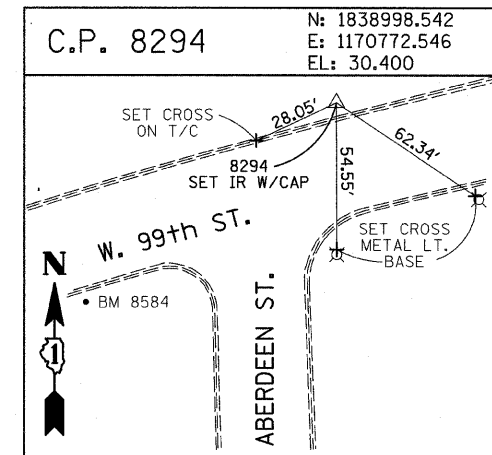
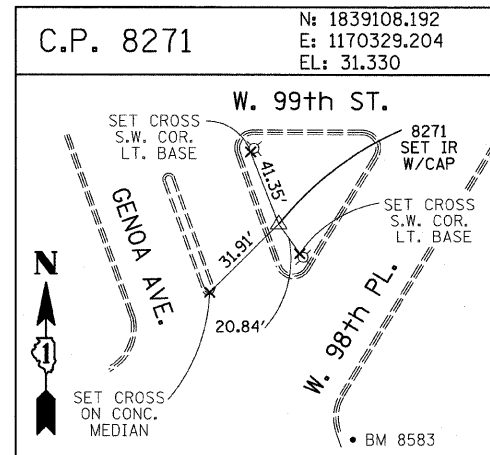
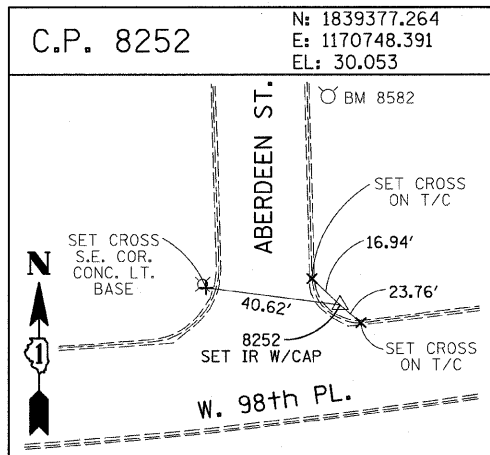
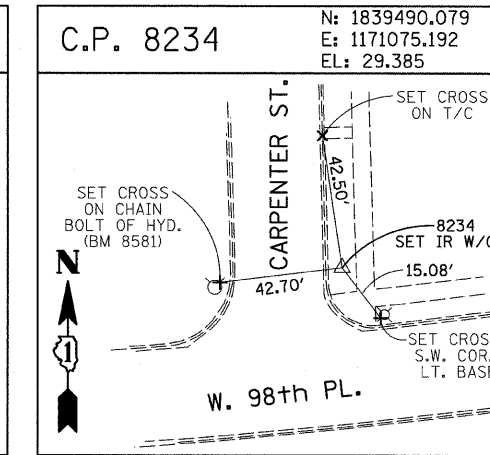
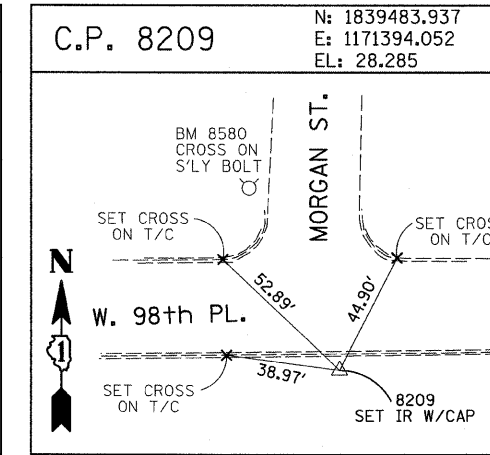
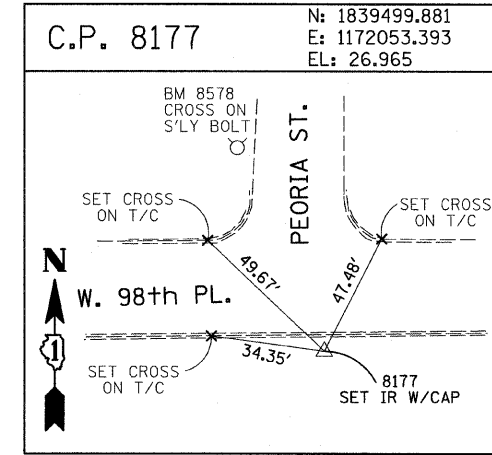
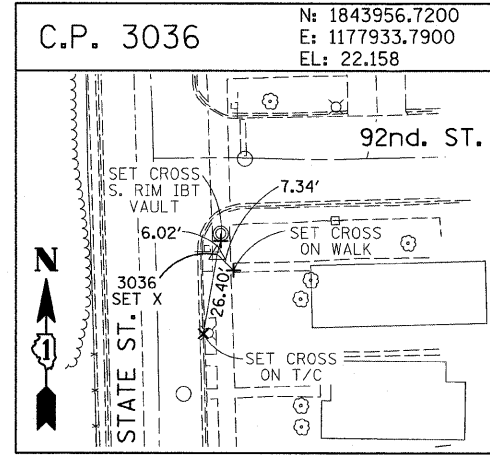
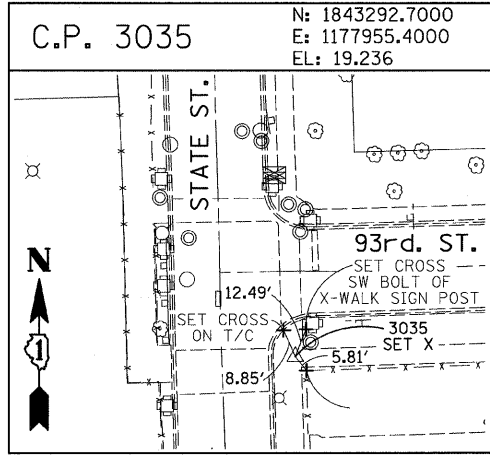
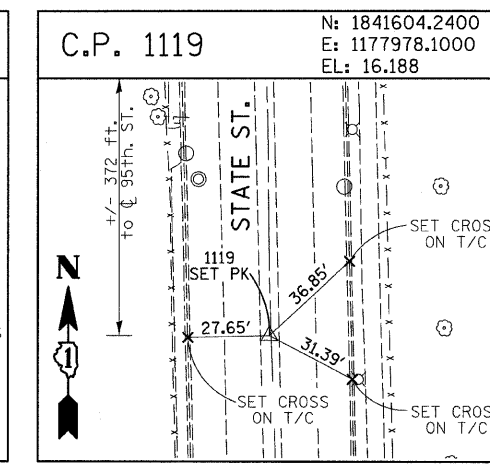
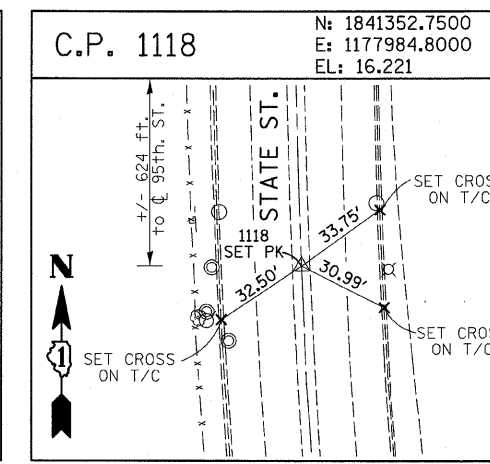
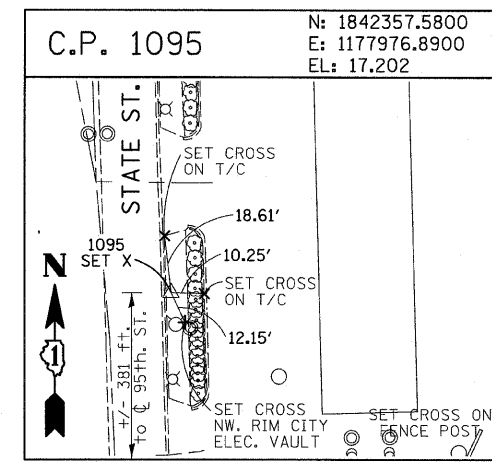
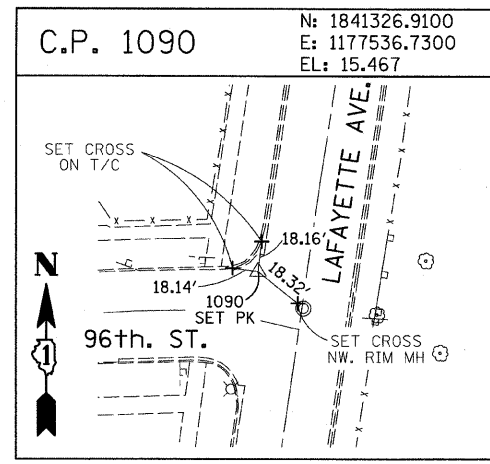
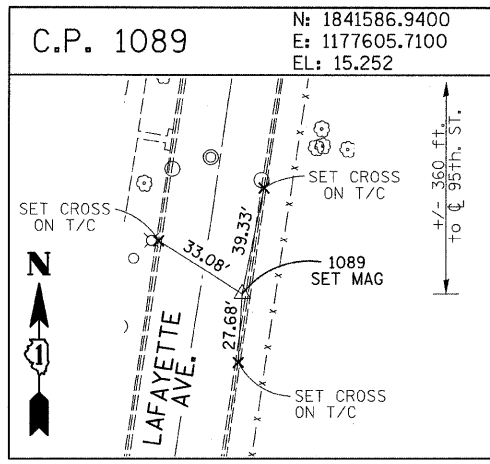


F.A.I. RTE.	SECTION	COUNTY	TOTAL SHEETS	SHEET NO.
94	1818 1-9	COOK	49	15
STA. 1329+49.25		TO STA. 1347+21.51		
FED. ROAD DIST. NO.		ILLINOIS FED. AID PROJECT		
62981				



American Surveying Consultants, P.C.
 1877 Piquette Ave., Suite 100, Chicago, IL 60641
 312-467-2221

REVISIONS	
NAME	DATE

ILLINOIS DEPARTMENT OF TRANSPORTATION
 F.A.I. 94 (DAN RYAN EXPRESSWAY)
 SURVEY TIES FOR CONTROL POINTS
 SHEET 6 OF 7
 SCALE: 1"=30'
 DATE: OCTOBER 17, 2008
 DRAWN BY: GSP
 CHECKED BY: MMW

10/16/2008 4:53:30 PM