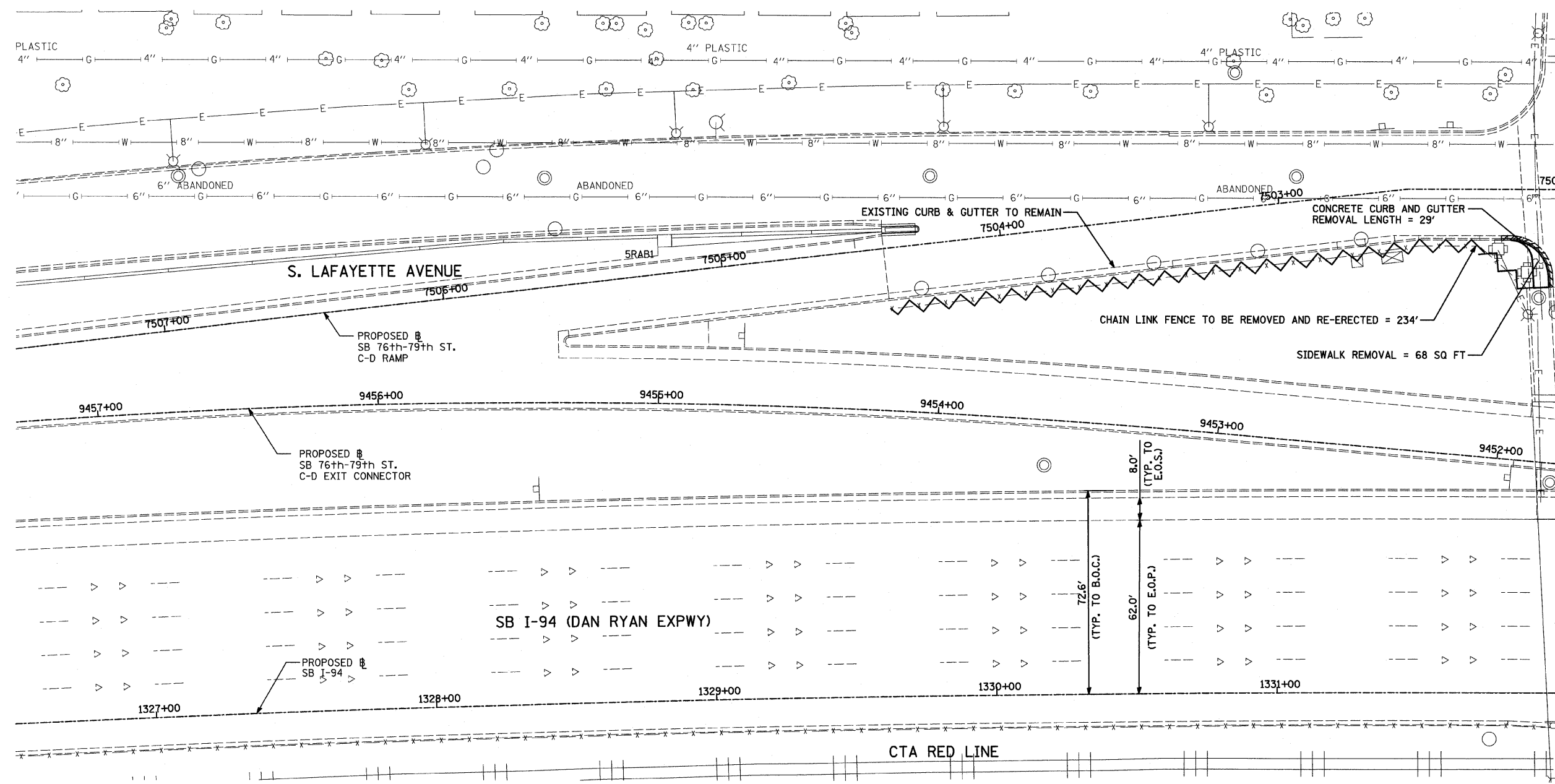
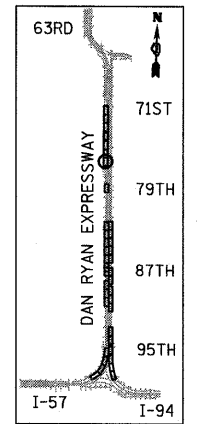


F.A.I. RTE.	SECTION	COUNTY	TOTAL SHEETS	SHEET NO.
94	1818 I-9	COOK	49	17
STA. 1329+49.25		TO STA. 1347+21.51		
FED. ROAD DIST. NO.	ILLINOIS	FED. AID PROJECT		

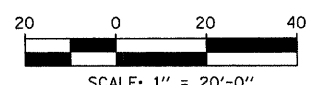
62981



MATCHLINE STA. 1332+00.00



LOCATION MAP



LEGEND:

	CHAIN LINK FENCE REMOVAL/RELOCATE
	CONCRETE BARRIER/GUARDRAIL REMOVAL
	COMB CONC CURB & GUTTER REMOVAL
	TREE REMOVAL (UNITS) (NO UNIT SHOWN = 6)
	PAVED SHOULDER REMOVAL

NOTE:
SIGNS SHALL BE RELOCATED AT A MINIMUM OF 3 FEET FROM THE FRONT FACE OF THE PROPOSED KNEE WALL. EXACT PLACEMENT SHALL BE DETERMINED BY THE ENGINEER. PAID FOR AS "RELOCATE EXISTING SIGN PANEL, SPECIAL".

REVISIONS	
NAME	DATE

ILLINOIS DEPARTMENT OF TRANSPORTATION
F.A.I. 94 (DAN RYAN EXPRESSWAY)
REMOVAL PLAN
SB I-94 (DAN RYAN EXPRESSWAY)
STA. 1327+00.00 TO STA. 1332+00.00
SCALE: 1"=20'
DATE: OCTOBER 17, 2008
DRAWN BY: AMB, MAF
CHECKED BY: TGB, MI

TYLININTERNATIONAL

PA:02373\ROAD\94\26E\PP26E\$1033.dgn B-48635 AM 10/17/2008