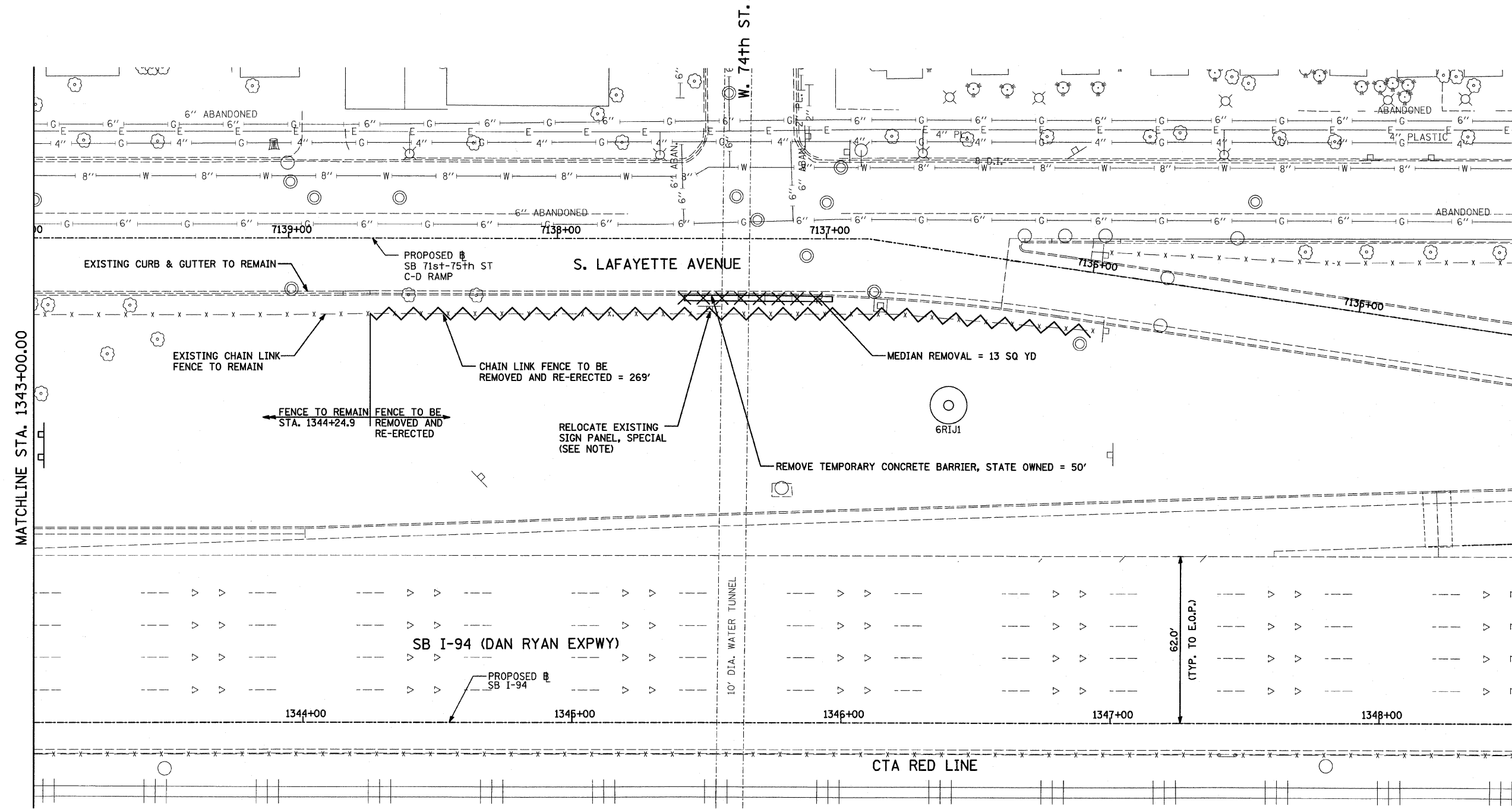
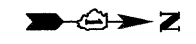
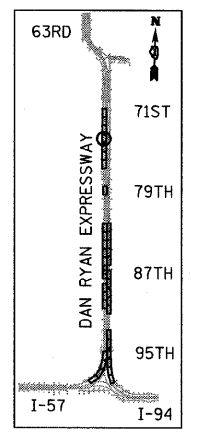


F.A.I. RTE.	SECTION	COUNTY	TOTAL SHEETS	SHEET NO.
94	1818 I-9	COOK	49	23
STA. 1329+49.25		TO STA. 1347+21.51		
FED. ROAD DIST. NO.		ILLINOIS FED. AID PROJECT		

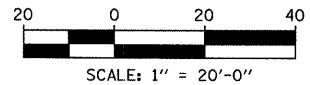
62981



MATCHLINE STA. 1343+00.00



LOCATION MAP



LEGEND:

- CHAIN LINK FENCE REMOVAL/RELOCATE
- CONCRETE BARRIER/GUARDRAIL REMOVAL
- COMB CONC CURB & GUTTER REMOVAL
- TREE REMOVAL (UNITS) (NO UNIT SHOWN = <6)
- PAVED SHOULDER REMOVAL

NOTE:

SIGNS SHALL BE RELOCATED AT A MINIMUM OF 3 FEET FROM THE FRONT FACE OF THE PROPOSED KNEE WALL. EXACT PLACEMENT SHALL BE DETERMINED BY THE ENGINEER. PAID FOR AS "RELOCATE EXISTING SIGN PANEL, SPECIAL".

TYLIN INTERNATIONAL

REVISIONS	
NAME	DATE

ILLINOIS DEPARTMENT OF TRANSPORTATION
F.A.I. 94 (DAN RYAN EXPRESSWAY)
REMOVAL PLAN
SB I-94 (DAN RYAN EXPRESSWAY)
STA. 1343+00.00 TO STA. 1348+50.00
 SCALE: 1"=20' DRAWN BY: AMB, MAF
 DATE: OCTOBER 17, 2008 CHECKED BY: TGB, MI

P:\02373\Road\266\VP\266E\62981.dgn 10/17/2008 8:55:17 AM