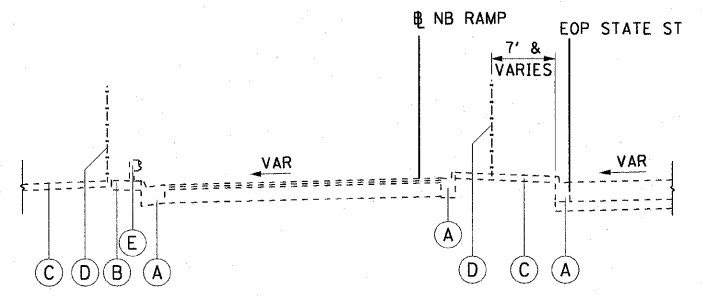
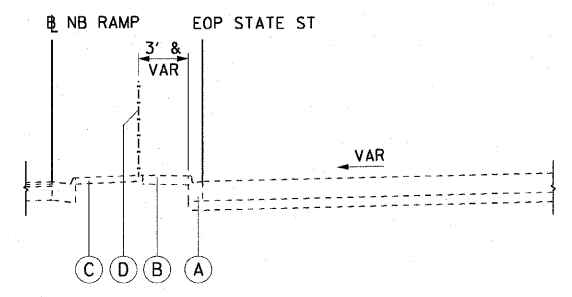


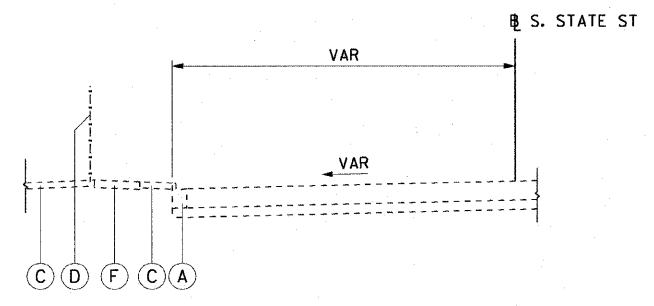
1 EX TYPICAL SECTION NB RAMP
STA 8198+56.30 TO STA 8202+59.24



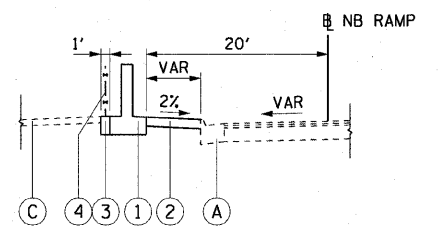
2 EX TYPICAL SECTION S. STATE STREET
STA 8202+59.24 TO STA 8203+07.49



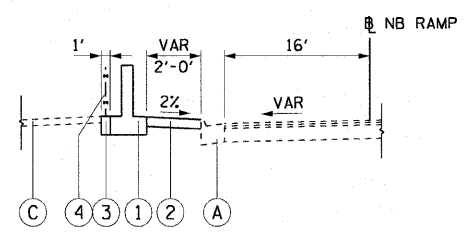
3 EX TYPICAL SECTION S. STATE STREET
STA 8203+07.49 TO STA 8209+47.72
STA 8220+23.69 TO STA 8223+36.23



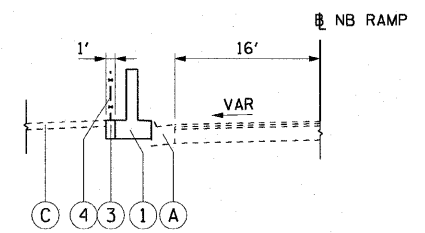
4 EX TYPICAL SECTION S. STATE STREET
STA 8002+62.14 TO STA 8008+16.45



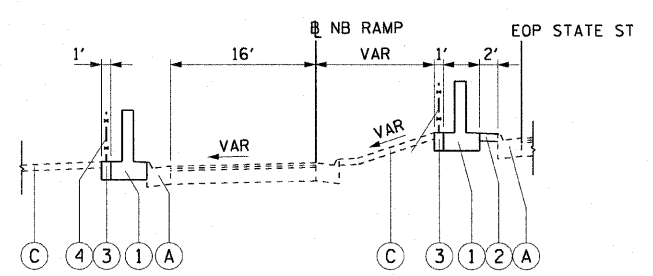
1 PR TYPICAL SECTION NB RAMP
STA 8198+56.30 TO STA 8199+91.75



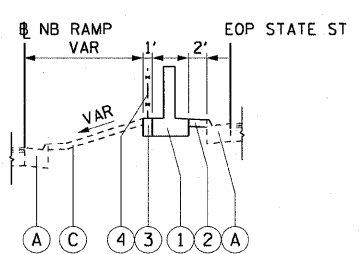
2 PR TYPICAL SECTION NB RAMP
STA 8199+91.75 TO STA 8200+17.93



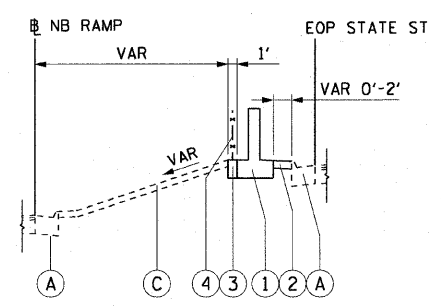
3 PR TYPICAL SECTION NB RAMP
STA 8200+17.93 TO STA 8202+63.82



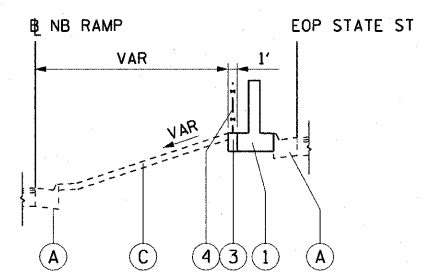
4 PR TYPICAL SECTION NB RAMP
STA 8202+63.82 TO STA 8202+94.24



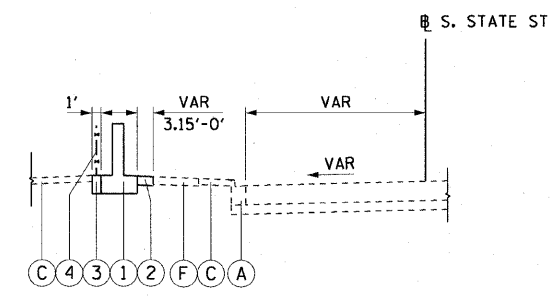
5 PR TYPICAL SECTION NB RAMP
STA 8202+94.24 TO STA 8208+36.00



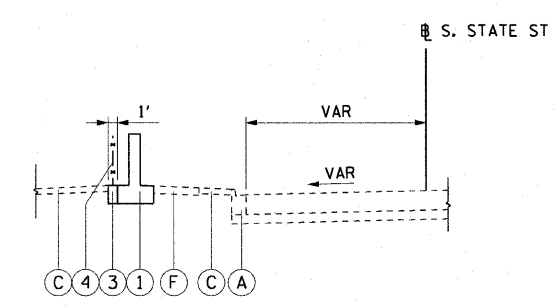
6 PR TYPICAL SECTION NB RAMP
STA 8208+36.00 TO STA 8208+67.09



7 PR TYPICAL SECTION NB RAMP
STA 8208+67.09 TO STA 8209+47.72
STA 8220+23.69 TO STA 8223+23.48



8 PR TYPICAL SECTION S. STATE STREET
STA 8002+62.14 TO STA 8002+98.56



9 PR TYPICAL SECTION S. STATE STREET
STA 8002+98.56 TO STA 8005+74.84
STA 8005+98.84 TO STA 8008+16.45

EXISTING LEGEND:

- (A) COMBINATION CONCRETE CURB AND GUTTER
- (B) PAVED SHOULDER
- (C) GRASS AREA
- (D) CHAIN LINK FENCE
- (E) GUARDRAIL
- (F) PCC SIDEWALK, 5"

PROPOSED LEGEND:

- 1 FLUTED KNEE WALL
- 2 CONCRETE MEDIAN SURFACE, 5" (MODIFIED)
- 3 SEEDING CLASS 2A / TOPSOIL FURNISH AND PLACE, 12" / EROSION CONTROL BLANKET
- 4 CHAIN LINK FENCE, 4' (SPECIAL)

NOTE:

- 1. EXISTING PAVEMENT INFORMATION TAKEN FROM DAN RYAN DESIGN PLANS OR RECORD DRAWINGS.

| REVISIONS | |
|-----------|------|
| NAME | DATE |
| | |
| | |
| | |
| | |
| | |
| | |
| | |

ILLINOIS DEPARTMENT OF TRANSPORTATION
F.A.I. 90/94 (DAN RYAN EXPRESSWAY)
71ST ST TO 63RD ST (NORTHBOUND KNEE WALLS)
EXISTING AND PROPOSED TYPICAL SECTIONS

SCALE: H:1"=10', V:1"=5'
DATE: JANUARY 14, 2009

DRAWN BY: NJH
CHECKED BY: RMG

U:\sc7\p207\p40468\p40468\civil\28-knee-wall\Ferice\SP\contract\270327\002\02.dwg 1/13/2009 11:59:39 AM