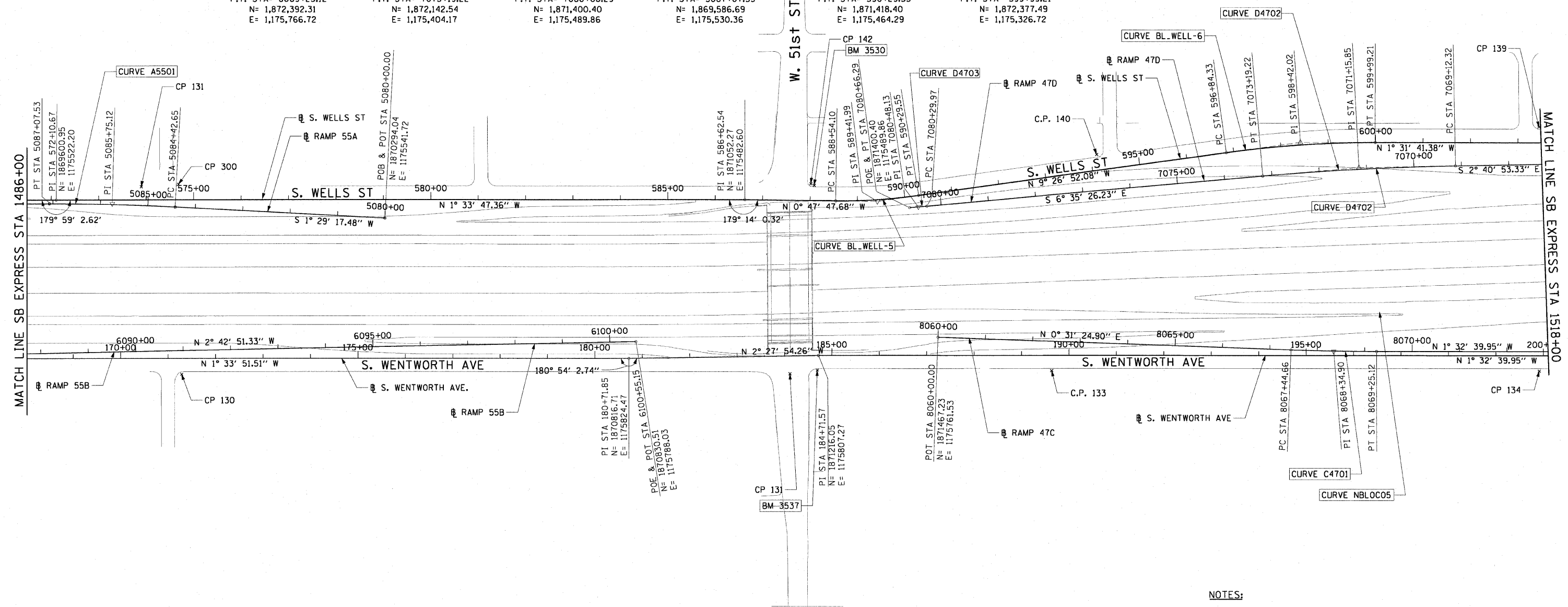


F.A.I. RTE. 90/94	SECTION •	COUNTY COOK	TOTAL SHEETS 45	SHEET NO. 10
STA. TO STA.		FED. AID PROJECT •(1818, 1919, 1919.15) I-11		
				62983



<b>CURVE C4701</b> P.I. STA= 8068+34.90 N= 1,872,302.10 E= 1,175,769.16 $\Delta$ = 2° 04' 05" D= 1° 08' 45" R= 5000.00' T= 90.24' L= 180.47' E= 0.81' $\theta$ = N/A T.R.= N/A S.E. RUN= N/A P.C. STA= 8067+44.66 N= 1,872,211.86 E= 1,175,768.33 P.T. STA= 8069+25.12 N= 1,872,392.31 E= 1,175,766.72	<b>CURVE D4702</b> P.I. STA= 7071+15.85 N= 1,872,344.72 E= 1,175,380.81 $\Delta$ = 3° 54' 33" D= 0° 57' 38" R= 5964.00' T= 203.53' L= 406.91' E= 3.47' $\theta$ = N/A T.R.= N/A S.E. RUN= N/A P.C. STA= 7069+12.32 N= 1,872,548.03 E= 1,175,371.29 P.T. STA= 7073+19.22 N= 1,872,142.54 E= 1,175,404.17	<b>CURVE D4703</b> P.I. STA= 7080+48.13 N= 1,871,418.45 E= 1,175,487.83 $\Delta$ = 0° 11' 56" D= 0° 32' 51" R= 10464.00' T= 18.16' L= 36.32' E= 0.02' $\theta$ = N/A T.R.= N/A S.E. RUN= N/A P.C. STA= 7080+29.97 N= 1,871,436.49 E= 1,175,485.75 P.T. STA= 7080+66.29 N= 1,871,400.40 E= 1,175,489.86	<b>CURVE A5501</b> P.I. STA= 5085+75.12 N= 1,869,719.11 E= 1,175,526.79 $\Delta$ = 3° 02' 07" D= 1° 08' 45" R= 5000.00' T= 132.48' L= 264.89' E= 1.75' $\theta$ = N/A T.R.= N/A S.E. RUN= N/A P.C. STA= 5084+42.65 N= 1,869,851.55 E= 1,175,530.23 P.T. STA= 5087+07.53 N= 1,869,586.69 E= 1,175,530.36	<b>CURVE BL.WELL-5</b> P.I. STA= 589+41.99 N= 1,871,331.70 E= 1,175,478.71 $\Delta$ = 8° 39' 04" D= 4° 55' 51" R= 1162.00' T= 87.89' L= 175.45' E= 3.32' $\theta$ = N/A T.R.= N/A S.E. RUN= N/A P.C. STA= 588+54.10 N= 1,871,243.82 E= 1,175,479.94 P.T. STA= 590+29.55 N= 1,871,418.40 E= 1,175,464.29	<b>CURVE BL.WELL-6</b> P.I. STA= 598+42.02 N= 1,872,219.86 E= 1,175,330.92 $\Delta$ = 7° 55' 11" D= 2° 30' 55" R= 2278.00' T= 157.69' L= 314.87' E= 5.45' $\theta$ = N/A T.R.= N/A S.E. RUN= N/A P.C. STA= 596+84.33 N= 1,872,064.31 E= 1,175,356.80 P.T. STA= 599+99.21 N= 1,872,377.49 E= 1,175,326.72
--	---	--	---	---	--



- NOTES:**
1. AVERAGE GRID TO GROUND CONVERSION FACTOR = 1.000010988654360
  2. FOR BENCH MARK INFORMATION, SEE SHEET 1 OF ALIGNMENT PLAN SHEETS.

REVISIONS	
NAME	DATE

ILLINOIS DEPARTMENT OF TRANSPORTATION  
 F.A.I. 90/94 (DAN RYAN EXPRESSWAY)  
 71ST ST TO 63RD ST (NORTHBOUND KNEE WALLS)

**ALIGNMENT PLAN**

SCALE: 1"=100'  
 DATE: JANUARY 14, 2009

DRAWN BY: NJH  
 CHECKED BY: RMG

**AECOM**

\\sctgip207\p207\40468\40468\civil\28-knee-wall\Fence\ST\contract 27\9\12\2009\20090203.dwg 1/13/2009 11:59:31 AM