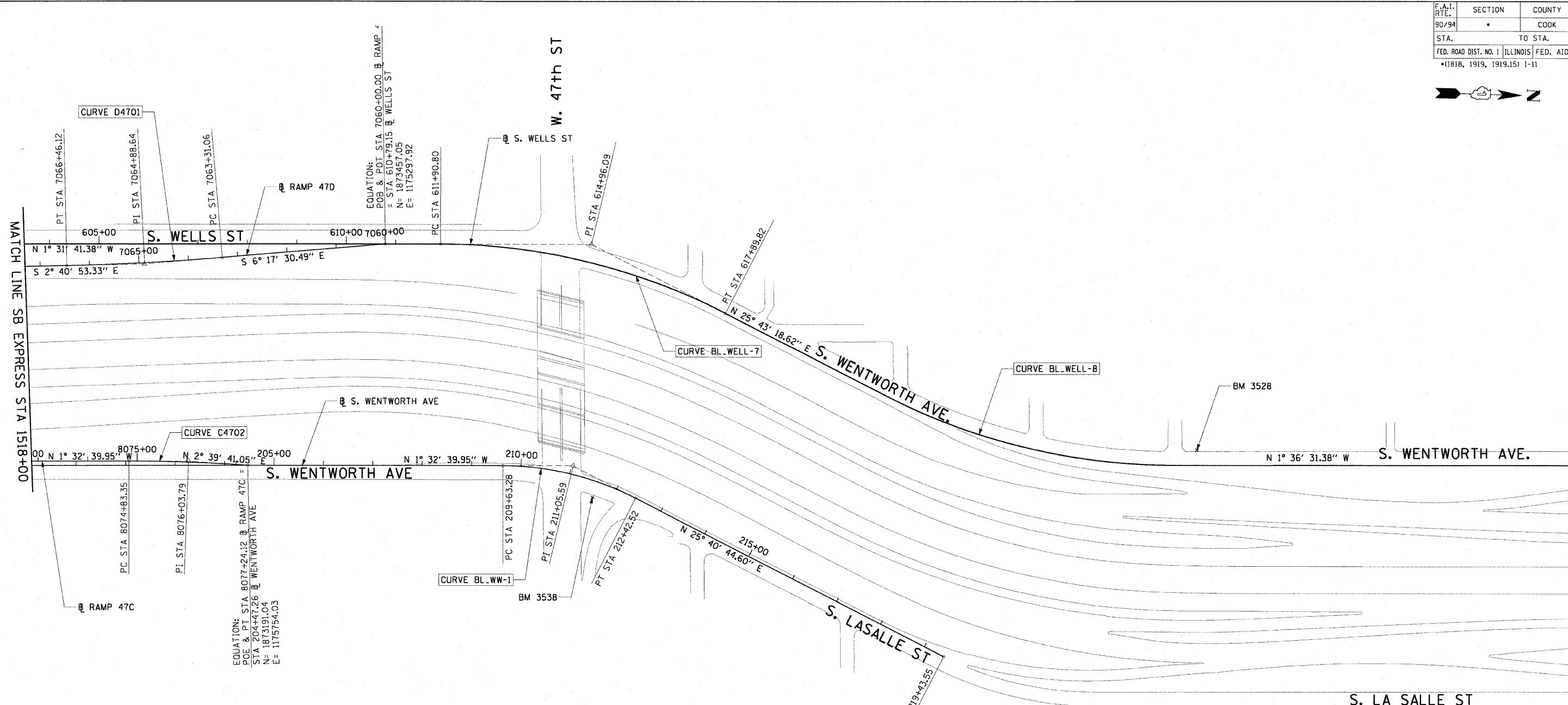


F.A.I. RTE. 90/94	SECTION	COUNTY COOK	TOTAL SHEETS 45	SHEET NO. 11
STA.		TO STA.		
FED. ROAD DIST. NO. 1		ILLINOIS		FED. AID PROJECT
*(1818, 1919, 1919.15)		I-11		62983



CURVE D4701
 P.I. STA= 7064+88.64
 N= 1,872,971.35
 E= 1,175,351.47
 Δ = 3° 36' 37"
 D= 1° 08' 45"
 R= 5000.00'
 T= 157.58'
 L= 315.06'
 E= 2.48'
 e= N/A
 T.R.= N/A
 S.E. RUN= N/A
 P.C. STA= 7063+31.06
 N= 1,873,127.98
 E= 1,175,334.20
 P.T. STA= 7066+46.12
 N= 1,872,813.94
 E= 1,175,358.84

CURVE C4702
 P.I. STA= 8076+03.79
 N= 1,873,070.73
 E= 1,175,748.43
 Δ = 4° 12' 21"
 D= 1° 44' 49"
 R= 3280.00'
 T= 120.44'
 L= 240.77'
 E= 2.21'
 e= N/A
 T.R.= N/A
 S.E. RUN= N/A
 P.C. STA= 8074+83.35
 N= 1,872,950.33
 E= 1,175,751.68
 P.T. STA= 8077+24.12
 N= 1,873,191.04
 E= 1,175,754.03

CURVE BL_WELL-8
 P.I. STA= 624+60.62
 N= 1,874,753.20
 E= 1,175,710.42
 Δ = 27° 19' 50"
 D= 4° 27' 01"
 R= 1287.50'
 T= 313.03'
 L= 614.15'
 E= 37.51'
 e= N/A
 T.R.= N/A
 S.E. RUN= N/A
 P.C. STA= 621+47.59
 N= 1,874,471.18
 E= 1,175,574.56
 P.T. STA= 627+61.73
 N= 1,875,066.11
 E= 1,175,701.63

CURVE BL_WELL-7
 P.I. STA= 614+96.09
 N= 1,873,873.84
 E= 1,175,286.80
 Δ = 27° 15' 00"
 D= 4° 32' 57"
 R= 1259.50'
 T= 305.29'
 L= 599.02'
 E= 36.47'
 e= N/A
 T.R.= N/A
 S.E. RUN= N/A
 P.C. STA= 611+90.80
 N= 1,873,568.66
 E= 1,175,294.94
 P.T. STA= 617+89.82
 N= 1,874,148.87
 E= 1,175,419.29

CURVE BL_WW-1
 P.I. STA= 211+05.59
 N= 1,873,849.12
 E= 1,175,736.28
 Δ = 27° 13' 25"
 D= 9° 44' 58"
 R= 587.69'
 T= 142.30'
 L= 279.23'
 E= 16.98'
 e= N/A
 T.R.= N/A
 S.E. RUN= N/A
 P.C. STA= 209+63.28
 N= 1,873,706.87
 E= 1,175,740.12
 P.T. STA= 212+42.52
 N= 1,873,977.37
 E= 1,175,797.95

NOTES:

1. AVERAGE GRID TO GROUND CONVERSION FACTOR = 1.000010988654360
2. FOR BENCH MARK INFORMATION, SEE SHEET 1 OF ALIGNMENT PLAN SHEETS.

REVISIONS	
NAME	DATE

ILLINOIS DEPARTMENT OF TRANSPORTATION
 F.A.I. 90/94 (DAN RYAN EXPRESSWAY)
 71ST ST TO 63RD ST (NORTHBOUND KNEE WALLS)

ALIGNMENT PLAN

SCALE: 1"=100'
 DATE: JANUARY 14, 2009
 DRAWN BY: NJH
 CHECKED BY: RMG