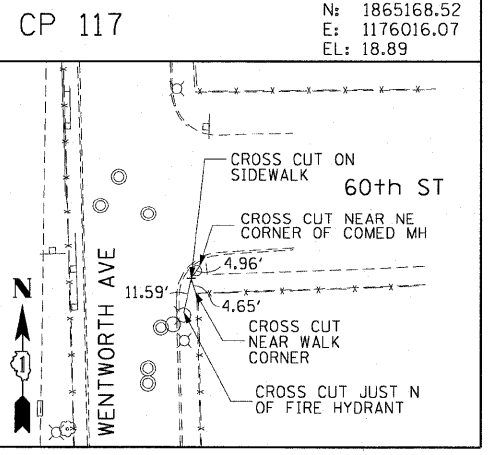
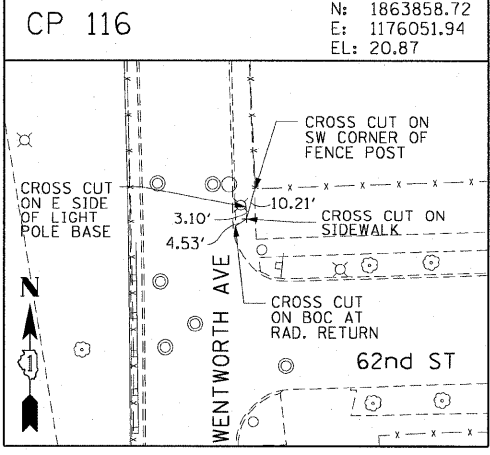
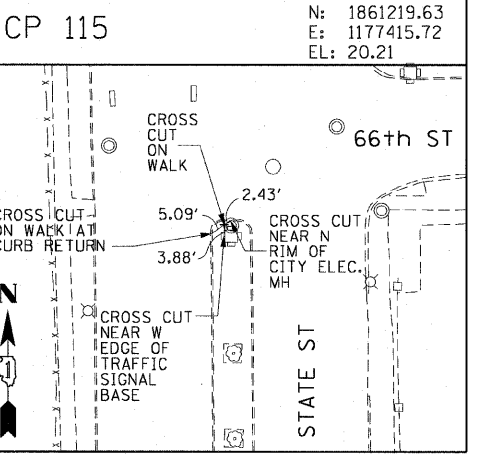
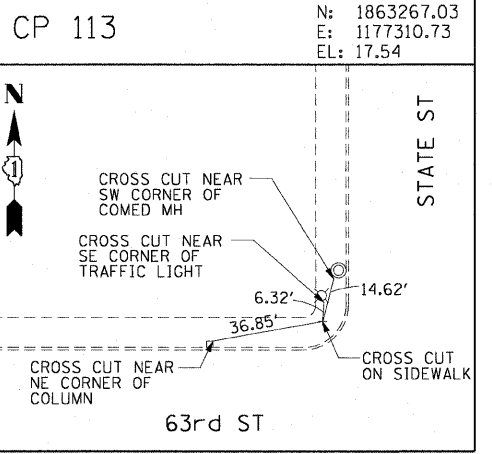
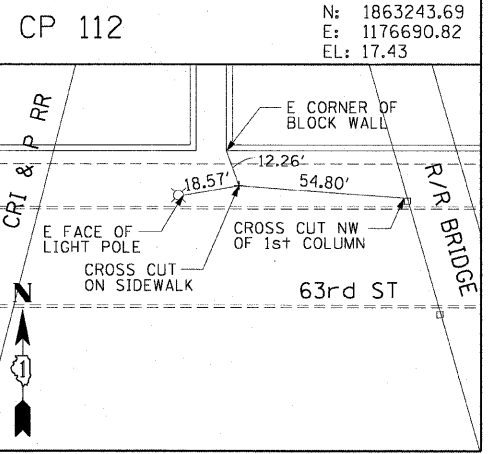
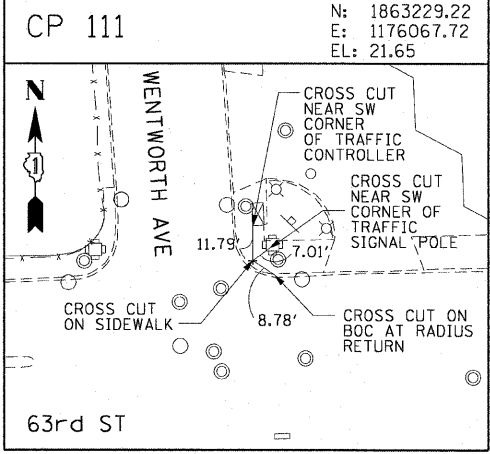
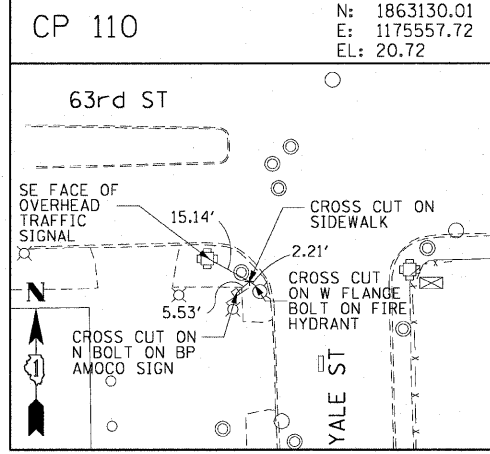
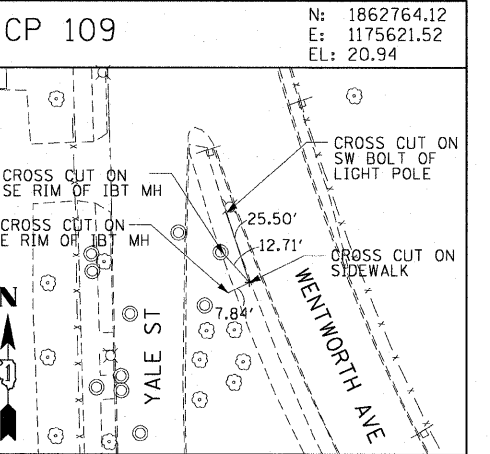
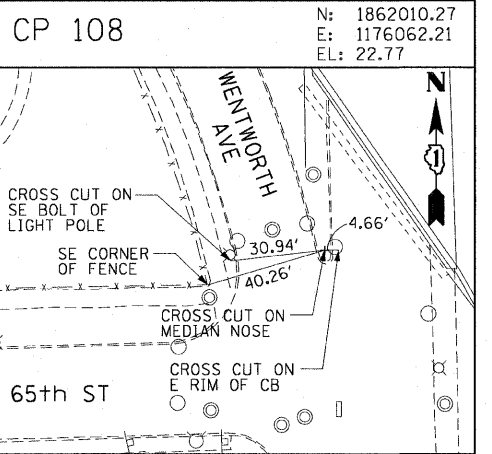
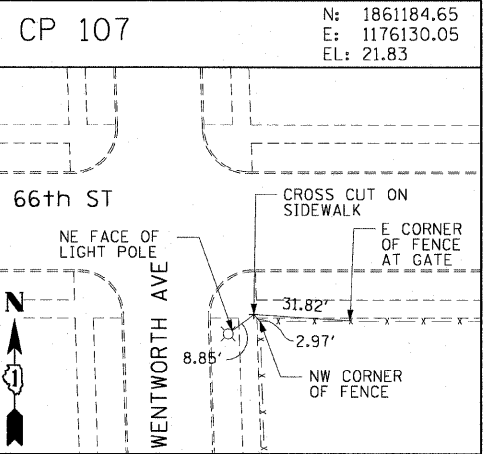
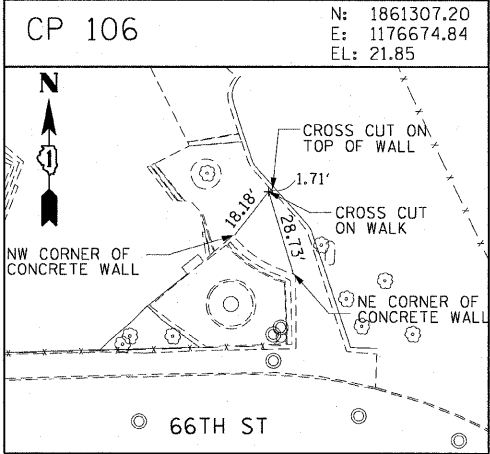
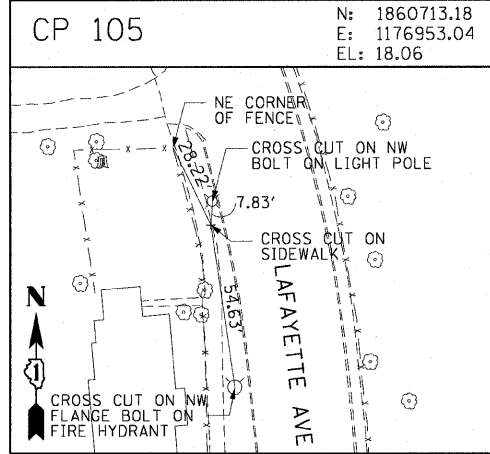
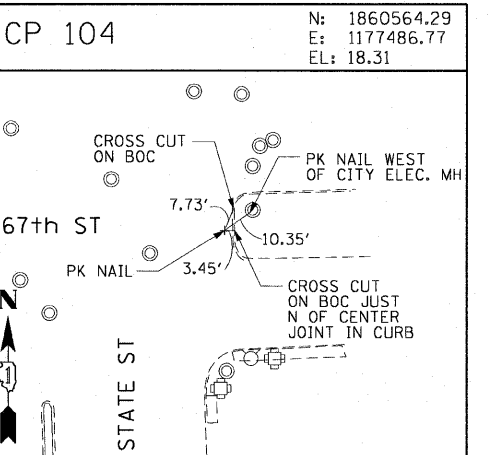
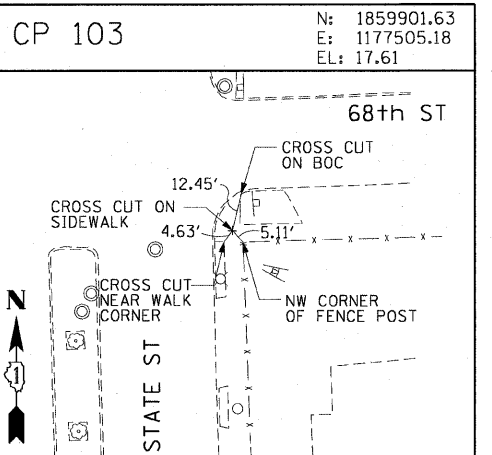
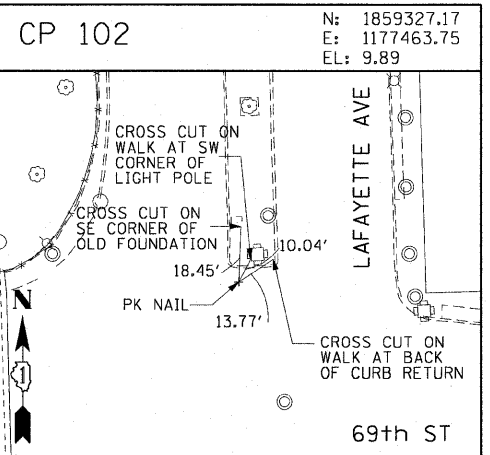
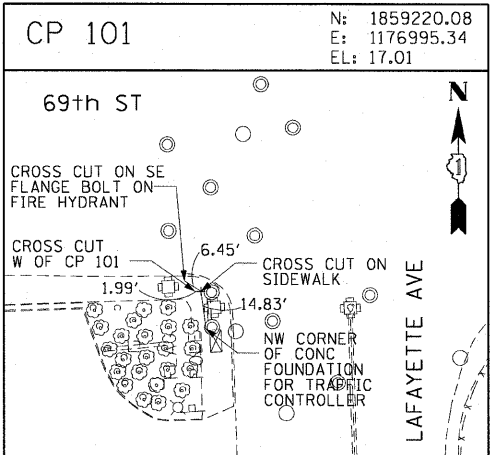
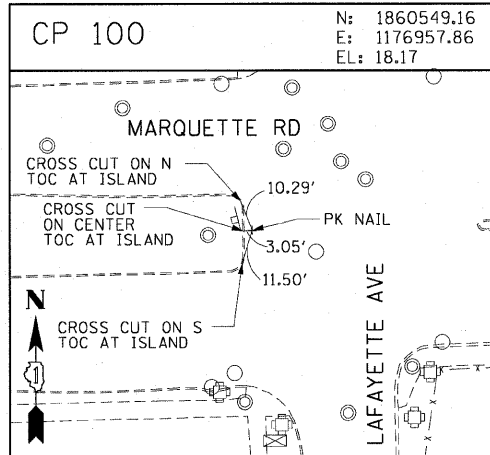


F.A.I. RTE. 90/94	SECTION	COUNTY	TOTAL SHEETS	SHEET NO.
		COOK	45	12
STA.		TO STA.		
FED. ROAD DIST. NO. 1		ILLINOIS	FED. AID PROJECT	
•(1818, 1919, 1919.15)		1-11		62983



AECOM

REVISIONS	
NAME	DATE

ILLINOIS DEPARTMENT OF TRANSPORTATION
F.A.I. 90/94 (DAN RYAN EXPRESSWAY)
71ST ST TO 63RD ST (NORTHBOUND KNEE WALLS)
SURVEY TIES AND CONTROL POINTS
SCALE: 1"=30'
DATE: JANUARY 14, 2009
DRAWN BY: MRK
CHECKED BY: JAL

I:\scg\p1207\1040468\civil\28 knee_wall_fence\contract\276\c12\025.dwg 1/13/2009 11:09:31 AM